









G

B38





GLC

GLC





FMD20B
GETLUS











12AWG 105°C Dry and 90°C Wet 600V Sun

OUT -

- IN +

SolarEdge IndOP

DC Output: 340W/5-60V/15A

DC Input: 8-48V/11A

Open Circuit Voltage: 1V

NA29

SZ4620-020AF862E-83



MADE IN:

The EU

P340-5NM4MRS

Wire 12AWG 105°C

020AF862E-83



Do Not Remove



020AF862E-83



Intertek
4004590



CAUTION

HOT SURFACES-TO REDUCE THE RISK OF BURNS-DO NOT TOUCH.
RISK OF ELECTRIC SHOCK-WHEN THE PHOTOVOLTAIC ARRAY IS EXPOSED TO LIGHT, IT SUPPLIES A DC VOLTAGE TO EQUIPMENT. COVER PV MODULE WITH OPACQUE MATERIAL BEFORE CONNECTING OR DISCONNECTING THIS OPTIMIZER.
IN THE EVENT OF A SHORT CIRCUIT OR OPENING FAULT,ZERO CURRENT IS SOURCED INTO DC ARRAY BY CONVERTER.

E345972 (UL) PV Wire 12AWG 105°C Dry and 90°C Wet 600V Sun

WARNING ELECTRIC SHOCK HAZARD. THE DC CONDUCTORS AND SYSTEM ARE UNGROUNDED AND MAY BE ENERGIZED.

AVERTISSEMENT

RISQUE DE CHOC ELECTRIQUE: QUAND LE CHAMP PHOTOVOLTAIQUE EST EXPOSE A LA LUMIERE, UNE TENSION CC EST FOURNIE A CET EQUIPEMENT.
SURFACES CHAUDES: NE PAS TOUCHER, AFIN DE REDUIRE LES RISQUES DE BRULURES LE COURANT DE RETOUR INJECTE PAR LE CONVERTISSEUR EN CAS DE DEFAILLANCE DANS LE MODULE PV EST TOUJOURS NUL.





128

Urtz

1
Urtz
403-4873



128

Urtz

1
No
Mailbox
855-6871





7 6 5 4 3 2 1
FT & IN
INCHES
25FT
1/8 1/4 3/8 1/2 5/8 3/4 7/8



28
29
30
31
32
33
34
35
36
37
38
39
40









PHOTOVOLTAIC SYSTEM
EQUIPPED WITH
RAPID SHUTDOWN

solar_{edge} HD wave

WARNING
ELECTRICAL SHOCK HAZARD
TERMINALS ON THE LINE AND
LOAD SIDES MAY BE ENERGIZED
IN THE OPEN POSITION

WARNING
ELECTRICAL SHOCK HAZARD
THE DC CONDUCTORS OF THIS
PHOTOVOLTAIC SYSTEM ARE UNGROUNDED
AND MAY BE ENERGIZED

PHOTOVOLTAIC
DC DISCONNECT

solar_{edge}



EATON

WARNING
ELECTRICAL SHOCK HAZARD
TERMINALS ON THE LINE AND
LOAD SIDES MAY BE ENERGIZED
IN THE OPEN POSITION

WARNING
DUAL POWER SUPPLY
SOURCES: UTILITY GRID
AND PV SOLAR
ELECTRIC SYSTEM

MAIN PHOTOVOLTAIC
SYSTEM
AC DISCONNECT

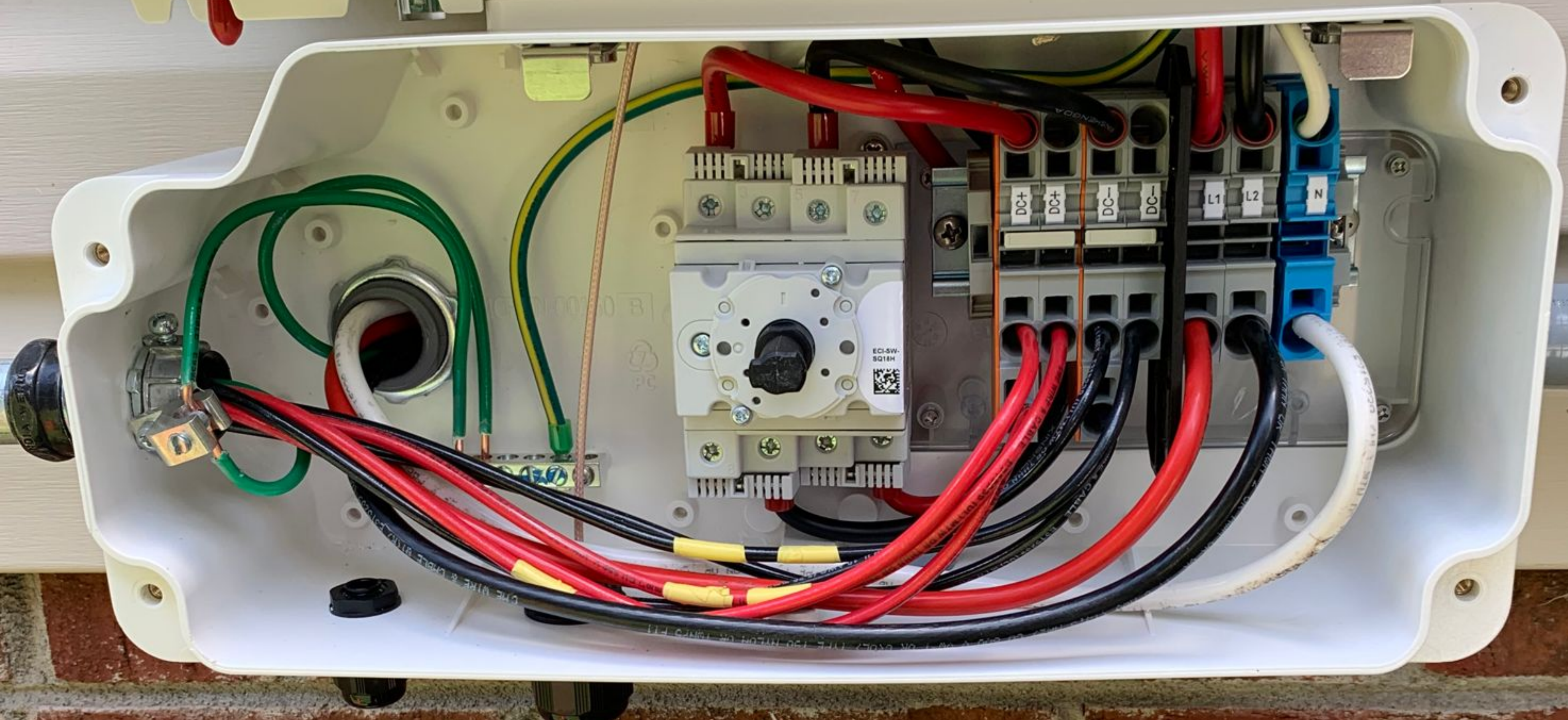
PHOTOVOLTAIC
AC DISCONNECT
RAPID SHUTDOWN SWITCH
FOR SOLAR PV SYSTEM

PHOTOVOLTAIC AC DISCONNECT
MAXIMUM OPERATING CURRENT
60
240



solar**edge**

HD wave



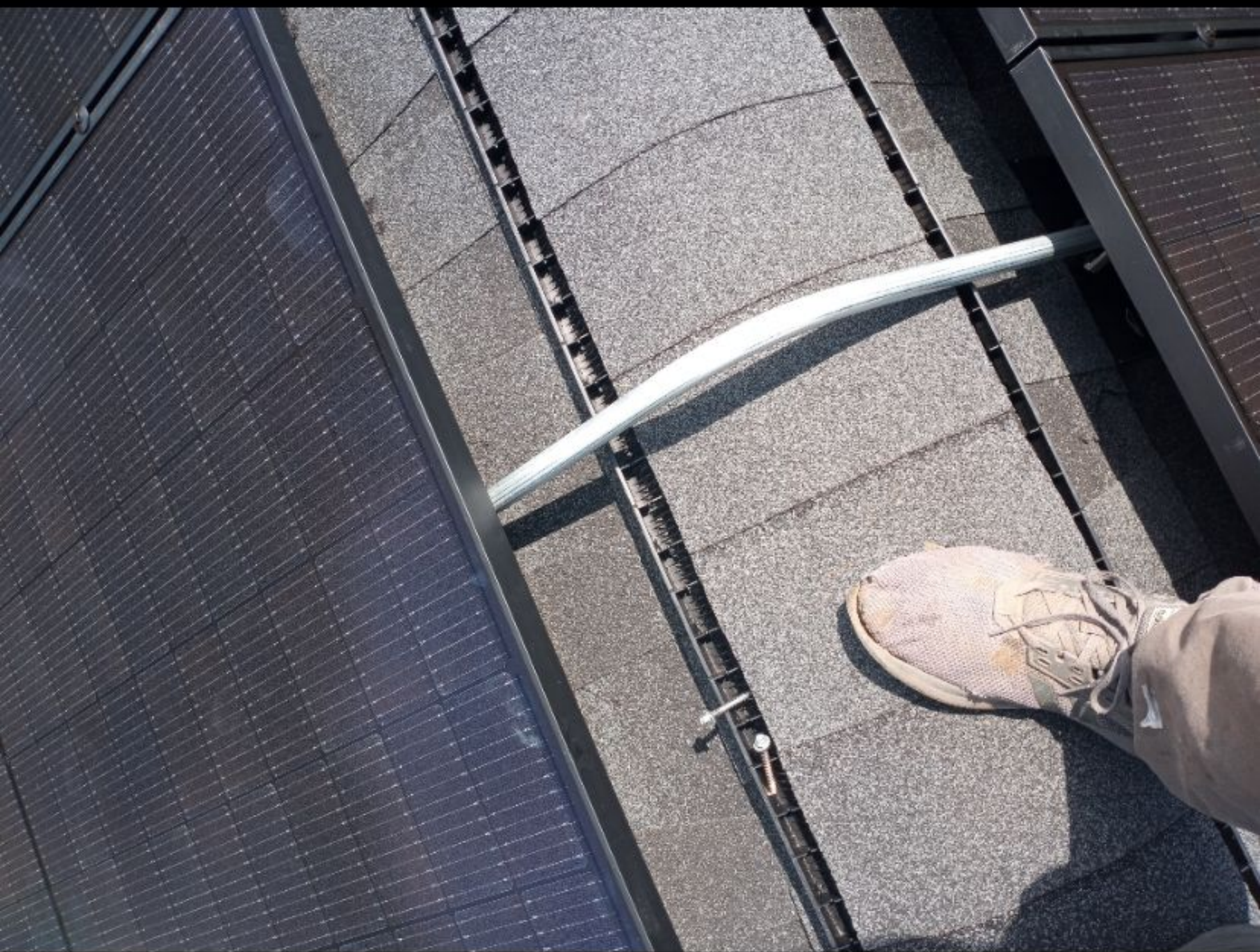




**WARNING PHOTOVOLTAIC
POWER SOURCE**











WARNING PHOTOVOLTAIC
POWER SOURCE









