























Standard Form 616-B (REV. 08-15)

Project Name: 145474004 DR	
Contract No.: 8-8	Sheet No.:
DATE: 11/11/11	
DESIGNER:	CHECKED:
DATE:	DATE:
PROJECT:	PROJECT:
LOCATION:	LOCATION:
CONTRACTOR:	CONTRACTOR:
INSTALLER:	INSTALLER:
DATE:	DATE:
PROJECT NO.:	PROJECT NO.:
DATE:	DATE:
PROJECT NO.:	PROJECT NO.:
DATE:	DATE:

WARNING
 Read Instructions Before Use
 © 2009 SunPower Corporation

⚠ WARNING

DUAL POWER SUPPLY

SOURCES: UTILITY GRID AND PV SOLAR ELECTRIC SYSTEM

⚠ WARNING

ELECTRIC SHOCK HAZARD

TERMINALS ON THE LINE AND LOAD SIDES MAY BE ENERGIZED IN THE OPEN POSITION

⚠ WARNING

WARRANTY INFORMATION: THIS PRODUCT IS A SUNPOWER PRODUCT. IT IS COVERED BY THE SUNPOWER LIMITED WARRANTY. SEE THE WARRANTY INFORMATION FOR FULL DETAILS. CONTACT SUNPOWER AT 1-800-333-3333 FOR MORE INFORMATION.




WARNING
INVERTER OUTPUT CONNECTION
DO NOT RELOCATE
THIS OVERCURRENT
DEVICE

WARNING ADVERTENCIA AVER

This inverter is designed and tested by Square D to perform under specific conditions. Use of other than the Square D components specified in the Square D manual may void the warranty. Do not use the inverter for applications not specified in the Square D manual. Do not use the inverter for applications not specified in the Square D manual. Do not use the inverter for applications not specified in the Square D manual. Do not use the inverter for applications not specified in the Square D manual.

41	39	37	35	33	31	29
-	-	-	-	-	-	-
-	-	-	-	-	-	-

 ENPHASE

 **WARNING**

DUAL POWER SUPPLY

SOURCES: UTILITY GRID AND
PV SOLAR ELECTRIC SYSTEM

 **WARNING**

ELECTRIC SHOCK HAZARD

TERMINALS ON THE LINE AND
LOAD SIDES MAY BE ENERGIZED
IN THE OPEN POSITION

 **WARNING**

THIS EQUIPMENT FED BY MULTIPLE
SOURCES TOTAL RATINGS OF ALL
OVERCURRENT DEVICES, EXCLUDING
MAIN SUPPLY OVERCURRENT
DEVICE, SHALL NOT EXCEED
RATING OF BUSBAR.

**PHOTOVOLTAIC SYSTEM
EQUIPPED WITH
RAPID SHUTDOWN**

WARNING
GRID AND
SYSTEM

WARNING
ELECTRIC SHOCK HAZARD
TERMINALS ON THE LINE AND
LOAD SIDES MAY BE ENERGIZED
IN THE OPEN POSITION

WARNING
ELECTRIC SHOCK HAZARD
TERMINALS ON THE LINE AND
LOAD SIDES MAY BE ENERGIZED
IN THE OPEN POSITION

WARNING
ELECTRIC SHOCK HAZARD
TERMINALS ON THE LINE AND
LOAD SIDES MAY BE ENERGIZED
IN THE OPEN POSITION



⚠ WARNING
DUAL POWER SUPPLY
SOURCES: UTILITY GRID AND
PV SOLAR ELECTRIC SYSTEM

⚠ WARNING
This meter is a Class 2
Low Voltage Transformer
and is not to be used
for any other purpose.

CREMTECH

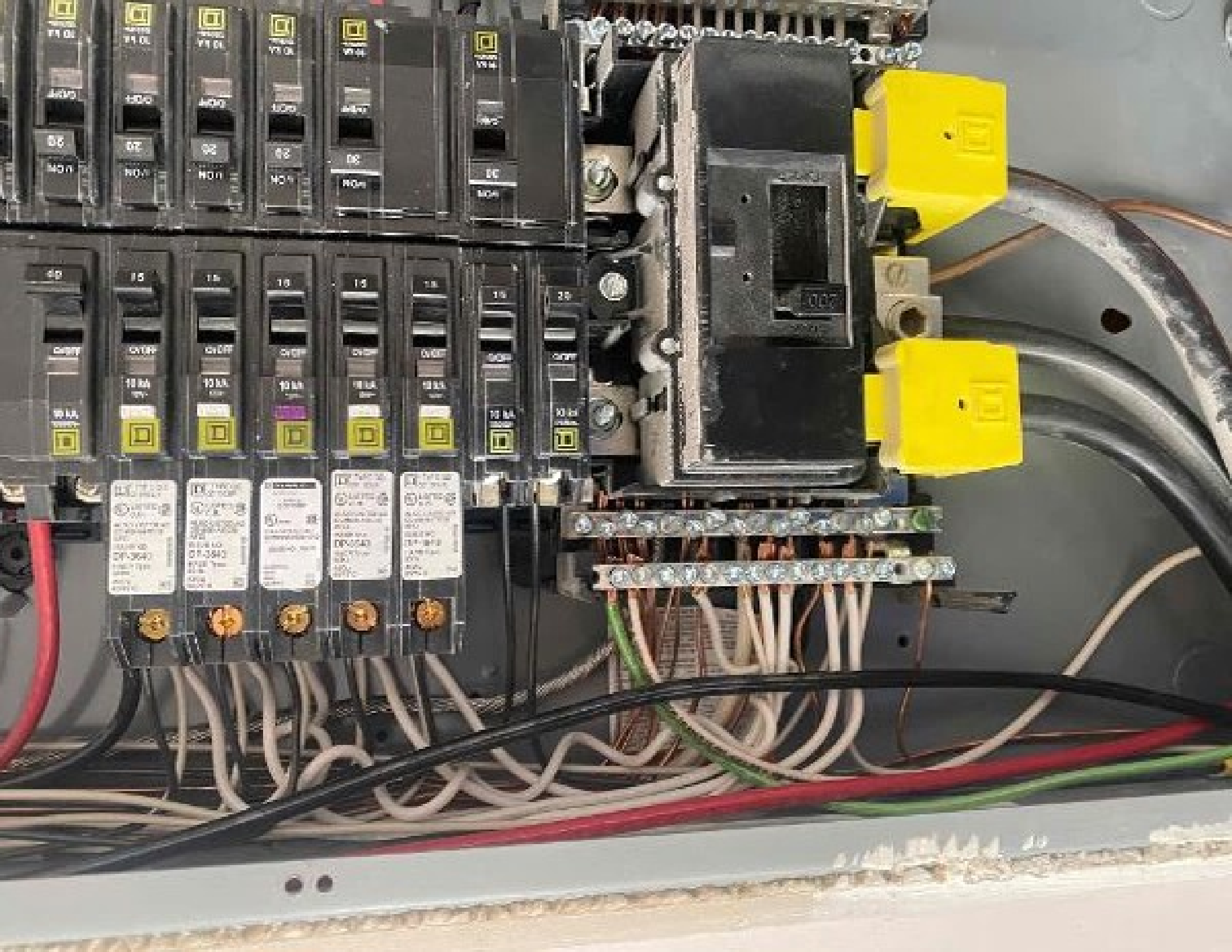




1/ON
35
O/OFF
10 kA
CIRCUIT BREAKER

10 A
1000V
O/OFF
09
1/ON

ATTN: V...

















**PHOTOVOLTAIC SYSTEM
EQUIPPED WITH
RAPID SHUTDOWN**

WARNING
SOURCES: UTILITY GRID AND
PV SOLAR ELECTRIC SYSTEM

GENERAL RISK
SAFETY SWITCH
ELECTRIC SHOCK OR
FIRE HAZARD OR
DEATH

⚡ DANGER / PELIGRO
ELECTRIC SHOCK OR
FIRE HAZARD OR
DEATH

⚡ DANGER / PELIGRO
ELECTRIC SHOCK OR
FIRE HAZARD OR
DEATH

**PHOTOVOLTAIC SYSTEM
AC DISCONNECT**

RATED AC OUTPUT CURRENT

25A
120V

WARNING
ELECTRIC SHOCK HAZARD
TERMINALS ON THE LINE AND
LOAD SIDES MAY BE ENERGIZED
IN THE OPEN POSITION



UNIVERSAL SEM INFINITY RACKING
FOR THE BONDING OF PVC AND EPDM MEMBRANES
© 2014 ALTA



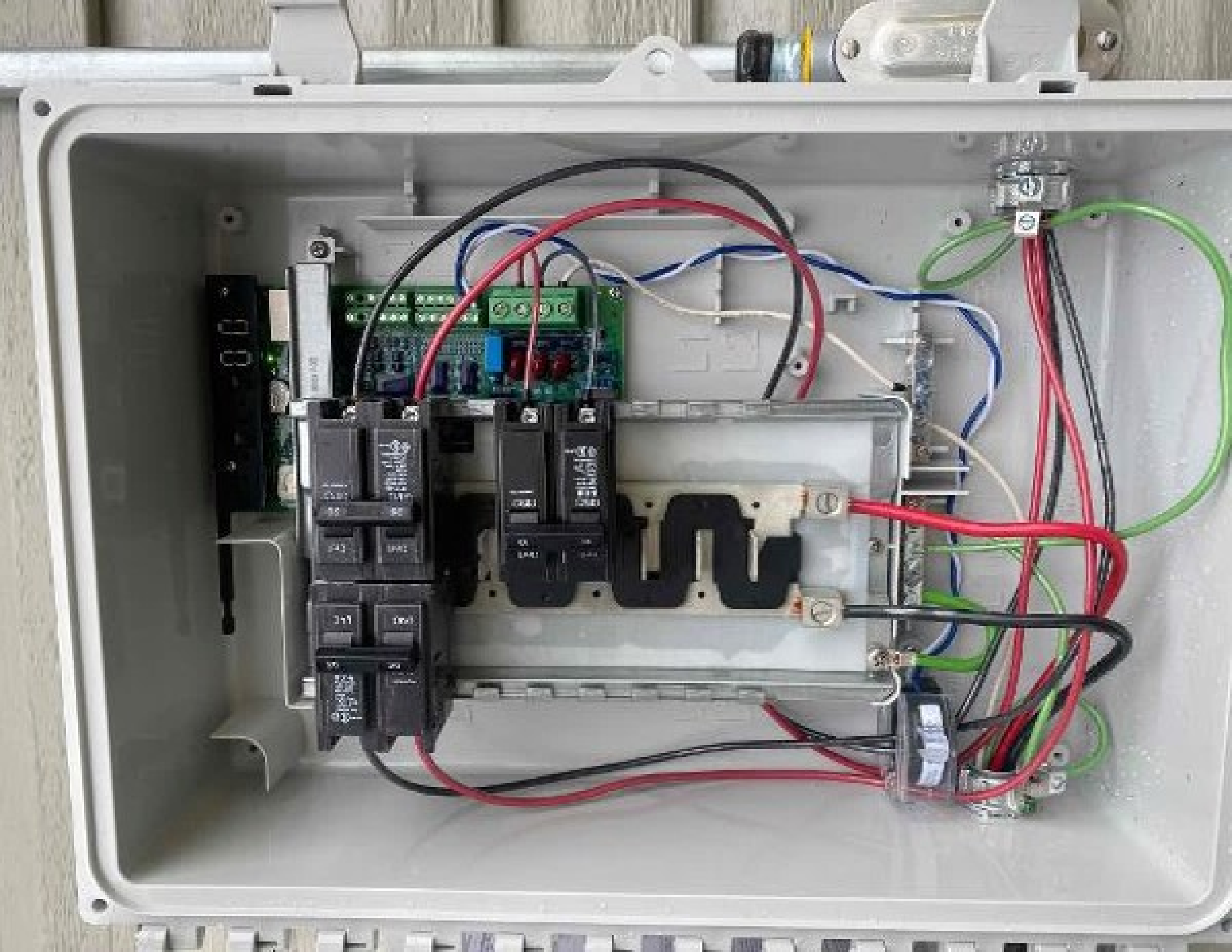
012

UL
CERTIFIED
UL 489A1050

250VAC 20A
+79°C 2046













I/ON

35

O/OFF

10 kA

10 A

10 A

O/OFF

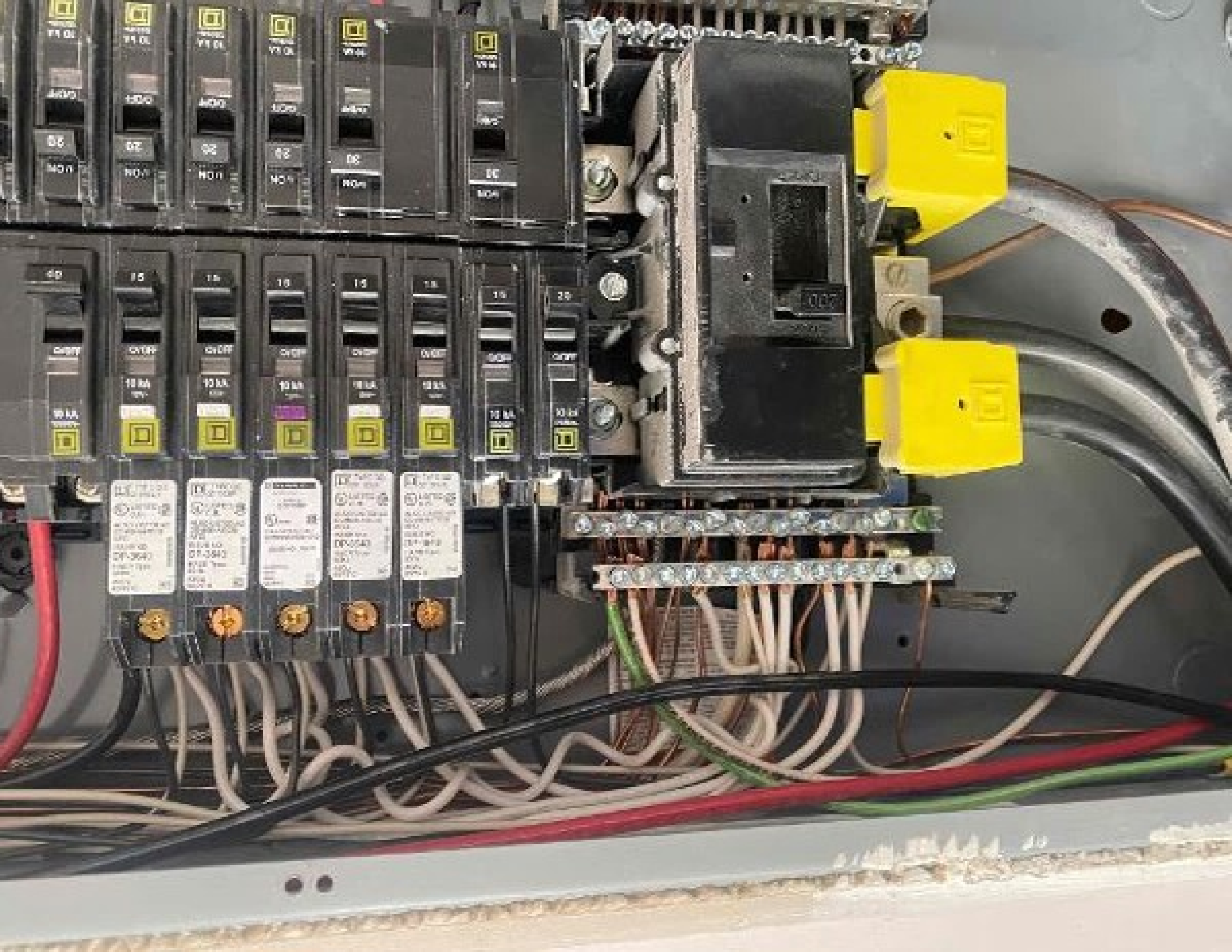
09

I/ON

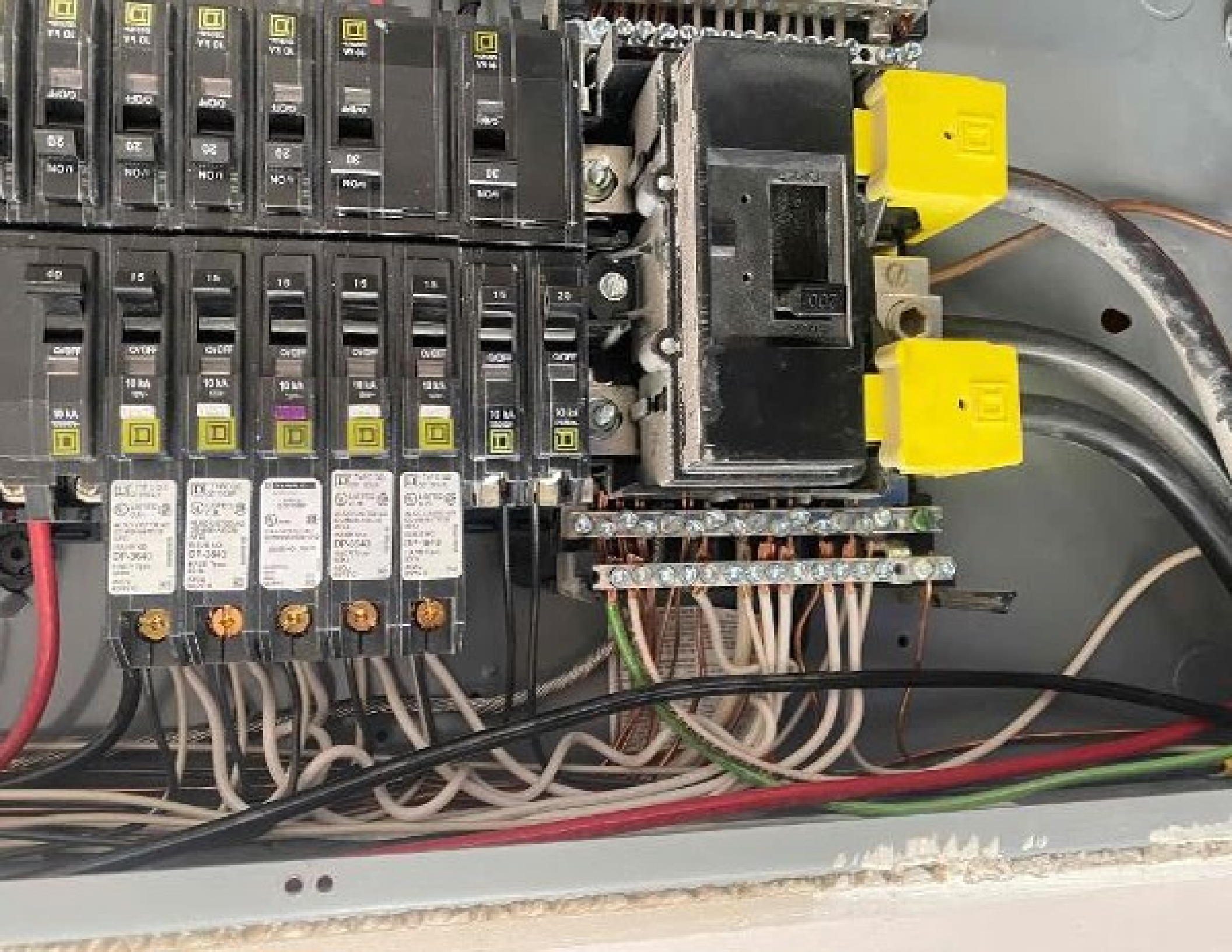
ATTN: V...

ATTN: W...

ATTN: L...









1/ON
35
O/OFF
10 kA
CIRCUIT

10 A
100V
O/OFF
09
1/ON

ATTN: V...
100V





Production

594 W Jun 02, 2021 5:53 PM

7 Wh Lifetime

Consumption



Meter Not Enabled

Monitoring



Connected to Enlighten

Last Report: Jun 02, 2021 5:53 PM

26 Microinverters



26 Detected

Scan Active



26 Communicating



0 Profile Set

Profile: IEEE 1547 default 2015



26 Producing Power









482116022449

482116023338

482116023285

482116023268

482116023324

482116024209

482116024664

482116024591

482116023049

482116023342

482116022023

482116022105

482116022961

482116022952

482116024388

482116024041

MP2

MP1

Envolv Serial Number Label /
Número de serie de Envolv

er.

↑ To Sheet / A la hoja de: _____

Installer/Instalador:

IL Crew 1
6-2-21

5,

6

7

482116022449

482116023338

482116023285

482116023268

482116022324

482116024209

482116024564

24

25

29

22

22

21

20

MP2

Azimuth/Azimuth:

Jessica Weaver

Tilt/Inclinación:

Sheet/Hoja _____ of/de _____

	1	2	3	4
A				
B				
C				
D				
E				
F				
G				
H				
I				
J				
K				
L				
M				
N				
O				
P				
Q				
R				
S				
T				
U				
V				
W				
X				
Y				
Z				



Completed map and upload it to Enphase. Click "Add a New System"

https://enlighten.enphaseenergy.com. Use this map to build the virtual array in Enlighten's Array Builder.

Use the map completo y carguelo en Enphase. Haga clic en "Añadir nuevo sistema"

https://enlighten.enphaseenergy.com. Utilice este mapa para crear el conjunto de paneles en el Creador de conjuntos de paneles de Enlighten.

INSTALLATION MAP

ID: 536480

↑ To Sheet / A is top side

Panel Group/Group de (le groupe)
 Admin/Admin:
 TWR/Division:
 Sheet/Feuille: _____ of/du: _____

Customer/Client:
Jessica Weaver

Emergency Address:
**IL Crew 3
 6-2-21**

N S E W
 N S E W



	1	2	3	4	5	6	7	8	9
A									
B									
C						<div style="border: 2px solid black; padding: 5px;"> <p>Panel Group/Group de (le groupe)</p> <p>Admin/Admin:</p> <p>TWR/Division:</p> <p>Sheet/Feuille: _____ of/du: _____</p> </div>			
D									
E									
F									
G									
H	<div style="border: 2px solid black; padding: 5px;"> <p>Panel Group/Group de (le groupe)</p> <p>Admin/Admin:</p> <p>TWR/Division:</p> <p>Sheet/Feuille: _____ of/du: _____</p> </div>								
J	<div style="border: 2px solid black; padding: 5px;"> <p>Panel Group/Group de (le groupe)</p> <p>Admin/Admin:</p> <p>TWR/Division:</p> <p>Sheet/Feuille: _____ of/du: _____</p> </div>								
K									
L									
M									

MP2

MP1



Production

594 W Jun 02, 2021 5:53 PM

7 Wh Lifetime

Consumption



Meter Not Enabled

Monitoring



Connected to Enlighten

Last Report: Jun 02, 2021 5:53 PM

26 Microinverters



26 Detected

Scan Active



26 Communicating



0 Profile Set

Profile: IEEE 1547 default 2015



26 Producing Power





UNIVERSAL SEM INFINITY RACKING
FOR THE BONDING AND BRIDGING OF ROOFING
© 2014 ALTA













