



TITAN

SOLAR POWER

318

SOLAR
ER.COM





642

TITAN
SOLAR P...
2500 HD



Output Current Vac 240-264Vac
Max Utility Backfeed Current 21Aac
Frequency Min-Nom-Max 26Aac
Output Power Factor 0Aac
Max Ambient Temperature 59.3-80.0-80.5Hz
Enclosure +/-0.85-1
With Integrated ground fault protection per NEC 690.35 (C)
Type 1 Photovoltaic Arc-Fault Circuit-Protection
IP65 / Type 3N
60 C
WI - FI Password: e7N2CKYn
Activation:mHm6 3C1E NrsL JpD7 nPrX PpRD bfg =
WIFI MAC:
28:B7:7C:15:02:16
ZigBee MAC:
PN: SE5000H-US000BNU4
SN: SV4620-0730A62E2-C1



solar**edge**
PHOTOVOLTAIC RAPID
SHUTDOWN SYSTEM



730A62E2-C1



Contains FCC ID: A40PT-PLM, IC: 30816-PLM. The enclosed device complies with part 15 of the FCC Rules. Operation is subject to the following two conditions: (1) This device may not cause harmful interference and (2) This device must accept any interference received, including interference that may cause undesired operation.
PATENT MARKING NOTICE: See www.solar-edge.com/patent
Made in Vietnam

WARNING: PHOTOVOLTAIC POWER SOURCE

solar**edge**
DC Safety Switch
Max DC Voltage 480V
Max DC Current 30A
Temperature Rating 40°C to 50°C

TSP: 68343
Sigrídur Mitchell
318 Mineral Springs Ln.
Fulguary Var.

 0218177D8-F1	 021851704-C1	 02180740F-24	 0218516FE-BA	 0218516F4-B0	
 021851705-C2	 0218516B1-6D	 021813AEB-C7	 02181366E-46	 0218516F6-B2	 02185170E-CB
 02185170C-C9	 021851701-BE	 02185170D-CA	 021851707-C4	 0218516F2-AE	 02181897F-AA





SN 730A62E2-C1







Status

Inverter

SN 730A62E2-C1

Summary

 Power 5 kW	 Voltage 250 Vac	 Frequency 60 Hz
P_OK: 17 of 17 Optimizers Communicating		Server Comm. Connecting Mon. Cellular 
Status Production	Power Limit 5 kW	Switch is On
Cos Phi 1	Q 274 VAR	Country US 240V
DC Voltage 429 Vdc		
Isolation 11000 kOhm	Temp. 110° F	

Disconnect from device



4"

12-18 LOT A

Flex Vent
FROM THE MANUFACTURER OF FLEX DUCT

FLEXI TECHNOLOGY, INC.
A DIVISION OF FLEX INDUSTRIES
WILMINGTON, DE 19804
C/O FLEX

ALSO CLASSIFIED UNDER OTHERS REGULATIONS BY
NATIONAL FIRE PROTECTION ASSOCIATION (NFPA) AND
TESTED FOR PERFORMANCE AGAINST
STANDARDS OF
UL-181A AND UL-181B
LOSS ON FIRE INSTALLATION
R-8





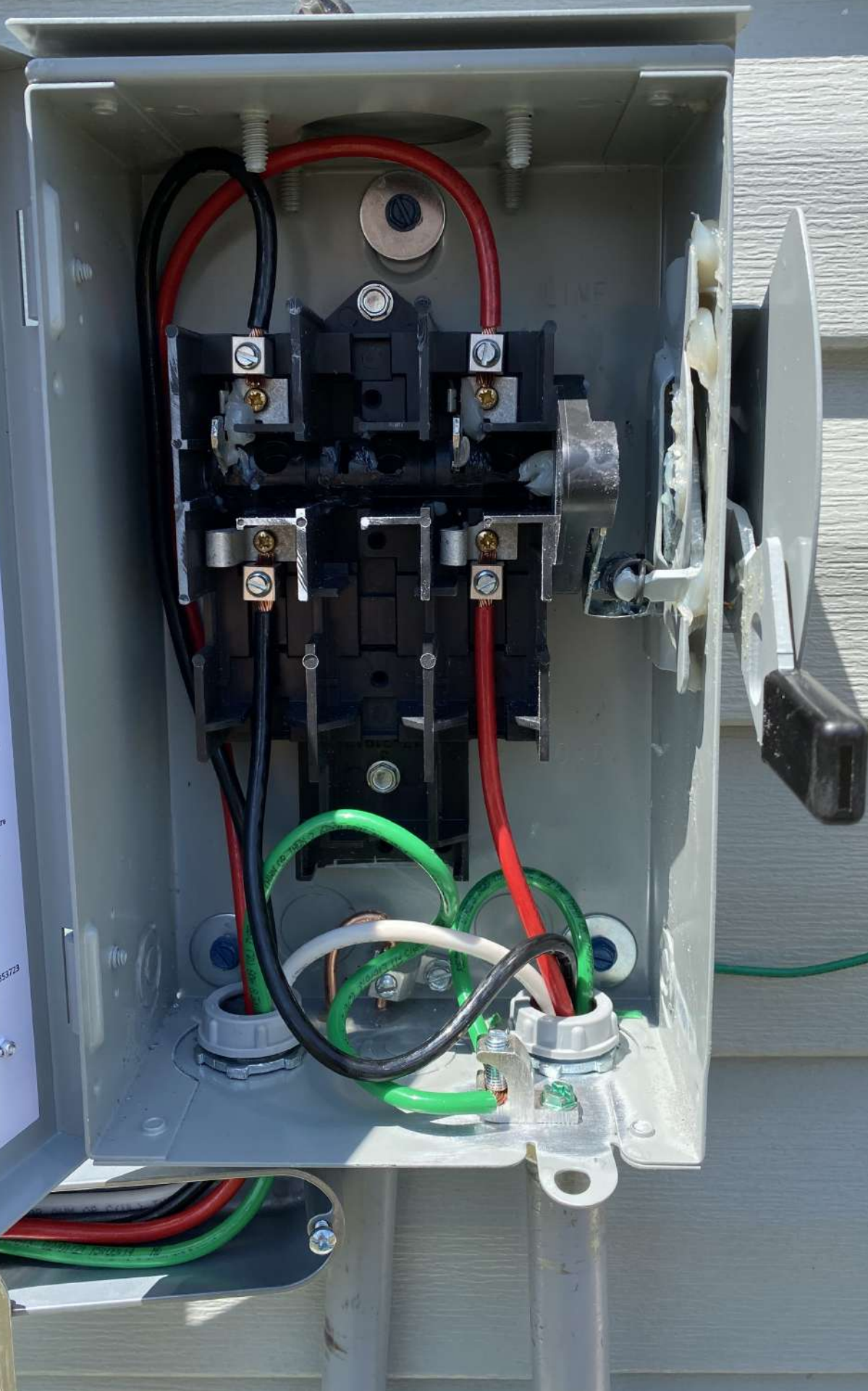


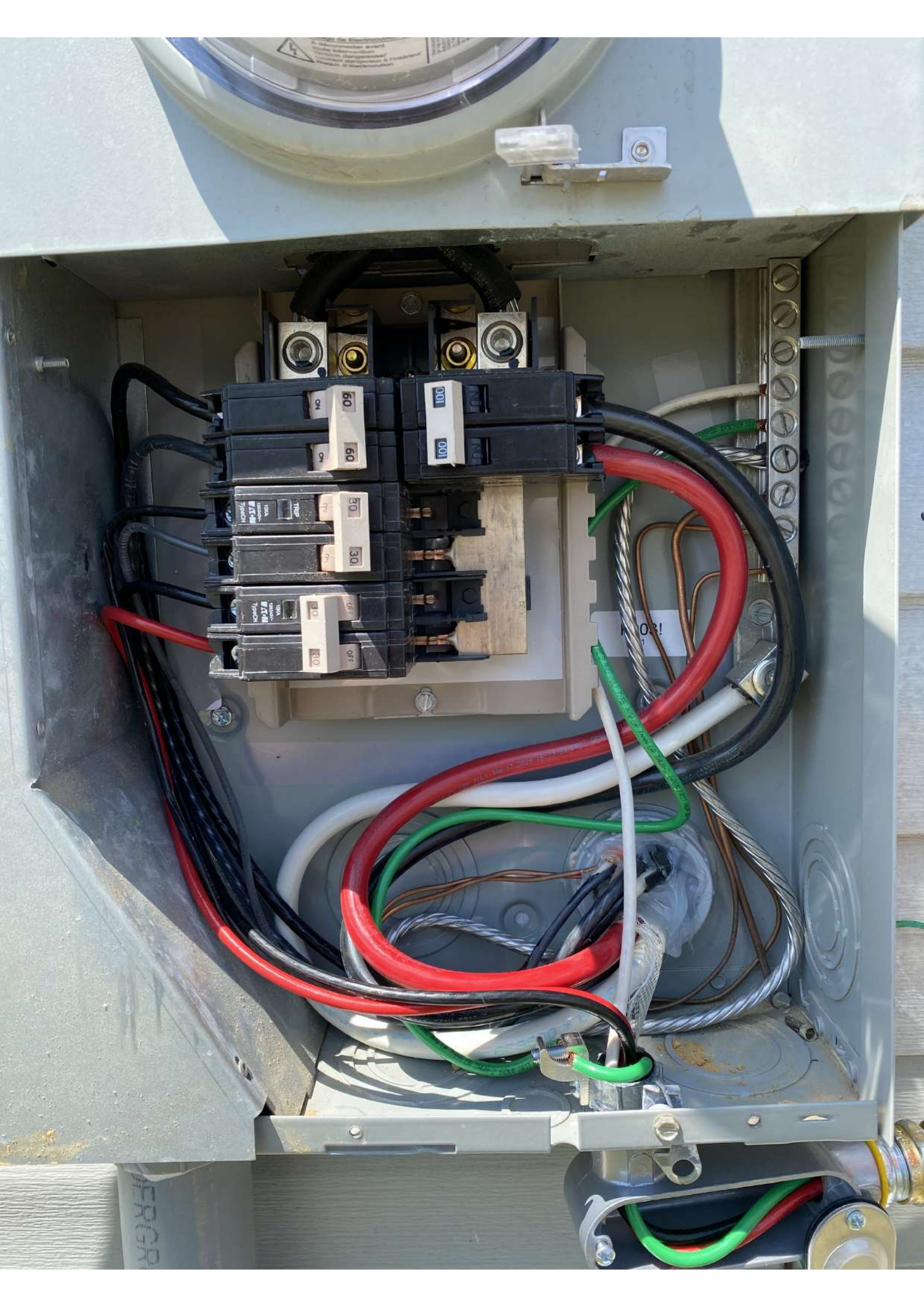
DANGER
PEUT CAUSER DES BLESSURES
Ne touchez pas l'interrupteur lorsque le circuit est sous tension.
Avant de réparer ou d'installer un hublot, assurez-vous que le circuit est déconnecté de la source d'alimentation.
Les fils dénudés sont dangereux.
Ne touchez pas les fils dénudés d'un circuit chargé sans hublot pour éviter les blessures.
Avant de réparer ou d'installer un hublot, assurez-vous que le circuit est déconnecté de la source d'alimentation.
Avant de réparer les pièces, assurez-vous de remettre sous tension.

6-4235-0
UL LISTED
ENCLOSED SWITCH
INTERRUPTEUR EN COFFRET
INTERRUPTEUR SOUS COFFRET
ISSUE NO. AL-72
NOM-367

Este tipo de Acometida cuando se instala el kit de Waeltra es instalada, el voltaje que circula es de 240V - 3 hilos con neutro aislado. Capacidad de entrar no más de 100 000 VA máximo, cuando sea protegido por fusibles o dispositivos de protección para la sobrecorriente a 30 A máximo. Adecuado para la entrada no más de 10 000 A RCM máximo, cuando sea protegido por cualquier dispositivo de sobrecorriente clasificado a 30 A máximo. 60°C o 75°C. / Sección transversal del conductor / AL - CU
Installation: comme équipement de service lorsque installé. Si le kit maître est utilisé, les pontances sont également applicables. (10/010)-367
Capacité de 100 000 ampères-va maximum, lorsque protégé par des fusibles ou des dispositifs de protection pour la surcharge maximum. Convient pour un usage par fusibles ou dispositifs de protection pour la surcharge maximum. 60°C ou 75°C. / Calibre conducteurs / AL - Cu

PUB53723







SIZE COND. #6 AWG





PID
EM

730A62E2 - C1



The enclosed device complies
with the following two conditions:
interference and

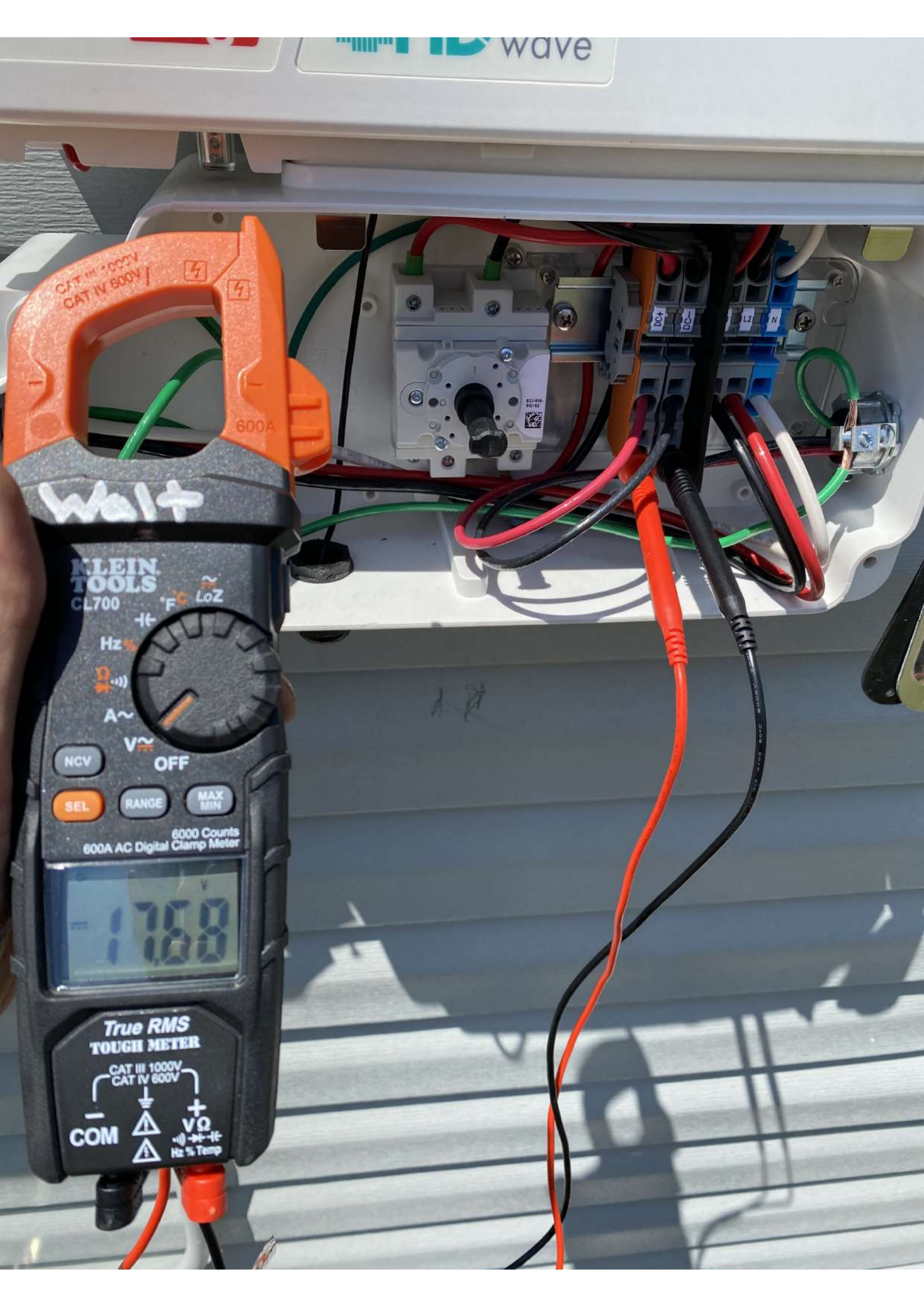
is/patent

Made In Vietnam









wave

CAT III 1000V
CAT IV 600V

600A

Walt

KLEIN TOOLS
CL700

Hz %
A~
V~
OFF

NCV

OFF

SEL

RANGE

MAX MIN

6000 Counts
600A AC Digital Clamp Meter

1.758

True RMS
TOUGH METER

CAT III 1000V
CAT IV 600V

COM

VΩ
Hz % Temp



Grey meter cabinet with an open door. The meter is visible inside. Wires are connected to the terminals below the meter.

Smaller grey junction box with an open door. Internal wiring is visible.

White plastic junction box, closed.

White solar charge controller with an antenna. The terminal block is open, showing internal wiring. The brand name "solar360 HD" is visible on the top.

Grey panel with handwritten notes and a warning label. The notes include "Solar", "AC", and "Warning".

E-T-N
CAT. NO. CMB1212L200BT5
200 AMP 120/240 VOLTS AC
Master Equipment Group (MEG) Approved
FOR THE CONTRACTING INDUSTRY
ALWAYS USE PROTECTIVE AND SAFETY DEVICES
SEE 3





solar edge

Power Optimizer

E.T.N.

solar edge

solar edge
Single Phase Inverter
with HD-Wave Technology
HD
www.solaredge.com

NEW! 25 YEAR LIMITED WARRANTY

solar edge
Single Phase Inverter
with HD-Wave Technology
www.solaredge.com

N!

activation
duration
(t display)



App Store



Google Play



solaredge

PN: SE5000H – US000BNU4



SN: SV4620 – 0730A62E2 – C1



Type 1 Photovoltaic Arc – Fault Circuit – Protection

Made in Vietnam



S/N: SV4620-0730A62E2-C1



Temu all
Tuesday
05/18/21
Sigridor
Mitchell

LG355N1K-B6(AA).AUA
LICENSING
SERIAL NUMBER

66

60



LG355N1K-B6(AA) AUA

LG355N1K-B6(AA) AUA

Model	Resolution	Refresh Rate	Response Time	Panel Type	Viewing Angle	Color Gamut	Panel Size	Weight
LG355N1K-B6(AA) AUA	3550x2600	60Hz	5ms	IPS	178°	sRGB	35.5"	10.5kg

Indications de danger
L'unité est lourde



FURNACE
DISCONNECT.

A/C
DISCONNECT.

PV SOLAR BREAKER
DO NOT RELOCATE THIS
OVERCURRENT DEVICE



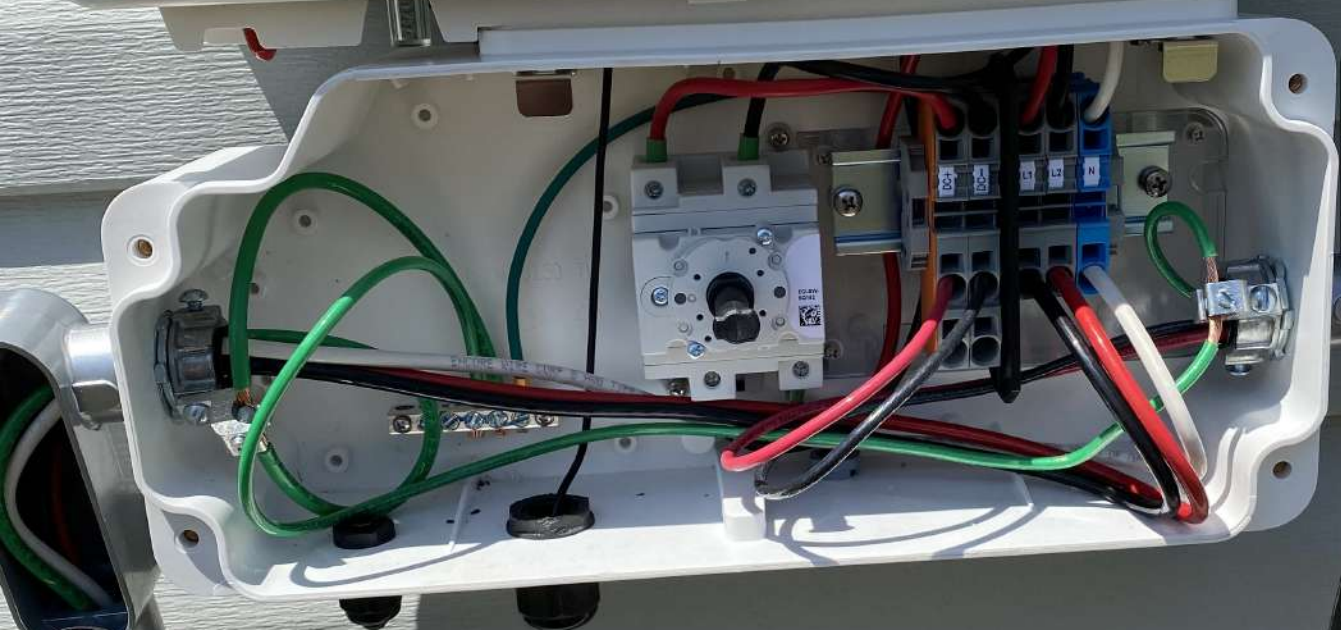
MAIN SERVICE
DISCONNECT
SUB PANEL.



WARNING: PHOTOVOLTAIC PO

solar edge

HD wave



12



318

WELCOME

hello

CAUTION

ING: PHOTOVOLTAIC POWER SOURCE









WARNING

A2
RIRAC-5-T
202007-004



WARNING: PHOTOVOLTAGE POWER SOURCE

15A 125V
30A 250V
Eaton
Eaton
Eaton



0218516FE-BA



Do Not Remove

218516FE-BA



Intertek
4004590



CAUTION

HOT SURFACES-TO REDUCE THE RISK OF BURNS-DO NOT TOUCH.
RISK OF ELECTRIC SHOCK-WHEN THE PHOTOVOLTAIC ARRAY IS EXPOSED TO LIGHT, IT SUPPLIES A DC VOLTAGE TO EQUIPMENT. COVER PV MODULE WITH OPAQUE MATERIAL BEFORE CONNECTING OR DISCONNECTING THIS OPTIMIZER. DURING FAULT,ZERO CURRENT IS SOURCED INTO DC ARRAY BY CONVERTER.

WARNING

ELECTRIC SHOCK HAZARD. THE DC CONDUCTORS OF THIS PHOTOVOLTAIC SYSTEM ARE UNGROUNDED AND MAY BE ENERGIZED.

AVERTISSEMENT

RISQUE DE CHOC ELECTRIQUE: QUAND LE CHAMP PHOTOVOTAIQUE EST EXPOSE A LA LUMIERE, UNE TENSION CC EST FOURNIE A CET EQUIPEMENT. SURFACES CHAUDES: NE PAS TOUCHER, AFIN DE REDUIRE LES RISQUES DE BRULURES LE COURANT DE RETOUR INJECTE PAR LE CONVERTISSEUR EN CAS DE DEFAILLANCE DANS LE MODULE PV EST TOUJOURS NUL.



12AWG 105°C
K10



LG355N1K - B6

Serial No.	102K5BM212LT	Pmax (Bifi 100)	356.4 W
Manufactured Date	210201	Pmax Bifaciality coefficient	0.06
Pmax (-0/+3)%	355 W	Voc Bifaciality coefficient	0.88
Vmpp	35.00 V	Isc Bifaciality coefficient	0.07
Impp	10.15 A	Max. Sys. Voltage (UL)	1,000 V
Voc (-5/+5)%	41.50 V	Max. Sys. Voltage (IEC/CSA)	1,000 V
Isc (-5/+5)%	10.72 A	Max. Series Fuse	20 A
Max. Test Load	5400 Pa	Fire Type	Type 2

*See installation instructions for Installation Requirements to Achieve a Specified System.
 Fire Class Rating with this Product:
 *Standard Test Condition : 1,000W/m², AM 1.5 Spectrum, Cell temperature 25 °C
 *See module installation manual for appropriate mating connectors.
 *Tested to IEC 61215-2; 2016, IEC 61730-1; 2016, UL/CSA 61730

⚠ WARNING/AVERTISSEMENT

	Risk of electric shock/Précaution de choc électrique DO NOT connect or disconnect plug contacts while a system is under load current. DO NOT approach the damaged or broken module, unless you are an expert. Otherwise, it may result in a hazardous situation or a serious injury. Ne connectez ou déconnectez pas le connecteur pendant qu'un système est sous la charge électrique. Ne approchez pas un module endommagé ou détérioré, si vous n'êtes pas un expert. Sinon, il peut en résulter une situation hasardeuse ou une blessure sérieuse.
	Risk of fires and burns/Précaution de feu et incendie DO NOT contact with electrically active parts. Ne touchez pas des parts actives électriquement.
	Refer to installation and operation manual before installing, operation or servicing this unit. Avant d'installer ou mettre en service cette unité, se référer au manuel d'installation et d'opération.



*Maximum series overcurrent protective device, where required.
 *For field connections, use 12AWG copper wires only. Insulated for a minimum of 90°C, rated for wet conditions and resistant to ultraviolet radiation (where exposed).

Produced by LG Electronics Inc.
 Made in Korea

MEZ62435788(REV00)



Everest Solar Systems, LLC

LISTED
BY LISTING AGENCY
E467724

RailConn CR 44-X Struct Set, Mill
OCD Protection Rating 30 AMP
Conforms to ANSI/UL 2703

02205721



LG355N1K-B6



Serial No.	10245BM121LT	Pmax (B6, 100)	355 W	Voc Bifactorial coefficient	25.8 A
Manufactured Date	210201	Voc Bifactorial coefficient	0.08	IsC Bifactorial coefficient	0.08
Pmax (-0/+3%)	355 W	IsC Bifactorial coefficient	0.07	Max. Sys. Voltage (U)	1200 V
Vmpp	35.00 V	Max. Sys. Voltage (U)	1200 V	Max. Series Fuse	20 A
Imp	10.15 A	Max. Test Load	5400 Pa	Fire Type	Type 2
Voc (-5/+5%)	41.50 V				
IsC (-5/+5%)	10.72 A				

*See installation instructions for installation requirements to achieve a Specific System Fire Class Rating with this Product.
 *Standard Test Condition : 1,000W/m², AM 1.5 Spectrum, Cell temperature 25°C
 *See module installation manual for appropriate mating connectors.
 **Tested to IEC 61215-2:2016, IEC 61730-1:2016, UL1709

⚠ WARNING/AVERTISSEMENT

Risk of electric shock/Précaution de choc électrique
 DO NOT connect or disconnect plug contacts while a system is under load current. DO NOT approach the damaged or broken module, unless you are an expert. Otherwise, it may result in a hazardous situation or a serious injury.

Risk of fires and burns/Précaution de feu et incendie
 Do not touch the active parts of the module. Do not touch the active parts of the module when the system is under load.

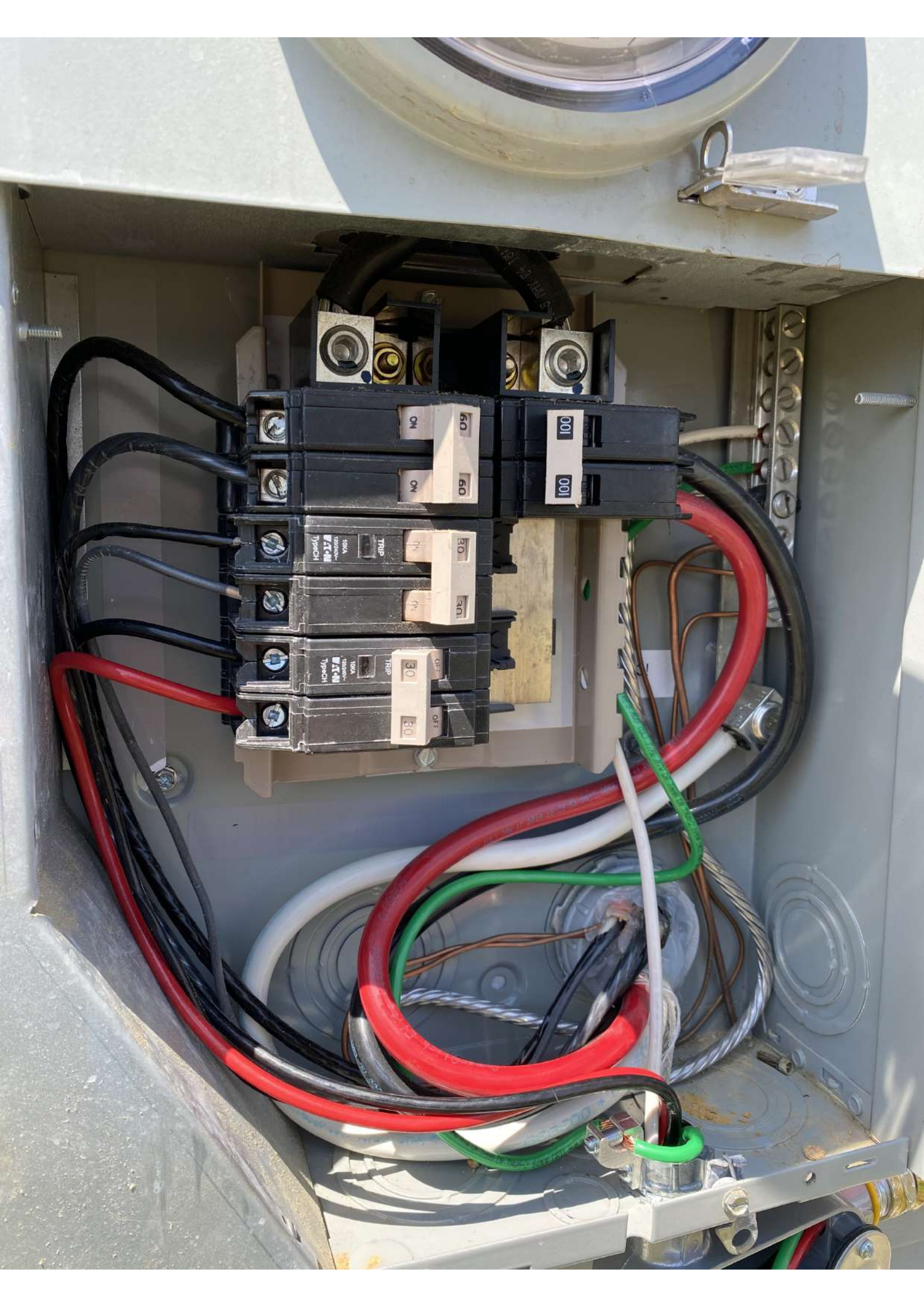
Risk of electric shock/Précaution de choc électrique
 DO NOT touch the active parts of the module when the system is under load.

Refer to installation and operation manual before installing, operation or servicing this unit.
 Avant d'installer ou mettre en service cette unité, se référer au manuel d'installation et d'opération.



MEZ224351881REC1001

Produced by LG Electronics Inc.
 Made in Korea



EATON®

General Duty Safety Switch
Interrupteur de sécurité à usage général
Interruptor de seguridad de servicio general

30 A, 240 V~, 60 Hz

Complete ratings inside
Valeurs nominales complètes à l'intérieur
Información completa de capacidades en el interior

Further instructions inside
Autres instructions à l'intérieur
Instrucciones adicionales en el interior

Made in U.S.A. / Fabriqué aux É.-U. / Hecho en E.U.A.

⚠ DANGER
HAZARDOUS VOLTAGE. WILL CAUSE SEVERE INJURY OR DEATH.
● Never operate switch with cover open.
● Turn OFF power ahead of switch before doing any work inside. Replace all parts. Close cover before turning power ON.

TENSION DANGEREUSE. PEUT CAUSER DES BLESSURES GRAVES OU LA MORT.
● Ne jamais manœuvrer l'interrupteur lorsque le couvercle est ouvert.
● Couper l'alimentation en amont de l'interrupteur avant toute intervention. Remplacer les pièces. Fermer le couvercle avant de remettre sous tension.

⚠ PELIGRO
VOLTAJE PELIGROSO. PUEDE CAUSAR HERIDAS SEVERAS O LA MUERTE.
● Nunca opere el interruptor con la cubierta abierta.
● Desconectar la alimentación del interruptor antes de trabajar dentro del mismo. Reemplazar todas las partes. Cerrar la cubierta antes de energizar el interruptor.

30-43079

ON
|

OFF
○

WARNING
ELECTRICAL SHOCK HAZARD

CAUTION
DUAL POWER SOURCE
SECOND SOURCE IS
PHOTOVOLTAIC SYSTEM

PHOTOVOLTAIC AC DISCONNECT
MAXIMUM AC OPERATING CURRENT : A
MAXIMUM AC OPERATING VOLTAGE : 240V









Create

- Miami 02
- Miami 03
- Miami 04
- Miguel Vazquez
- Miguel Vazquez Jr.
- Orlando 01
- Orlando 02
- Orlando 03
- Orlando 04
- Orlando 05
- Orlando 06
- Orlando 07
- Orlando 08
- Orlando 09
- Orlando 10
- Orlando 11
- Orlando 12
- Orlando 13
- Raleigh 01
- Raleigh 02
- Reminders
- Tasks

GMT-04	SUN 9	MON 10
4 AM		
5 AM		
6 AM		
7 AM		
8 AM		fastrak, 7:30am
9 AM		TSP72799: Elizabeth Poindexter 5923 8am - 4pm 5923 highland gro Summerfield, NC
10 AM		
11 AM		
12 PM		
1 PM		
2 PM		
3 PM		
4 PM		
5 PM		

TSP68343: Sigridur Mitchell
Thursday, May 13 · 7:30am - 4:00pm

318 Mineral Spring Ln. Fuquay Varina, NC

TSP68343: Sigridur Mitchell 318 318 Mineral Spring Ln. Fuquay Varina, NC
Homeowner Phone # - (919) 601-3922
Homeowner Email - Siggamitchell@gmail.com
Sales Rep Name - taylor Ferimer
Sales Rep Phone # -

System Size - 6035 Watts
Module Count - 17
Inverter 1 - SE5000H SETAPP
Inverter 2 -
Battery -
Partner - 03270 LGCY Power
Customer Contact Preference - Both
Financier - LOANPAL : Loanpal Loan 25 Year and 2.99 APR
Financier ID - 21-08-043877
Utility - Duke Energy (NC)
AHJ - Harnett County (NC)
Contract Price - \$27093.01
Special Install Instructions:
Notes From Sales:

[Update Project](#)
[Upload Link](#)
[All Project Files](#)
[Route Me to Location](#)

THU 13
TSP68343: Sigridur Mitchell 7:30am - 4pm 318 Mineral Spring Ln. Fuquay Varina, NC

Create

- Miami U3
- Miami 04
- Miguel Vazquez
- Miguel Vazquez Jr.
- Orlando 01
- Orlando 02
- Orlando 03
- Orlando 04
- Orlando 05
- Orlando 06
- Orlando 07
- Orlando 08
- Orlando 09
- Orlando 10
- Orlando 11
- Orlando 12
- Orlando 13
- Raleigh 01
- Raleigh 02
- Reminders
- Tasks
- Yuma 03

✎
🗑
✉
⋮
✕

TSP68343: Sigridur Mitchell
 Tuesday, May 18 · 7:00am – 4:00pm

📍 318 Mineral Spring Ln. Fuquay Varina, NC

☰

PROJECT [Sigridur Mitchell 318 : 318 Mineral Spring Ln. Fuquay Varina NC 27526 : TSP68343](#)

PROJECT SUMMARY**TSP68343: Sigridur Mitchell**
318 318 Mineral Spring Ln. Fuquay Varina, NC
 Homeowner Phone # - (919) 601-3922
 Homeowner Email - Siggamitchell@gmail.com
 Sales Rep Name - taylor Ferimer
 Sales Rep Phone # -

System Size - 6035 Watts
 Module - LG 355
 Module Count - 17
 Inverter 1 - SE5000H SETAPP
 Inverter 2 -
 Battery -
 Partner - 03270 LGCY Power
 Customer Contact Preference - Both
 Financier - LOANPAL : Loanpal Loan 25 Year and 2.99 APR
 Financier ID - 21-08-043877
 Utility - Duke Energy (NC)
 AHJ - Harnett County (NC)
 Contract Price - \$27093.01
 Special Install Instructions:
 Notes From Sales:

[Update Project](#)

TUE
18

FastTrack

TSP68343: Sigridur Mitchell
 7am – 4pm
 318 Mineral Spring Ln. Fuquay Varina, NC

TSP65
 7am –
 2920 P
 Zebulo

3 PM

Event saved