

Eaton

General Duty Safety Switch
Interrupteur de sécurité à usage général
Interruptor de seguridad de servicio general

60 A, 240 V~, 60 Hz

Complete ratings inside
Valeurs nominales complètes à l'intérieur
Información completa de capacidades en el interior

Further instructions inside
Autres instructions à l'intérieur
Instrucciones adicionales en el interior

Made in U.S.A. / Fabriqué aux É.-U. / Hecho en E.U.A.



⚠ DANGER

HAZARDOUS VOLTAGE. WILL CAUSE SEVERE INJURY OR DEATH.

- Never operate switch with cover open.
- Turn OFF power ahead of switch before doing any work inside. Replace all parts. Close cover before turning power ON.

TENSION DANGEREUSE. PEUT CAUSER DES BLESSURES GRAVES OU LA MORT.

- Ne jamais manœuvrer l'interrupteur lorsque le couvercle est ouvert.
- Couper l'alimentation en amont de l'interrupteur avant toute intervention. Remplacer les pièces. Fermer le couvercle avant de remettre sous tension.

⚠ PELIGRO

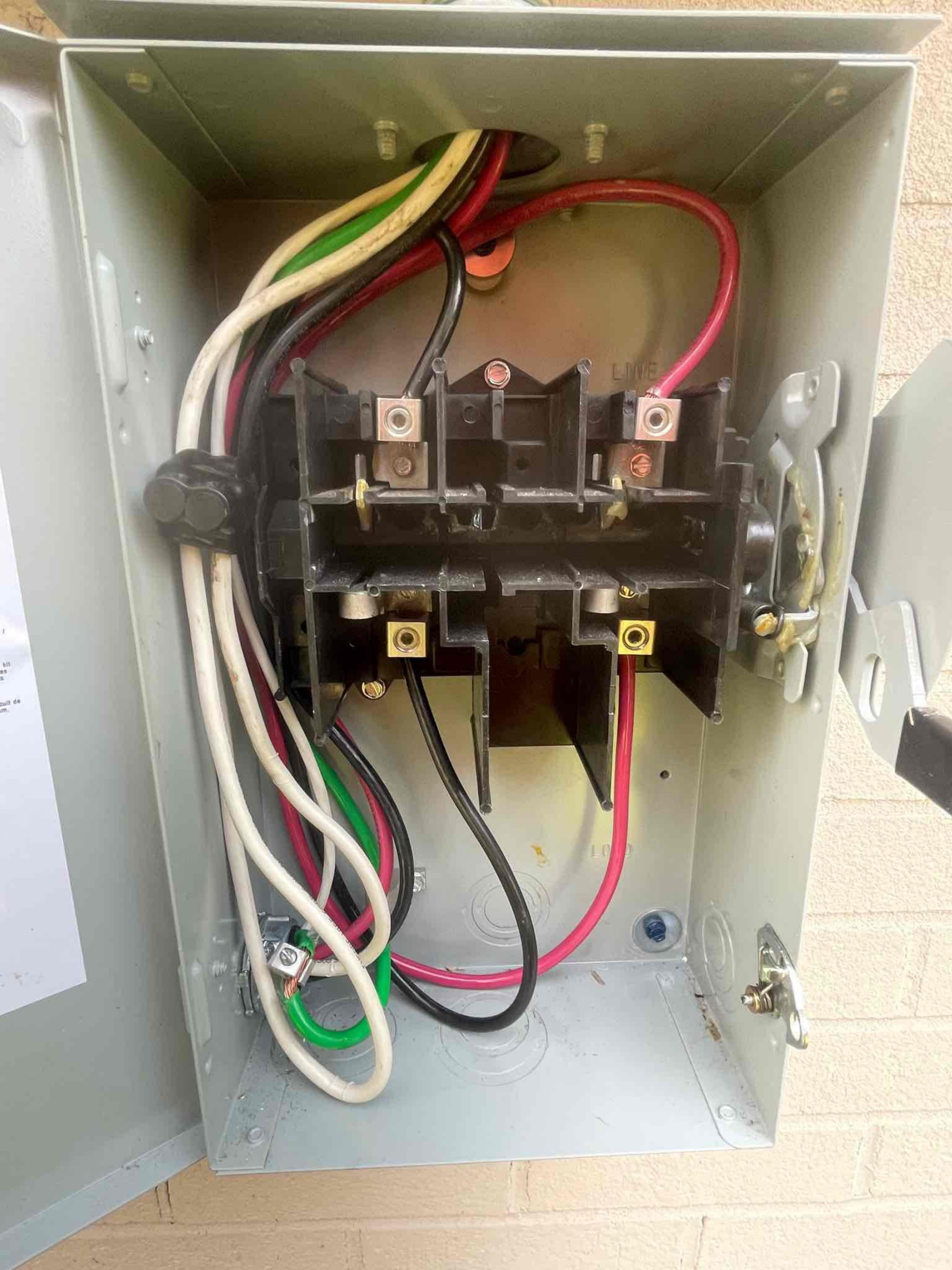
VOLTAJE PELIGROSO. PUEDE CAUSAR HERIDAS SEVERAS O LA MUERTE.

- Nunca opere el interruptor con la cubierta abierta.
- Desconectar la alimentación del interruptor antes de trabajar dentro del mismo. Reemplazar todas las partes. Cerrar la cubierta antes de energizar el interruptor.

30-43080

596-

MADE IN U.S.A.







WARNING
POWER SOURCE OUTPUT CONNECTION
DO NOT RELOCATE THIS OVERCURRENT DEVICE.

CAUTION
PHOTOVOLTAIC SYSTEM CIRCUIT IS BACKFED

WARNING
DUAL POWER SUPPLY
SOURCES: UTILITY GRID
AND PV SOLAR
ELECTRIC SYSTEM



F.T.N.

PHOTOVOLTAIC AC D
MAXIMUM OPERATING CURRENT
NOMINAL OPERATING AC VOLTAGE

WARNING
ELECTRICAL SHOCK HAZARD
IF A GROUND FAULT IS INDICATED
NORMALLY GROUNDED CONDUCTORS
MAY BE UNGROUNDED AND ENERGIZED

WARNING
THIS EQUIPMENT FED BY
MULTIPLE SOURCES.
TOTAL RATING OF ALL OVERCURRENT
DEVICES EXCLUDING MAIN POWER
SUPPLY SHALL NOT EXCEED
CAPACITY OF BUSBAR


WARNING
DUAL POWER SUPPLY
SOURCES: UTILITY GRID
AND PV SOLAR
ELECTRIC SYSTEM

**SOLAR PV SYSTEM EQUIPPED
WITH RAPID SHUTDOWN**

TURN RAPID SHUTDOWN
SWITCH TO THE
"OFF" POSITION TO
SHUT DOWN PV SYSTEM
AND REDUCE
SHOCK HAZARD
IN THE ARRAY

DC JUNCTION BOX

CAUTION: SOLAR CIRCUIT

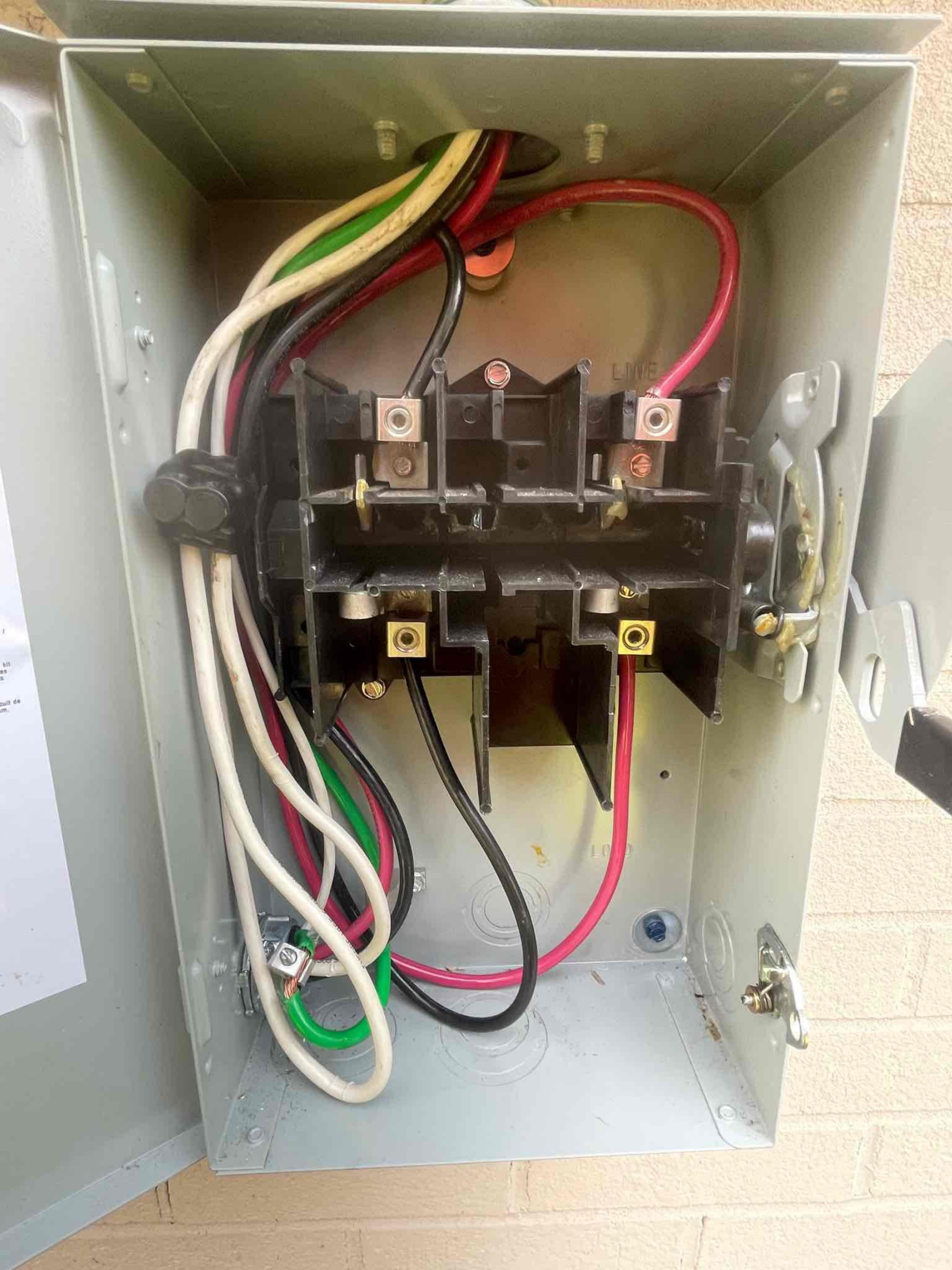
 ENPHASE

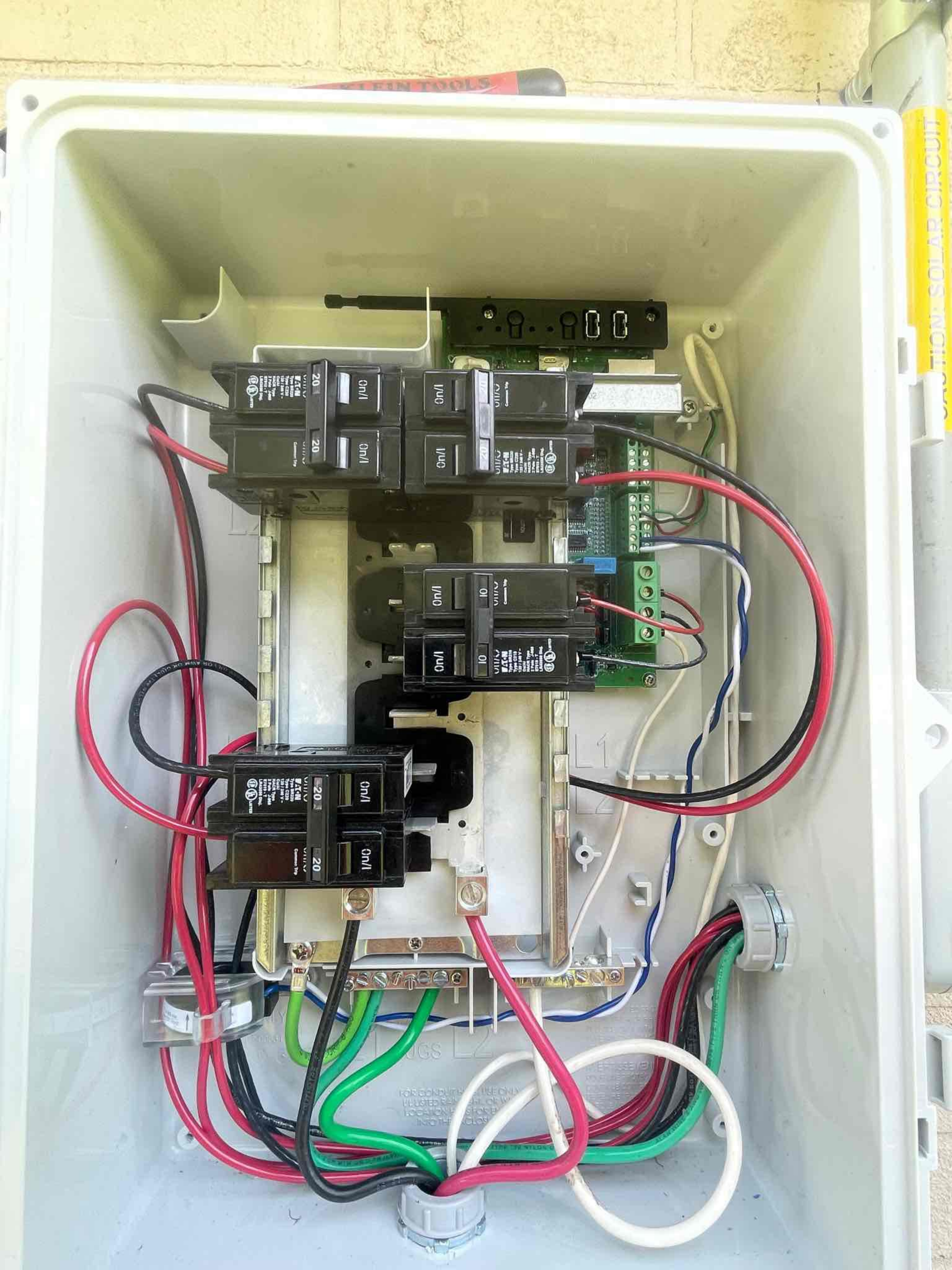
⚠ WARNING
POWER SOURCE OUTPUT CONNECTION
DO NOT RELOCATE THE OVERCURRENT DEVICE

⚠ CAUTION





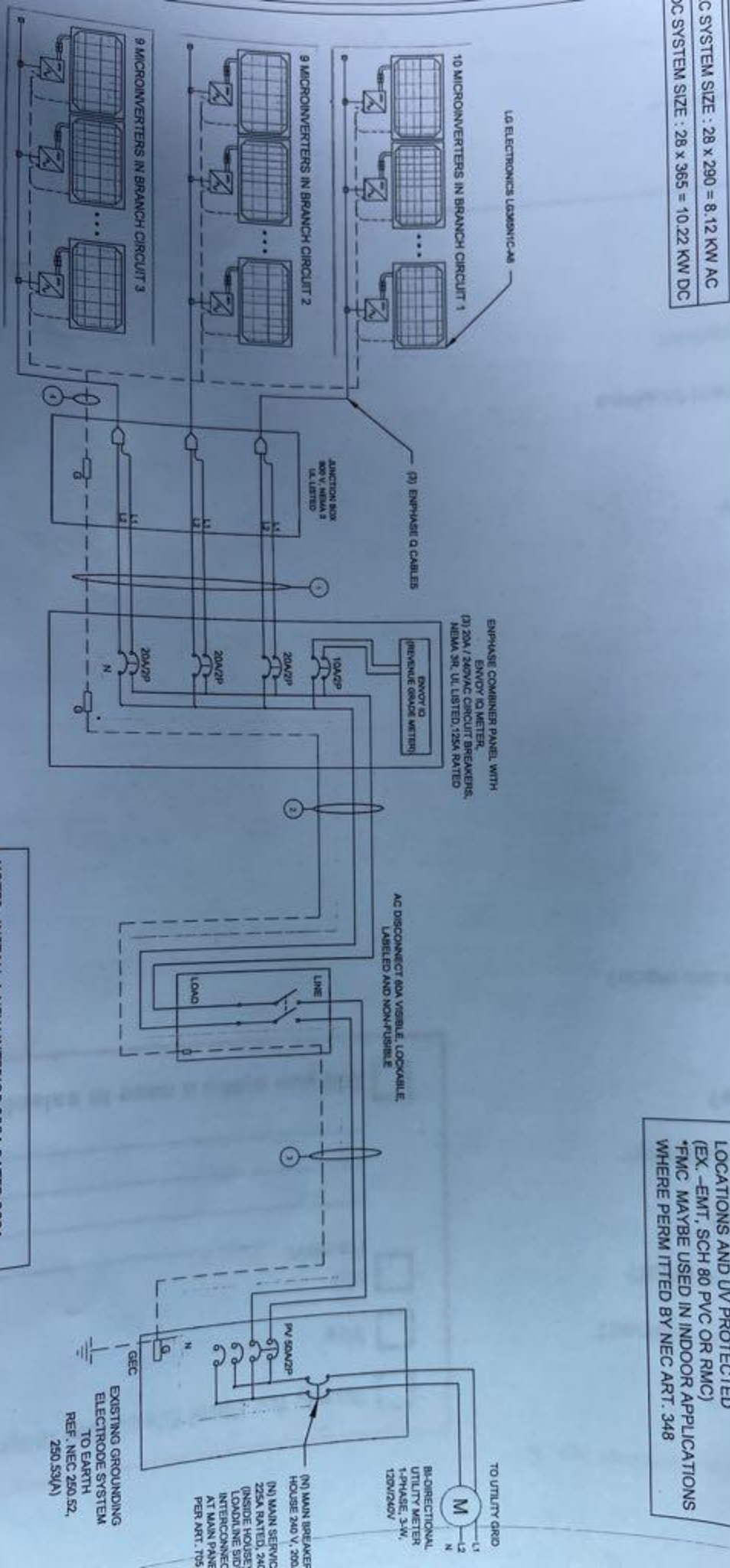




SOLAR MODULE	
MANUFACTURER / MODEL #	LG ELECTRONICS LG365N1C-A6
MP	34.5V
MP	10.58A
POC	41.6V
SC	11.27A
TEMP. COEFF. VOC	-0.26%/°C
MODULE DIMENSION	68.5" L x 41.0" W x 1.57" D (In Inch)
DC SYSTEM SIZE	28 x 290 = 8.12 KW AC
DC SYSTEM SIZE	28 x 365 = 10.22 KW DC

MANUFACTURER / MODEL #	ENPHASE IQ 7 PLUS MICROINVERTER
MIN/MAX DC VOLT RATING	22V MIN/ 80V MAX
MAX INPUT POWER	235W-440W
NOMINAL AC VOLTAGE RATING	240V/ 211-264V
MAX AC CURRENT	1.21A
MAX MODULES PER STRING	13 (SINGLE PHASE)
MAX OUTPUT POWER	290 VA

TAG	DESCRIPTION
1	#12/2 ROMEX IN ATTIC/ #12 THWN-2 ON EXTER & (1)#6 THWN-2 GROUND / (GN)
2	#6 THWN-2 & (1)#6 THWN-2 GROUND / (GN)
3	#6 THWN-2 & (1)#6 THWN-2 GROUND / (GN)
4	(1)#6 BARE GROUND



(GN) GENERAL CONDUIT NOTE :
 CONDUIT TO BE UL LISTED FOR WET
 LOCATIONS AND UV PROTECTED
 (EX. -EMT, SCH 80 PVC OR RMC)
 *FMC MAYBE USED IN INDOOR APPLICATIONS
 WHERE PERMITTED BY NEC ART. 348

NOTES: INSTALL A NEW INTERIOR 225A RATED 200A
 MAIN PANEL. MAY NEED TO UPSIZE FEED WIRE TO
 2/0. LAND A 50A SOLAR BREAKER IN THE NEW
 INTERIOR MAIN PANEL. USE #6 WIRE.

EXISTING GROUNDING
 ELECTRODE SYSTEM
 TO EARTH
 REF. NEC 250.52,
 250.53(A)

(N) MAIN BREAKER
 HOUSE 240 V, 200A
 (N) MAIN SERVICE
 225A RATED, 240V
 (INSIDE HOUSE)
 LOADLINE END
 INTERCONNECT
 AT MAIN PANEL
 PER ART. 705

BI-DIRECTIONAL
 UTILITY METER
 1-PHASE, 3-W,
 120V/240V

TO UTILITY GRID

Electrical Incomplete

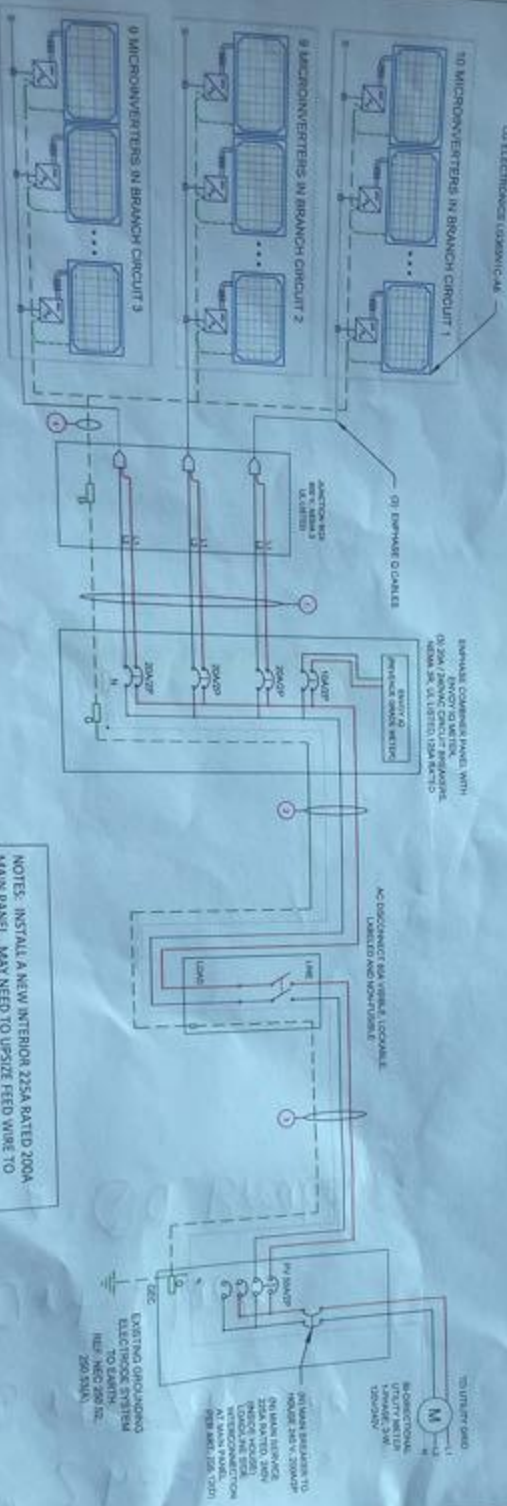
Camelot 11

SOLAR MODULE SPECIFICATIONS	
MANUFACTURER / MODEL #	
VMP	34.5V
IMP	10.52A
VOC	41.8V
ISC	11.27A
TEMP COEFF VOC	-0.28%/C
MODULE DIMENSION	68.5" L x 41.0" W x 1.57" D (in high)
AC SYSTEM SIZE	28 x 280 = 8.12 KW AC
DC SYSTEM SIZE	28 x 365 = 10.22 KW DC

INVERTER SPECIFICATIONS	
MANUFACTURER / MODEL #	SUNPRO 207 PLUS MICROINVERTER
MAXIMUM DC VOLT RATING	50V MAX
MAX INPUT POWER	200W MAX
NOMINAL AC VOLTAGE RATING	120V 50/60HZ
MAX AC CURRENT	1.71A
MAX MODULES PER STRING	12 (SINGLE PHASE)
MAX OUTPUT POWER	200 VA

TAG	DESCRIPTION	WIRE / CONDUIT SCHEDULE
1	#12 ROMEY IN ATTIC / #12 THWN-2 ON EXTERIOR	
2	#8 THWN-2 & (1) #8 THWN-2 GROUND / (GN)	
3	#8 THWN-2 & (1) #8 THWN-2 GROUND / (GN)	
4	(1) #8 BARE GROUND	

(GN) GENERAL CONDUIT NOTE:
CONDUIT TO BE UL LISTED FOR WET LOCATIONS AND UV PROTECTED (EX - EMT, SCH 80 PVC OR RAC).
FMC MAYBE USED IN INDOOR APPLICATIONS WHERE PERM ITTED BY NEC ART. 348



NOTES: INSTALL A NEW INTERIOR 225A RATED 200A MAIN PANEL. MAY NEED TO UPSIZE FEED WIRE TO 2/0. LAND A 50A SOLAR BREAKER IN THE NEW INTERIOR MAIN PANEL. USE #6 WIRE.

NO.	DATE	DESCRIPTION

DRAWN DATE: 08/20/21
 DRAWN BY: VAP
 CHECKED BY: VAP
 SHEET NUMBER: E-601

PROJECT NAME & ADDRESS
THESELOMA MCLEAN
 284 SANDCLAY DR,
 SPRING LAKE, NC 28390,
 USA

SUNPRO
 22171 MCH RD
 MANDEVILLE, LA 70471
 PHONE: 9152011490

7/28/2021

Erick C. ++ RAL Theselonía Mclean - Electrical Incomplete | Sunpro | Teamup

++ RAL - Theselonía Mclean - **Electrical Incomplete** Complete!!!

Just need to schedule final inspection

Thu Jul 29 2021

All day

Add

Calendar

x Raleigh > ELECTRICAL

x Raleigh > UPGRADE/TEMP DISC

Who

919-986-7280, 919-368-5252

Where

284 Sandclay Dr., Spring Lake, NC 28390

Description

7/27 - 8:52 - amh - Confirmed apptmt. tomorrow.

Will need a D/R, panel upgrade.

Permit #ERES2104-0061

South River EMC - 910-892-8071, scheduled by HO

Harnett County - Donna - 910-893-7525, call in AM to rqst. afternoon for inspection.

8-11am arrival, please call when on the way.

7/6 - amh - An additional panel needs to be installed outside the main panel is inside the house with long reach and difficult access. Run CTs use cable # 6 for power with a 50Amp breaker. May need a panel upgrade.

Comments: 0 [Add Comment](#)

Created 22 days ago by Modify, last updated 4 hours ago by Modify



ELECTRICAL RESIDENTIAL

910-893-7525

www.harnett.org

PERMIT NUMBER

ERES2104-0061

JOB ADDRESS: 284 SANDCLAY DR	PERMIT SUBTYPE: RESIDENTIAL SOLAR PANELS	PARCEL NO: 0513-85-2075.000
DESCRIPTION: 28 roof top solar panels	DATE ISSUED: 5/25/2021	DATE EXPIRED:
PLAN NAME:	ZONING DISTRICT: RA-20M - 0.48 acres (100.0%)	

APPLICANT: Marc Jones Construction LLC DBA Sunpro Solar 22171 MCH Rd Mandeville, LA 70471	PHONE: (803)830-3867 EMAIL: lharrison@theprocompanies.com
CONTRACTOR: Marc Jones Construction LLC DBA Sunpro Solar 22171 MCH Rd Mandeville, LA 70471	PHONE: (803)830-3867 EMAIL: lharrison@theprocompanies.com
OWNER: MCLEAN THESELONIA 284 SANDCLAY DR SPRING LAKE, NC 28390 SPRING LAKE, NC 28390-7832	PHONE: EMAIL:

REQUIRED INSPECTIONS

INSPECTION TYPE	APPROVAL	DATE	COMMENTS
FINAL**			
ROUGH IN			



122102036235

Done

Meters

Exit Wizard

Set Up Production Meter

Current Power Production

29 Jul, 2021 4:30:24 PM

**5.68 kW**

L1(A) 2.84 kW

L2(B) 2.84 kW

- Make sure the PV circuits are switched ON and are producing power (the reconnection period has completed).

Next



Overview



Micros



Storage



Meters



Network



122102036235

Done

Microinverters

28 of 28 Detected

Scan Inactive

 Microinverter Production

All

Status

Manage

Serial Number



- 202110024724
Installed Jul 29, 2021 4:25 PM
- 202110026249
Installed Jul 29, 2021 4:27 PM
- 202110047181
Installed Jul 29, 2021 4:25 PM
- 202110047993
Installed Jul 29, 2021 4:26 PM
- 202110049207
Installed Jul 29, 2021 4:26 PM
- 202110051583
Installed Jul 29, 2021 4:25 PM



Overview

Micros

Storage

Meters

Network



ENPHASE

IQ COMBINER 3 ES



SAFETY US CA
SECURITE US CA
E341166

PHOTOVOLTAIC COMBINER BOX X-IQ-AM1-240-3-ES

ELECTRICAL RATINGS:

VOLTAGE: 240VAC, 60Hz
DG BREAKERS: 80A MAX (COMBINED)
DG INPUTS: 64A MAX (COMBINED)
OUTPUT: 65A MAX, 90A MAX FEEDER OCPD
TEMPERATURE: 46°C MAX AMBIENT
USE ONLY EATON BR SERIES BREAKERS (60A MAX)

S/N:



122102036235

P/N:



880-00820 05

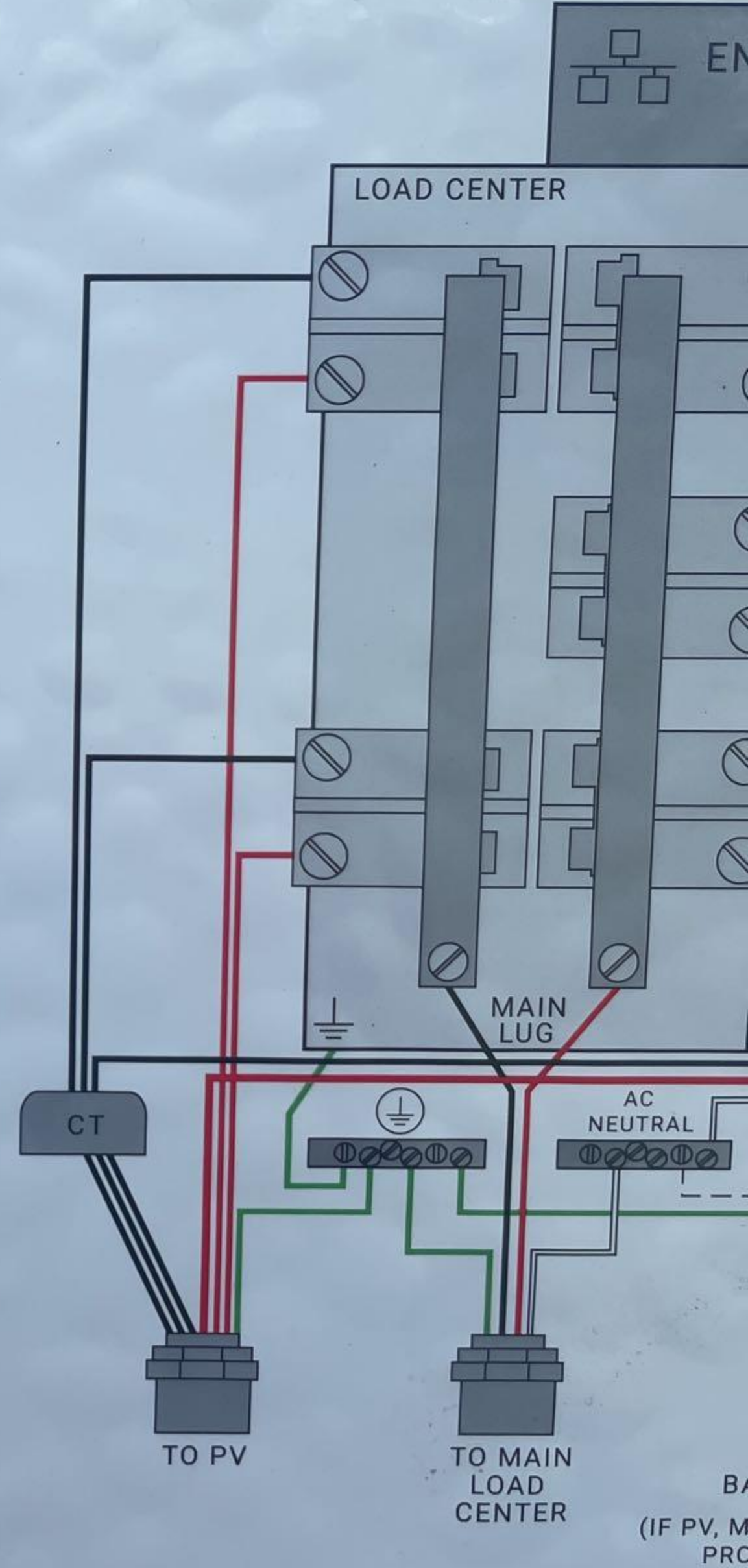
**DEDICATED SOLAR AND DG COMBINER BOX - DO NOT ADD LOADS
10 AMP ENVOY BREAKER NOT USED FOR BACKFEED**

CONNECTION	WIRE SIZES	TORQUE
DG BREAKER	14-10 AWG	2.2 Nm (20 lb-in)
	8 AWG	2.8 Nm (25 lb-in)
	6-4 AWG	3.0 Nm (27 lb-in)
60A CIRCUIT BREAKER ONLY	4-1/0 AWG	5.0 Nm (45 lb-in)
NEUTRAL AND GROUND		
LARGE SCREW	14-1/0 AWG	5.0 Nm (45 lb-in)
	6-14 AWG	2.2 Nm (20 lb-in)
SMALL SCREW	10-4 AWG	5.0 Nm (45 lb-in)
	3-2/0 AWG	5.6 Nm (50 lb-in)

COPPER CONDUCTORS ONLY, RATED MIN. 75 °C.
FOLLOW NFPA 70 (NEC), OR CSA C22.1 PART 1, AND ALL LOCAL CODES.

FOR DG BREAKERS LARGER THAN 20A, USE WIRE INSULATED FOR 90 °C BASED ON 75 °C AMPACITIES.

Designed in
California and New Zealand
Made in China





ENPHASE[®]

IQ COMBINER 3 ES



SAFETY US CA
SECURITÉ US CA
E341166

PHOTOVOLTAIC COMBINER BOX X-IQ-AM1-240-3-ES

ELECTRICAL RATINGS:

VOLTAGE: 240VAC, 60Hz

DG BREAKERS: 80A MAX (COMBINED)

DG INPUTS: 64A MAX (COMBINED)

OUTPUT: 65A MAX, 90A MAX FEEDER OCPD

TEMPERATURE: 46°C MAX AMBIENT

USE ONLY EATON BR SERIES BREAKERS (60A MAX)

S/N:



122102036235

P/N:



880-00820 05

**DEDICATED SOLAR AND DG COMBINER BOX - DO NOT ADD LOADS
10 AMP ENVOY BREAKER NOT USED FOR BACKFEED**

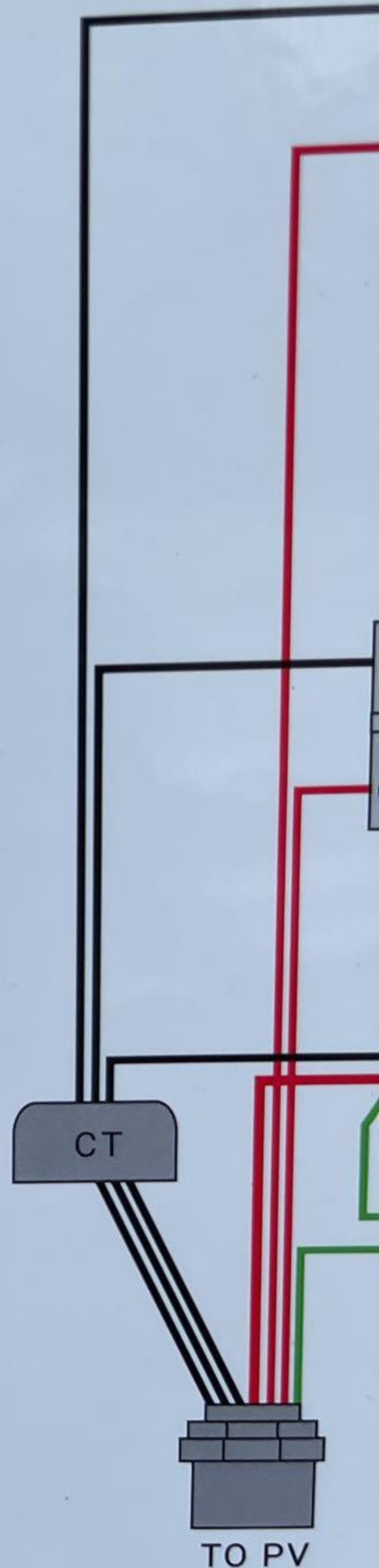
CONNECTION	WIRE SIZES	TORQUE
DG BREAKER	14-10 AWG	2.2 Nm (20 lb-in)
	8 AWG	2.8 Nm (25 lb-in)
	6-4 AWG	3.0 Nm (27 lb-in)
60A CIRCUIT BREAKER ONLY	4-1/0 AWG	5.0 Nm (45 lb-in)
NEUTRAL AND GROUND		
LARGE SCREW	14-1/0 AWG	5.0 Nm (45 lb-in)
	6-14 AWG	2.2 Nm (20 lb-in)
SMALL SCREW	14-1/0 AWG	5.0 Nm (45 lb-in)
	6-14 AWG	2.2 Nm (20 lb-in)
MAIN LUG	10-4 AWG	5.0 Nm (45 lb-in)
	3-2/0 AWG	5.6 Nm (50 lb-in)

COPPER CONDUCTORS ONLY, RATED MIN. 75 °C.

FOLLOW NFPA 70 (NEC), OR CSA C22.1 PART 1, AND ALL LOCAL CODES.

FOR DG BREAKERS LARGER THAN 20A, USE WIRE INSULATED FOR 90 °C BASED ON 75 °C AMPACITIES.

Designed in
California and New Zealand
Made in China







METER TAMPERING
UP TO \$500 FINE,
2 YEARS IN PRISON.
NO LAWYER FEE.

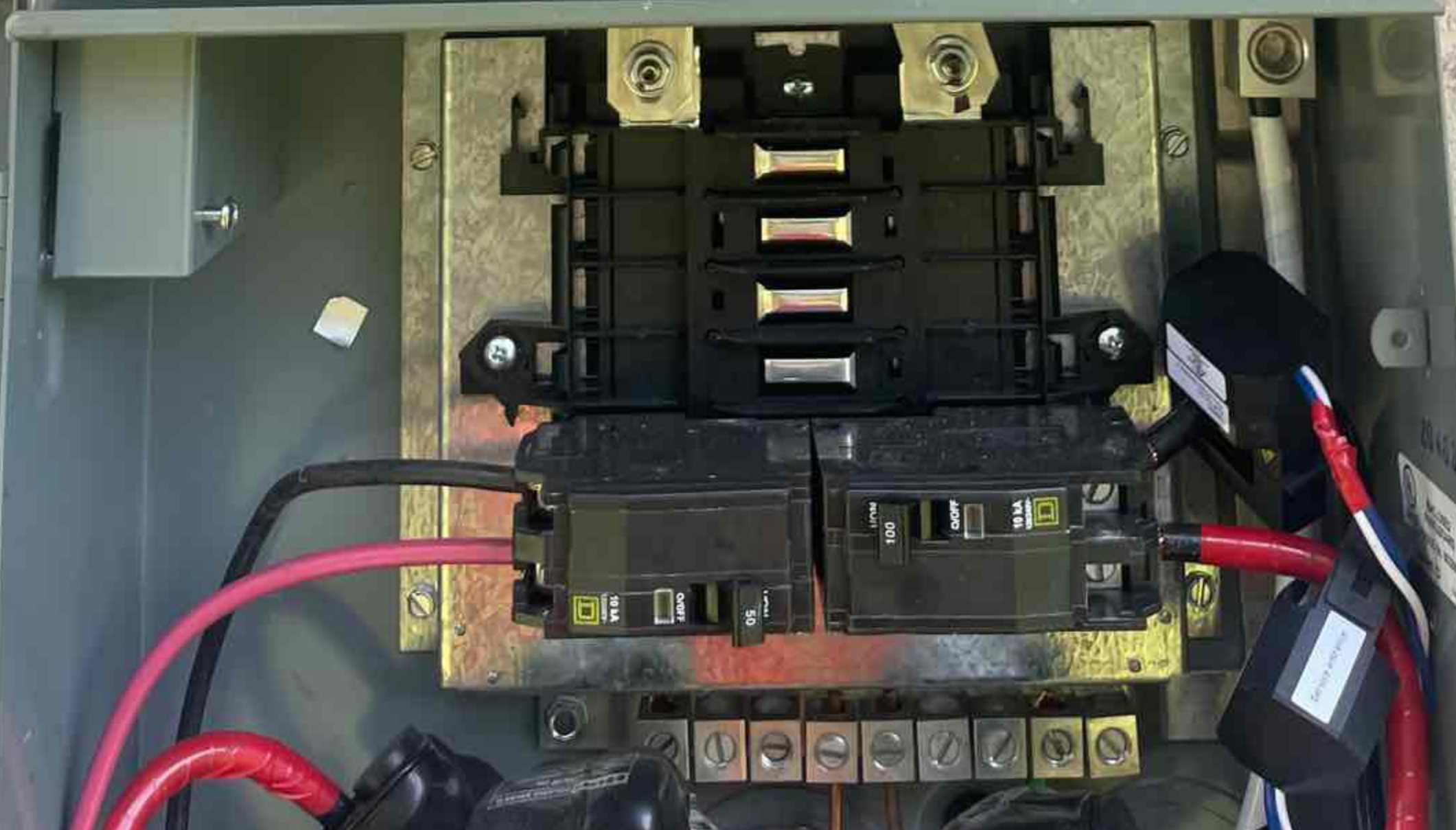
17034452
Y72077-321E
FOCUS kWh
FORM 25 CL 200 240V 2W 50 Hz TA+301 N 7.2
SOUTH RIVER EMC
TWACS 17034452
98 173 633
Landis+Gyr

CONECTOR PRINCIPAL
PARA ACOMETIDA
POR EL CUENTE

DOSE POLICE TIPO DO O DOA (10 - 100 N) SE COLOCA EN DOS ESPACIOS.
DOSE POLICE TIPO QIC (150 - 200) SE COLOCA EN CUATRO ESPACIOS Y SOLAMENTE EN LADO DERECHO.
NO INSTALE MAS DE 4 CIRCUITOS DE INTERRUPTORES.
USE SOLO INTERRUPTORES DERIVADOS DE 10, 15A Y 20A.
NO USE INTERRUPTORES DE PROTECCION SQUARE O EN DOS ORDENAR NO CAT. 00217558.
PARA INTERRUPTORES DE PROTECCION SQUARE O EN DOS ORDENAR NO CAT. 00217558.
SI ESTA EN LA POSICION MEDIO O EN LA POSICION OFF, PUEDE VERSE EL INTERRUPTOR HA SIDO DESARMADO.

TRIPPEO OFF

SIEMPRE VERIFICAR QUE EL INTERRUPTOR SE HAYA DESARMADO ANTES DE LOS TRABAJOS DE MANTENIMIENTO EN LOS CABLES DE FASES.





EATON®

General Duty Safety Switch
Interrupteur de sécurité à usage général
Interruptor de seguridad de servicio general

60 A, 240 V~, 60 Hz

Complete ratings inside
Valeurs nominales complètes à l'intérieur
Información completa de capacidades en el interior

Further instructions inside
Autres instructions à l'intérieur
Instrucciones adicionales en el interior

Made in U.S.A. / Fabriqué aux É.-U. / Hecho en E.U.A.

⚠ DANGER
HAZARDOUS VOLTAGE. WILL CAUSE SEVERE INJURY OR DEATH.
• Never operate switch with cover open.
• Turn OVP meter ahead of switch before doing any work inside. Replace all parts. Close cover before leaving cover open.
TENSION DANGEREUSE. PEUT CAUSER DES BLESSURES GRAVES OU LA MORT.
• Ne jamais transporter l'interrupteur lorsque le couvercle est ouvert.
• Coupez l'alimentation en amont de l'interrupteur avant de travailler à l'intérieur. Remplacez les pièces. Fermez le couvercle avant de quitter le site.
⚠ PELIGRO
VOLTAGE PELIGROSO. PUEDE CAUSAR HERIDAS SEVERAS O LA MUERTE.
• Nunca opere el interruptor con la cubierta abierta.
• Desconecte la alimentación del interruptor antes de trabajar dentro del mismo. Reemplazice todas las partes. Cierre la cubierta antes de abandonar el interruptor.

30-4380



PHOTOVOLTAIC AC DISCONNECT

MAXIMUM AC OPERATING CURRENT:

NOMINAL OPERATING AC VOLTAGE:

596-03942

⚠ WARNING

ELECTRICAL SHOCK HAZARD
IF A GROUND FAULT IS INDICATED
NORMALLY GROUNDED CONDUCTORS
MAY BE UNGROUNDED AND ENERGIZED

596-03942

⚠ WARNING

THIS EQUIPMENT FED BY
MULTIPLE SOURCES:
TOTAL RATING OF ALL OVERCURRENT
DEVICES EXCLUDING MAIN POWER
SUPPLY SHALL NOT EXCEED
AMPACITY OF BUSBAR

596-03942

⚠ WARNING

DUAL POWER SUPPLY

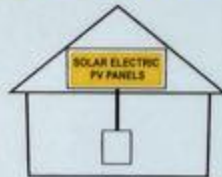
SOURCES: UTILITY GRID
AND PV SOLAR
ELECTRIC SYSTEM

596-03942

SOLAR PV SYSTEM EQUIPPED WITH RAPID SHUTDOWN

TURN RAPID SHUTDOWN
SWITCH TO THE
"OFF" POSITION TO
SHUT DOWN PV SYSTEM
AND REDUCE
SHOCK HAZARD
IN THE ARRAY

596-03942



ON
|

OFF
○



 ENPHASE

CAUTION: SOLAR CIRCUIT

⚠ WARNING
POWER SOURCE OUTPUT CONNECTION.
DO NOT RELOCATE THIS OVERCURRENT DEVICE.

⚠ CAUTION
PHOTOVOLTAIC SYSTEM CIRCUIT IS BACKFED

⚠ WARNING
DUAL POWER SUPPLY
SOURCES: UTILITY GRID
AND PV SOLAR
ELECTRIC SYSTEM

196-03942

196-03942

196-03942

596-03942 **⚠ WARNING**
POWER SOURCE OUTPUT CONNECTION.
DO NOT RELOCATE THIS OVERCURRENT DEVICE.

596-03942 **⚠ CAUTION**
PHOTOVOLTAIC SYSTEM CIRCUIT IS BACKFED

⚠ WARNING
DUAL POWER SUPPLY
SOURCES: UTILITY GRID
AND PV SOLAR
ELECTRIC SYSTEM
596-03942

CAUTION: SOLAR CIRCUIT

596-03942

EATON

General Duty Safety Switch
Interrupteur de sécurité à usage général
Interruptor de seguridad de servicio general

60 A, 240 V~, 60 Hz

Complete ratings inside
Valeurs nominales complètes à l'intérieur
Información completa de capacidades en el interior

Further instructions inside
Autres instructions à l'intérieur
Instrucciones adicionales en el interior

Made in U.S.A. / Fabriqué aux É.-U. / Hecho en E.U.A.

⚠ DANGER
HAZARDOUS VOLTAGE WILL CAUSE SEVERE INJURY OR DEATH.
• Never operate switch with cover open.
• Turn OFF power ahead of switch before doing any work inside. Postpone all work. Close cover before leaving panel ON.

⚠ TENSION DANGEREUSE. PEUT CAUSER DES BLESSURES GRAVES OU LA MORT.
• Ne jamais ouvrir l'interrupteur lorsque le couvercle est ouvert.
• Coupez l'alimentation en amont de l'interrupteur avant toute intervention. Reportez les travaux. Fermez le couvercle avant de quitter le panneau.

⚠ PELIGRO
VOLTAJE PELIGROSO. PUEDE CAUSAR HERIDAS SEVERAS O LA MUERTE.
• Nunca opere el interruptor con la cubierta abierta.
• Desconecte la alimentación del interruptor antes de cualquier trabajo. Postergue todos los trabajos. Cierre la cubierta antes de abandonar el interruptor.

30-4308

PHOTOVOLTAIC AC DISCONNECT

MAXIMUM AC OPERATING CURRENT: _____

NOMINAL OPERATING AC VOLTAGE: _____
596-03942

⚠ WARNING

ELECTRICAL SHOCK HAZARD

IF A GROUND FAULT IS INDICATED
NORMALLY GROUNDED CONDUCTORS
MAY BE UNGROUNDED AND ENERGIZED

596-03942

⚠ WARNING

THIS EQUIPMENT FED BY
MULTIPLE SOURCES:
TOTAL RATING OF ALL OVERCURRENT
DEVICES EXCLUDING MAIN POWER
SUPPLY SHALL NOT EXCEED
AMPACITY OF BUSBAR

596-03942



⚠ WARNING

DUAL POWER SUPPLY

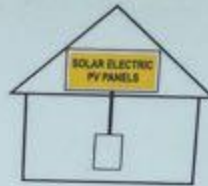
SOURCES: UTILITY GRID
AND PV SOLAR
ELECTRIC SYSTEM

596-03942

**SOLAR PV SYSTEM EQUIPPED
WITH RAPID SHUTDOWN**

TURN RAPID SHUTDOWN
SWITCH TO THE
"OFF" POSITION TO
SHUT DOWN PV SYSTEM
AND REDUCE
SHOCK HAZARD
IN THE ARRAY

596-03942



DC JUNCTION BOX

CAUTION: SOLAR CIRCUIT