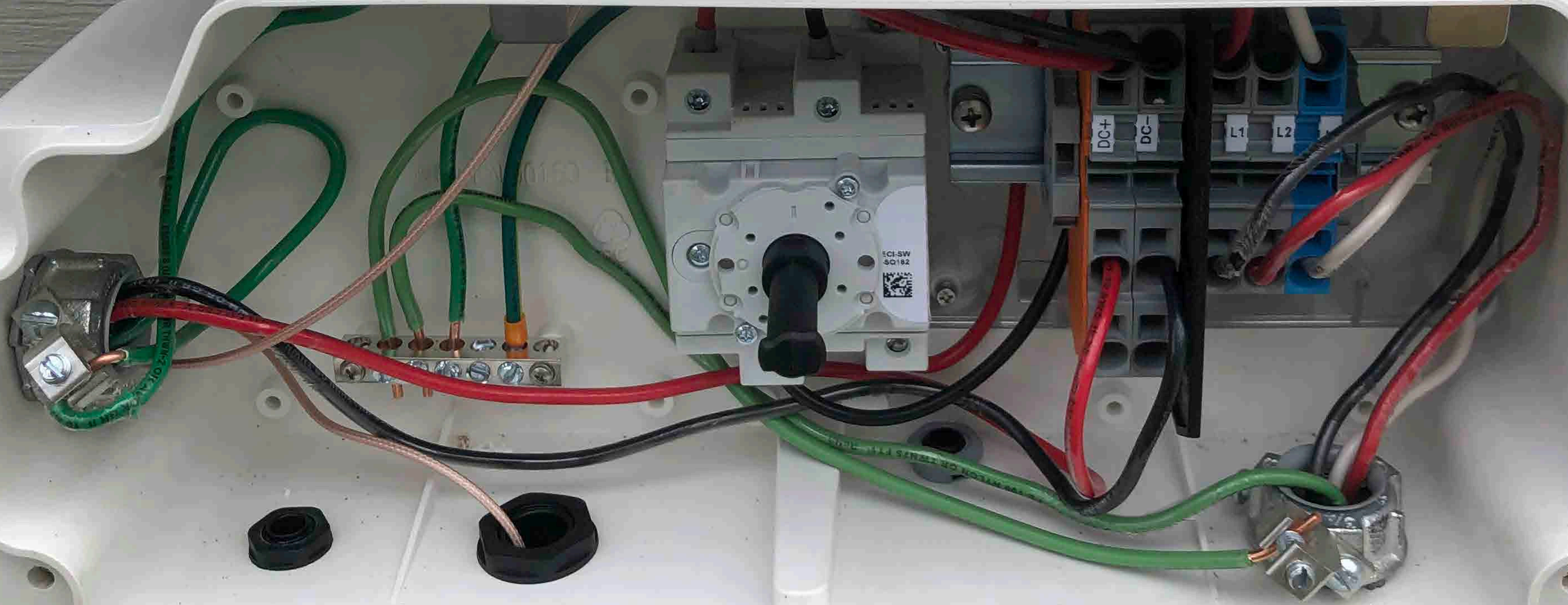


solar**edge**

 HD wave

68191006  
3/4" COVER  
UL



This switch is suitable for use on a circuit with a maximum voltage of 240 Vac maximum when protected by a circuit breaker or class H or class K fuses rated 30 A maximum or (B) 100 000 rms symmetrical A, 240 Vac maximum when protected by class J or class R fuses rated 30 A maximum.

protegido por un interruptor automático nominal como máximo, o (B) 100 000 A simétrico máximo cuando está protegido por fusibles clase J o R de 30 A máximo.

Oil mechanism bearing surfaces (not current carrying parts) annually.

Engrase las superficies de los cojinetes del mecanismo (no las piezas conductoras de corriente) una vez al año.

When equipment ground-service ground lugs are required, order catalog no. PK3GTA1.

Cuando es necesario utilizar zapatas de puesta a tierra del equipo o de acometida, solicite las piezas de catálogo PK3GTA1.

Suitable for use as service equipment.

Adecuado para usarse como equipo de acometida.

Closing cap included - Order hubs separately per hub chart below.

Conduit	3/4"	1"	1 1/4"	1 1/2"	2"	2 1/2"
Hub No.	B-075	B-100	B-125	B-150	B-200	B-250

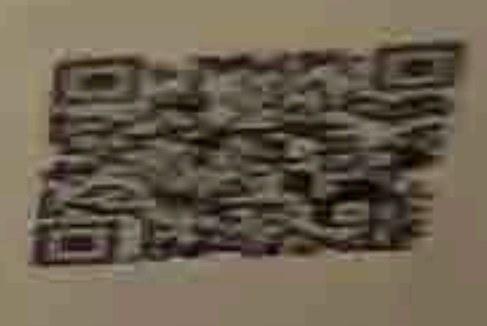
Casquillo de cierre incluido - Solicite los receptáculos por separado según el cuadro de receptáculos que aparece más abajo.

Tubo Conduit	3/4"	1"	1 1/4"	1 1/2"	2"	2 1/2"
Capuchon No.	B-075	B-100	B-125	B-150	B-200	B-250

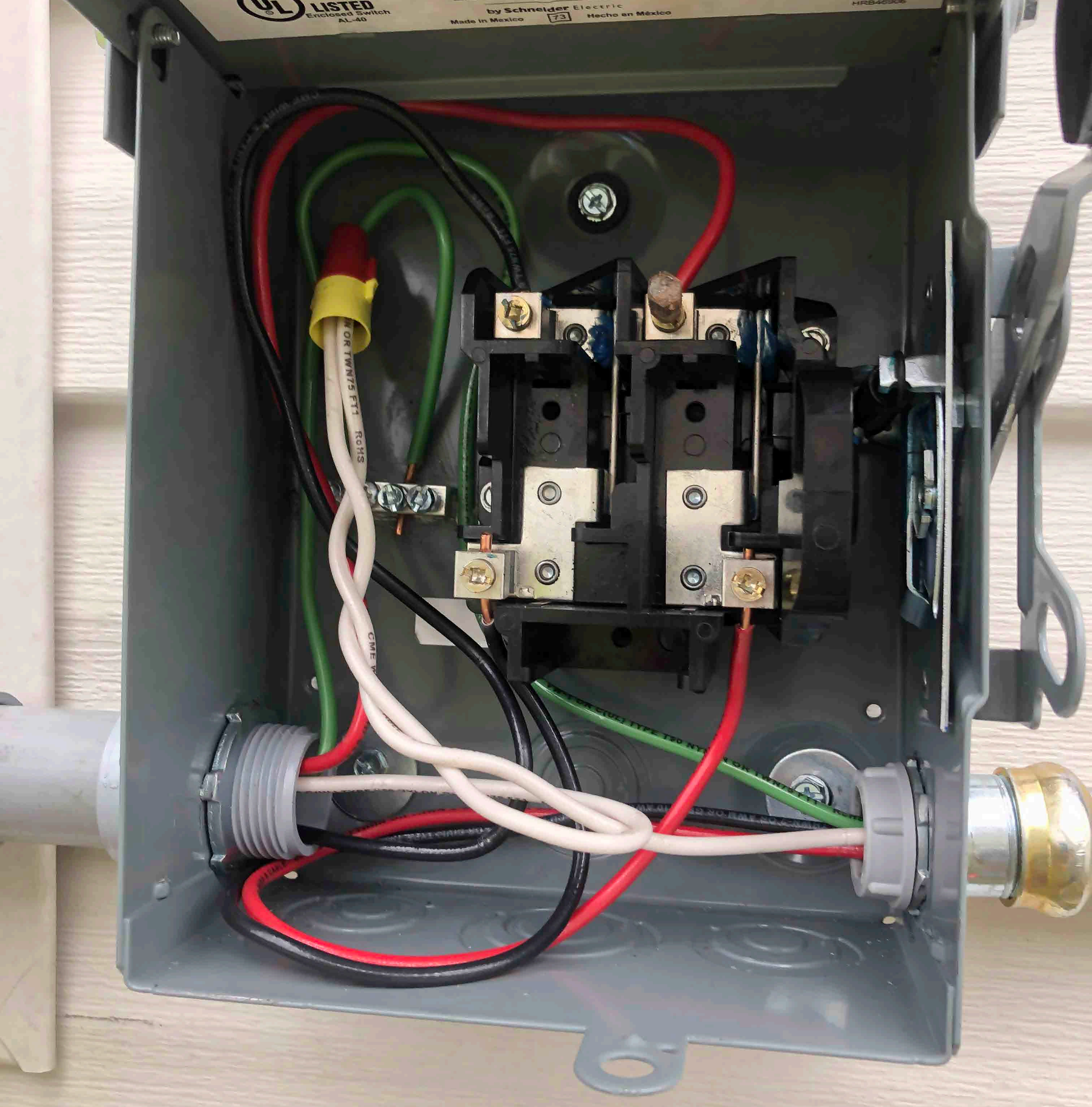
Inspected by: / Inspeccionado por:



by Schneider Electric  
Made in Mexico 73 Hecho en México



HRB46906







WARNING: PHOTOVOLTAIC  
POWER SOURCE





WARNING: PHOTOVOLTAIC  
POWER SOURCE



902120491444800176

ENGINEERED, DESIGNED AND QUALITY TESTED BY Q CELLS IN GERMANY

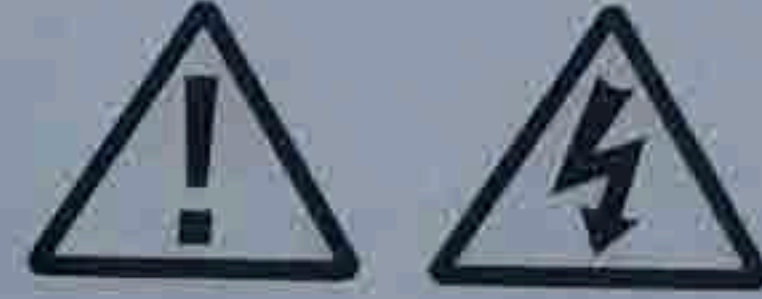
### Q.PEAK DUO BLK-G6+ / TS 340

# Q CELLS

#### PERFORMANCE AT STANDARD TEST CONDITIONS\*

Nominal Power* (+5W / -0W)	P <sub>MPP</sub>	[W]	340
Short circuit current*	I <sub>SC</sub>	[A]	10.52
Open circuit voltage*	V <sub>OC</sub>	[V]	40.66
Current at maximum power	I <sub>MPP</sub>	[A]	10.02
Voltage at maximum power	V <sub>MPP</sub>	[V]	33.94
Maximum system voltage	V <sub>SYS</sub>	[V]	1000 (IEC) 1000 (UL)
Weight	M	[kg / lbs]	21.5 / 47.4

Made in Korea



**DANGER!**  
**Risk of electric shock!**  
 DO NOT connect or disconnect plug contacts while system is under load current. Refer to the Installation and Operation Manual before installing, operating or servicing this unit.

\*Measurement tolerances: P<sub>MPP</sub> ± 3%; I<sub>SC</sub>, V<sub>OC</sub> ± 5% at STC: 1000 W/m<sup>2</sup>, 25 ± 2 °C, AM 1.5 according to IEC 60904-3. Data given are rated (nominal) values.



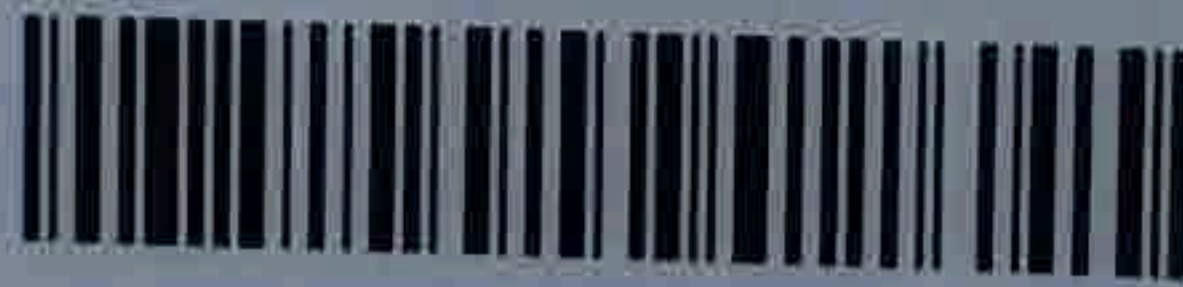
**DANGER!**  
**Risque de choc électrique!**  
 NE PAS connecter ou déconnecter les connecteurs lorsque le système est en charge. Consultez le manuel d'installation et d'utilisation avant installation, utilisation et entretien du produit.

**Fire Rating:** Class C / Type 2  
**Design load:** 50 lbs/ft<sup>2</sup>  
**Fuse Rating:** 20 A  
 For field connections, use minimum No.12 AWG copper wires insulated for a minimum of 90 °C

U.S. Patent No. 9,893,215 (solar cells)

**EMAIL** service@q-cells.com  
**WEB** www.q-cells.com

Serial No. 902120491444800176



Hanwha Solutions Corporation, 202. Sansusandan 2-ro, Iwol-myeon, Jincheon-gun, Chungcheongbuk-do, Republic of Korea, 27816  
 Q CELLS is a brand of Hanwha Solutions Corporation















