

































































Christine Forest
150 Amps
Amperage 400 #12501

150 Amps

Yellow label



Cable to be tested
1550 Terminal 11
Analog BSC 47704







www.woodwardclark.com
KPMG
© 2017 Woodward-Clyde



































BLUE RAVEN
SAFETY

Job Hazard Analysis

CUSTOMER NAME:

Christian Garrett

INSTALLATION DATE:

ADDRESS:

150 Topsail Dr. Angier, NC 27501

HAZARD CATEGORY	POTENTIAL HAZARDS	HAZARD CONTROLS
Ladder Safety	<ul style="list-style-type: none"> • Dependent • Defect/Failure • Electrocuton 	ladder 3ft+ above eave and horns
Fall Protection	<ul style="list-style-type: none"> • Fall from 4' or greater 	proper anchors and harness of ropes
Electrical Safety	<ul style="list-style-type: none"> • Electrocuton • AEC Flash 	wear PPE
Heat & Related Issues	<ul style="list-style-type: none"> • High Heat - 85° to 89° • Extreme Heat - 100° or higher 	Take break when need to and stay hydrated.
Public Protection	<ul style="list-style-type: none"> • Falling object • Slip/Trip/Fall 	Caution tape around site and cones
NEAREST HOSPITAL:	Central Harnett Hospital 215 Brightwater Dr Lillington, NC 27546	
SAFETY CONTACT:	Zak Anderson: 916-792-4253	
Additional Notes		
Falling Objects Falls Slips Trips		
Crew Members		
	Name	Signature
1	Devin B	
2	Donald	
3	Jonathan	
4		
5		
6		

Eli Williams

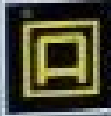
Crew Lead (print)

Eli Williams

Crew Lead (signature)

SWITCH FOR SOLAR PV SYSTEM

SAFETY
CORONA, RUTY
SAFETY SWITCH
INSTALLATION OR
REPAIR MUST BE
PERFORMED BY
A QUALIFIED
ELECTRICIAN



⚠ DANGER / PELIGRO
ELECTRIC SHOCK HAZARD
TERMINALS ON THE LINE AND
LOW VOLTAGE MAY BE ENERGIZED
IN THE OPEN POSITION

**PHOTOVOLTAIC SYSTEM
AC DISCONNECT**

RATED AC OUTPUT CURRENT 31 A
NOMINAL OPERATING VOLTAGE 480 V

⚠ WARNING
FOR USE WITH SOLAR PV SYSTEMS
ONLY. NOT FOR USE WITH OTHER
UTILITY DISCONNECTS. 1507330

⚠ WARNING
ELECTRIC SHOCK HAZARD
TERMINALS ON THE LINE AND
LOW VOLTAGE MAY BE ENERGIZED
IN THE OPEN POSITION

 ENPHASE.

⚠ WARNING
ELECTRIC SHOCK HAZARD
TERMINALS ON THE LIVE AND
LOAD SIDES MAY BE ENERGIZED
IN THE OPEN POSITION

PHOTOVOLTAIC SYSTEM
⚠ AC DISCONNECT ⚠
SERIAL NUMBER: 1111111111
SERIAL NUMBER: 1111111111

⚠ WARNING
THIS EQUIPMENT IS NOT A
SOURCE. TOTAL RATING OF ALL
OVERCURRENT DEVICES, INCLUDING
THIS SUPPLY OVERCURRENT
DEVICE, IS LIMITED TO THE
CAPACITY OF BUSBAR

⚠ WARNING
HARDWARE SHALL BE AS PER REQUIREMENTS
FOR PHOTOVOLTAIC SYSTEMS
AS SPECIFIED IN THE ENPHASE
INSTALLATION MANUAL

⚠ WARNING
PHOTOVOLTAIC SYSTEM
CONSUMER PANEL
DO NOT ADD LOADS



WARNING: HIGH VOLTAGE
POWER SOURCE

WARNING: HIGH VOLTAGE
POWER SOURCE

WARNING

ELECTRIC SHOCK HAZARD
DO NOT OPEN THE DOOR
UNLESS YOU ARE A
QUALIFIED ELECTRICIAN

WARNING

PHOTOVOLTAIC SYSTEMS
CAN BECOME LIVE
ELECTRIC CIRCUITS
IF NOT PROPERLY
INSTALLED

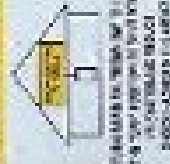
WARNING

DO NOT DISCONNECT
OR RECONNECT THE
SOLAR SYSTEM
WHILE THE SYSTEM IS
OPERATING

WARNING

DO NOT TOUCH
INTERNAL COMPONENTS
WHILE THE SYSTEM IS
OPERATING

**SOLAR PV SYSTEM
EQUIPPED WITH
RAMP SHUTDOWNS**













LAN POWER (RJ45)

120

140

150

160

170

180

190

200

210

220

230

240

250

260

270

280

290

300

310

320

330

340

350

360

370

380

390

400

410

420

430

440

450

460

470

480

490

500

510

520

530

540

550

560

570

580

590

600

610

620

630

640

650

660

670

680

690

700

710

720

730

740

750

760

770

780

790

800

810

820

830

840

850

860

870

880

890

900

910

920

930

940

950

960

970

980

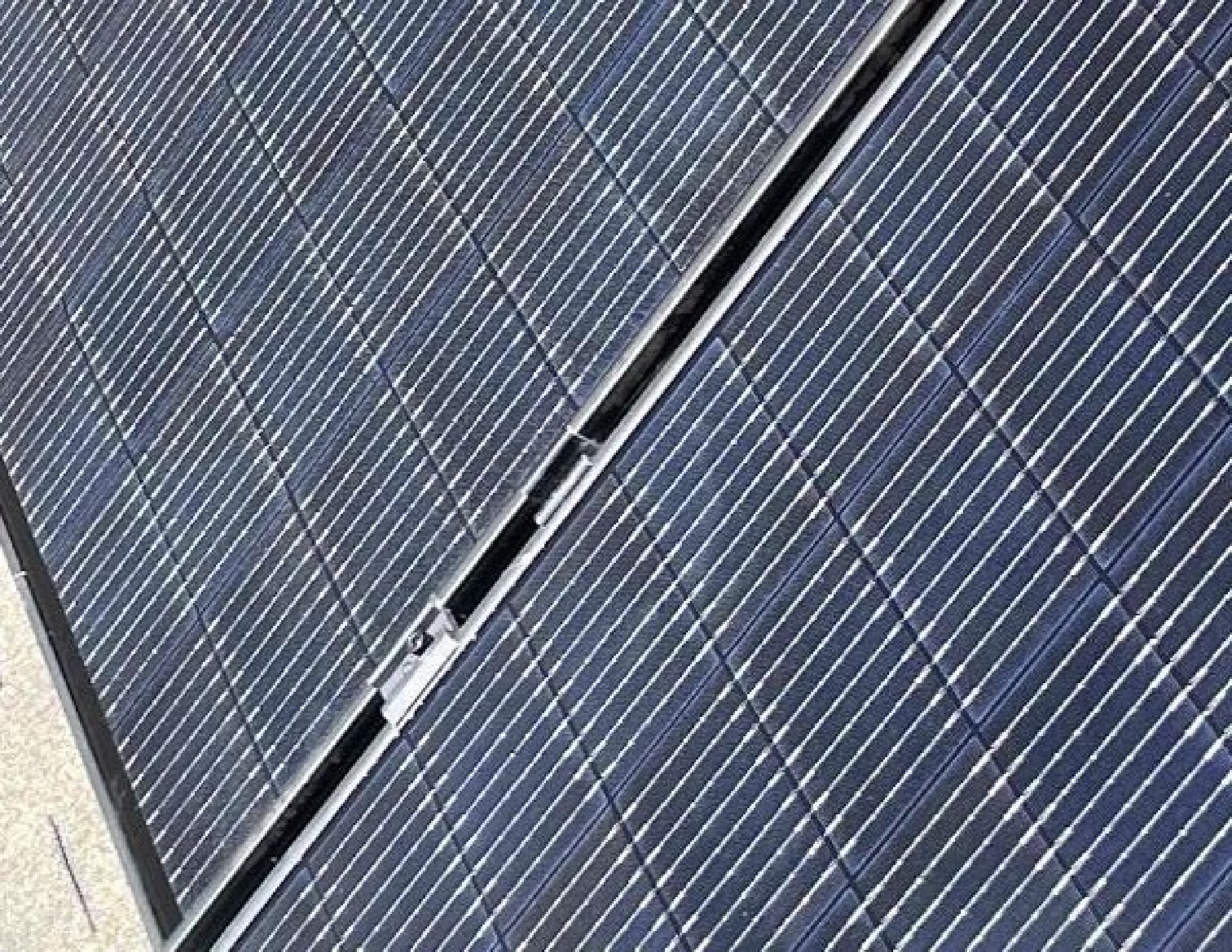
990

1000













White label on the gutter with illegible text and a QR code.















INSTALLATION INFORMATION
FOR PROPER PERFORMANCE PANELS MUST BE INSTALLED IN ACCORDANCE WITH AIA RECOMMENDATIONS
APA PRODUCT SUPPORT
253-620-7400
SPACE BANE

OSB SHEATHING
1/2" THICK
36" X 48" PANELS
SHEATHING
253-620-7400
SHEATHING
1/2" THICK
36" X 48" PANELS
SHEATHING
253-620-7400

OSB SHEATHING
1/2" THICK
36" X 48" PANELS
SHEATHING
253-620-7400

ULTRACOR
1-800-525-4262
LUMBER

03-03-08 SHEET 1 OF 10















253-0

SPACE

1/8 INCH

1/8 INCH

THIS SIDE

ESTÉ LAD

DE COTE E

STRENGTH

TYPE D

ACCORDANCE WITH
APA RECOMMENDATIONS
APA PRODUCT SUPPORT
253-620-7410
SPACE PANELS
1/8 INCH GAPS
1/8 INCH EDGES
THIS SIDE DOWN
FASTENERS
APA
MADE IN USA

PHOTOVOLTAIC
SOURCE

PHOTOVOLTAIC
SOURCE







WARNING:
POWER

INSTALLATION
FOR ALL TYPES OF
WIRING AND
CABLES
CALL US TODAY
800-820-7400
FOR MORE INFORMATION
VISIT OUR WEBSITE
WWW.ELECTRICAL-CONDUIT.COM



ENPHASE

WARNING
This device is not to be used for any purpose other than that intended by the manufacturer. See the user manual for more information.

WARNING
Do not touch the device when it is powered on. The device can become very hot and may cause burns or other injuries.

WARNING
Do not use the device in wet or damp areas. The device is not waterproof and may be damaged by moisture.

WARNING
Do not use the device near flammable materials. The device can generate heat and may cause a fire.

WARNING
Do not use the device near children or pets. The device is not a toy and may be damaged if used inappropriately.



SIENPHASE

DANGER
ELECTRIC SHOCK HAZARD
DO NOT TOUCH

WARNING
DO NOT TOUCH
ELECTRIC SHOCK HAZARD

WARNING
ELECTRIC SHOCK HAZARD
DO NOT TOUCH





Christian Grest
150 Topsail
Angier NC
6/21/21
EW

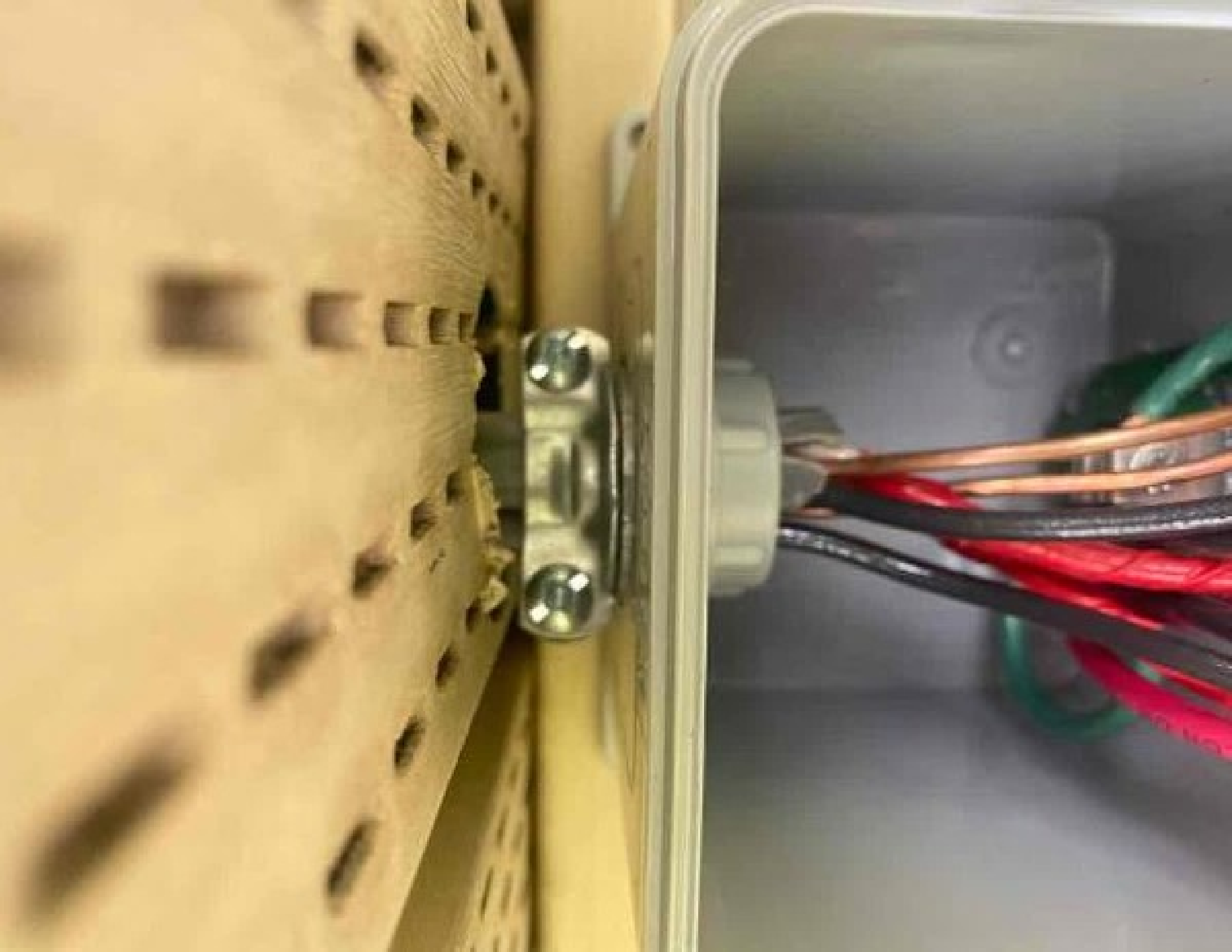


Christian Grest
150 Topsail
Angier NC
6/26/21
EW



Christian Grest
150 Topsail
Angier NC
6/26/21
EW







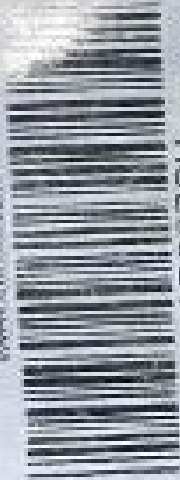
WARNING - HIGH VOLTAGE
DO NOT TOUCH





 UNIRAC

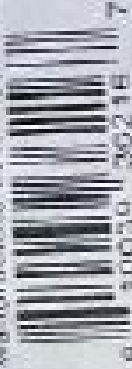
WWW.UNIRAC.COM



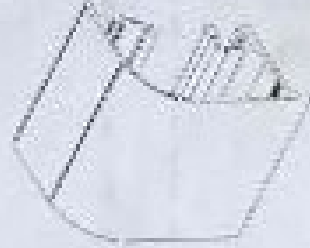
256072U

SFM TRIMBALL 2' UNIV 3RK
Pack Size - 4

WG/PC# 0042962-00
Manufacture date: SFP-2020



6 10039 36218 7



California Proposition 65  WARNING: Cancer and
Reproductive Harm - www.P65Warnings.ca.gov

807210



122

840-00388-14
250VAC 20A
+79°C 2051



LEVEL HERE

↑
TOP

LEVEL HERE

LEVEL HERE

50018270-002



<http://yourhome.honeywell.com>
1-800-468-1502

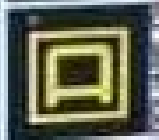


E AUX Y G O L R B C

C IS OPTIONAL
WITH BATTERIES



SWITCH FOR SOLAR PV SYSTEM



GENERAL DUTY SAFETY SWITCH
PROVISION FOR THE
INSTALLATION OF
A PHOTOVOLTAIC SYSTEM
BY THE USER
SEE INSTRUCTIONS FOR
INSTALLATION

**PHOTOVOLTAIC SYSTEM
AC DISCONNECT**

RATED AC OUTPUT CURRENT 30 A
NOMINAL OPERATING AC VOLTAGE 120 V

CAUTION: RISK OF FIRE
This switch is designed for use with a maximum continuous current of 30 A and a maximum continuous voltage of 120 V. Exceeding these ratings may result in fire or equipment damage. Do not use this switch for applications where the load is inductive or capacitive. Do not use this switch for applications where the load is subject to frequent starting and stopping. Do not use this switch for applications where the load is subject to high inrush currents. Do not use this switch for applications where the load is subject to high voltage transients. Do not use this switch for applications where the load is subject to high frequency currents. Do not use this switch for applications where the load is subject to high temperature. Do not use this switch for applications where the load is subject to high humidity. Do not use this switch for applications where the load is subject to high vibration. Do not use this switch for applications where the load is subject to high shock. Do not use this switch for applications where the load is subject to high pressure. Do not use this switch for applications where the load is subject to high radiation. Do not use this switch for applications where the load is subject to high magnetic fields. Do not use this switch for applications where the load is subject to high electric fields. Do not use this switch for applications where the load is subject to high electromagnetic interference. Do not use this switch for applications where the load is subject to high radio frequency interference. Do not use this switch for applications where the load is subject to high power density. Do not use this switch for applications where the load is subject to high energy density. Do not use this switch for applications where the load is subject to high temperature gradients. Do not use this switch for applications where the load is subject to high thermal shock. Do not use this switch for applications where the load is subject to high mechanical stress. Do not use this switch for applications where the load is subject to high mechanical shock. Do not use this switch for applications where the load is subject to high mechanical vibration. Do not use this switch for applications where the load is subject to high mechanical resonance. Do not use this switch for applications where the load is subject to high mechanical fatigue. Do not use this switch for applications where the load is subject to high mechanical wear. Do not use this switch for applications where the load is subject to high mechanical corrosion. Do not use this switch for applications where the load is subject to high mechanical erosion. Do not use this switch for applications where the load is subject to high mechanical abrasion. Do not use this switch for applications where the load is subject to high mechanical impact. Do not use this switch for applications where the load is subject to high mechanical deformation. Do not use this switch for applications where the load is subject to high mechanical distortion. Do not use this switch for applications where the load is subject to high mechanical buckling. Do not use this switch for applications where the load is subject to high mechanical instability. Do not use this switch for applications where the load is subject to high mechanical failure. Do not use this switch for applications where the load is subject to high mechanical damage. Do not use this switch for applications where the load is subject to high mechanical destruction. Do not use this switch for applications where the load is subject to high mechanical annihilation. Do not use this switch for applications where the load is subject to high mechanical obliteration. Do not use this switch for applications where the load is subject to high mechanical annihilation. Do not use this switch for applications where the load is subject to high mechanical obliteration.

WARNING
ELECTRIC SHOCK HAZARD
TERMINALS ON THE LINE AND
LEADS MAY BE ENERGIZED
IN THE OPEN POSITION

WARNING
ELECTRIC SHOCK HAZARD
TERMINALS ON THE LINE AND
LEADS MAY BE ENERGIZED
IN THE OPEN POSITION

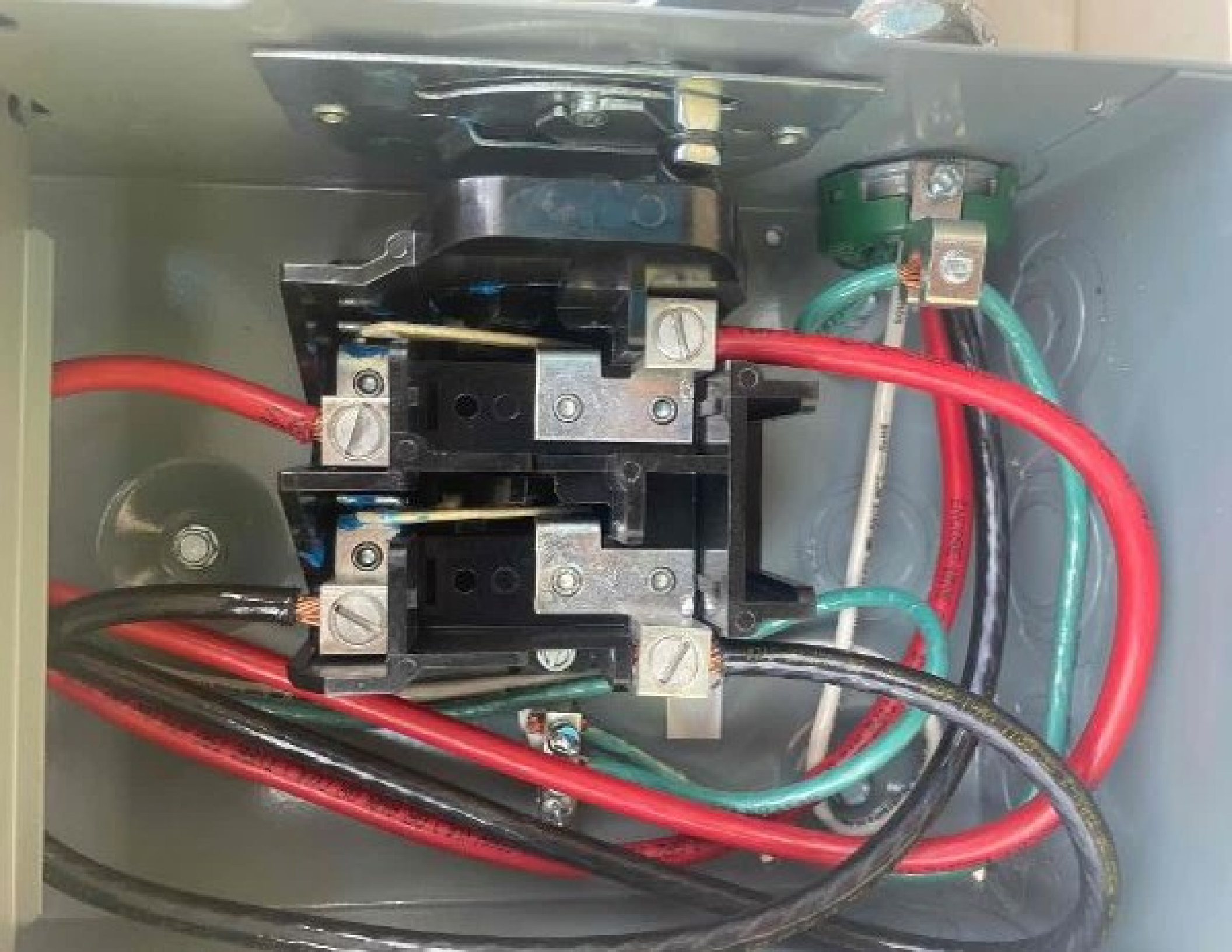




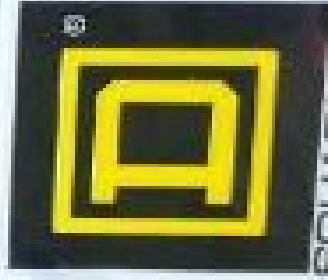








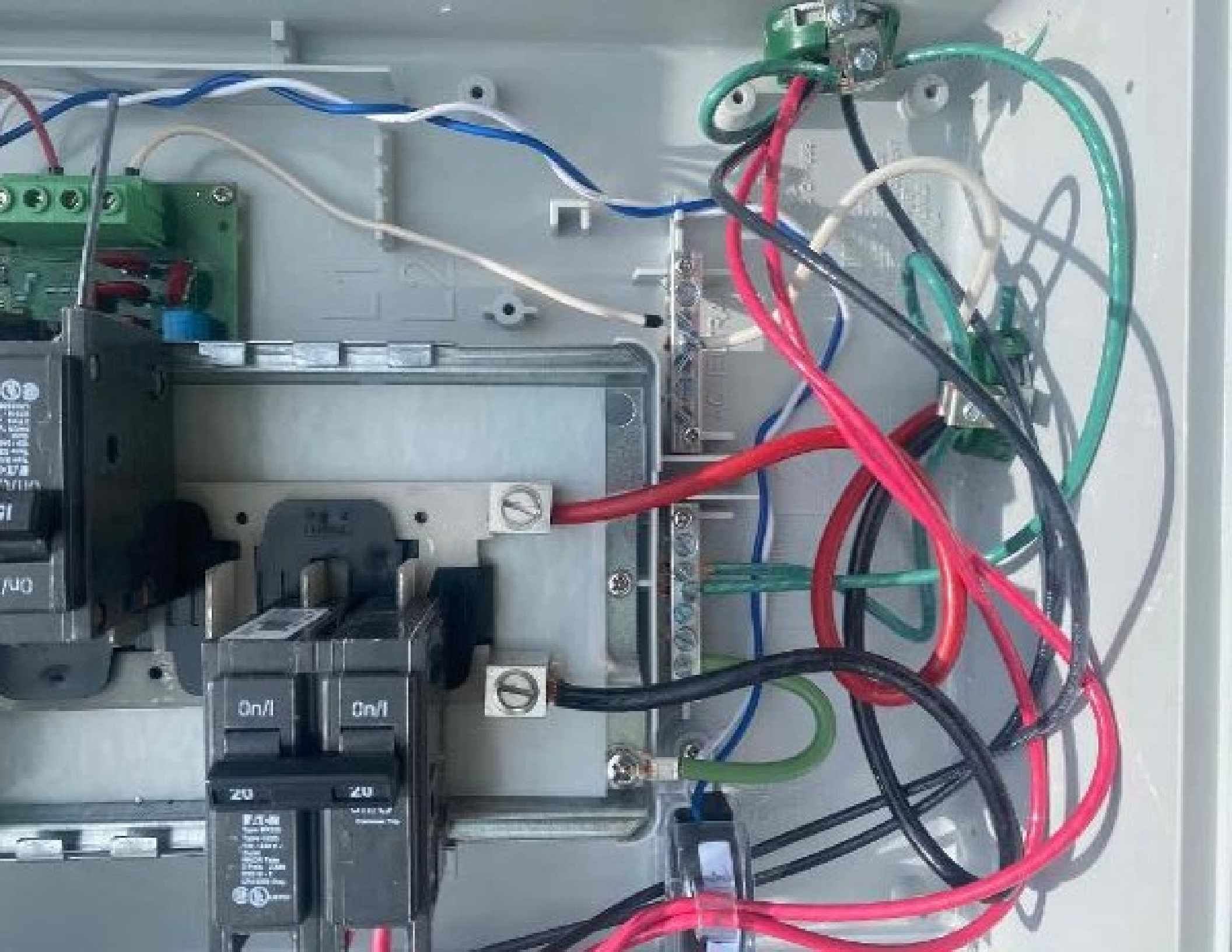


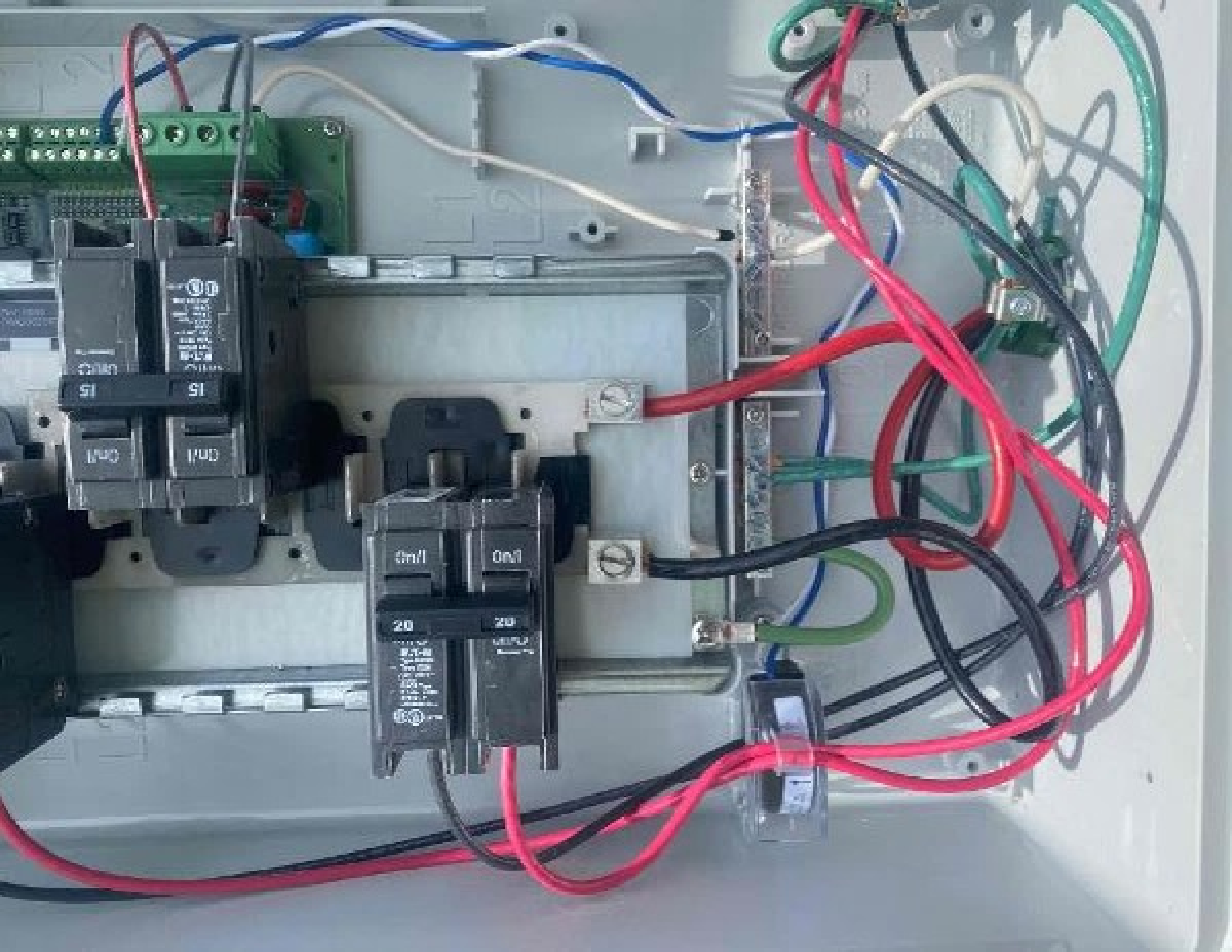


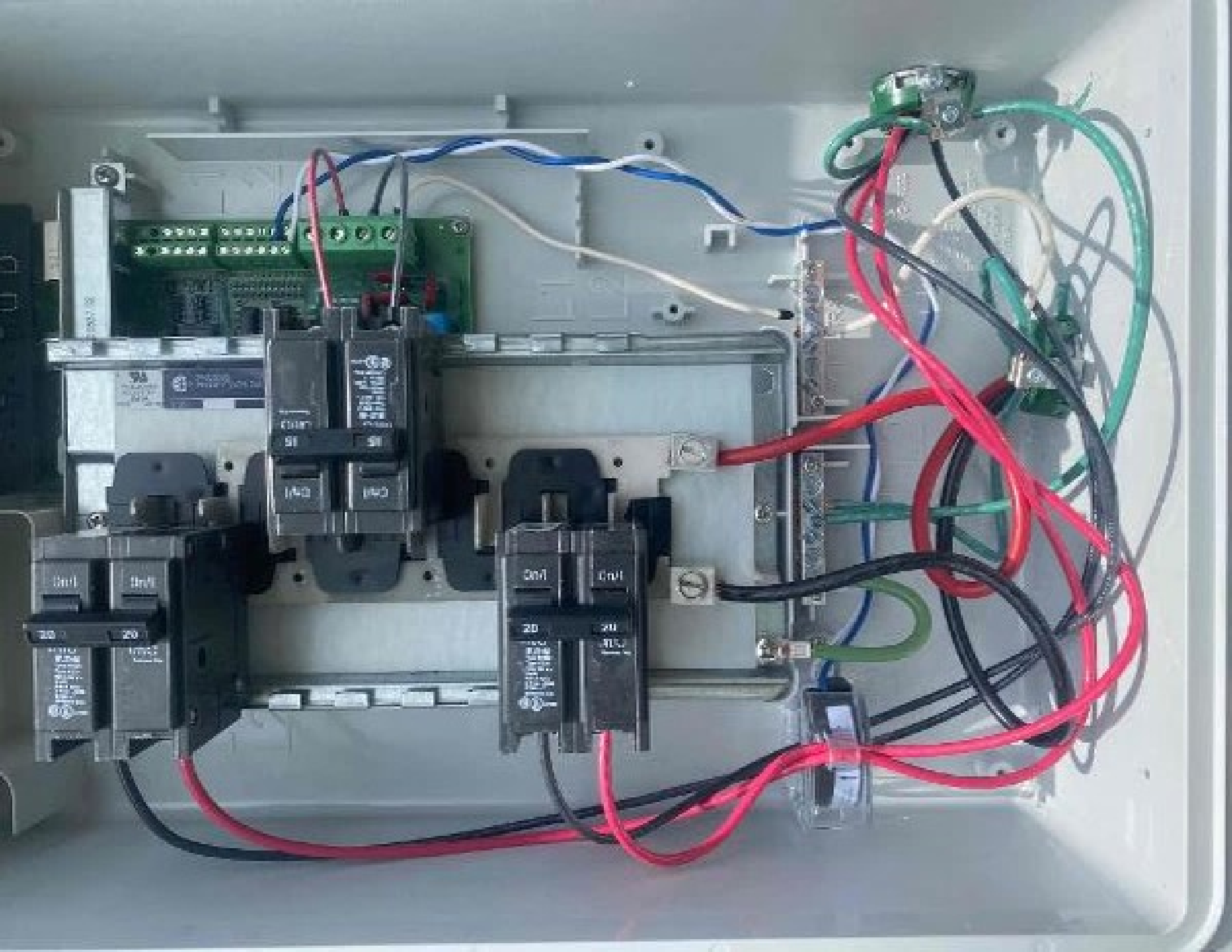
**GENERAL DUTY
SAFETY SWITCH
INTERRUPTOR DE
SEGURIDAD DE
SERVICIO GENERAL**
60 A



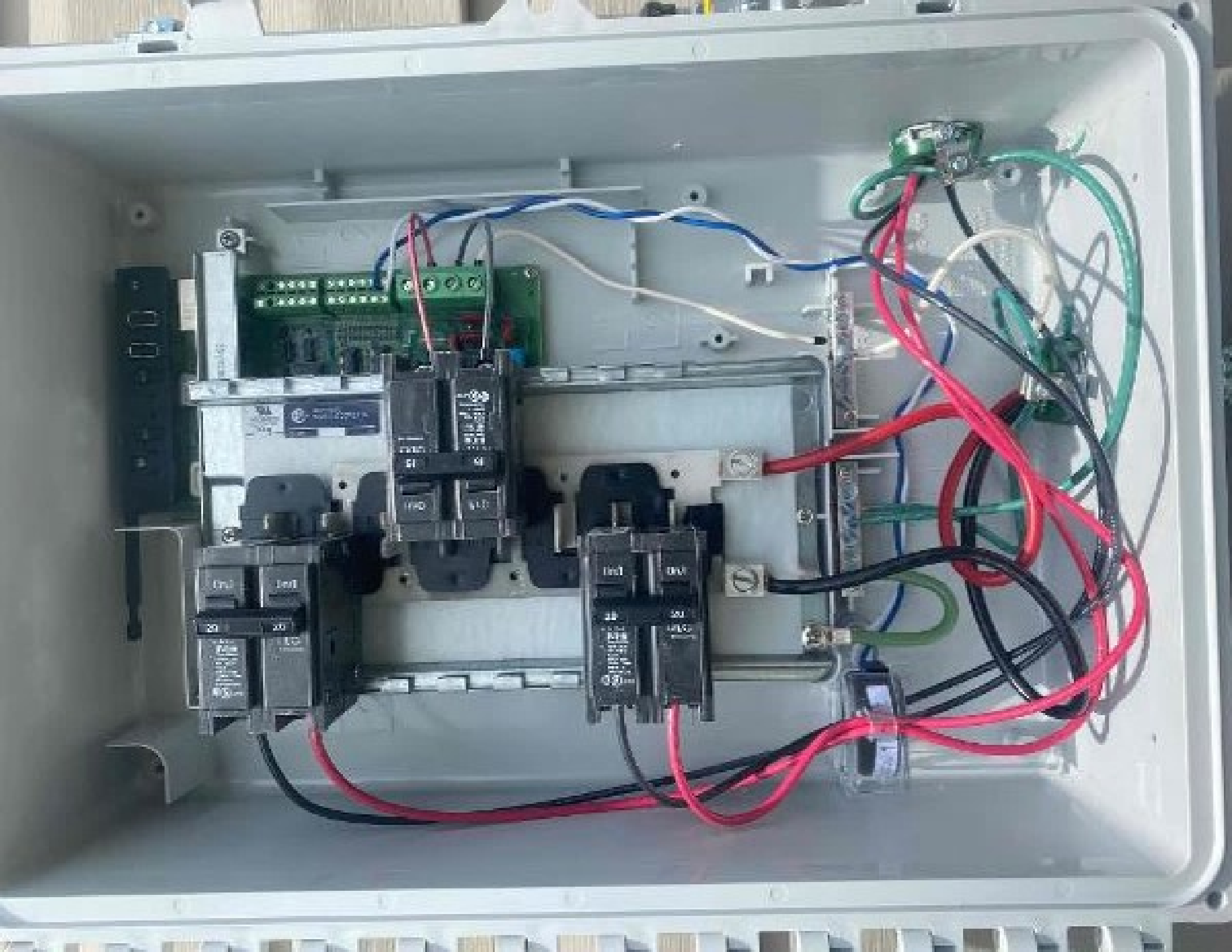












Christian Grest
150 Topsail
Angier NC
6/26/21
EW



Christian Grest
150 Topsail
Angier NC
6/26/21
EW





Christian Grest
150 Topsail
Angier NC
6/26/21
EW



















WARNING PHOTOGRAPHIC



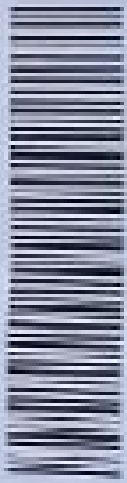


Capital Electric
A World of Service

CAPITAL ELECTRIC
10025 MURPHY CHURCH DRIVE
DUMMYS MC, 27523-8821
1-800-377-4480 Fax: 1-814-714

mailto:orders@capelrec.com
http://www.capelrec.com

SOLD TO:
BLUB RAVEN SOLAR
C/O CONROTH KEY ACCOUNTS LLC
4400 LINDA AVE STE 500
CHARLESTON, SC 29407
800-377-4480 Fax:



8044285644-002

Ship Ticket

SHIP TO:
OT OUR-TRUCK
DATE
3/21/21

SHIP TO:
BLUB RAVEN SOLAR
BLUB RAVEN SOLAR
CHRISTIAN GREST
150 TORRILL
ANDLER, SC 27501
800-377-4480 FAX:

QTY	DESCRIPTION	UNIT PRICE	TAXES	NET AMT	SHIP DATE
34	ea UNIRAC 2501100 SEM TRIMBALL UNIV CLIP W/HDM Your Label 13			8044285644-002	03/21/21
3	ea IL500 OBL-43BT 4-14 LAY IN GROUND DUSH LOG DIRECT SERIAL TIN PLATED Your # IL500BLADT Your Label 14				
23	ea UNIRAC 2501000 SEM H/S BORDING BLADE Your Label 15				
14	ea UNIRAC 2501305 SEM TRIP AND CAME Your Label 16				
1	ea 500 D050200 SWITCH NOT POSSIBLE EO 240V 50A 2P Your # M050200 Your Label 17				
1	ea EXPEND X-10-AMC-240-3-MS AC COMBUSEX BOX W/ 10 BRKDY FOR 10A SINGLE-PHASE W/ RACE OR CTS EOL-200-EPLOY Your Label 18				

Metering



Meters Not Enabled

Set up metering now



Monitoring



Not Connected to Enlighten



31 Microinverters

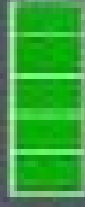


31 Detected

Scan Inactive >

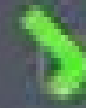


31 Communicating



26 Profile Set

Profile: IEEE 1547 default 2015



31 Producing Power



0 AC Batteries



Envoys Communications Gateway Report

6/26/2021 3:15 PM

Envoy

Serial Number: 202117062366

Software Version: R5.0.55 (4f2662)

Connection to Enlighten: None

Type: IQ Envoy

Production Meter

Disabled

Consumption Meter

Disabled

Microinverters: 31

Grid Profile IEEE 1547 default 2015 applied to 31

IQ-Series Microinverters:

202106053540

Last Report: 6/26/2021, 3:08 PM - 0 W

202106054549

202106053540

Last Report: 6/26/2021, 3:08 PM - 0 W

202106054549

Last Report: 6/26/2021, 3:10 PM - 0 W

202106054794

Last Report: 6/26/2021, 3:09 PM - 0 W

202106054863

Last Report: 6/26/2021, 3:09 PM - 0 W

202106054943

Last Report: 6/26/2021, 3:09 PM - 0 W

202106055176

Last Report: 6/26/2021, 3:09 PM - 0 W

202106055186

Last Report: 6/26/2021, 3:08 PM - 0 W

202106055362

Last Report: 6/26/2021, 3:10 PM - 0 W

Last Report: 6/26/2021, 3:08 PM - 0 W

202106055486

Last Report: 6/26/2021, 3:10 PM - 0 W

202106055595

Last Report: 6/26/2021, 3:08 PM - 0 W

202106055603

Last Report: 6/26/2021, 3:09 PM - 0 W

202106055604

Last Report: 6/26/2021, 3:10 PM - 0 W

202106055874

Last Report: 6/26/2021, 3:10 PM - 0 W

202106056053

Last Report: 6/26/2021, 3:10 PM - 0 W

202106056071

Last Report: 6/26/2021, 3:08 PM - 0 W

202106056078

202114000801

Last Report: 6/26/2021, 3:10 PM - 0 W

202114006470

Last Report: 6/26/2021, 3:08 PM - 0 W

IEEE 1547 default 2015 Settings for IQ-Series

Microinverters:

Frequency limits

Over frequency limit: 60.5 Hz

Over frequency trip time: 160 ms

Under frequency limit: 59.3 Hz

Under frequency trip time: 160 ms

Reconnect

Anti-islanding reconnect time (long): 305 s

Voltage limits

Over voltage limit: 144.0 V

Over voltage limit (slow): 132.0 V

Over voltage trip time: 160 ms

Over voltage trip time (slow): 1,000 ms

Under voltage limit: 60.0 V

All LEDs

- Flashing green when software upgrade is in progress.
- Flashing amber when (1) Error is being set up



IQ Combiner 3 ES

Photovoltaic
Combiner Box
X-IQ-AM1-240-3-ES



Electrical ratings

Voltage 240VAC, 60Hz
 DC Breakers 80A MAX (combined)
 DC Inputs 64A MAX (combined)
 Output 55A MAX, 90A MAX feeder DCPD
 Temperature -45°C MAX ambient
 Use only Eaton BR series Breakers (60A max)

S/N:

282117062366

P/N:

883-00820-11

Dedicated solar and DG Combiner Box - do not add loads 10 AMP
 Every Breaker not used for backfeed

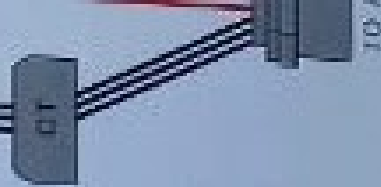
Connection	Wire sizes	Torque
DC Breaker	14-18 AWG 8 AWG 6-4 AWG	2.2 Nm (20 lb-in) 2.8 Nm (25 lb-in) 3.0 Nm (27 lb-in)
DC Circuit Breaker only	4-10 AWG	5.0 Nm (45 lb-in)
Neutral and ground		
Large screw	14-10 AWG	5.0 Nm (45 lb-in)
Small screw	6-14 AWG	2.2 Nm (20 lb-in)
Main Lug	10-4 AWG 3-2/0 AWG	5.0 Nm (45 lb-in) 5.6 Nm (50 lb-in)

Copper conductors only, rated min. 75°C.
 Follow NFPA 70 (NEC) or CSA C22.1 part 1, and all local codes.

For DC Breakers larger than 20A, use wire insulated for 90°C based on 75°C compatibility.

Designed in California and New Zealand
 Made in Mexico

For IQ-8













Christian Street
150 Laurel Dr
Asheville, NC 28750



Charge Meter
Vest System On
Nippon MC 4750

100V-100A





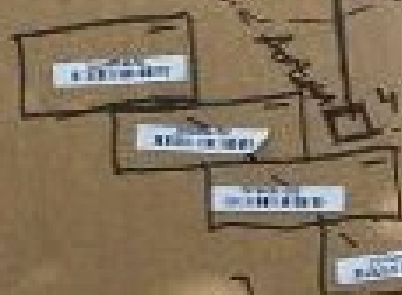
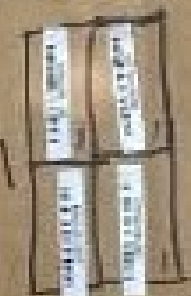
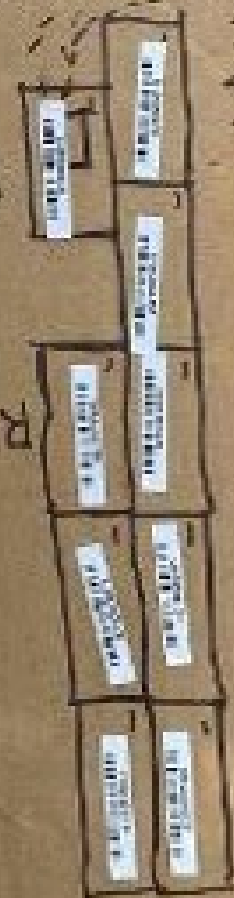


Check for voltage
150 Amps
Amperage 150 75 50



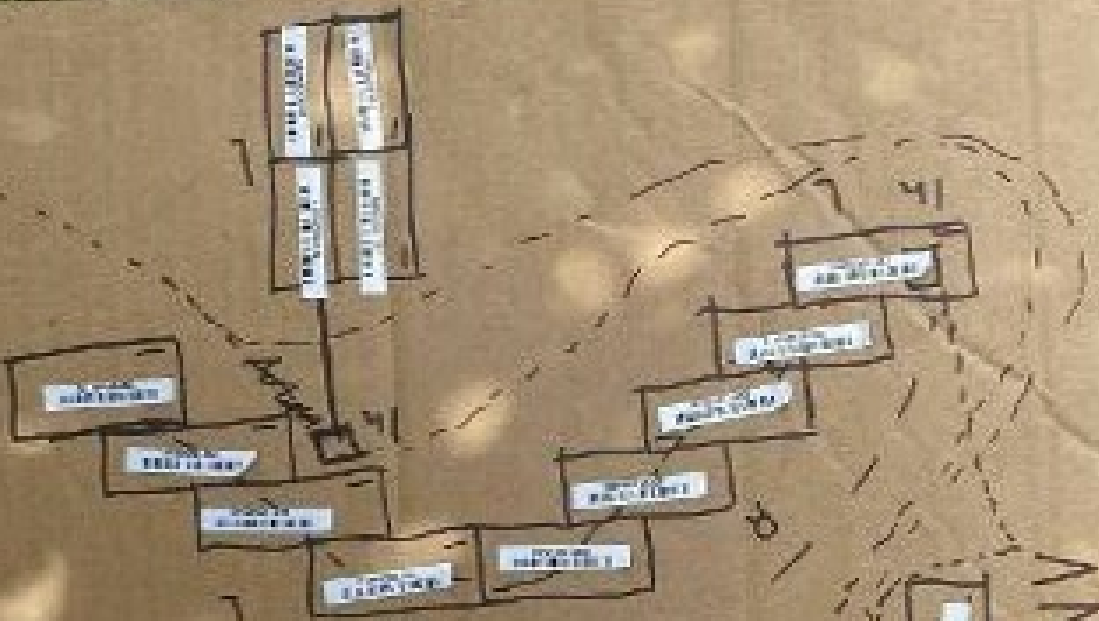


ANNI



100
R

18
R
L



18
R
L

INV



Q

2h

R



Handwritten scribble

R

4

WATERLOO PUBLIC LIBRARY
652-888-5507

WATERLOO PUBLIC LIBRARY
202700154749

WATERLOO PUBLIC LIBRARY
2027110150095

WATERLOO PUBLIC LIBRARY
2027110150422

WATERLOO PUBLIC LIBRARY
20271101504013

WATERLOO PUBLIC LIBRARY
20271101501272

WATERLOO PUBLIC LIBRARY
20271101501280

WATERLOO PUBLIC LIBRARY
20271101501280

WATERLOO PUBLIC LIBRARY
20271101501280

WATERLOO PUBLIC LIBRARY
4003712

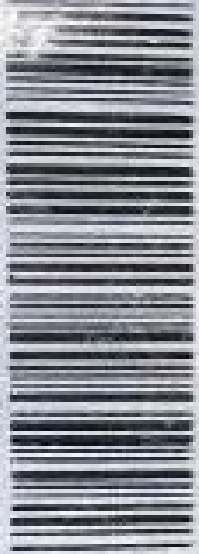


1h

1h

 UNIRAC

www.unirac.com



256072U

SFM TRIMRAIL 72" UNIV DRK

Pack Size . 4

WD/PO# 0042962-00

Manufacture date: SEP-2020



B 10039 36216 7



California Proposition 65  WARNING: Cancer and
Reproductive Harm -- www.P65Warnings.ca.gov

ENPHASE®

Model number: X-10-AM1-240-3-ES

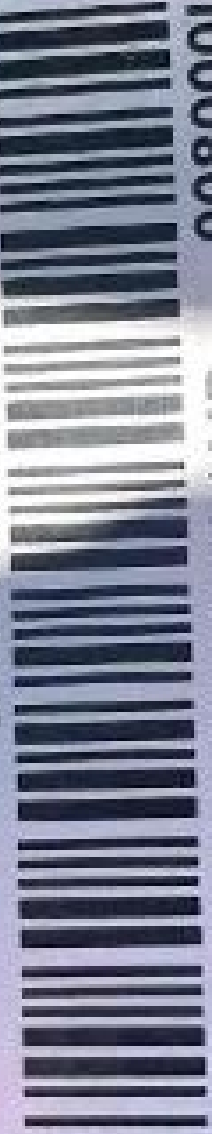

Part number: 883-00820-11


Qty: 1


Serial number: 202117062366


Carton number: ENP 202118002039


 **UNIRAC**
BETTER SOLAR STARTS HERE



SFM N/S BONDING CLAMP



008000U

Pack Size: 20

UPC Code



8 110039 136089 7

Assembly Date:

12/10/20-01/10/21

PO#0043552-00

California Proposition 65  WARNING: Cancer and
Reproductive Harm - www.P65Warnings.ca.gov



FLASHKIT SFM TRIM S



004201D

FLASHKIT SFM TRIM S COMP DARK
Pack Size : 10

UPC Code



Assembly Date:
10/10/20-11/10/20

Trinasolar



F01210107600079

Trinasolar

TSM-325DD06M.05(II)



Maximum Power	(P _{max})	325W±3%
Maximum Power Voltage	(V _{mp})	33.6V
Maximum Power Current	(I _{mp})	9.67A
Open Circuit Voltage	(V _{oc})	40.4V±3%
Short Circuit Current	(I _{sc})	10.30A±4%
Maximum Series Fuse		20A
Power Selection		0 - 5kW
Module Application		Class A
Maximum System Voltage		IEC 1000V, 1000V
Electrical Rating At STC AM-1.5 IRRAD-ANCE=1000W/m ² Temp =25 °C		

For field connections, use minimum 4mm²(No. 12AWG) copper wires insulated for a minimum 80 °C.



WARNING-ELECTRICAL HAZARD

This module produces electricity when exposed to light. Follow all applicable electrical safety precautions.

- Module has no voltage rating Class C (for CS-6022, 2 No. 5x730) and module has performance Type 2 for UL61730.
- System Fire Class Rating: See Installation Instructions for Installation Requirements to UL fire ratings with a UL954 Class Rating with the Product/Classe nominale du système contre incendie; voir les instructions d'installation.
- See module literature for appropriate mating connectors. (Voir la documentation du module concernant les connecteurs appropriés).



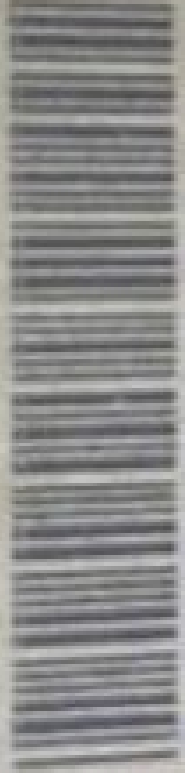
LISTED

www.trinasolar.com

Trinasolar (USA) Inc.
10000 W. 16th Ave.
Golden, CO 80401

www.trinasolar.com

Assembled in Thailand



FLASHKIT SFM SLIDER 6

004271D

FLASHKIT SFM SLIDER 3 COMP OVA
CARTON Pack Size : 10
Factory Code: 61



WOPUR 004271D-01 Manufacture date: 10/01/2010



Handwritten number 7



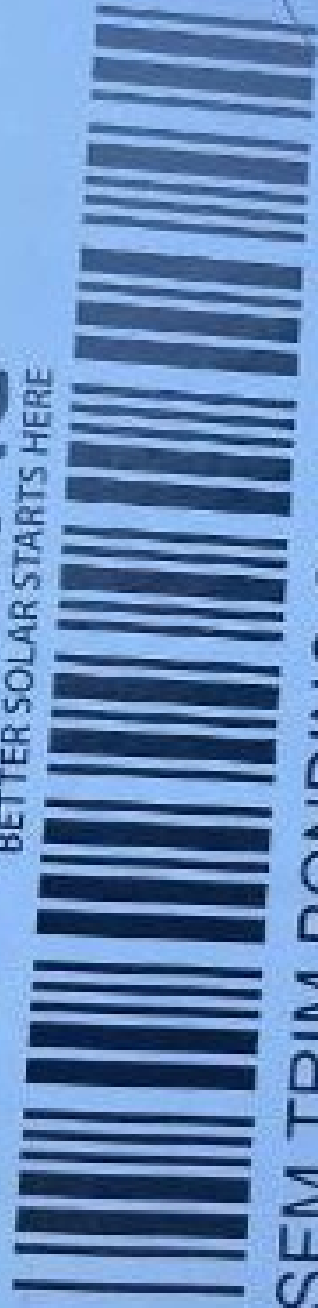
127



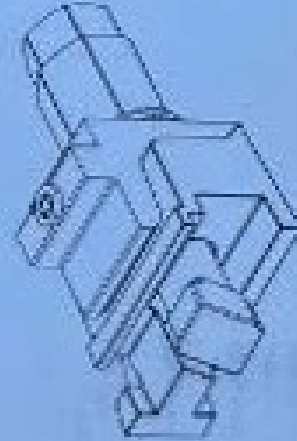
840-00368-14
250VAC 20A
+75°C 2051



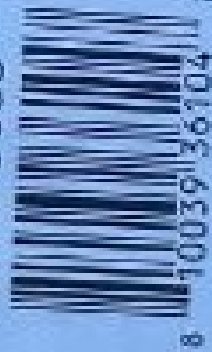
BETTER SOLAR STARTS HERE



SFM TRIM BONDING CLAMP 008100U



UPC Code



8 100391 36104 7

Pack Size: 40

Assembly Date:

12/10/20-01/10/21

PO#0043552-00

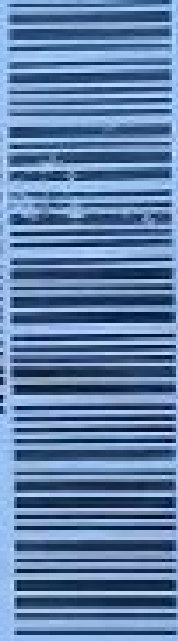
California Proposition 65  WARNING: Cancer and Reproductive Harm -- www.P65Warnings.ca.gov

4



 **UNIRAC**[®]
BETTER SOLAR STARTS HERE

www.unirac.com



2 5 0 0 1 0 U

SFM SPLICE 6.5"

Pack Size: 10

WO/PO# : 0043309-00

Manufacture date: 1/11/2011

Factory Code : 010A



010A 0043309-00 UNIRAC



STRAIN RELIEF CORD CONNECTOR
NON - METALLIC LIQUID - TIGHT
CORD RANGE .375 - .750
PATENTED, OTHER PATENTS PENDING

SIZE

3/4"

QUANTITY

10

CAT. NO

LPCG757

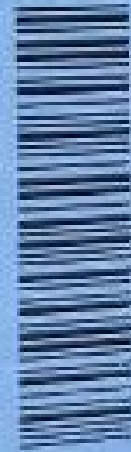


LIMITED



LISTED

MADE IN USA



20018997361000

ARLINGTON
SCRANTON, PA
airfittings.com

 **UNIRAC**[®]
BETTER SOLAR STARTS HERE



SFM TRIM END CAPS



250130U

UPC Code



8 10039 36121 6

Pack Size: 10

Assembly Date:

02/10/21-03/10/21

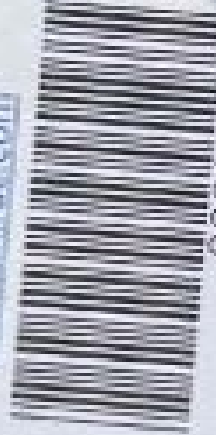
PO#0043676-00

California Proposition 65  WARNING: Cancer and
Reproductive Harm - www.P65Warnings.ca.gov

 **UNIRAC**[™]

BETTER SOLAR STARTS HERE

www.unirac.com



008114M

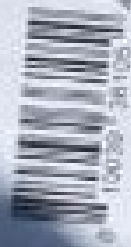
MLPE MOUNT ASSY

Pack Size - 10

WO/PO# 0043821-00

Manufacture date: 01/2021

Factory Code: 025A



 **ENPHASE.**

IQ7

IQ7 Core Inverter, Inverter/Converter
For Enphase pattern inform about, refer to:
<http://www.enphase.com/company/technical>

Power Factor Range: 0.9-0.98
DC Input Range: 18-48V
Max. Input Amperes (continuous): 30A
Max. Input Voltages (continuous): 50V
AC Output Voltage: 208V/240V
AC Output Current: 1.7A/1.2A
AC Output Frequency: 60Hz
AC Output Phase (max. power): split phase
Operating Temperature: -40°C to 60°C
Ingress Protection: IP65 (NEMA 4)
Inverter/Converter Brand: Busback
Type: 7.5kW
IEC 60947-1 and IEC 60947-2
UL1741 & Compliant | Available in Canada



This device complies with part 15 of the FCC Rules. Operation is subject to the following two conditions: (1) This device may not cause harmful interference. (2) This device must accept any interference received, including interference that may cause operation.



CAUTION: RISK OF SHOCK. THIS INVERTER/CONVERTER IS A TYPE B DEVICE. IF IT IS FOUND TO BE DEFECTIVE, IT MUST BE REPAIRED OR REPLACED. REPAIRS SHOULD BE PERFORMED BY QUALIFIED SERVICE PERSONNEL.

WARNING: ELECTRIC SHOCK HAZARD. DISCONNECT THE PHOTOVOLTAIC SYSTEM BEFORE WORKING ON THIS PHOTOVOLTAIC SYSTEM. ALL ELECTRICAL CONNECTIONS MUST BE MADE TO THE PHOTOVOLTAIC SYSTEM IN ACCORDANCE WITH THE NATIONAL ELECTRICAL CODE (NEC) AND ALL APPLICABLE LOCAL, STATE AND FEDERAL REGULATIONS. PHOTOVOLTAIC SYSTEMS ARE CAPABLE OF PRODUCING HAZARDOUS LEVELS OF LIGHT, HEAT, AND ARC FLASHES. TO REDUCE THE RISK OF BURNING, DO NOT TOUCH

ATTENTION: RISK OF ELECTRIC SHOCK. DISCONNECT THE PHOTOVOLTAIC SYSTEM BEFORE WORKING ON THIS PHOTOVOLTAIC SYSTEM. ALL ELECTRICAL CONNECTIONS MUST BE MADE TO THE PHOTOVOLTAIC SYSTEM IN ACCORDANCE WITH THE NATIONAL ELECTRICAL CODE (NEC) AND ALL APPLICABLE LOCAL, STATE AND FEDERAL REGULATIONS. PHOTOVOLTAIC SYSTEMS ARE CAPABLE OF PRODUCING HAZARDOUS LEVELS OF LIGHT, HEAT, AND ARC FLASHES. TO REDUCE THE RISK OF BURNING, DO NOT TOUCH

UL[®]
CERTIFIED
SWITCH-DA
E486080

+

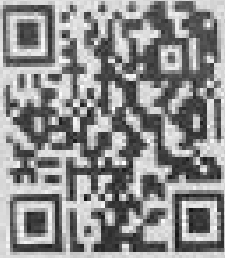
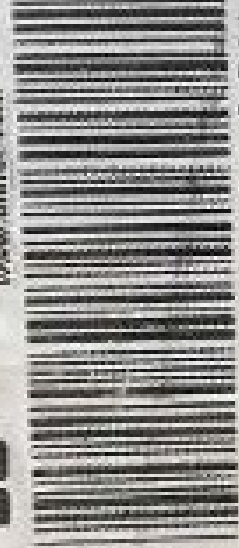
840-00385-11
100VDC 20A
+79°C 2081

CE ROHS
NING 1

Do not disconnect
under load



www.unirac.com



250120U

SFM TRIM SPLICE DRK

Pack Size - 10

WO/POP

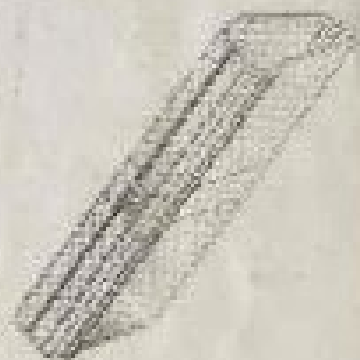
0043319-00

Manufacture date: 10-01-2021

Factory Code: 010A



#11-0039-36129-117







 ecobee

ecobee



0.00%

75

Calibrating
Heat/Cool disabled

76 until 11:30 pm



76

ecobee





x Ch. 11. 12















120VOLTAGE
SOURCE

15 AMP
120 VOLT
TYPE L
THIS BOX IS
FOR THE
USE OF
A 15 AMP
CIRCUIT
BREAKER