





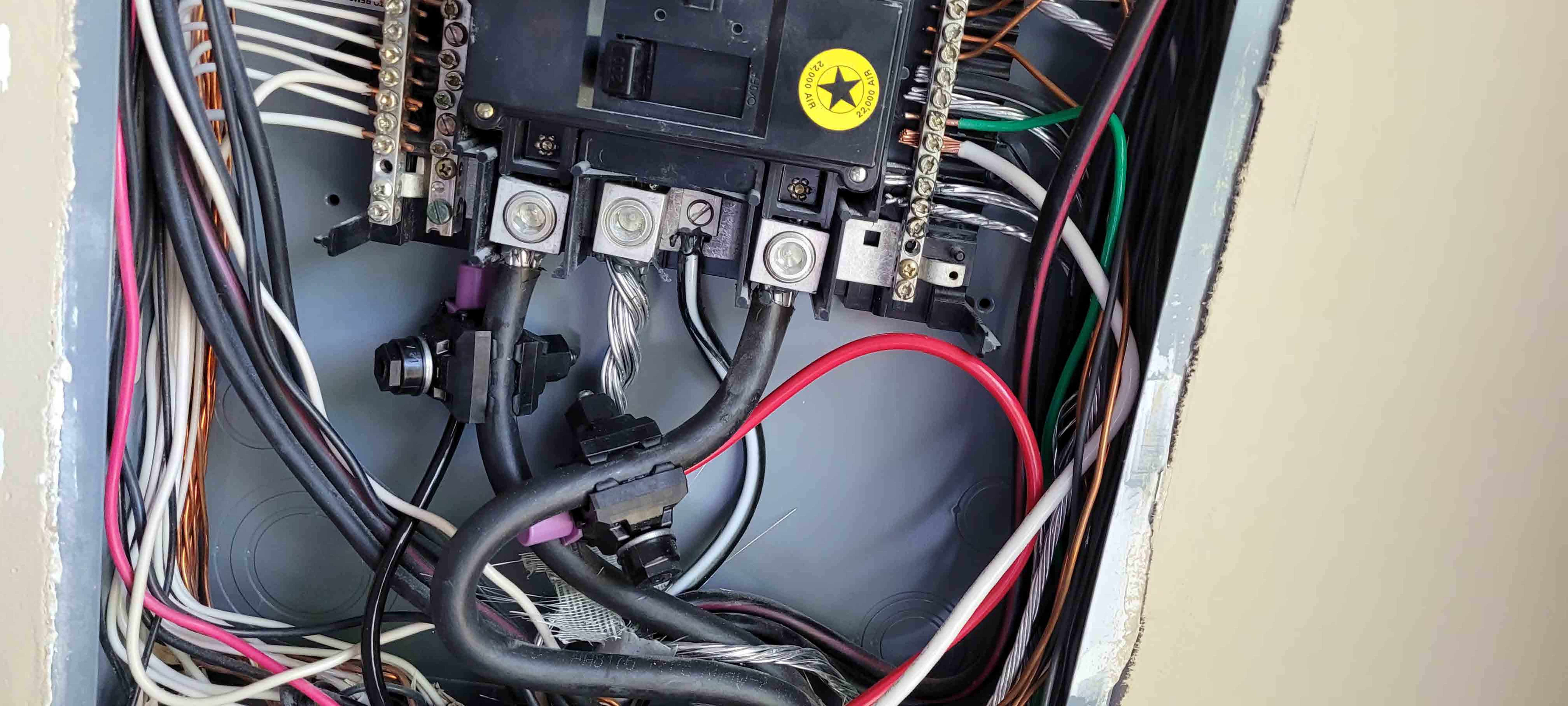


86

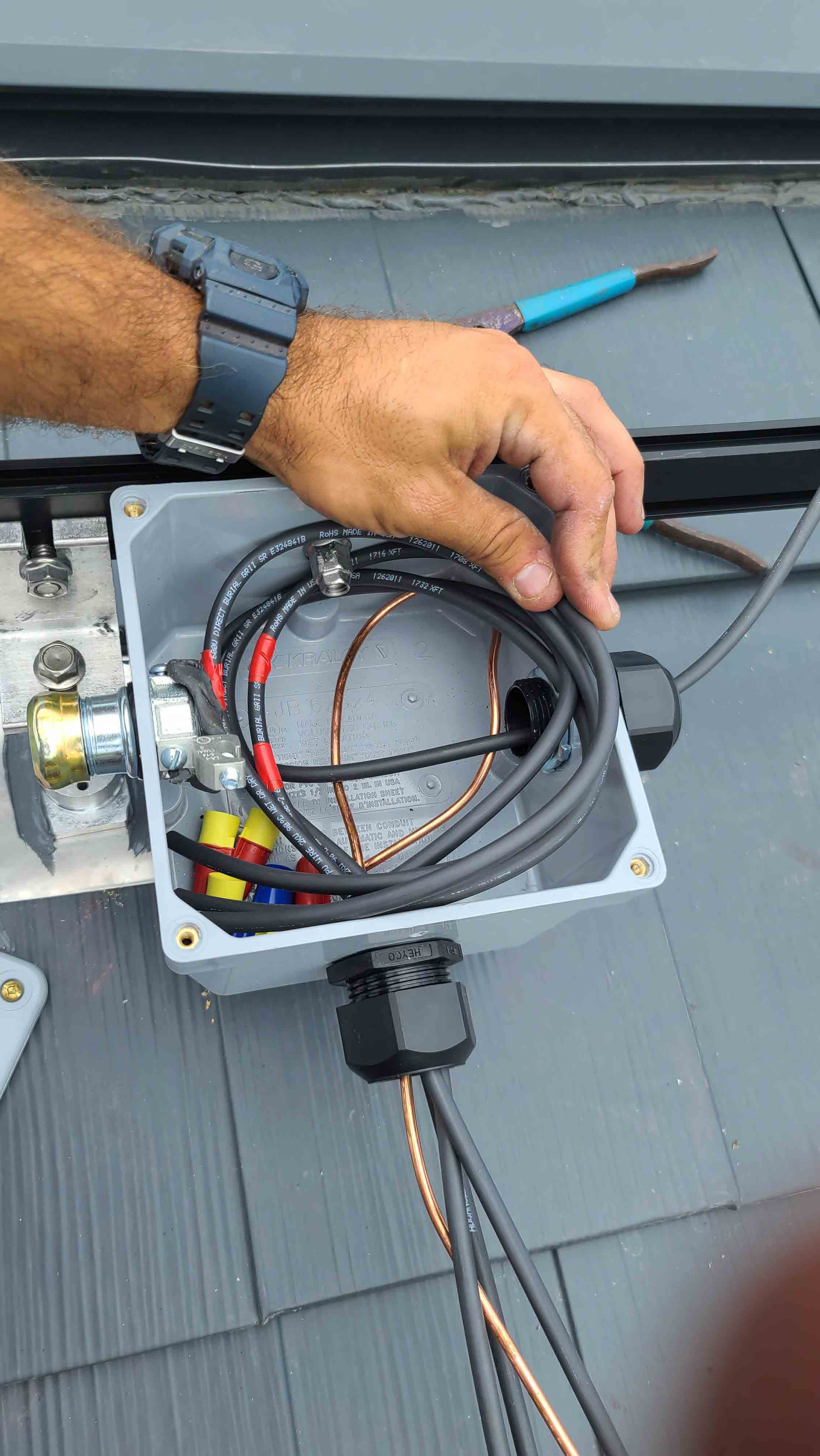
























under load

12AWG WIRE

DRY

90°C

WET

600V

DIR

SUN

RES

39U







WARNING: PHOTOVOLTAIC  
POWER SOURCE





Do Not Remove  
21591E80-48



Intertek  
4004590



FC

### CAUTION

HOT SURFACES-TO REDUCE THE RISK OF BURNS-DO NOT TOUCH.  
RISK OF ELECTRIC SHOCK-WHEN THE PHOTOVOLTAIC ARRAY IS EXPOSED TO LIGHT, IT SUPPLIES A DC VOLTAGE TO EQUIPMENT. COVER PV MODULE WITH OPAQUE MATERIAL BEFORE CONNECTING OR DISCONNECTING THIS OPTIMIZER.  
DURING FAULT, ZERO CURRENT IS SOURCED INTO DC ARRAY BY CONVERTER.

### WARNING

ELECTRIC SHOCK HAZARD. THE DC CONDUCTORS OF THIS PHOTOVOLTAIC SYSTEM ARE UNGROUNDED AND MAY BE ENERGIZED.

### AVERTISSEMENT

RISQUE DE CHOC ELECTRIQUE: QUAND LE CHAMP PHOTOVOLTAIQUE EST EXPOSE A LA LUMIERE, UNE TENSION CC EST FOURNIE A CET EQUIPEMENT.  
SURFACES CHAUDES: NE PAS TOUCHER, AFIN DE REDUIRE LES RISQUES DE BRULURES LE COURANT DE RETOUR INJECTE PAR LE CONVERTISSEUR EN CAS DE DEFAILLANCE DANS LE MODULE PV EST TOUJOURS NUL.



E329163-5 PV WIRE 12AWG 105°C





**CAUTION**

Do not touch the lens or the sensor. Touching the lens or the sensor may damage them and affect the performance of the device. Do not use the device in the rain or in other wet conditions. Do not use the device in the presence of flammable or explosive materials.

**WARNING**

Read the user manual for the correct use of the device. Do not use the device if you are not familiar with its operation. Do not use the device if you are not familiar with its safety instructions.

**AVERTISSEMENT**

N'oubliez pas de lire le manuel de l'utilisateur pour l'utilisation correcte de l'appareil. Ne pas utiliser l'appareil si vous n'êtes pas familier avec son fonctionnement. Ne pas utiliser l'appareil si vous n'êtes pas familier avec ses instructions de sécurité.







**CAUTION**  
HOT SURFACES TO REDUCE THE RISK OF BURNS, DO NOT TOUCH.  
RISK OF ELECTRIC SHOCK WHEN THE PHOTO-OPTIC ARRAY IS EXPOSED TO LIGHT. IT SUPPLIES A DC VOLTAGE TO EQUIPMENT. COVER BY MODULE WITH DRAINAGE MATERIAL BEFORE CONNECTING OR DISCONNECTING THIS OPTIMIZER. DURING FAULT, ZERO CURRENT IS SOURCED INTO DC ARRAY BY CONVERTER.

**WARNING**  
ELECTRIC SHOCK HAZARD. THE DC CONDUCTORS OF THIS PHOTOVOLTAIC SYSTEM ARE UNGROUND AND MAY BE ENERGIZED.

**AVERTISSEMENT**  
RISQUE DE CHOC ELECTRIQUE QUAND LE CHAMP PHOTOVOLTAIQUE EST EXPOSE A LA LUMIERE. UNE TENSION CC EST FOURNIE A CET EQUIPEMENT. S'IL Y A UN DEFAUT, UN COURANT NUL REQUIERT LES RISQUES DE BRULURES. LE COURANT DE RETOUR INJECTE PAR LE CONVERTISSEUR EN CAS DE DEREGLEMENT DANS LE MODULE PV EST TOUJOURS NUL.

Do Not Remove  
2300A1-10  
UL  
4004590  
FC

25 FT  
3 FT 6 IN  
INCHES  
2 3 4 5 6 7 8 9

17 18 19 20 21 22 23 24 25 26





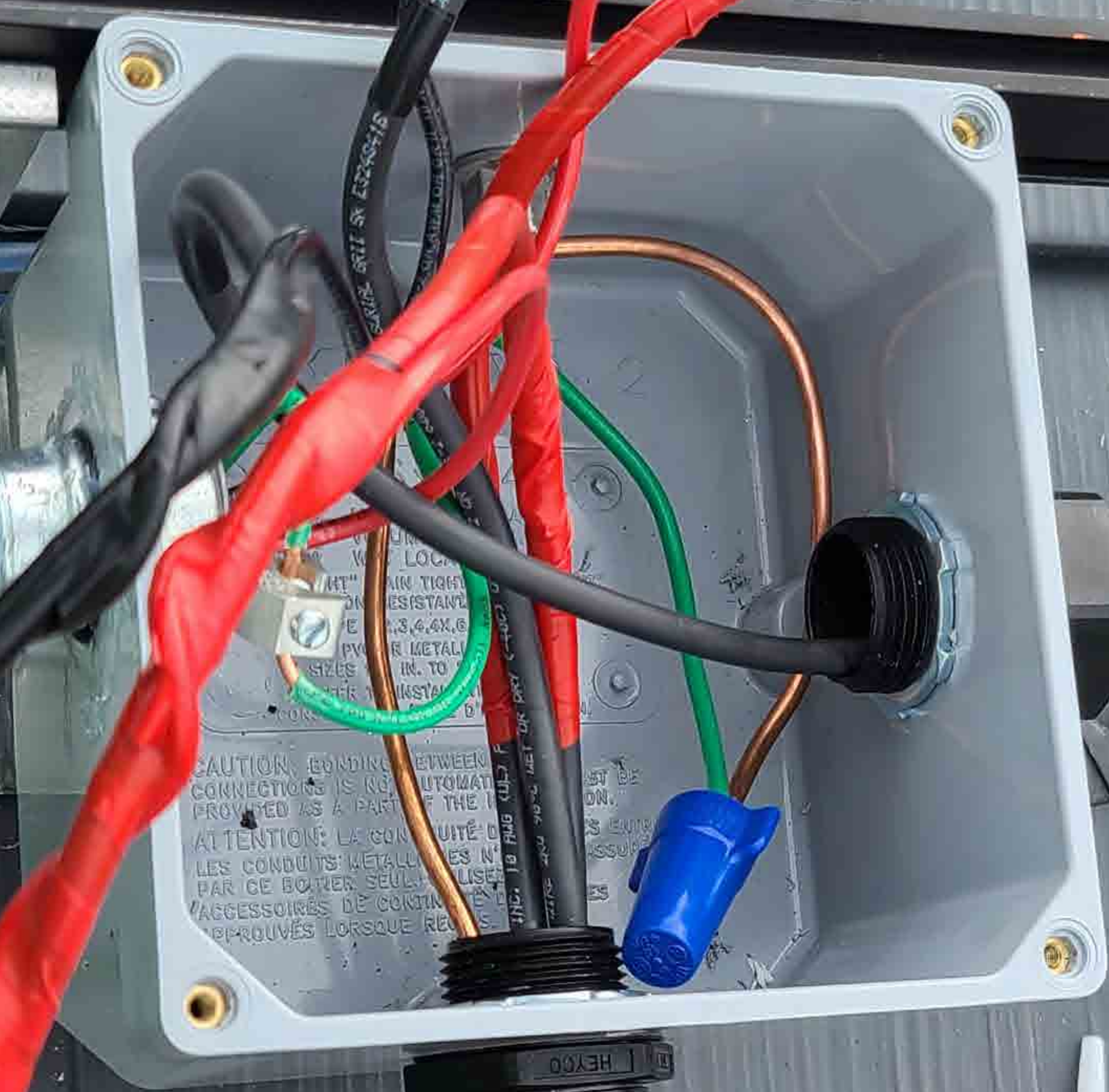




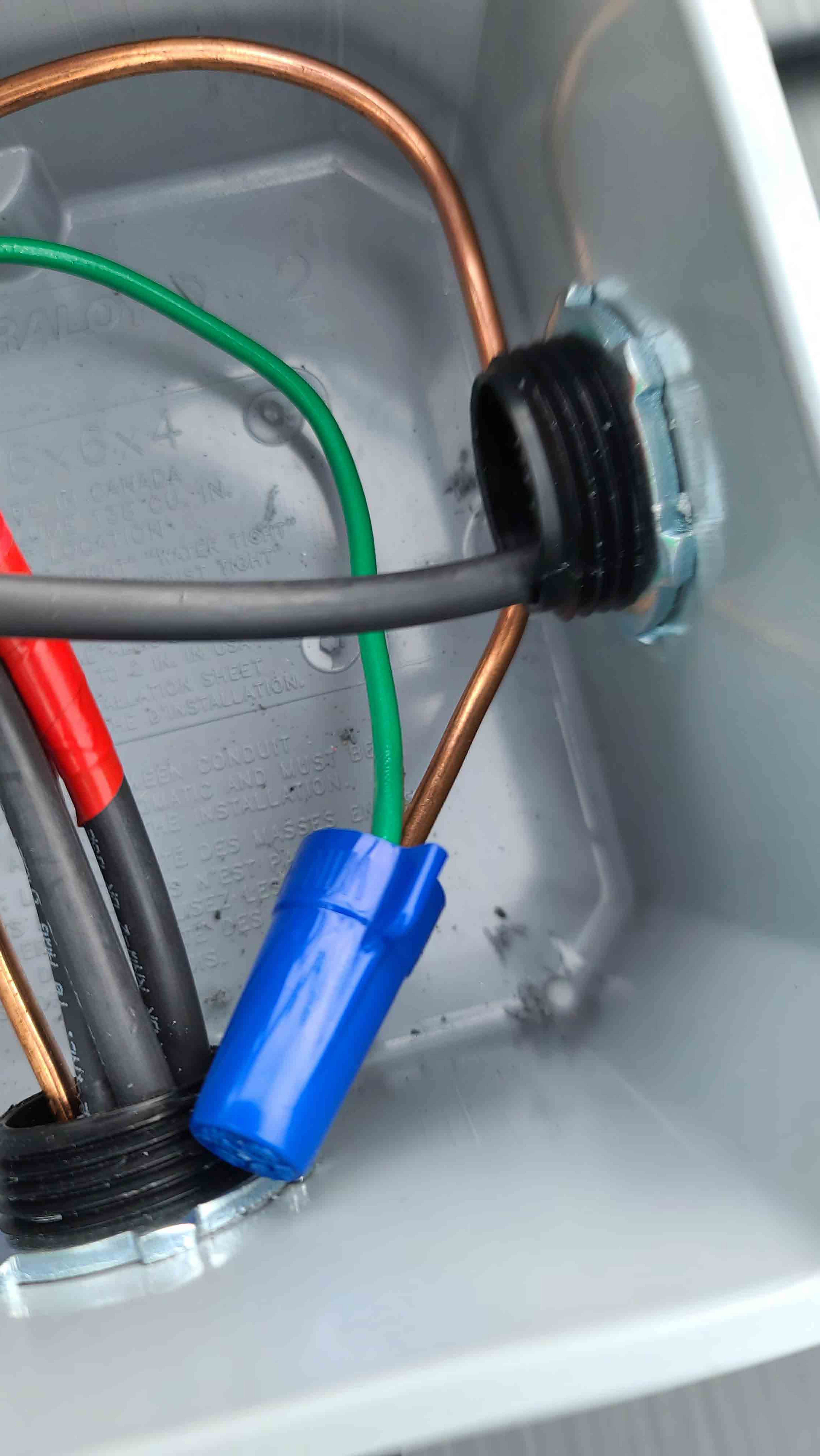
DO NOT STACK  
DO NOT OPEN  
FRAGILE  
KEEP DRY  
THIS SIDE UP  
NO NET WEIGHT  
RECYCLE  
MADE IN KOREA

**Q CELLS**  
Engineered In Germany









ALLOY

0X014

MADE IN CANADA  
VOLUME 128 CU. IN.

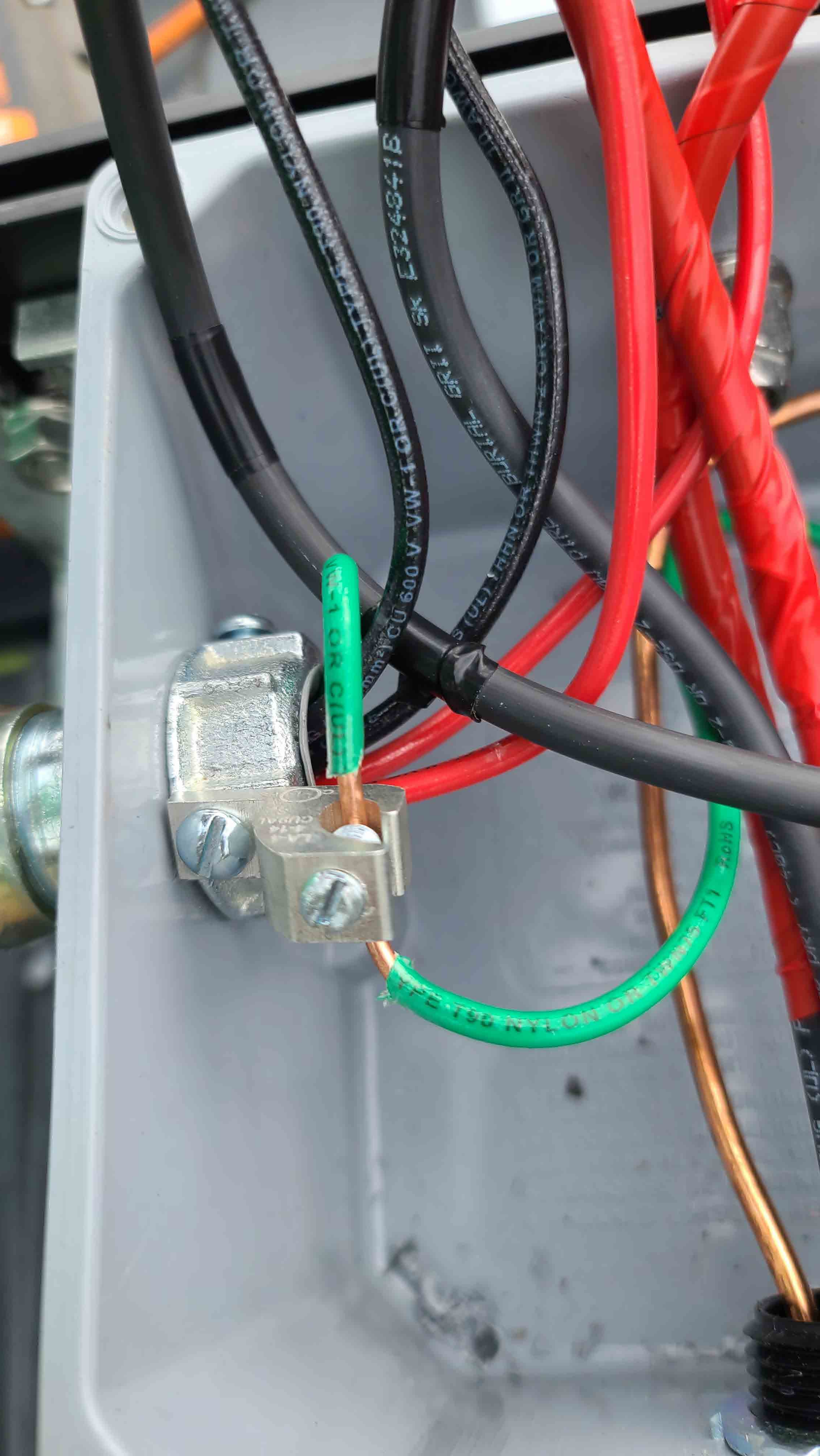
LOCATION  
WATER TIGHT  
TIGHT

TO 2 IN. IN USE  
INSTALLATION SHEET  
INSTALLATION

CONDUIT  
MUST BE  
INSTALLATION

DES MASSES EN  
BEST  
SEZ LES  
DES









WARNING: PHOTOVOLTAIC  
POWER SOURCE

WARNING: PHOTOVOLTAIC  
POWER SOURCE

Southwire

RIDGID 19V  
Lithium-Ion





WARNING: PHOTOVOLTAIC  
POWER SOURCE

Southwire

Ridgid  
Heat Gun  
1000W



ENGINEERED, DESIGNED AND QUALITY TESTED BY Q CELLS IN GERMANY

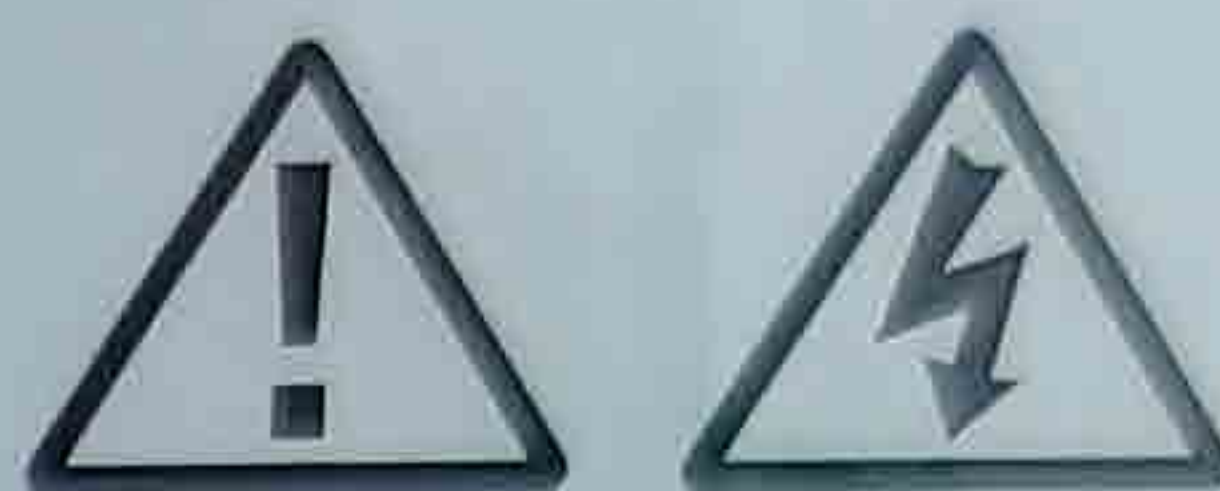
# Q.PEAK DUO BLK-G8+ 340

# Q CELLS

## PERFORMANCE AT STANDARD TEST CONDITIONS\*

Nominal Power* (+5W/-0W)	$P_{MPP}$	[W]	340
Short circuit current*	$I_{SC}$	[A]	10.40
Open circuit voltage*	$V_{OC}$	[V]	40.70
Current at maximum power	$I_{MPP}$	[A]	9.90
Voltage at maximum power	$V_{MPP}$	[V]	34.34
Maximum system voltage	$V_{SYS}$	[V]	1000(IEC) 1000(UL)
Weight	M	[kg / lbs]	19.9 / 43.9

Made in Korea



**DANGER!**  
**Risk of electric shock!**  
 DO NOT connect or disconnect plug contacts while system is under load current. Refer to the Installation and Operation Manual before installing, operating or servicing this unit.

**DANGER!**  
**Risque de choc électrique!**  
 NE PAS connecter ou déconnecter les connecteurs lorsque le système est en charge. Consultez le manuel d'installation et d'utilisation avant installation, utilisation et entretien du produit.

**Fire Rating:** Class C / Type 2  
**Design load:** 55 lbs/ft<sup>2</sup>  
**Fuse Rating:** 20 A  
 For field connections, use minimum No.12 AWG copper wires insulated for a minimum of 90 °C

U.S. Patent No. 9,893,215  
 (solar cells)

**EMAIL** service@q-cells.com  
**WEB** www.q-cells.com

\*Measurement tolerances:  $P_{MPP} \pm 3\%$ ;  $I_{SC}$ ,  $V_{OC} \pm 5\%$  at STC: 1000 W/m<sup>2</sup>, 25 ± 2 °C, AM 1.5 according to IEC 60904-3. Data given are rated (nominal) values.



Serial No.825921082399602031



Hanwha Solutions Corporation, 1329 Daegeum-ro, Geumwang-eup,  
 Eumseong-gun, Chungcheongbuk-do, Republic of Korea, 27632  
 Q CELLS is a brand of Hanwha Solutions Corporation



