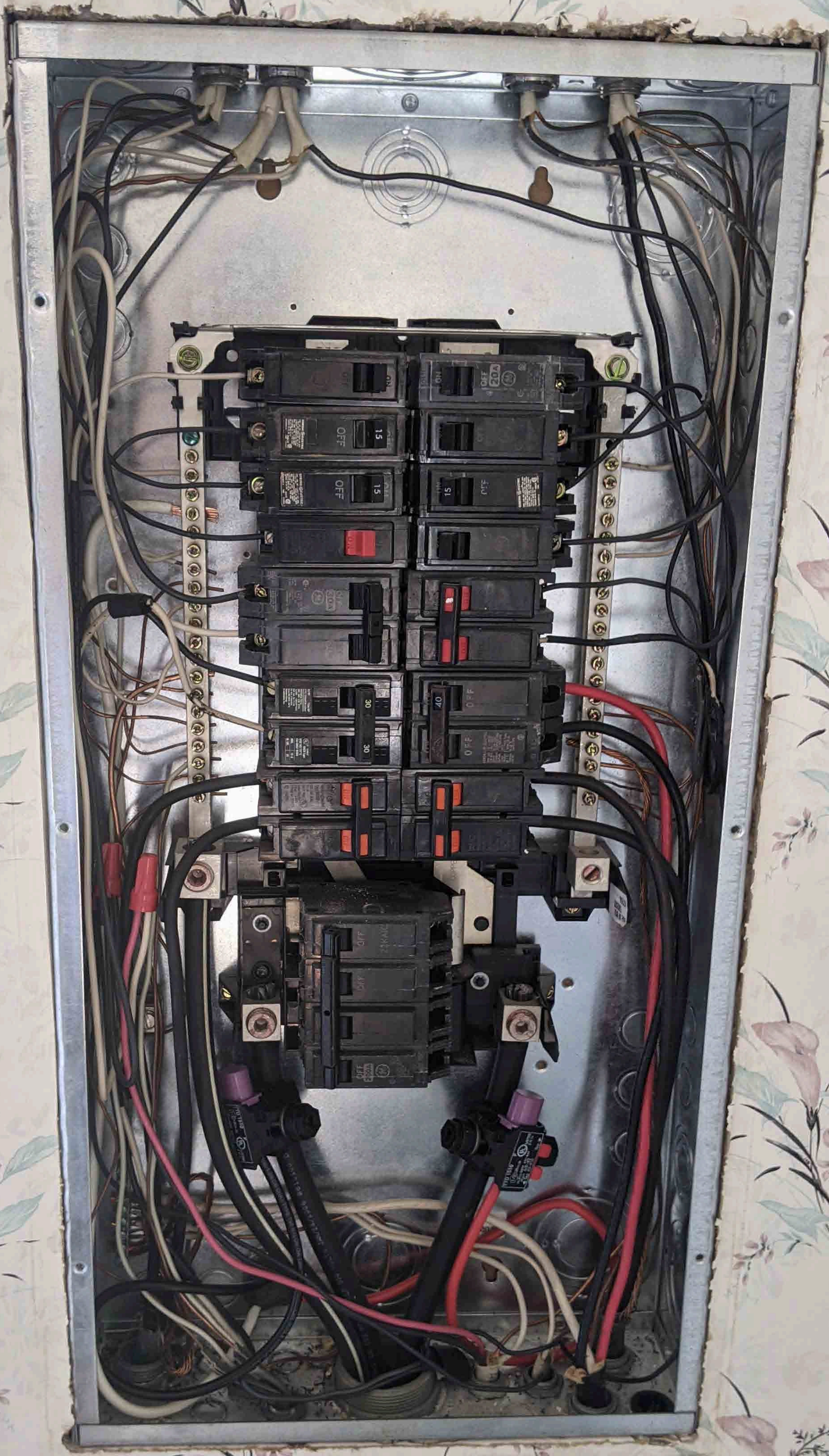




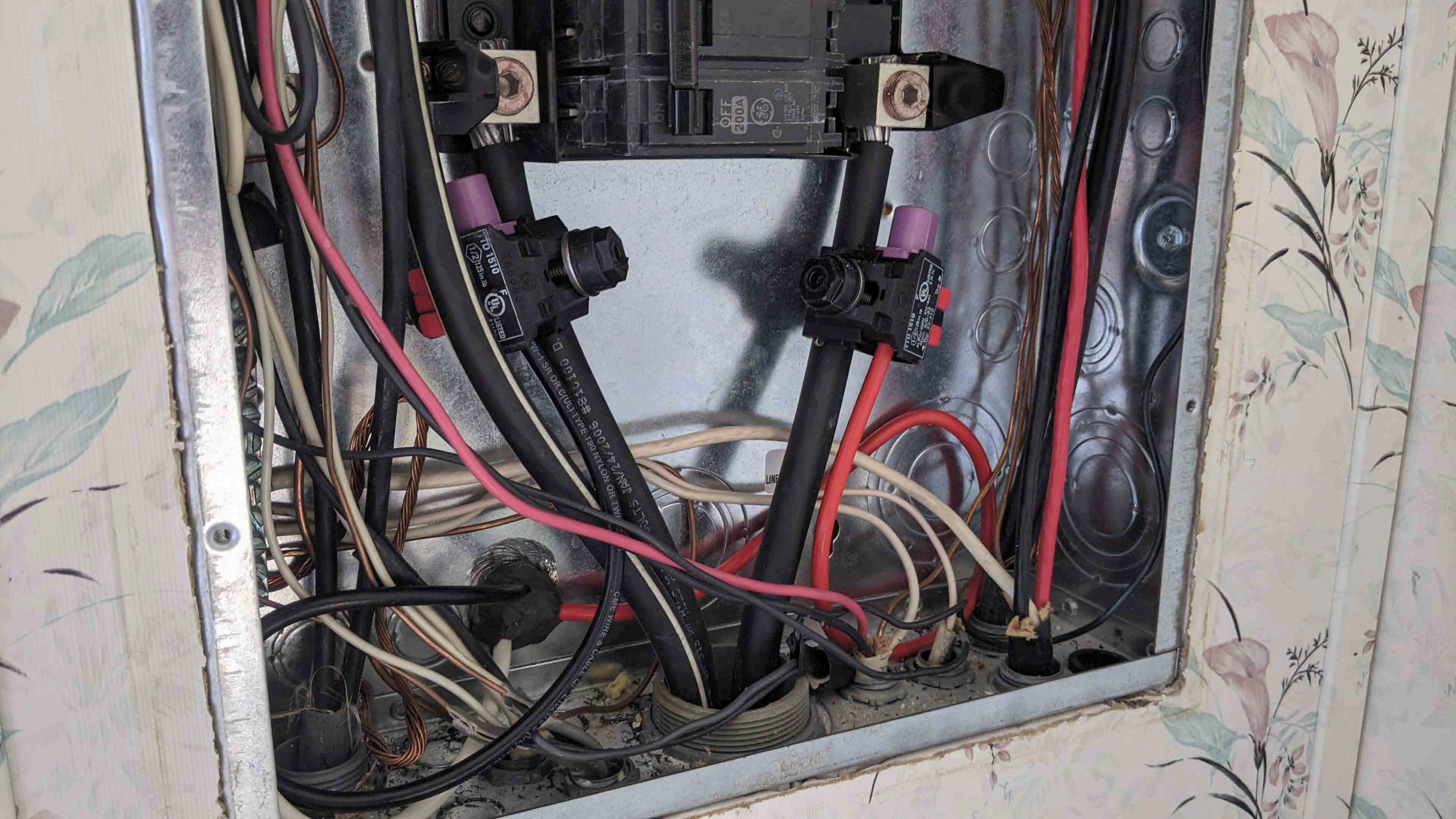
CME WIRE & CABLE CO. EST. 1911

1-WA 1 000-0211  
SR OR C(U) TYPE T&U









OFF  
200A

1510  
UL LISTED  
E

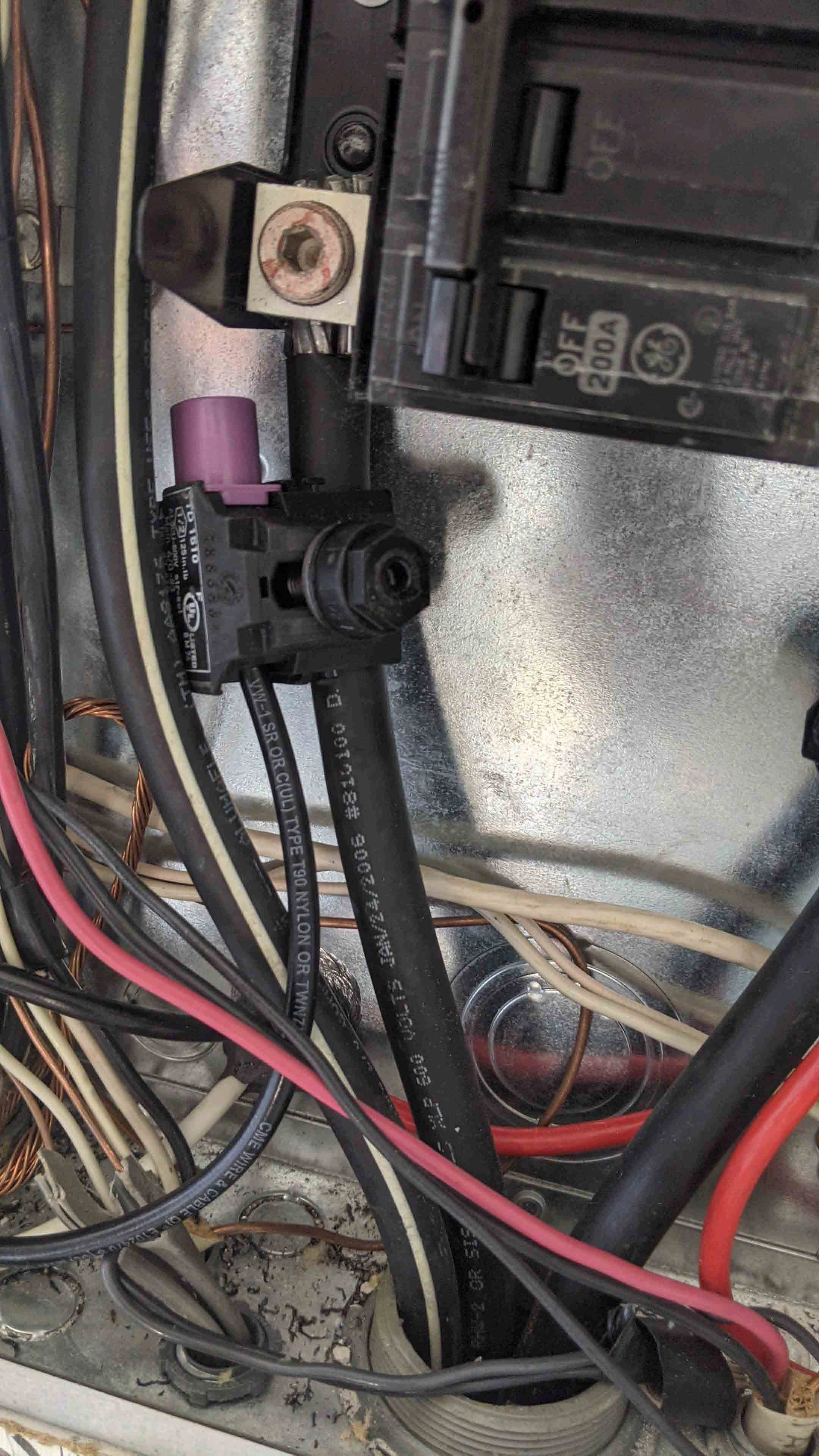
001 1510 1510  
TYPE 180 NYLON OR TYP  
SR OR CUL

1510  
UL LISTED  
E

LINE

CW- WIRE & CABLE





OFF  
200A

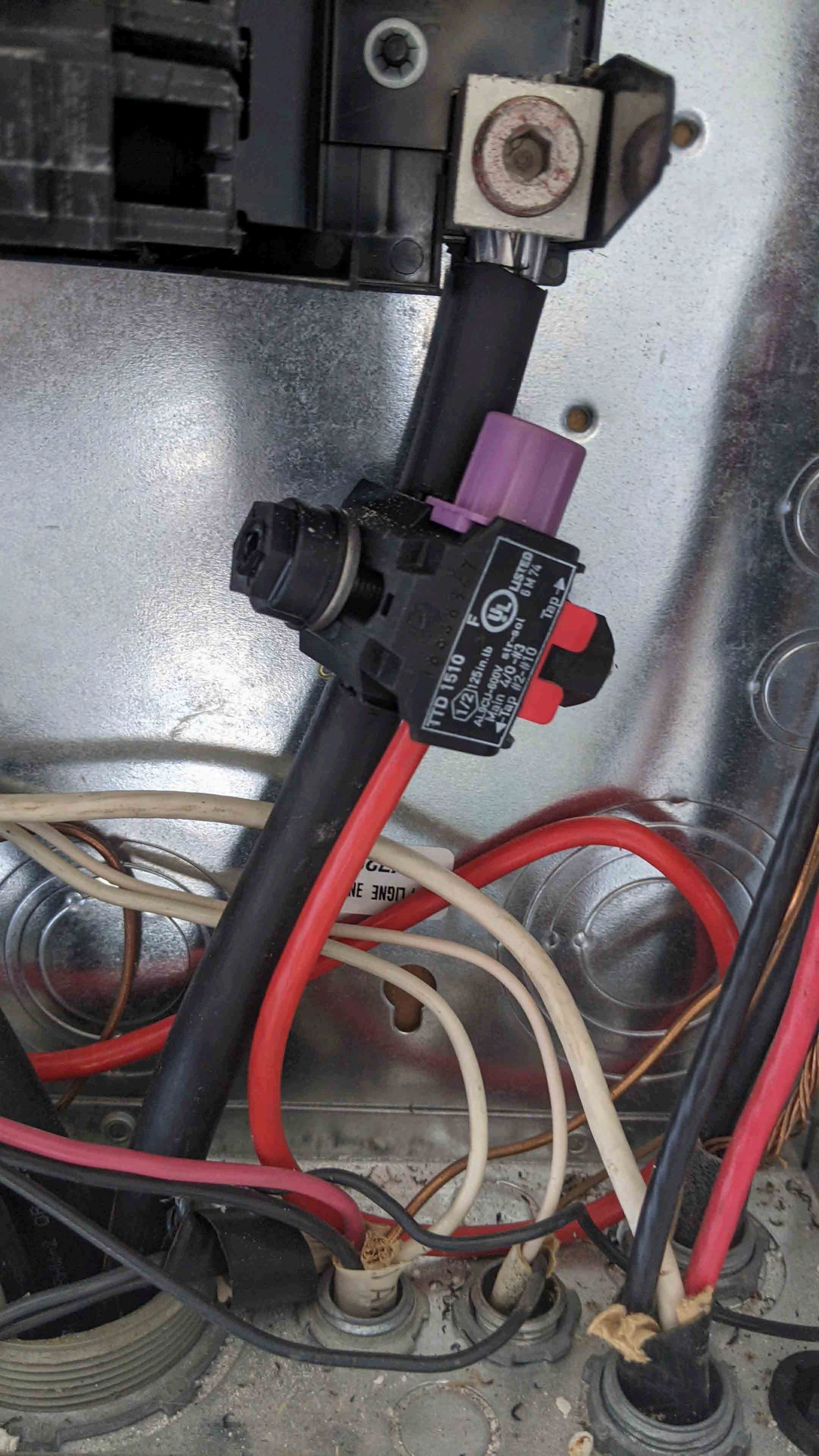
98

TO 1810  
1/2" 20/21/22/23/24  
1/4" 25/26/27/28/29/30  
3/8" 31/32/33/34/35/36  
1/2" 37/38/39/40/41/42  
3/4" 43/44/45/46/47/48  
1" 49/50/51/52/53/54  
1 1/4" 55/56/57/58/59/60  
1 1/2" 61/62/63/64/65/66  
2" 67/68/69/70/71/72  
2 1/2" 73/74/75/76/77/78  
3" 79/80/81/82/83/84  
3 1/2" 85/86/87/88/89/90  
4" 91/92/93/94/95/96  
4 1/2" 97/98/99/100/101/102  
5" 103/104/105/106/107/108  
5 1/2" 109/110/111/112/113/114  
6" 115/116/117/118/119/120  
6 1/2" 121/122/123/124/125/126  
7" 127/128/129/130/131/132  
7 1/2" 133/134/135/136/137/138  
8" 139/140/141/142/143/144  
8 1/2" 145/146/147/148/149/150  
9" 151/152/153/154/155/156  
9 1/2" 157/158/159/160/161/162  
10" 163/164/165/166/167/168  
10 1/2" 169/170/171/172/173/174  
11" 175/176/177/178/179/180  
11 1/2" 181/182/183/184/185/186  
12" 187/188/189/190/191/192  
12 1/2" 193/194/195/196/197/198  
13" 199/200/201/202/203/204  
13 1/2" 205/206/207/208/209/210  
14" 211/212/213/214/215/216  
14 1/2" 217/218/219/220/221/222  
15" 223/224/225/226/227/228  
15 1/2" 229/230/231/232/233/234  
16" 235/236/237/238/239/240  
16 1/2" 241/242/243/244/245/246  
17" 247/248/249/250/251/252  
17 1/2" 253/254/255/256/257/258  
18" 259/260/261/262/263/264  
18 1/2" 265/266/267/268/269/270  
19" 271/272/273/274/275/276  
19 1/2" 277/278/279/280/281/282  
20" 283/284/285/286/287/288  
20 1/2" 289/290/291/292/293/294  
21" 295/296/297/298/299/300

TYPE 190 NYLON OR TWN7  
9002/42/VAI 41701 505 212

CME WIRE & CABLE CO. EVANSTON, ILL.





TT0 1510 F  
UL LISTED  
4/0-600V  
Main 4/0-#3  
Tap #2-#10  
Tap →

ENGINE EN













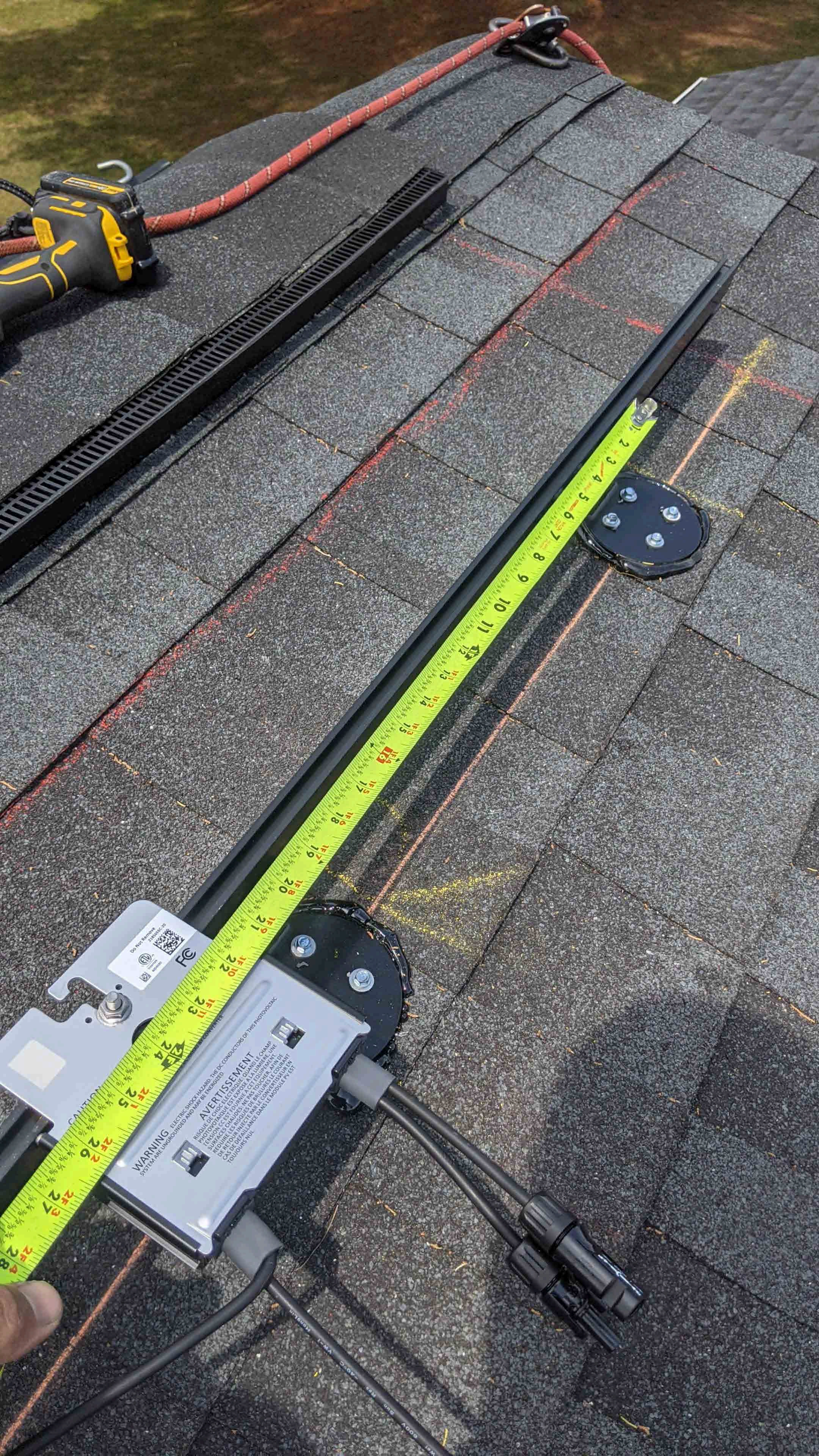












Do Not Remove  
2100000-20

WARNING  
ELECTRIC SHOCK HAZARD: THE DC CONDUCTORS OF THIS PHOTOVOLTAIC SYSTEM ARE UNGROUNDING AND MAY BE ENERGIZED.

**AVERTISSEMENT**  
RISQUE DE CHOC ÉLECTRIQUE DANGEREUX: LES CONDUCTEURS DE CE SYSTÈME PHOTOVOLTAÏQUE SONT NON MISE À LA TERRE ET PEUVENT ÊTRE ÉNERGÉTIQUES. NE PAS TOUCHER LES CONDUCTEURS DE CE SYSTÈME PHOTOVOLTAÏQUE. NE PAS TOUCHER LES CONDUCTEURS DE CE SYSTÈME PHOTOVOLTAÏQUE. NE PAS TOUCHER LES CONDUCTEURS DE CE SYSTÈME PHOTOVOLTAÏQUE. NE PAS TOUCHER LES CONDUCTEURS DE CE SYSTÈME PHOTOVOLTAÏQUE.

CAUTION  
1/8" 1/4" 3/8" 1/2" 5/8" 3/4" 7/8" 1" 1 1/8" 1 1/4" 1 3/8" 1 1/2" 1 5/8" 1 3/4" 1 7/8" 2" 2 1/8" 2 1/4" 2 3/8" 2 1/2" 2 5/8" 2 3/4" 2 7/8" 3" 3 1/8" 3 1/4" 3 3/8" 3 1/2" 3 5/8" 3 3/4" 3 7/8" 4" 4 1/8" 4 1/4" 4 3/8" 4 1/2" 4 5/8" 4 3/4" 4 7/8" 5" 5 1/8" 5 1/4" 5 3/8" 5 1/2" 5 5/8" 5 3/4" 5 7/8" 6" 6 1/8" 6 1/4" 6 3/8" 6 1/2" 6 5/8" 6 3/4" 6 7/8" 7" 7 1/8" 7 1/4" 7 3/8" 7 1/2" 7 5/8" 7 3/4" 7 7/8" 8" 8 1/8" 8 1/4" 8 3/8" 8 1/2" 8 5/8" 8 3/4" 8 7/8" 9" 9 1/8" 9 1/4" 9 3/8" 9 1/2" 9 5/8" 9 3/4" 9 7/8" 10" 10 1/8" 10 1/4" 10 3/8" 10 1/2" 10 5/8" 10 3/4" 10 7/8" 11" 11 1/8" 11 1/4" 11 3/8" 11 1/2" 11 5/8" 11 3/4" 11 7/8" 12" 12 1/8" 12 1/4" 12 3/8" 12 1/2" 12 5/8" 12 3/4" 12 7/8" 13" 13 1/8" 13 1/4" 13 3/8" 13 1/2" 13 5/8" 13 3/4" 13 7/8" 14" 14 1/8" 14 1/4" 14 3/8" 14 1/2" 14 5/8" 14 3/4" 14 7/8" 15" 15 1/8" 15 1/4" 15 3/8" 15 1/2" 15 5/8" 15 3/4" 15 7/8" 16" 16 1/8" 16 1/4" 16 3/8" 16 1/2" 16 5/8" 16 3/4" 16 7/8" 17" 17 1/8" 17 1/4" 17 3/8" 17 1/2" 17 5/8" 17 3/4" 17 7/8" 18" 18 1/8" 18 1/4" 18 3/8" 18 1/2" 18 5/8" 18 3/4" 18 7/8" 19" 19 1/8" 19 1/4" 19 3/8" 19 1/2" 19 5/8" 19 3/4" 19 7/8" 20" 20 1/8" 20 1/4" 20 3/8" 20 1/2" 20 5/8" 20 3/4" 20 7/8" 21" 21 1/8" 21 1/4" 21 3/8" 21 1/2" 21 5/8" 21 3/4" 21 7/8" 22" 22 1/8" 22 1/4" 22 3/8" 22 1/2" 22 5/8" 22 3/4" 22 7/8" 23" 23 1/8" 23 1/4" 23 3/8" 23 1/2" 23 5/8" 23 3/4" 23 7/8" 24" 24 1/8" 24 1/4" 24 3/8" 24 1/2" 24 5/8" 24 3/4" 24 7/8" 25" 25 1/8" 25 1/4" 25 3/8" 25 1/2" 25 5/8" 25 3/4" 25 7/8" 26" 26 1/8" 26 1/4" 26 3/8" 26 1/2" 26 5/8" 26 3/4" 26 7/8" 27" 27 1/8" 27 1/4" 27 3/8" 27 1/2" 27 5/8" 27 3/4" 27 7/8" 28" 28 1/8" 28 1/4" 28 3/8" 28 1/2" 28 5/8" 28 3/4" 28 7/8" 29" 29 1/8" 29 1/4" 29 3/8" 29 1/2" 29 5/8" 29 3/4" 29 7/8" 30" 30 1/8" 30 1/4" 30 3/8" 30 1/2" 30 5/8" 30 3/4" 30 7/8" 31" 31 1/8" 31 1/4" 31 3/8" 31 1/2" 31 5/8" 31 3/4" 31 7/8" 32" 32 1/8" 32 1/4" 32 3/8" 32 1/2" 32 5/8" 32 3/4" 32 7/8" 33" 33 1/8" 33 1/4" 33 3/8" 33 1/2" 33 5/8" 33 3/4" 33 7/8" 34" 34 1/8" 34 1/4" 34 3/8" 34 1/2" 34 5/8" 34 3/4" 34 7/8" 35" 35 1/8" 35 1/4" 35 3/8" 35 1/2" 35 5/8" 35 3/4" 35 7/8" 36" 36 1/8" 36 1/4" 36 3/8" 36 1/2" 36 5/8" 36 3/4" 36 7/8" 37" 37 1/8" 37 1/4" 37 3/8" 37 1/2" 37 5/8" 37 3/4" 37 7/8" 38" 38 1/8" 38 1/4" 38 3/8" 38 1/2" 38 5/8" 38 3/4" 38 7/8" 39" 39 1/8" 39 1/4" 39 3/8" 39 1/2" 39 5/8" 39 3/4" 39 7/8" 40" 40 1/8" 40 1/4" 40 3/8" 40 1/2" 40 5/8" 40 3/4" 40 7/8" 41" 41 1/8" 41 1/4" 41 3/8" 41 1/2" 41 5/8" 41 3/4" 41 7/8" 42" 42 1/8" 42 1/4" 42 3/8" 42 1/2" 42 5/8" 42 3/4" 42 7/8" 43" 43 1/8" 43 1/4" 43 3/8" 43 1/2" 43 5/8" 43 3/4" 43 7/8" 44" 44 1/8" 44 1/4" 44 3/8" 44 1/2" 44 5/8" 44 3/4" 44 7/8" 45" 45 1/8" 45 1/4" 45 3/8" 45 1/2" 45 5/8" 45 3/4" 45 7/8" 46" 46 1/8" 46 1/4" 46 3/8" 46 1/2" 46 5/8" 46 3/4" 46 7/8" 47" 47 1/8" 47 1/4" 47 3/8" 47 1/2" 47 5/8" 47 3/4" 47 7/8" 48" 48 1/8" 48 1/4" 48 3/8" 48 1/2" 48 5/8" 48 3/4" 48 7/8" 49" 49 1/8" 49 1/4" 49 3/8" 49 1/2" 49 5/8" 49 3/4" 49 7/8" 50" 50 1/8" 50 1/4" 50 3/8" 50 1/2" 50 5/8" 50 3/4" 50 7/8" 51" 51 1/8" 51 1/4" 51 3/8" 51 1/2" 51 5/8" 51 3/4" 51 7/8" 52" 52 1/8" 52 1/4" 52 3/8" 52 1/2" 52 5/8" 52 3/4" 52 7/8" 53" 53 1/8" 53 1/4" 53 3/8" 53 1/2" 53 5/8" 53 3/4" 53 7/8" 54" 54 1/8" 54 1/4" 54 3/8" 54 1/2" 54 5/8" 54 3/4" 54 7/8" 55" 55 1/8" 55 1/4" 55 3/8" 55 1/2" 55 5/8" 55 3/4" 55 7/8" 56" 56 1/8" 56 1/4" 56 3/8" 56 1/2" 56 5/8" 56 3/4" 56 7/8" 57" 57 1/8" 57 1/4" 57 3/8" 57 1/2" 57 5/8" 57 3/4" 57 7/8" 58" 58 1/8" 58 1/4" 58 3/8" 58 1/2" 58 5/8" 58 3/4" 58 7/8" 59" 59 1/8" 59 1/4" 59 3/8" 59 1/2" 59 5/8" 59 3/4" 59 7/8" 60" 60 1/8" 60 1/4" 60 3/8" 60 1/2" 60 5/8" 60 3/4" 60 7/8" 61" 61 1/8" 61 1/4" 61 3/8" 61 1/2" 61 5/8" 61 3/4" 61 7/8" 62" 62 1/8" 62 1/4" 62 3/8" 62 1/2" 62 5/8" 62 3/4" 62 7/8" 63" 63 1/8" 63 1/4" 63 3/8" 63 1/2" 63 5/8" 63 3/4" 63 7/8" 64" 64 1/8" 64 1/4" 64 3/8" 64 1/2" 64 5/8" 64 3/4" 64 7/8" 65" 65 1/8" 65 1/4" 65 3/8" 65 1/2" 65 5/8" 65 3/4" 65 7/8" 66" 66 1/8" 66 1/4" 66 3/8" 66 1/2" 66 5/8" 66 3/4" 66 7/8" 67" 67 1/8" 67 1/4" 67 3/8" 67 1/2" 67 5/8" 67 3/4" 67 7/8" 68" 68 1/8" 68 1/4" 68 3/8" 68 1/2" 68 5/8" 68 3/4" 68 7/8" 69" 69 1/8" 69 1/4" 69 3/8" 69 1/2" 69 5/8" 69 3/4" 69 7/8" 70" 70 1/8" 70 1/4" 70 3/8" 70 1/2" 70 5/8" 70 3/4" 70 7/8" 71" 71 1/8" 71 1/4" 71 3/8" 71 1/2" 71 5/8" 71 3/4" 71 7/8" 72" 72 1/8" 72 1/4" 72 3/8" 72 1/2" 72 5/8" 72 3/4" 72 7/8" 73" 73 1/8" 73 1/4" 73 3/8" 73 1/2" 73 5/8" 73 3/4" 73 7/8" 74" 74 1/8" 74 1/4" 74 3/8" 74 1/2" 74 5/8" 74 3/4" 74 7/8" 75" 75 1/8" 75 1/4" 75 3/8" 75 1/2" 75 5/8" 75 3/4" 75 7/8" 76" 76 1/8" 76 1/4" 76 3/8" 76 1/2" 76 5/8" 76 3/4" 76 7/8" 77" 77 1/8" 77 1/4" 77 3/8" 77 1/2" 77 5/8" 77 3/4" 77 7/8" 78" 78 1/8" 78 1/4" 78 3/8" 78 1/2" 78 5/8" 78 3/4" 78 7/8" 79" 79 1/8" 79 1/4" 79 3/8" 79 1/2" 79 5/8" 79 3/4" 79 7/8" 80" 80 1/8" 80 1/4" 80 3/8" 80 1/2" 80 5/8" 80 3/4" 80 7/8" 81" 81 1/8" 81 1/4" 81 3/8" 81 1/2" 81 5/8" 81 3/4" 81 7/8" 82" 82 1/8" 82 1/4" 82 3/8" 82 1/2" 82 5/8" 82 3/4" 82 7/8" 83" 83 1/8" 83 1/4" 83 3/8" 83 1/2" 83 5/8" 83 3/4" 83 7/8" 84" 84 1/8" 84 1/4" 84 3/8" 84 1/2" 84 5/8" 84 3/4" 84 7/8" 85" 85 1/8" 85 1/4" 85 3/8" 85 1/2" 85 5/8" 85 3/4" 85 7/8" 86" 86 1/8" 86 1/4" 86 3/8" 86 1/2" 86 5/8" 86 3/4" 86 7/8" 87" 87 1/8" 87 1/4" 87 3/8" 87 1/2" 87 5/8" 87 3/4" 87 7/8" 88" 88 1/8" 88 1/4" 88 3/8" 88 1/2" 88 5/8" 88 3/4" 88 7/8" 89" 89 1/8" 89 1/4" 89 3/8" 89 1/2" 89 5/8" 89 3/4" 89 7/8" 90" 90 1/8" 90 1/4" 90 3/8" 90 1/2" 90 5/8" 90 3/4" 90 7/8" 91" 91 1/8" 91 1/4" 91 3/8" 91 1/2" 91 5/8" 91 3/4" 91 7/8" 92" 92 1/8" 92 1/4" 92 3/8" 92 1/2" 92 5/8" 92 3/4" 92 7/8" 93" 93 1/8" 93 1/4" 93 3/8" 93 1/2" 93 5/8" 93 3/4" 93 7/8" 94" 94 1/8" 94 1/4" 94 3/8" 94 1/2" 94 5/8" 94 3/4" 94 7/8" 95" 95 1/8" 95 1/4" 95 3/8" 95 1/2" 95 5/8" 95 3/4" 95 7/8" 96" 96 1/8" 96 1/4" 96 3/8" 96 1/2" 96 5/8" 96 3/4" 96 7/8" 97" 97 1/8" 97 1/4" 97 3/8" 97 1/2" 97 5/8" 97 3/4" 97 7/8" 98" 98 1/8" 98 1/4" 98 3/8" 98 1/2" 98 5/8" 98 3/4" 98 7/8" 99" 99 1/8" 99 1/4" 99 3/8" 99 1/2" 99 5/8" 99 3/4" 99 7/8" 100" 100 1/8" 100 1/4" 100 3/8" 100 1/2" 100 5/8" 100 3/4" 100 7/8" 101" 101 1/8" 101 1/4" 101 3/8" 101 1/2" 101 5/8" 101 3/4" 101 7/8" 102" 102 1/8" 102 1/4" 102 3/8" 102 1/2" 102 5/8" 102 3/4" 102 7/8" 103" 103 1/8" 103 1/4" 103 3/8" 103 1/2" 103 5/8" 103 3/4" 103 7/8" 104" 104 1/8" 104 1/4" 104 3/8" 104 1/2" 104 5/8" 104 3/4" 104 7/8" 105" 105 1/8" 105 1/4" 105 3/8" 105 1/2" 105 5/8" 105 3/4" 105 7/8" 106" 106 1/8" 106 1/4" 106 3/8" 106 1/2" 106 5/8" 106 3/4" 106 7/8" 107" 107 1/8" 107 1/4" 107 3/8" 107 1/2" 107 5/8" 107 3/4" 107 7/8" 108" 108 1/8" 108 1/4" 108 3/8" 108 1/2" 108 5/8" 108 3/4" 108 7/8" 109" 109 1/8" 109 1/4" 109 3/8" 109 1/2" 109 5/8" 109 3/4" 109 7/8" 110" 110 1/8" 110 1/4" 110 3/8" 110 1/2" 110 5/8" 110 3/4" 110 7/8" 111" 111 1/8" 111 1/4" 111 3/8" 111 1/2" 111 5/8" 111 3/4" 111 7/8" 112" 112 1/8" 112 1/4" 112 3/8" 112 1/2" 112 5/8" 112 3/4" 112 7/8" 113" 113 1/8" 113 1/4" 113 3/8" 113 1/2" 113 5/8" 113 3/4" 113 7/8" 114" 114 1/8" 114 1/4" 114 3/8" 114 1/2" 114 5/8" 114 3/4" 114 7/8" 115" 115 1/8" 115 1/4" 115 3/8" 115 1/2" 115 5/8" 115 3/4" 115 7/8" 116" 116 1/8" 116 1/4" 116 3/8" 116 1/2" 116 5/8" 116 3/4" 116 7/8" 117" 117 1/8" 117 1/4" 117 3/8" 117 1/2" 117 5/8" 117 3/4" 117 7/8" 118" 118 1/8" 118 1/4" 118 3/8" 118 1/2" 118 5/8" 118 3/4" 118 7/8" 119" 119 1/8" 119 1/4" 119 3/8" 119 1/2" 119 5/8" 119 3/4" 119 7/8" 120" 120 1/8" 120 1/4" 120 3/8" 120 1/2" 120 5/8" 120 3/4" 120 7/8" 121" 121 1/8" 121 1/4" 121 3/8" 121 1/2" 121 5/8" 121 3/4" 121 7/8" 122" 122 1/8" 122 1/4" 122 3/8" 122 1/2" 122 5/8" 122 3/4" 122 7/8" 123" 123 1/8" 123 1/4" 123 3/8" 123 1/2" 123 5/8" 123 3/4" 123 7/8" 124" 124 1/8" 124 1/4" 124 3/8" 124 1/2" 124 5/8" 124 3/4" 124 7/8" 125" 125 1/8" 125 1/4" 125 3/8" 125 1/2" 125 5/8" 125 3/4" 125 7/8" 126" 126 1/8" 126 1/4" 126 3/8" 126 1/2" 126 5/8" 126 3/4" 126 7/8" 127" 127 1/8" 127 1/4" 127 3/8" 127 1/2" 127 5/8" 127 3/4" 127 7/8" 128" 128 1/8" 128 1/4" 128 3/8" 128 1/2" 128 5/8" 128 3/4" 128 7/8" 129" 129 1/8" 129 1/4" 129 3/8" 129 1/2" 129 5/8" 129 3/4" 129 7/8" 130" 130 1/8" 130 1/4" 130 3/8" 130 1/2" 130 5/8" 130 3/4" 130 7/8" 131" 131 1/8" 131 1/4" 131 3/8" 131 1/2" 131 5/8" 131 3/4" 131 7/8" 132" 132 1/8" 132 1/4" 132 3/8" 132 1/2" 132 5/8" 132 3/4" 132 7/8" 133" 133 1/8" 133 1/4" 133 3/8" 133 1/2" 133 5/8" 133 3/4" 133 7/8" 134" 134 1/8" 134 1/4" 134 3/8" 134 1/2" 134 5/8" 134 3/4" 134 7/8" 135" 135 1/8" 135 1/4" 135 3/8" 135 1/2" 135 5/8" 135 3/4" 135 7/8" 136" 136 1/8" 136 1/4" 136 3/8" 136 1/2" 136 5/8" 136 3/4" 136 7/8" 137" 137 1/8" 137 1/4" 137 3/8" 137 1/2" 137 5/8" 137 3/4" 137 7/8" 138" 138 1/8" 138 1/4" 138 3/8" 138 1/2" 138 5/8" 138 3/4" 138 7/8" 139" 139 1/8" 139 1/4" 139 3/8" 139 1/2" 139 5/8" 139 3/4" 139 7/8" 140" 140 1/8" 140 1/4" 140 3/8" 140 1/2" 140 5/8" 140 3/4" 140 7/8" 141" 141 1/8" 141 1/4" 141 3/8" 141 1/2" 141 5/8" 141 3/4" 141 7/8" 142" 142 1/8" 142 1/4" 142 3/8" 142 1/2" 142 5/8" 142 3/4" 142 7/8" 143" 143 1/8" 143 1/4" 143 3/8" 143 1/2" 143 5/8" 143 3/4" 143 7/8" 144" 144 1/8" 144 1/4" 144 3/8" 144 1/2" 144 5/8" 144 3/4" 144 7/8" 145" 145 1/8" 145 1/4" 145 3/8" 145 1/2" 145 5/8" 145 3/4" 145 7/8" 146" 146 1/8" 146 1/4" 146 3/8" 146 1/2" 146 5/8" 146 3/4" 146 7/8" 147" 147 1/8" 147 1/4" 147 3/8" 147 1/2" 147 5/8" 147 3/4" 147 7/8" 148" 148 1/8" 148 1/4" 148 3/8" 148 1/2" 148 5/8" 148 3/4" 148 7/8" 149" 149 1/8" 149 1/4" 149 3/8" 149 1/2" 149 5/8" 149 3/4" 149 7/8" 150" 150 1/8" 150 1/4" 150 3/8" 150 1/2" 150 5/8" 150 3/4" 150 7/8" 151" 151 1/8" 151 1/4" 151 3/8" 151 1/2" 151 5/8" 151 3/4" 151 7/8" 152" 152 1/8" 152 1/4" 152 3/8" 152 1/2" 152 5/8" 152 3/4" 152 7/8" 153" 153 1/8" 153 1/4" 153 3/8" 153 1/2" 153 5/8" 153 3/4" 153 7/8" 154" 154 1/8" 154 1/4" 154 3/8" 154 1/2" 154 5/8" 154 3/4" 154 7/8" 155" 155 1/8" 155 1/4" 155 3/8" 155 1/2" 155 5/8" 155 3/4" 155 7/8" 156" 156 1/8" 156 1/4" 156 3/8" 156 1/2" 156 5/8" 156 3/4" 156 7/8" 157" 157 1/8" 157 1/4" 157 3/8" 157 1/2" 157 5/8" 157 3/4" 157 7/8" 158" 158 1/8" 158 1/4" 158 3/8" 158 1/2" 158 5/8" 158 3/4" 158 7/8" 159" 159 1/8" 159 1/4" 159 3/8" 159 1/2" 159 5/8" 159 3/4" 159 7/8" 160" 160 1/8" 160 1/4" 160 3/8" 160 1/2" 160 5/8" 160 3/4" 160 7/8" 161" 161 1/8" 161 1/4" 161 3/8" 161 1/2" 161 5/8" 161 3/4" 161 7/8" 162" 162 1/8" 162 1/4" 162 3/8" 162 1/2" 162 5/8" 162 3/4" 162 7/8" 163" 163 1/8" 163 1/4" 163 3/8" 163 1/2" 163 5/8" 163 3/4" 163 7/8" 164" 164 1/8" 164 1/4" 164 3/8" 164 1/2" 164 5/8" 164 3/4" 164 7/8" 165" 165 1/8" 165 1/4" 165 3/8" 165 1/2" 165 5/8" 165 3/4" 165 7/8" 166" 166 1/8" 166 1/4" 166 3/8" 166 1/2" 166 5/8" 166 3/4" 166 7/8" 167" 167 1/8" 167 1/4" 167 3/8" 167 1/2" 167 5/8" 167 3/4" 167 7/8" 168" 168 1/8" 168 1/4" 168 3/8" 168 1/2" 168 5/8" 168 3/4" 168 7/8" 169" 169 1/8" 169 1/4" 169 3/8" 169 1/2" 169 5/8" 169 3/4" 169 7/8" 170" 170 1/8" 170 1/4" 170 3/8" 170 1/2" 170 5/8" 170 3/4" 170 7/8" 171" 171 1/8" 171 1/4" 171 3/8" 171 1/2" 171 5/8" 171 3/4" 171 7/8" 172" 172 1/8" 172 1/4" 172 3/8" 172 1/2" 172 5/8" 172 3/4" 172 7/8" 173" 173 1/8" 173 1/4" 173 3/8" 173 1/2" 173 5/8" 173 3/4" 173 7/8" 174" 174 1/8" 174 1/4" 174 3/8" 174 1/2" 174 5/8" 174 3/4" 174 7/8" 175" 175 1/8" 175 1/4" 175 3/8" 175 1/2" 175 5/8" 175 3/4" 175 7/8" 176" 176 1/8" 176 1/4" 176 3/8" 176 1/2" 176 5/8" 176 3/4" 176 7/8" 177" 177 1/8" 177 1/4" 177 3/8" 177 1/2" 177 5/8" 177 3/4" 177 7/8" 178" 178 1/8" 178 1/4" 178 3/8" 178 1/2" 178 5/8" 178 3/4" 178 7/8" 179" 179 1/8" 179 1/4" 179 3/8" 179 1/2" 179 5/8" 179 3/4" 179 7/8" 180" 180 1/8" 180 1/4" 180 3/8" 180 1/2" 180 5/8" 180 3/4" 180 7/8" 181" 181 1/8" 181 1/4" 181 3/8" 181 1/2" 181 5/8" 181 3/4" 181 7/8" 182" 182 1/8" 182 1/4" 182 3/8" 182 1/2" 182 5/8" 182 3/4" 182 7/8" 183" 183 1/8" 183 1/4" 183 3/8" 183 1/2" 183 5/8" 183 3/4" 183 7/8" 184" 184 1/8" 184 1/4" 184 3/8" 184 1/2" 184 5/8" 184 3/4" 184 7/8" 185" 185 1/8" 185 1/4" 185 3/8" 185 1/2" 185 5/8" 185 3/4" 185 7/8" 186" 186 1/8" 186 1/4" 186 3/8" 186 1/2" 186 5/8" 186 3/4" 186 7/8" 187" 187 1/8" 187 1/4" 187 3/8" 187 1/2" 187 5/8" 187 3/4" 187 7/8" 188" 188 1/8" 188 1/4" 188 3/8"





CAUTION  
DO NOT TOUCH THE CONTACT SURFACES OF THE TERMINALS.  
THE CONTACT SURFACES OF THE TERMINALS ARE VERY HOT.  
TO PREVENT BURNS, DO NOT TOUCH THE CONTACT SURFACES OF THE TERMINALS.  
DO NOT TOUCH THE CONTACT SURFACES OF THE TERMINALS.  
DO NOT TOUCH THE CONTACT SURFACES OF THE TERMINALS.  
DO NOT TOUCH THE CONTACT SURFACES OF THE TERMINALS.

WARNING  
USE THE PROPER MOUNTING BRACKET AND BOLTS.  
DO NOT USE METAL BRACKET OR BOLTS.  
DO NOT USE METAL BRACKET OR BOLTS.  
DO NOT USE METAL BRACKET OR BOLTS.  
DO NOT USE METAL BRACKET OR BOLTS.

ALERT/ASSESSMENT  
DO NOT TOUCH THE CONTACT SURFACES OF THE TERMINALS.  
DO NOT TOUCH THE CONTACT SURFACES OF THE TERMINALS.  
DO NOT TOUCH THE CONTACT SURFACES OF THE TERMINALS.  
DO NOT TOUCH THE CONTACT SURFACES OF THE TERMINALS.  
DO NOT TOUCH THE CONTACT SURFACES OF THE TERMINALS.

RE



Do Not Remove

21850D6C-1F



Intertek  
4004590



### CAUTION

HOT SURFACES-TO REDUCE THE RISK OF BURNS-DO NOT TOUCH.  
RISK OF ELECTRIC SHOCK-WHEN THE PHOTOVOLTAIC ARRAY IS EXPOSED TO LIGHT, IT SUPPLIES A DC VOLTAGE TO EQUIPMENT. COVER PV MODULE WITH OPAQUE MATERIAL BEFORE CONNECTING OR DISCONNECTING THIS OPTIMIZER.  
DURING FAULT,ZERO CURRENT IS SOURCED INTO DC ARRAY BY CONVERTER.

### WARNING

ELECTRIC SHOCK HAZARD. THE DC CONDUCTORS OF THIS PHOTOVOLTAIC SYSTEM ARE UNGROUNDED AND MAY BE ENERGIZED.

### AVERTISSEMENT

RISQUE DE CHOC ELECTRIQUE: QUAND LE CHAMP PHOTOVOTAIQUE EST EXPOSE A LA LUMIERE, UNE TENSION CC EST FOURNIE A CET EQUIPEMENT.  
SURFACES CHAUDES: NE PAS TOUCHER, AFIN DE REDUIRE LES RISQUES DE BRULURES LE COURANT DE RETOUR INJECTE PAR LE CONVERTISSEUR EN CAS DE DEFAILLANCE DANS LE MODULE PV EST TOUJOURS NUL.



600V Sun Res -40°C VW-1 HongLin



















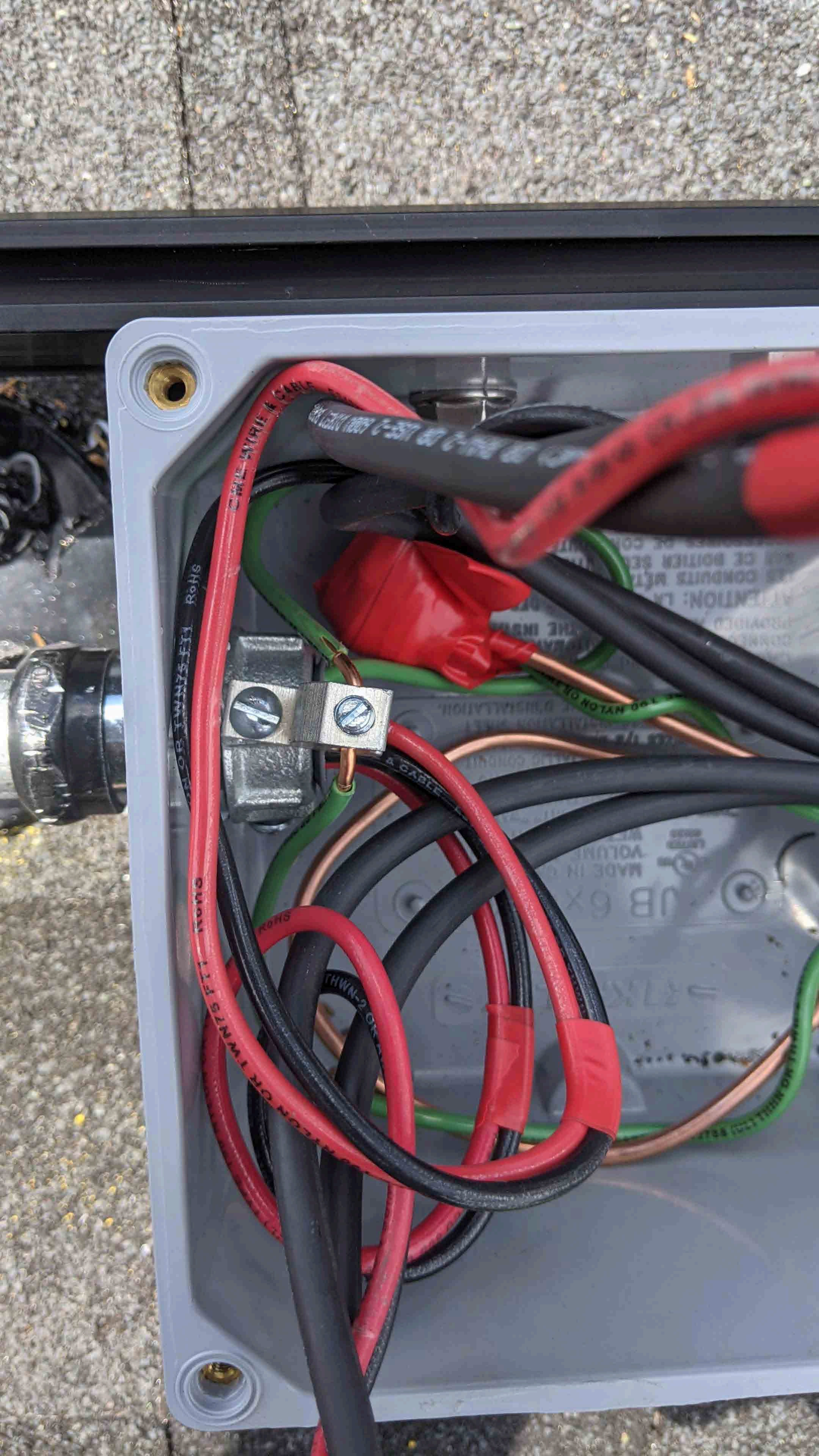


105°C Dry and 90°C Wet  
600V  
Sun  
Res









ORANGE WIRE & CABLE

ROHS COMPLIANT



ORANGE WIRE & CABLE

ORANGE WIRE & CABLE

ATTENTION: THE  
CONDUITS WITH  
THE INSULATION  
PROVIDED  
SHOULD BE USED  
FOR THE INSTALLATION  
OF THE BOILER  
AND THE CONDENSATE  
PUMP.

MADE IN  
CHINA  
VOLUME  
UB 6X













ENGINEERED, DESIGNED AND QUALITY TESTED BY Q CELLS IN GERMANY

# Q.PEAK DUO BLK-G8+ 340

## Q CELLS

### PERFORMANCE AT STANDARD TEST CONDITIONS\*

Nominal Power* (+5W/-0W)	$P_{MPP}$	[W]	340
Short circuit current*	$I_{SC}$	[A]	10.40
Open circuit voltage*	$V_{OC}$	[V]	40.70
Current at maximum power	$I_{MPP}$	[A]	9.90
Voltage at maximum power	$V_{MPP}$	[V]	34.34
Maximum system voltage	$V_{SYS}$	[V]	1000(IEC) 1000(UL)
Weight	M	[kg / lbs]	19.9 / 43.9

Made in Korea



**DANGER!**  
Risk of electric shock!  
DO NOT connect or disconnect plug contacts while system is under load current. Refer to the Installation and Operation Manual before installing, operating or servicing this unit.

**DANGER!**  
**Risque de choc électrique!**  
NE PAS connecter ou déconnecter les connecteurs lorsque le système est en charge. Consultez le manuel d'installation et d'utilisation avant installation, utilisation et entretien du produit.

Fire Rating: Class C / Type 2  
Design load: 55 lbs/ft<sup>2</sup>  
Fuse Rating: 20 A  
For field connections, use minimum No.12 AWG copper wires insulated for a minimum of 90 °C

U.S. Patent No. 9,893,215 (solar cells)

EMAIL [service@q-cells.com](mailto:service@q-cells.com)  
WEB [www.q-cells.com](http://www.q-cells.com)

\*Measurement tolerances:  $P_{MPP} \pm 3\%$ ;  $I_{SC}$ ,  $V_{OC} \pm 5\%$  at STC: 1000 W/m<sup>2</sup>, 25 ± 2 °C, AM 1.5 according to IEC 60904-3. Data given are rated (nominal) values.



Serial No. 825321075399600639



Hanwha Solutions Corporation, 1329 Daegeum-ro, Geumwang-eup, Eumseong-gun, Chungcheongbuk-do, Republic of Korea, 27632  
Q CELLS is a brand of Hanwha Solutions Corporation





 **WARNING**

**DUAL POWER SUPPLY**

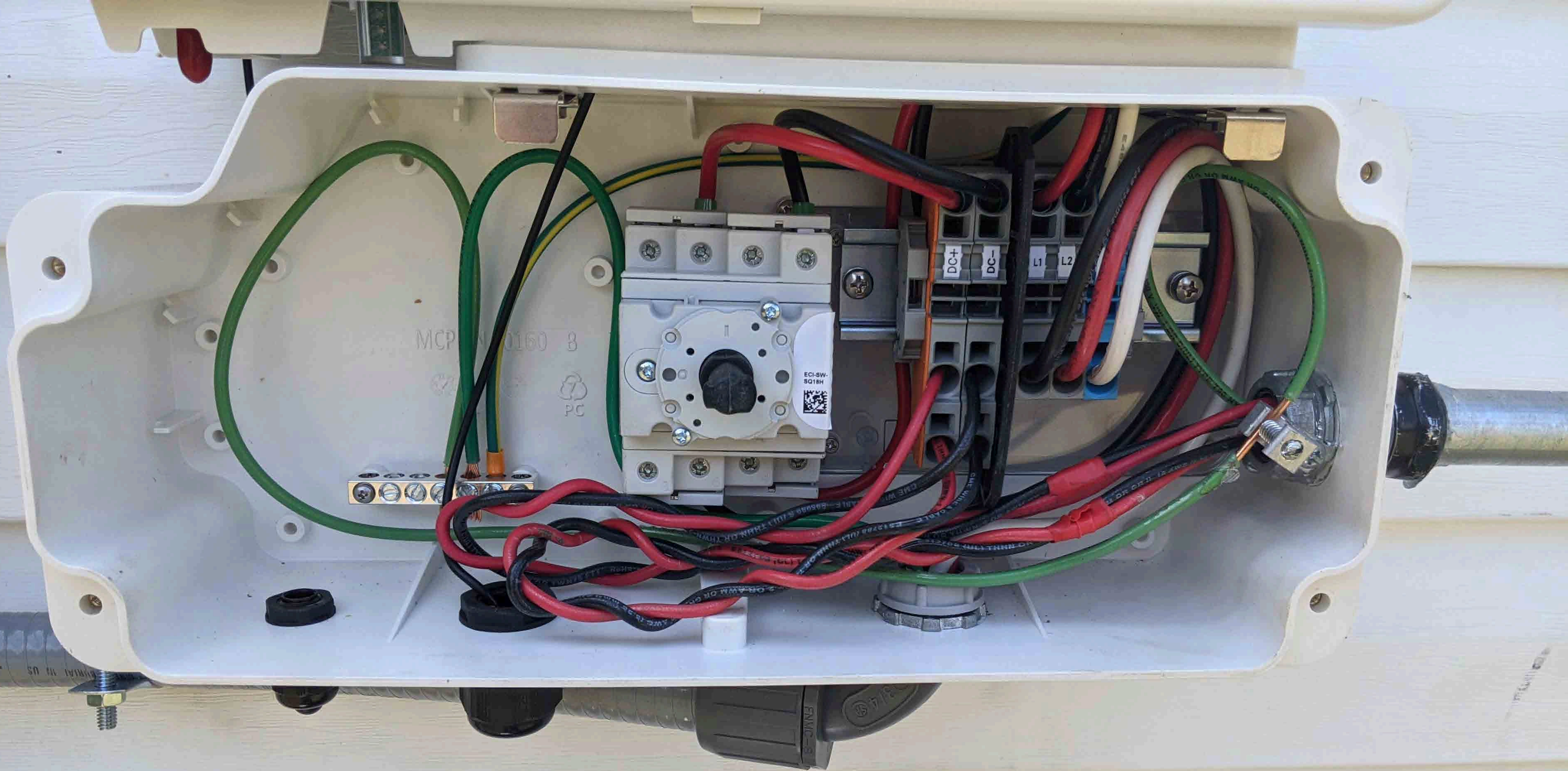
**SOURCES: UTILITY GRID AND  
PV SOLAR ELECTRIC SYSTEM**

pvlabeis.com

05-211

PV DISCONNECT LOCATED OUTSIDE  
AT SOUTHEASTERN CORNER











MCP-E 0160 B

