

ARC SHIELD PROTECTION PARA A800
BLINDAGE D'ARC

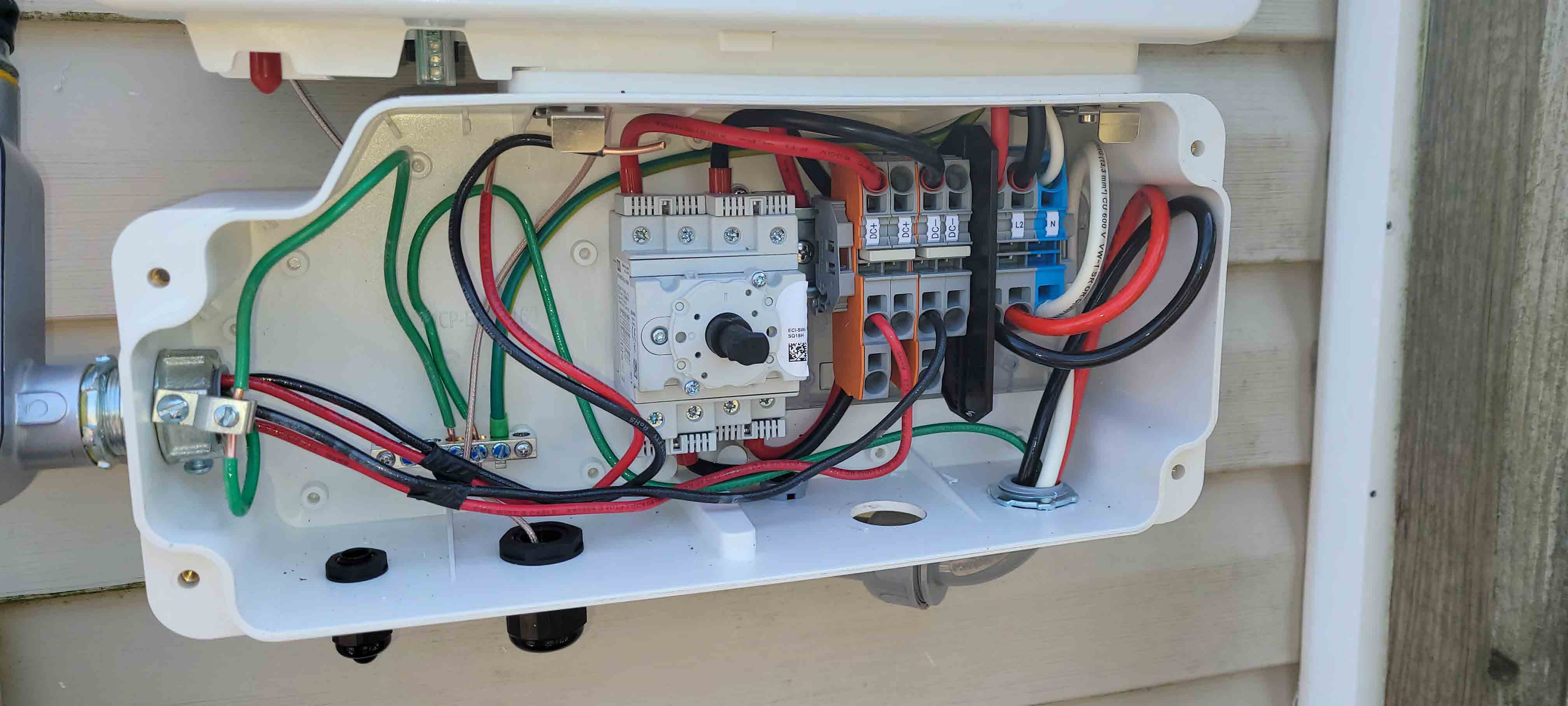
Ferraz Shawmut
Tri-Onic®
TR60R
C1027067
60A
250V AC
DUAL-ELEMENT
TIME-DELAY
Mersen

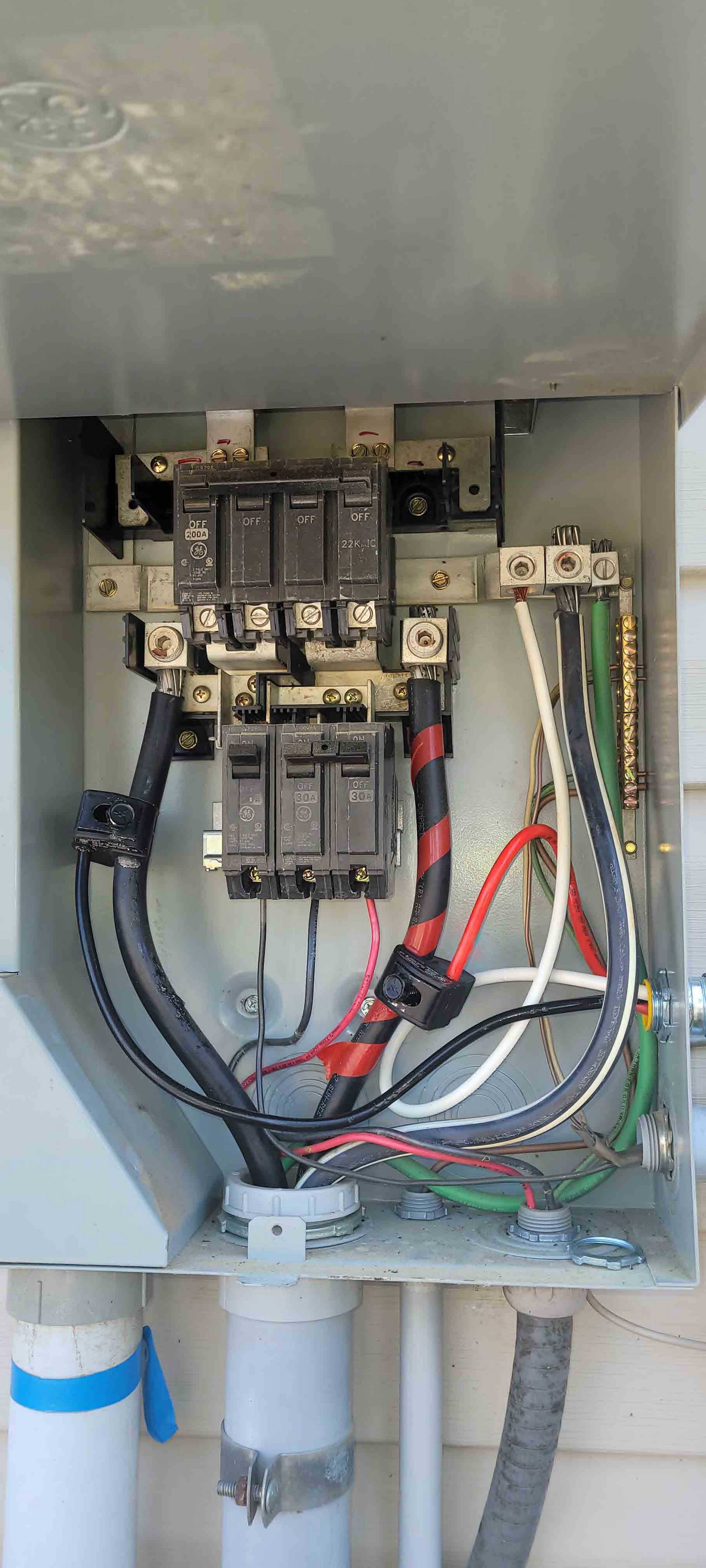
Ferraz Shawmut
Tri-Onic®
TR60R
C1027067
60A
250V AC
DUAL-ELEMENT
TIME-DELAY
Mersen

Chart
separa
ment

SEE DISCONNECT









WARNING
DUAL POWER SUPPLY
ADVANCED UTILITY GRID AND
PV SOLAR ELECTRIC SYSTEM

**SOLAR PV SYSTEM EQUIPPED
WITH RAPID SHUTDOWN**

**RAPID SHUTDOWN
SWITCH FOR
SOLAR PV SYSTEM**

**EMERGENCY
DISCONNECT**

solar edge JHD active

WARNING
DO NOT TOUCH
INTERNAL COMPONENTS
OR WIRING
**EMERGENCY
DISCONNECT**

WARNING: PHOTOVOLTAIC



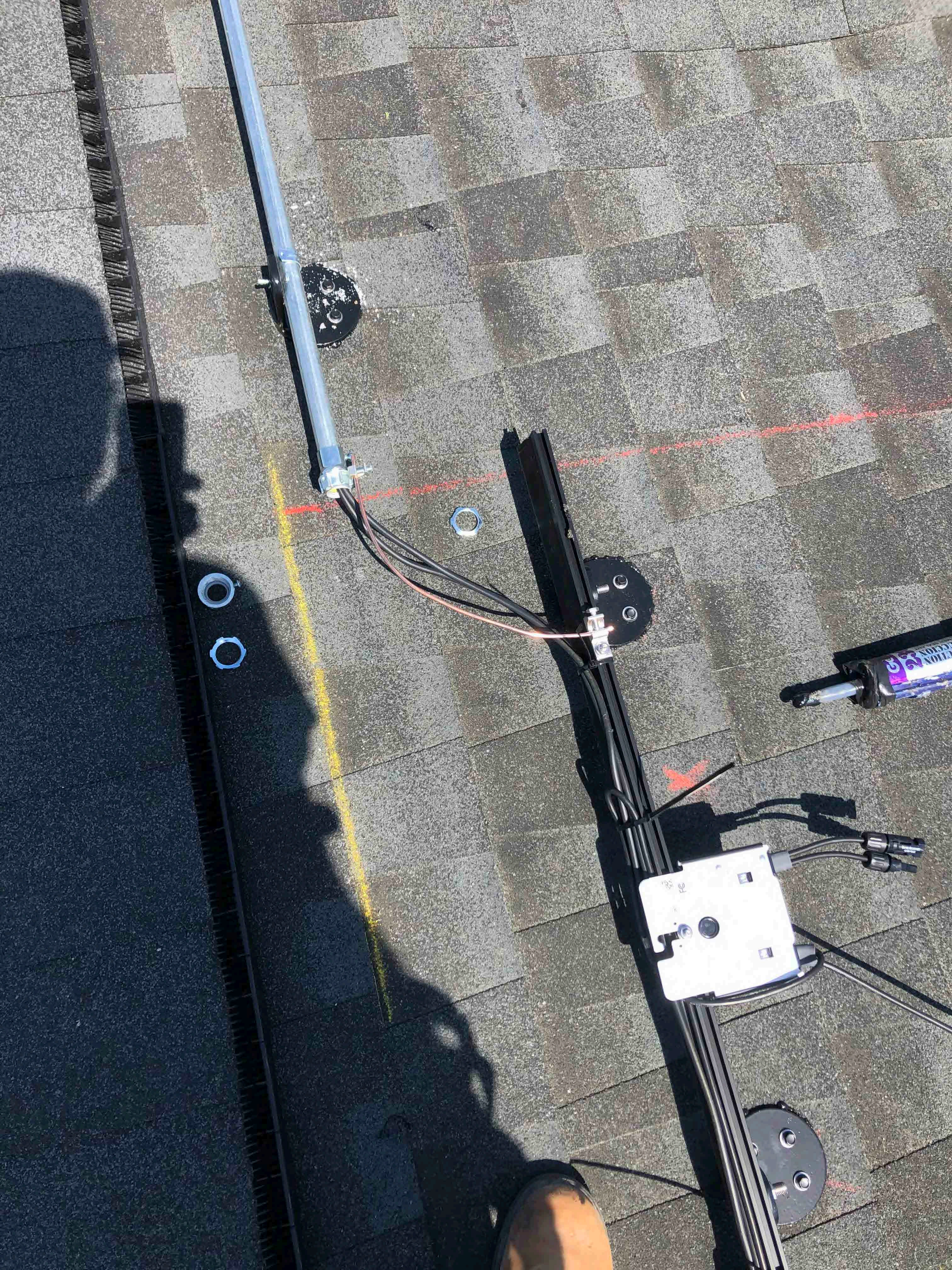






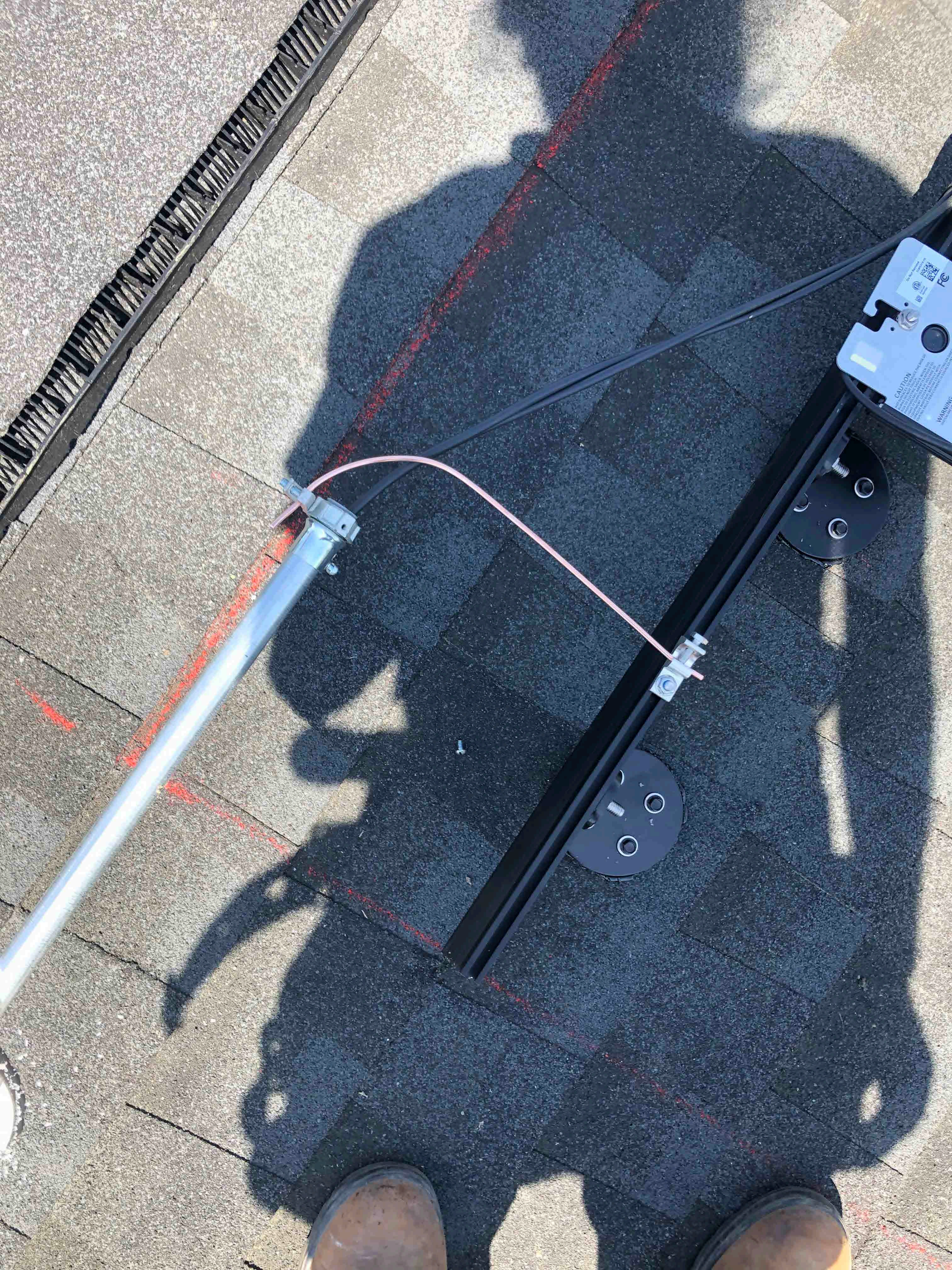




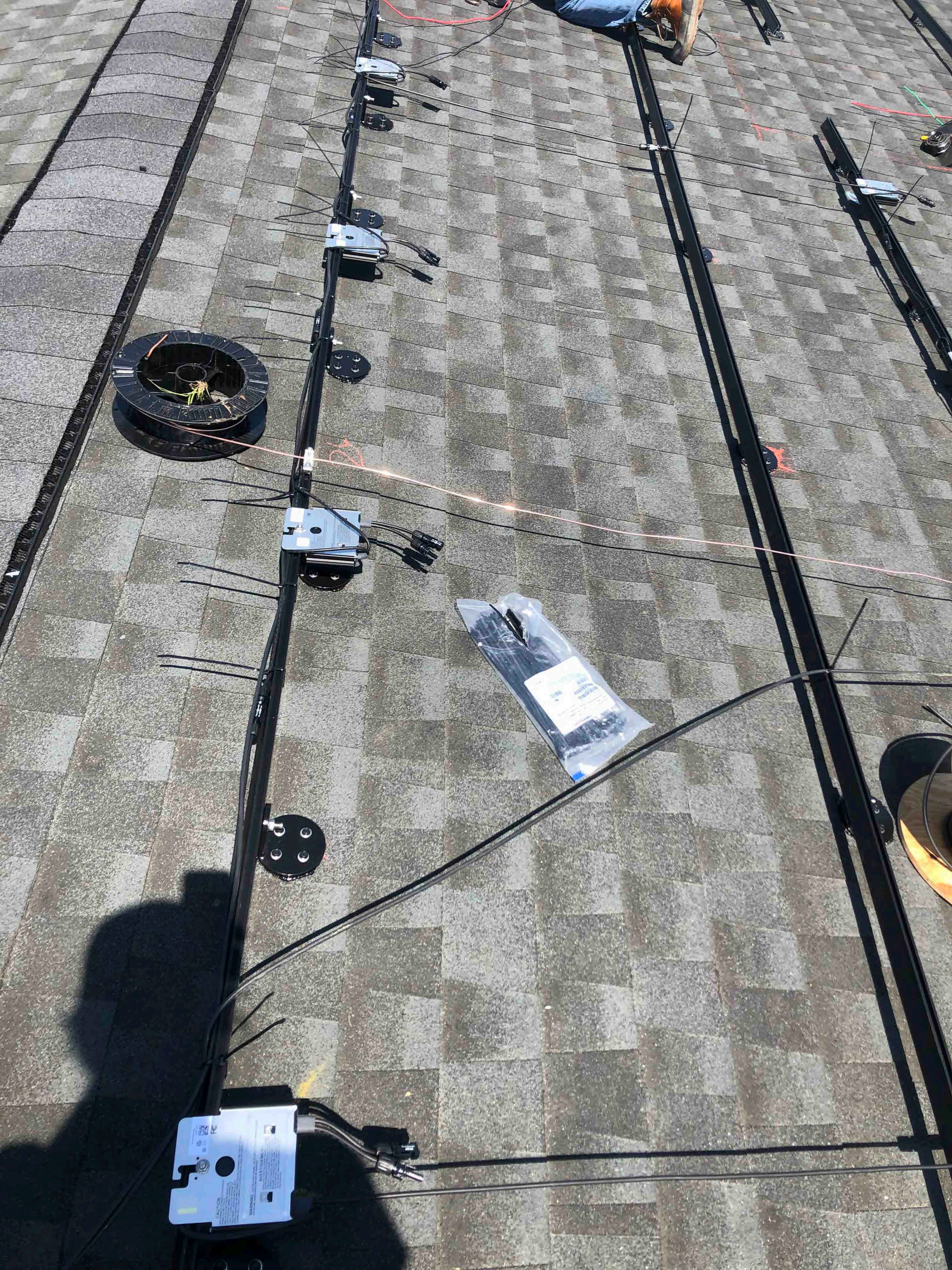








CAUTION
WARNING

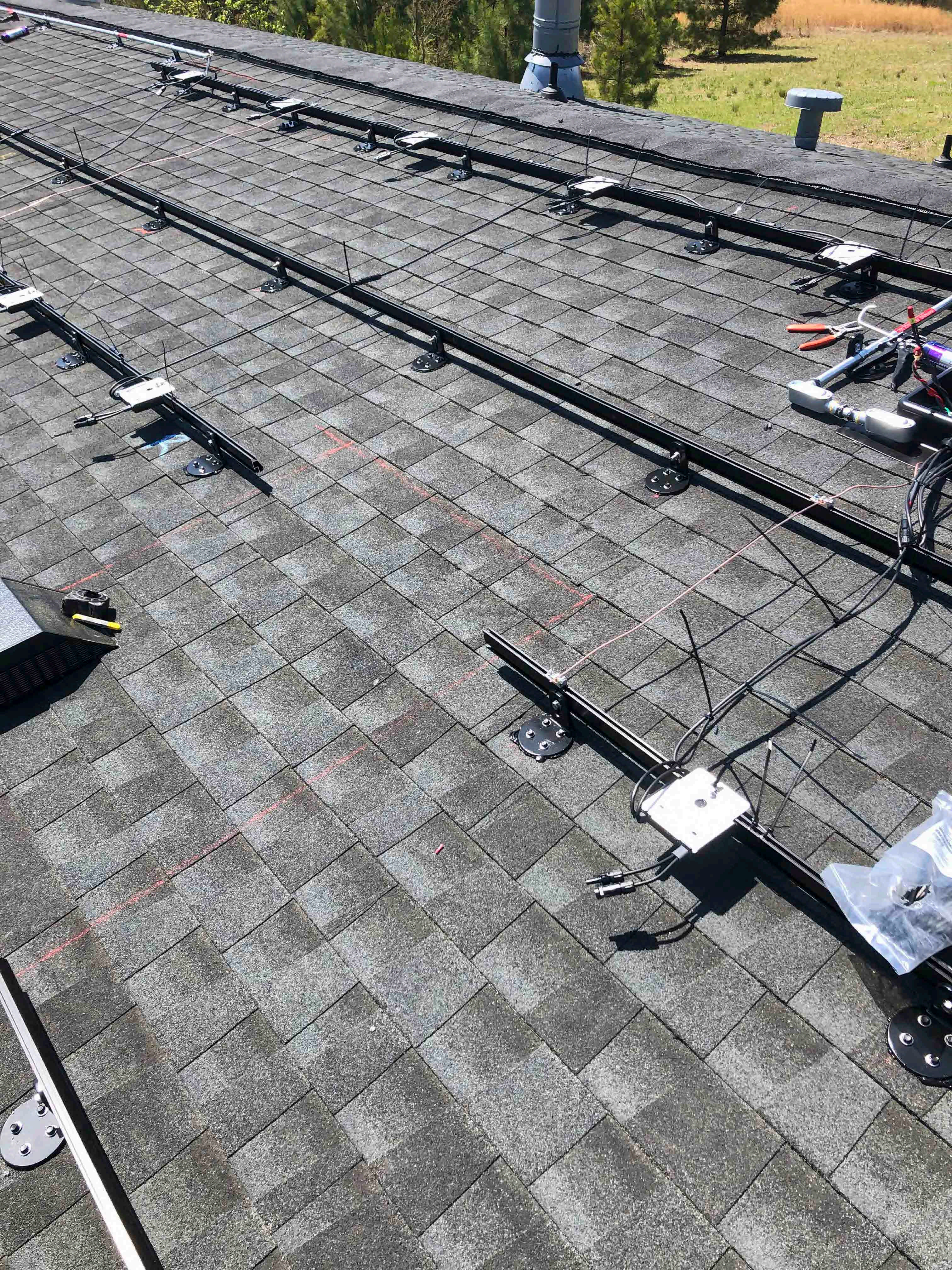


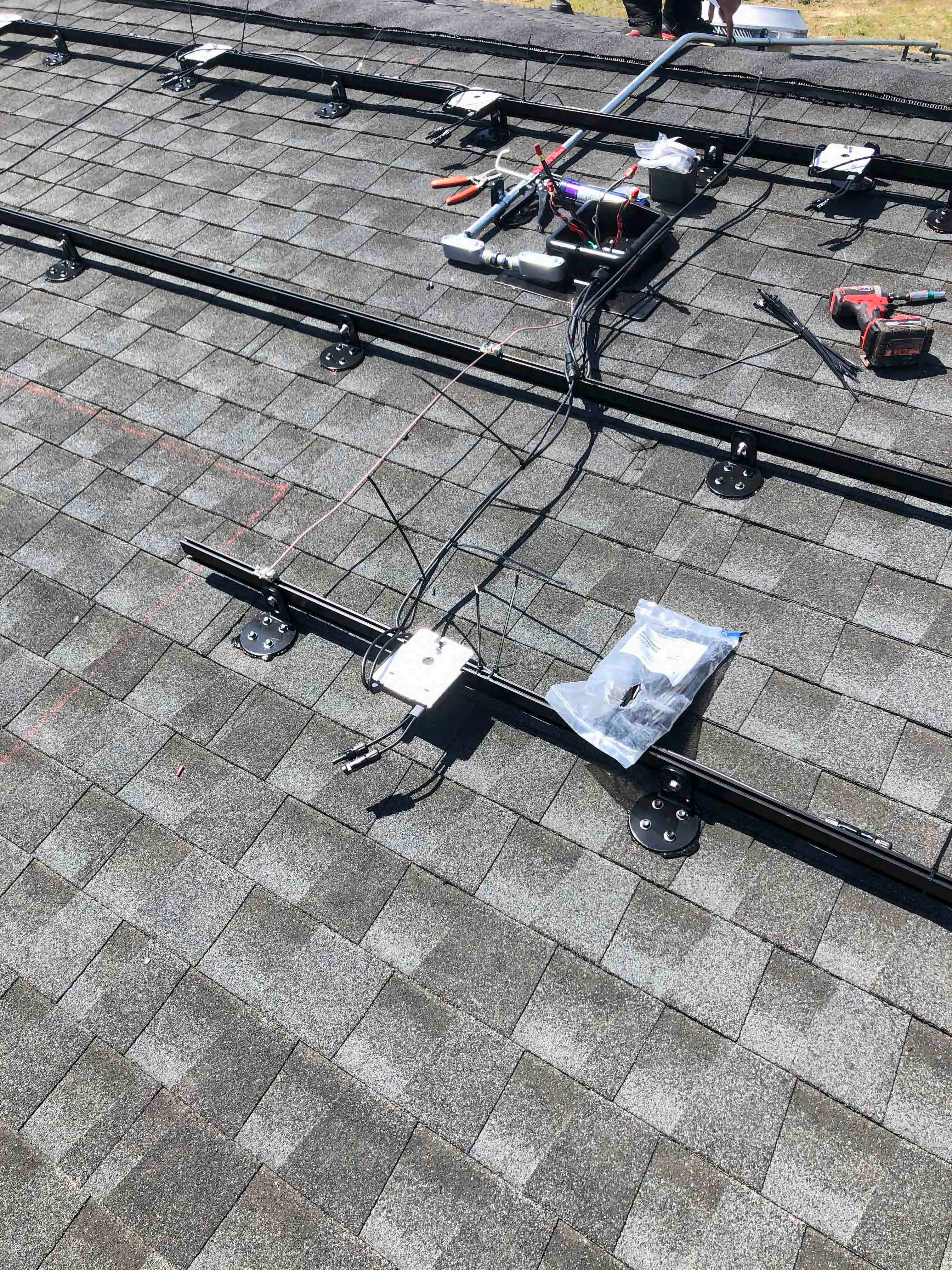
22

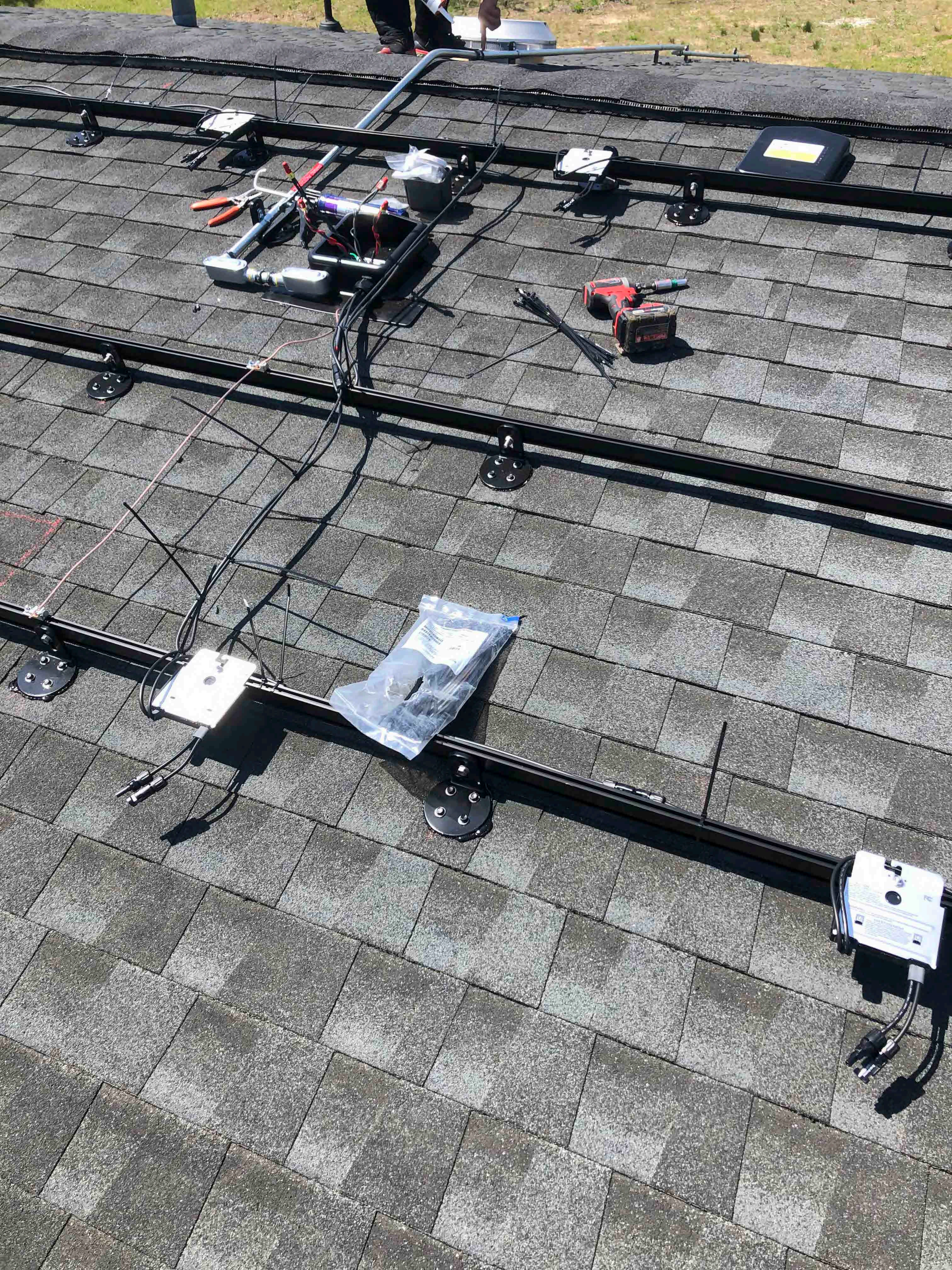
22

















WARNING: PHOTOVOLTAIC POWER SOURCE

Dural
SELLADOR TRIPOLIMERO
Formulado para sellado de Construcción y Roturas Aplicaciones
Formulacione para Construcción de Tejas

WARNING
AVERTISSEMENT



203321032530200284

ENGINEERED, DESIGNED AND QUALITY TESTED BY Q CELLS IN GE

Q.PEAK DUO BLK-G6+ 340

PERFORMANCE AT STANDARD TEST CONDITIONS*

Nominal Power* (+5W/-0W)	P _{MPP}	[W]	340
Short circuit current*	I _{SC}	[A]	10.52
Open circuit voltage*	V _{OC}	[V]	40.66
Current at maximum power	I _{MPP}	[A]	10.02
Voltage at maximum power	V _{MPP}	[V]	33.94
Maximum system voltage	V _{sys}	[V]	1000(UL)
Weight	M	[kg/lbs]	19.9, 43.8

*Measurement tolerances: P_{MPP} ± 3%; I_{sc}, V_{oc} ± 5% at STC: 1000W/m², 25 ± 2 °C, AM 1.5 according to IEC 60904-3. Data given are rated (nominal) values.



203321032530200284

Hanwha Q CELLS USA Inc.,
300 Nexus Drive, Dalton GA 30721, USA



Assembled in USA



DANGER!
Risk of electric shock!
DO NOT connect or disconnect
circuit contacts while system is
under load current. Refer to the
Installation and Operation Manual
before installing, operating or
servicing this unit.

DANGER!
Risque de choc électrique
NE PAS connecter ou déconnecter
les connecteurs lorsque
le système est en charge.
Consultez le manuel d'installation
et d'utilisation avant installation,
utilisation et entretien du produit.

Fire Rating: Class C / Type 2
Design load: 55 lbs/ft²
Fuse Rating: 20 A
For field connections, use
minimum No.12 AWG copper
wires insulated for a minimum
of 90 °C

U.S. Patent No. 9,893,215
(solar cells)

EMAIL service@q-cells.com
WEB www.q-cells.com