



REC Alpha Black Series
REC360AA Black
 Serial Number: FBB-4007475739

Phone: +65 6495 9228
 www.recgroup.com

Power Output (Pmax)	360 W
Watt Class Sorting	0/+5 W
Power Production Tolerance	+/- 3 %
Rated Voltage (Vmpp)	36.7 V
Rated Current (Impp)	9.82 A
Open Circuit Voltage (Voc) (+/- 3%)	43.9 V
Short Circuit Current (Isc) (+/- 3%)	10.49 A
Maximum System Voltage (Vsys)	1000 V
Maximum Series Fuse (DC) (UL)	25 A
Maximum Series Fuse (DC) (IEC)	25 A
Design Load (Safety Factor 1.5)	+4666 Pa*
Maximum Test Load	+7000 Pa / -4000 Pa*

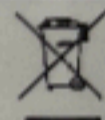
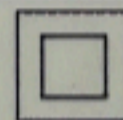
(Values at STC: 1000 W/m² AM 1.5, cell temp 25°C)



UL Fire Rating Type 2*



IEC 61215
 IEC 61730



Application Class: Safety Class II

See installation manual for *) mechanical installation requirements and
 +) installation requirements to achieve a specified system fire class

Manufactured: 02.09.2020

Warning electrical hazard. This module produces electricity when exposed to light. Follow all applicable electricity safety precautions. Only qualified personnel should install or perform maintenance work on the module. Be aware of dangerous high DC voltage when connecting or disconnecting modules. Do not damage or scratch the rear surface of the module. Do not handle or install modules when they are wet. Refer to installation and operation manuals before installing, servicing or operating this unit.

Avertissement: Risque de choc électrique. Ce module solaire produit de l'électricité lorsqu'il est exposé à la lumière. Respecter toutes les précautions de sécurité applicables. L'installation, la mise en service, l'entretien et la réparation du module, doivent être réalisés que par du personnel qualifié. Attention aux éléments sous haute-tension CC pendant la connexion ou déconnexion des modules. Eviter d'endommager la surface arrière du module avec des objets pointus. Ne pas manipuler ni installer les modules s'ils sont humides. Référez vous au manuel d'installation avant l'installation, l'entretien ou l'opération de cet unité.

For field connections, use min. 4 mm²(12 AWG) UL PV wires insulated for a min. of 90°C

CAUTION: DO NOT DISCONNECT UNDER LOAD
ATTENTION: NE PAS DECONNECTER SOUS TENSION

Made in Singapore by REC SOLAR PTE. LTD.
 20 TUAS SOUTH AVENUE 14, SINGAPORE 637312, SINGAPORE



 **ENPHASE**®

IQ 7

IQ 7 Grid Support Interactive Inverter
For Enphase patent information, refer to:
<http://enphase.com/company/patents/>

Power Factor Range: +/- 0.85

DC input range: 16 - 48V

Max. input short-circuit current: 15A

Max. input continuous current: 10A

AC output voltages: 208 / 240V

AC output currents: 1.15 / 1.0A

AC output frequency: 60Hz

AC output power (max. continuous): 240VA

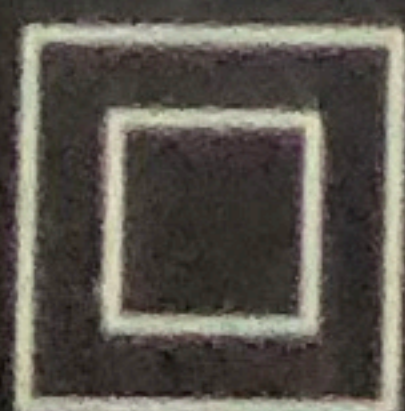
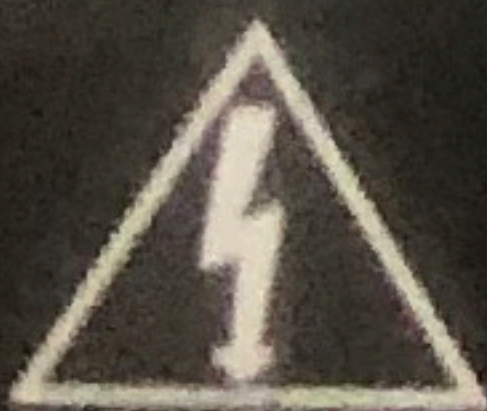
Operating temperature: -40°C to +65°C

Ingress protection: NEMA Type 6

Photovoltaic Rapid Shutdown Equipment

NEC 690.12 and C22.1-2015 Rule 64-218

UL1741 SA Compliant | Assembled in China



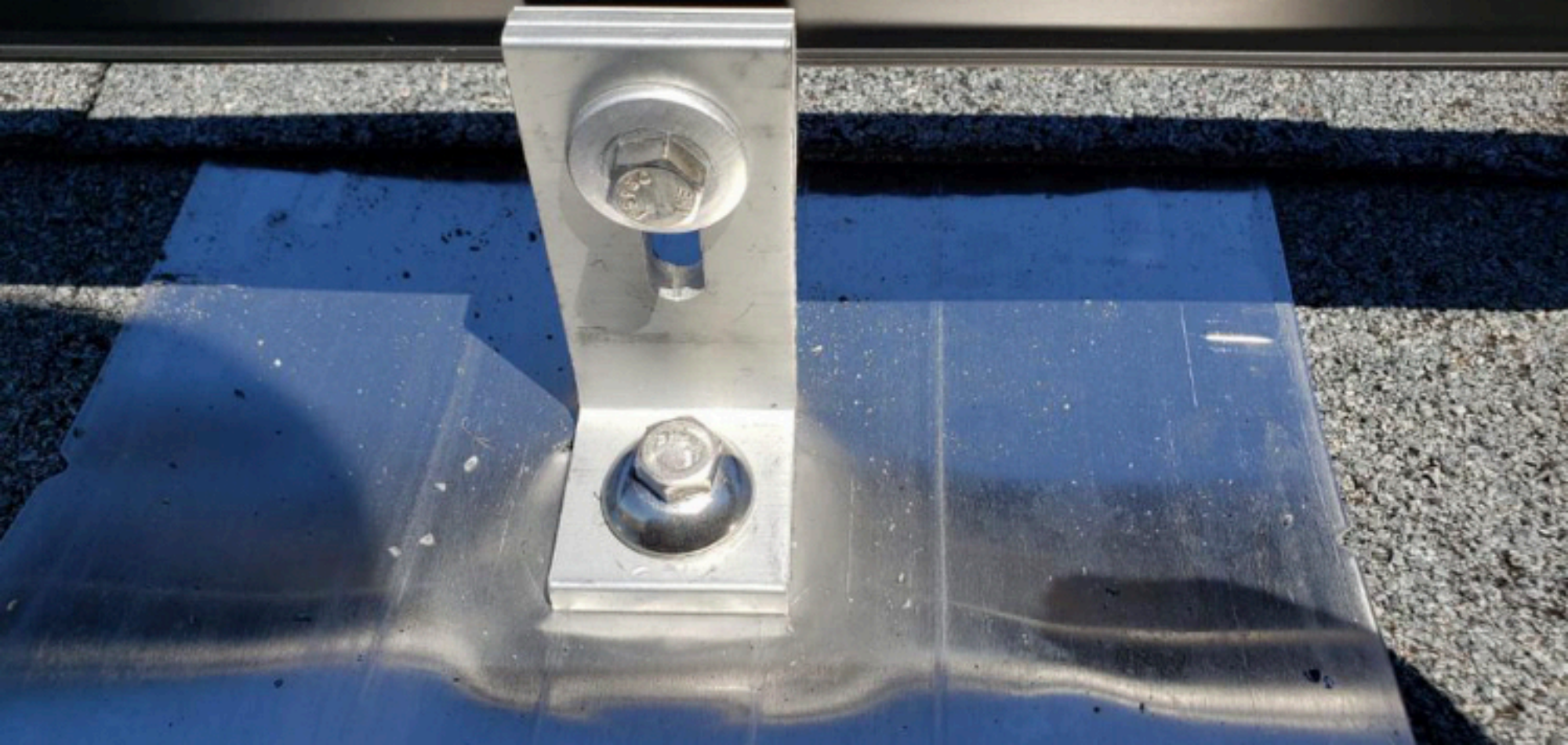
This device complies with part 15 of the FCC Rules. Operation is subject to the following two conditions: (1) This device may not cause harmful interference. (2) This device must accept any interference received, including interference that may cause undesired operation.



CAUTION: RISK OF SHOCK. WARRANTY VOID IF COVER REMOVED. NO USER SERVICEABLE PARTS INSIDE. REFER SERVICING TO QUALIFIED SERVICE PERSONNEL.

WARNING: ELECTRIC SHOCK HAZARD. DC CONDUCTORS OF THIS PHOTOVOLTAIC SYSTEM ARE UNGROUNDED AND MAY BE ENERGIZED. AC AND DC VOLTAGE SOURCES TERMINATE INSIDE THIS EQUIPMENT. DISCONNECT BOTH BEFORE SERVICING. PHOTOVOLTAIC ARRAY SUPPLIES A DC VOLTAGE TO THIS EQUIPMENT WHEN EXPOSED TO LIGHT. HOT SURFACES: TO AVOID THE RISK OF BURNS - DO NOT TOUCH.

ATTENTION: RISQUE D'ELECTROCUTION. LES CONDUCTEURS CC DE CE SYSTEME PHOTOVOLTAÏQUE NE SONT PAS RELIES A LA TERRE ET PEUVENT ETRE ENERGISES. DES SOURCES DE TENSION CA ET CC SONT CONNECTEES A CET APPAREIL. ISOLER LES DEUX SOURCES AVANT TOUTE INTERVENTION. LES CABLES COURANT CONTINU SONT SOUS TENSION LORSQUE LE CHAMP PHOTOVOLTAÏQUE EST EXPOSE A LA LUMIERE. RISQUE DE BRULURE, NE PAS TOUCHER.







Scott E. Wyssling, PE, PP, CME

Scott E. Wyssling, PE
76 North Meadowbrook Drive
Alpine, UT 84004
office (201) 874-3483
swyssling@wysslingconsulting.com

March 25, 2021

Sigora Solar
1222 Harris Street
Charlottesville, VA 22903

**SCOTT E
WYSSLING, PE**



Re: Engineering Services (Post Installation)
Lutz Residence
398 Valley Oak Drive, Bunnlevel NC
9.360 kW System Size

To Whom it May Concern:

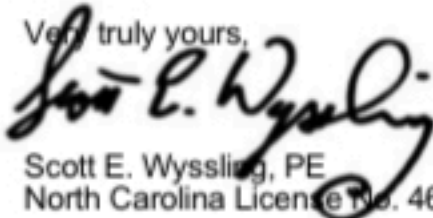
Pursuant to your request, we have reviewed the post installation photos for the above referenced solar panel installation. As you are aware, this office initially prepared a structural assessment of the proposed solar panel installation, the adequacy of the connections for this system and identified maximum spacing of the connections. The photographs show panel support locations and spacing which conform to our structural assessment. Acceptable minor changes to the layout include; the panel positions support spacing less than the maximum, and/or additions or deletions of panels at roof locations.

Based upon the site specific information provided by Sigora Solar, our office certifies that the structural installation for this roof was in general conformance to our structural assessment report dated December 15, 2020, the SnapNRack product installation criteria, and the layout plan as specified in our report. This letter pertains only to the panel support attachments to the roof framing and not the engineered photovoltaic panel products, components, panel positioning, or electrical related installations/connections.

This certification is based on applicable building codes. The installation is in compliance with the 2018 North Carolina Residential Code Book, professional engineering assessment and judgment and covers this dwellings assessment for solar panel connections and support only.

Should you have any questions regarding the above or if you require additional information do not hesitate to contact me.

Very truly yours,


Scott E. Wyssling, PE
North Carolina License No. 46546



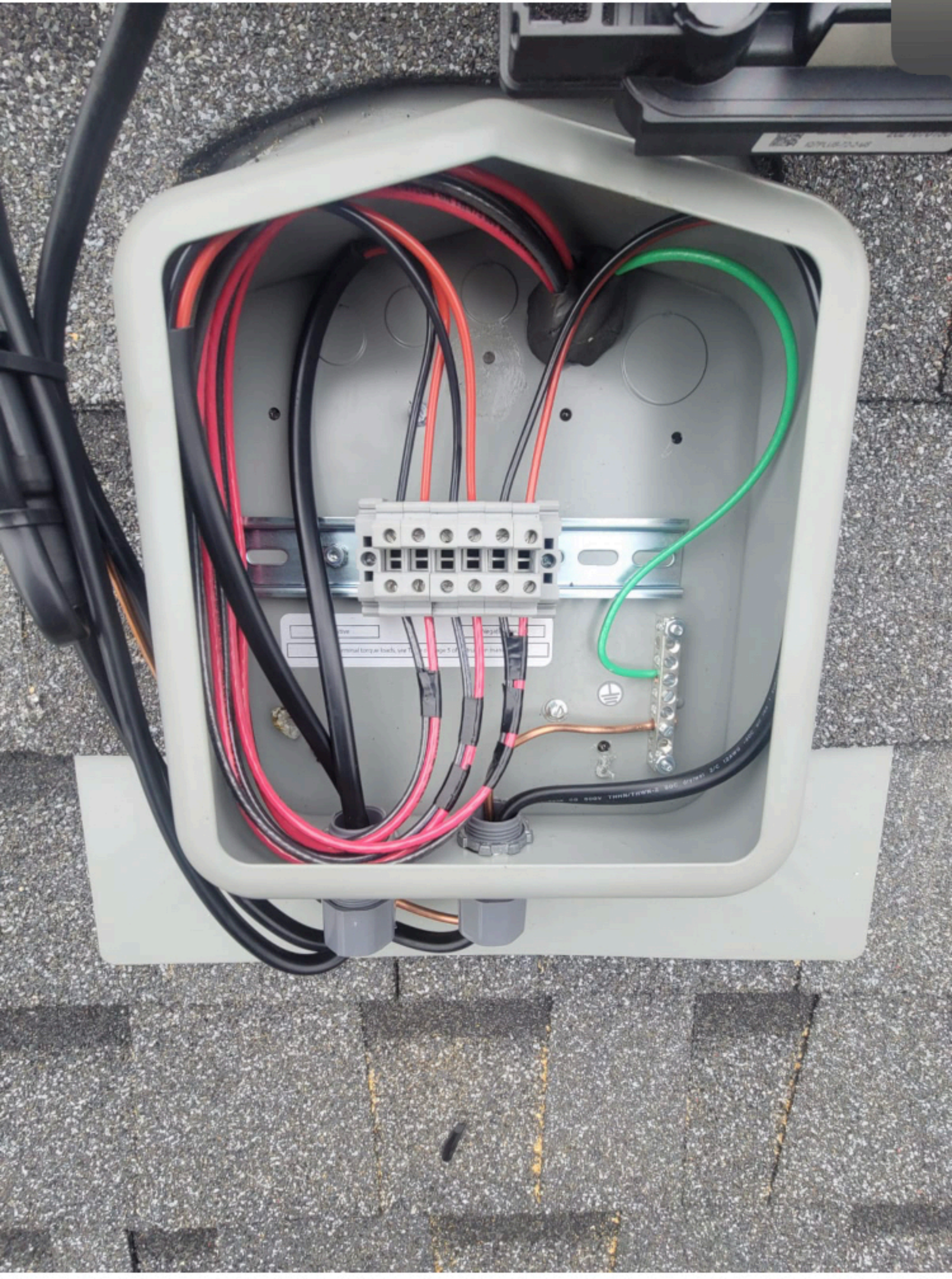
North Carolina Firm License No. 46546














SOLADECK 

www.soladeck.com

Model: 840-00368-14
 250VAC 25A
 +75°C 20332

Maximum Ratings: 1500 VAC/150 AMP/ 480 VAC/50 AMP

<input type="checkbox"/> 0799 Series	<input type="checkbox"/> 8799 E-Series	<input type="checkbox"/> 0796-4340
--------------------------------------	--	------------------------------------

⚠ WARNING
 Read all instructions before use.
 This device is not to be used in wet or damp locations.
 Do not touch the terminals or the device when it is energized.
 Do not use the device if it is damaged or if it is not working properly.
 Do not use the device if it is not working properly.
 Do not use the device if it is not working properly.

⚠ AVERTISSEMENT
 Lire attentivement les instructions avant utilisation.
 Ce dispositif n'est pas à utiliser dans des endroits humides ou humides.
 Ne pas toucher les bornes ou le dispositif lorsqu'il est sous tension.
 Ne pas utiliser le dispositif s'il est endommagé ou s'il ne fonctionne pas correctement.
 Ne pas utiliser le dispositif s'il ne fonctionne pas correctement.
 Ne pas utiliser le dispositif s'il ne fonctionne pas correctement.

840-00368-14
 PATENT NO. US 7,220,818

