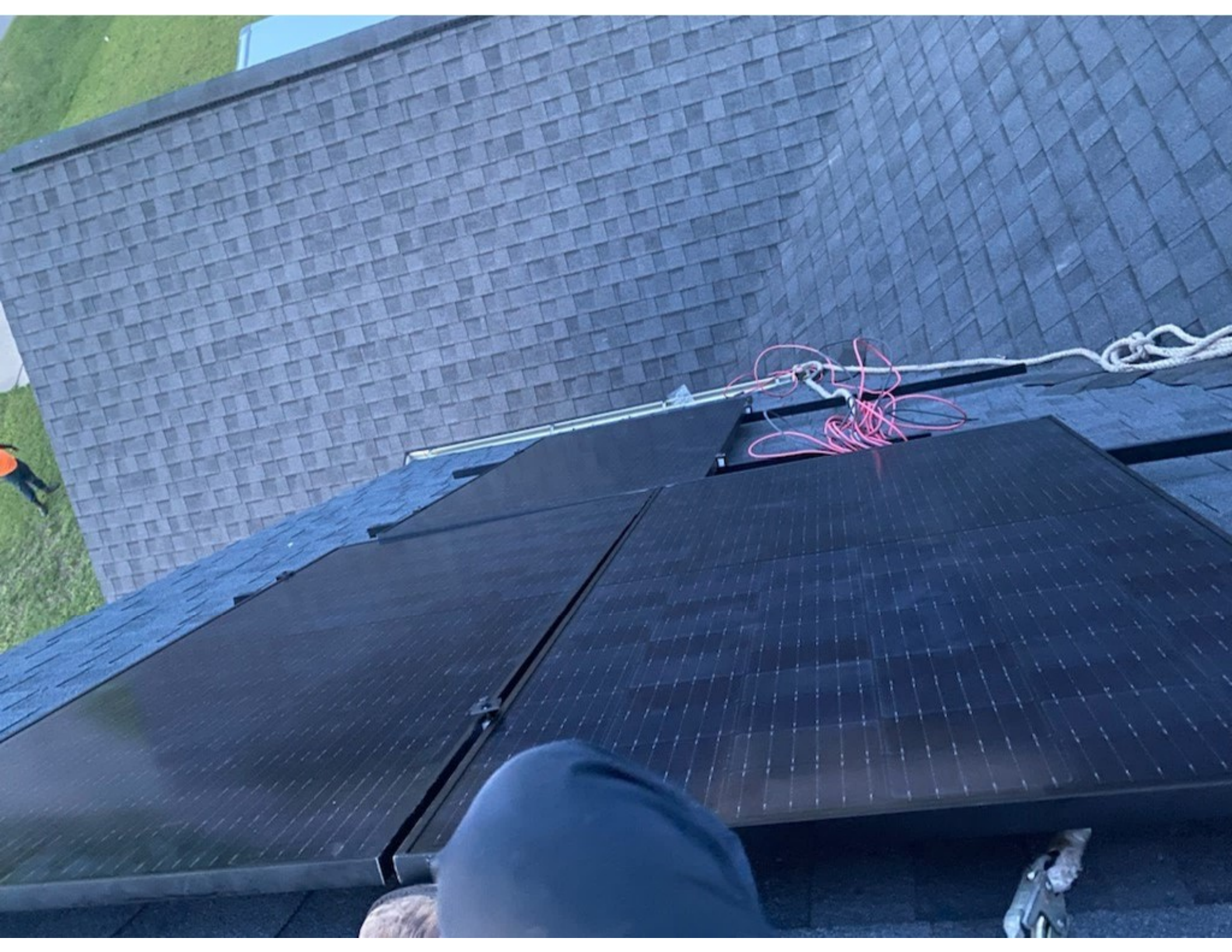
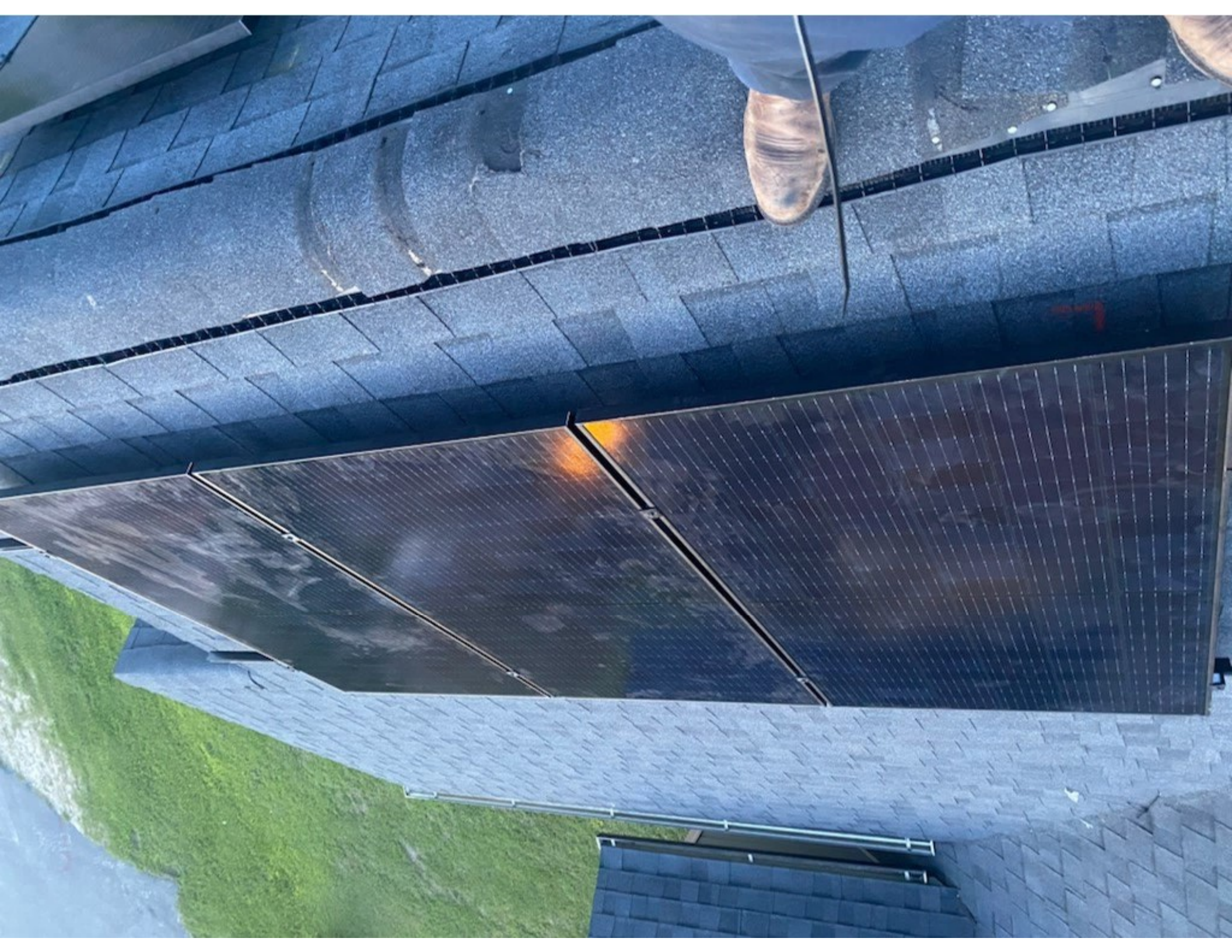




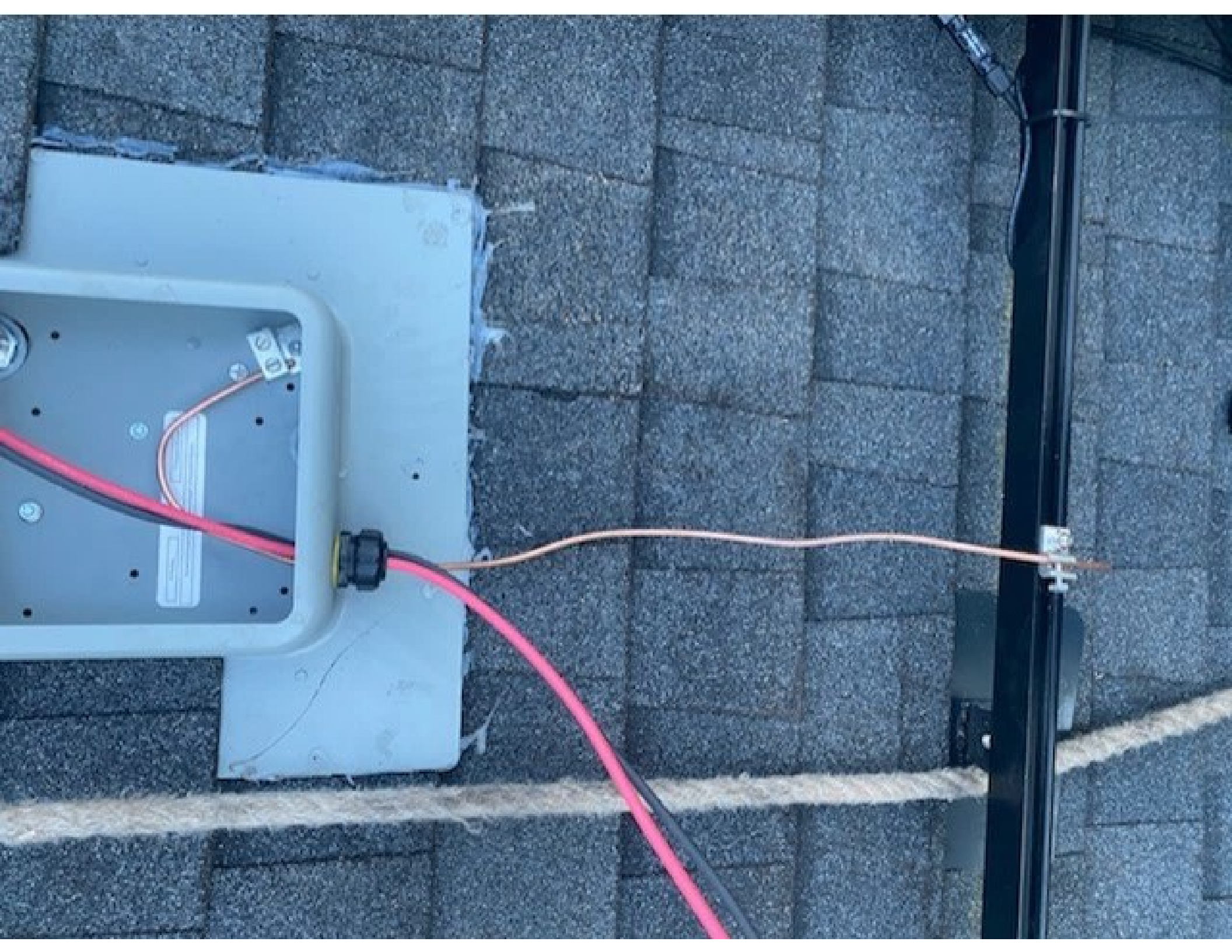


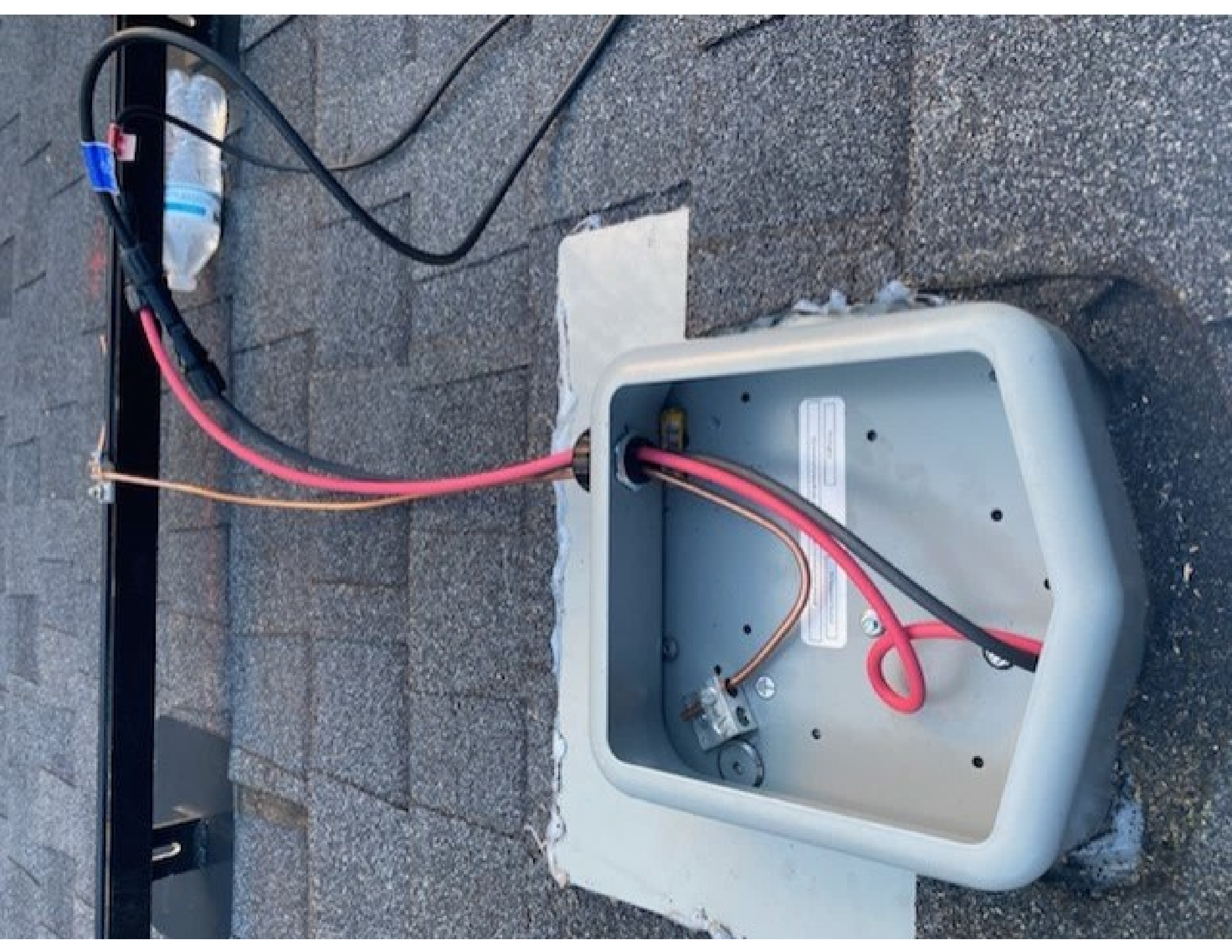
GENERAC  
PV Link / S2502  
PV Combiner 10PV











**ENSURE MUST BE GROUNDED**  
communication

RCP: 0001000390B1  
S/N: S2502-37493  
MFG: B  
Date: Q2-20



PEBI

# GENERAC® PV Link

SnapRS™ compatible  
PV rapid shutdown S

## IMPORTANT INSTALLATION INSTRUCTIONS:



**Input:**  
Max 420Vdc  
SINGLE  
Dual stri...

**Output:**  
Connect PV  
terminals in

PVRSS Controlled Conductor Connection Port  
Refer to instructions for conditions of use

DC Manogrid

**WARNING:** ELECTRIC SHOCK HAZARD. THE DC CONDUCTORS OF THIS PHOTOVOLTAIC INVERTER ARE NOT TO BE TOUCHED OR SHORTED. ALWAYS USE PROPER LOCKING AND TAGGING PROCEDURES TO PREVENT ACCIDENTAL RE-ENERGIZATION OF THE SYSTEM.  
**CAUTION:** RISK OF ELECTRIC SHOCK. THE DC CONDUCTORS OF THIS PHOTOVOLTAIC INVERTER ARE NOT TO BE TOUCHED OR SHORTED. ALWAYS USE PROPER LOCKING AND TAGGING PROCEDURES TO PREVENT ACCIDENTAL RE-ENERGIZATION OF THE SYSTEM.



ENCLOSURE MUST BE GROUNDED  
for REbus communication



RCP: 00010003926E  
S/N: S2502-37938  
MFG: B  
Date: 02-20



**GENERAC**

**PV Link / S2502**

SnapRS™ compatible substring optimizer  
PV rapid shutdown system equipment



REBUS DC N  
OUTP

PVRS Controlled Conduct  
Refer to instructions for

**IMPORTANT INSTALLATION INSTRUCTIONS:**



**Input:**  
Max 420V temperature corrected  $V_{oc}$   
SINGLE STRING INPUT  
Dual string input requires approval.

**Output:**  
Connect PV Links to inverter REBus

