

PV Pos

PV Negative/Neutral

For terminal to loads, see Table on page of Instruction manual

PATENT PENDING

PV SUN RES 400 F



SOLARDECK
WARNING: PHOTOVOLTAIC POWER SOURCE

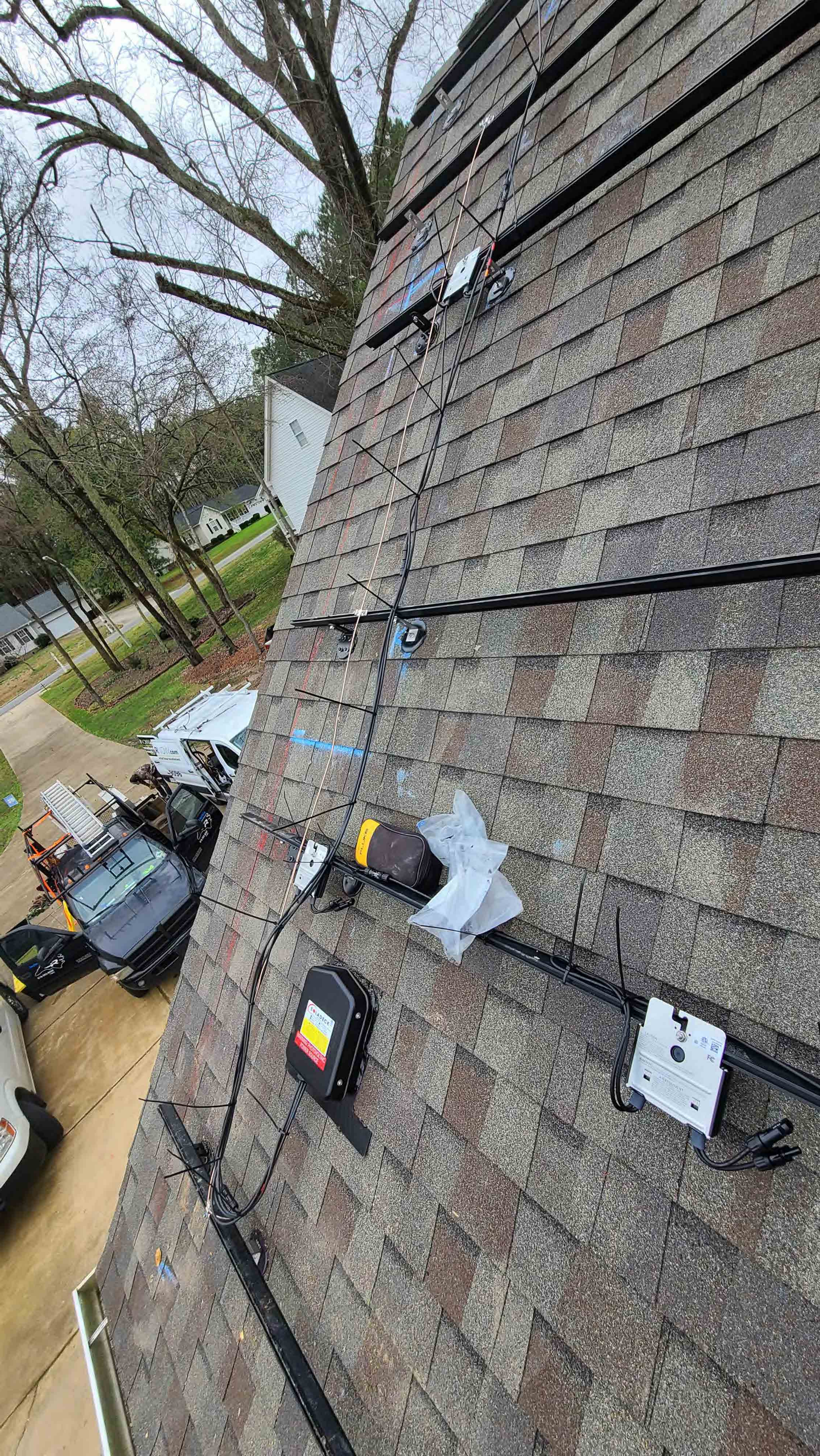
CAUTION
DO NOT TOUCH TERMINALS OR WIRING
IF YOU ARE NOT A QUALIFIED ELECTRICIAN
OR PHOTOVOLTAIC SPECIALIST, DO NOT
ATTEMPT TO REPAIR OR REPLACE ANY
COMPONENTS OF THIS SYSTEM.
WARNING: PHOTOVOLTAIC PANELS CAN BE
DANGEROUSLY HOT TO THE TOUCH.
AVOID CONTACT WITH PHOTOVOLTAIC
PANELS TO PREVENT BURNS.
AVERTISSEMENT
NE PAS TOUCHER LES TERMINAUX NI LE
CÂBLAGE
SI VOUS N'ÊTES PAS UN ÉLECTRICIEN
QUALIFIÉ OU UN SPÉCIALISTE EN
PHOTOVOLTAÏQUE, NE PAS
ESSAYER DE RÉPARER OU DE
REMPLACER AUCUN COMPOSANT DE
CE SYSTÈME.

Form No. 100-1000-0000
© 2010 SolarDeck
DC Combiner Box
100-1000-0000











2 3 FT 8 IN INCHES 4 25FT 5 6 7 8 9 P.R. APP'D 2547c 10 11 12 13 14 15 16 17 18 19 20

Do not disconnect under load



Do Not Remove
211CA79E-E2
ETL
Listed for
310649300
FC

CAUTION
HOT SURFACES-TO REDUCE THE RISK OF BURNS DO NOT TOUCH.
RISK OF ELECTRIC SHOCK WHEN THE PHOTOVOLTAIC ARRAY IS EXPOSED TO LIGHT. IT SUPPLIES A DC VOLTAGE TO EQUIPMENT. COVER PV MODULE WITH OPAQUE MATERIAL BEFORE CONNECTING OR DISCONNECTING THIS OPTIMIZER. DURING FAULT, ZERO CURRENT IS SOURCED INTO DC ARRAY BY CONVERTER.

WARNING ELECTRIC SHOCK HAZARD. THE DC CONDUCTORS OF THIS PHOTOVOLTAIC SYSTEM ARE UNGROUNDED AND MAY BE ENERGIZED.

AVERTISSEMENT
RISQUE DE CHOC ELECTRIQUE. QUAND LE CHAMP PHOTOVOLTAIQUE EST EXPOSE A LA LUMIERE, UNE TENSION CC EST FOURNIE A CET EQUIPEMENT. REDUIRE LES RISQUES DE BRULURES LE COURANT DE RETOUR INJECTE PAR LE CONVERTISSEUR EN CAS DE DE FAILLANCE DANS LE MODULE PV EST TOUJOURS NUL.

Do Not Remove
213C947D-6E



Intertek
4004590



FC

CAUTION

HOT SURFACES-TO REDUCE THE RISK OF BURNS-DO NOT TOUCH. RISK OF ELECTRIC SHOCK-WHEN THE PHOTOVOLTAIC ARRAY IS EXPOSED TO LIGHT, IT SUPPLIES A DC VOLTAGE TO EQUIPMENT. COVER PV MODULE WITH OPAQUE MATERIAL BEFORE CONNECTING OR DISCONNECTING THIS OPTIMIZER. DURING FAULT, ZERO CURRENT IS SOURCED INTO DC ARRAY BY CONVERTER.



WARNING ELECTRIC SHOCK HAZARD. THE DC CONDUCTORS OF THIS PHOTOVOLTAIC SYSTEM ARE UNGROUNDED AND MAY BE ENERGIZED.



AVERTISSEMENT

RISQUE DE CHOC ELECTRIQUE: QUAND LE CHAMP PHOTOVOLTAIQUE EST EXPOSE A LA LUMIERE, UNE TENSION CC EST FOURNIE A CET EQUIPEMENT. SURFACES CHAUDES: NE PAS TOUCHER, AFIN DE REDUIRE LES RISQUES DE BRULURES LE COURANT DE RETOUR INJECTE PAR LE CONVERTISSEUR EN CAS DE DEFAILLANCE DANS LE MODULE PV EST TOUJOURS NUL.



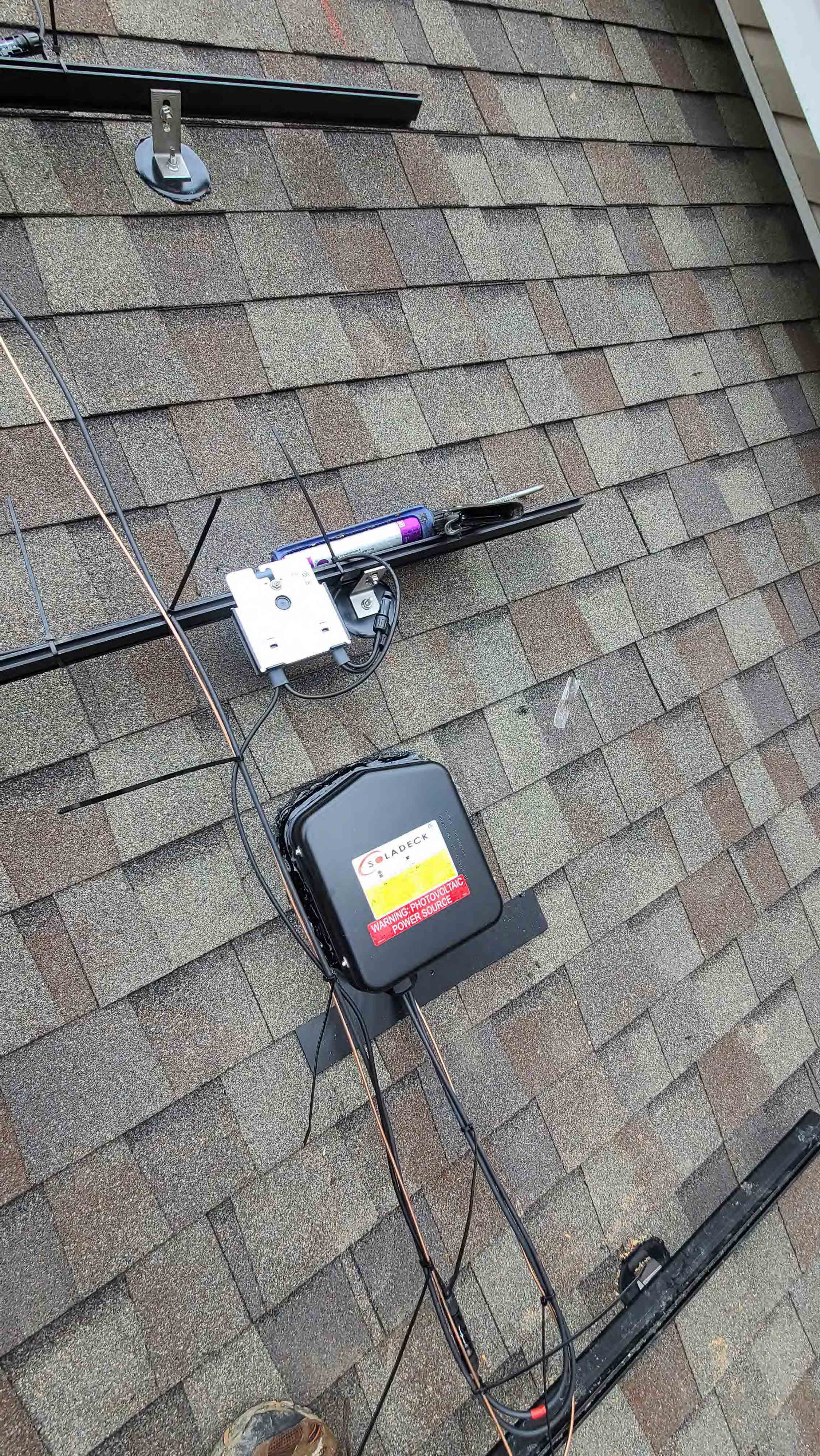




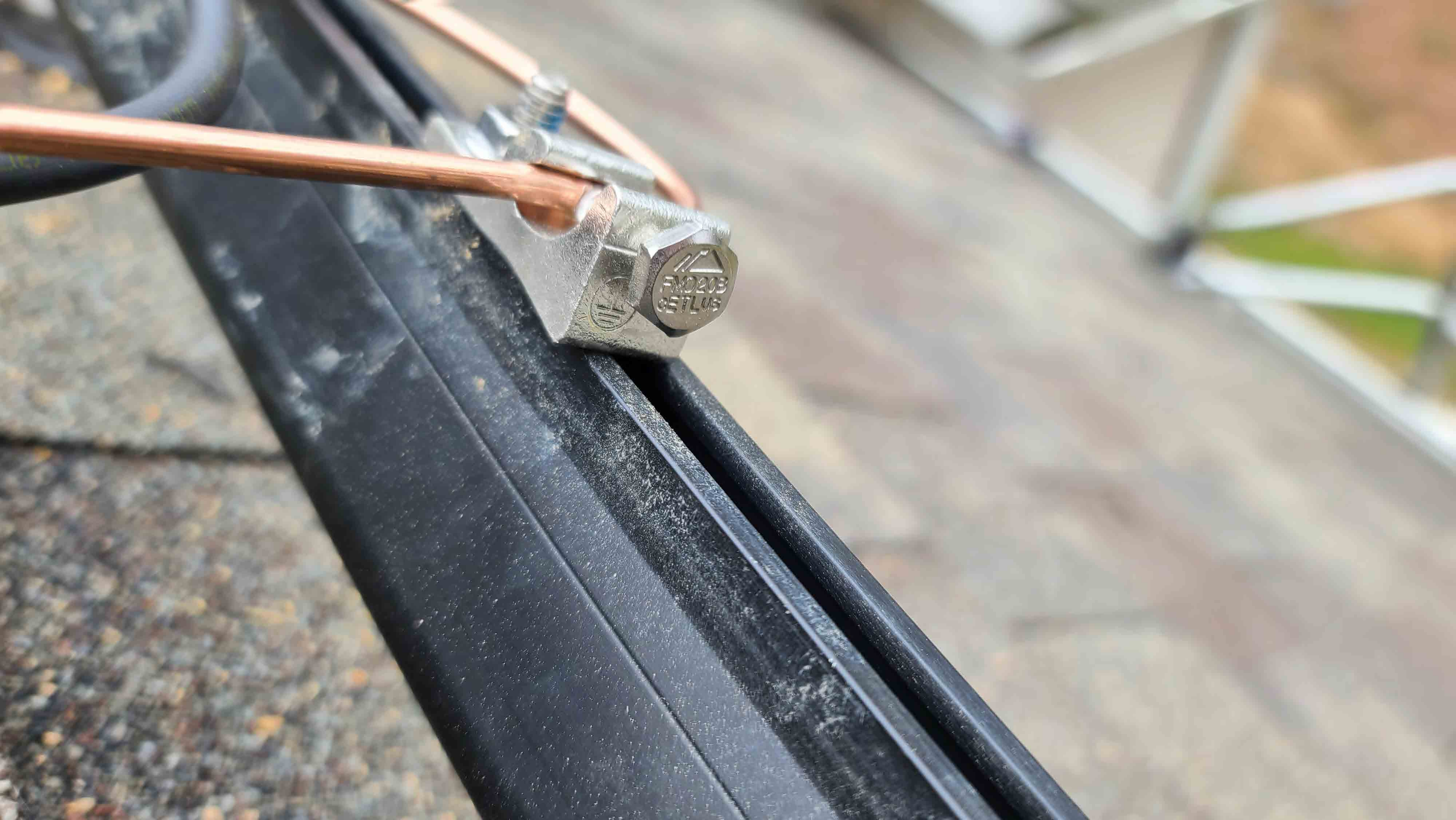




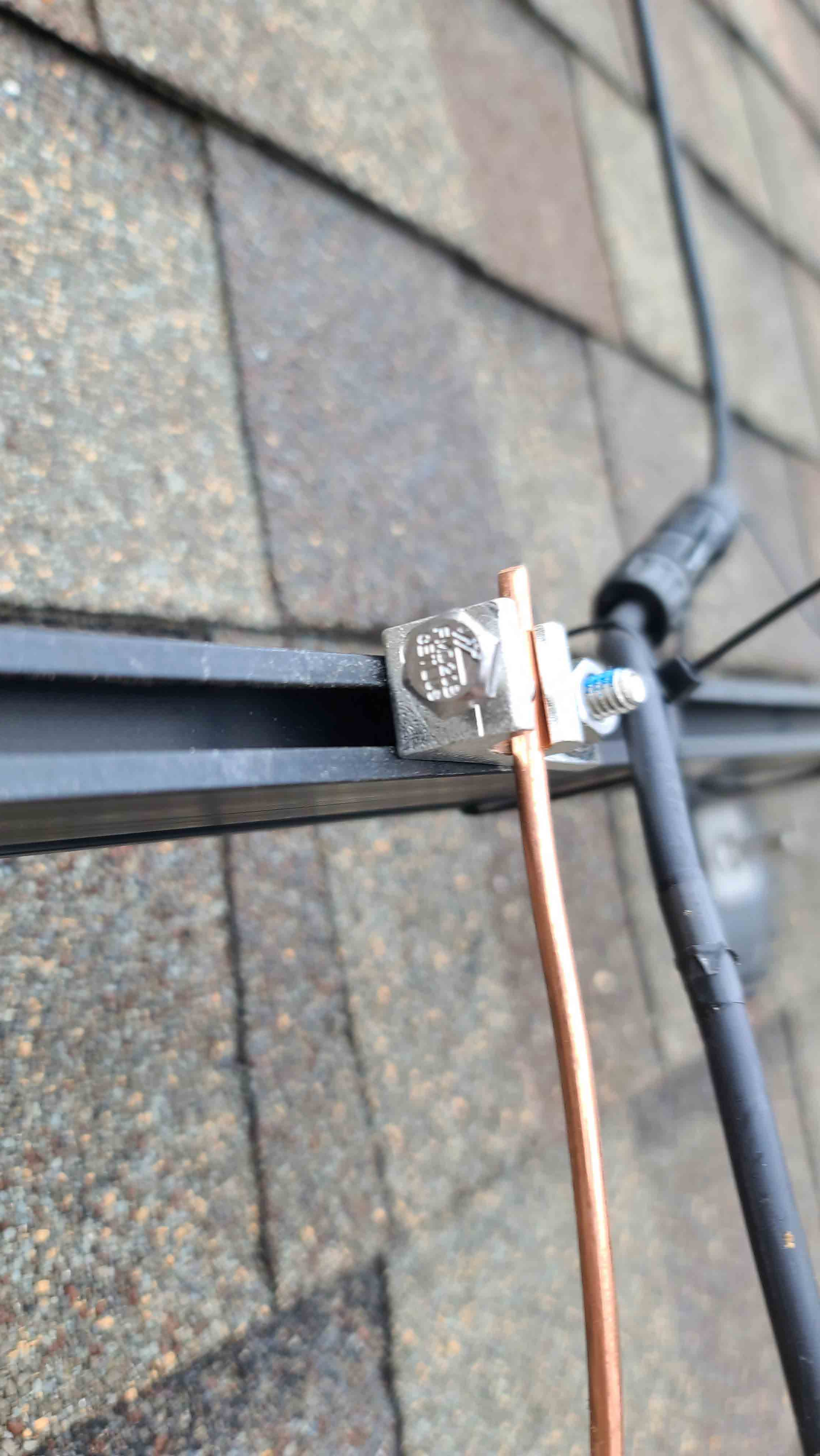




SOLADECK
WARNING: PHOTOVOLTIC
POWER SOURCE



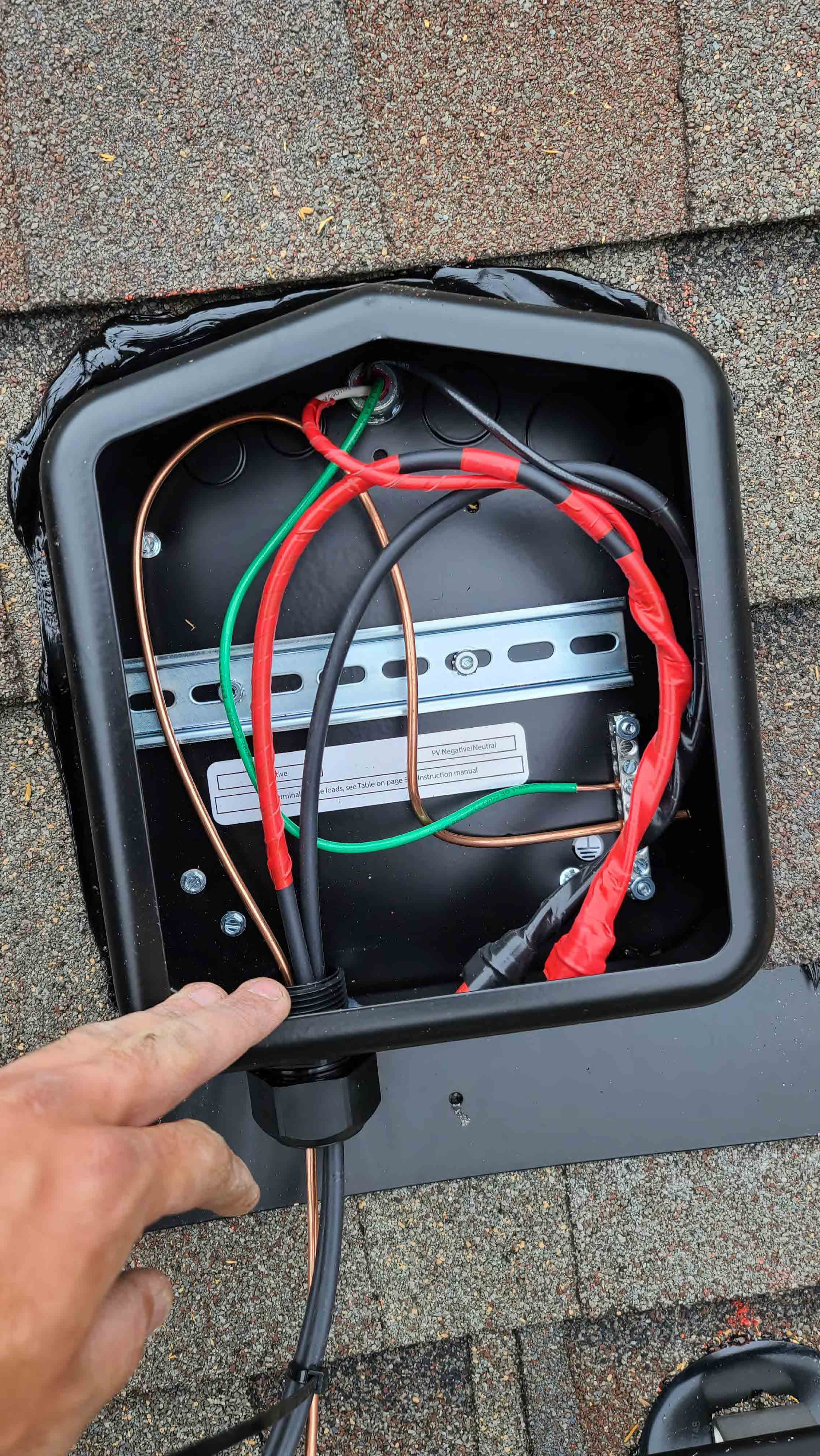
FMD20B
8ETLUS



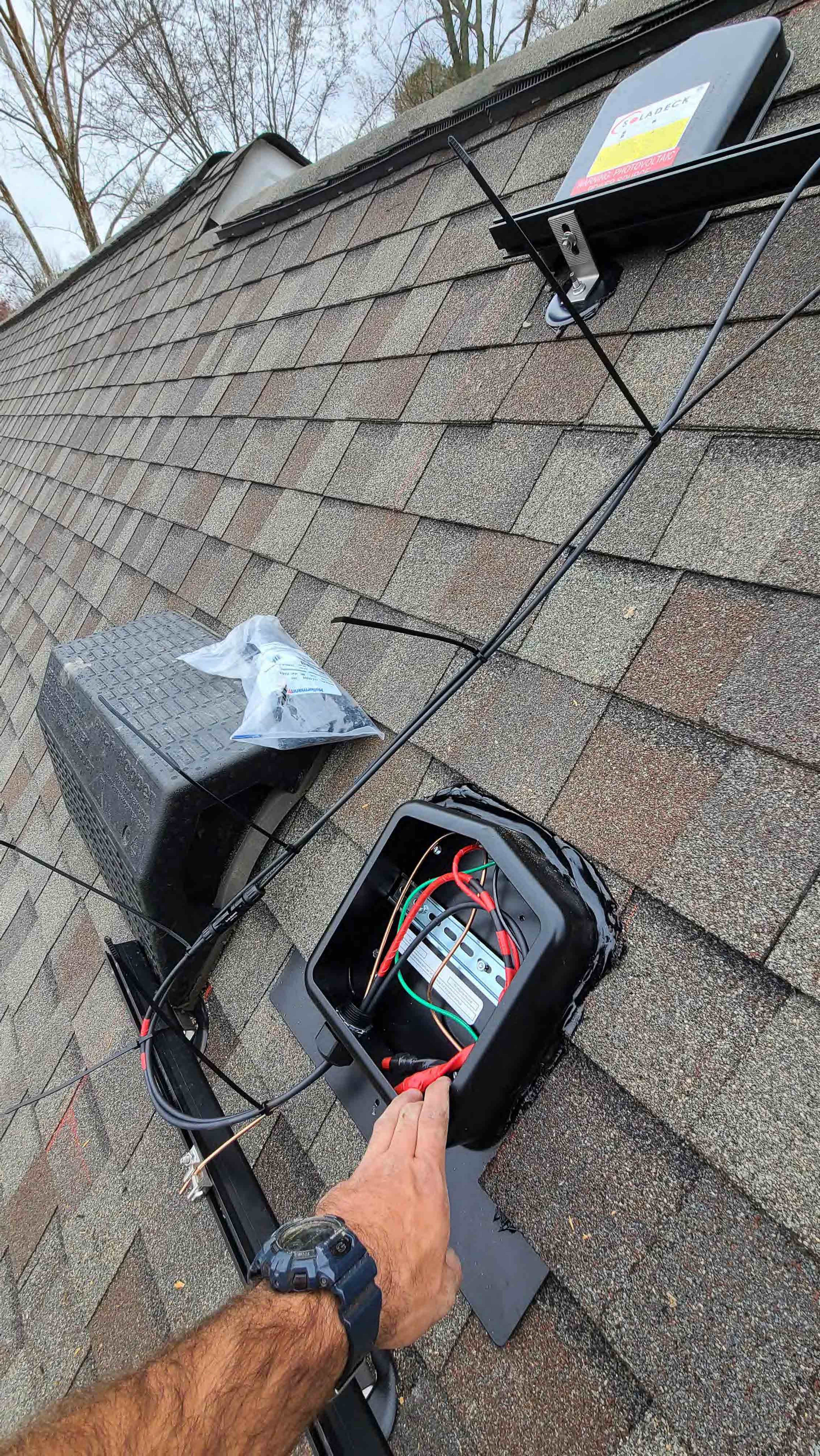


SOLADECK
WARNING: PHOTOVOLTAIC
POWER SOURCE



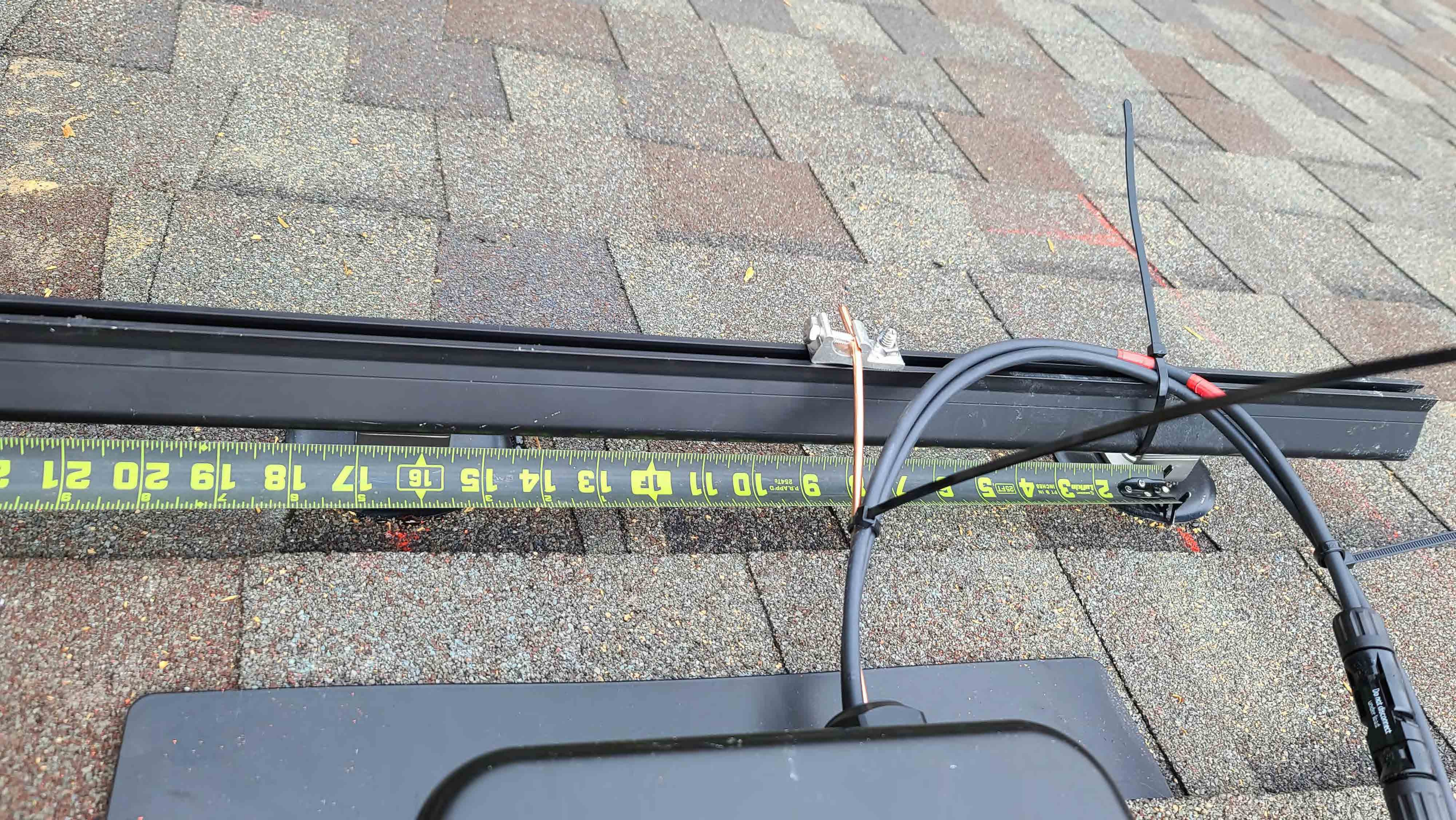


ive
terminal
e loads, see Table on page 5
Instruction manual
PV Negative/Neutral





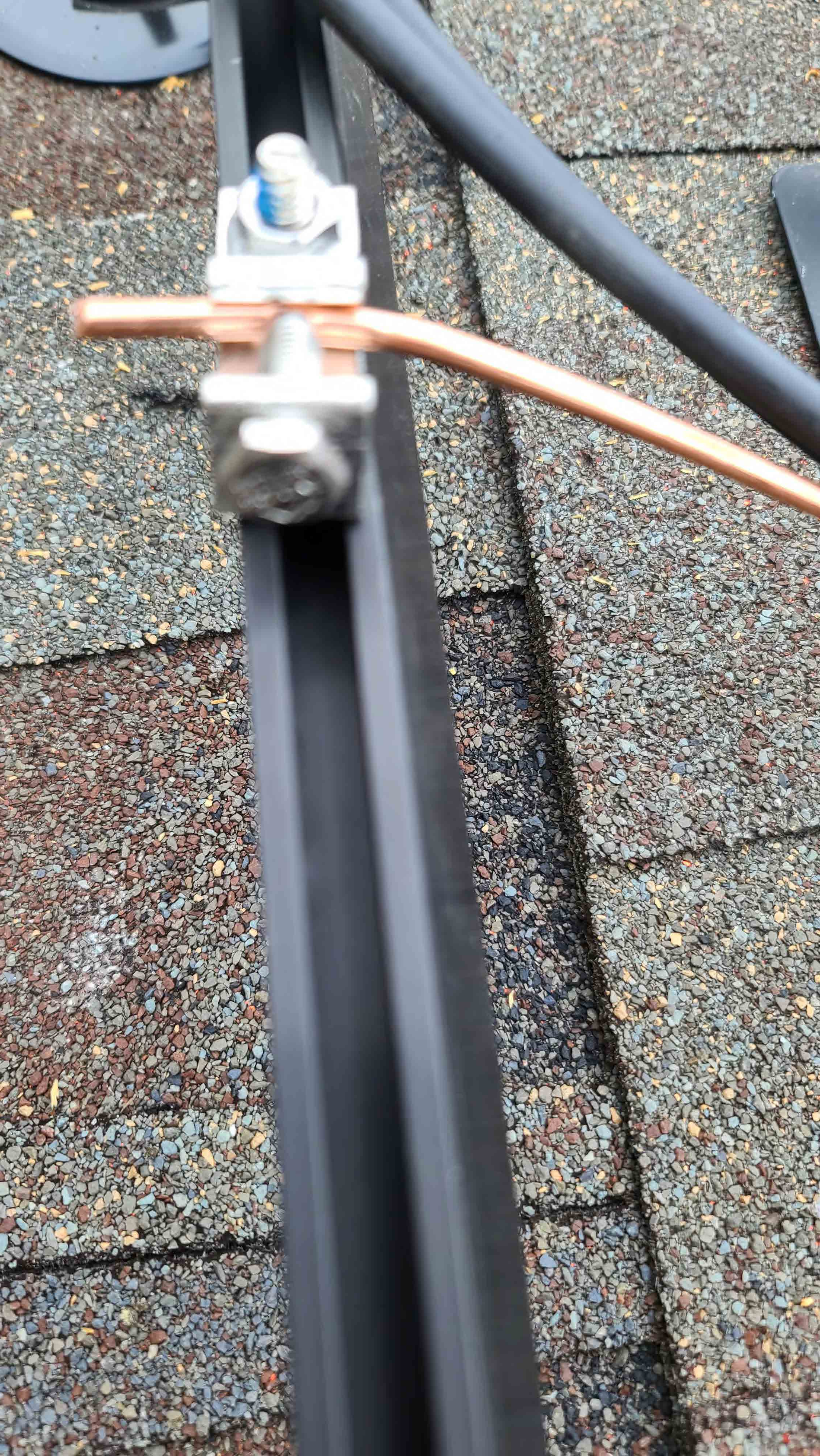
SOLADECK
WARNING: PHOTOVOLTAIC
POWER SOURCE



2 3 4 5 6 7 8 9 10 11 12 13 14 15 16 17 18 19 20 21 22
3 FT 6 IN 36 IN
P.M. App'd. 28470
2 3 4 5 6 7 8 9 10 11 12 13 14 15 16 17 18 19 20 21 22

Sharpie
Permanent Marker
Black





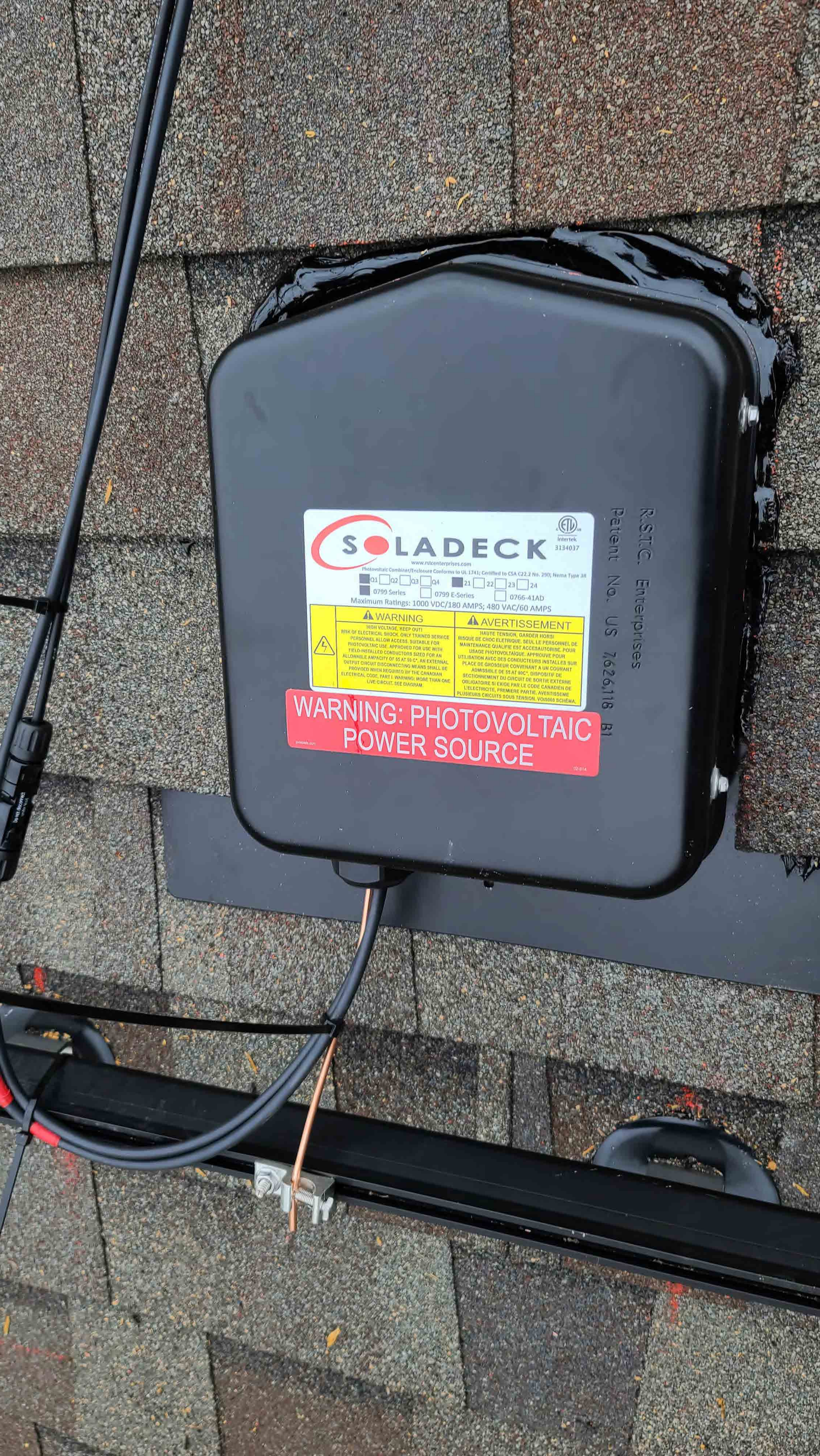
SOLADECK
www.rstcenterprises.com
Photovoltaic Combiner/Enclosure Conforms to UL 1741; Certified to CSA C22.2 No. 290; Nema Type 3R
Q1 Q2 Q3 Q4 21 22 23 24
0799 Series 0799 E-Series 0766-41AD
Maximum Ratings: 1000 VDC/180 AMPS; 480 VAC/60 AMPS



⚠ WARNING HIGH VOLTAGE, KEEP OUT! RISK OF ELECTRICAL SHOCK. ONLY TRAINED SERVICE PERSONNEL ALLOW ACCESS. SUITABLE FOR PHOTOVOLTAIC USE. APPROVED FOR USE WITH FIELD-INSTALLED CONDUCTORS SIZED FOR AN ALLOWABLE AMPACITY OF 55 AT 90 °C. AN EXTERNAL OUTPUT CIRCUIT DISCONNECTING MEANS SHALL BE PROVIDED WHEN REQUIRED BY THE CANADIAN ELECTRICAL CODE, PART I. WARNING: MORE THAN ONE LIVE CIRCUIT. SEE DIAGRAM.	⚠ AVERTISSEMENT HAUTE TENSION, GARDER HORS! RISQUE DE CHOC ÉLECTRIQUE. SEUL LE PERSONNEL DE MAINTENANCE QUALIFIÉ EST ACCÉSSAIRE. POUR L'UTILISATION AVEC DES CONDUCTEURS INSTALLÉS SUR PLACE DE GROSBORÉ CONVENANT À UN COURANT ADMISSIBLE DE 55 AT 90°C, DISPOSITIF DE SECTIONNEMENT DU CIRCUIT DE SORTIE EXTERNE OBLIGATOIRE SI EXIGÉ PAR LE CODE CANADIEN DE L'ÉLECTRICITÉ, PREMIÈRE PARTIE. AVERTISSEMENT: PLUSIEURS CIRCUITS SOUS TENSION. VOIR SCHÉMA.
---	---

WARNING: PHOTOVOLTAIC POWER SOURCE

R.S.T.C. Enterprises
Patent No. US 7626,118 B1







ENGINEERED, DESIGNED AND QUALITY TESTED BY Q CELLS IN GERMANY

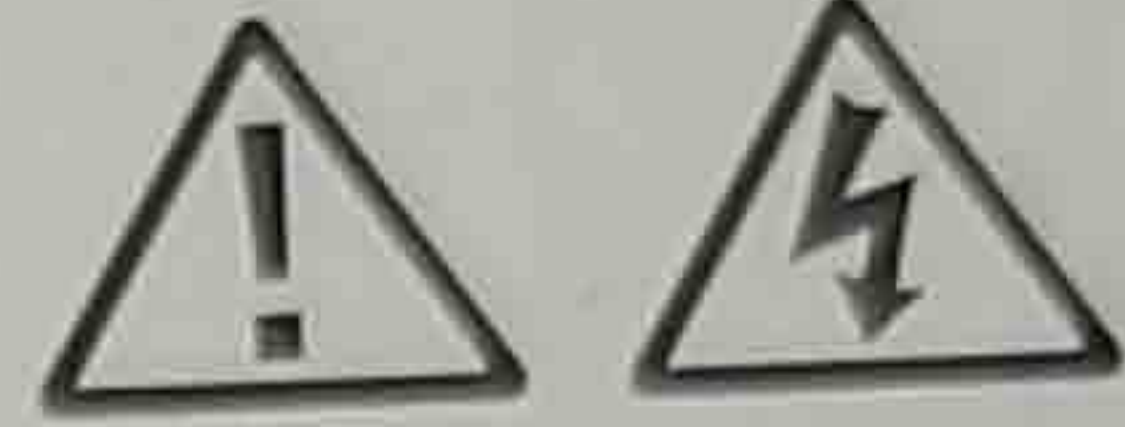
Q.PEAK DUO BLK-G8+ 340

Q CELLS

PERFORMANCE AT STANDARD TEST CONDITIONS*

Nominal Power* (+5W/-0W)	P_{MPP}	[W]	340
Short circuit current*	I_{SC}	[A]	10.40
Open circuit voltage*	V_{OC}	[V]	40.70
Current at maximum power	I_{MPP}	[A]	9.90
Voltage at maximum power	V_{MPP}	[V]	34.34
Maximum system voltage	V_{SYS}	[V]	1000(IEC) 1000(UL)
Weight	M	[kg / lbs]	19.9 / 43.9

Made in Korea



DANGER!

Risk of electric shock!

DO NOT connect or disconnect plug contacts while system is under load current. Refer to the Installation and Operation Manual before installing, operating or servicing this unit.

DANGER!

Risque de choc électrique!

NE PAS connecter ou déconnecter les connecteurs lorsque le système est en charge. Consultez le manuel d'installation et d'utilisation avant installation, utilisation et entretien du produit.

Fire Rating: Class C / Type 2

Design load: 55 lbs/ft²

Fuse Rating: 20 A

For field connections, use minimum No.12 AWG copper wires insulated for a minimum of 90°C

U.S. Patent No. 9,893,215
(solar cells)

EMAIL service@q-cells.com
WEB www.q-cells.com

*Measurement tolerances: $P_{MPP} \pm 3\%$; I_{SC} , $V_{OC} \pm 5\%$ at STC: 1000 W/m², 25 ± 2°C, AM 1.5 according to IEC 60904-3. Data given are rated (nominal) values.



www.tuv.com
ID 1111220277



Serial No.825921036399202937



Hanwha Solutions Corporation, 1329 Daegeum-ro, Geumwang-eup,
Eumseong-gun, Chungcheongbuk-do, Republic of Korea, 27632
Q CELLS is a brand of Hanwha Solutions Corporation

