

SERVICE DISCONNECT
DESCONEXION DE ACOMETIDA



TORY / DIRECTORIO

4	
6	
8	
10	
12	
14	
16	
18	
19	20

SQUARE D COMPANY



SOLAR

WARNING

POWER SOURCE
OUTPUT CONNECTION
DO NOT RELOCATE THIS
OVERCURRENT DEVICE

00-216

Add-on Surge Protection
For protection against power surges, install a SURGE-BREAKER™ secondary surge arrester from Square D.

Back-up Power Protection
For easy switching to a standby generator, install one of the following Square D generator kits:

RCGK2	for use on	RC816F RC204DM	RCGK2	para usarse con un	RC816F RC204DM
QCGK3	for use on	QC816F QC2442M	QCGK3	para usarse con un	QC816F QC2442M

SQUARE D WWW.SQUARED.COM
40272-319-01

HAZARD / PELIGRO

HAZARD OF ELECTRIC SHOCK, EXPLOSION, OR ARC FLASH

PELIGRO DE DESCARGA ELECTRICA, EXPLOSION O DESTELLO POR ARQUERO

Utilice siempre de protección personal (EPP) apropiada y siga las prácticas de seguridad para la instalación con un Certificado de Instalación Eléctrica (CIE).

Siempre use el equipo de protección personal apropiado para el trabajo que está realizando.

Antes de trabajar en el equipo, asegure todos los dispositivos, las puertas y las herramientas.

El cumplimiento de estas precauciones puede salvar la muerte o lesiones serias.









902420456444301424

ENGINEERED, DESIGNED AND QUALITY TESTED BY Q CELLS IN GERMANY

Q.PEAK DUO BLK-G6+ 335



PERFORMANCE AT STANDARD TEST CONDITIONS*

Weight	M	[kg / lbs]	19.9 / 43.9
Nominal Power* (+5W/-0W)	P_{MPP}	[W]	335
Short circuit current*	I_{sc}	[A]	10.47
Open circuit voltage*	V_{oc}	[V]	40.41
Current at maximum power	I_{MPP}	[A]	9.97
Voltage at maximum power	V_{MPP}	[V]	33.62
Maximum system voltage	V_{SYS}	[V]	1000(IEC) 1000(UL)

*Measurement tolerances: $P_{MPP} \pm 3\%$; I_{sc} , $V_{oc} \pm 5\%$ at STC: 1000 W/m², 25 ± 2 °C, AM 1.5 according to IEC 60904-3. Data given are rated (nominal) values.



www.tuv.com
ID 111720277



UL 61730
Certified
US



Serial No. 902420456444301424

Hanwha Solutions Corporation, 202, Sansusandan 2-ro, Iwol-myeon, Jincheon-gun, Chungcheongbuk-do, Republic of Korea, 27816
Q CELLS is a brand of Hanwha Solutions Corporation

servicing this unit.
Installation and Operation Manual before installing, operating or under load current. Refer to the plug contacts while system is DO NOT connect or disconnect

DANGER!
Risk of electric shock!



Made in Korea

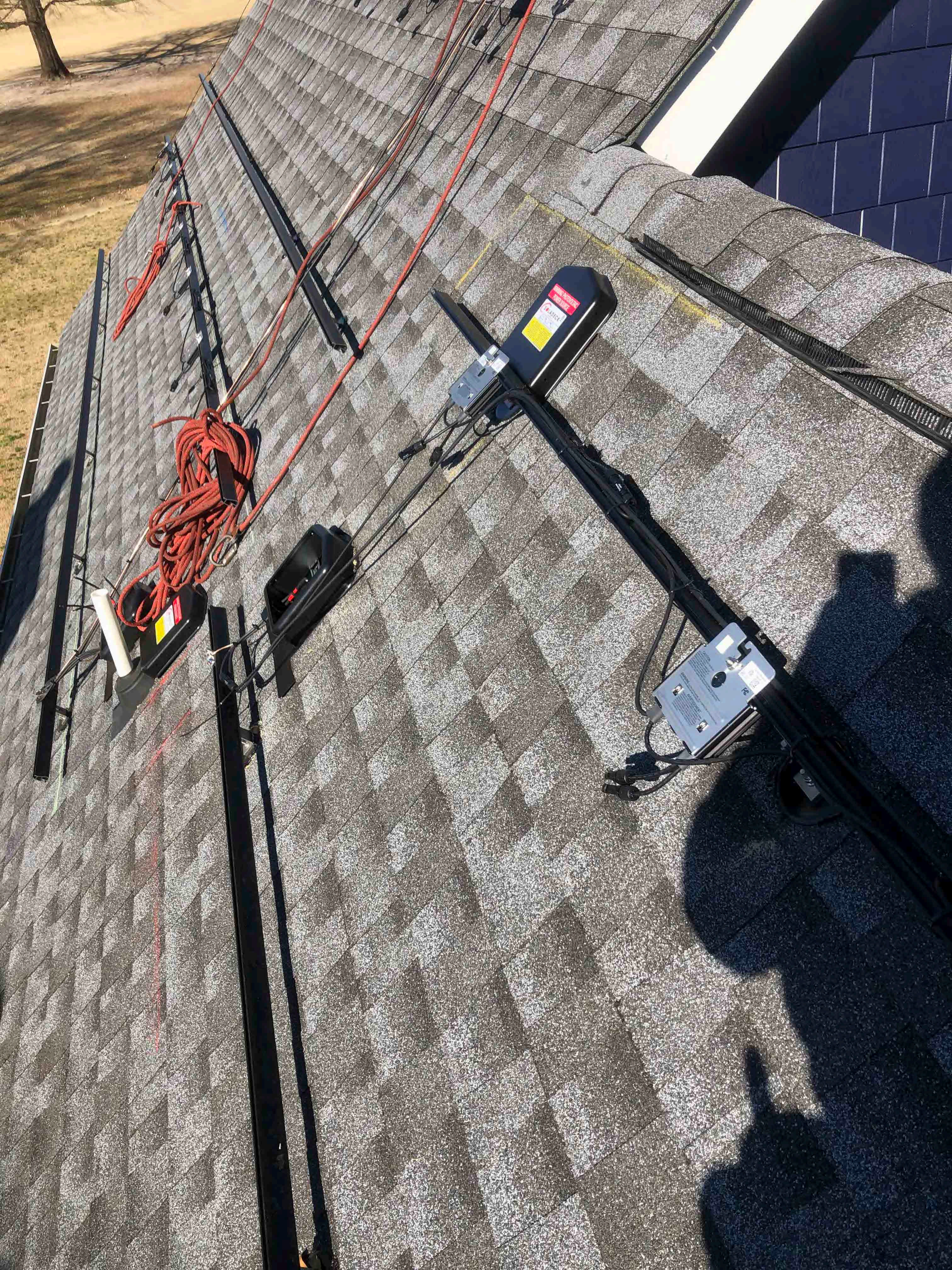
DANGER!
Risque de choc électrique!
NE PAS connecter ou déconnecter les connecteurs lorsque le système est en charge.
Consultez le manuel d'installation, et d'utilisation avant installation, utilisation et entretien du produit.

Fire Rating: Class C / Type 2
Design load: 55 lbs/ft²
Fuse Rating: 20A
For field connections, use minimum No.12 AWG copper wires insulated for a minimum of 90 °C

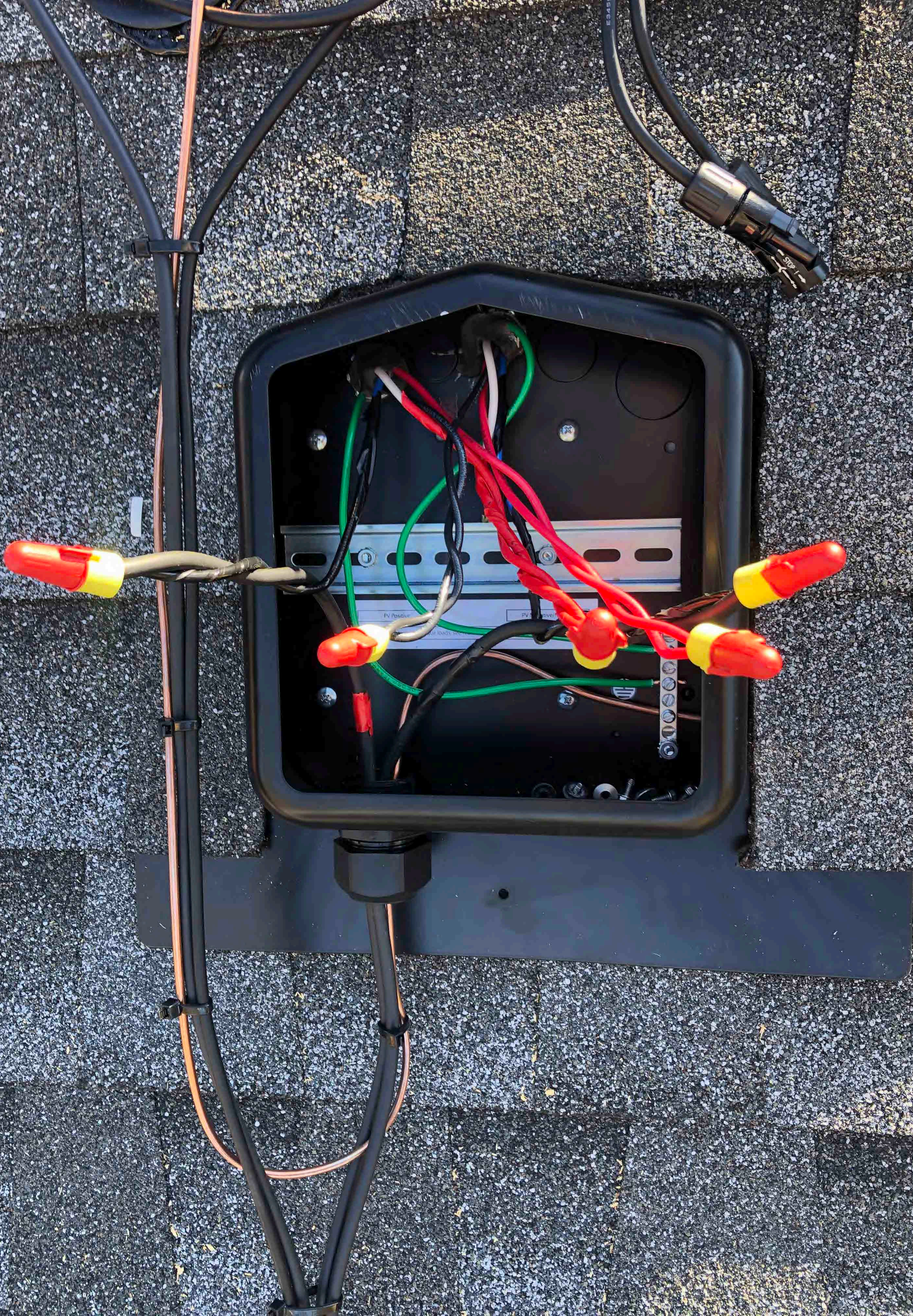
U.S. Patent No. 9,893,215
(solar cells)
EMAIL service@q-cells.com
WEB www.q-cells.com





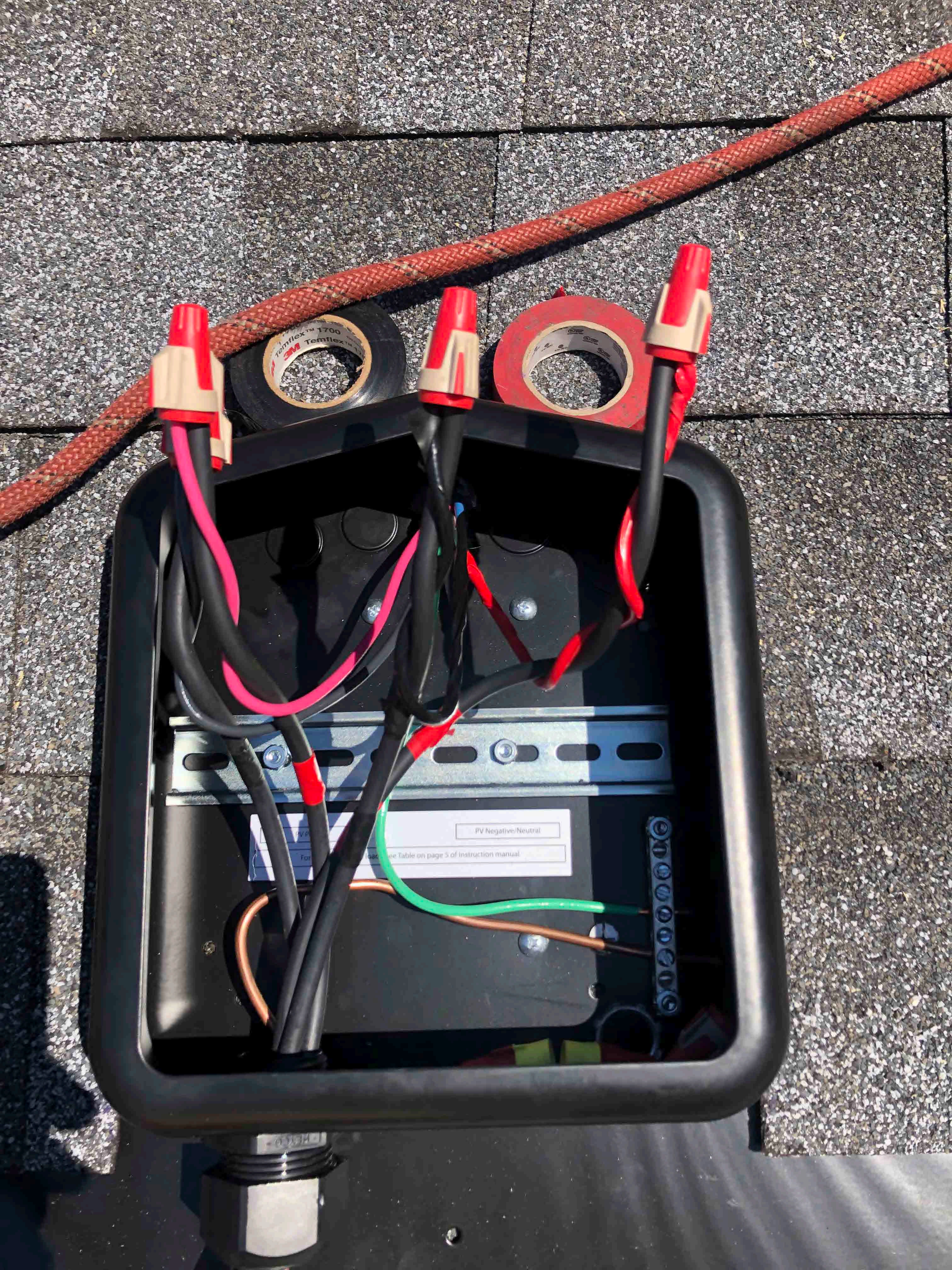
























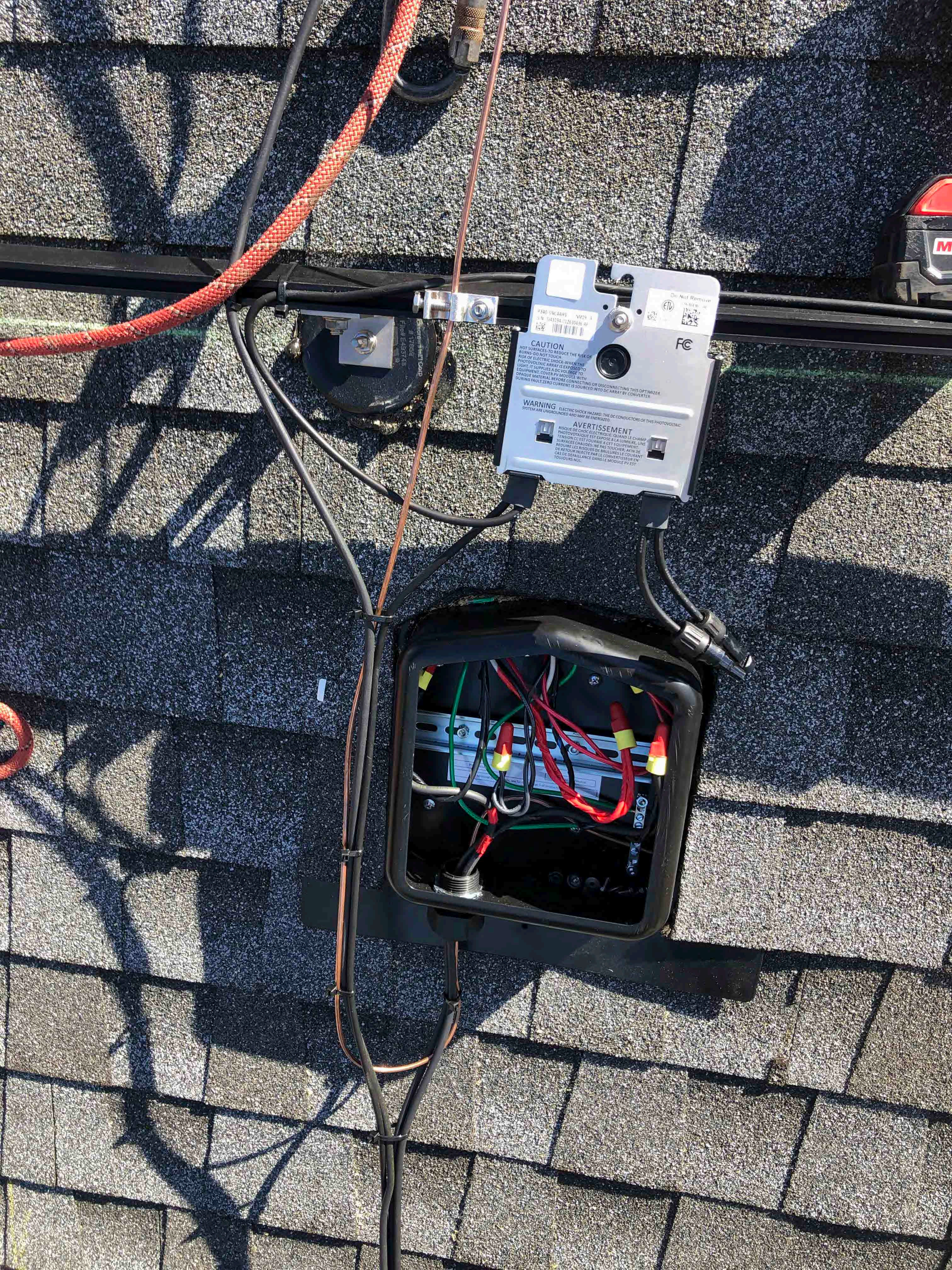
PV Positive

PV Negative Central

For terminal torque loads see page 5 of Instruction manual







Do Not Remove
E140-5V0-0A95
S/N: 041194 012610496-02
FC

CAUTION
HOT SURFACES: TO REDUCE THE RISK OF BURNING, DO NOT TOUCH.
RISK OF ELECTRIC SHOCK: WHEN THE PHOTOVOLTAIC ARRAY IS EXPOSED TO LIGHT, IT SUPPLIES A DC VOLTAGE TO EQUIPMENT. COVER PV MODULE WITH OPAQUE MATERIAL BEFORE CONNECTING OR DISCONNECTING THIS OPTIMIZER. DURING FAULT, ZERO CURRENT IS SOURCED INTO DC ARRAY BY CONVERTER.

WARNING ELECTRIC SHOCK HAZARD: THE DC CONDUCTORS OF THIS PHOTOVOLTAIC SYSTEM ARE UNGROUNDED AND MAY BE ENERGIZED.

AVERTISSEMENT
RISQUE DE CHOC ELECTRIQUE: QUAND LE CHAMP PHOTOVOLTAIQUE EST EXPOSE A LA LUMIERE, LES SURFACES CHAUDES: NE PAS TOUCHER. AVANT DE RETOURNER L'INJECTEUR PAR LE CONVERTISSEUR EN TOUJOURS NUL.

