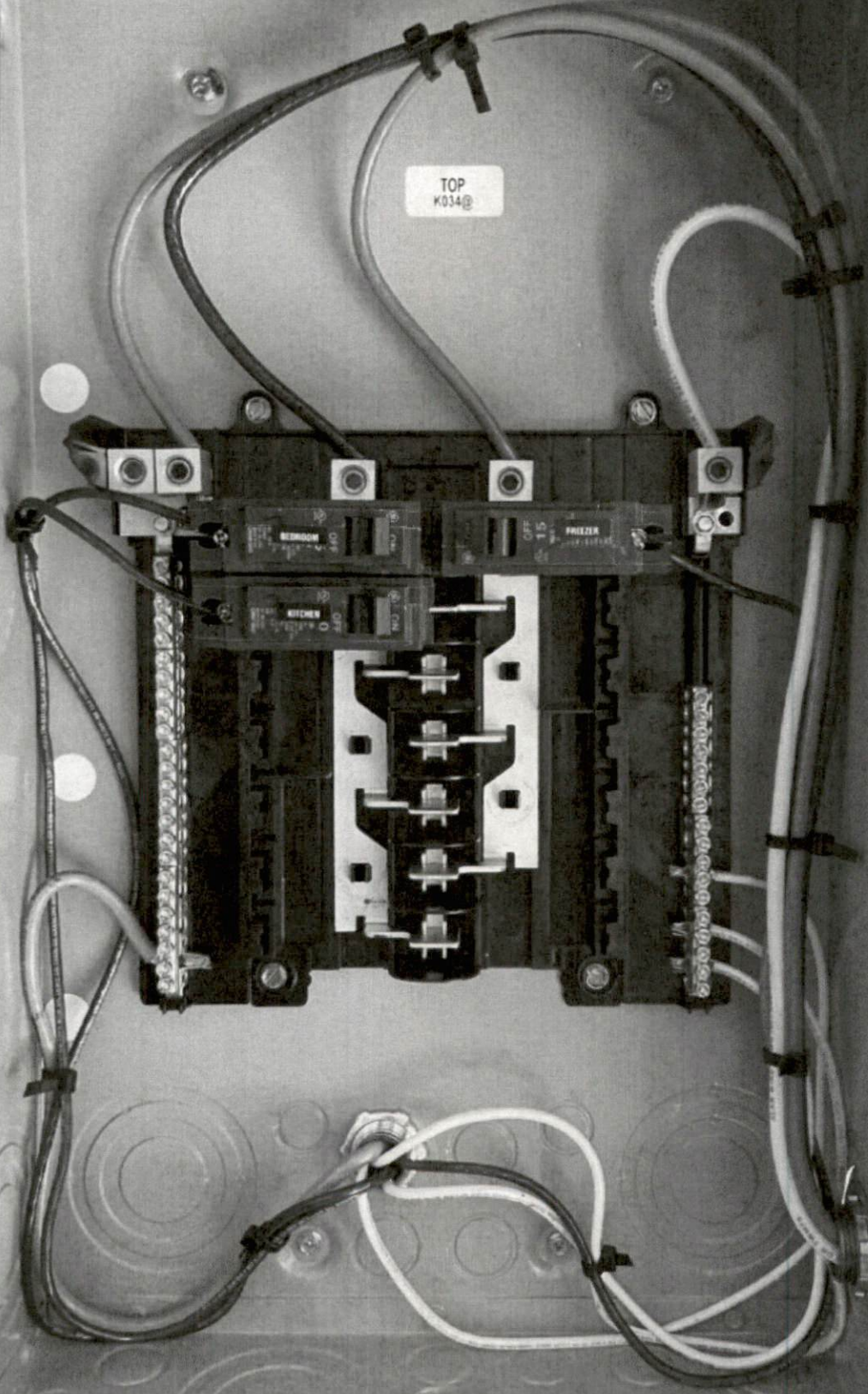
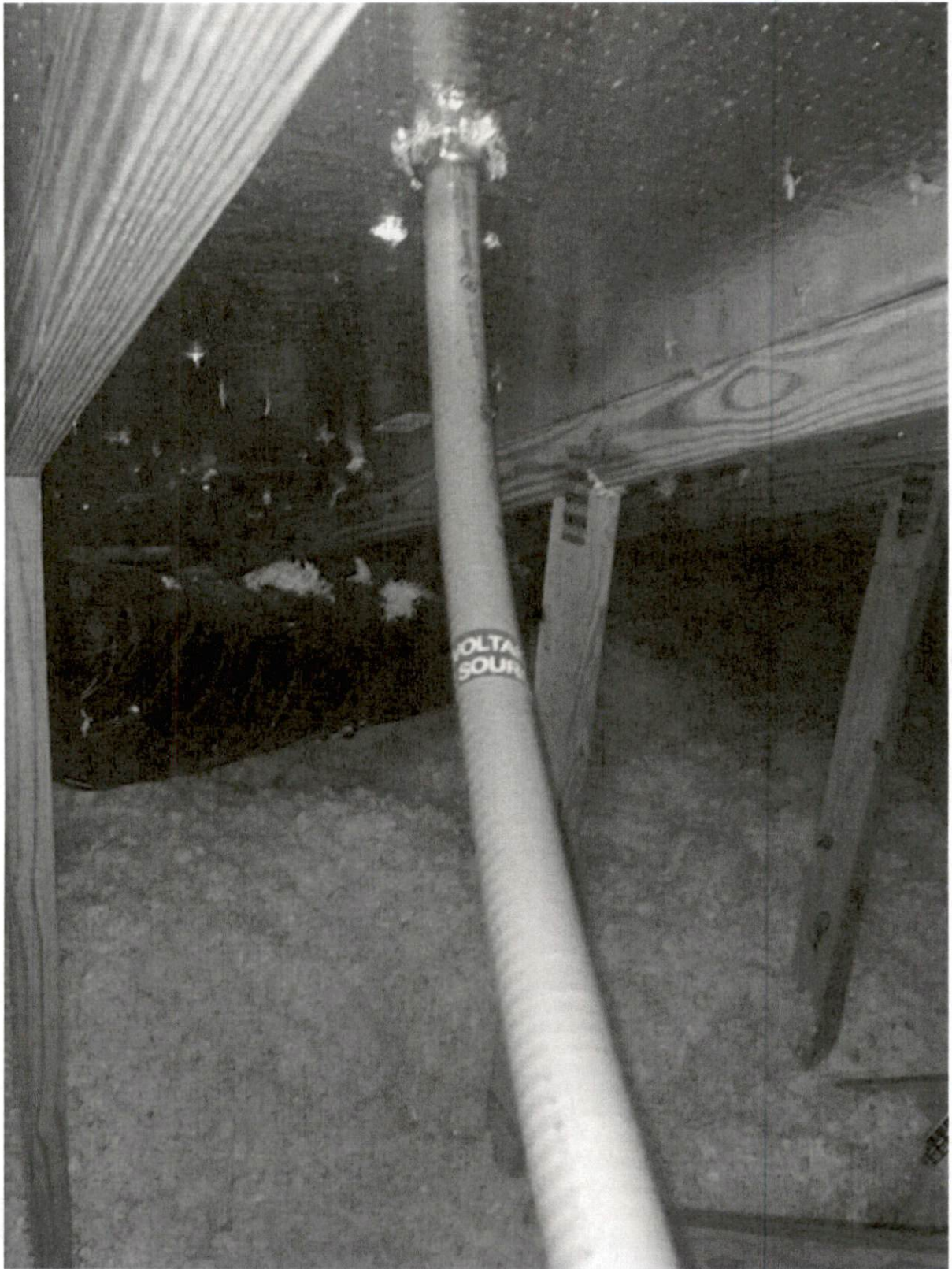




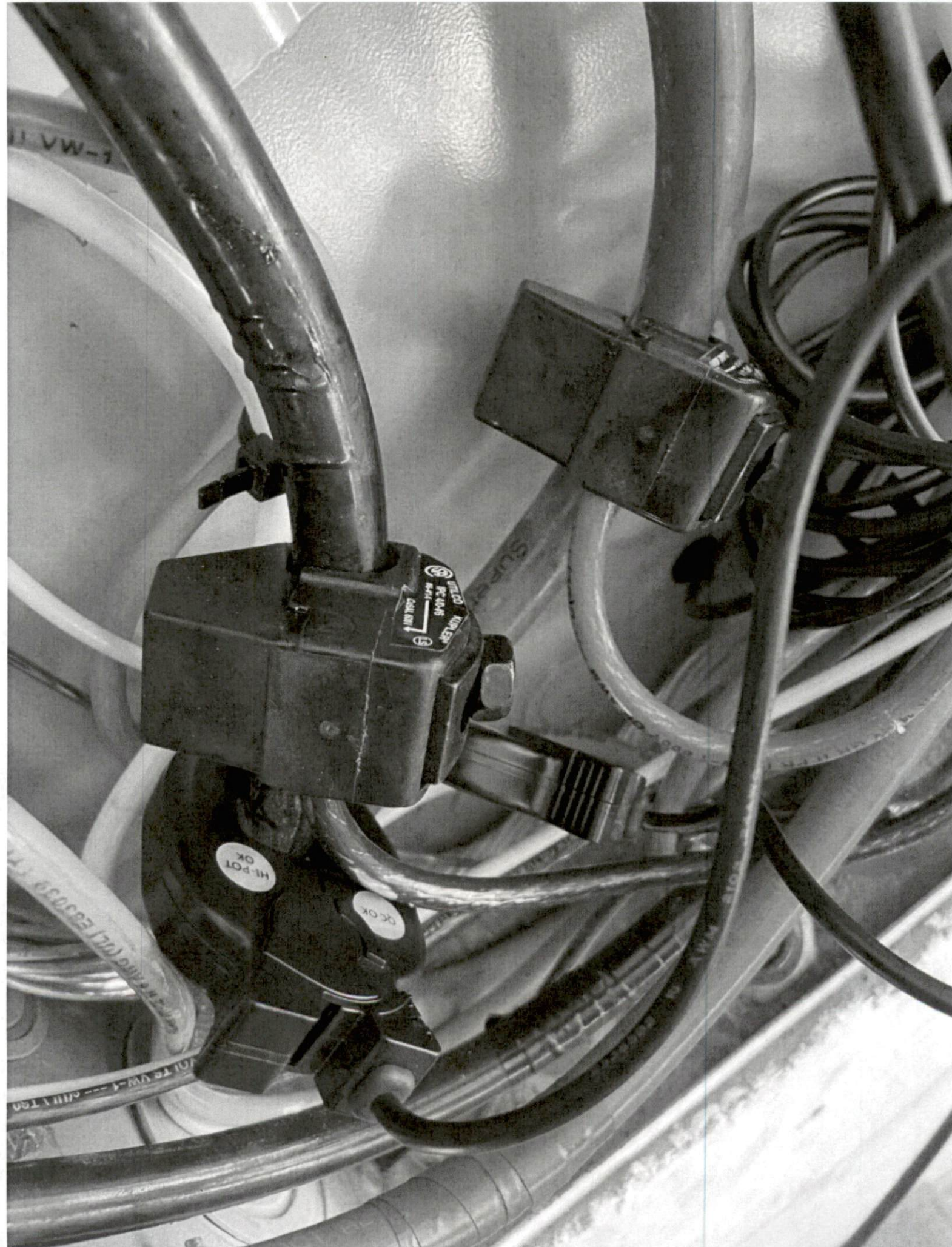
TOP  
K034@

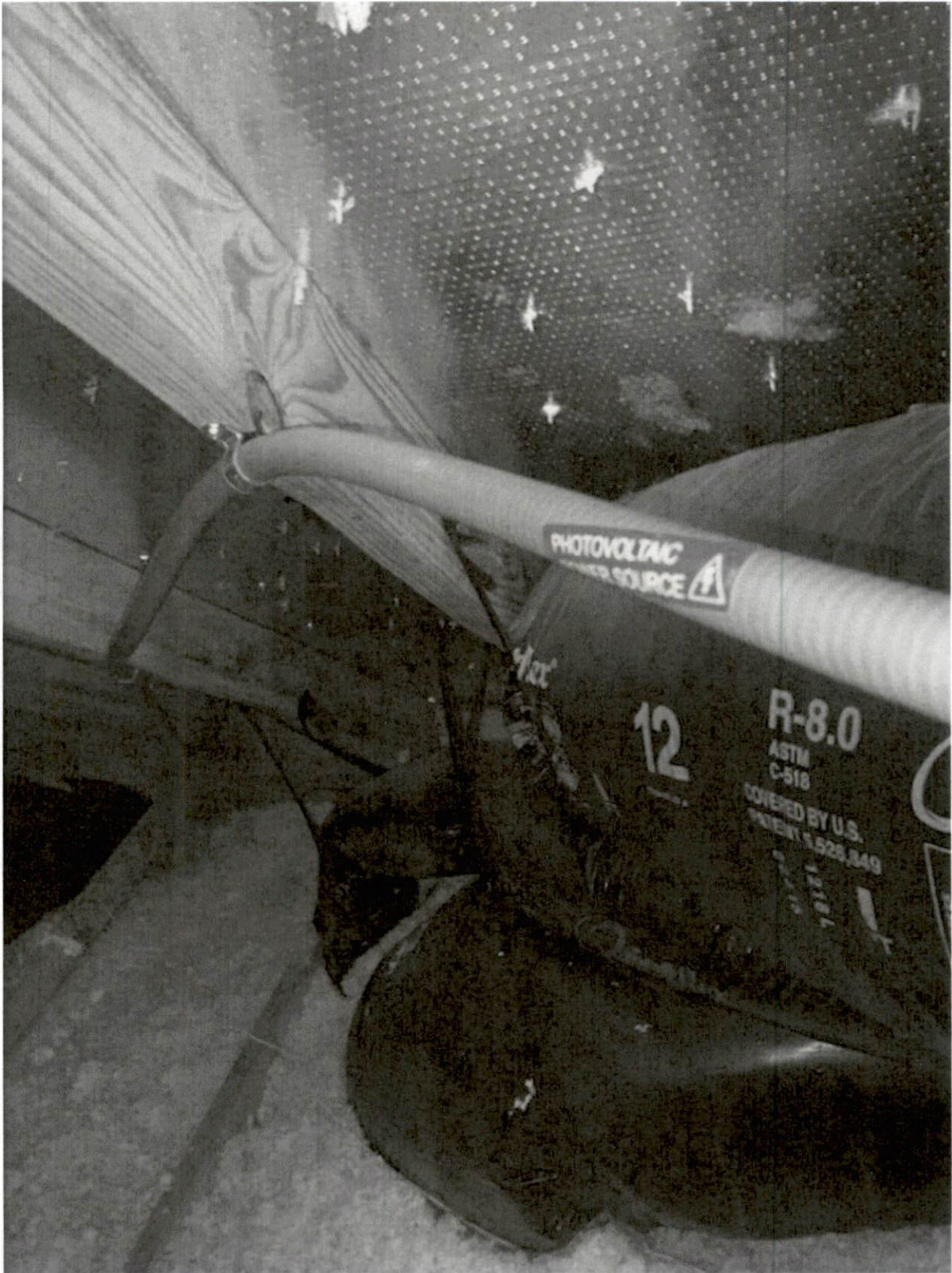


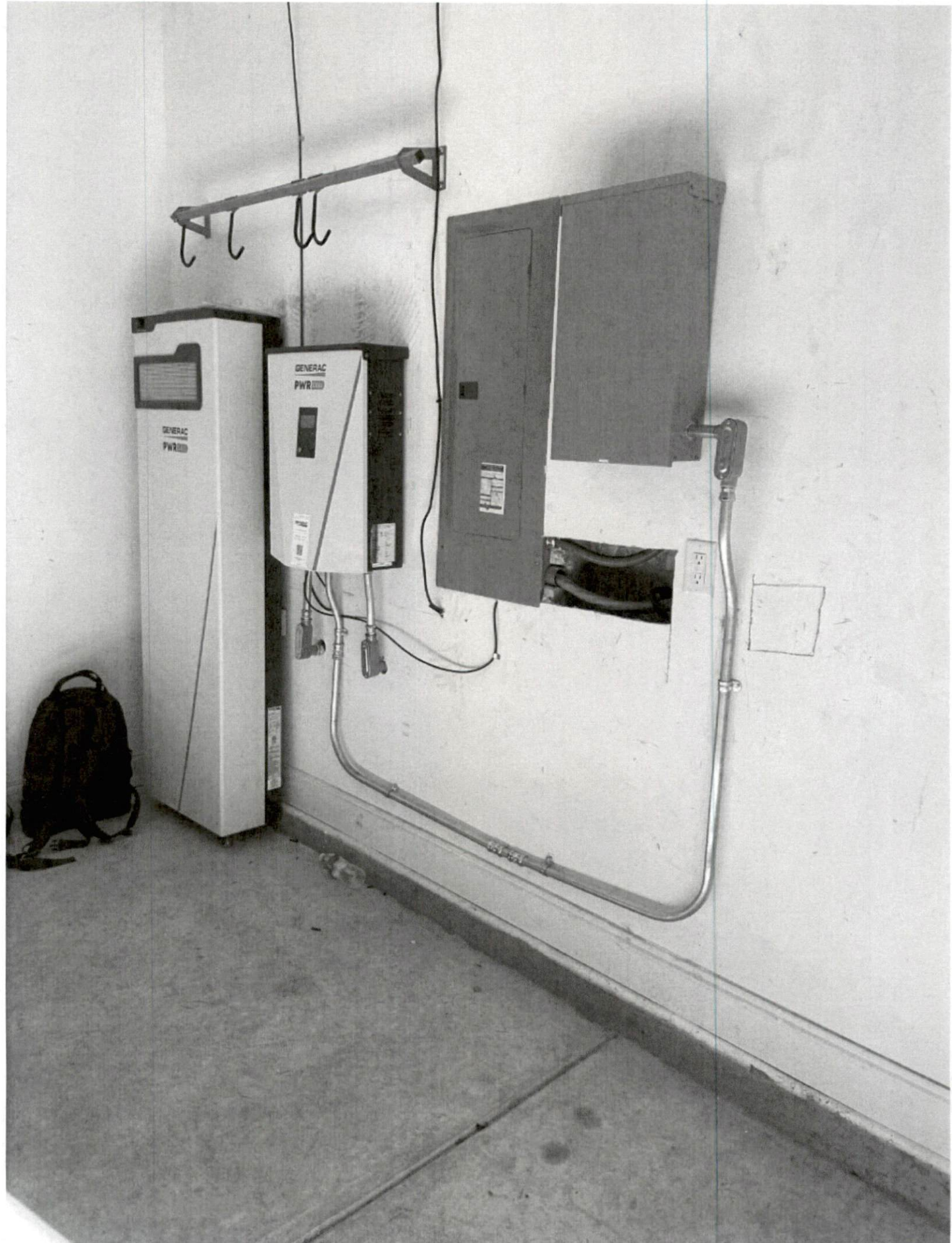












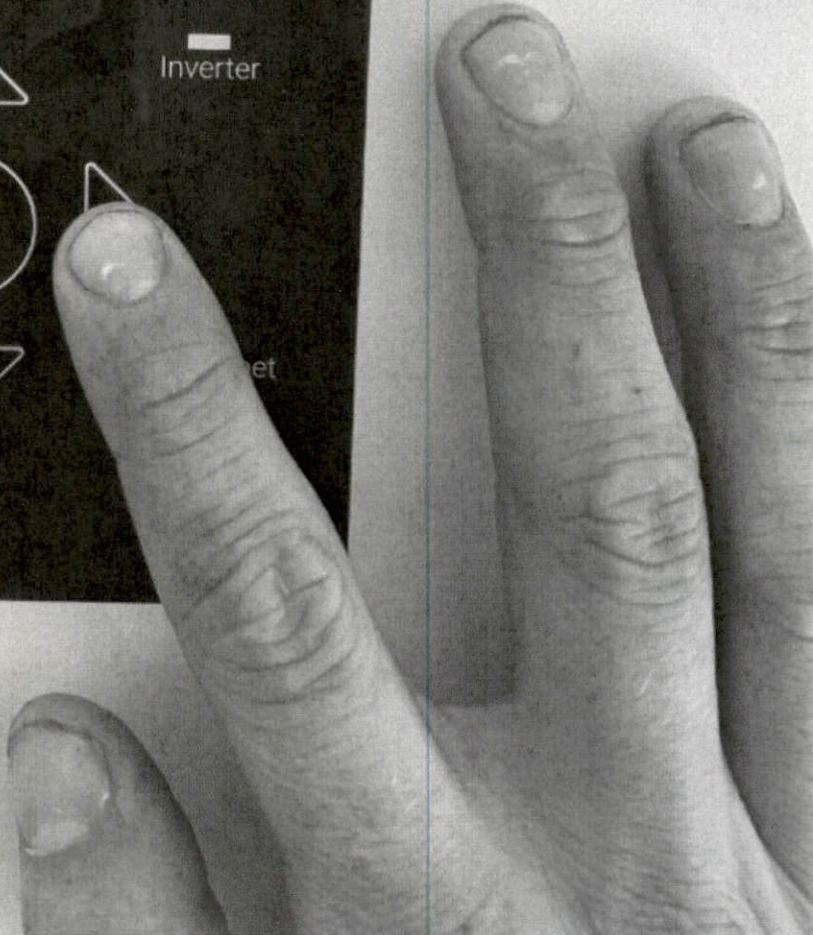


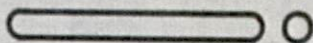
PV Link S2502 -07  
Photovoltaics  
making power  
Power: 1167W  
PV Voltage: 262V  
E-total: 3.4kWh

REbus

Inverter

  
Shutdown  
(hold)





PEEL AWAY

# GENERAC

REGISTER YOUR SYSTEM

SERIAL NUMBER:

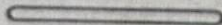
X7602-10662

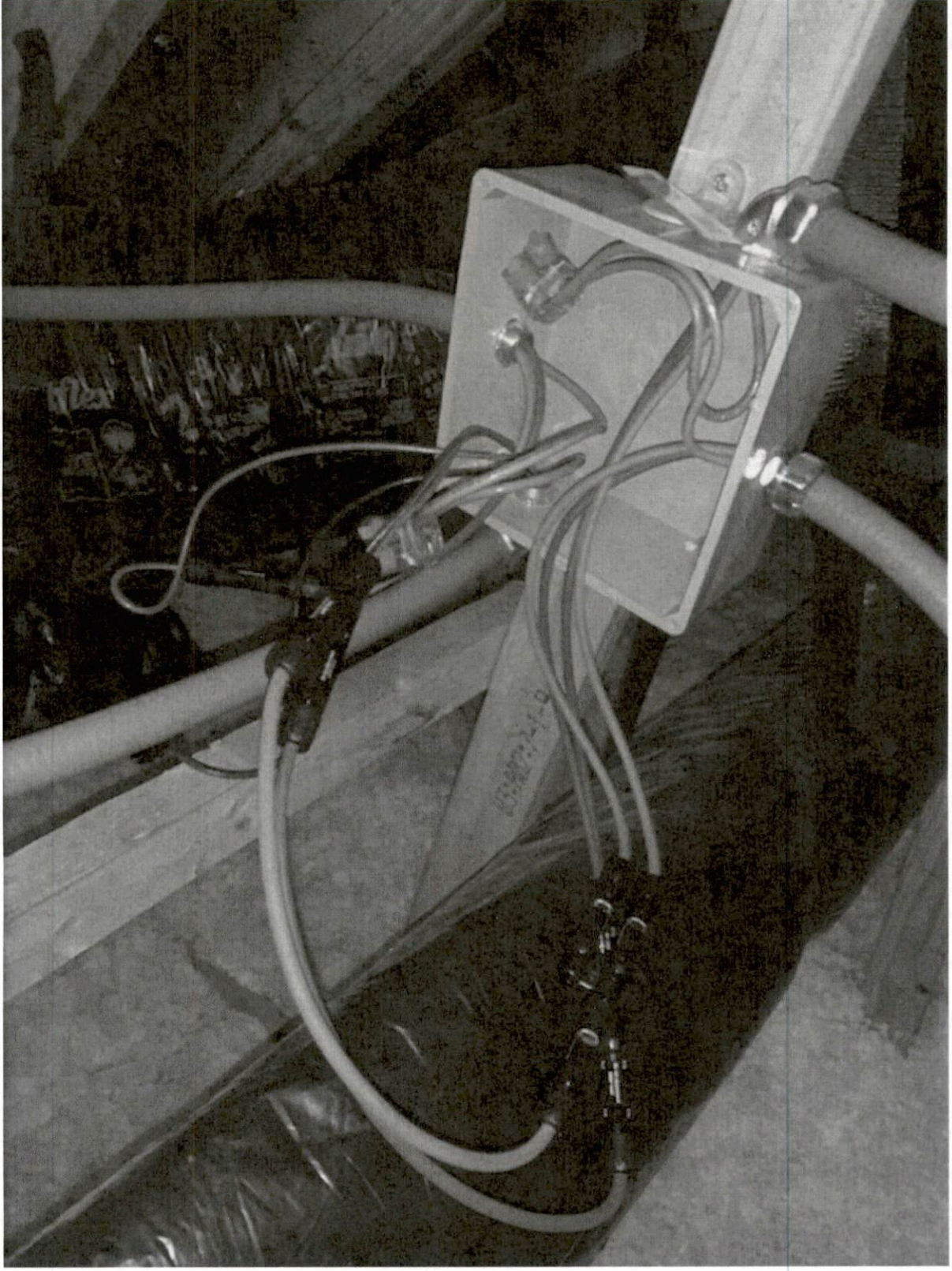
REGISTRATION CODE:

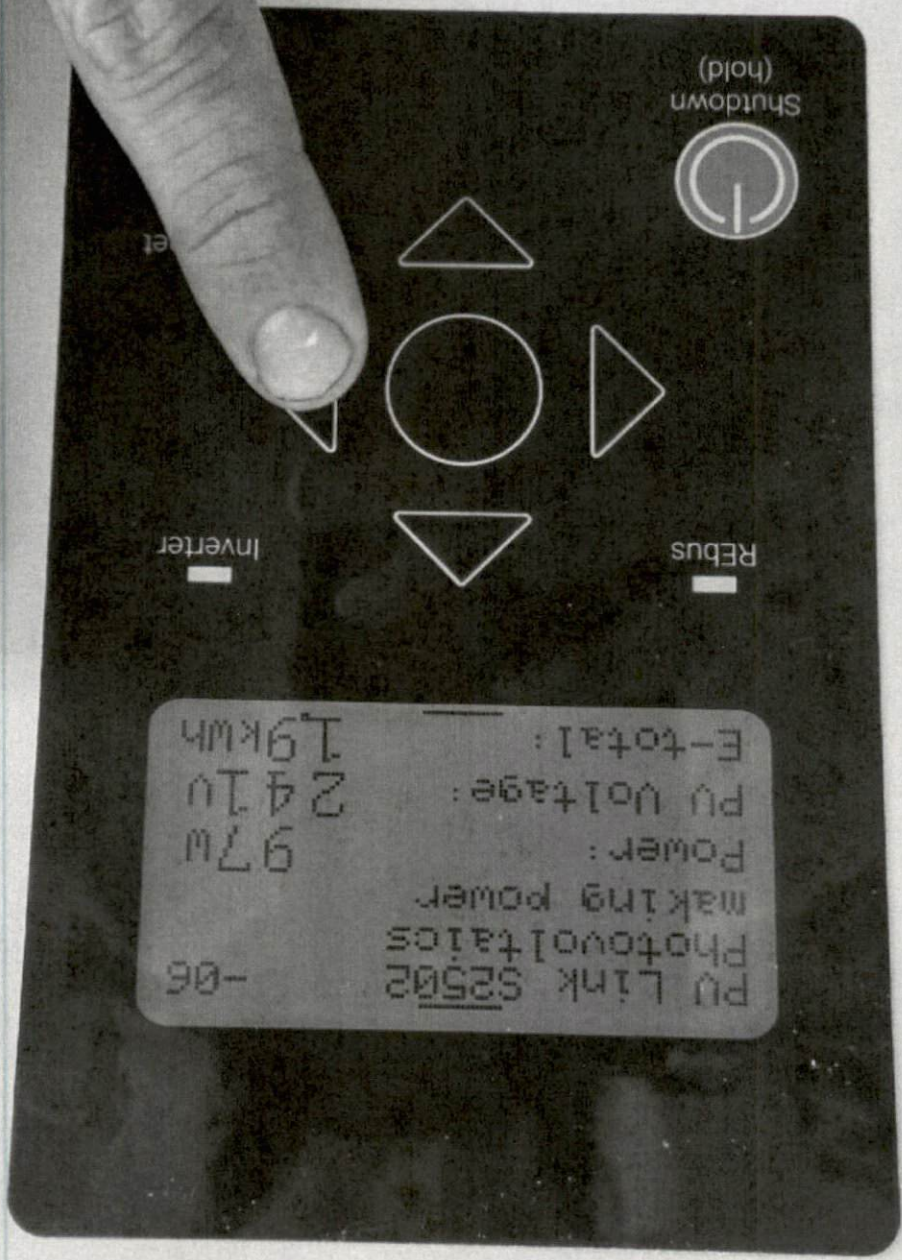
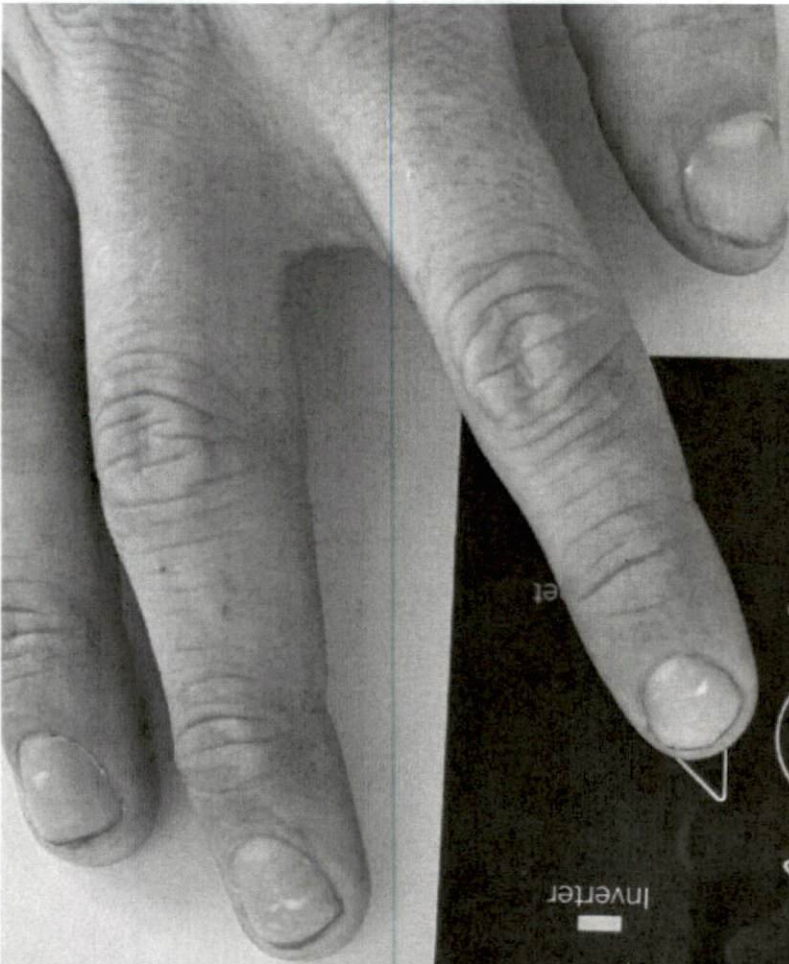
RPCW-LMPV



Go to [register.generac.com](http://register.generac.com) to register  
or scan the code above.







Shutdown  
(hold)



Rebus

Inverter

PU Link S2502  
Photovoltaics  
making power  
Power: 97W  
PU Voltage: 241V  
E-total: 1.9kWh

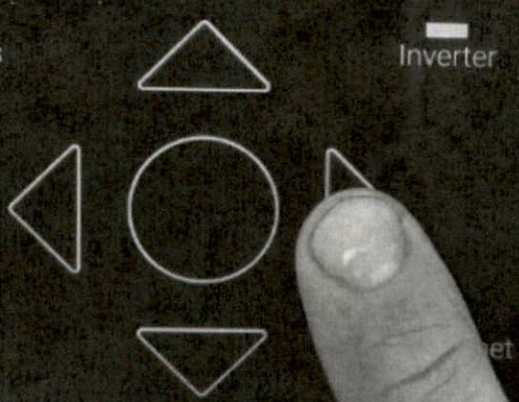
PWRcell X7602 -02  
Inverter  
grid connected  
AC Power: 1220w  
AC Voltage: 248V  
E-total: 10.8kWh

REbus

Inverter



Shutdown  
(hold)



# GENERAC

## POWER CORE

30A DC Disconnects

SPRING 2	SPRING 2
OFF	OFF

⚠️ Turn OFF All PV Array Disconnects Before Working On Inverter

SPRING 2	SPRING 2
OFF	OFF

FUSE LOCATION / REPLACEMENT INSTRUCTIONS

**WARNING:** Do not touch the fuse or the fuse holder. The fuse holder is hot when the inverter is operating.

**ATTENTION:** The fuse holder is hot when the inverter is operating. Do not touch the fuse holder when the inverter is operating.

PROTECTED LOADS

ON OFF

50A 240V

