









Do Not Remove

12C4F4A6-70



Intertek
4004590



CAUTION

HOT SURFACES-TO REDUCE THE RISK OF BURNS-DO NOT TOUCH.
RISK OF ELECTRIC SHOCK-WHEN THE PHOTOVOLTAIC ARRAY IS EXPOSED TO LIGHT, IT SUPPLIES A DC VOLTAGE TO EQUIPMENT. COVER PV MODULE WITH OPAQUE MATERIAL BEFORE CONNECTING OR DISCONNECTING THIS OPTIMIZER.
DURING FAULT, ZERO CURRENT IS SOURCED INTO DC ARRAY BY CONVERTER.

WARNING

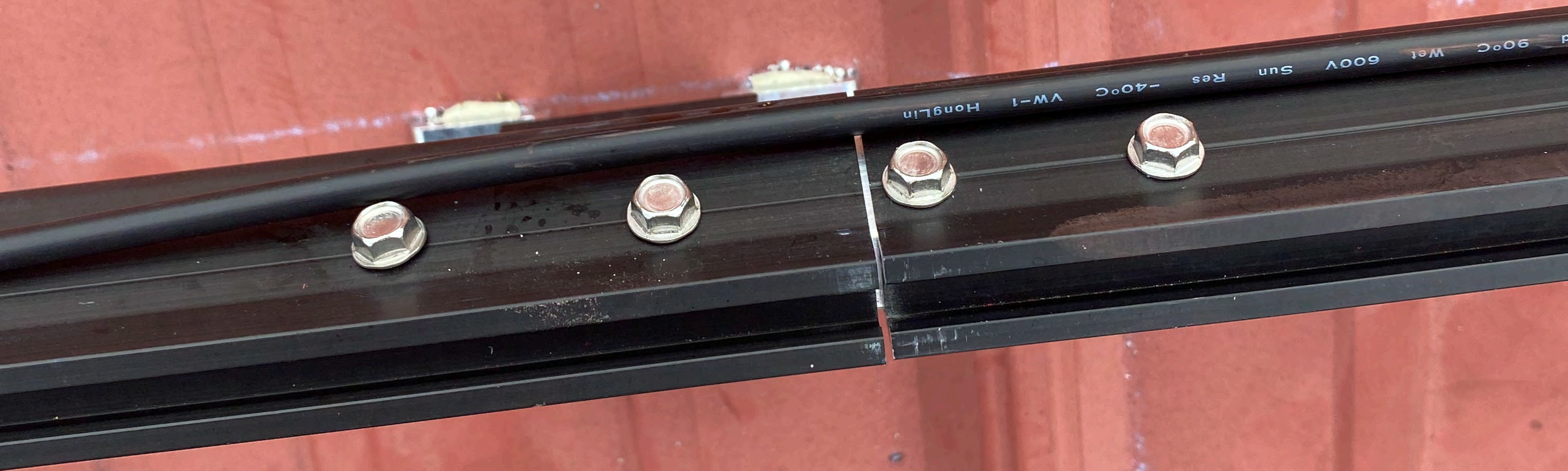
ELECTRIC SHOCK HAZARD. THE DC CONDUCTORS OF THIS PHOTOVOLTAIC SYSTEM ARE UNGROUNDED AND MAY BE ENERGIZED.

AVERTISSEMENT

RISQUE DE CHOC ELECTRIQUE: QUAND LE CHAMP PHOTOVOLTAIQUE EST EXPOSE A LA LUMIERE, UNE TENSION CC EST FOURNIE A CET EQUIPEMENT.
SURFACES CHAUDES: NE PAS TOUCHER, AFIN DE REDUIRE LES RISQUES DE BRULURES LE COURANT DE RETOUR INJECTE PAR LE CONVERTISSEUR EN CAS DE DEFAILLANCE DANS LE MODULE PV EST TOUJOURS NUL.







90°C Wet 600V Sun Res -40°C VW-1 HongLin





Do Not Remove
Cover

CAUTION
DO NOT TOUCH THE OPTIMIZER OR THE DC CONDUCTORS OF THIS PHOTOVOLTAIC SYSTEM. CONTACT WITH THE OPTIMIZER OR THE DC CONDUCTORS OF THIS PHOTOVOLTAIC SYSTEM CAN CAUSE SEVERE BURNS OR ELECTRICAL SHOCK. ALWAYS WEAR APPROPRIATE SAFETY GEAR AND FOLLOW THE SAFETY PROCEDURES OF THE PHOTOVOLTAIC SYSTEM. ALWAYS DISCONNECT THE OPTIMIZER FROM THE PHOTOVOLTAIC SYSTEM BEFORE MAINTENANCE OR REPAIR WORK. ALWAYS WEAR APPROPRIATE SAFETY GEAR AND FOLLOW THE SAFETY PROCEDURES OF THE PHOTOVOLTAIC SYSTEM.

WARNING
ELECTRIC SHOCK HAZARD: THE DC CONDUCTORS OF THIS PHOTOVOLTAIC SYSTEM ARE ENERGIZED AND MAY BE HOT TO TOUCH. ALWAYS WEAR APPROPRIATE SAFETY GEAR AND FOLLOW THE SAFETY PROCEDURES OF THE PHOTOVOLTAIC SYSTEM. ALWAYS DISCONNECT THE OPTIMIZER FROM THE PHOTOVOLTAIC SYSTEM BEFORE MAINTENANCE OR REPAIR WORK. ALWAYS WEAR APPROPRIATE SAFETY GEAR AND FOLLOW THE SAFETY PROCEDURES OF THE PHOTOVOLTAIC SYSTEM.

AVERTISSEMENT
DANGER: RISQUE DE CHOC ÉLECTRIQUE. LES CONDUCTEURS EN COURANT CONTINU DE CE SYSTÈME PHOTOVOLTAÏQUE SONT ÉNERGÉTIQUES ET PEUVENT ÊTRE TRÈS CHAUDS AU TOUCHER. TOUJOURS PORTER LE MATÉRIEL DE PROTECTION ADÉQUAT ET SUIVRE LES PROCÉDURES DE SÉCURITÉ DU SYSTÈME PHOTOVOLTAÏQUE. TOUJOURS DÉCONNECTER L'OPTIMISATEUR DU SYSTÈME PHOTOVOLTAÏQUE AVANT DE FAIRE DES TRAVAUX D'ENTRETIEN OU DE RÉPARATION. TOUJOURS PORTER LE MATÉRIEL DE PROTECTION ADÉQUAT ET SUIVRE LES PROCÉDURES DE SÉCURITÉ DU SYSTÈME PHOTOVOLTAÏQUE.









CAUTION
HOT SURFACE TO REDUCE THE RISK OF
BURNS DO NOT TOUCH.
RISK OF ELECTRIC SHOCK IS REDUCED TO
A MINIMUM BY THE PROPER WIRING TO
EQUIPMENT. ALWAYS USE THE CORRECT WIRING
DURING FAULT. ZERO CURRENT IS SOURCE TO DC ARRAY BY CONVERTER.

WARNING ELECTRIC SHOCK HAZARD. THE DC CONDUCTORS OF THIS PHOTOVOLTAIC SYSTEM ARE UNGROUNDING AND MAY BE ENERGIZED.
RISQUE DE CHOC ELECTRIQUE. LE CHAMP PHOTOVOLTAÏQUE EST EXPOSÉ À LA HAUTE TENSION.
LES CONDUCTEURS DE CE SYSTÈME PHOTOVOLTAÏQUE SONT NON MISE À LA TERRE ET PEUVENT ÊTRE ÉNERGÉTIQUES.
DANGER D'ÉLECTROCUTION. LE CHAMP PHOTOVOLTAÏQUE EST EXPOSÉ À LA HAUTE TENSION.
LES CONDUCTEURS DE CE SYSTÈME PHOTOVOLTAÏQUE SONT NON MISE À LA TERRE ET PEUVENT ÊTRE ÉNERGÉTIQUES.



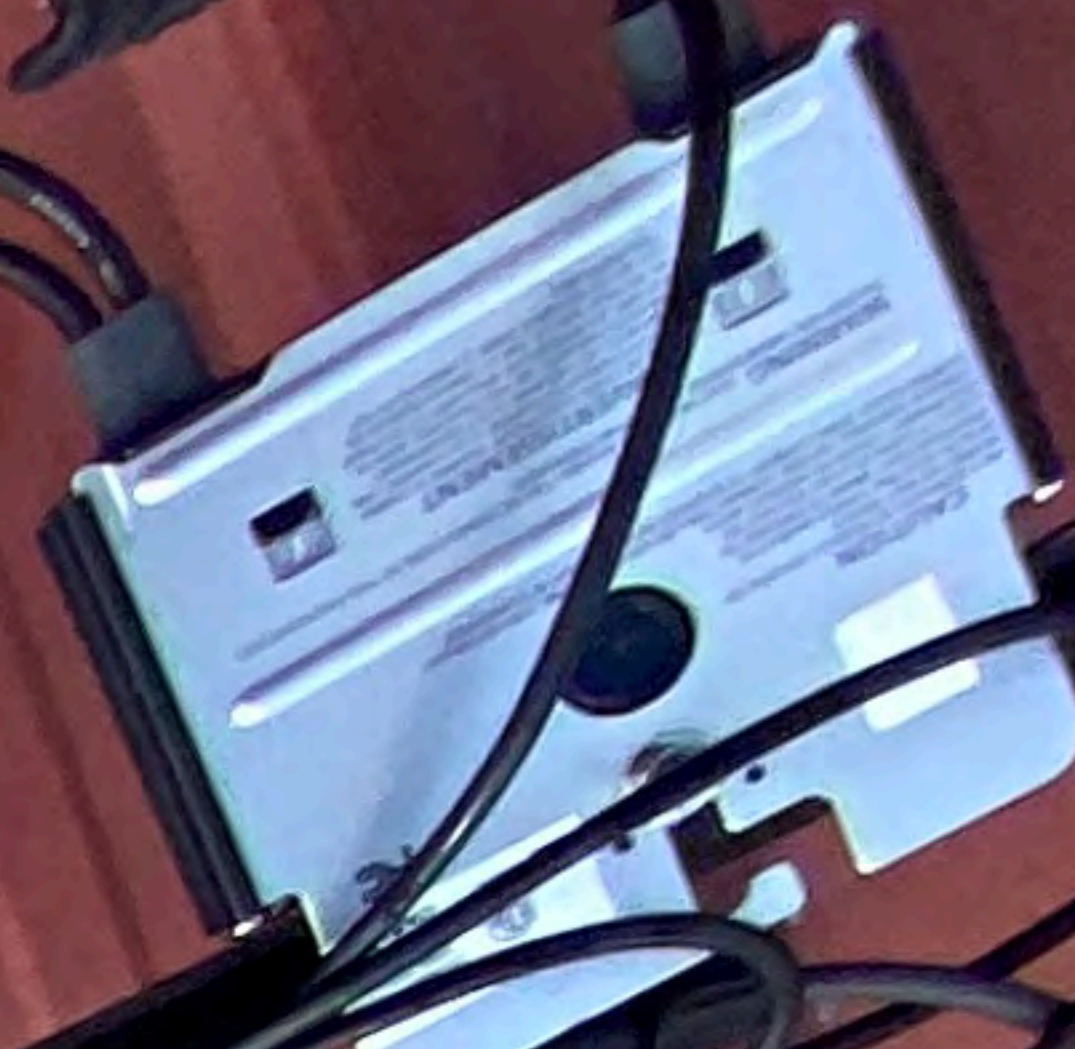




10 AWG (10) PHOTON
10 AWG (10) PHOTON



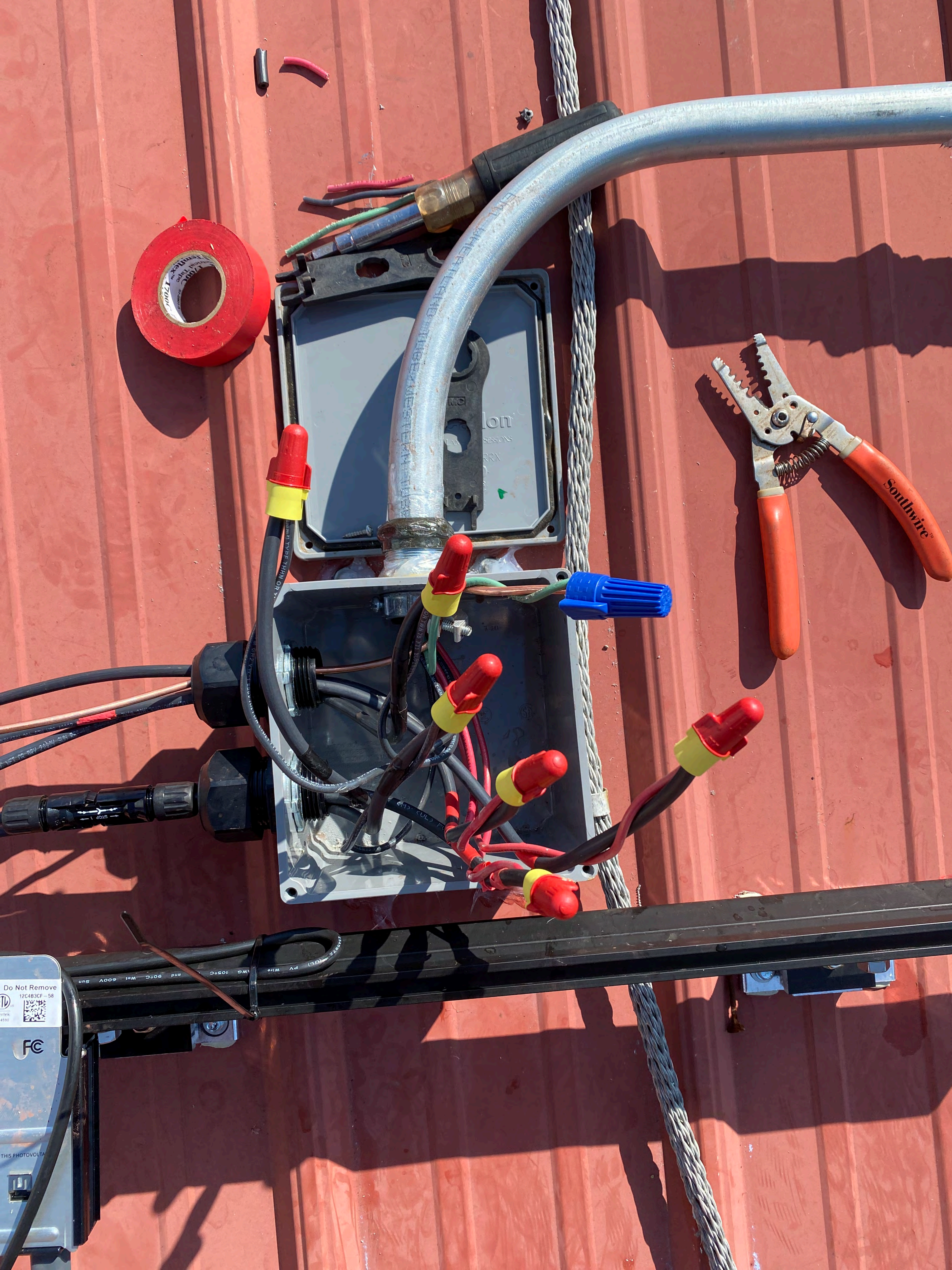
18 AWG (UL) PHOTO
18 AWG (UL) PHOTO



WARNING: PHOTOVOLTAIC
POWER SOURCE









Lott

ENCORE WIRE CORP. 10 AMP 15-20VDC

E 5316484

CTD - (1) 100

OR (1) 100





DR DRY 2000V SUN RES-40C RHM/RHM-2 DIRECT BURIAL 15.08.2019 01. 00672 FEET E505201

Do Not Remove
12C4B26-F4

SOUTH BAY

E3458972

52

PHOTOVOLTAIC
SOURCE

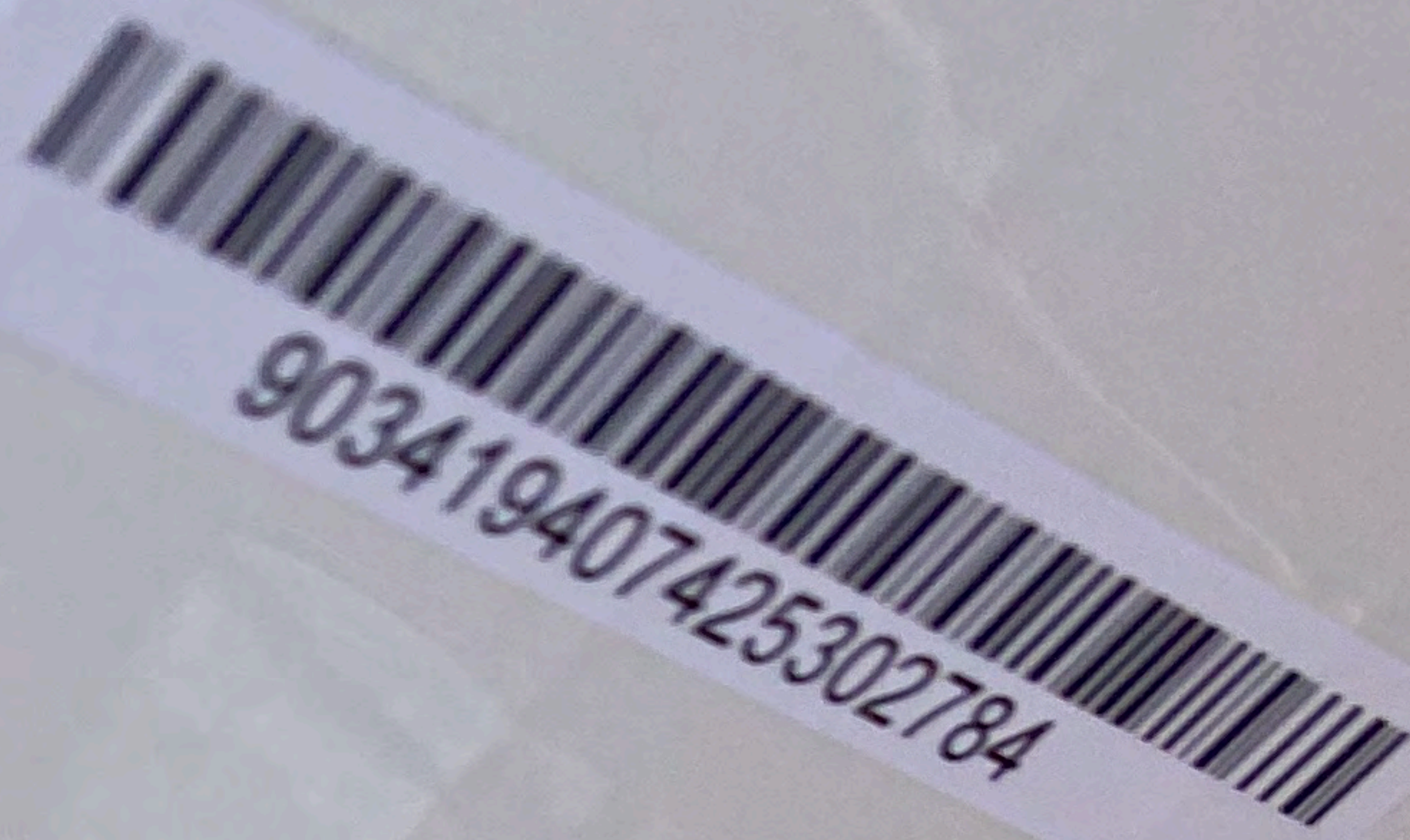
CAUTION
HOT SURFACES TO REDUCE THE RISK OF
BURNS-DO NOT TOUCH
RISK OF ELECTRIC SHOCK WHEN THE
PHOTOVOLTAIC ARRAY IS EXPOSED TO
LIGHT. IT SUPPLIES A DC VOLTAGE TO
EQUIPMENT. COVER P.V. MODULE WITH
OPAQUE MATERIAL BEFORE CONNECTING OR
DISCONNECTING THIS OPTIMIZER
DURING FAULT. ZERO CURRENT IS SOURCED INTO DC ARRAY BY CONVERTER.

WARNING ELECTRIC SHOCK HAZARD. THE DC CONDUCTORS OF THIS PHOTOVOLTAIC
SYSTEM ARE UNGROUNDED AND MAY BE ENERGIZED.

AVERTISSEMENT
RISQUE DE CHOC ELECTRIQUE QUAND LE CHAMP
PHOTOVOLTAIQUE EST EXPOSE A LA LUMIERE.
TENSION CC EST FOURNIE A CET EQUIPEMENT.
SURFACES CHAUDES. NE PAS TOUCHER. UNE
RENDRE LES RISQUES DE BRULURES LE CAS DE
DE RETOUR INJECTE PAR LE CONVERTISSEUR
CAS DE DEFAILLANCE PAR LE CONVERTISSEUR
TOUJOURS NUL.

FC





903419407425302784

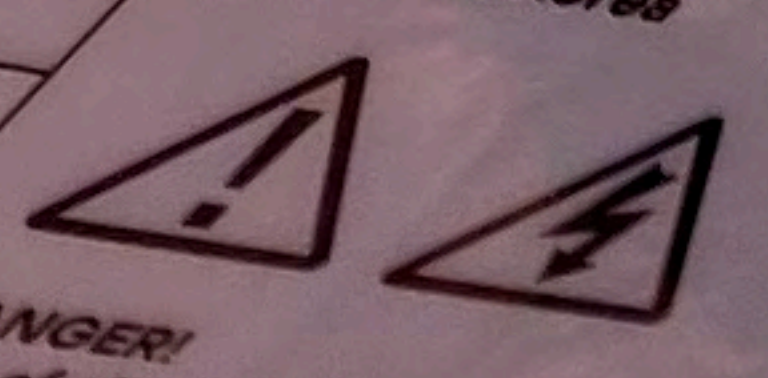
ENGINEERED, DESIGNED AND QUALITY TESTED BY Q CELLS IN GERMANY
Q.PEAK DUO BLK-G6+ 330

PERFORMANCE AT STANDARD TEST CONDITIONS*

Nominal Power* (+5W/-0W)	P_{MPP}	[W]	330
Short circuit current*	I_{sc}	[A]	10.41
Open circuit voltage*	V_{oc}	[V]	40.15
Current at maximum power	I_{MPP}	[A]	9.91
Voltage at maximum power	V_{MPP}	[V]	33.29
Maximum system voltage	V_{sys}	[V]	1000(IEC) 1000(UL)
Weight	M	[kg/lbs]	19.9 / 43.9

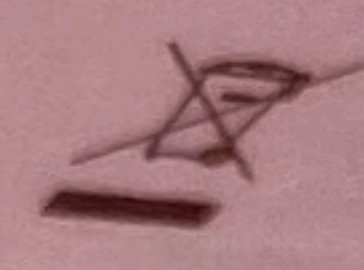
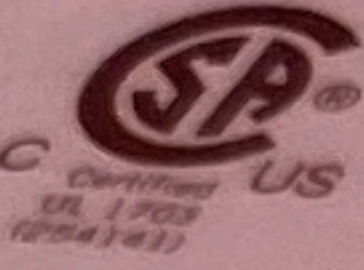
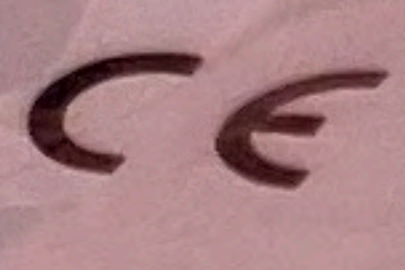
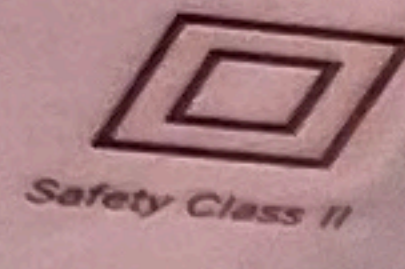
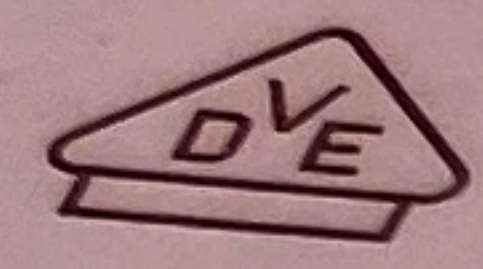
Q CELLS

Made in Korea



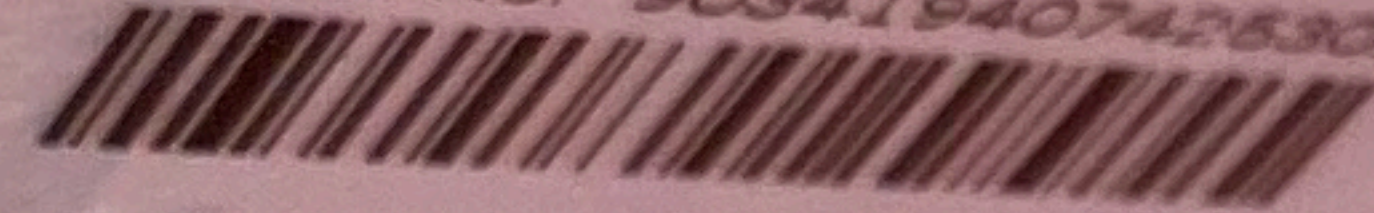
DANGER!
Risk of electric shock!
DO NOT connect or disconnect
plug contacts while system is
under load current. Refer to the
Installation and Operation Manual
or before installing, operating or
servicing this unit.

*Measurement tolerances: $P_{MPP} \pm 3\%$; I_{sc} , $V_{oc} \pm 5\%$ at STC: 1000 W/m², 25 ± 2 °C, AM 1.5 according to IEC 60904-3. Data given are rated (nominal) values.



DANGER!
Disque de danger électrique!
NE PAS connecter ou déconnecter
les contacts sous charge.
Consultez le manuel d'installation
ou d'opération avant installation,
utilisation ou entretien de l'unité.

Serial No. 903419407425302784



Namha Q CELLS Advanced Materials Corporation
202 Sansaengri 2-ro, Incheon, Incheon-gu,
Chungcheongbuk-do, Republic of Korea, 27812