



PHOTO
R SO

PHOTO
R SO

240-2
NLGA R1/4





CAUTION
Do Not Remove
FC

AVERTISSEMENT
Ne pas enlever

SCREWS Int'l Corp
17859
File # E493748







QR CODES

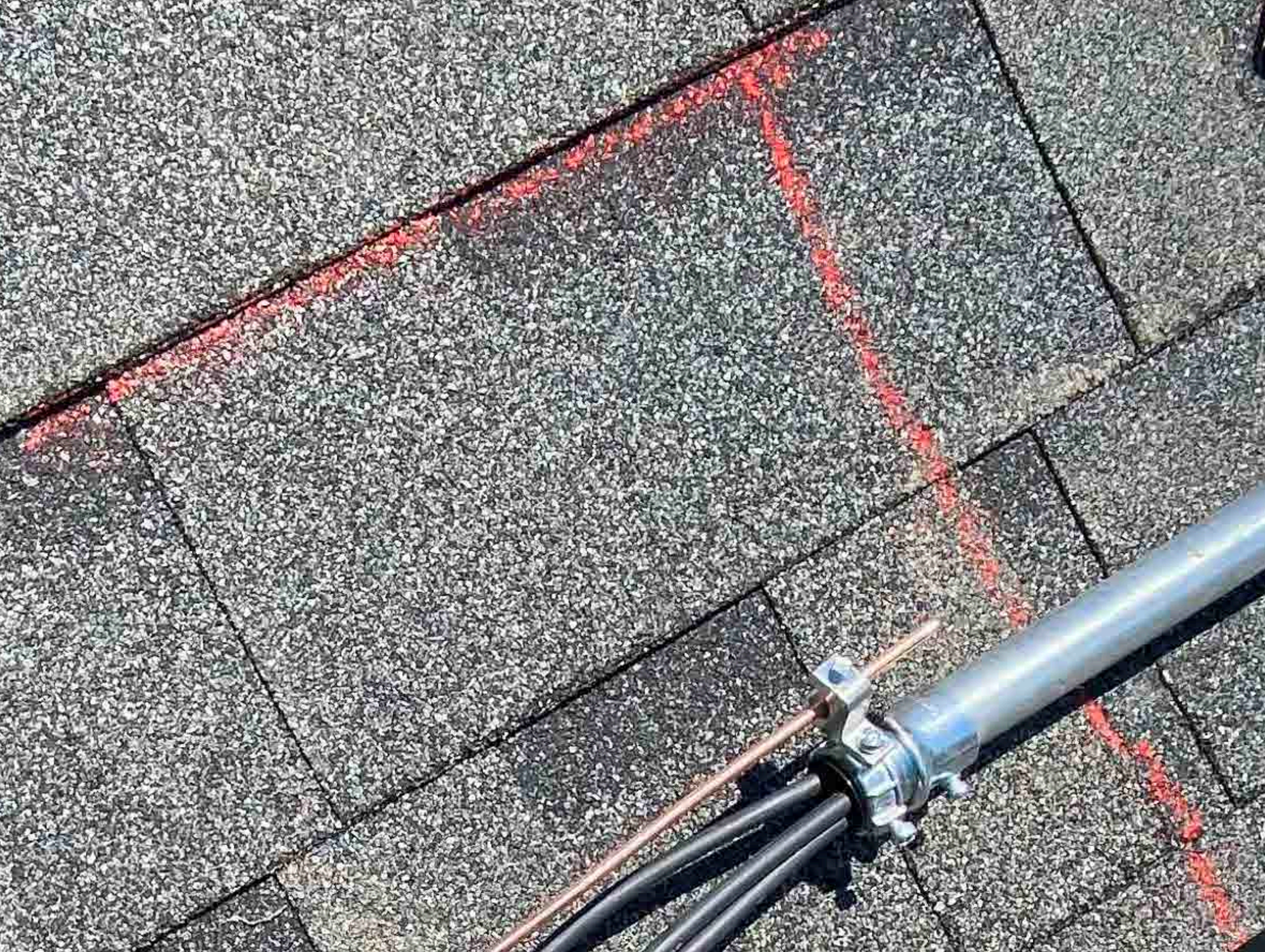
1 2 3 4 5 6 7 8 9 10 11 12 13 14 15 16 17 18 19 20 21



2015 BATTERY BACKUP SYSTEM
CAUTION
WARNING
AVERTISSEMENT
FC



CAUTION
DO NOT REMOVE
COVER AT
ANY TIME
DURING
OPERATION
OR
REPAIRS
WARNING
DO NOT REMOVE
COVER AT
ANY TIME
DURING
OPERATION
OR
REPAIRS
AVERTISSEMENT
NE PAS ENLEVER
LE COUVERCLE
À AUCUN MOMENT
PENDANT
L'UTILISATION
OU
LES RÉPARATIONS





Do Not Remove

P330-3NC-6845 NVR AL
 Q/N: 500194-85297826-4E

FC

CAUTION
 NOT ADJUSTED TO REDUCE THE RISK OF
 BURNS DO NOT TOUCH
 RISK OF ELECTRIC SHOCK WHEN THE
 PHOTOVOLTAIC ARRAY IS EXPOSED TO
 LIGHT IT SUPPLIES A DC VOLTAGE TO
 EQUIPMENT. COVER ANY EXPOSED WIRING
 OR OTHER MATERIAL BEFORE CONNECTING OR DISCONNECTING THIS EQUIPMENT.
 WARNING: CALL A ZERO CURRENT TO SOURCE WITH AN ARRAY OF CONDUCTOR.

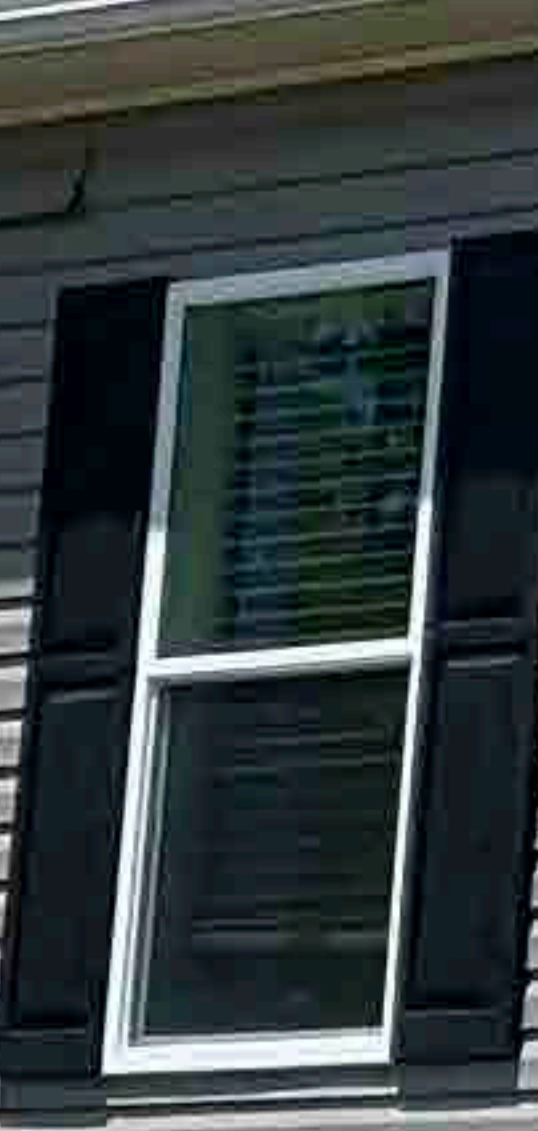
WARNING ELECTRIC SHOCK HAZARD: THE DC CONNECTIONS OF THIS PHOTOVOLTAIC
 SYSTEM ARE UNGROUNDING AND MAY BE ENERGIZED.

AVERTISSEMENT
 RISQUE DE CHOC ELECTRIQUE: QUAND LE CABLE
 PHOTOVOLTAIQUE EST EXPOSE A LA LUMIERE, UNE
 TENSION SE EST FOURNIE A L'EQUIPEMENT.
 REVERSEZ LES RIGIDES DE BRANCHE ET COUVREZ
 DE SECOUR MARCHÉ PAR LE CONDUCTEUR EN
 CAS DE DÉBRANCHÉ DANS LE MODULE PV EST
 CONNEXIONNEL.

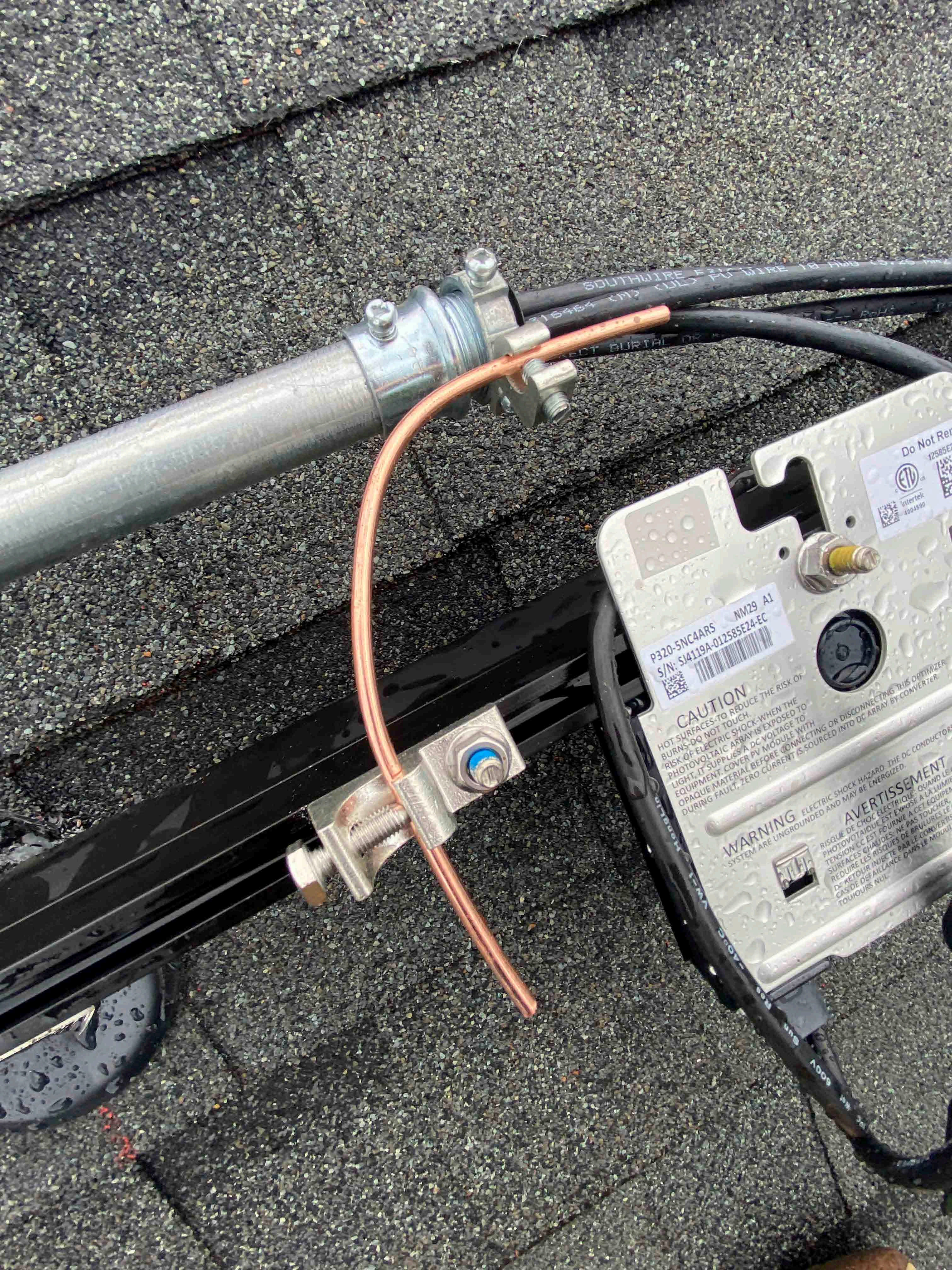
M18 RED LITHIUM
 XC3.0



Do not disconnect
under load







P320-5NCAARS NM29 A1
S/N: SJ4119A-012585E24-EC

Do Not Re...
12585E...
ETL
Intertek
4004590

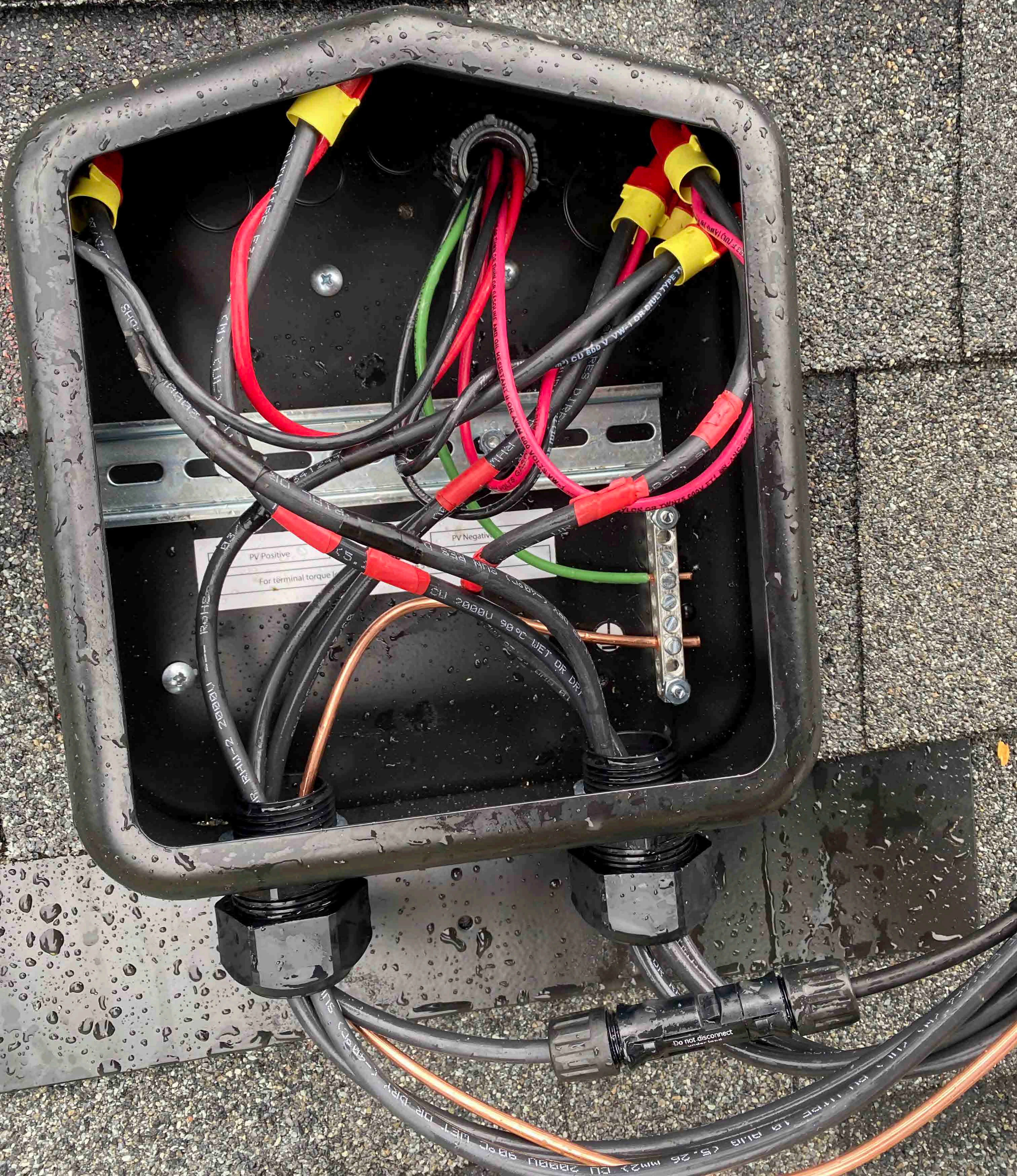
CAUTION
HOT SURFACES TO REDUCE THE RISK OF BURNS-DO NOT TOUCH.
RISK OF ELECTRIC SHOCK WHEN THE PHOTOVOLTAIC ARRAY IS EXPOSED TO LIGHT, IT SUPPLIES A DC VOLTAGE WITH EQUIPMENT. COVER PV MODULE WITH OPAQUE MATERIAL BEFORE CONNECTING OR DISCONNECTING THIS OPTIMIZER DURING FAULT. ZERO CURRENT IS SOURCED INTO DC ARRAY BY CONVERTER.

WARNING ELECTRIC SHOCK HAZARD- THE DC CONDUCTOR SYSTEM ARE UNGROUNDED AND MAY BE ENERGIZED.
AVERTISSEMENT
RISQUE DE CHOC ELECTRIQUE- QUAND LE PHOTOVOLTAIQUE EST EXPOSE A LA LUMIERE, IL FOURNIT UNE TENSION CC EST FOURNIE A CET EQUIPEMENT. NE PAS TOUCHER LES SURFACES CHAUDES- NE PAS TOUCHER LES SURFACES CHAUDES- NE PAS TOUCHER. REQUERE LES RISQUES DE BRULURES EN CAS DE DEFILANCE PAR LE CONVERTISSEUR. CAS DE DEFILANCE DANS LE MODULE, LE COURANT EST TOUJOURS NUL.

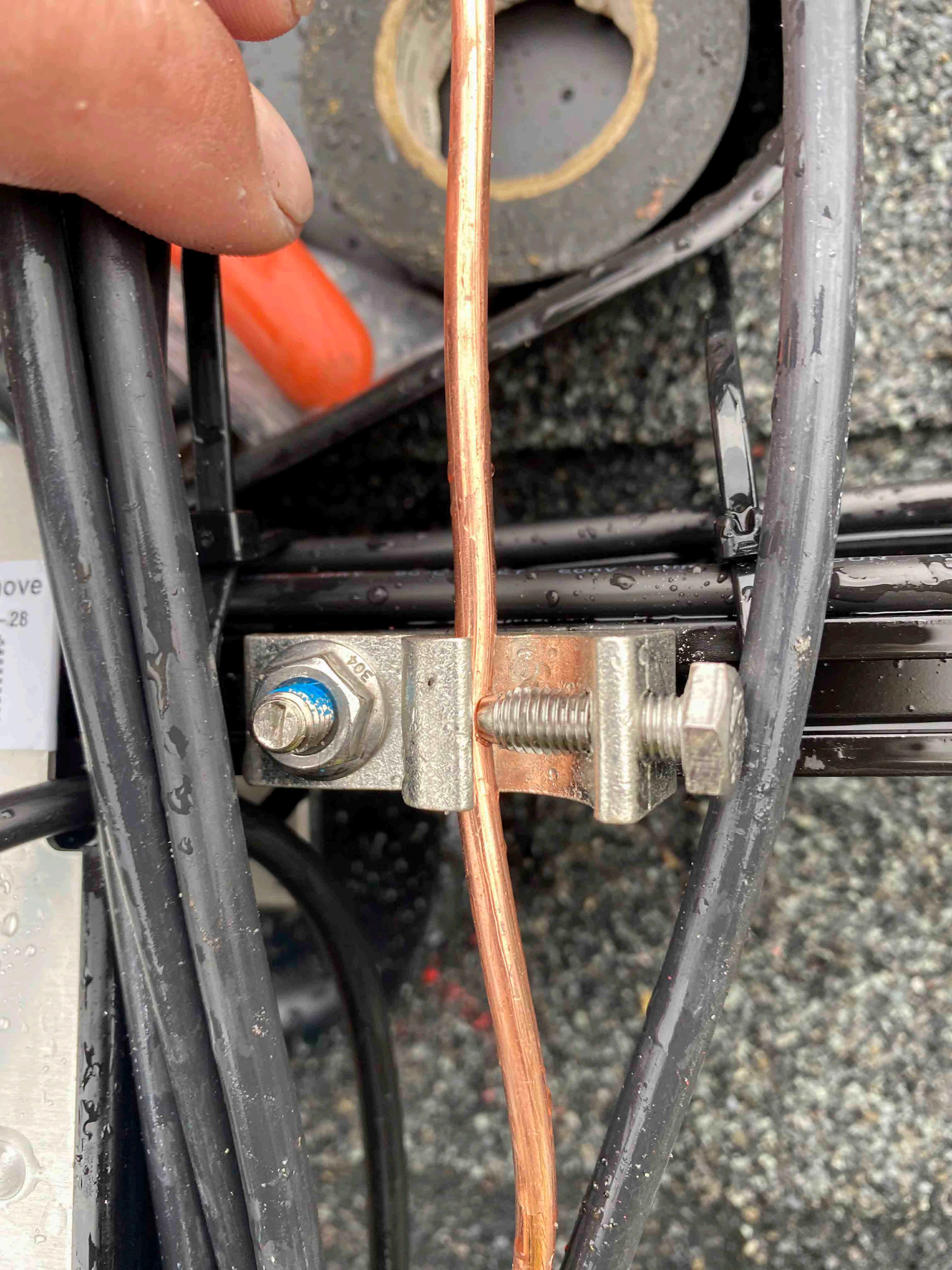
SOUTHWIRE F... WIRE 18 AWG 600V
15454 CM2 (UL)
ECT BURIAL DE



600V







ove
-28







page 5 of Instruction manual

0	PV Negative
	Neutral

WELT-DIREKT

REC N-Peak Black Series
 REC320NP Black
 Serial Number: FBB-2008843654

Power Output (Pmax)	320 W
Wall Class Sorting	0+3 W
Power Production Tolerance	+/-3 %
Rated Voltage (Vmp)	34.2 V
Open Circuit Voltage (Voc)	40.3 V
Short Circuit Current (Isc) (+/- 0%)	10.32 A
Maximum System Voltage (Vsys)	1000 V
Maximum Series Fuse (DC) (UL)	25 A
Maximum Series Fuse (DC) (IEC)	25 A
Design Load (Safety Factor 1.5)	+4666 Pa*
Maximum Test Load	+7000 Pa / -2400 Pa*

* Values at STC: 1000 W/m² AM 1.5, cell temp 25°C

Warning electrical hazard. This module produces electricity when exposed to light. Failure or disconnection may cause the module to become a high voltage source. Only qualified personnel should install or perform maintenance on this module. Do not damage or scratch the rear surface of the module. Do not handle or service the module when it is hot. Refer to the installation and operation manuals before installing.

Avvertimento: Rischio di shock elettrico. Ce module generează electricitate când este expus la lumină. Eșecul sau deconectarea poate cauza module să devină sursă de înaltă tensiune. Doar personal calificat trebuie să instaleze sau să efectueze întreținerea pe acest module. Nu deteriorați sau zgâriați suprafața din spate a modulei. Nu manipulați sau serviți modulele când sunt încălzite. Consultați manualul de instalare și de operare înainte de a instala.

CAUTION: DO NOT DISCONNECT UNDER LOAD
 ATTENTION: NE PAS DECONNECTER SOUS TENSION
 REC Solar Energy Systems Pte. Ltd.
 307, SOUTH AVENUE 14, SINGAPORE 637112, SINGAPORE

SP US
 DYE
 CE
 Manufactured 01.08.2020



REC

REC N-Peak Black Series

REC320NP Black

Serial Number: FBB-2008643654

Phone: +65 6495 9228
www.recgroup.com

Power Output (Pmax)	320 W
Watt Class Sorting	0/+5 W
Power Production Tolerance	+/- 3 %
Rated Voltage (Vmpp)	34.2 V
Rated Current (Impp)	9.37 A
Open Circuit Voltage (Voc) (+/- 3%)	40.3 V
Short Circuit Current (Isc) (+/- 3%)	10.22 A
Maximum System Voltage (Vsys)	1000 V
Maximum Series Fuse (DC) (UL)	25 A
Maximum Series Fuse (DC) (IEC)	25 A
Design Load (Safety Factor 1.5)	+4666 Pa*
Maximum Test Load	+7000 Pa / -2400 Pa*

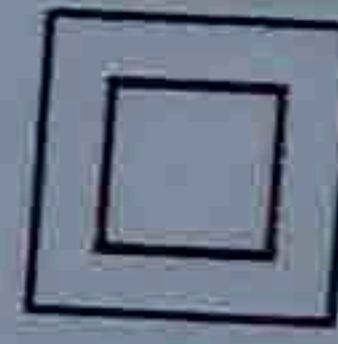
(Values at STC: 1000 W/m² AM 1.5, cell temp 25°C)



UL Fire Rating Type 2



IEC 61215
IEC 61730



Application Class: Safety Class II

Manufactured: 01.06.2020

See installation manual for *) mechanical installation requirements and
+) installation requirements to achieve a specified system fire class

Warning electrical hazard. This module produces electricity when exposed to light. Follow all applicable electricity safety precautions. Only qualified personnel should install or perform maintenance work on the module. Be aware of dangerous high DC voltage when connecting or disconnecting modules. Do not damage or scratch the rear surface of the module. Do not handle or install modules when they are wet. Refer to installation and operation manuals before installing, servicing or operating this unit.

Avertissement: Risque de choc électrique. Ce module solaire produit de l'électricité lorsqu'il est exposé à la lumière. Respecter toutes les précautions de sécurité applicables. L'installation, la mise en service, l'entretien et la réparation du module, doivent être réalisés que par du personnel qualifié. Attention aux éléments sous haute-tension CC pendant la connexion ou déconnexion des modules. Eviter d'endommager la surface arrière du module avec des objets pointus. Ne pas manipuler ni installer les modules s'ils sont humides. Référez vous au manuel d'installation avant l'installation, l'entretien ou l'opération de cet unité.

For field connections, use min. 4 mm²(12 AWG) UL PV wires insulated for a min. of 90°C

CAUTION: DO NOT DISCONNECT UNDER LOAD
ATTENTION: NE PAS DECONNECTER SOUS TENSION

Made in Singapore by REC SOLAR PTE. LTD.
20 TUAS SOUTH AVENUE 14, SINGAPORE 637312, SINGAPORE

