

ON OFF
BATTERY DISCONNECT



GENERAC
PWR CELL

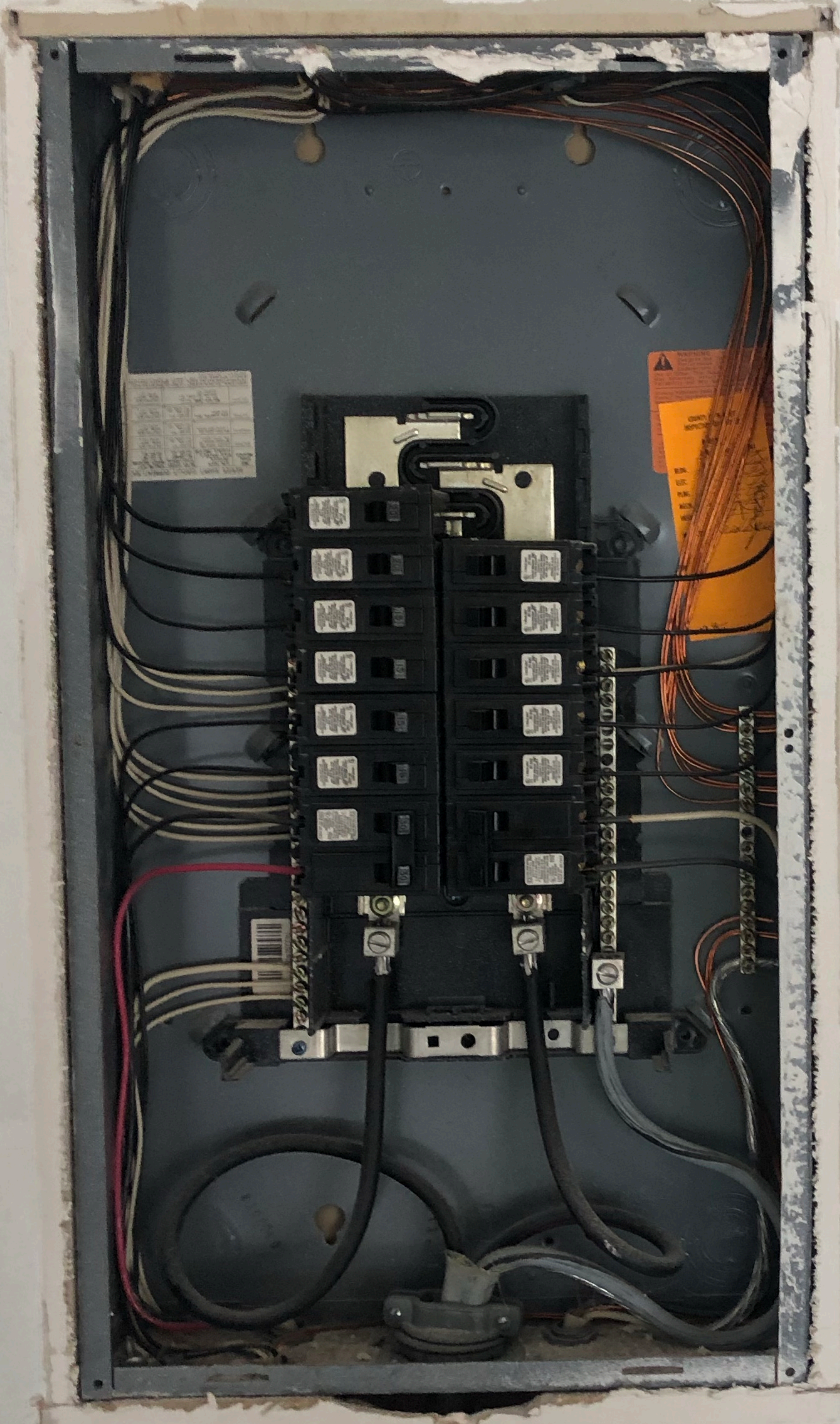








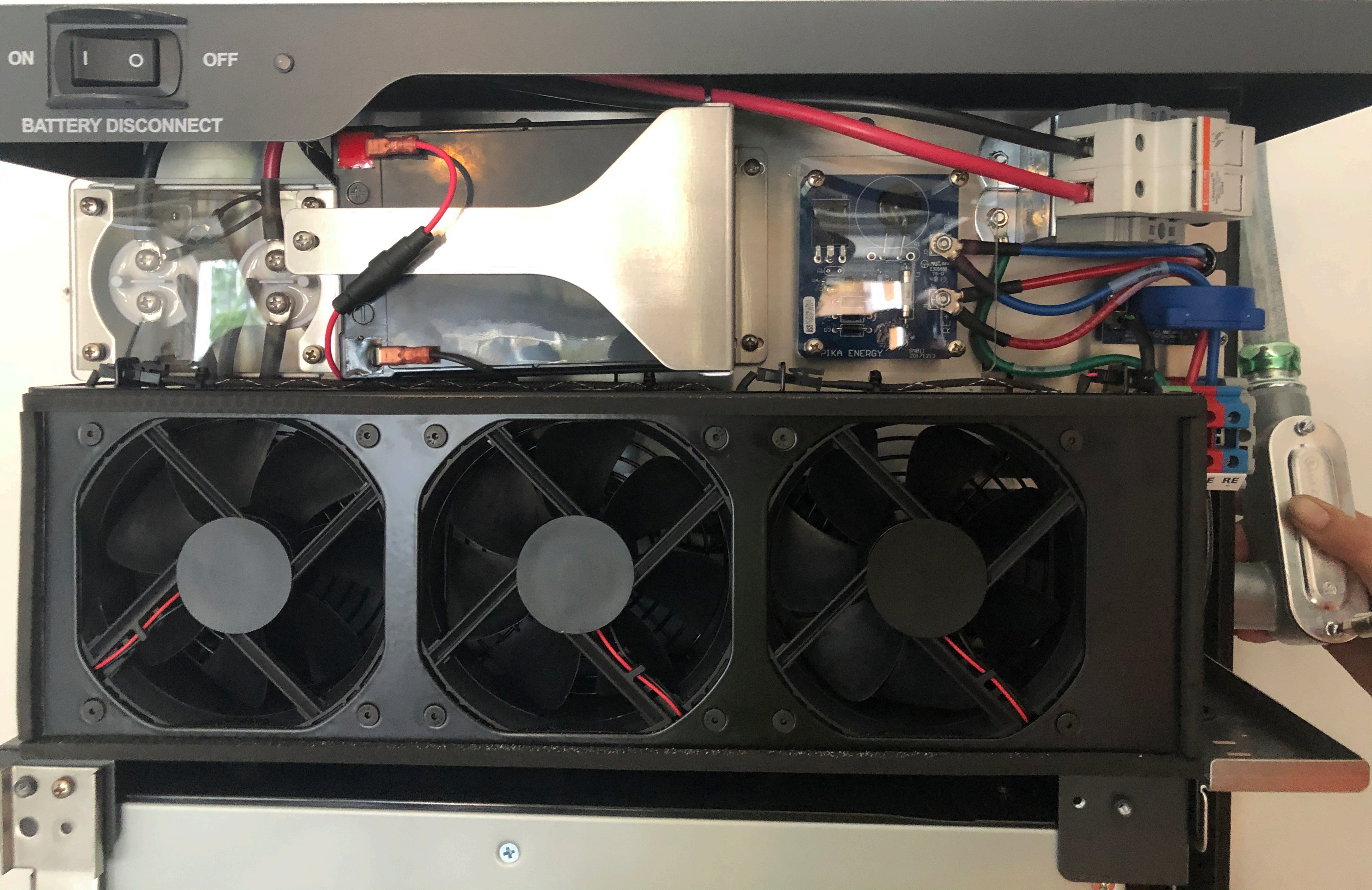








PHOTOVOLTAIC
POWER SOURCE



ON OFF
BATTERY DISCONNECT

PIKA ENERGY
SNB11
20171213

E RE

POWER CORE

ON OFF ON OFF

! Turn OFF for PV Rapid Shutdown Initiation
Disable REbus before turning back ON

RE3: RE4:

ON OFF ON OFF

RE1 RE3 RE4 RE2

FUSE LOCATION / EMPLACEMENT DU FUSIBLE

WARNING: FOR CONTINUED PROTECTION AGAINST RISK OF FIRE, REPLACE ONLY WITH SAME TYPE AND RATINGS OF FUSE.

ATTENTION: POUR LA PROTECTION CONTINUE CONTRE LES RISQUES D'INCENDIE, REMPLACER UNIQUEMENT AVEC LE MEME TYPE ET COTES DE FUSE.

DC INPUT FUSE SPECIFICATION:
40A 600V AC/DC
FERRAZ P/N: A60Q40-2

SPÉCIFICATION DE FUSIBLE D'ENTRÉE CC:
40A 600V CA/CC
FERRAZ NP: A60Q40-2

PROTECTED LOADS

ON OFF

50A 240V

AC Wiring Terminals

WARNING: ...
CAUTION: ...







GENERAC
PWR^{CELL}

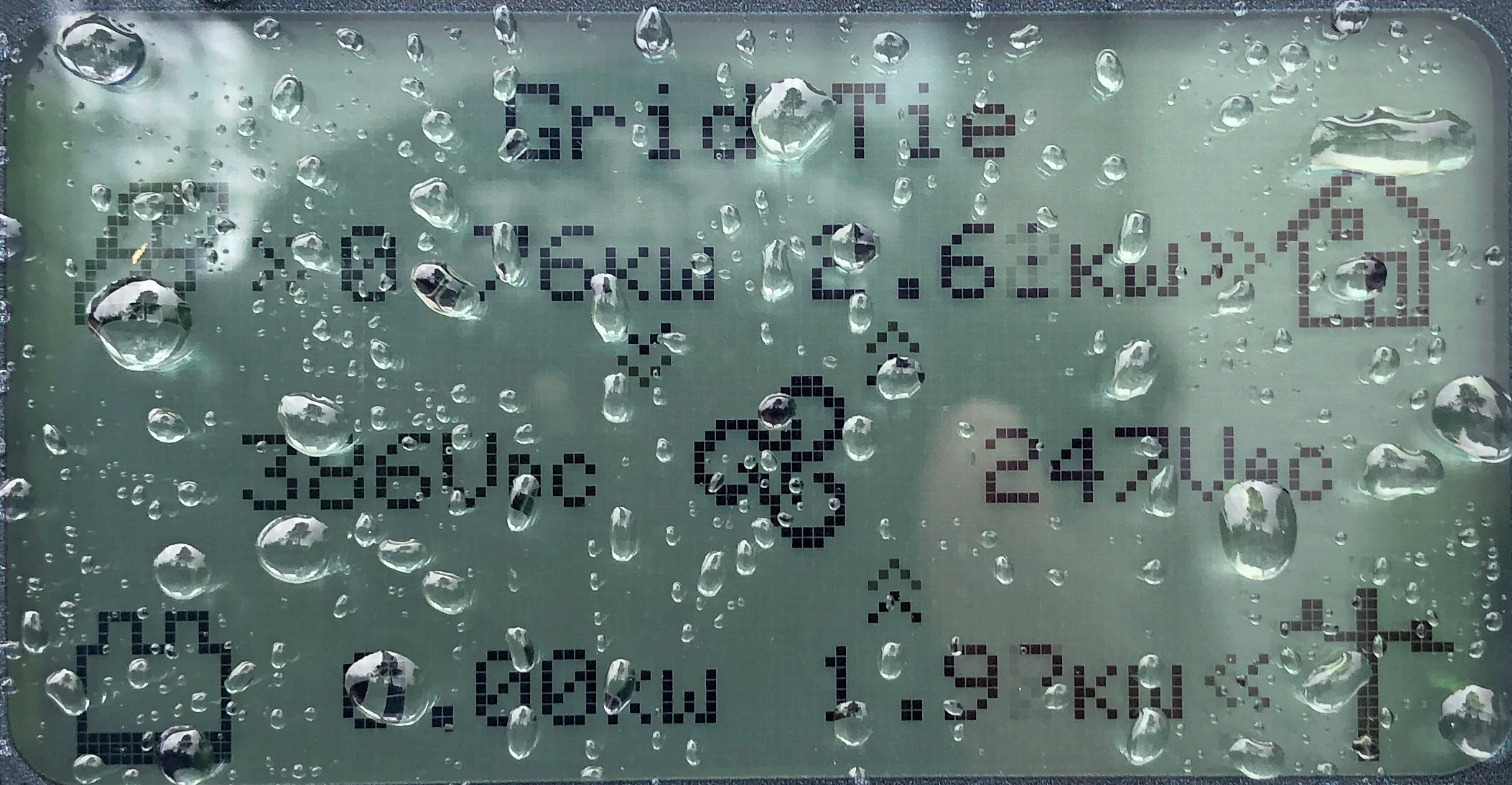
SOLAR PV SYSTEM EQUIPPED WITH SAFETY FUNCTIONS


GENERAC


E-T-N

WARNING: A
DANGER TO LIFE
PROPERTY
CAUTION: A

WARNING: A
DANGER TO LIFE
PROPERTY
CAUTION: A




REbus


Inverter



Generac Grid Support Utility Interactive Inverter

X7602 Part of the Generac PWRcell

Generac Power Systems, Inc.



Conforms to UL STD. 1741,
UL STD. 1741SA
Certified to CSA STD. C22.2 #107.1

REbus Power (max):	7600 W
REbus input voltage:	± 180-210 VDC
REbus input current:	± 20 A
Efficiency (max):	98%
AC frequency:	60hz
Rated AC output:	7600W (120/240V)
Operating AC voltage range:	108-130 VAC
Max. continuous AC current:	32 A
Max. Utility Backfeed Current:	32 A
Max. Output Fault Current:	201 A
Output power factor:	> 0.99
Ambient operating temp. (max):	50°C

Serial number:

Date of manufacture:

Manufacturing facility:


Enclosure:

X7602-03775

Q1-20

A

Type 3R

 **WARNING**
CANCER AND REPRODUCTIVE HARM - www.P65Warnings.ca.gov
100000330023