

ON OFF
BATTERY DISCONNECT



GENERAC
PWR CELL

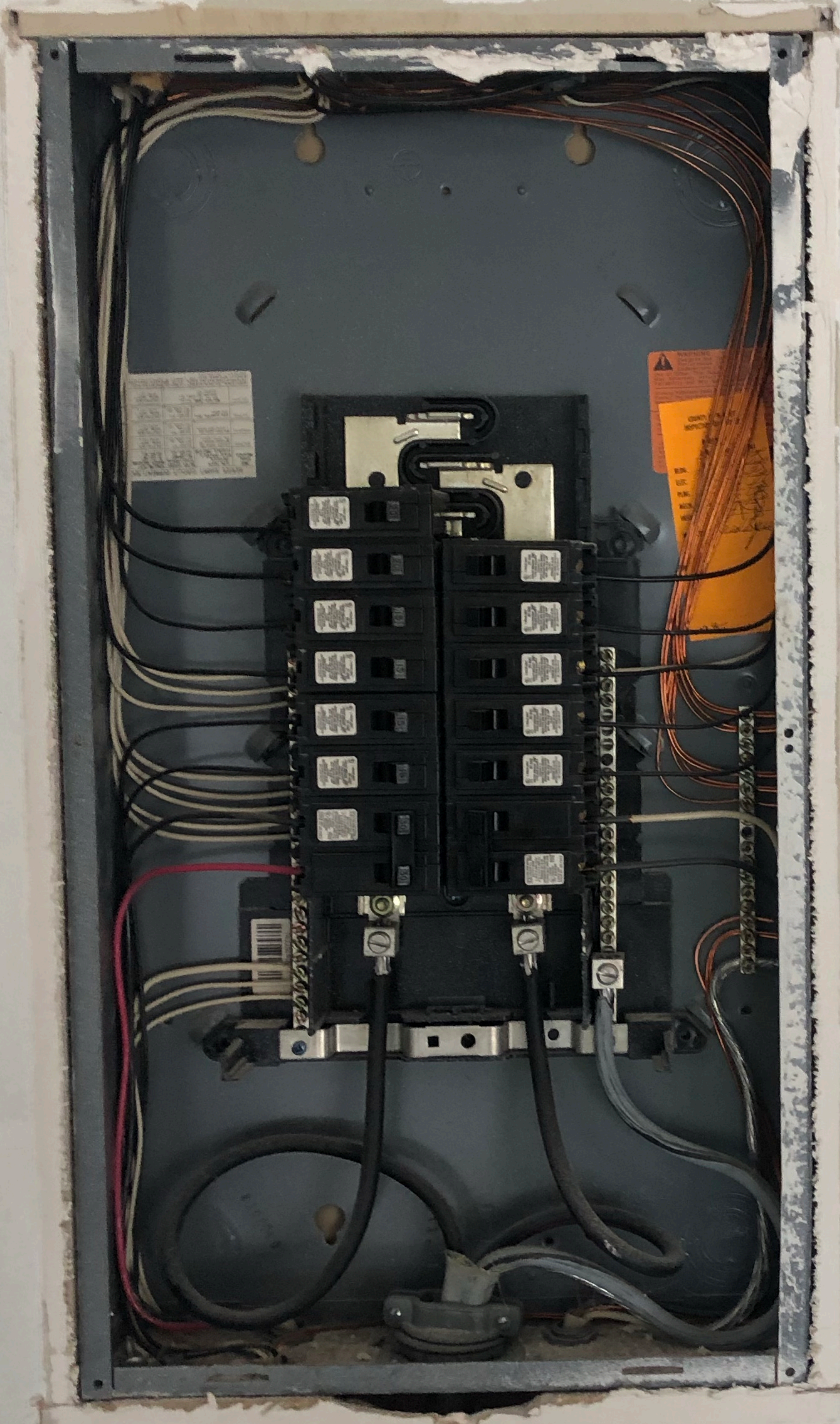








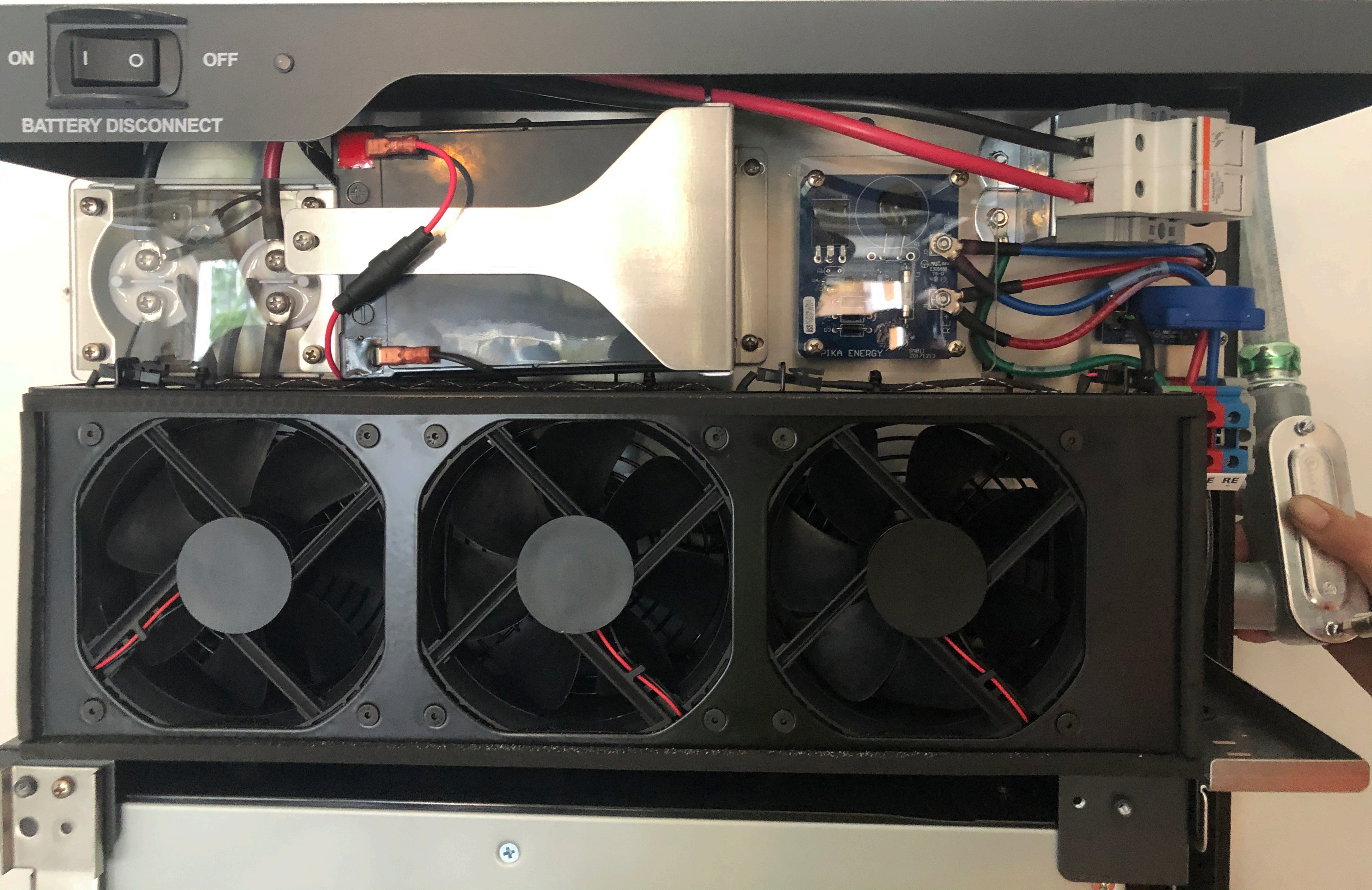








PHOTOVOLTAIC
POWER SOURCE



ON OFF

BATTERY DISCONNECT

PIKA ENERGY
SNB11
20171213

E RE

POWER CORE

ON OFF ON OFF

! Turn OFF for PV Rapid Shutdown Initiation
Disable REbus before turning back ON

RE3: ON OFF OFF OFF

RE4: ON OFF OFF OFF

RE1 RE3 RE4 RE2

FUSE LOCATION / EMPLACEMENT DU FUSIBLE

WARNING: FOR CONTINUED PROTECTION AGAINST RISK OF FIRE, REPLACE ONLY WITH SAME TYPE AND RATINGS OF FUSE.

ATTENTION: POUR LA PROTECTION CONTINUE CONTRE LES RISQUES D'INCENDIE, REMPLACER UNIQUEMENT AVEC LE MÊME TYPE ET COTES DE FUSE.

DC INPUT FUSE SPECIFICATION:
40A 600V AC/DC
FERRAZ P/N: A60Q40-2

SPÉCIFICATION DE FUSIBLE D'ENTRÉE CC:
40A 600V CA/CC
FERRAZ NP: A60Q40-2

PROTECTED LOADS

ON OFF

50A 240V

Wiring terminals and components including a fuse holder, a metal mesh shield, and a terminal block with labels N1, L1, L2, L3 (3p), N2, L1, L2.

Labels on terminal block: N1, L1, L2, L3 (3p), N2, L1, L2

Labels on AC Wiring Terminals: AC Wiring Terminals, WARNING, CAUTION







GENERAC
PWR^{cell}

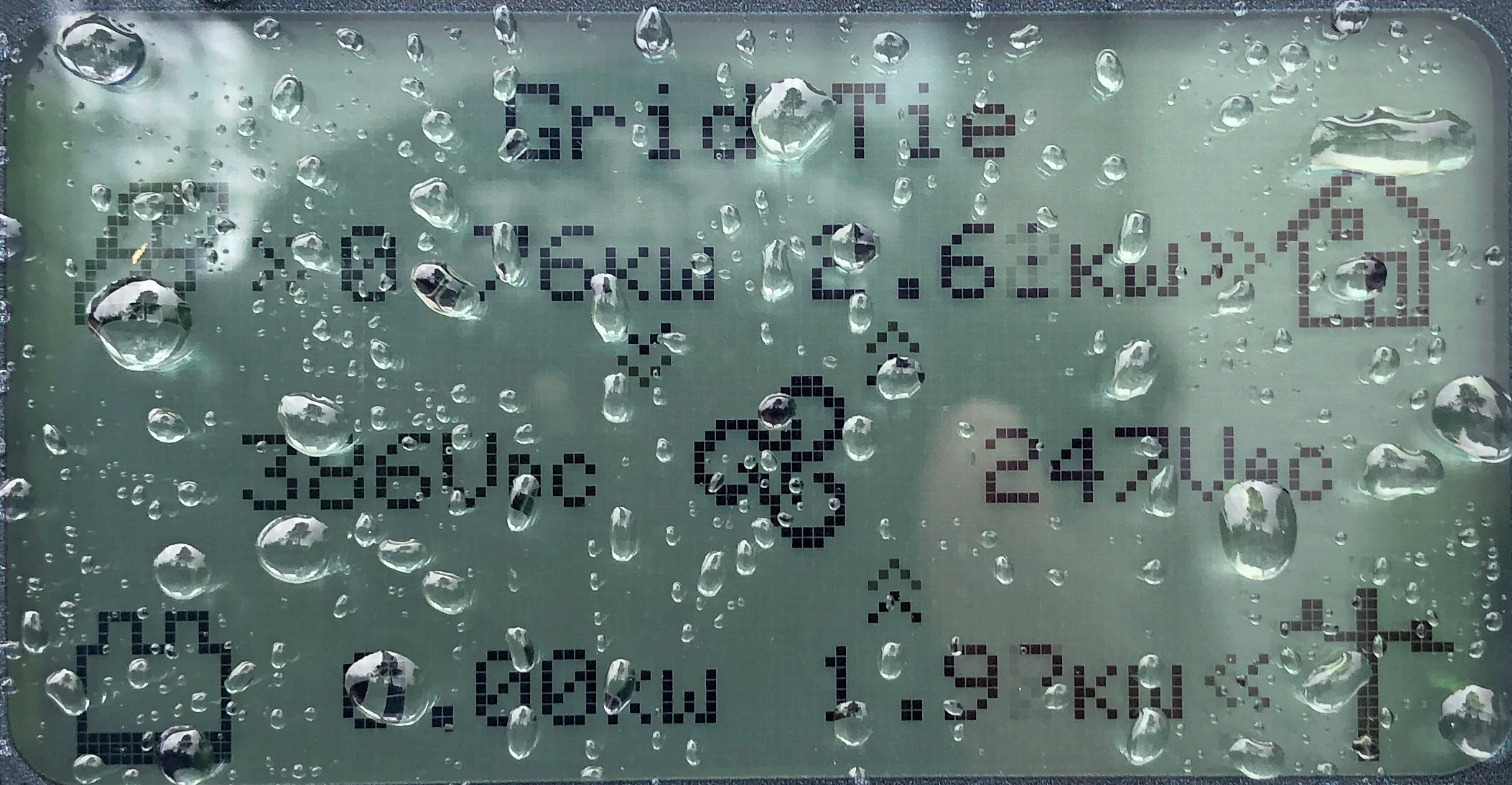
SOLAR PV SYSTEM EQUIPPED WITH SAFETY FUNCTIONS


GENERAC


E-T-N

WARNING: A
DANGER TO LIFE
PROPERTY
CAUTION: A

WARNING: A
DANGER TO LIFE
PROPERTY
CAUTION: A




REbus


Inverter

