



VICINITY MAP
NO SCALE

BEARING DISTANCE

N 32°55'55"W	51.04'
N 33°28'56"W	50.82'
N 33°59'00"W	41.84'
N 34°25'45"W	52.68'
N 35°18'10"W	63.63'

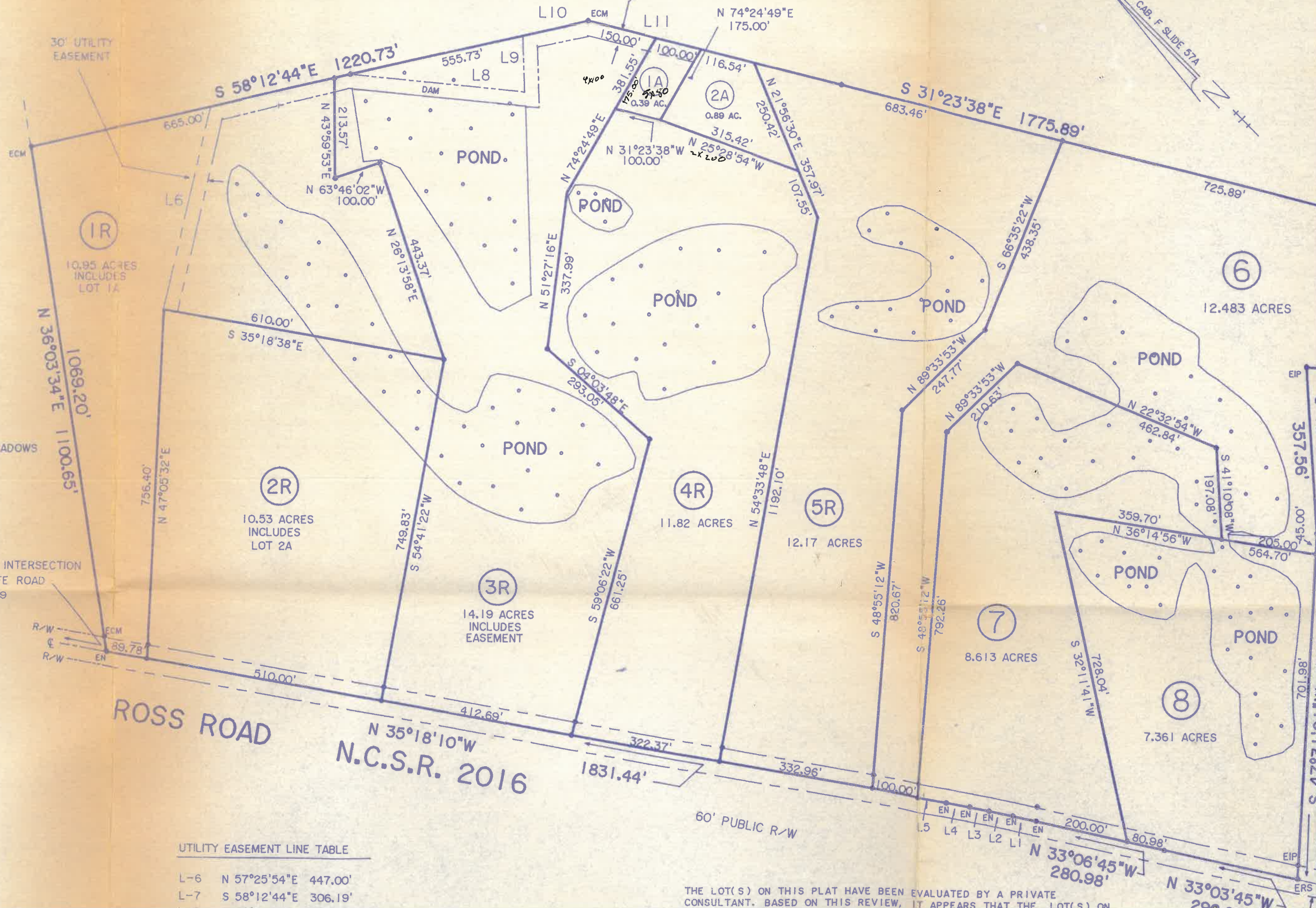
- COORDINATES
- SET AT ALL LOT CORNERS
- THE CENTERLINE OF ROAD
- SET AT LOT CORNERS IN ROAD
- SET ON R/W OF LOT LINES
- IF RERECORDING THIS PLAT IS
- SYSTEMS ON LOTS 1A & 2A

SLIDE 57A
SLIDE 339-A
SHOWN

- EXISTING CONCRETE MONUMENT
- EXISTING IRON PIPE
- EXISTING IRON STAKE
- EXISTING RAILROAD SPIKE
- EXISTING PK NAIL
- EXISTING NAIL
- PIPE SET
- STAKE SET
- ROAD SPIKE SET
- SET
- HT OF WAY
- BOOK
- OF MAPS
- TERLINE
- IMUM BUILDING SETBACK LIMIT
- ACK

N/F
HATTIE E. MEADOWS

1.0 MILE TO INTERSECTION
WITH WILDLIFE ROAD
N.C.S.R. 2069



BECKER COUNTY SAND & GRAVEL CO.
D.B. 488 PG. 243

UTILITY EASEMENT LINE TABLE

L-6	N 57°25'54"E	447.00'
L-7	S 58°12'44"E	306.19'

THE LOT(S) ON THIS PLAT HAVE BEEN EVALUATED BY A PRIVATE CONSULTANT. BASED ON THIS REVIEW, IT APPEARS THAT THE LOT(S) ON