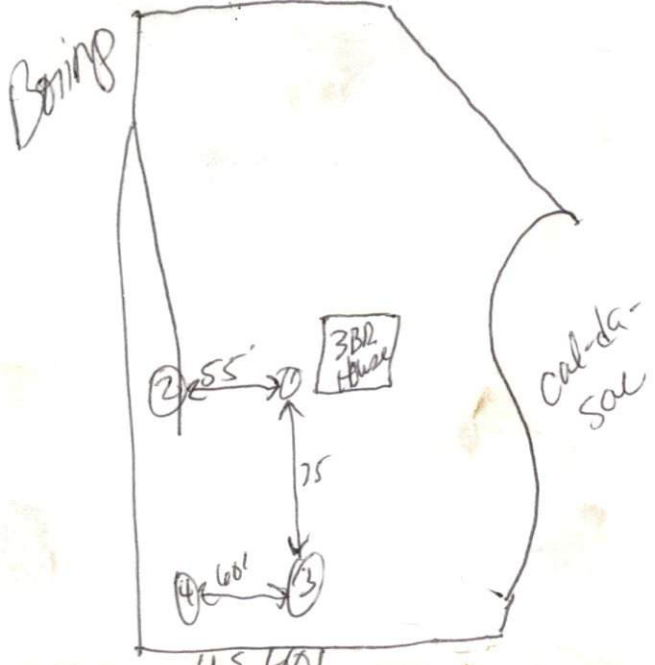


SITE OIL EVALUATION FOR ON-SITE WASTEWATER

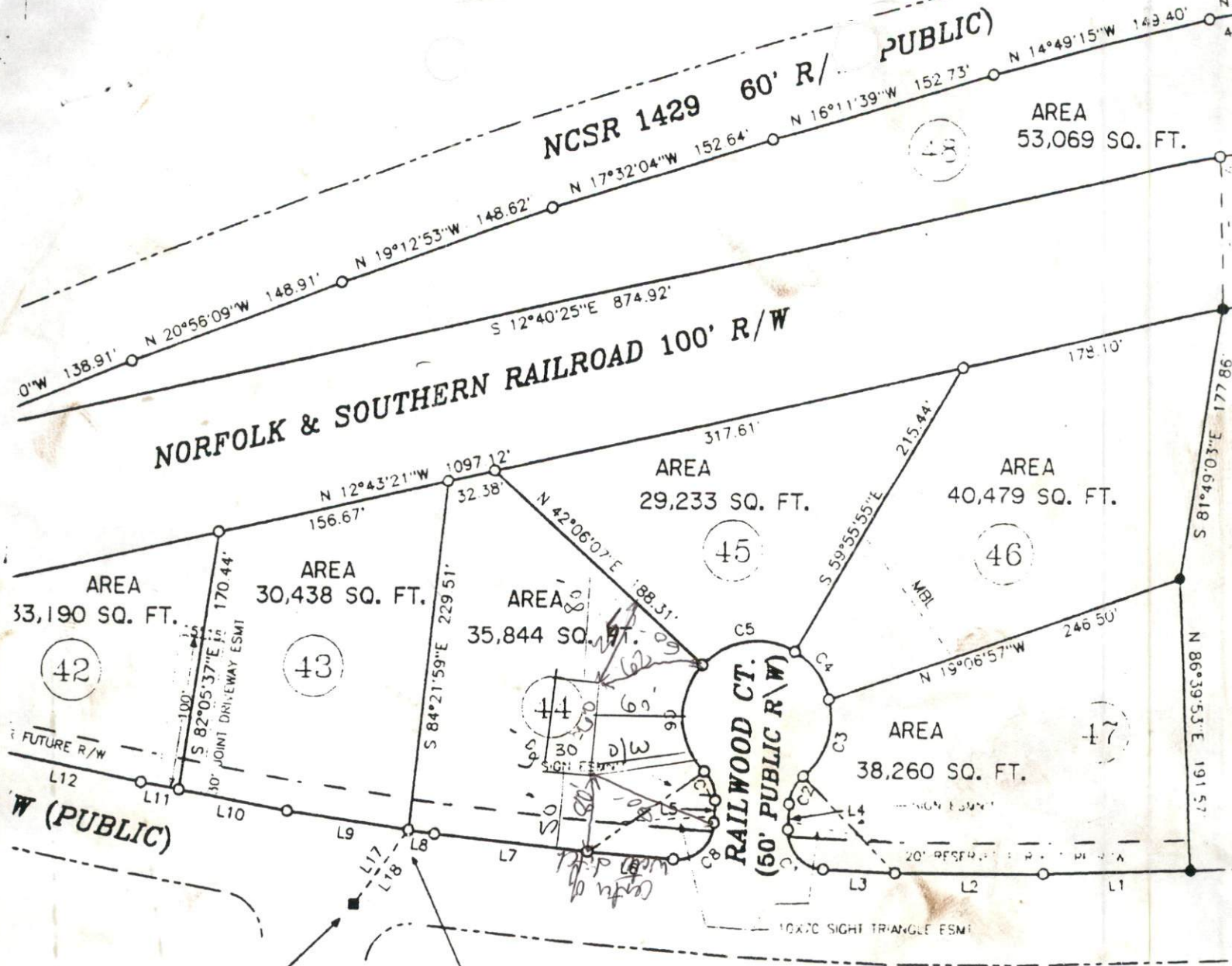
APPLICANT NAME _____

| FACTORS | | PROFILES | | | | | | | | | | | | | |
|---------------------------|-------------|----------|-------|----|----|---|---|---|---|---|----|--|--|--|--|
| | | 1 | 2 | 3 | 4 | 5 | 6 | 7 | 8 | 9 | 10 | | | | |
| LANDSCAPE POSITION | .1940 | SS | | | | | | | | | | | | | |
| SLOPE (%) | .1940 | 3% | | | | | | | | | | | | | |
| HORIZON 1 DEPTH | | 0-24 | 0-30 | — | — | | | | | | | | | | |
| Texture Group | .1941(A)(1) | LS/SL | LS/SL | — | — | | | | | | | | | | |
| Consistence | .1941 | Ufr | Ufr | | | | | | | | | | | | |
| Structure | .1941(A)(2) | Gr | Gr | | | | | | | | | | | | |
| Mineralogy | .1941(A)(3) | MLXP | MLXP | | | | | | | | | | | | |
| HORIZON 2 DEPTH | | 24-42 | 30-42 | — | — | | | | | | | | | | |
| Texture Group | .1941(A)(1) | SCL | SCL | — | — | | | | | | | | | | |
| Consistence | .1941 | Fi | Fi | | | | | | | | | | | | |
| Structure | .1941(A)(2) | SBK | SBK | | | | | | | | | | | | |
| Mineralogy | .1941(A)(3) | SEXP | SEXP | | | | | | | | | | | | |
| HORIZON 3 DEPTH | | | | | | | | | | | | | | | |
| Texture Group | .1941(A)(1) | | | | | | | | | | | | | | |
| Consistence | .1941 | | | | | | | | | | | | | | |
| Structure | .1941(A)(2) | | | | | | | | | | | | | | |
| Mineralogy | .1941(A)(3) | | | | | | | | | | | | | | |
| HORIZON 4 DEPTH | | | | | | | | | | | | | | | |
| Texture Group | .1941(A)(1) | | | | | | | | | | | | | | |
| Consistence | .1941 | | | | | | | | | | | | | | |
| Structure | .1941(A)(2) | | | | | | | | | | | | | | |
| Mineralogy | .1941(A)(3) | | | | | | | | | | | | | | |
| SOIL WETNESS | .1942 | | | | | | | | | | | | | | |
| RESTRICTIVE HORIZON | .1944 | | | | | | | | | | | | | | |
| SAPROLITE | .1943/.1956 | | | | | | | | | | | | | | |
| CLASSIFICATION | .1948 | PS | PS | PS | PS | | | | | | | | | | |
| LONG TERM ACCEPTANCE RATE | .1955 | .4 | .4 | .4 | .4 | | | | | | | | | | |



Layout





N.C. GRID COORDINATES, NAD 83

NCGS "SOY", NAD 83
 N= 636894.42
 E=2055512.29
 CF= 0.999867

N= 636,729.82
 E= 2,055,463.73

| COURSE | BEARING | DISTANCE |
|--------|--------------|----------------|
| L1 | S 01°36'43"E | 99.11' |
| L2 | S 00°09'38"E | 99.08' |
| L3 | S 02°26'40"W | 48.08' |
| L4 | N 87°59'56"W | 16.78' |
| L5 | S 87°59'56"E | 14.59' |
| L6 | S 04°17'47"W | 56.94' |
| L7 | S 06°09'19"W | 102.77' |
| L8 | S 08°20'25"W | 17.86' |
| L9 | S 08°20'25"W | 82.03' |
| L10 | S 10°17'42"W | 73.77' |
| L11 | S 10°17'42"W | 26.12' |
| L12 | S 11°14'54"W | 102.27' |
| L13 | S 11°48'22"W | 107.41' |
| L14 | S 12°00'28"W | 103.47' |
| L15 | S 12°00'58"W | 47.48' |
| L16 | N 87°43'47"E | 100.22' |
| L17 | N 53°54'07"W | 60.09'(GRID) |
| L18 | N 53°54'07"W | 60.10'(HORIZ.) |

SITE PLAN APPROVAL

DISTRICT 3 USE SFD

BEDROOMS 3

[Signature]
 Zoning Administrator

THE SURVEYOR RELIED ON THE APPROVAL OF ALL APPLICANTS AND HAS MADE NO INTERPRETATION.

SUBDIVISION PLAT FOR SOUTH RIDGE

HECTOR'S CREEK TOWNSHIP
 NORTH CAROLINA
 SCALE 1" = 100'