

COMMENTS: _____

LANDSCAPE POSITIONS	GROUP	TEXTURES	.1955 LTAR	CONSISTENCE MOIST	WET
R-RIDGE	I	S-SAND	1.2 - 0.8	VFR-VERY FRIABLE FR-FRIABLE	NS-NON-STICKY SS-SLIGHTLY STICKY
S-SHOULDER SLOPE		LS-LOAMY SAND			
L-LINEAR SLOPE					
FS-FOOT SLOPE	II	SL-SANDY LOAM	0.8 - 0.6	FI-FIRM VFI-VERY FIRM	S-STICKY VS-VERY STICKY
N-NOSE SLOPE		L-LOAM			
H-HEAD SLOPE	III	SI-SILT-	0.6 - 0.3	EFI-EXTREMELY FIRM	NP-NON-PLASTIC SP-SLIGHTLY STICKY P-PLASTIC VP-VERY PLASTIC
CC-CONCLAVE SLOPE		SIL-SILT LOAM			
CV-CONVEX SLOPE		CL-CLAY LOAM			
T-TERRACE		SCL-SANDY CLAY LOAM			
FP-FLOOD PLAN		SICL-SILTY CLAY LOAM			
	IV	SIC-SILTY CLAY	0.4 - 0.1		
		C-CLAY			
		SC-SANDY CLAY			

STRUCTURE

- SG-SINGLE GRAIN
- M-MASSIVE
- CR-CRUMB
- GR-GRANULAR
- SBK-SUBANGULAR BLOCKY
- ABK-ANGULAR BLOCKY
- PL-PLATY
- PR-PRISMATIC

MINERALOGY

- SLIGHTLY EXPANSIVE
- EXPANSIVE

Show profile locations and other site features (dimensions, reference or benchmark, and North).

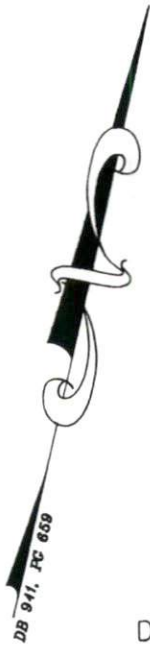
• Site Visit On 5/24/07 By OT & GB

• Failure At Lower End Of Field Effluent Surcasing

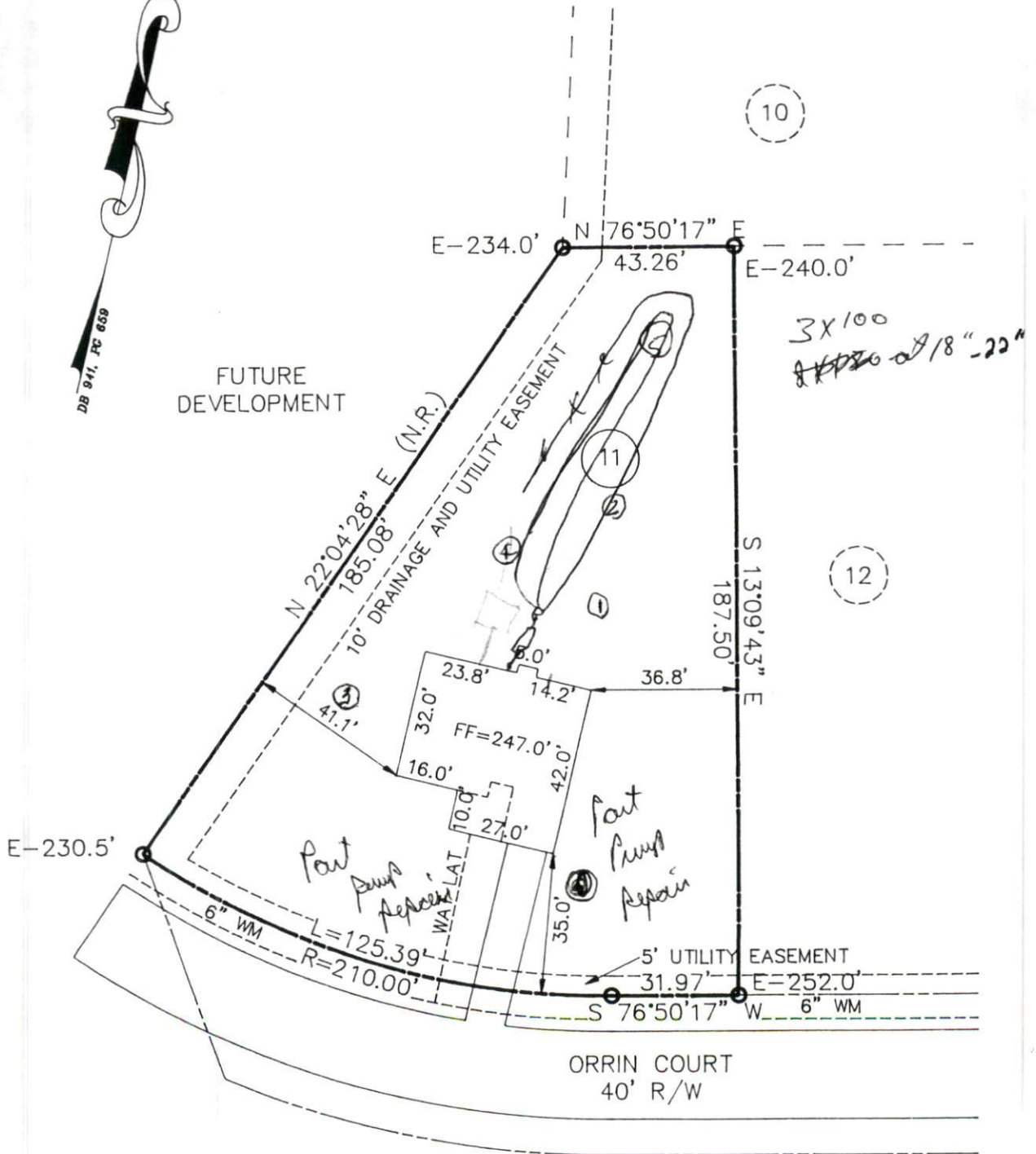
• D-Box Dug Up During Visit

- 2 of 4 Lines Receiving All Effluent
- D-Box Deteriorating Severely
- Speed Dial Adjusted To Have Majority Of Flow Diverted To 2 Non-Failing Lines

• D-Box To Be Replaced; New Cover To Be Placed Over Failing Area



FUTURE DEVELOPMENT



OVERHILLS CREEK
SECTION ONE

