

FACTORS	PROFILE 1	PROFILE 2	PROFILE 3	PROFILE 4	PROFILE 5
LANDSCAPE POSITION	L	L	L	L	L
OPEN (%)	4	4	4	4	4
HORIZON I DEPTH	0-18	0-22	0-19	0-24	0-26
Texture Group	LS	SL	LS	LS/SL	SL
Consistence	h	h	h	h	h
Structure	sl	sl	sl	sl	sl
Mineralogy	ll	ll	ll	ll	ll
HORIZON II DEPTH	18-38	20-40	18-30	24-39	20-40
Texture Group	SL	SL	SL	SL	SL
Consistence	h	h	h	h	h
Structure	sl	sl	sl	sl	sl
Mineralogy	ll	ll	ll	ll	ll
HORIZON III DEPTH			30-41		
Texture Group			SL		
Consistence			h		
Structure			sl		
Mineralogy			ll		
HORIZON IV DEPTH					
Texture Group					
Consistence					
Structure					
Mineralogy					
SOIL WETNESS	32	34	30	30	40
RESTRICTIVE HORIZON	-	-	-	-	-
PROLITE	-	-	-	-	-
CLASSIFICATION	A	A	A	A	S
LONG-TERM ACCEPTANCE RATE	0.4	0.4	0.4	0.4	0.8

FACTORS	PROFILE 1	PROFILE 2	PROFILE 3	PROFILE 4	PROFILE 5
LANDSCAPE POSITION					
OPEN (%)					
HORIZON I DEPTH					
Texture Group					
Consistence					
Structure					
Mineralogy					
HORIZON II DEPTH					
Texture Group					
Consistence					
Structure					
Mineralogy					
HORIZON III DEPTH					
Texture Group					
Consistence					
Structure					
Mineralogy					
HORIZON IV DEPTH					
Texture Group					
Consistence					
Structure					
Mineralogy					
SOIL WETNESS					
RESTRICTIVE HORIZON					
PROLITE					
CLASSIFICATION					
LONG-TERM ACCEPTANCE RATE					

SITE CLASSIFICATION: \_\_\_\_\_ SITE LONG-TERM ACCEPTANCE RATE: \_\_\_\_\_  
 EVALUATED BY: \_\_\_\_\_ OTHER(S) PRESENT: \_\_\_\_\_

REMARKS: \_\_\_\_\_  
 \_\_\_\_\_  
 \_\_\_\_\_  
 \_\_\_\_\_

37/1

# SANITARY SEWAGE SYSTEM

OWNER: Kenneth H. Lugg PHONE: \_\_\_\_\_ DATE REQUESTED: \_\_\_\_\_ DATE EVALUATED: 9-20  
 ADDRESS: \_\_\_\_\_ PROPERTY IDENTIFICATION NO.: \_\_\_\_\_  
 COUNTY: \_\_\_\_\_ PROPERTY SIZE: \_\_\_\_\_ PROPOSED FACILITY: \_\_\_\_\_  
 LOCATION OF SITE: Lot #11 Overhills creek  
 WATER SUPPLY: On-Site Well \_\_\_\_\_ Community \_\_\_\_\_ Public  EVALUATION BY: Auger Boring  Pit \_\_\_\_\_ Cut \_\_\_\_\_

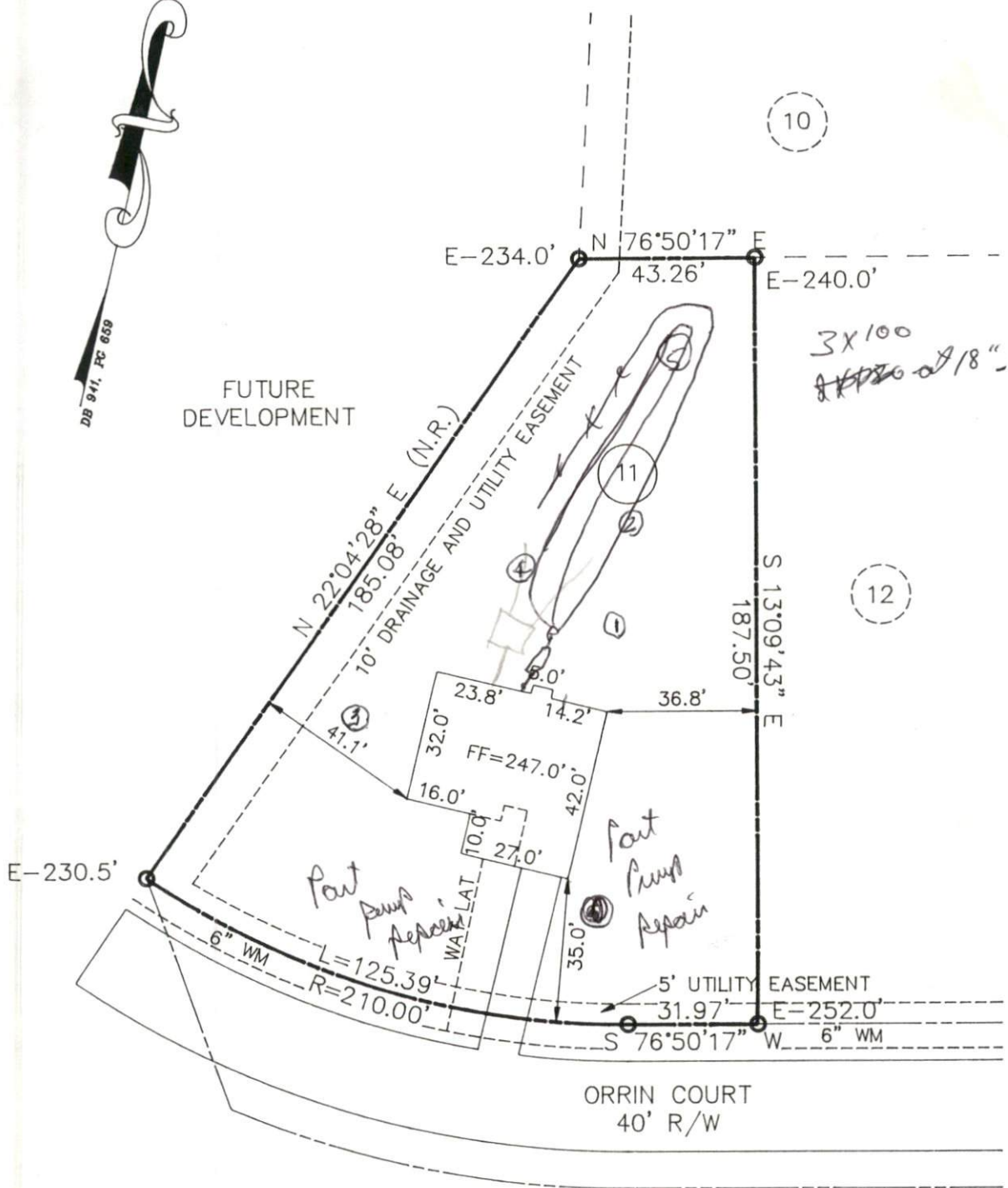
LANDSCAPE POSITION	Group	TEXTURE	Applying Rate	MOIST	CONSISTENCE	WET	STRUCTURE	MINERALOGY
R - Ridge	I	s - sand	1.2-0.8	vfr - very friable	fr - friable	Ns - non-sticky	sg - single grain	1:1, 2:1, mbed
S - Shoulder slope		ls - loamy sand		fr - friable				
L - Linear slope	II	sl - sandy loam	0.8-0.6	fl - firm	vfl - very firm	Ss - slightly sticky	m - massive	cr - crumb
FS - Foot slope		l - loam		fl - firm				
N - Nose slope	III	sil - silt	0.6-0.3	vfl - very firm	epl - extremely firm	S - sticky	sbk - subangular blocky	abk - angular blocky
H - Head slope		sll - silt loam						
Cc - Concave slope		sicl - silty clay loam						
Cv - Convex slope		cl - clay loam						
T - Terrace	IV	scl - sandy clay loam	0.4-0.1			Vs - very sticky	pl - platy	pr - prismatic
FP - Flood Plain		sc - sandy clay						
		sic - silty clay						
		c - clay						

Use the above standard abbreviations.

- NOTES:**
- Horizon Depth - in inches
  - Depth of Fill - in inches from land surface
  - Restrictive Horizon - thickness and inches from land surface
  - Saprolite - S (suitable) or U (unsuitable)

- NOTES:**
- Soil Wetness - inches from land surface to free water or inches from land surface to soil colors with chroma 2 or less - record Munsell color chip designation
  - Classification - S (suitable), PS (provisionally suitable) or U (unsuitable)
  - Long-Term Acceptance Rate - gal/day/ft<sup>2</sup>

DHS 2601 (Revised \_\_\_\_\_)  
 Sanitation Branch (Review \_\_\_\_\_)



OVERHILLS CREEK  
SECTION ONE  
PLAT BOOK F , PAGE 144-D  
KENNETH H. SUGGS



DESIGN FOR PROPOSED  
SEWAGE DISPOSAL SYSTEM