

**COUNTY MAP**

**OWNERSHIP, DEDICATION AND JURISDICTION**  
 I, the undersigned, being that I am (we are) the owner(s) or agent of the land described hereon and that I (we) hereby consent to the subdivision with my (our) free consent, I (we) hereby agree to building setback lines, and dedicate all easements, parks, and other sites and easements to the public as noted, and all of the land shown hereon is subject to the jurisdiction of Harnett County.

19  
 OUT OF 9680-36-5095  
 Tax Parcel ID Number  
 (Owner)

This division of property is exempt from the Harnett County Subdivision Regulations  
*Lou Semarjuku* 10-2-88  
 Planning Director Date

THIS PLAT HAVE BEEN EVALUATED BY A PRIVATE CONSULTANT. ON THIS REVIEW, IT APPEARS THAT LOT(S) ON THIS PLAT COMPLY WITH THE APPROPRIATE REGULATIONS. NOTE THAT FINAL APPROVAL OF THIS PLAT REQUIRES ISSUANCE OF THE APPROPRIATE PERMITS FROM THE HEALTH DEPARTMENT PERMITS FOR SPECIFIC USE AND CONFORMANCE WITH REGULATIONS IN FORCE AT THE TIME OF THIS CERTIFICATION DOES NOT REPRESENT A COMMITMENT FOR ANY SITE WORK.

ENVIRONMENTAL HEALTH

Approval for Recording  
 I certify that the subdivision plat shown hereon has been reviewed and complies with the Subdivision Regulations for Harnett County, North Carolina, and that this plat has been filed in the office of the Register of Deeds of Harnett County.  
 County Planner

LARRY O. THOMAS AND BOBBY B. THOMAS DB 587, P. 157, 157B TRACT A  
 LARRY O. THOMAS AND WIFE, JOYCE B. THOMAS DB 698, P. 928-931 SECOND TRACT

LARRY O. THOMAS AND BOBBY B. THOMAS DB 587, P. 157, 157B TRACT A  
 LARRY O. THOMAS AND WIFE, JOYCE B. THOMAS DB 698, P. 928-931 SECOND TRACT

REMAINING PORTION OF STEPHEN JUNIUS PRINCE AND WIFE, EFFIE PRINCE DB 299, P. 238

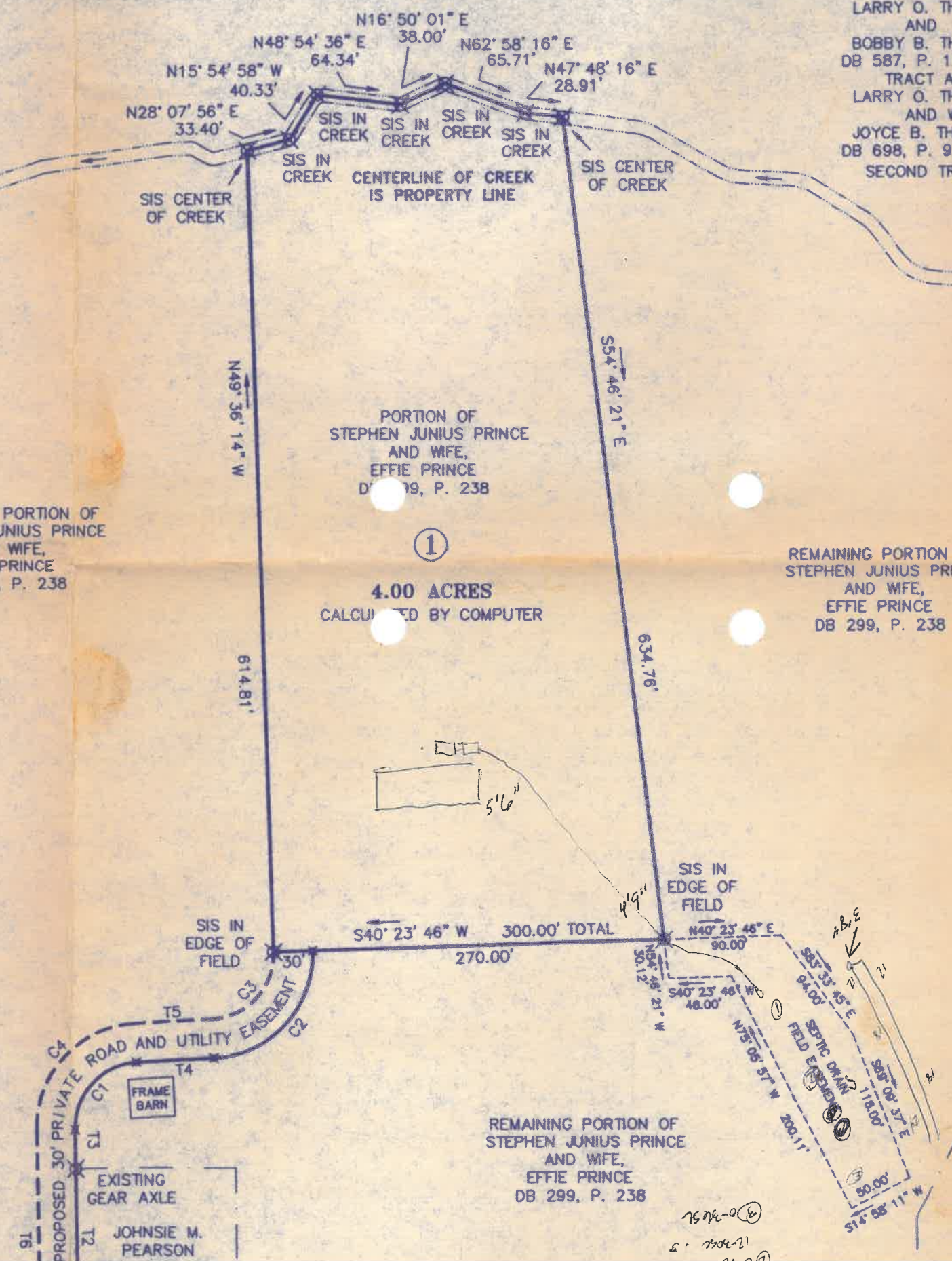
PORTION OF STEPHEN JUNIUS PRINCE AND WIFE, EFFIE PRINCE DB 299, P. 238  
 ①  
 4.00 ACRES CALCULATED BY COMPUTER

REMAINING PORTION OF STEPHEN JUNIUS PRINCE AND WIFE, EFFIE PRINCE DB 299, P. 238

CECIL WOODARD AND WIFE, EFFIE B. WOODARD TRACT 2 DB 670, P. 202-204

CECIL WOODARD AND WIFE, EFFIE B. WOODARD TRACT 1 DB 670, P. 202-204

REMAINING PORTION OF STEPHEN JUNIUS PRINCE AND WIFE, EFFIE PRINCE DB 299, P. 238



LARRY O. THOMAS AND BOBBY B. THOMAS DB 587, P. 157, 157B TRACT A  
 LARRY O. THOMAS AND WIFE, JOYCE B. THOMAS DB 698, P. 928-931 SECOND TRACT