

FACTORS	PROFILE 1	PROFILE 2	PROFILE 3	PROFILE 4	PROFILE 5
LANDSCAPE POSITION	L	L	L	L	L
LOPE (%)	2	2	2	2	2
HORIZON I DEPTH	0-18	0-42	0-24	0-42	0-42
Texture Group	LS	LS	LS	LS	LS
Consistence	MS	MS	MS	MS	MS
Structure	SI	SI	SI	SI	SI
Mineralogy	1:1	1:1	1:1	1:1	1:1
HORIZON II DEPTH	18-24		24-37		
Texture Group	SL		SL		
Consistence	MS		MS		
Structure	SI		SI		
Mineralogy	1:1		1:1		
HORIZON III DEPTH	24-30		30-42		
Texture Group	SCL		LS		
Consistence	MS		MS		
Structure	SI		SI		
Mineralogy	3:1		1:1		
HORIZON IV DEPTH	30-42				
Texture Group	SL				
Consistence	MS				
Structure	SI				
Mineralogy	1:1				
SOIL WETNESS	742	742	742	742	42
RESTRICTIVE HORIZON	=	=	=	=	=
APPROLITE	=	=	=	=	=
CLASSIFICATION	P	S	S	S	S
LONG-TERM ACCEPTANCE RATE	0.6	1.0	0.8	1.0	1.0

FACTORS	PROFILE 1	PROFILE 2	PROFILE 3	PROFILE 4	PROFILE 5
LANDSCAPE POSITION					
LOPE (%)					
HORIZON I DEPTH					
Texture Group					
Consistence					
Structure					
Mineralogy					
HORIZON II DEPTH					
Texture Group					
Consistence					
Structure					
Mineralogy					
HORIZON III DEPTH					
Texture Group					
Consistence					
Structure					
Mineralogy					
HORIZON IV DEPTH					
Texture Group					
Consistence					
Structure					
Mineralogy					
SOIL WETNESS					
RESTRICTIVE HORIZON					
APPROLITE					
CLASSIFICATION					
LONG-TERM ACCEPTANCE RATE					

SITE CLASSIFICATION: _____ SITE LONG-TERM ACCEPTANCE RATE: _____
 EVALUATED BY: _____ OTHER(S) PRESENT: _____
 REMARKS: _____

SANITARY SEWAGE SYSTEM

OWNER: H & H Const PHONE: _____ DATE REQUESTED: _____ DATE EVALUATED: 8-26-93
 ADDRESS: _____ PROPERTY IDENTIFICATION NO.: _____
 COUNTY: _____ PROPERTY SIZE: _____ PROPOSED FACILITY: _____
 LOCATION OF SITE: Lot # 12 Fredricks
 WATER SUPPLY: On-Site Well _____ Community _____ Public EVALUATION BY: Auger Boring Pr _____ Cut _____

LANDSCAPE POSITION	Group	TEXTURE	Applying Rate	MOIST	LEGEND	STRUCTURE	MINERALOGY
				CONSISTENCE			
R - Ridge	I	s - sand	1.2-0.8	vfr - very friable	WET	sg - single grain	MINERALOGY 1:1, 2:1, mixed
S - Shoulder slope		ls - loamy sand		fr - friable		Ns - non-sticky	
L - Linear slope	II	sl - sandy loam	0.8-0.6	fl - firm	WET	cr - crumb	MINERALOGY 1:1, 2:1, mixed
FS - Foot slope		l - loam		vfl - very firm		Ss - slightly sticky	
N - Nose slope	III	sl - silt	0.6-0.3	efl - extremely firm	WET	sbk - subangular blocky	MINERALOGY 1:1, 2:1, mixed
H - Head slope		sll - silt loam		Ns - non-sticky		S - sticky	
Cc - Concave slope	IV	sicl - silty clay loam	0.4-0.1		WET	pl - platy	MINERALOGY 1:1, 2:1, mixed
Cv - Convex slope		cl - clay loam		Np - non-plastic		Vs - very sticky	
T - Terrace		scl - sandy clay loam					
FP - Flood Plain		sc - sandy clay					
		sic - silty clay					
		c - clay					

Use the above standard abbreviations.

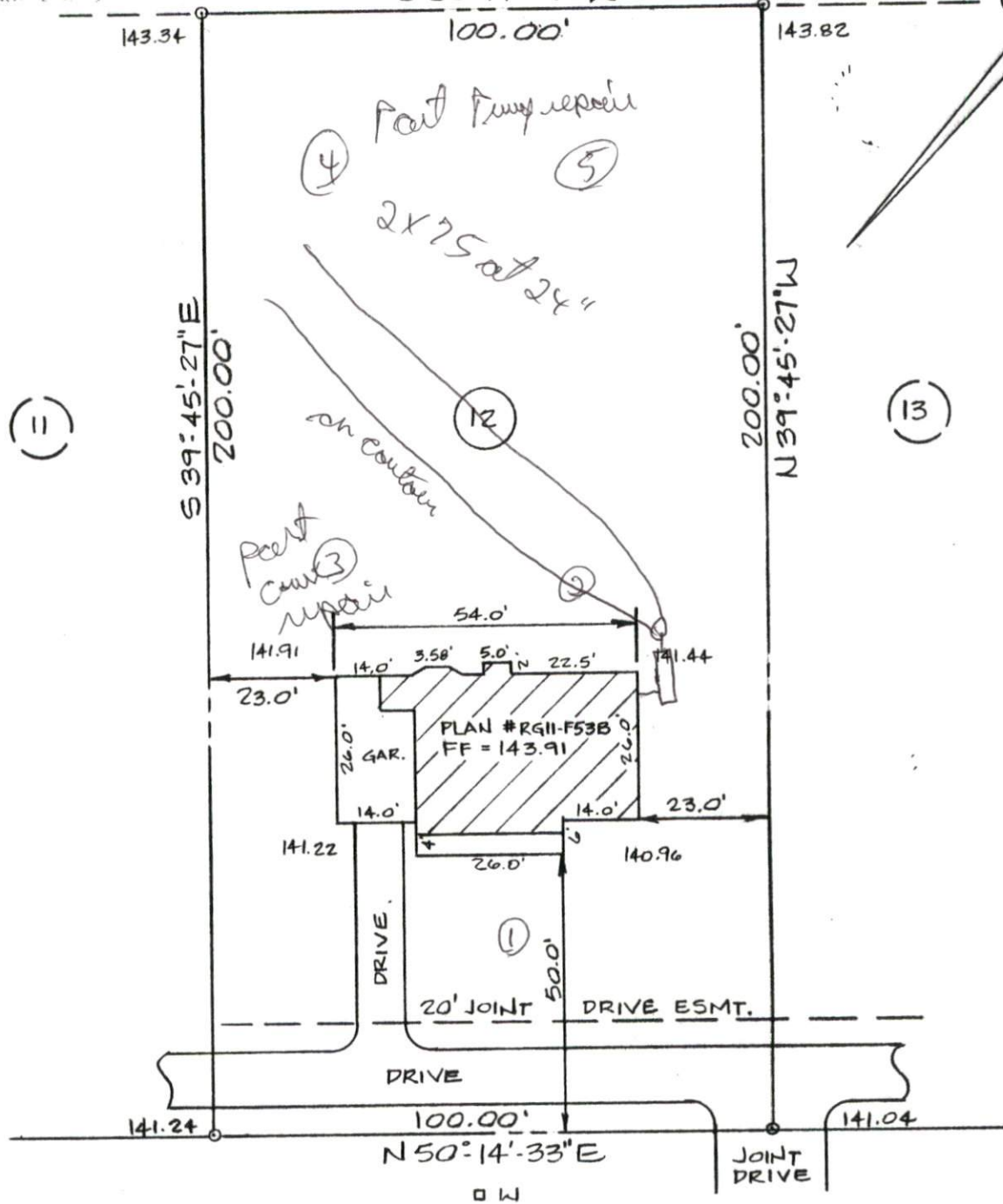
- NOTES:**
- Horizon Depth - in inches
 - Depth of Fill - in inches from land surface
 - Restrictive Horizon - thickness and inches from land surface
 - Saprolite - S (suitable) or U (unsuitable)

- NOTES:**
- Soil Wetness - inches from land surface to free water or inches from land surface to soil colors with chroma 2 or less - record Munsell color chip designation
 - Classification - S (suitable), PS (provisionally suitable) or U (unsuitable)
 - Long-Term Acceptance Rate - gal/day/ft²

DHS 2601 (Revised _____)
 Sanitation Branch (Review _____)

Not Prepared in Accordance
with G-S-47-30

Not For Recordation
S 50°-14'-33" W



141.98 ELLIOTT BRIDGE ROAD 142.22
70' R/W

**PLOT PLAN
FOR**

H & H Construction

ADDRESS
TOWNSHIP OF

Elliott Bridge Road
Anderson Creek