

LEGEND

LANDSCAPE POSITION - 1940

- R - Ridge
- S - Shoulder Slope
- L - Linear Slope
- FS - Foot Slope
- N - Nose Slope
- H - Head Slope
- Cc - Concave Slope
- Cv - Convex Slope
- T - Terrace
- FP - Flood Plain
- A - Altered
- DW - Drainage Way
- DS - Debris Slump*

GROUP	TEXTURE	LTAR
I	s - sand	1.2 - 0.8
	ls - loamy sand	
II	sl - sandy loam	0.8 - 0.6
	l - loam	
III	si - silt	0.6 - 0.3
	sil - silt loam	
	sicl - silty clay loam	
	cl - clay loam	
	scl - sandy clay loam	
IV	sc - sandy clay	0.4 - 0.1
	sic - silty clay	
	c - clay	

CONSISTENCE

MOIST	WET
vfr - very friable	Ws - Non-sticky
fr - friable	Ss - Slightly sticky
fi - firm	S - Sticky
vfi - very firm	Vs - Very sticky
efi - extremely firm	Np - Non-plastic
	Sp - Slightly plastic
	P - Plastic
	Vp - Very plastic

STRUCTURE - 1942(A)(2)

- sg - single grain
- m - massive
- cr - crumb
- gr - granular
- sbk - subangular blocky
- abk - angular blocky
- pl - platy
- pr - prismatic

MINERALOGY - 1941(A)(3)

5 Exp 1:1 Slightly Expansive
Exp 2:1 mixed Expansive

SAPROLITE

- S - Suitable
- U - Unsuited

CLASSIFICATION

- S - Suitable
- PS - Provisionally suitable
- U - Unsuited

NOTES:

HORIZON DEPTH - in inches

DEPTH OF FILL - in inches from land surface

RESTRICTIVE HORIZON - thickness and inches from land surface

SOIL WETNESS - 1942 - in inches from land surface to free water, or

in inches from land surface to soil colors with chroma 2 or less - record Munsell color chip designation

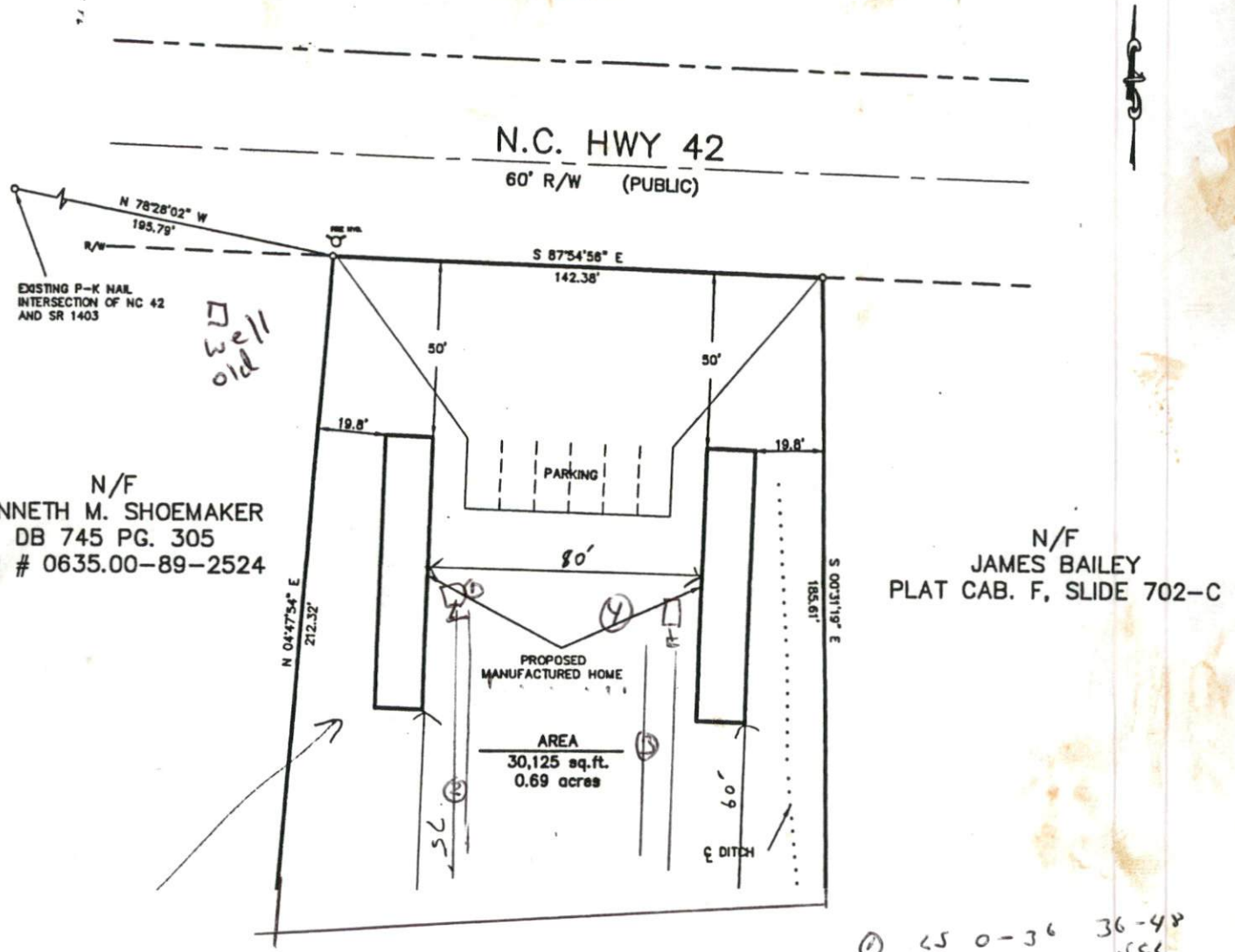
LONG TERM ACCEPTANCE RATE - in gal./day/sq.ft.

PAUL O'DELL

LOT 1, PLAT CAB. F, SLIDE 702-C

BUCKHORN TOWNSHIP HARNETT COUNTY NORTH CAROLINA

SCALE: 1" = 50'



EXISTING P-K NAIL INTERSECTION OF NC 42 AND SR 1403

old well

N/F
KENNETH M. SHOEMAKER
DB 745 PG. 305
PIN # 0635.00-89-2524

N/F
JAMES BAILEY
PLAT CAB. F, SLIDE 702-C

PROPOSED MANUFACTURED HOME
AREA
30,125 sq. ft.
0.69 acres

*36" deep
2 at 25'*

- ① 25 0-36 36-48
 .6 56
- ② 25 0-36 36-48
 .8
- ③ 25 0-40 36-48
 .9
- ④ 0-40 25 36-48
 .8

H