

SANITARY SEWAGE SYSTEM

OWNER: Homb Investments Inc PHONE: 449-5412 DATE REQUESTED: 1-17-94 DATE EVALUATED: 2/19/94
 ADDRESS: Rt 2 Box 272-B Campbell PROPERTY IDENTIFICATION NO.: _____
 COUNTY: Hannett PROPERTY SIZE: _____ PROPOSED FACILITY: 3 BODIEDS
 LOCATION OF SITE: Mingo Branch Estab Lot 152
 WATER SUPPLY: On-Site Well _____ Community _____ Public X EVALUATION BY: Auger Boring gld PR _____ Cut _____

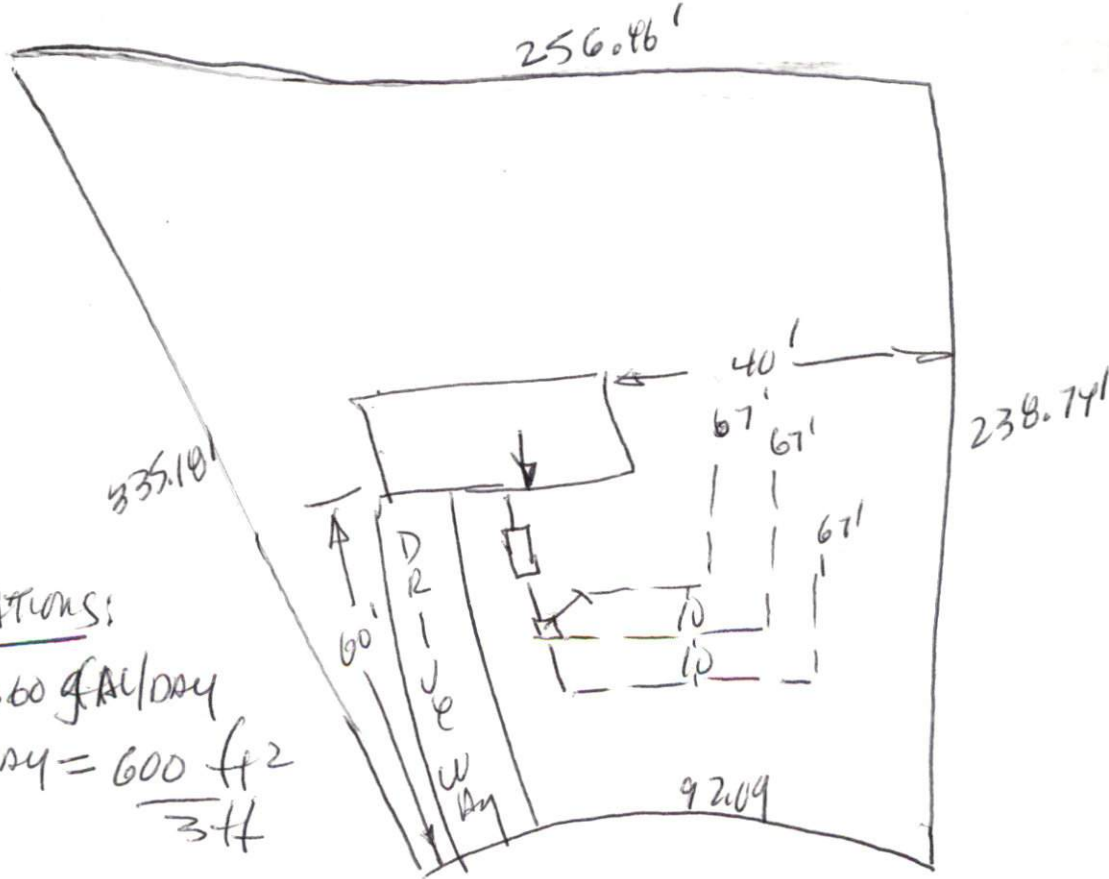
| LANDSCAPE POSITION | Group | TEXTURE | Applying Rate | MOIST | CONSISTENCE | WET | STRUCTURE | MINERALS |
|--------------------|-------|-----------------------|---------------|--------------------|----------------------|-----------------------|-------------------------|----------|
| R - Ridge | I | s - sand | 1.2-0.8 | vfr - very friable | fr - friable | Ns - non-sticky | sg - single grain | 1:1, 2:1 |
| S - Shoulder slope | | ls - loamy sand | | fr - friable | | Ns - non-sticky | m - massive | |
| L - Linear slope | II | sl - sandy loam | 0.8-0.6 | f - firm | vfi - very firm | Ss - slightly sticky | cr - crumb | |
| FS - Foot slope | | l - loam | | f - firm | | S - sticky | gr - granular | |
| N - Nose slope | III | sl - silt | 0.6-0.3 | vfi - very firm | efi - extremely firm | Vs - very sticky | sbk - subangular blocky | |
| H - Head slope | | sil - silt loam | | | | Np - non-plastic | abk - angular blocky | |
| Cc - Concave slope | | scl - silty clay loam | | | | Sp - slightly plastic | pl - platy | |
| Cv - Convex slope | | cl - clay loam | | | | P - plastic | pr - prismatic | |
| T - Terrace | IV | scl - sandy clay loam | 0.4-0.1 | | | Vp - very plastic | | |
| FP - Flood Plain | | sc - sandy clay | | | | | | |
| | | c - clay | | | | | | |

Use the above standard abbreviations.

- NOTES:**
- Horizon Depth - in inches
 - Depth of Fill - in inches from land surface
 - Restrictive Horizon - thickness and inches from land surface
 - Saprotite - S (suitable) or U (unsuitable)

- NOTES:**
- Soil Wetness - inches from land surface to free water or inches from land surface to soil colors with chroma 2 or less - record Munsell color chip designation
 - Classification - S (suitable), PS (provisionally suitable) or U (unsuitable)
 - Long-Term Acceptance Rate - gal/day/ft²

DHS 2501 (Revised _____)
 Sanitation Branch (Review _____)



CALCULATIONS:
 $3(120) = 360 \text{ gal/day}$
 $\frac{360 \text{ gal/day}}{.6} = 600 \text{ ft}^2$
 $\frac{600}{3.4} = 176.47$
2004 3 LINES 67' + 10' each

| FACTORS | PROFILE 1 | PROFILE 2 | PROFILE 3 | PROFILE 4 | PROFILE 5 |
|-----------------|-----------|-----------|-----------|-----------|-----------|
| ESCAPE POSITION | R | R | L | | |
| PE (%) | 40% | 50% | | | |
| IZON I DEPTH | 0" - 2" | 0" - 2" | 0" - 3" | | |
| ure Group | TOP SOIL | TOP SOIL | TOP SOIL | | |
| istance | | | | | |
| cture | | | | | |
| eralogy | | | | | |
| IZON II DEPTH | 2" - | 2" - 24" | 3" - | | |
| ure Group | LS | LS | LS | | |
| istance | EV | EV | EV | | |
| cture | EV | EV | EV | | |
| eralogy | 1/1 | 1/1 | 1/1 | | |
| IZON III DEPTH | | 24" - 48" | | | |
| ure Group | | SCL | | | |
| istance | | EI | | | |
| cture | | Sbk | | | |
| eralogy | | 1/1 | | | |
| IZON IV DEPTH | | | | | |
| ure Group | | | | | |
| istance | | | | | |
| cture | | | | | |
| eralogy | | | | | |
| WETNESS | 30' 547/1 | | 30' 547/1 | | |
| RICTIVE HORIZON | | | | | |
| OLITE | | | | | |
| SIFICATION | S | S | PS | | |
| TERM | | | | | |
| PTANCE RATE | .09 | .06 | .08 | | |

| FACTORS | PROFILE 1 | PROFILE 2 | PROFILE 3 | PROFILE 4 | PROFILE 5 |
|-----------------|-----------|-----------|-----------|-----------|-----------|
| ESCAPE POSITION | | | | | |
| PE (%) | | | | | |
| IZON I DEPTH | | | | | |
| ure Group | | | | | |
| istance | | | | | |
| cture | | | | | |
| eralogy | | | | | |
| IZON II DEPTH | | | | | |
| ure Group | | | | | |
| istance | | | | | |
| cture | | | | | |
| eralogy | | | | | |
| IZON III DEPTH | | | | | |
| ure Group | | | | | |
| istance | | | | | |
| cture | | | | | |
| eralogy | | | | | |
| IZON IV DEPTH | | | | | |
| ure Group | | | | | |
| istance | | | | | |
| cture | | | | | |
| eralogy | | | | | |
| WETNESS | | | | | |
| RICTIVE HORIZON | | | | | |
| OLITE | | | | | |
| SIFICATION | | | | | |
| TERM | | | | | |
| PTANCE RATE | | | | | |

CLASSIFICATION:

PS/LS
Subsistence
 1) HIGH FOUNDATIONS
 2) RELOCATED DRIVEWAY
 RELOCATED HOUSE 60' FROM FRONT, 40' FROM EIGHT
 (SYSTEM FRONT)

SITE LONG-TERM ACCEPTANCE RATE: .06
 OTHER(S) PRESENT:

ATED BY:
 DATE: