

# SANITARY SEWAGE SYSTEM

OWNER: Home Investments PHONE: \_\_\_\_\_ DATE REQUESTED: \_\_\_\_\_ DATE EVALUATED: \_\_\_\_\_  
 ADDRESS: Nice Branch lot 28 PROPERTY IDENTIFICATION NO.: \_\_\_\_\_  
 COUNTY: \_\_\_\_\_ PROPERTY SIZE: \_\_\_\_\_ PROPOSED FACILITY: \_\_\_\_\_  
 LOCATION OF SITE: \_\_\_\_\_  
 WATER SUPPLY: On-Site Well \_\_\_\_\_ Community \_\_\_\_\_ Public \_\_\_\_\_ EVALUATION BY: Auger Boring \_\_\_\_\_ Pit \_\_\_\_\_ Cut \_\_\_\_\_

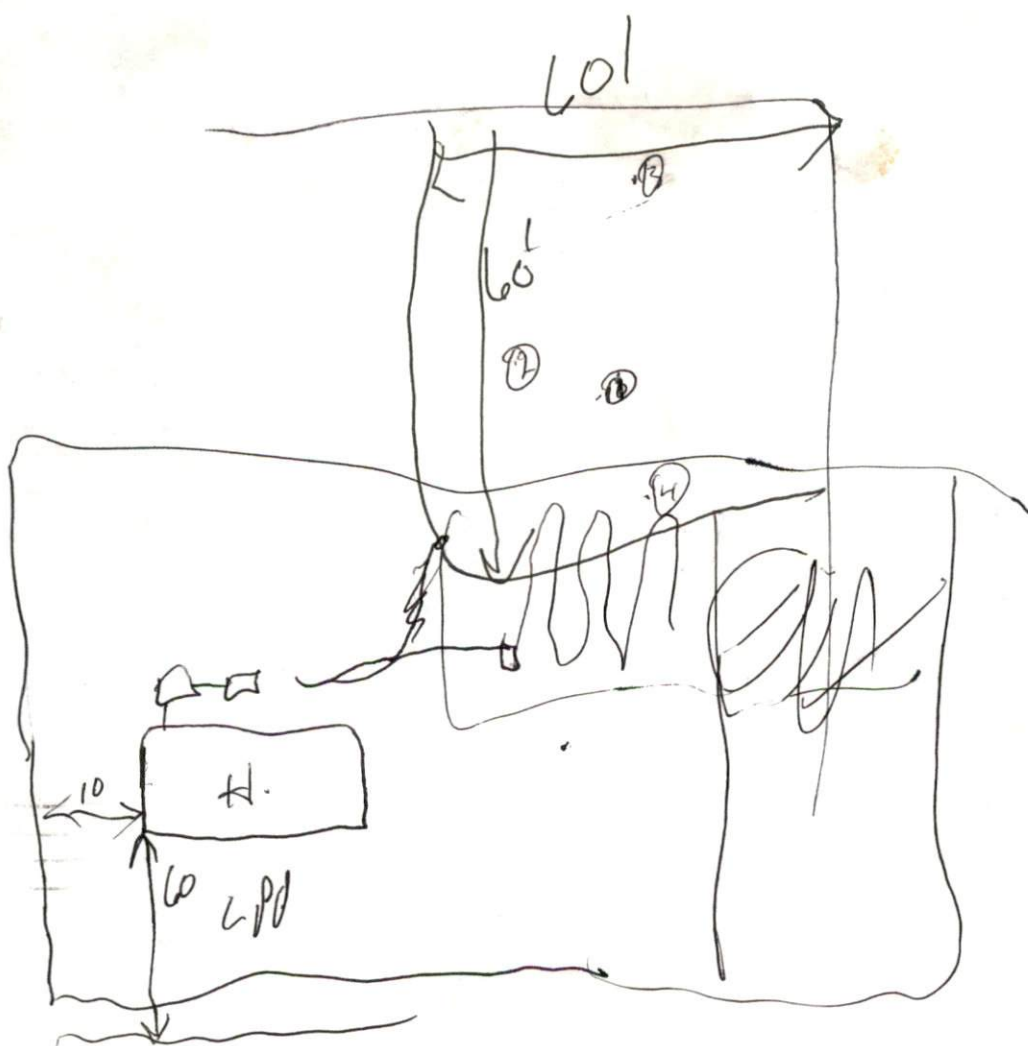
LANDSCAPE POSITION	Group	TEXTURE	Applying Rate	MOIST	LEGEND	STRUCTURE	MINERALOGY
R - Ridge	I	s - sand	1.2-0.8	vfr - very friable	WET	sg - single grain	1:1, 2:1, mb
S - Shoulder slope		ls - loamy sand		fr - friable		Ns - non-sticky	
L - Linear slope		sl - sandy loam		f - firm		Ss - slightly sticky	
FS - Foot slope	II	l - loam	0.8-0.6	vfl - very firm	S - sticky	gr - granular	
N - Nose slope		sl - silt		efl - extremely firm	Vs - very sticky	sbk - subangular blocky	
H - Head slope	III	sl - silt loam	0.6-0.3			abk - angular blocky	
Cc - Concave slope		sicl - silty clay loam			Np - non-plastic	pl - platy	
Cv - Convex slope		cl - clay loam			Sp - slightly plastic	P - plastic	
T - Terrace		sci - sandy clay loam			Vp - very plastic	pr - prismatic	
FP - Flood Plain	IV	sc - sandy clay	0.4-0.1				
		sic - silty clay					
		c - clay					

Use the above standard abbreviations.

- NOTES:**
- Horizon Depth - in inches
  - Depth of Fill - in inches from land surface
  - Restrictive Horizon - thickness and inches from land surface
  - Saprolite - S (suitable) or U (unsuitable)

- NOTES:**
- Soil Wetness - inches from land surface to free water or inches from land surface to soil colors with chroma 2 or less - record Munsell color chip designation
  - Classification - S (suitable), PS (provisionally suitable) or U (unsuitable)
  - Long-Term Acceptance Rate - gal/day/ft<sup>2</sup>

DHS 2601 (Revised \_\_\_\_\_)  
 Sanitation Branch (Review \_\_\_\_\_)



FACTORS	PROFILE 1	PROFILE 2	PROFILE 3	PROFILE 4	PROFILE 5
LANDSCAPE POSITION					
OPEN (%)					
HORIZON I DEPTH	0-16	0-22	0-16	0-10	0-24
Texture Group	LS	LS	LS	LS	LS
Consistence	Fr	Fr	Fr	Fr	Fr
Structure	Ca	Sq	Sq	Sq	Sq
Mineralogy					
HORIZON II DEPTH	16-40	22-38	16-48	10-32	24-40
Texture Group	SL	SL	SL	SL	SL
Consistence	Fr	Kr	Fr	Fr	Fr
Structure	gr	gr	gr	gr	gr
Mineralogy					
HORIZON III DEPTH	40-48	38-48	<del>40-48</del>	32-	40-48
Texture Group	SC	SCL		SP	SC
Consistence	Fi	Fr		Fi	
Structure	Sbk	Sbk		Sbk	
Mineralogy					
HORIZON IV DEPTH					
Texture Group					
Consistence					
Structure					
Mineralogy					
WETNESS					
RESTRICTIVE HORIZON					
PROLITE					
CLASSIFICATION					
LONG-TERM ACCEPTANCE RATE					

FACTORS	PROFILE 1	PROFILE 2	PROFILE 3	PROFILE 4	PROFILE 5
LANDSCAPE POSITION					
OPEN (%)					
HORIZON I DEPTH					
Texture Group					
Consistence					
Structure					
Mineralogy					
HORIZON II DEPTH					
Texture Group					
Consistence					
Structure					
Mineralogy					
HORIZON III DEPTH					
Texture Group					
Consistence					
Structure					
Mineralogy					
HORIZON IV DEPTH					
Texture Group					
Consistence					
Structure					
Mineralogy					
WETNESS					
RESTRICTIVE HORIZON					
PROLITE					
CLASSIFICATION					
LONG-TERM ACCEPTANCE RATE					

SITE CLASSIFICATION: \_\_\_\_\_ SITE LONG-TERM ACCEPTANCE RATE: \_\_\_\_\_  
 EVALUATED BY: \_\_\_\_\_ OTHER(S) PRESENT: \_\_\_\_\_  
 REMARKS: \_\_\_\_\_  
 \_\_\_\_\_  
 \_\_\_\_\_  
 \_\_\_\_\_

# SANITARY SEWAGE SYSTEM

OWNER: Home Investments PHONE: \_\_\_\_\_ DATE REQUESTED: \_\_\_\_\_ DATE EVALUATED: \_\_\_\_\_  
 ADDRESS: Miss Branch lot 20 PROPERTY IDENTIFICATION NO.: \_\_\_\_\_  
 COUNTY: \_\_\_\_\_ PROPERTY SIZE: \_\_\_\_\_ PROPOSED FACILITY: \_\_\_\_\_  
 LOCATION OF SITE: \_\_\_\_\_  
 WATER SUPPLY: On-Site Well \_\_\_\_\_ Community \_\_\_\_\_ Public \_\_\_\_\_ EVALUATION BY: Auger Boring \_\_\_\_\_ Pit \_\_\_\_\_ Cut \_\_\_\_\_

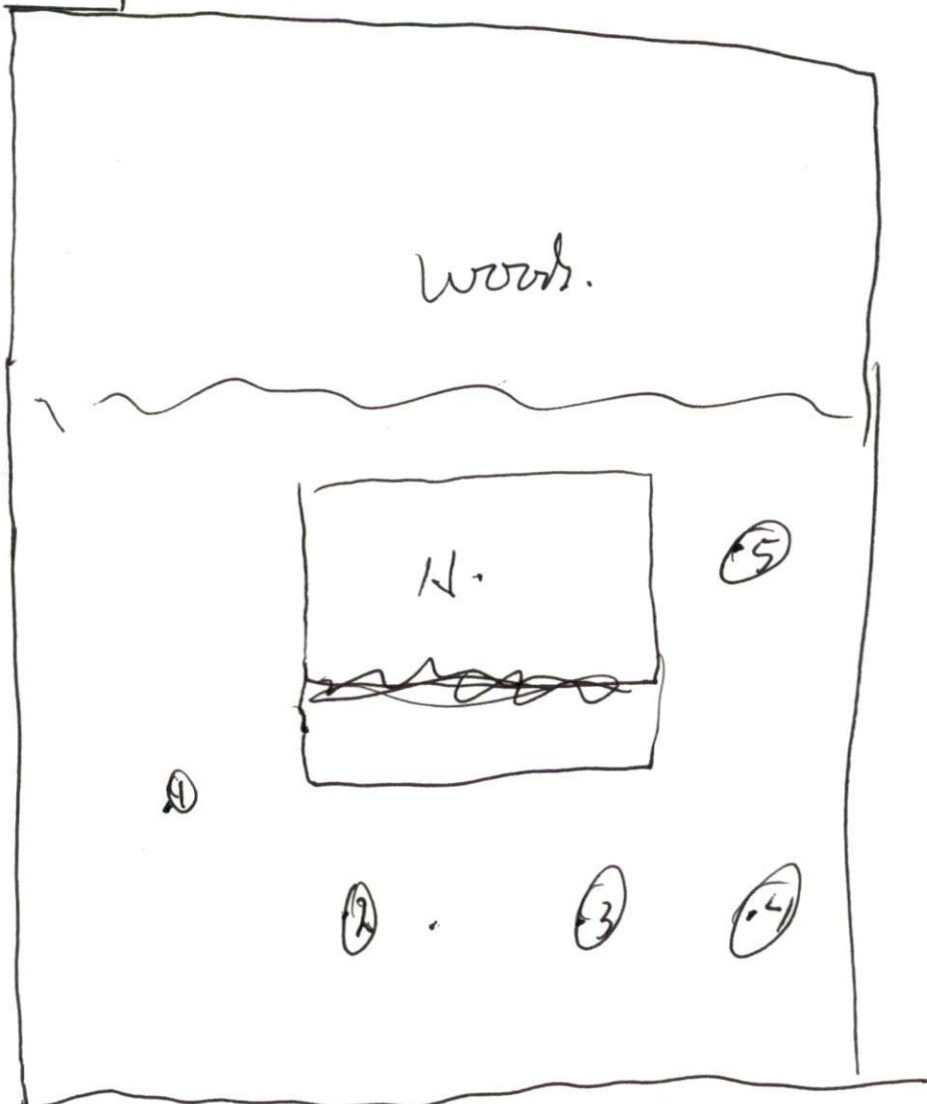
LANDSCAPE POSITION	Group	TEXTURE	Appl. Rate	MOIST	LEGEND	STRUCTURE	MINERALO
R - Ridge	I	s - sand	1.2-0.8	vfr - very friable	CONSISTENCE	sg - single grain	1:1, 2:1, m
S - Shoulder slope		ls - loamy sand					
L - Linear slope	II	sl - sandy loam	0.8-0.6	fr - friable	WET	ns - non-sticky	
FS - Foot slope		l - loam		fl - firm		ss - slightly sticky	
N - Nose slope	III	sil - silt	0.6-0.3	ff - very firm	s - sticky	gr - granular	
H - Head slope		sll - silt loam		vf - extremely firm	vs - very sticky	sbk - subangular blocky	
Cc - Concave slope		sicl - silty clay loam			Np - non-plastic	abk - angular blocky	
Cv - Convex slope		cl - clay loam			Sp - slightly plastic	pl - platy	
T - Terrace	IV	scl - sandy clay loam	0.4-0.1		P - plastic	pr - prismatic	
FP - Flood Plain		sc - sandy clay			Vp - very plastic		
		sic - silty clay					
		c - clay					

Use the above standard abbreviations.

- NOTES:**
- Horizon Depth - in inches
  - Depth of Fill - in inches from land surface
  - Restrictive Horizon - thickness and inches from land surface
  - Saprolite - S (suitable) or U (unsuitable)

- NOTES:**
- Soil Wetness - inches from land surface to free water or inches from land surface to soil colors with chroma 2 or less - record Munsell color chip designation
  - Classification - S (suitable), PS (provisionally suitable) or U (unsuitable)
  - Long-Term Acceptance Rate - gal/day/ft<sup>2</sup>

DHS 2501 (Revised \_\_\_\_\_)  
 Sanitation Branch (Review \_\_\_\_\_)



FACTORS	PROFILE 1	PROFILE 2	PROFILE 3	PROFILE 4	PROFILE 5
LANDSCAPE POSITION					
OPEN (%)					
HORIZON I DEPTH	0-18	0-20	0-22	0-14	0-18
Structure Group	LS	LS	LS	LS	SL
Resistance	Fr	Fr	Fr	Fr	Fr
Structure	79	69	59	59	
Mineralogy					
HORIZON II DEPTH	18-36	20-28	22-36	14-26	18-30
Structure Group	SL	SL	SL	SL	2C
Resistance	Fr	Fr	Fr	Fr	Fr
Structure	3V	4F	4V	4V	5B4
Mineralogy					
HORIZON III DEPTH	<del>36</del> 36-42	28-34	36-42	26-48	
Structure Group	SC	SC	LS	SC	
Resistance	Fr	Fr			
Structure	5B4	5B4			
Mineralogy					
HORIZON IV DEPTH		34-48	44-49		
Structure Group		SL	SC		
Resistance			Fr		
Structure			5B4		
Mineralogy					
REL WETNESS	42				30
RESTRICTIVE HORIZON					
PROLITE					
CLASSIFICATION					
LONG-TERM ACCEPTANCE RATE					

FACTORS	PROFILE 1	PROFILE 2	PROFILE 3	PROFILE 4	PROFILE 5
LANDSCAPE POSITION					
OPEN (%)					
HORIZON I DEPTH					
Structure Group					
Resistance					
Structure					
Mineralogy					
HORIZON II DEPTH					
Structure Group					
Resistance					
Structure					
Mineralogy					
HORIZON III DEPTH					
Structure Group					
Resistance					
Structure					
Mineralogy					
HORIZON IV DEPTH					
Structure Group					
Resistance					
Structure					
Mineralogy					
REL WETNESS					
RESTRICTIVE HORIZON					
PROLITE					
CLASSIFICATION					
LONG-TERM ACCEPTANCE RATE					

E CLASSIFICATION: \_\_\_\_\_  
 EVALUATED BY: \_\_\_\_\_  
 MARKS: \_\_\_\_\_  
 SITE LONG-TERM ACCEPTANCE RATE: \_\_\_\_\_  
 OTHER(S) PRESENT: \_\_\_\_\_

# SANITARY SEWAGE SYSTEM

OWNER: Home Investments Inc PHONE: 409-5412 DATE REQUESTED: 1-19-90 DATE EVALUATED: 2-24-90  
 ADDRESS: PT 2 BAY 272-B (Cumbernauld)  
 COUNTY: HAMBURST  
 LOCATION OF SITE: MILES BROADWAY ESTABLISHMENT LOT 28  
 WATER SUPPLY: On-Site Well \_\_\_\_\_ Community \_\_\_\_\_ Public X  
 EVALUATION BY: Auger Boring per PR \_\_\_\_\_ CUT \_\_\_\_\_

**LEGEND**

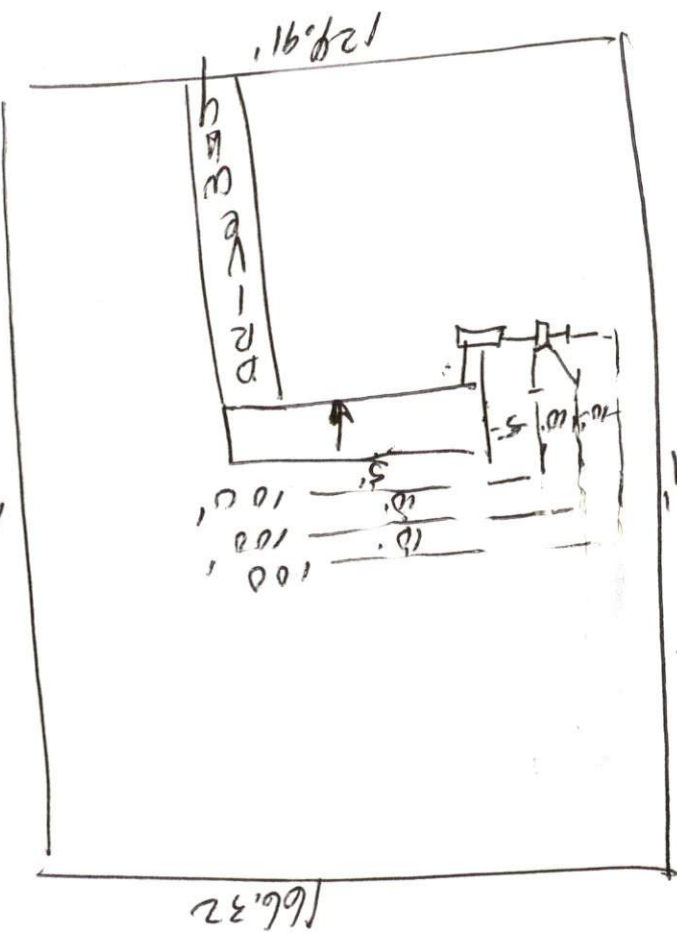
STRUCTURE		WET	
sg	single grain	Ns	non-sticky
m	massive	Ns	slightly sticky
cr	crumbs	S	sticky
gr	granular	Vs	very sticky
abk	angular blocky	Np	non-plastic
abk	subangular blocky	Sp	slightly plastic
pl	platy	P	plastic
pr	prismatic	Vp	very plastic

**LANDSCAPE POSITION**

Group	Texture	Moist
I	s - sand ls - loamy sand sl - sandy loam	1.2-0.8
II	l - loam sl - silt sl - silt loam	0.8-0.6
III	sl - silty loam scl - silty clay loam cl - clay loam	0.6-0.3
IV	sc - sandy clay scl - sandy clay loam cl - clay c - clay	0.4-0.1

**NOTES:**  
 Use the above standard abbreviations.  
 Horizon Depth - in inches  
 Depth of Fill - in inches from land surface  
 Restrictive Horizon - thickness and inches from land surface  
 Saprolite - S (suitable) or U (unsuitable)  
 DHS 2501 (Revised)  
 Sanction Branch (Revised)

**NOTES:**  
 Soil Wetness - inches from land surface to free water or inches from land surface to soil colors  
 Chroma 2 or less - record Munsell color chip designation  
 Classification - S (suitable), PS (provisionally suitable) or U (unsuitable)  
 Long-term Acceptance Rate - galdaym?



**Calculations**  
 $360 \text{ gal/day} = 120 \text{ ft}^3$   
 $360 \text{ gal/day} = 90 \text{ ft}^3$   
 $300 \text{ ft} = 300 \text{ ft}$   
 300 ft  
 300 ft

FACTORS	PROFILE 1	PROFILE 2	PROFILE 3	PROFILE 4	PROFILE 5
ESCAPE POSITION	R	R	L		
PE (%)	20%	20%			
HORIZON I DEPTH	0" - 5"	0" - 3"	0" - 2"		
Soil Group	TAP 2016	TAP 311	TAP 6011		
Resistance					
Structure					
Mineralogy					
HORIZON II DEPTH	5" - 18"	3" - 20"	2" - 8"		
Soil Group	LS	LS	LS		
Resistance	EV	EV	EV		
Structure	GY	GY	GY		
Mineralogy	1:1	1:1	1:1		
HORIZON III DEPTH	18" - 30"	20" - 48"	18" - 48"		
Soil Group	SCL	SC	SC		
Resistance	FI	VFI	VFI		
Structure	2pk	abk	abk		
Mineralogy	1:1	1:1	1:1		
HORIZON IV DEPTH	30" - 48"				
Soil Group	SC				
Resistance	VFI				
Structure	abk				
Mineralogy	1:1				
WETNESS					
PERMEABLE HORIZON					
ROLITE					
CLASSIFICATION	PS	PS	PS		
LONG-TERM ACCEPTANCE RATE	.4	.4	.4		

FACTORS	PROFILE 1	PROFILE 2	PROFILE 3	PROFILE 4	PROFILE 5
ESCAPE POSITION					
PE (%)					
HORIZON I DEPTH					
Soil Group					
Resistance					
Structure					
Mineralogy					
HORIZON II DEPTH					
Soil Group					
Resistance					
Structure					
Mineralogy					
HORIZON III DEPTH					
Soil Group					
Resistance					
Structure					
Mineralogy					
HORIZON IV DEPTH					
Soil Group					
Resistance					
Structure					
Mineralogy					
WETNESS					
PERMEABLE HORIZON					
ROLITE					
CLASSIFICATION					
LONG-TERM ACCEPTANCE RATE					

CLASSIFICATION: PS  
 EVALUATED BY: *Carlyle* SITE LONG-TERM ACCEPTANCE RATE: .4  
 OTHER(S) PRESENT:  
 RELOCATE HOUSE RIGHT  
 RELOCATE RAILROAD TRACKS  
 RELOCATE DRAINAGE