

**SITE/SOIL EVALUATION FOR ON-SITE WASTEWATER**

APPLICANT NAME \_\_\_\_\_

DATE \_\_\_\_\_

FACTORS		PROFILES												
		1	2	3	4	5	6	7	8	9	10			
LANDSCAPE POSITION	.1940													
SLOPE (%)	.1940													
HORIZON 1 DEPTH		0-26	0-28	0-26	0-28									
Texture Group	.1941(A)(1)	LS	LS	LS	LS									
Consistence	.1941													
Structure	.1941(A)(2)													
Mineralogy	.1941(A)(3)													
HORIZON 2 DEPTH		26-36		26-36	28-36									
Texture Group	.1941(A)(1)	SL		SL	SL									
Consistence	.1941													
Structure	.1941(A)(2)													
Mineralogy	.1941(A)(3)													
HORIZON 3 DEPTH		36-44		36-44	36-49									
Texture Group	.1941(A)(1)	LS		LS	LS									
Consistence	.1941													
Structure	.1941(A)(2)													
Mineralogy	.1941(A)(3)													
HORIZON 4 DEPTH														
Texture Group	.1941(A)(1)													
Consistence	.1941													
Structure	.1941(A)(2)													
Mineralogy	.1941(A)(3)													
SOIL WETNESS	.1942													
RESTRICTIVE HORIZON	.1944													
SAPROLITE	.1943/.1956													
CLASSIFICATION	.1948													
LONG TERM ACCEPTANCE RATE	.1955	8	8	8	8									

$$\begin{array}{r} 750 \\ 8 \overline{) 6000} \\ \underline{56} \\ 40 \\ \underline{40} \\ 0 \end{array}$$
 250'

2/16/98  
DATE

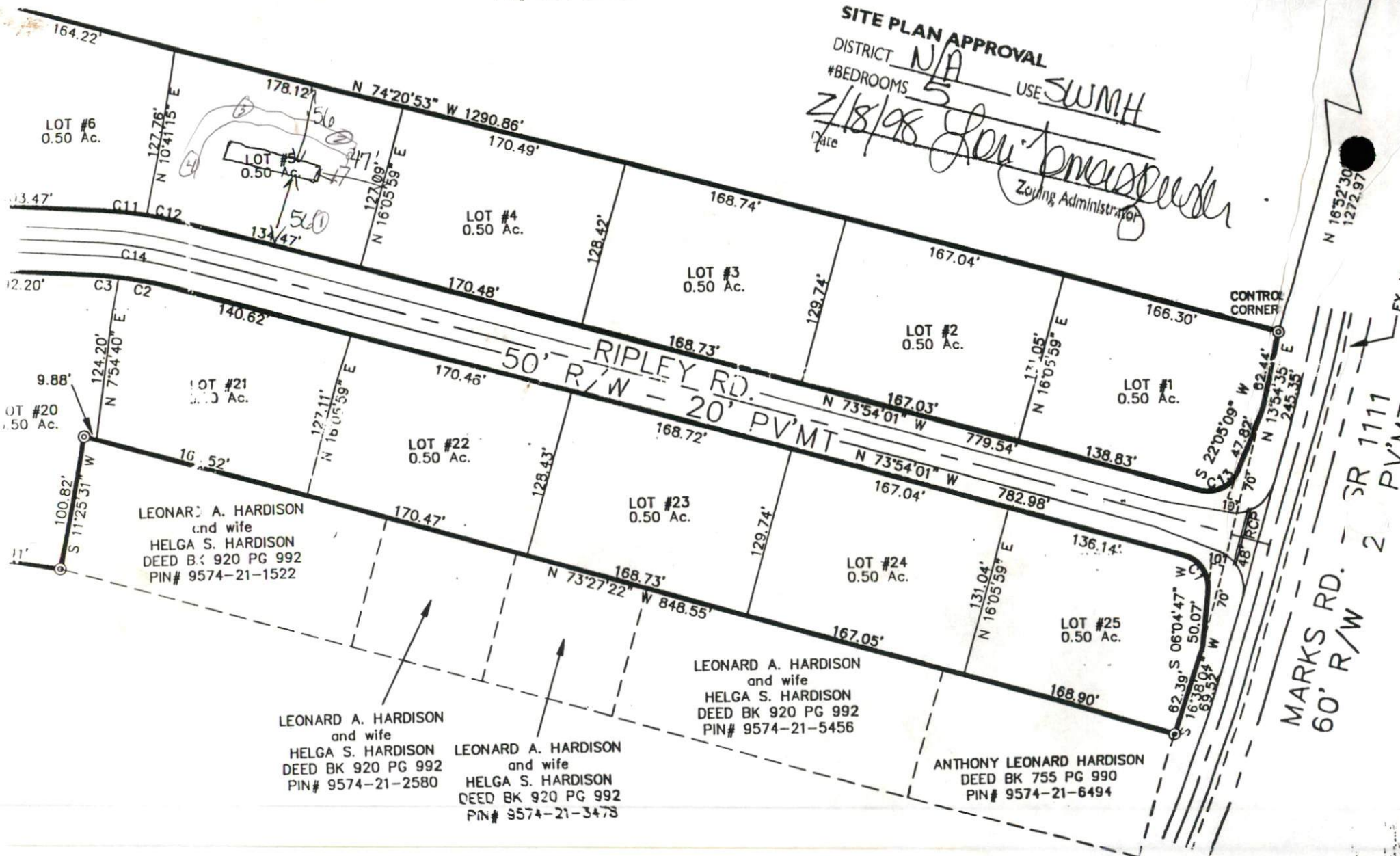
*Don B. Arlene*  
Chairman, Harnett County Board  
of Commissioners

REF: PC# F SLIDE 3

TIE LINE TO CENTERLINE  
MARKS RD. (SR 1111)

ALBERT STUTZ ESTATE  
PIN# 9574-22-2035

**SITE PLAN APPROVAL**  
DISTRICT N/A USE SWMH  
#BEDROOMS 5  
Date 2/18/98  
*John J. Brassefield*  
Zoning Administrator



N 16°52'30" E  
1272.97'

EX. HARNETT CO.  
6' WATER

MARKS RD. - SR 1111  
60' R/W - 2 PV'MT