

FOR QUESTIONS, CALL THE
Eastern North Carolina
REGION 36
PHONE: (919) 825 - 3566
EMAIL: reg36@captiveaire.com

PATENT NUMBERS

AC-PSP (UNITED STATES) - US PATENT 7963830 B2.
AC-PSP WALL (CANADA) - CA PATENT 2820509.
AC-PSP ISLAND (CANADA) - CA PATENT 2520330.

HOOD INFORMATION – JOB#7404748

HOOD NO	TAG	MODEL	MANUFACTURER	LENGTH	MAX COOKING TEMP	TYPE	APPLIANCE DUTY	DESIGN CFM/FT	TOTAL EXH CFM	EXHAUST PLENUM RISER(S)						TOTAL SUPPLY CFM	HOOD CONSTRUCTION	HOOD CONFIG		
										WIDTH	LENG	HEIGHT	DIA	CFM	VEL			SP	END TO END	ROW
1	FRONT COOK LINE	5424 ND-2-PSP-F	CAPTIVEAIRE	12' 0"	600 DEG	I	HEAVY	200	2400			4'	16"	2400	1719	-1062'	1920	430 SS WHERE EXPOSED	ALONE	ALONE
2	BACK COOK LINE	5424 ND-2-PSP-F	CAPTIVEAIRE	12' 0"	600 DEG	I	HEAVY	200	2400			4'	16"	2400	1719	-1062'	1920	430 SS WHERE EXPOSED	ALONE	ALONE

HOOD INFORMATION

HOOD NO	TAG	FILTER(S)					LIGHT(S)			UTILITY CABINET(S)						FIRE SYSTEM	HOOD HANGING WEIGHT
		TYPE	QTY	HEIGHT	LENGTH	EFFICIENCY @ 7 MICRONS	QTY	TYPE	WIRE GUARD	LOCATION	SIZE	TYPE	SIZE	MODEL #	QUANTITY		
1	FRONT COOK LINE	CAPTRATE SOLO FILTER	9	16"	16"	85% SEE FILTER SPEC	6	RECESSED ROUND	NO	RIGHT	12"x54"x24"	TANK FS	4.0/4.0	SC-311110MA	1 LIGHT 1 FAN	YES	1086 LBS
2	BACK COOK LINE	CAPTRATE SOLO FILTER	9	16"	16"	85% SEE FILTER SPEC	6	RECESSED ROUND	NO	LEFT	12"x54"x24"	TANK FS	4.0/4.0	SC-311110MA	1 LIGHT 1 FAN	YES	1086 LBS

HOOD OPTIONS

HOOD NO	TAG	OPTION
1	FRONT COOK LINE	FIELD WRAPPER 18.00' HIGH FRONT, LEFT, RIGHT.
		BACKSPLASH 80.00' HIGH X 156.00' LONG 430 SS VERTICAL.
		STRUCTURAL FRONT PANEL.
		INSULATION FOR BACK OF HOOD.
		RIGHT VERTICAL END PANEL 27" TOP WIDTH, 21" BOTTOM WIDTH, 80" HIGH INSULATED 430 SS.
2	BACK COOK LINE	LEFT VERTICAL END PANEL 27" TOP WIDTH, 21" BOTTOM WIDTH, 80" HIGH INSULATED 430 SS.
		FIELD WRAPPER 18.00' HIGH FRONT, LEFT, RIGHT.
		BACKSPLASH 80.00' HIGH X 156.00' LONG 430 SS VERTICAL.
		STRUCTURAL FRONT PANEL.
		INSULATION FOR BACK OF HOOD.
		RIGHT VERTICAL END PANEL 27" TOP WIDTH, 21" BOTTOM WIDTH, 80" HIGH INSULATED 430 SS.
		LEFT VERTICAL END PANEL 27" TOP WIDTH, 21" BOTTOM WIDTH, 80" HIGH INSULATED 430 SS.

PERFORATED SUPPLY PLENUM(S)

HOOD NO	TAG	POS	LENGTH	WIDTH	HEIGHT	TYPE	RISER(S)				
							WIDTH	LENG	DIA	CFM	SP
1	FRONT COOK LINE	Front	156"	14"	6"	MUA	8"	36"		640	0.183"
						MUA	8"	36"		640	0.183"
						MUA	8"	36"		640	0.183"
2	BACK COOK LINE	Front	156"	14"	6"	MUA	8"	36"		640	0.183"
						MUA	8"	36"		640	0.183"
						MUA	8"	36"		640	0.183"

SPECIFICATION: CAPTRATE® GREASE-STOP® SOLO FILTER

THE CAPTRATE GREASE-STOP SOLO FILTER IS A SINGLE-STAGE FILTER FEATURING A UNIQUE S-BAFFLE DESIGN IN CONJUNCTION WITH A SLOTTED REAR BAFFLE DESIGN, TO DELIVER EXCEPTIONAL FILTRATION EFFICIENCY.

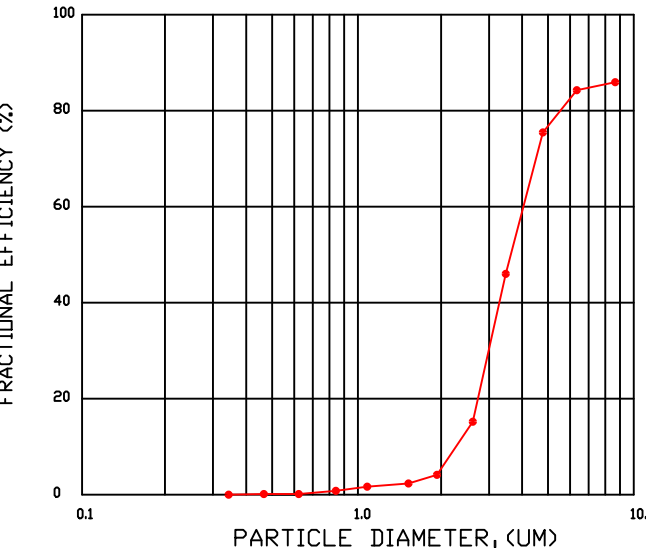
FILTER IS STAINLESS STEEL CONSTRUCTION, AND SIZED TO FIT INTO STANDARD 2-INCH DEEP HOOD CHANNEL(S).

UNITS SHALL INCLUDE STAINLESS STEEL HANDLES AND A FASTENING DEVICE TO SECURE THE TWO COMPONENTS WHEN ASSEMBLED.

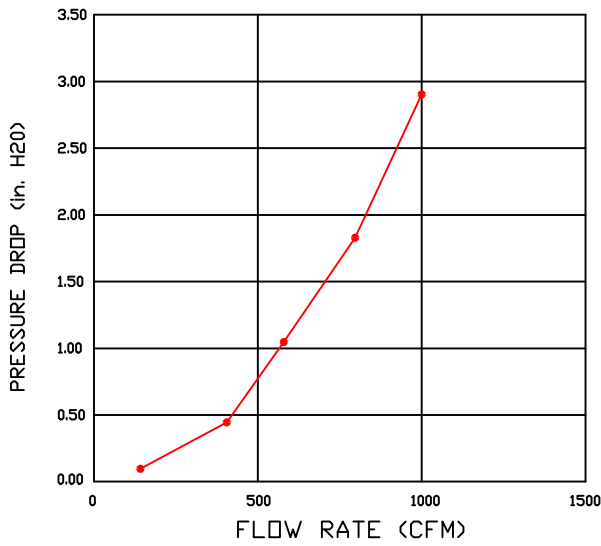
GREASE EXTRACTION EFFICIENCY PERFORMANCE SHALL REMOVE AT LEAST 75% OF GREASE PARTICLES FIVE MICRONS IN SIZE, AND 85% GREASE PARTICLES SEVEN MICRONS IN SIZE AND LARGER, WITH A CORRESPONDING PRESSURE DROP NOT TO EXCEED 1.0 INCHES OF WATER GAUGE.

THE CAPTRATE GREASE-STOP SOLO WAS TESTED TO ASTM STANDARD ASTM F2519-05. MANUFACTURER APPROVED FOR USE IN SOLID FUEL APPLICATIONS AS A SPARK ARRESTER.

EFFICIENCY VS. PARTICLE DIAMETER



PRESSURE DROP VS. FLOW RATE



CAPTRATE FILTERS ARE BUILT IN COMPLIANCE WITH:
NFPA #96.
NSF STANDARD #2.
UL STANDARD #1046.
INT. MECH. CODE (IMC).
ULC-S649.



GREASE DUCT & CHIMNEY SPECIFICATIONS:
PROVIDE GREASE DUCT EQUAL TO CAPTIVEAIRE SYSTEMS MODEL "DW"
ROUND 20 GAUGE 430 STAINLESS STEEL DUCTWORK. MODEL "DW"
IS LISTED TO UL-1978 AND IS INSTALLED USING "V" CLAMP LOCKING
CONNECTIONS SEALED WITH 3M FIRE BARRIER 2000 PLUS. MODEL "DW"
DOES NOT REQUIRE WELDING PROVIDING IT HAS BEEN INSTALLED PER
THE MANUFACTURES INSTALLATION GUIDE.
PROVIDE RATED ACCESS DOORS AT EVERY CHANGE IN DIRECTION AND EVERY 12' ON CENTER.
PER MANUFACTURES LISTING MODEL "DW" HORIZONTAL RUNS LESS THAN 75 FT. CAN BE
SLOPED 1/16" PER 12", HORIZONTAL RUNS MORE THAN 75 FT. CAN BE SLOPED 3/16" PER 12".
DUCT SHOULD BE SLOPED AS MUCH AS POSSIBLE TO REDUCE THE CHANCE OF GREASE
ACCUMULATION IN HORIZONTAL RUNS.

IF THE DUCT OR CHIMNEY IS WITHIN 18 INCHES OF COMBUSTIBLE MATERIAL, PROVIDE
UL-2221 OR UL-103 HT LISTED DOUBLE WALL GREASE DUCT OR DOUBLE WALL CHIMNEY
EQUAL TO CAPTIVEAIRE SYSTEMS MODEL "DW- 2R, 2R TYPE HT, 3R, OR 3Z" ROUND 20 GAUGE
430 STAINLESS INNER DUCT INSULATED WITH A 24 GAUGE 430 STAINLESS OUTER SHELL.

CAPTIVEAIRE SYSTEMS RECOMMENDS THE USE
OF LISTED, PRE-FABRICATED ROUND GREASE
EXHAUST DUCT TO REDUCE STATIC PRESSURE
IN THE SYSTEM, MINIMIZE INSTALLATION AND
INSPECTION TIMES, AND ENSURE DUCT IS
LIQUID TIGHT

HVAC DISTRIBUTION NOTE

HIGH VELOCITY DIFFUSERS OR HVAC RETURNS
SHOULD NOT BE PLACED WITHIN TEN (10) FEET
OF THE EXHAUST HOOD. PERFORATED
DIFFUSERS ARE RECOMMENDED.

VERIFY CEILING HEIGHT

___' - ___"

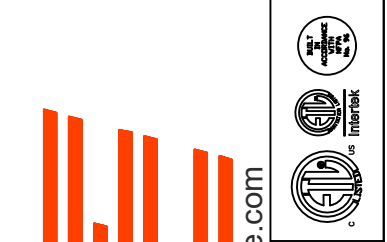
HEIGHT REQUIRED TO VERIFY THAT HOOD FITS SPACE AND TO SIZE THE ENCLOSURE PANELS

CUSTOMER APPROVAL TO MANUFACTURE:

APPROVED AS NOTED ☐
APPROVED WITH NO EXCEPTION TAKEN ☐
REVISE AND RESUBMIT ☐
SIGNATURE _____
YOUR TITLE _____ DATE _____

REVISIONS

DESCRIPTION	DATE:
Δ	
Δ	
Δ	
Δ	



www.captiveaire.com

Eastern North Carolina

4641 Paragon Park Rd., Raleigh, NC, 27616 PHONE: (919) 825 - 3566 FAX: 9192275917 EMAIL: reg36@captiveaire.com

Daddy D's BBQ - Angier
ANGIER, NC, 27501

DATE: 3/14/2025

DWG.#:
7404748

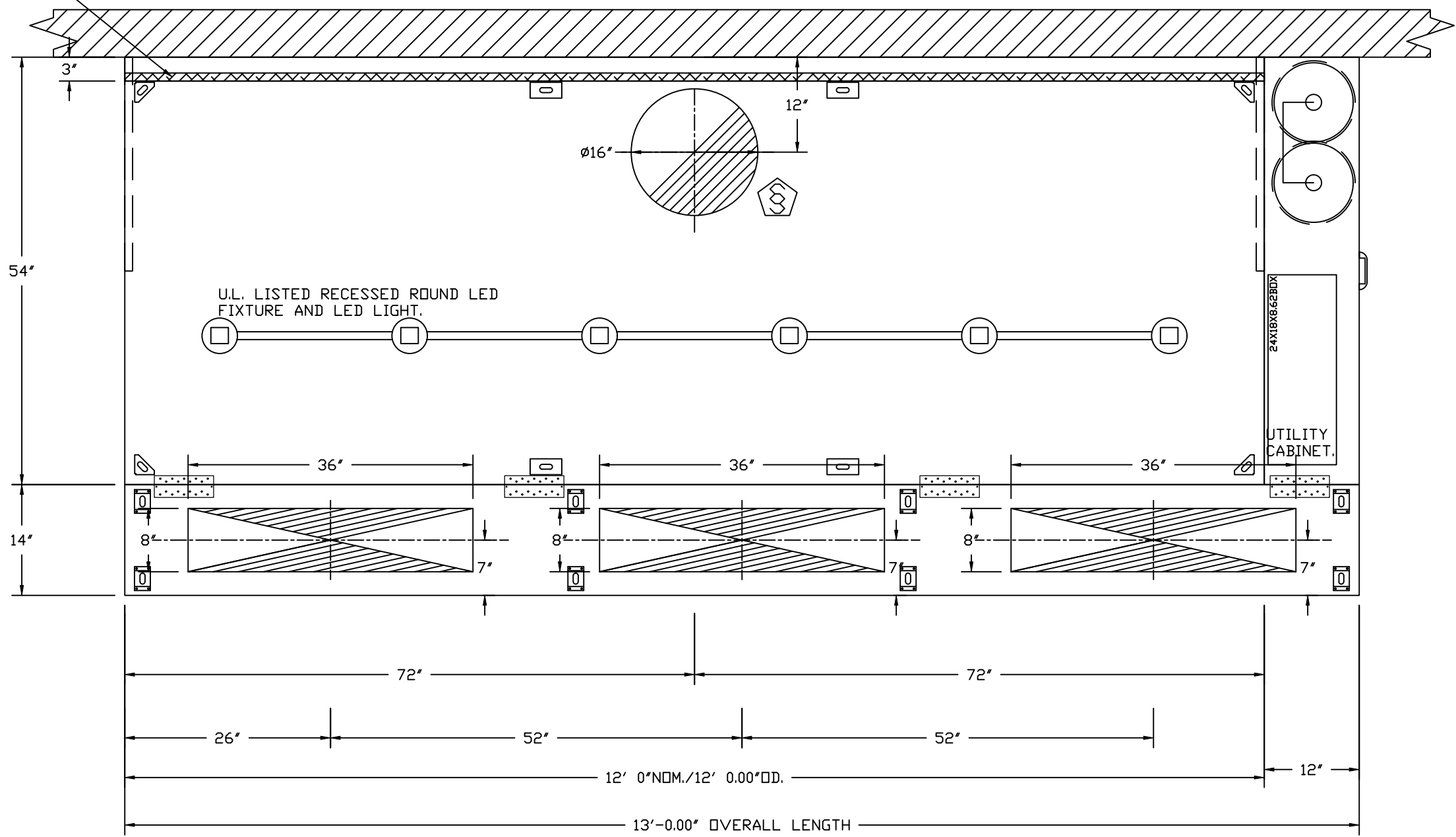
DRAWN BY: REG 36

SCALE:
3/4" = 1'-0"

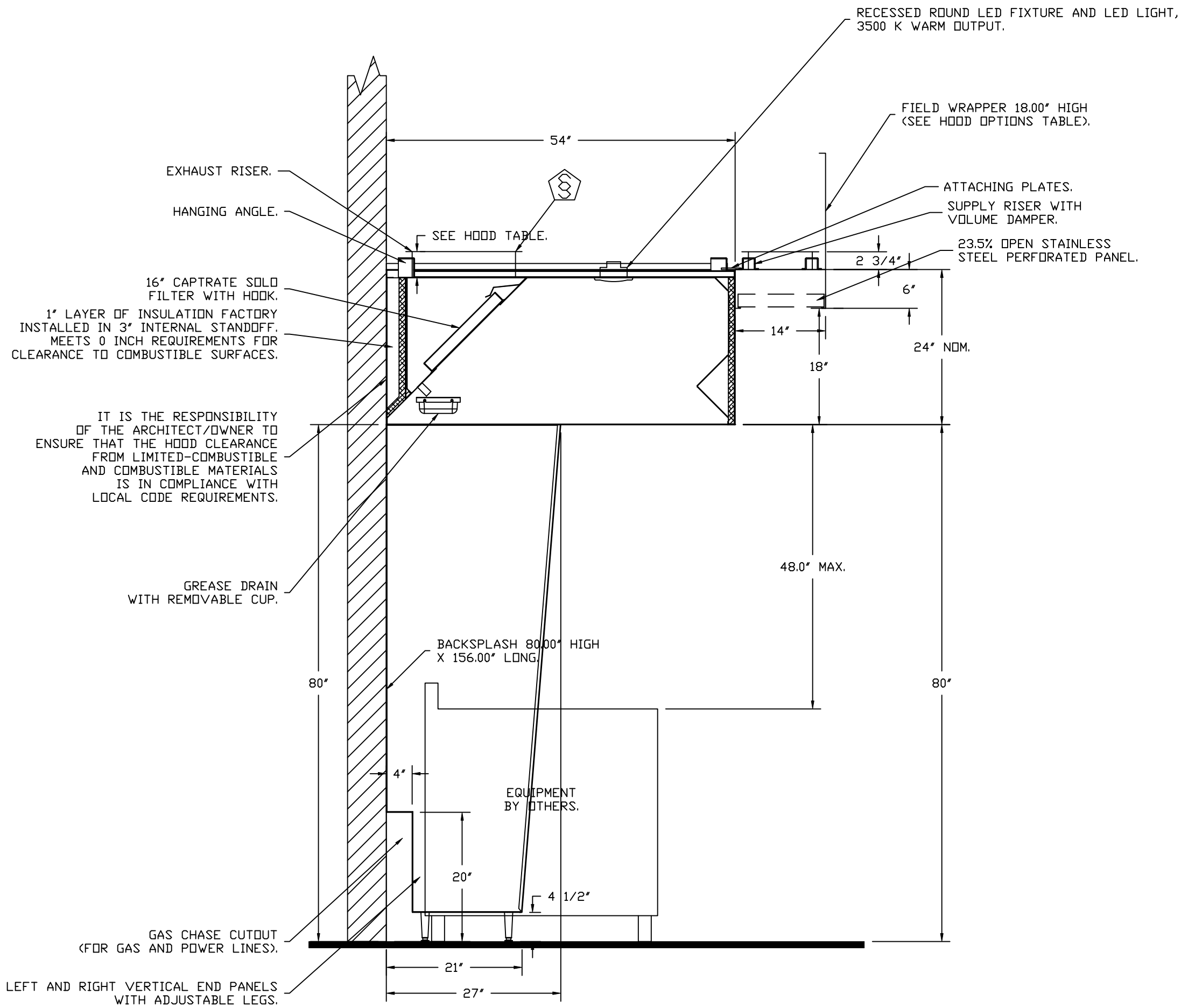
MASTER DRAWING

SHEET NO.
1

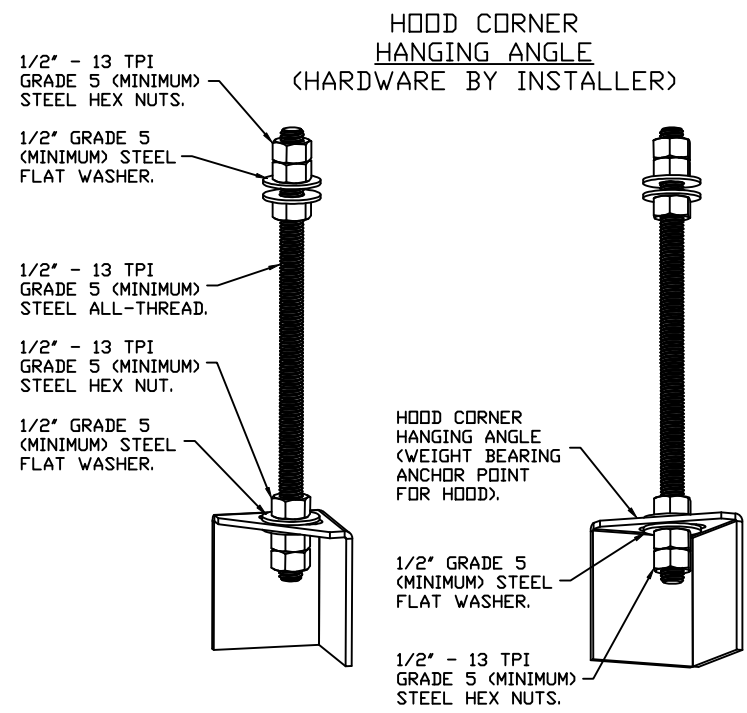
1" LAYER OF INSULATION FACTORY
INSTALLED IN INTERNAL BACK STANDOFF.
MEETS 0 INCH REQUIREMENTS FOR
CLEARANCE TO COMBUSTIBLE SURFACES.



PLAN VIEW - HOOD #1 (FRONT COOK LINE)
12' 0.00" LONG 5424ND-2-PSP-F
NOTE: ADDITIONAL HANGING ANGLES PROVIDED FOR HOODS 12' AND LONGER.



SECTION VIEW - MODEL 5424ND-2-PSP-F
HOOD - #1 (FRONT COOK LINE)



ASSEMBLY INSTRUCTIONS

HANGING ANGLE MUST BE SUPPORTED WITH 1/2" - 13 TPI GRADE 5 (MINIMUM) ALL-THREAD. SANDWICH HANGING ANGLES AND CEILING ANCHOR POINTS WITH 1/2" GRADE 5 (MINIMUM) STEEL FLAT WASHERS AND 1/2" - 13 TPI GRADE 5 (MINIMUM) HEX NUTS AS SHOWN. MUST USE DOUBLED HEX NUT CONFIGURATION BENEATH HOOD HANGING ANGLES AND ABOVE CEILING ANCHORS. MAINTAIN 1/4" OF EXPOSED THREADS BENEATH BOTTOM HEX NUT. TORQUE ALL HEX NUTS TO 57 FT-LBS.

REVISIONS

DESCRIPTION	DATE:

CAPTIVE

Eastern North Carolina

4641 Paragon Park Rd., Raleigh, NC, 27616 PHONE: (919) 825 - 3566 FAX: 9192275917 EMAIL: reg36@captiveaire.com

www.captiveaire.com

reg36@captiveaire.com

Daddy D's BBQ - Angier

ANGIER, NC, 27501

DATE: 3/14/2025

DWG.#: 7404748

DRAWN BY: REG 36

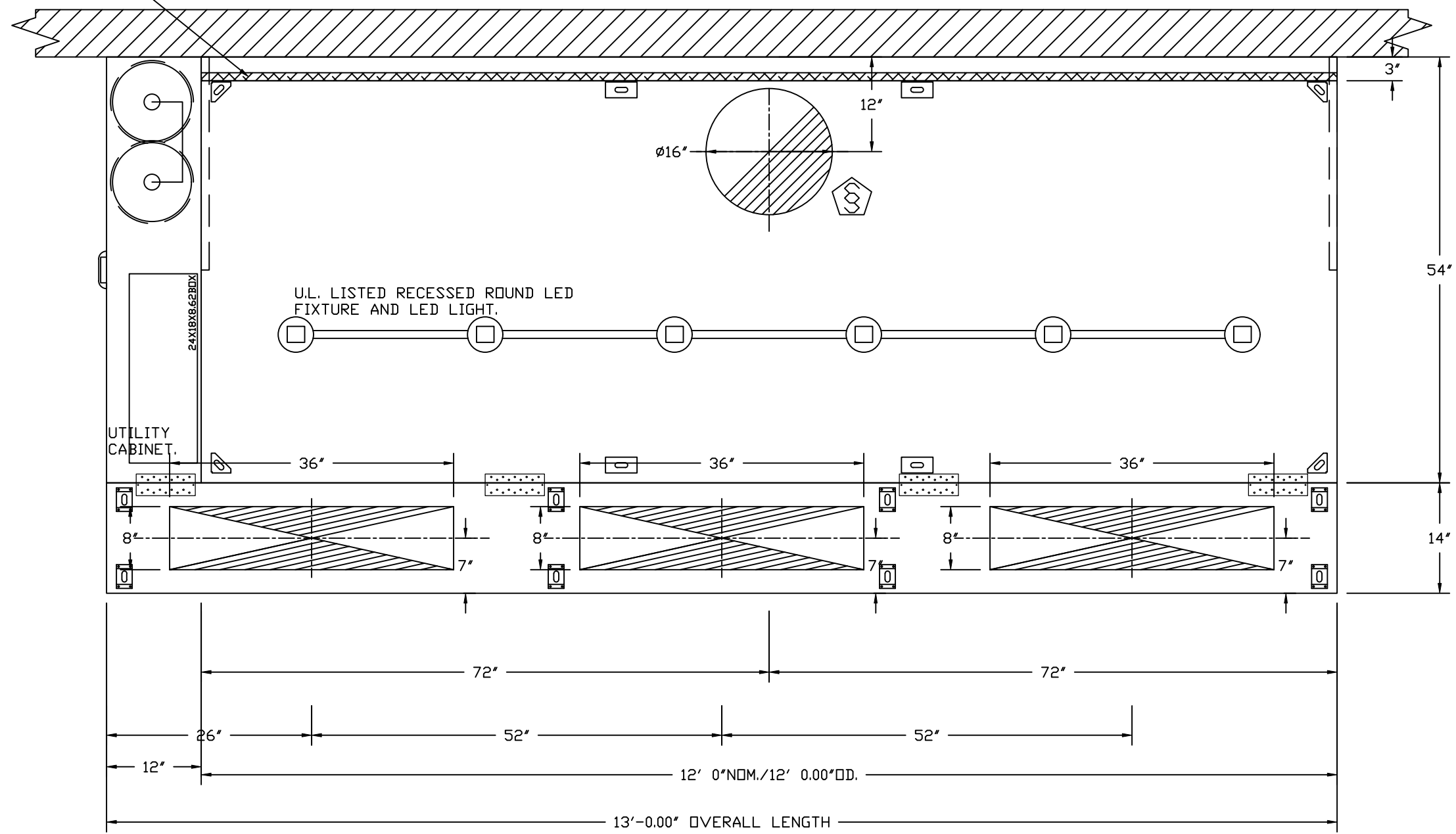
SCALE: 3/4" = 1'-0"

MASTER DRAWING

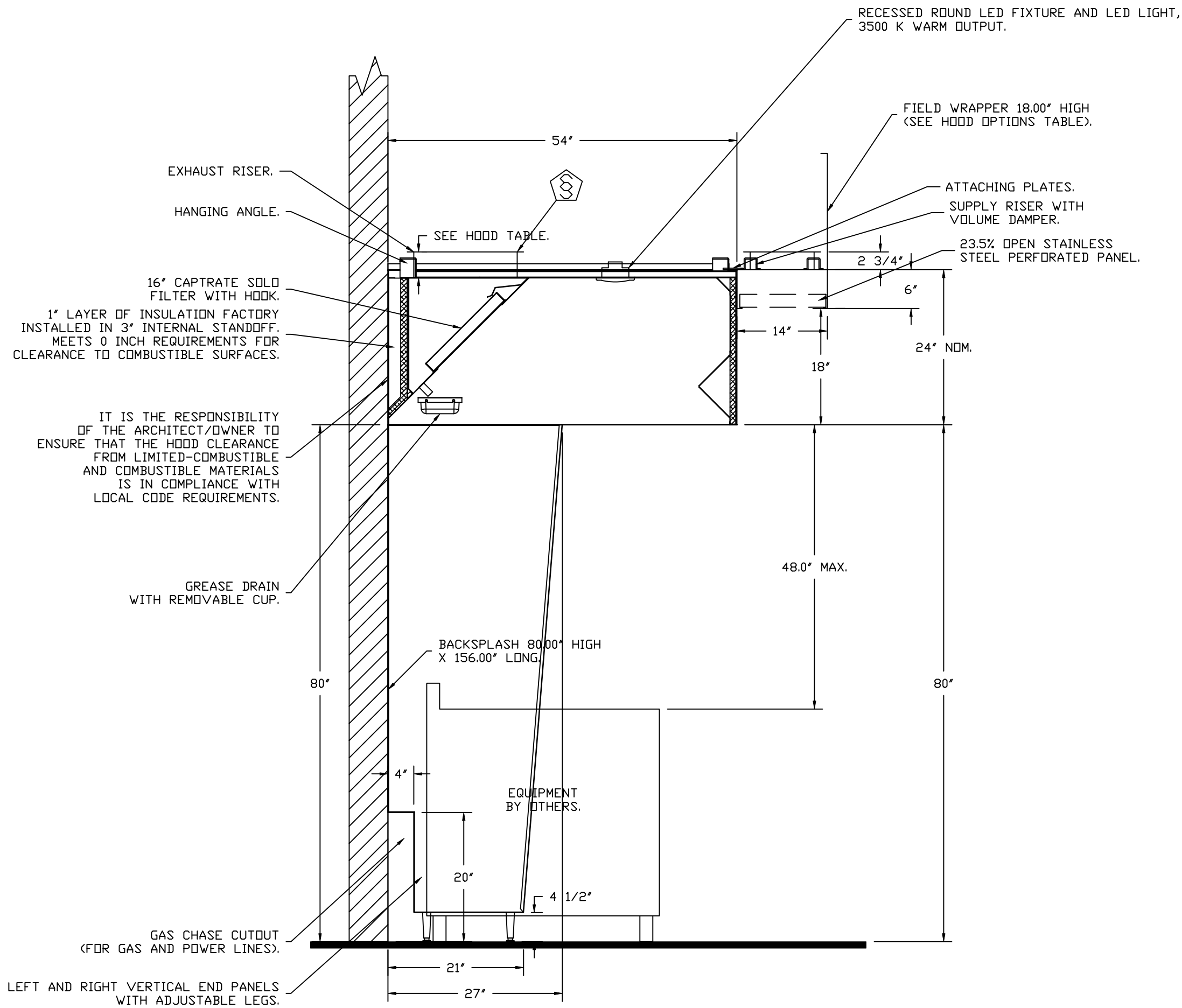
SHEET NO.

2

1" LAYER OF INSULATION FACTORY
INSTALLED IN INTERNAL BACK STANDOFF.
MEETS 0 INCH REQUIREMENTS FOR
CLEARANCE TO COMBUSTIBLE SURFACES.

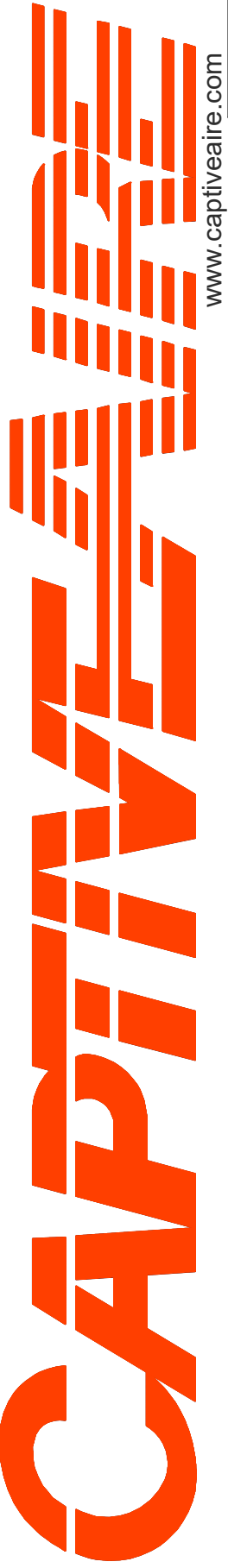


PLAN VIEW - HOOD #2 (BACK COOK LINE)
12' 0.00" LONG 5424ND-2-PSP-F
NOTE: ADDITIONAL HANGING ANGLES PROVIDED FOR HOODS 12" AND LONGER.



SECTION VIEW - MODEL 5424ND-2-PSP-F
HOOD - #2 (BACK COOK LINE)

REVISIONS	
DESCRIPTION	DATE:
Δ	
Δ	
Δ	
Δ	

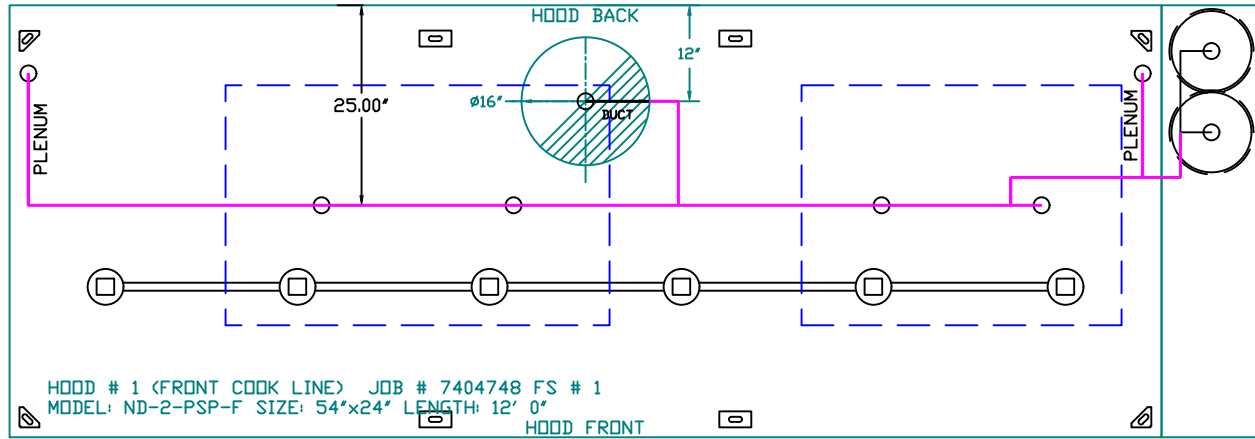


Eastern North Carolina
www.captiveaire.com
4641 Paragon Park Rd., Raleigh, NC, 27616 PHONE: (919) 825 - 3566 FAX: 9192275917 EMAIL: reg36@captiveaire.com

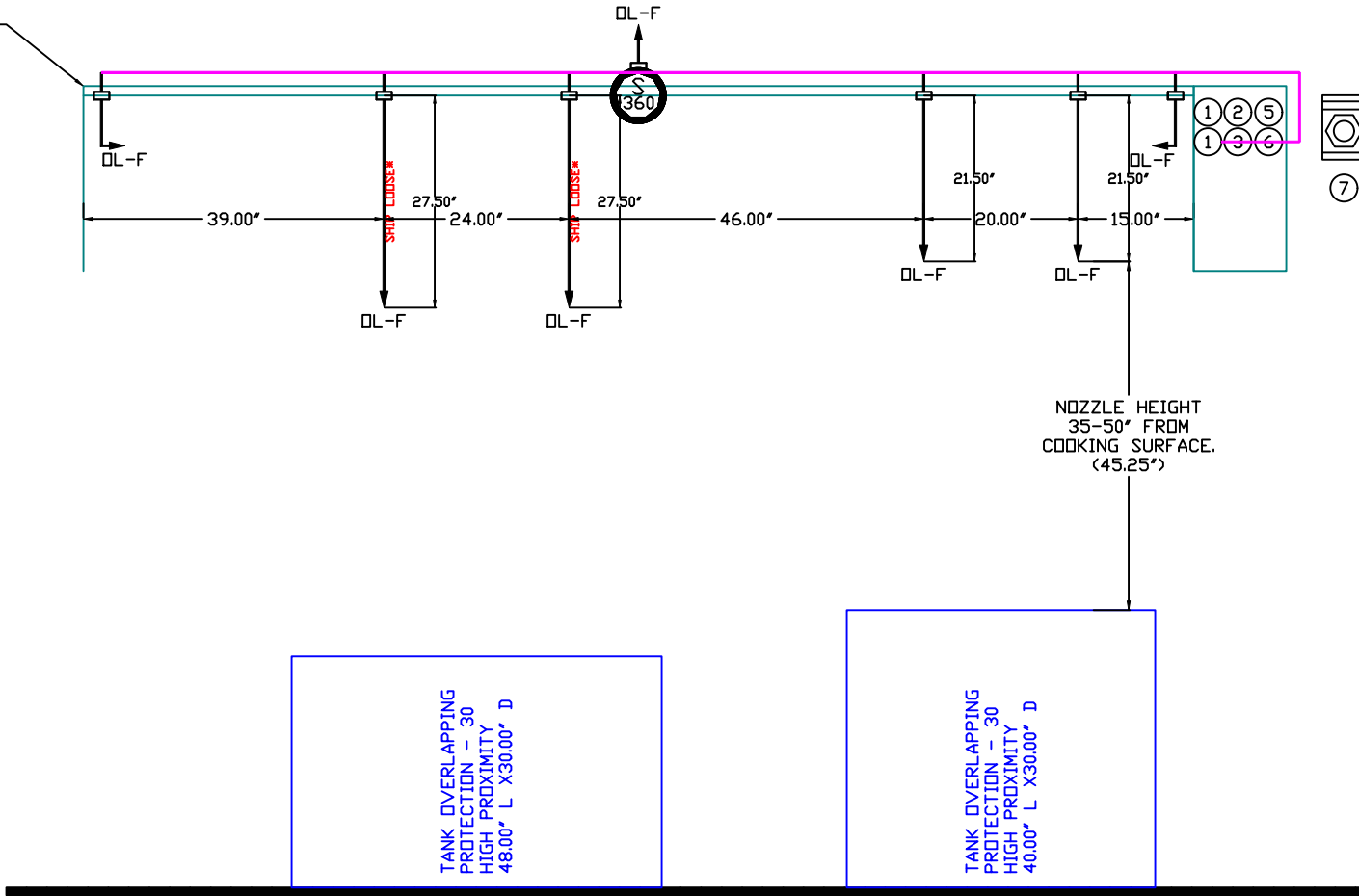
Daddy D's BBQ - Angier
ANGIER, NC, 27501

DATE: 3/14/2025
DWG.#: 7404748
DRAWN BY: REG 36
SCALE: 3/4" = 1'-0"
MASTER DRAWING

SHEET NO.
3



FACTORY PIPING EXTENDS A MAXIMUM OF 6" ABOVE THE TOP OF THE HOOD.



UL 300 HOOD FIRE SUPPRESSION SYSTEM

TANK/CAS ELECTRIC WET CHEMICAL

The TANK / CAS-EWC Fire Suppression System has been tested and certified to the UL 1254 Standard for Pre-Engineered Chemical Extinguishing System Units and UL/ULC 980 Standard for Fire Extinguishing Systems for Protection of Commercial Cooking Equipment and is listed with Underwriters Laboratories (UL) under file number EX3559.

SEQUENCE OF OPERATIONS
The TANK / CAS-EWC fire system is a self-contained pressurized fire suppression system. TANK / CAS-EWC is activated when the electric firestat contacts close (at determined firestat setting and/or temperature rate-of-rise of 40°F per minute) and/or the manual activation station is pushed, an electric signal is sent to the release solenoid of the fire system. When the release solenoid is opened, it allows stored pressure from the primary tank to travel through the primary actuator kit opening a pneumatic actuator. The pneumatic actuator forces the plunger in the tank valve body to open, allowing the liquid fire suppressant to be distributed throughout the fire system piping network over the protected hazard area.

- NOTES**
- FIELD PIPE DROPS AS SHOWN.
 - PIPING, ELBOWS, TEES, AND NOZZLES SUPPLIED BY CAS.
 - FIELD INSTALLED DROP: FACTORY WILL PROVIDE QTY 2 60IN LONG PIECES OF CHROME PLATED PIPING SHIPPED LOOSE TO BE FIELD-INSTALLED.
 - SHIP LOOSE DROP: FACTORY WILL PROVIDE THE EXACT CHROME PIPE LENGTH NEEDED SHIPPED LOOSE TO BE FIELD-INSTALLED.
 - RELOCATE NOZZLES IF FLOW PATTERN IS BLOCKED BY SHELVEING, SALAMANDERS, ETC.
 - OVERLAPPING COVERAGE SHALL NOT BE USED ON ANY APPLIANCE WITH AN OBSTRUCTION.
 - IF APPLICABLE, EXTENDED PRE-PIPED DROPS ARE SHIPPED LOOSE.
 - FACTORY PIPING EXTENDS A MAXIMUM OF 6" ABOVE THE TOP OF THE HOOD.
 - APPLIANCE DIMENSIONS LISTED REPRESENT THE COOKING SURFACE SIZE, NOT THE OVERALL APPLIANCE SIZE.
 - THIS PRE-ENGINEERED FIRE SYSTEM COMPLIES WITH UL 300 REQUIREMENTS.

- DL-F NOZZLE PART NUMBER REPLACES 3070-3/8H-10-SS
JOB #: 7404748
JOB NAME: DADDY D'S BBQ - ANGLIER.

SYSTEM SIZE: TANK-SP-2 DESIGN FP: 32, MAXIMUM FP: 40.
HOOD # 1 12' 0.00' LONG X 54" WIDE X 24" HIGH.
RISER # 1 SIZE: 16" DIA.
HOOD # 1 METAL BLOW-OFF CAPS INCLUDED.

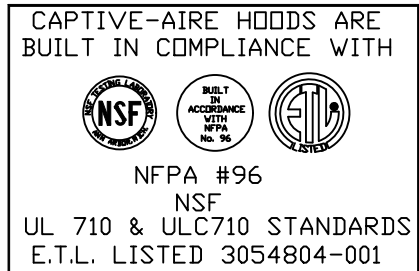
- HEAVY-DUTY APPLIANCES (RATED 600°F) WILL REQUIRE AN ADDITIONAL DOWNSTREAM FIRESTAT IN THE EVENT THAT THE DUCTWORK CONTAINS ANY HORIZONTAL RUNS OVER 25 FT IN LENGTH.
- MEDIUM TO LIGHT-DUTY APPLIANCES (RATED 450°F) WILL NOT REQUIRE ANY ADDITIONAL DOWNSTREAM DETECTION.

AGENT DISTRIBUTION PIPING LIMITATIONS	
PIPE SECTION	MAX PIPE LENGTH (FT)
MAX SUPPLY LINE TO FIRST OVERLAPPING NOZZLE	42
OVERLAPPING NOZZLE APPLIANCE BRANCH	10
DEDICATED NOZZLE APPLIANCE BRANCH	10

LEGEND - FIRE CABINET TANK SYSTEM

- 1 4 GALLON TANK.
- 2 PRIMARY ACTUATOR RELEASE.
- 3 SECONDARY ACTUATOR RELEASE.
- 4 PRESSURE SUPERVISION SWITCH.
- 5 PRIMARY HOSE ASSEMBLY.
- 6 SECONDARY HOSE ASSEMBLY.
- 7 REMOTE MANUAL ACTUATION DEVICE.

CAPTIVE-AIRE HOODS ARE BUILT IN COMPLIANCE WITH:



FOR QUESTIONS
CONTACT: REGION 36
EASTERN NORTH CAROLINA
PHONE: (919) 885-3566
EMAIL: REG36@CAPTIVEAIRE.COM

REVISIONS

DESCRIPTION	DATE:
Δ	
Δ	
Δ	
Δ	
Δ	

CAPTIVE-AIRE

www.captiveaire.com

Eastern North Carolina

4641 Paragon Park Rd., Raleigh, NC, 27616 PHONE: (919) 825 - 3566 FAX: 9192275917 EMAIL: reg36@captiveaire.com

Daddy D's BBQ - Angier

ANGIER, NC, 27501

DATE: 3/14/2025

DWG.#: 7404748

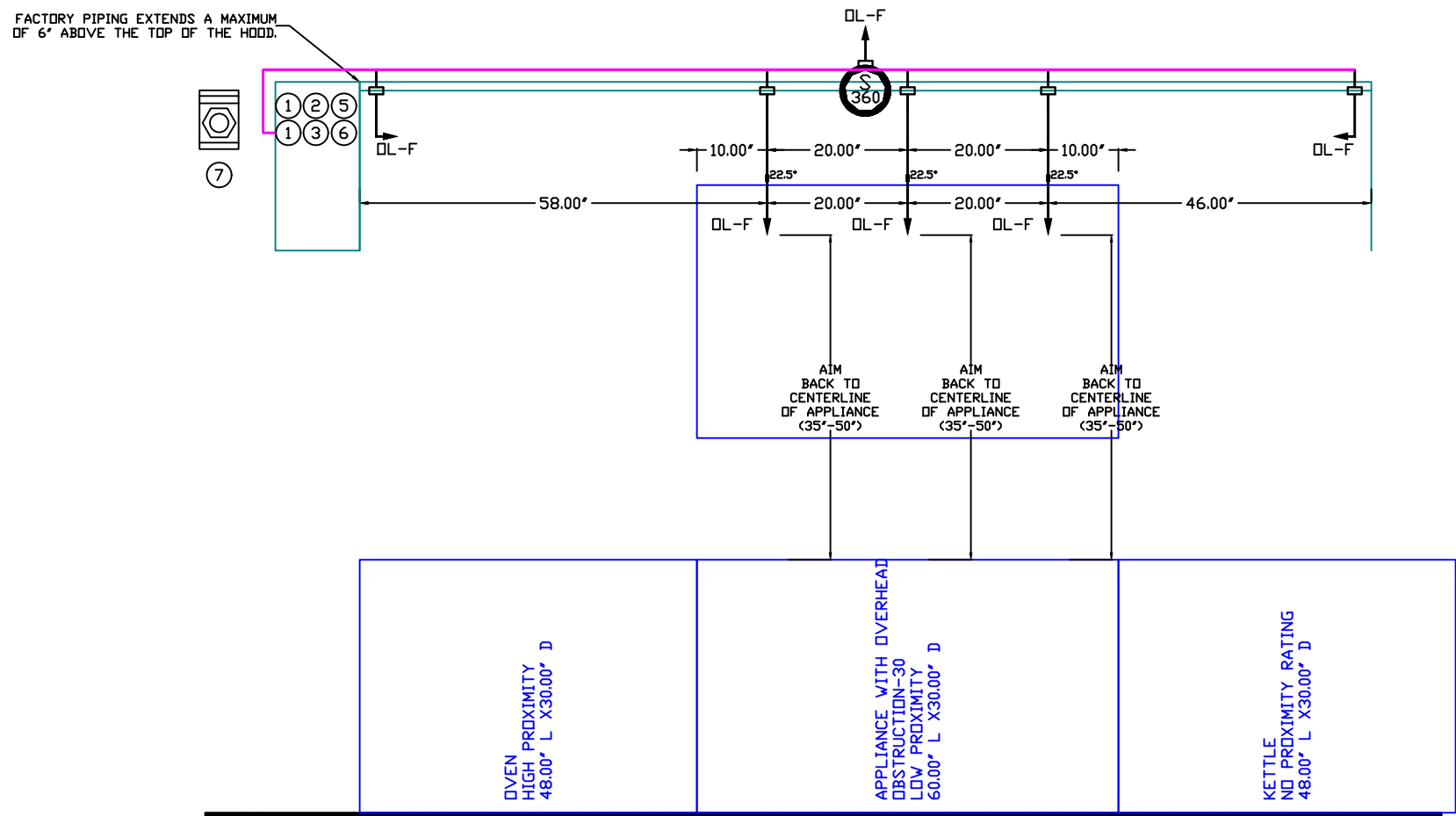
DRAWN BY: REG 36

SCALE: 1/2" = 1'-0"

MASTER DRAWING

SHEET NO.

4



The TANK / CAS-EWC Fire Suppression System has been tested and certified to the UL 1254 Standard for Pre-Engineered Chemical Extinguishing System Units and UL/ULC 300 Standard for Fire Extinguishing Systems for Protection of Commercial Cooking Equipment and is listed with Underwriters Laboratories (UL) under file number EX3559.

- NOTES
- PIPING PIPE DROPS AS SHOWN
- PIPING ELBOWS, TEES, AND NOZZLES SUPPLIED BY CAS.
- FIELD INSTALLED DROP FACTORY WILL PROVIDE QTY 2 60IN LONG PIECES OF CHROME PLATED PIPING SHIPPED LOOSE TO BE FIELD-INSTALLED.
- SHIPMENTS TO BE FIELD-INSTALLED PROVIDE THE EXACT CHROME PIPE LENGTH NEEDED SHIPPED LOOSE TO BE FIELD-INSTALLED.
- RELOCATE NOZZLES IF FLOW PATTERN IS BLOCKED BY SHELVING,
- SALAMANDERS, ETC.
- OVERLAPPING COVERAGE SHALL NOT BE USED ON ANY APPLIANCE WITH AN OBSTRUCTION. IF APPLICABLE, EXTENDED PRE-PIPED DROPS ARE SHIPPED LOOSE.
- FACTORY PIPING EXTENDS A MAXIMUM OF 6" ABOVE THE TOP OF THE HOOD.
- APPLIANCE DIMENSIONS LISTED REPRESENT THE COOKING SURFACE SIZE, NOT THE OVERALL APPLIANCE SIZE.
- THIS PRE-ENGINEERED FIRE SYSTEM COMPLIES WITH UL 300 REQUIREMENTS.

- OL-F NOZZLE PART NUMBER REPLACES 3070-3/8H-10-SS

JOB #: 7404748.
JOB NAME: DADDY D'S BBQ - ANGIER.

SYSTEM SIZE: TANK-SP-2 DESIGN FP: 24, MAXIMUM FP: 40.
HOOD # 2 12' 0.00' LONG x 54' WIDE x 24' HIGH.
RISER # 1 SIZE: 16" DIA.
HOOD # 2 METAL BLOW-OFF CAPS INCLUDED.

- HEAVY-DUTY APPLIANCES (RATED 600°F) WILL REQUIRE AN ADDITIONAL DOWNSTREAM FIRESTAT IN THE EVENT THAT THE DUCTWORK CONTAINS ANY HORIZONTAL RUNS OVER 25 FT IN LENGTH.
- MEDIUM TO LIGHT-DUTY APPLIANCES (RATED 450°F) WILL NOT REQUIRE ANY ADDITIONAL DOWNSTREAM DETECTION.

AGENT DISTRIBUTION PIPING LIMITATIONS	
PIPE SECTION	MAX PIPE LENGTH (FT)
MAX SUPPLY LINE TO FIRST OVERLAPPING NOZZLE	42
OVERLAPPING NOZZLE APPLIANCE BRANCH	10
DEDICATED NOZZLE APPLIANCE BRANCH	10

LEGEND - FIRE CABINET TANK SYSTEM

- 1 4 GALLON TANK.
2 PRIMARY ACTUATOR RELEASE.
3 SECONDARY ACTUATOR RELEASE.
4 PRESSURE SUPERVISION SWITCH.
5 PRIMARY HOSE ASSEMBLY.
6 SECONDARY HOSE ASSEMBLY.
7 REMOTE MANUAL ACTUATION DEVICE.

SEQUENCE OF OPERATIONS

The TANK / CAS-EVC fire system is a self-contained pressurized fire suppression system. TANK / CAS-EVC is activated when the electric firestat contacts close (at determined firestat setting and/or temperature rate-of-rise of 40°F per minute) or the firestat contacts are closed manually. When the firestat contacts close to the release solenoid of the fire system, when the release solenoid is opened, it allows stored pressure from the primary tank to travel through the primary actuator kit opening a pneumatic actuator. The pneumatic actuator forces the plunger in the tank valve body to open, allowing the fire suppressant to be distributed throughout the fire system piping network over the protected hazard area.

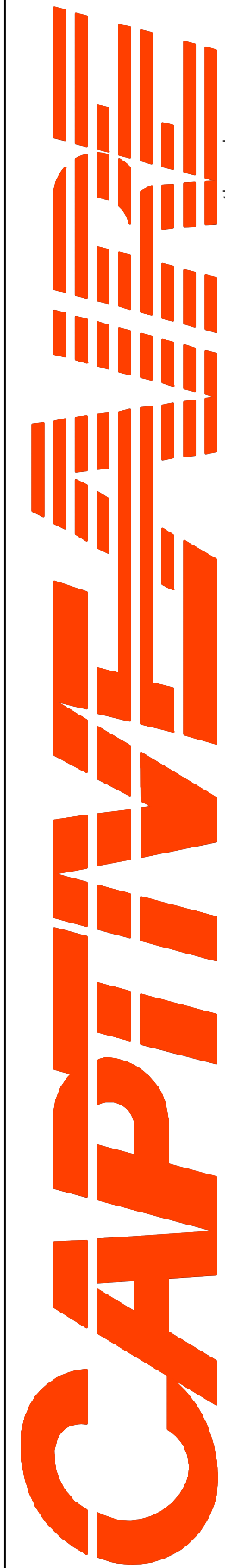
CAPTIVE-AIRE HOODS ARE BUILT IN COMPLIANCE WITH:



FOR QUESTIONS
CONTACT: REGION 36
EASTERN NORTH CAROLINA
PHONE: (919) 825-3566
EMAIL: REG36@CAPTIVEAIRE.COM

REVISIONS

DESCRIPTION		DATE:
△		
△		
△		
△		



www.captiveaire.com

Eastern North Carolina

Daddy D's BBQ - Angier
ANGIER, NC, 27501

DATE: 3/14/2025

DWG.#:
7404748

DRAWN BY: REG 36

SCALE:
1/2" = 1'-0"

MASTER DRAWING

SHEET NO.

EXHAUST FAN INFORMATION - JOB#7404748

FAN UNIT NO	TAG	QTY	FAN UNIT MODEL #	MANUFACTURER	CFM	ESP	RPM	MOTOR ENCL	HP	BHP	PHASE	VOLT	FLA	DISCHARGE VELOCITY	WEIGHT (LBS)	SDNES
1	KEF-1	1	DUI80HF	CAPTIVEAIRE	2400	1.300	1156	DDP,PREMIUM	2.000	1.0790	3	208	6.1	554 FPM	159	13.8
2	KEF-2	1	DUI80HF	CAPTIVEAIRE	2400	1.300	1156	DDP,PREMIUM	2.000	1.0790	3	208	6.1	554 FPM	159	13.8

MUA FAN INFORMATION - JOB#7404748

FAN UNIT NO	TAG	QTY	FAN UNIT MODEL #	BLOWER	HOUSING	MIN CFM	DESIGN CFM	ESP	RPM	MOTOR ENCL	HP	BHP	PHASE	VOLT	FLA	MCA	MOCp	WEIGHT (LBS)	SONES
3	KMUA-1	1	A1-15D	15MF-1-MOD	A1	-	1920	0.500	1788	DDP,PREMIUM	1.500	0.9080	3	208	4.4	5.5A	15A	287	22.8
4	KMUA-2	1	A1-15D	15MF-1-MOD	A1	-	1920	0.500	1788	DDP,PREMIUM	1.500	0.9080	3	208	4.4	5.5A	15A	287	22.8

FAN OPTIONS

FAN UNIT NO	TAG	QTY	DESCRIPTION
1	KEF-1	1	GREASE BOX
		1	2 YEAR PARTS WARRANTY
2	KEF-2	1	GREASE BOX
		1	2 YEAR PARTS WARRANTY
3	KMUA-1	1	SIZE 1 UNTEMPERED COMMERCIAL DOWN DISCHARGE FOR DIRECT DRIVE AHUS
		1	2 YEAR PARTS WARRANTY
4	KMUA-2	1	SIZE 1 UNTEMPERED COMMERCIAL DOWN DISCHARGE FOR DIRECT DRIVE AHUS
		1	2 YEAR PARTS WARRANTY

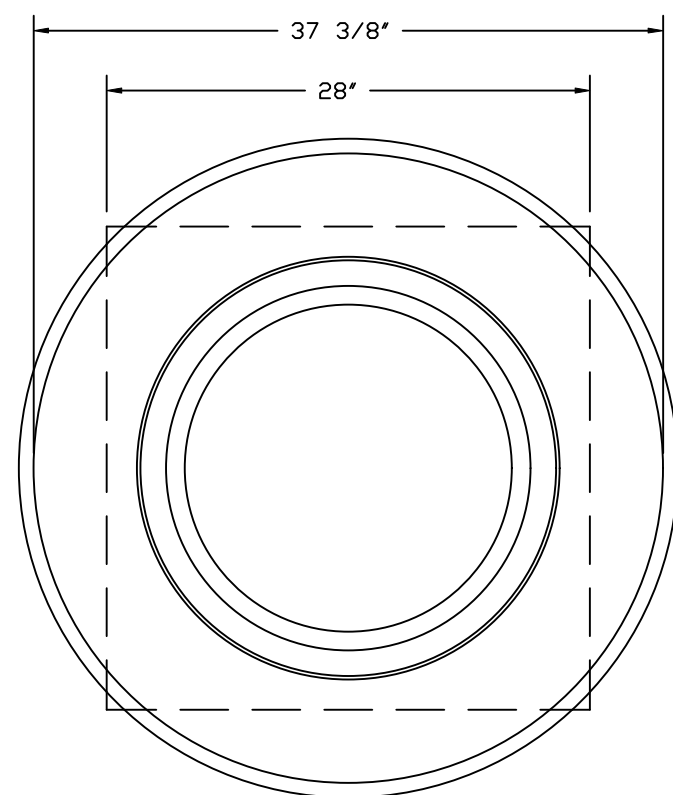
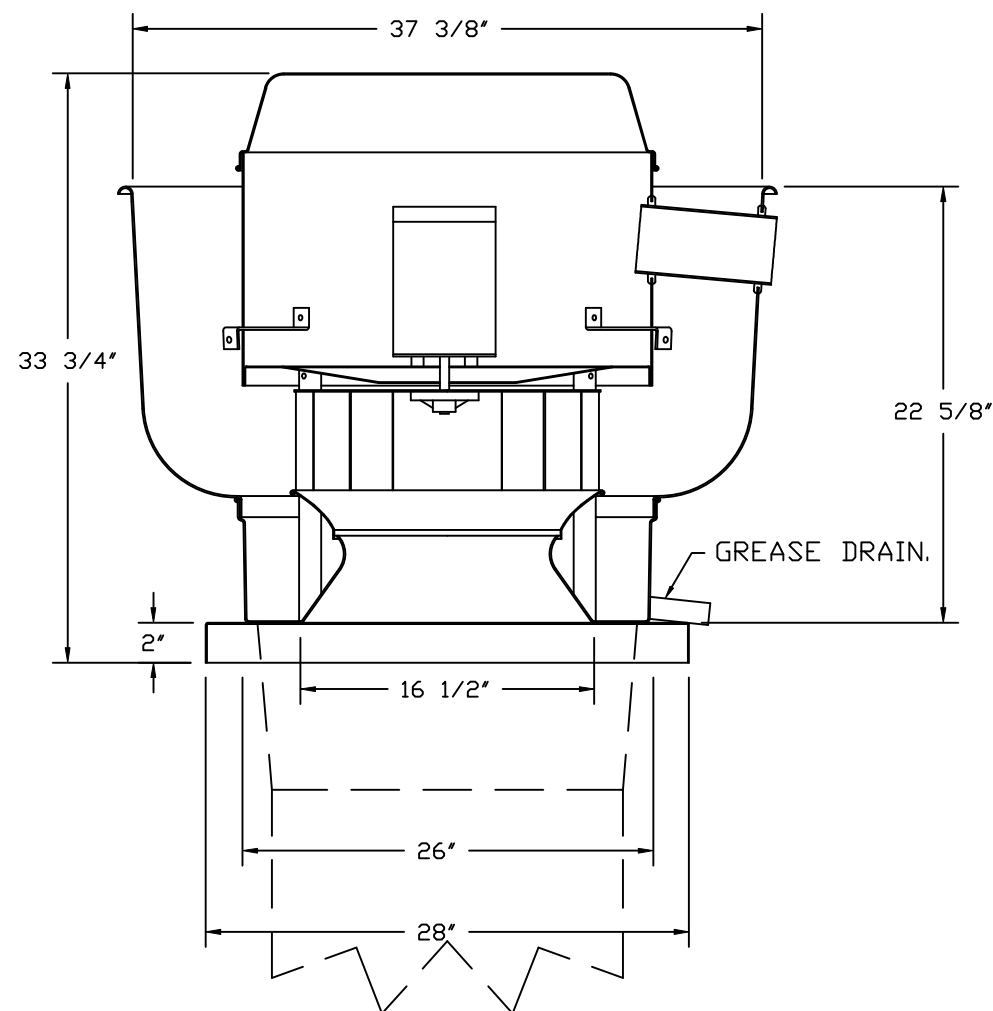
FAN ACCESSORIES

FAN UNIT NO	TAG	EXHAUST			SUPPLY			
		GREASE CUP	GRAVITY DAMPER	WALL MOUNT	SIDE DISCHARGE	GRAVITY DAMPER	MOTORIZED DAMPER	WALL MOUNT
1	KEF-1	YES						
2	KEF-2	YES						
3	KMUA-1							
4	KMUA-2							

CURB ASSEMBLIES

NO	ON FAN	TAG	WEIGHT	ITEM	SIZE
1	# 1	KEF-1	43 LBS	CURB	26.500"W X 26.500"L X 20.000"H VENTED HINGED.
2	# 2	KEF-2	43 LBS	CURB	26.500"W X 26.500"L X 20.000"H VENTED HINGED.
3	# 3	KMUA-1	29 LBS	CURB	21.000"W X 21.000"L X 14.000"H.
4	# 4	KMUA-2	29 LBS	CURB	21.000"W X 21.000"L X 14.000"H.

FANS #1 (KEF-1), #2 (KEF-2) - DU180HFA EXHAUST FAN



TOP VIEW

FEATURES:

- DIRECT DRIVE CONSTRUCTION (NO BELTS/PULLEYS).
- ROOF MOUNTED FANS.
- RESTAURANT MODEL.
- UL705 AND UL762 AND ULC-S645
- VARIABLE SPEED CONTROL.
- INTERNAL WIRING.
- THERMAL OVERLOAD PROTECTION (SINGLE PHASE).
- HIGH HEAT OPERATION 300°F (149°C).
- GREASE CLASSIFICATION TESTING.
- NEMA 3R SAFETY DISCONNECT SWITCH.

NORMAL TEMPERATURE TEST

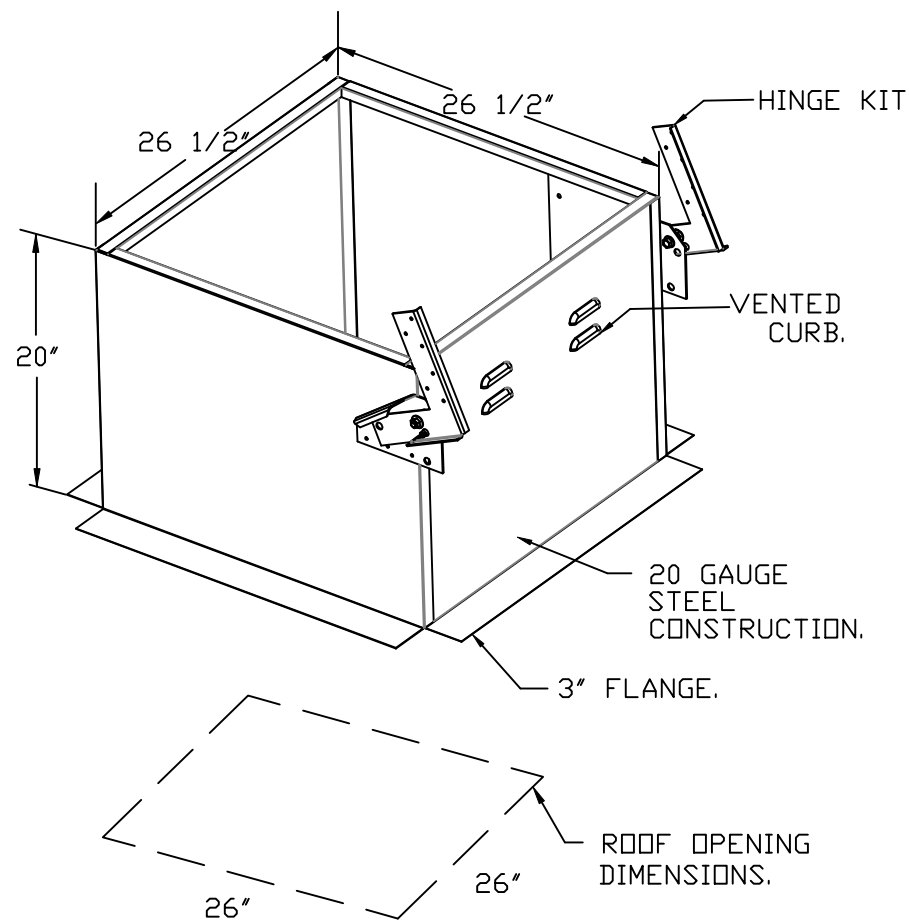
EXHAUST FAN MUST OPERATE CONTINUOUSLY WHILE EXHAUSTING AIR AT 300°F (149°C) UNTIL ALL FAN PARTS HAVE REACHED THERMAL EQUILIBRIUM, AND WITHOUT ANY DETERIORATING EFFECTS TO THE FAN WHICH WOULD CAUSE UNSAFE OPERATION.

ABNORMAL FLARE-UP TEST

- EXHAUST FAN MUST OPERATE CONTINUOUSLY WHILE EXHAUSTING BURNING GREASE VAPORS AT 600°F (316°C) FOR A PERIOD OF 15 MINUTES WITHOUT THE FAN BECOMING DAMAGED TO ANY EXTENT THAT COULD CAUSE AN UNSAFE CONDITION.

OPTIONS

- GREASE BOX.
- 2 YEAR PARTS WARRANTY.



Daddy D's BBQ - Angier
ANGIER, NC, 27501

DATE: 3/14/2025

DWG.#:
7404748

DRAWN BY: REG 36

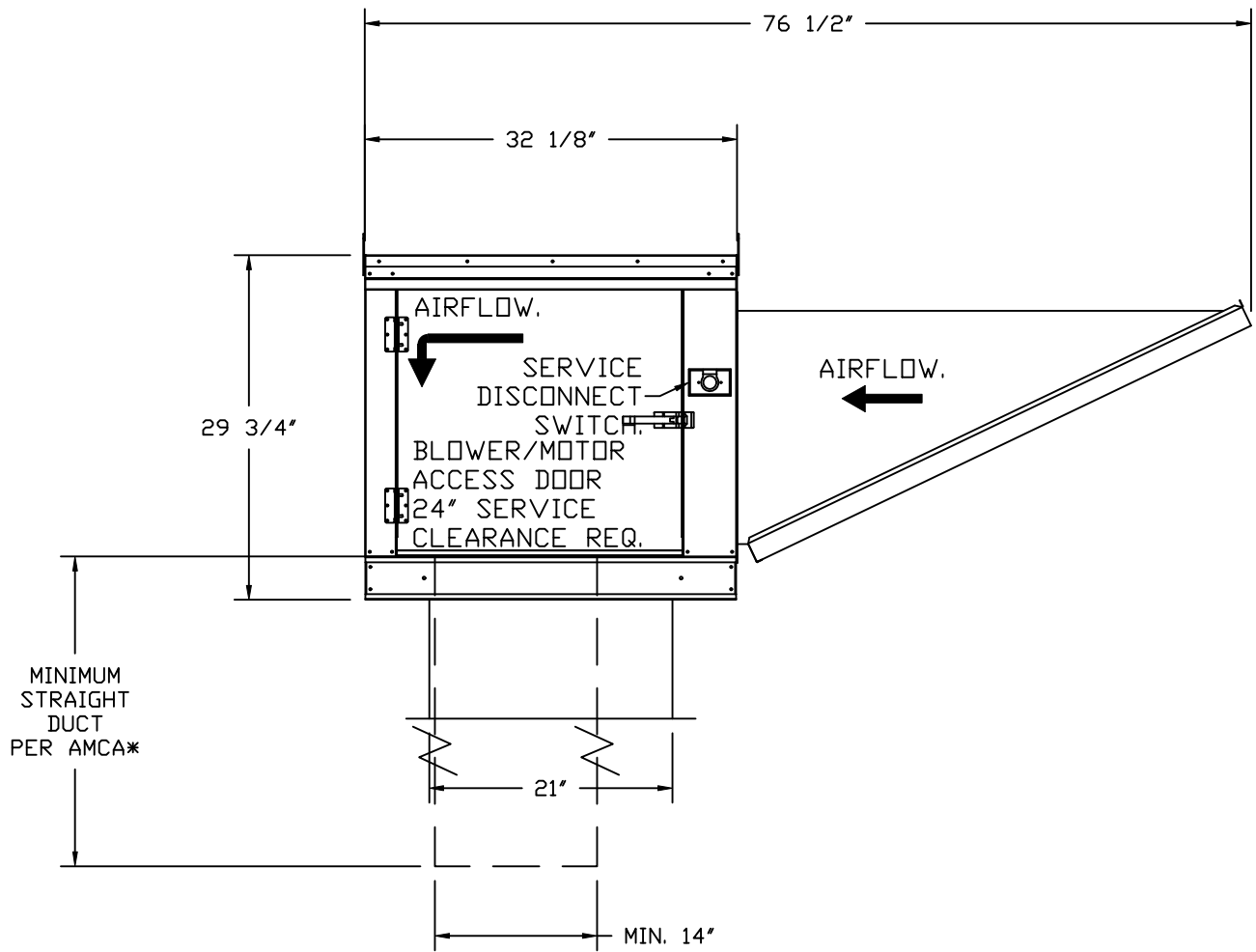
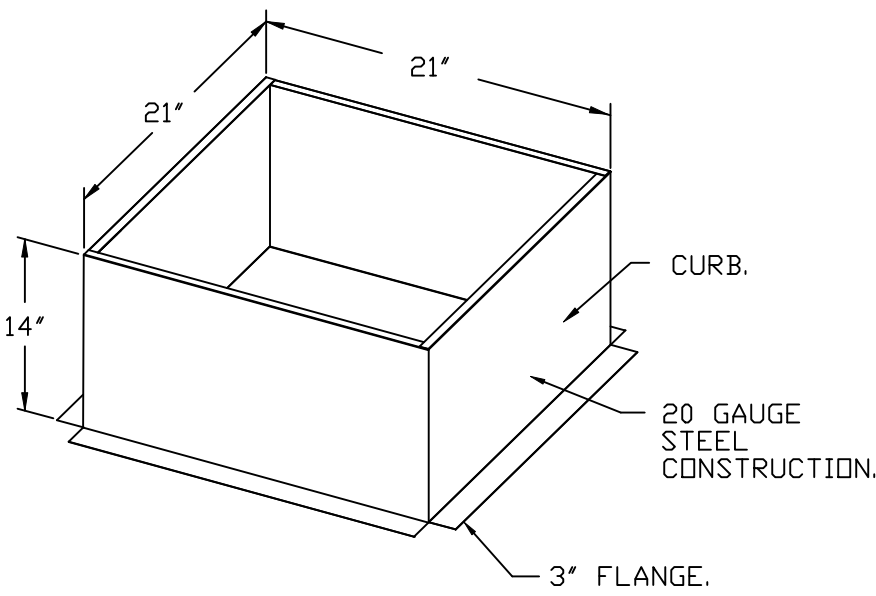
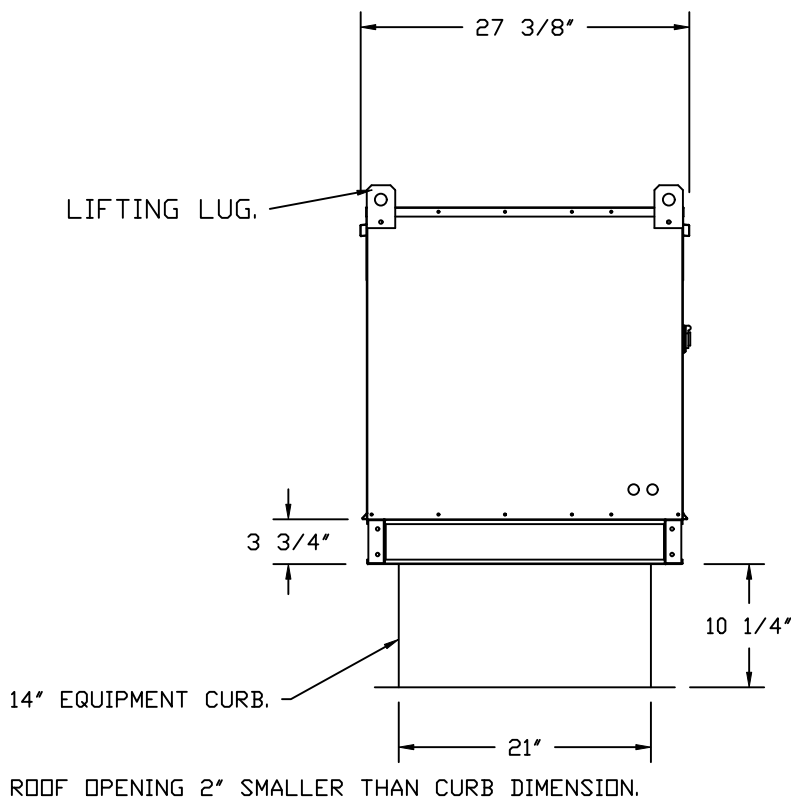
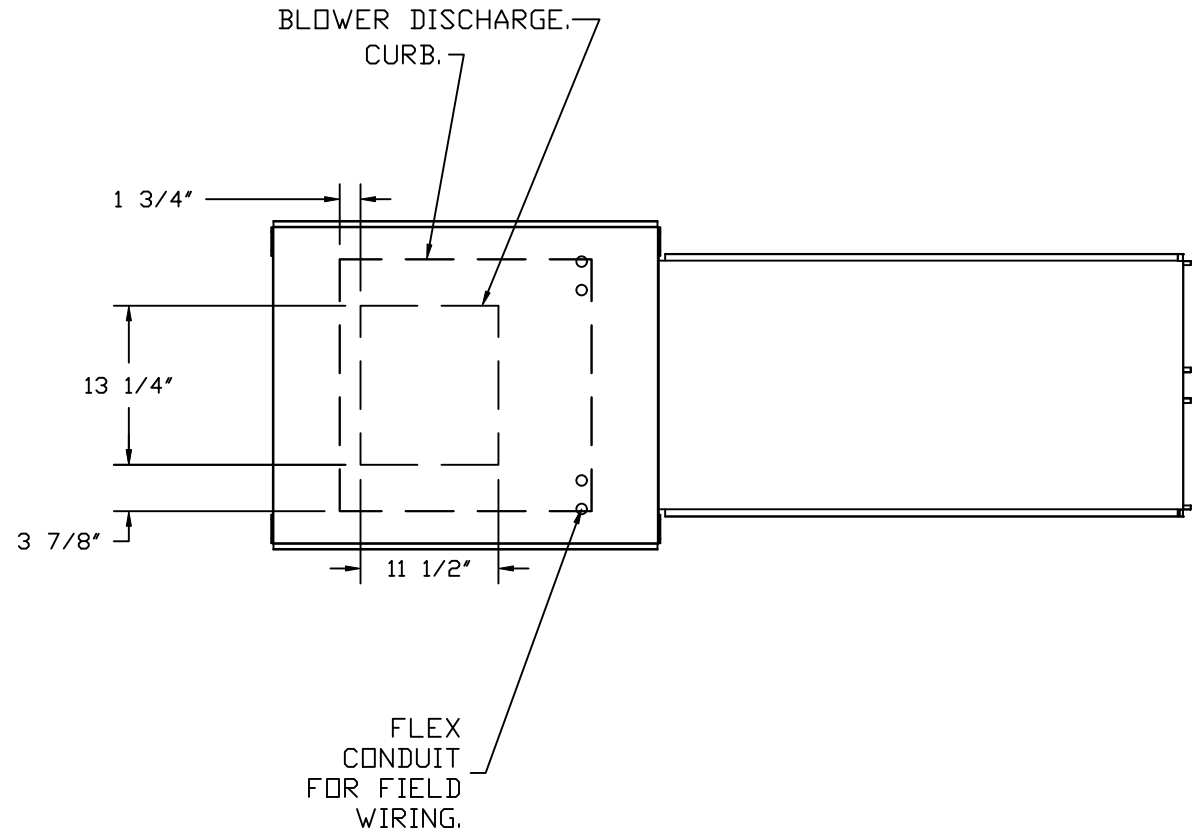
SCALE:
3/4" = 1'-0"

MASTER DRAWING

SHEET NO.

- FANS #3 (KMUA-1), #4 (KMUA-2) - A1-1SD SUPPLY FAN
1. UNTEMPERED SUPPLY UNIT WITH 15" MIXED FLOW DIRECT DRIVE FAN IN SIZE #1 HOUSING.
2. INTAKE HOOD WITH EZ FILTERS.
3. DOWN DISCHARGE - AIR FLOW RIGHT -> LEFT.
4. DOWN DISCHARGE CONSTRUCTION FOR SIZE 1 UNTEMPERED DIRECT DRIVE AHUS.
5. HINGED DOUBLE WALL INSULATED DOOR ASSEMBLY (BURNER/BLOWER SECTION).
6. 2 YEAR PARTS WARRANTY.

*NOTE: SUPPLY DUCT MUST BE INSTALLED TO MEET SMACNA STANDARDS. A MINIMUM STRAIGHT DUCT LENGTH MUST BE MAINTAINED DOWNSTREAM OF UNIT DISCHARGE AS OUTLINED IN AMCA PUBLICATION 201. WHEN USING RECTANGULAR DUCTWORK, ELBOWS MUST BE RADIUS THRODAT, RADIUS BACK WITH TURNING VANES. FLEXIBLE DUCTWORK AND SQUARE THRODAT/SQUARE BACK ELBOWS SHOULD NOT BE USED. ANY TRANSITION AND/OR TURNS IN THE DUCTWORK WILL CAUSE SYSTEM EFFECT. SYSTEM EFFECT WILL DRASTICALLY INCREASE STATIC PRESSURE AND REDUCE AIRFLOW. DO NOT RELY ON UNIT TO SUPPORT DUCT IN ANY WAY. FAILURE TO PROPERLY SIZE DUCTWORK MAY CAUSE SYSTEM EFFECTS AND REDUCE PERFORMANCE OF THE EQUIPMENT. SUGGESTED STRAIGHT DUCT SIZE IS 14" x 14".



REVISIONS

DESCRIPTION	DATE:
Δ	
Δ	
Δ	
Δ	

www.captiveaire.com

Eastern North Carolina

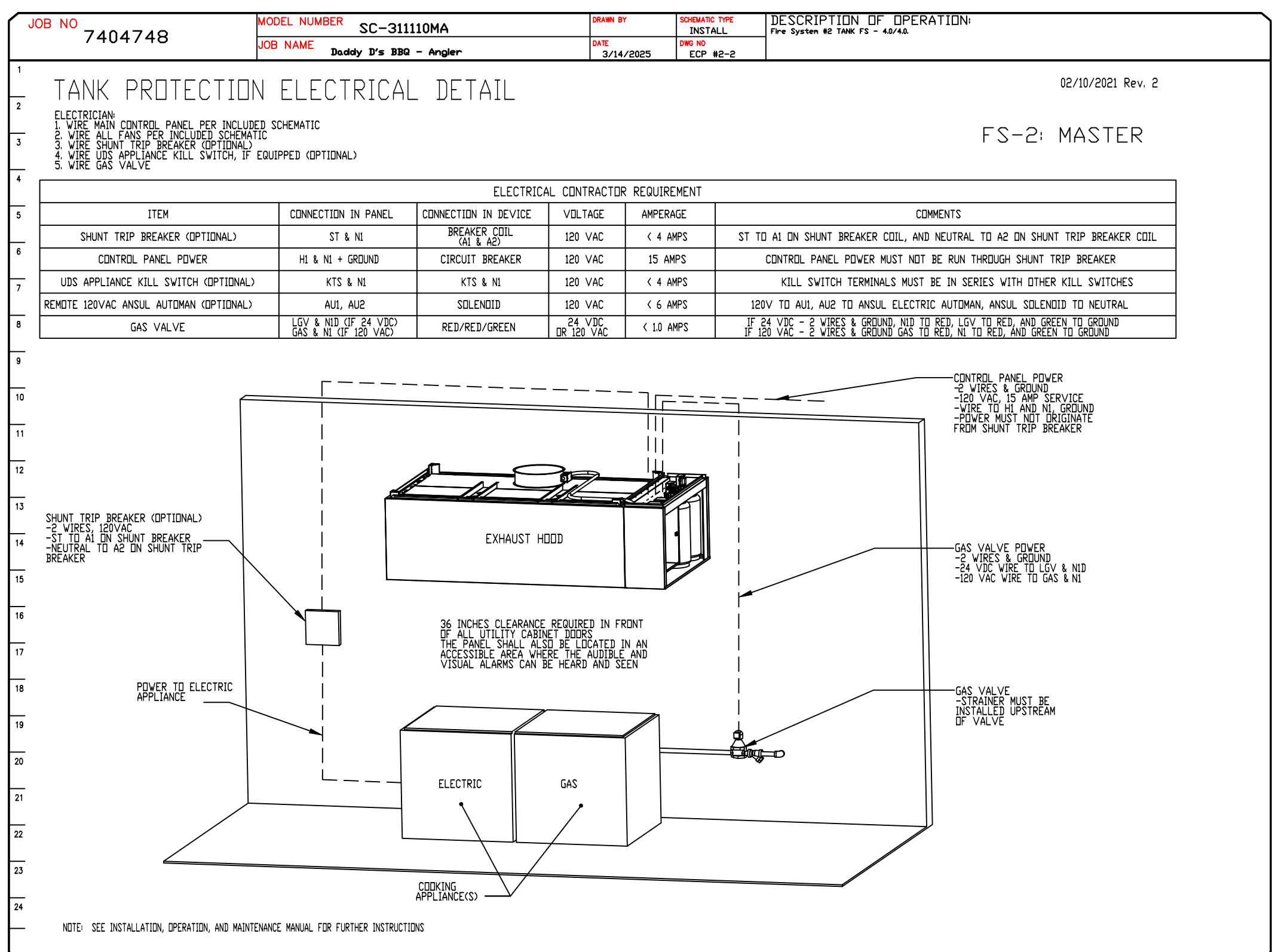
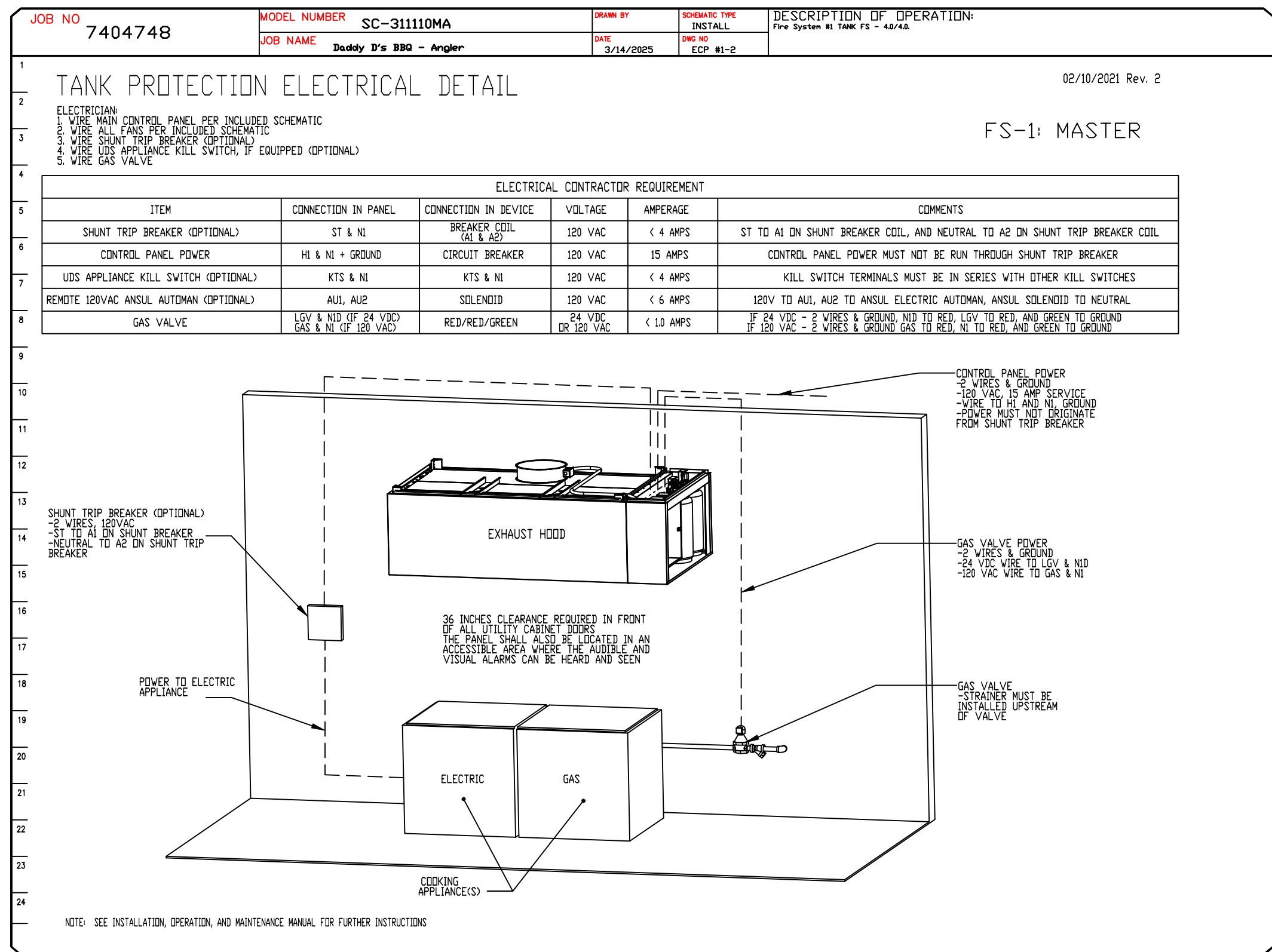
4641 Paragon Park Rd., Raleigh, NC, 27616 PHONE: (919) 825 - 3566 FAX: 9192275917 EMAIL: reg36@captiveaire.com

Daddy D's BBQ - Angier
ANGIER, NC, 27501

DATE: 3/14/2025
DWG.#: 7404748
DRAWN BY: REG 36
SCALE: 3/4" = 1'-0"
MASTER DRAWING


SHEET NO.
7

NO	TAG	PACKAGE #	LOCATION	SWITCHES		OPTION	FANS CONTROLLED					
				LOCATION	QUANTITY		FAN TAG	TYPE	#	HP	VOLTS	FLA
1		SC-311110MA	UTILITY CABINET RIGHT	UTILITY CABINET RIGHT	1 LIGHT	SMART CONTROLS THERMOSTATIC CONTROL W/ RELAY ON/OFF WITH SUPPLY	KEF-1	EXHAUST	3	2.000	208	6.1
				HOOD # 1	1 FAN		KMUA-1	SUPPLY	3	1.500	208	4.4
				UTILITY CABINET LEFT	1 LIGHT		SMART CONTROLS THERMOSTATIC CONTROL W/ RELAY ON/OFF WITH SUPPLY	KEF-2	EXHAUST	3	2.000	208
HOOD # 2	1 FAN	KMUA-2	SUPPLY	3	1.500	208		4.4				



REVISIONS	
DESCRIPTION	DATE:
△	
△	
△	
△	
△	

Daddy D's BBQ - Angier
ANGIER, NC, 27501



Eastern North Carolina
www.captiveaire.com

DATE: 3/14/2025

DWG.#: 7404748

DRAWN BY: REG 36

SCALE: 3/4" = 1'-0"

MASTER DRAWING

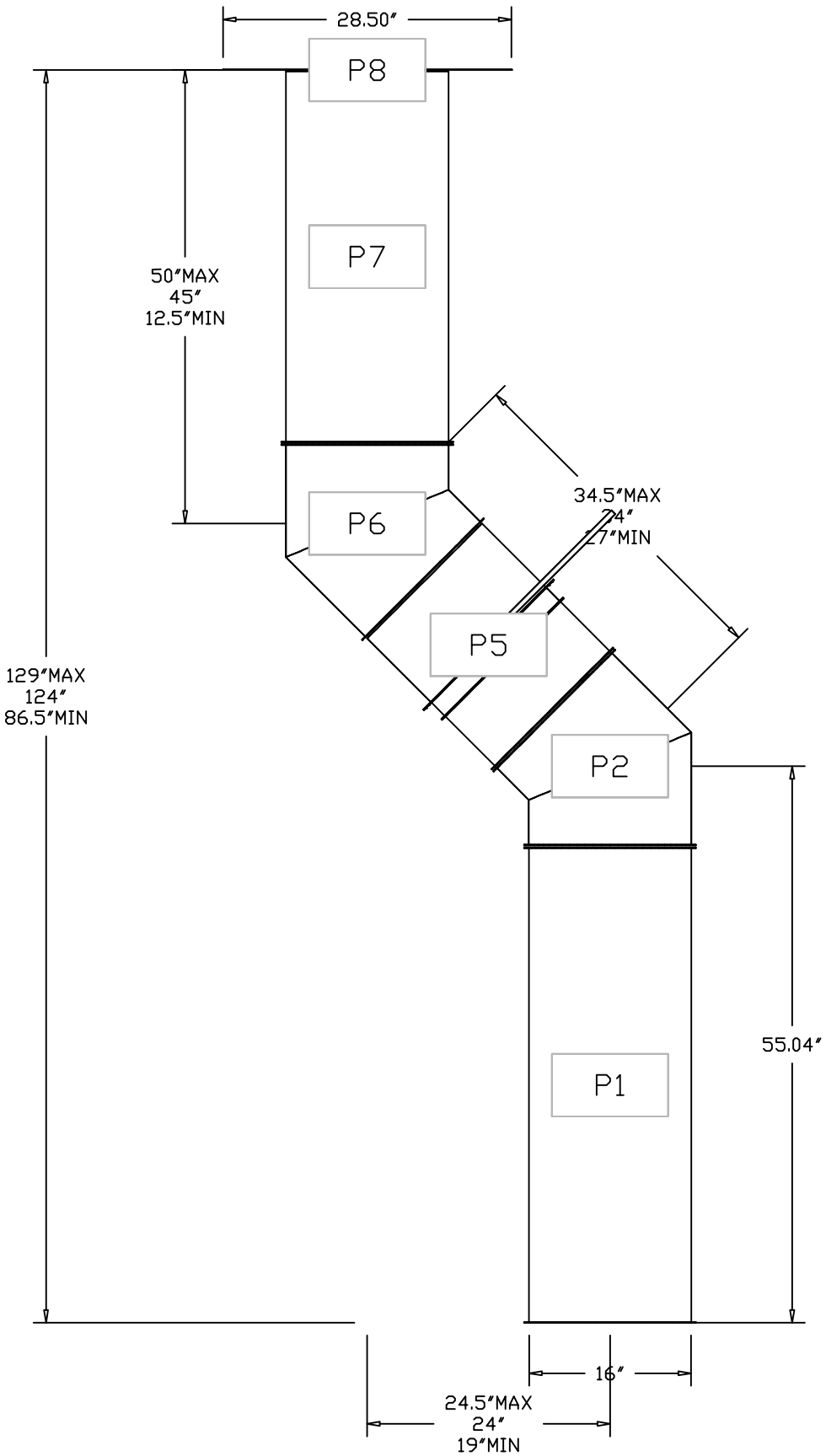
4641 Paracon Park Rd., Raleigh, NC. 27616 PHONE: (919) 825 - 3566 FAX: 9192275917 EMAIL: reg36@captiveaire.com

SHEET NO.

8

DUCTWORK #1 PARTS – JOB#7404748											
TAG	PART #	CFM	GPM	ZONE	COVEREDBY	SP	WEIGHT	VELOCITY	QTY	DESCRIPTION	
P1	DW1647LT	2400				-0.0181	24.89	1718.87	1	SINGLE WALL DUCT 16" DIAMETER, 47' LONG, FLANGE AT BOTH ENDS. STAINLESS STEEL.	
P2	DW1645ASY	2400				-0.0331	7.22	1718.87	1	SINGLE WALL DUCT 45 DEGREE ELBOW, 16" DUCT, ASSEMBLY.	
P3	DW1607LT	2400				-0.0027	4.14	1718.87	1	SINGLE WALL DUCT 16" DIAMETER, 7' LONG, FLANGE AT BOTH ENDS. STAINLESS STEEL.	
P4	DW1618AJDKIT	2400				-0.0042	13.19	1718.87	1	SINGLE WALL DUCT ADJUSTABLE, 16" DIAMETER, 17.5' LONG, FLANGE AT ONE END WITH A 16" ADJUSTABLE COLLAR – STAINLESS STEEL.	
P5	DW16SUBRASY						3.18		1	DUCT SUPPORT BRACKET KIT, 16" DUCT, USED FOR HANGING DUCT. 12 GA STEEL, CLEAR ZINC COATING. – 2 RINGS, 4 BRACKETS, & HARDWARE BAG 2.	
P6	DW1645ASY	2400				-0.069	7.22	1718.87	1	SINGLE WALL DUCT 45 DEGREE ELBOW, 16" DUCT, ASSEMBLY.	
P7 ASSEMBLED W/P8	DW1648AJDKIT	2400				-0.0141	30.39	1718.87	1	SINGLE WALL DUCT ADJUSTABLE, 16" DIAMETER, 47.5' LONG, FLANGE AT ONE END WITH A 16" ADJUSTABLE COLLAR – STAINLESS STEEL.	
P8 ASSEMBLED W/P7 D=B SYSTEM AT P8	DW2616TP	2400					11.62	1718.87	1	DUCT TO CURB TRANSITION, 26-1/2" CURB TO 16" DUCT, 16 GA ALUMINIZED. USED ON BDU18.	
	3M-2000PLUS						0.80		2	DUCT – 3M FIRE BARRIER 2000 PLUS SILICONE – USED AS SEALANT TO SEAL DUCT JOINTS.	
	DW16CLASY						1.18		6	DUCT *V* CLAMP WITH NEW DESIGN 14 GA BRACKETS, 16" DUCT, ASSEMBLY.	
TOTAL WEIGHT							110.53				

DUCTWORK #1 FRONT VIEW



REVISIONS

DESCRIPTION	DATE:
△	
△	
△	
△	



www.captiveair.com

Eastern North Carolina

4641 Paragon Park Rd., Raleigh, NC, 27616 PHONE: (919) 525 - 3568 FAX: 9192275917 EMAIL: reg36@captiveair.com

Daddy D's BBQ – Angier

ANGIER, NC, 27501

DATE: 3/14/2025

DWG. # 7404748

DRAWN BY: REG 36

SCALE: 3/4" = 1'-0"

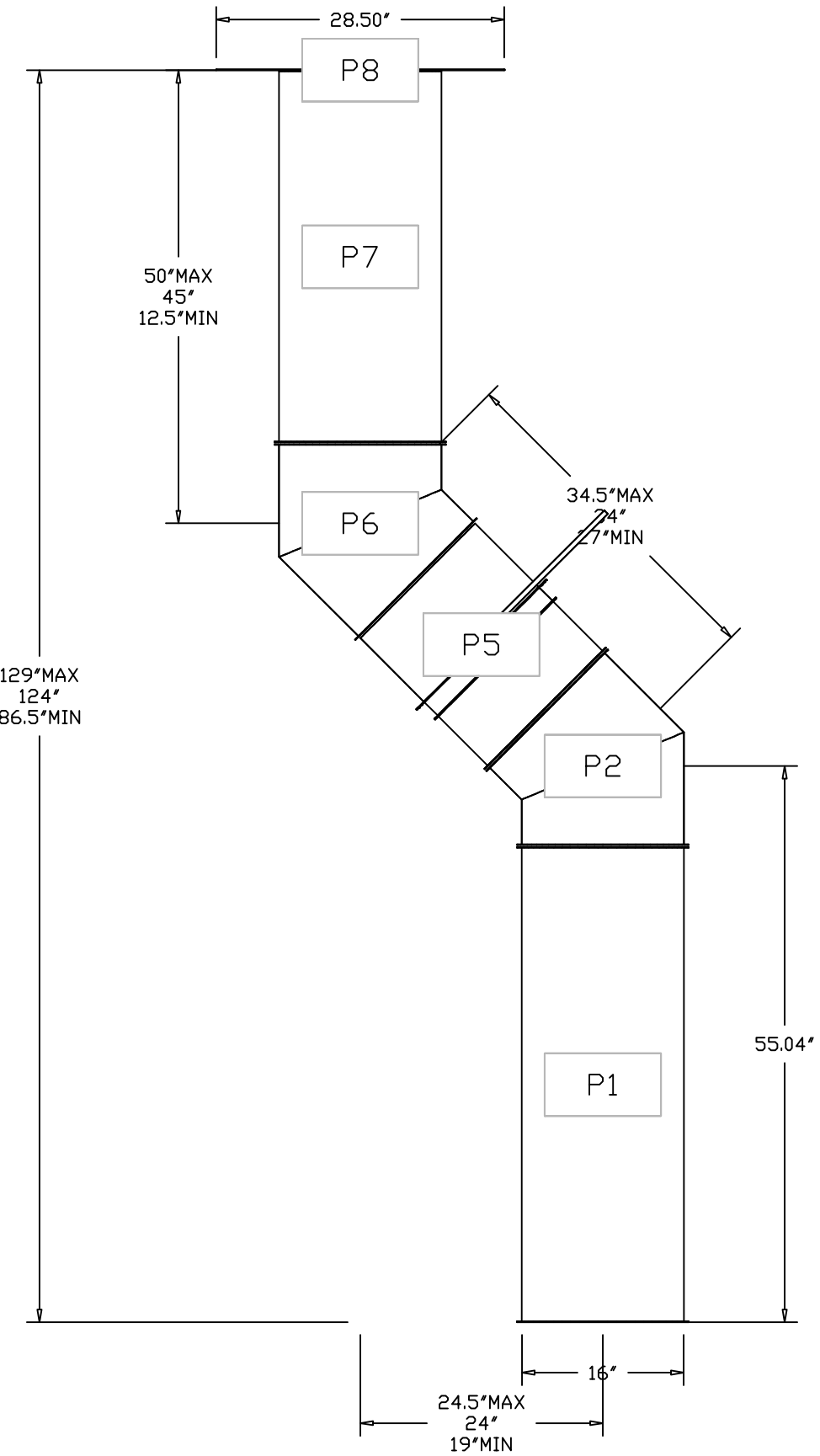
MASTER DRAWING

SHEET NO.

9

DUCTWORK #2 PARTS – JOB#7404748											
TAG	PART #	CFM	GPM	ZONE	COVEREDBY	SP	WEIGHT	VELOCITY	QTY	DESCRIPTION	
P1	DW1647LT	2400				-0.0181	24.89	1718.87	1	SINGLE WALL DUCT 16" DIAMETER, 47' LONG, FLANGE AT BOTH ENDS. STAINLESS STEEL.	
P2	DW1645ASY	2400				-0.0331	7.22	1718.87	1	SINGLE WALL DUCT 45 DEGREE ELBOW, 16" DUCT, ASSEMBLY.	
P3	DW1607LT	2400				-0.0027	4.14	1718.87	1	SINGLE WALL DUCT 16" DIAMETER, 7' LONG, FLANGE AT BOTH ENDS. STAINLESS STEEL.	
P4	DW1618AJDKIT	2400				-0.0042	13.19	1718.87	1	SINGLE WALL DUCT ADJUSTABLE, 16" DIAMETER, 17.5' LONG, FLANGE AT ONE END WITH A 16" ADJUSTABLE COLLAR – STAINLESS STEEL.	
P5	DW16SUBRASY						3.18		1	DUCT SUPPORT BRACKET KIT, 16" DUCT, USED FOR HANGING DUCT. 12 GA STEEL, CLEAR ZINC COATING. – 2 RINGS, 4 BRACKETS, & HARDWARE BAG 2.	
P6	DW1645ASY	2400				-0.069	7.22	1718.87	1	SINGLE WALL DUCT 45 DEGREE ELBOW, 16" DUCT, ASSEMBLY.	
P7 ASSEMBLED W/P8	DW1648AJDKIT	2400				-0.0141	30.39	1718.87	1	SINGLE WALL DUCT ADJUSTABLE, 16" DIAMETER, 47.5' LONG, FLANGE AT ONE END WITH A 16" ADJUSTABLE COLLAR – STAINLESS STEEL.	
P8 ASSEMBLED W/P7 D=B	DW2616TP	2400					11.62	1718.87	1	DUCT TO CURB TRANSITION, 26-1/2" CURB TO 16" DUCT, 16 GA ALUMINIZED. USED ON BDU18.	
SYSTEM AT P8						-1.2032	0.00				
	3M-2000PLUS						0.80		2	DUCT – 3M FIRE BARRIER 2000 PLUS SILICONE – USED AS SEALANT TO SEAL DUCT JOINTS.	
	DW16CLASY						1.18		6	DUCT *V* CLAMP WITH NEW DESIGN 14 GA BRACKETS, 16" DUCT, ASSEMBLY.	
TOTAL WEIGHT							110.53				

DUCTWORK #2 FRONT VIEW



REVISIONS

DESCRIPTION	DATE:
Δ	
Δ	
Δ	
Δ	

www.captiveair.com

Eastern North Carolina

4641 Paragon Park Rd., Raleigh, NC, 27616 PHONE: (919) 525 - 3568 FAX: 9192275917 EMAIL: reg36@captiveair.com

Daddy D's BBQ - Angier

ANGIER, NC, 27501

DATE: 3/14/2025

DWG. 7404748

DRAWN BY: REG 36

SCALE: 3/4" = 1'-0"

MASTER DRAWING

SHEET NO.

10