



**WARING**  
**COMMERCIAL**®



TORRINGTON, CT 06790

**LISTED**

PROFESSIONAL EXTRA BURNER 4H03

MODEL : WEB300

120V AC 60Hz 1300W

MADE IN CHINA 4717

FOR COMMERCIAL USE ONLY

UNPLUG BEFORE CLEANING

DO NOT IMMERSE IN WATER

*Waring*



44

4

Job # 2787985 - Hood # 1

**CLEANING AND MAINTENANCE OF STAINLESS STEEL HOODS**

- CAREFULLY WIPE AWAY GRITTY SUBSTANCES CLINGING TO S.S. SURFACES TO AVOID SCRATCHING.
- DILUTE 1/2 CUP OF LAUNDRY DETERGENT (E.G. TIDE SURF) WITH 1 GAL. WARM WATER.
- SOAK A CLOTH IN THE WATER DETERGENT SOLUTION. WRING OUT EXCESS.
- RUB WITH THE CLOTH IN THE DIRECTION OF THE GRAIN.
- WIPE S.S. WITH CLOTH SOAKED IN WARM WATER TO REMOVE ALL TRACES OF THE CLEANSING AGENT.
- WIPE S.S. DRY WITH A CLEAN CLOTH.
- REAPPLY S.S. POLISH (E.G. SHELLIA SHINE).
- FILTERS SHOULD BE CLEANED IN A DISHWASHER OR SOAK SINK DAILY.

DO NOT USE IRON WOOL OR SPATULAS

DO NOT USE THE FOLL AROUND THE F

- CHLORINE SUBSTANC
- ACIDS (E.G. SULFURIC)
- CHLORIDE (E.G. MERC FERRIC CH

VAP SUE COR

Head Clearance to Combustibles:  
- FRONT - 0 in.  
- BACK - 18 inches to combustibles or 3 inches to limited combustibles  
- LEFT - 18 inches to combustibles or 3 inches to limited combustibles  
- TOP - 18 inches to combustibles or 3 inches to limited combustibles.  
Hoods with integral 2 inch standoffs may be installed directly against limited combustible surfaces.

Any insulated surface on the hood can be in contact with a combustible wall or structure.

Head surfaces perpendicular to combustible walls or structures do not need to be insulated to maintain the zero inch clearance rating.

Only the surface of the hood against a combustible wall or structure must be insulated. For example, on a combustible back wall, only the back of the hood needs to be insulated, even if the back wall extends beyond the back of the hood in any direction.

Head Clearance to Combustibles:  
- FRONT - 0 in.  
- BACK - 18 inches to combustibles or 3 inches to limited combustibles  
- LEFT - 18 inches to combustibles or 3 inches to limited combustibles  
- TOP - 18 inches to combustibles or 3 inches to limited combustibles.  
Hoods with integral 2 inch standoffs may be installed directly against limited combustible surfaces.

Any insulated surface on the hood can be in contact with a combustible wall or structure.

Head surfaces perpendicular to combustible walls or structures do not need to be insulated to maintain the zero inch clearance rating.

Only the surface of the hood against a combustible wall or structure must be insulated. For example, on a combustible back wall, only the back of the hood needs to be insulated, even if the back wall extends beyond the back of the hood in any direction.

Head Clearance to Combustibles:  
- FRONT - 0 in.  
- BACK - 18 inches to combustibles or 3 inches to limited combustibles  
- LEFT - 18 inches to combustibles or 3 inches to limited combustibles  
- TOP - 18 inches to combustibles or 3 inches to limited combustibles.  
Hoods with integral 2 inch standoffs may be installed directly against limited combustible surfaces.

Any insulated surface on the hood can be in contact with a combustible wall or structure.

Head surfaces perpendicular to combustible walls or structures do not need to be insulated to maintain the zero inch clearance rating.

Only the surface of the hood against a combustible wall or structure must be insulated. For example, on a combustible back wall, only the back of the hood needs to be insulated, even if the back wall extends beyond the back of the hood in any direction.



Food warmer

HENNY PENNY®

MODEL HMR-105 SERIAL NO. HA1806022

PRODUCT NO. HMR105.0



EATON, OHIO 45320  
MADE IN USA  
www.hennypenny.com

120/208	VOLTS	60	Hz.	1	PHASE
26.9	AMPS	5592	WATTS	3+G	WIRE

56371

IT IS COVERED BY ONE OR MORE OF THE FOLLOWING U.S. AND

fridge

# TRUE<sup>®</sup>

True Manufacturing Co., Inc.  
True Refrigeration<sup>®</sup>  
O'Fallon, MO 63366

MADE IN THE USA

CABINET  
SERIAL  
NUMBER:

## 8819982



8819982

MODEL: **T-23-HC**

<b>115</b>	<b>V</b>	HP COMPRESSOR M/N: <b>1/5 EMI70UER</b>
<b>60</b>	<b>Hz</b>	REFRIGERANT: <b>R290</b> <b>2.8</b> oz. (g)
<b>1</b>	<b>PH</b>	DESIGN PRESSURES - PSIG (N/cm <sup>2</sup> ) HIGH SIDE <b>320</b> LOW SIDE <b>148</b>
<b>2.8</b>	<b>A</b>	

### BBG

BLOWING AGENT: R611

U.S. PATENT NUMBERS:

THIS UNIT LISTED UNDER  
N.S.F. NO. 7



Energy  
Verified



COMMERCIAL  
REFRIGERATOR  
AND FREEZER  
ALSO ENERGY  
VERIFIED  
ASHRAE  
70-2000 31113

LISTED  
COMMERCIAL  
REFRIGERATOR  
3046

B

DO NOT CLEAN LABEL WITH SOLVENT  
DRL



freezer

**SERV-WARE**

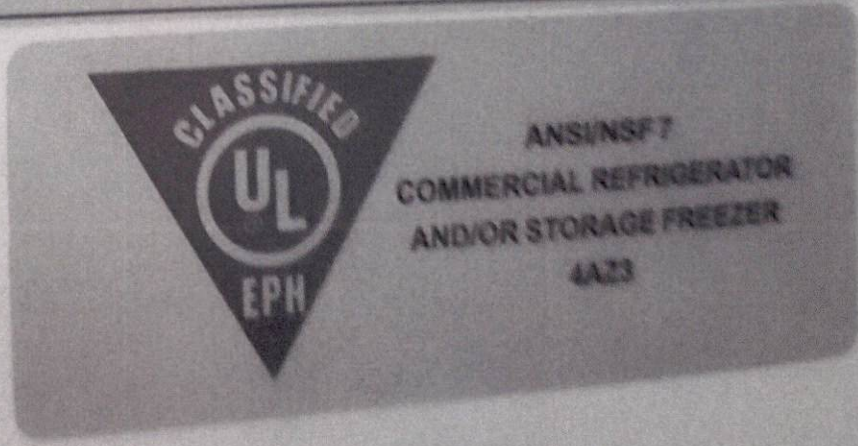


**COMMERCIAL FREEZER**

MODEL NO. **RF-2**  
BATCH NO. SERIAL NO.  
155240 5052686  
REFRIGERANT: R404A 25.0 oz.

DESIGN PRESSURES  
HIGH SIDE: 430 PSIG  
LOW SIDE: 220 PSIG  
ELECTRIC RATING  
12 AMPS 115V 60Hz

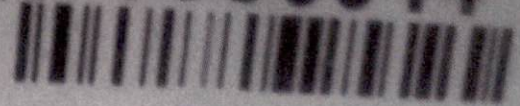
SERV-WARE PRODUCTS  
[www.Serv-Ware.com](http://www.Serv-Ware.com) 800.768.5953  
MADE IN CHINA



fridge

**TWUE**  
Manufacturing Co.  
O'FALLON, MO 63366

CABINET SERIAL NUMBER: **1-3306044**



3306044

MODEL: **TWT-60**  
DESIGN PRESSURES - PSIG

REFRIGERATION UNIT **AE4440Y**  
HIGH SIDE **312** - LOW SIDE **140**

HP	VOLTAGE	HZ	PH	F.L. AMPS
<b>1/3</b>	<b>115</b>	<b>60</b>	<b>1</b>	<b>7.8</b>

CHARGE REFRIGERANT **R134A**  
**9** OZ  
**CAC**

THIS UNIT LISTED UNDER N.S.F. NO. 7

U.S. PATENT NUMBERS:  
5,563,354 / 5,453,082 / 5,182,923  
5,182,523 / 5,076,443 / 4,955,486  
4,890,746 / 4,875,745 / 4,127,968  
D273,298 / D271,107 / 5,594,847  
2,045,732

DO NOT CLEAN LABEL WITH SOLVENT  
**DRL**



INTENDED FOR USE IN ROOMS  
WITH AN AMBIANT TEMPERATURE  
OF 80°F(30°C) OR LESS



Food warmer

**HENNY PENNY®**

CLASSIFIED  
UL  
EPH  
ANSI/NF 4

EATON, OHIO 45320  
MADE IN USA  
www.hennypenny.com

601M  
UL  
C US  
LISTED  
COOKING  
APPLIANCE

MODEL	HMR-105	SERIAL NO.	HA1806022
PRODUCT NO.	HMR105.0		
120/208 VOLTS	60 Hz.	1 PHASE	
26.9 AMPS	5592 WATTS	3+G WIRE	

56371

THIS PRODUCT IS COVERED BY ONE OR MORE OF THE FOLLOWING U.S. AND FOREIGN PATENTS OR REGISTRATIONS:  
US 6,259,065 B1; US 6,627,855 B2; CN ZL00809427.6; and other Patents Pending.

24171

**WARNING**  
**SHOCK HAZARD**  
TO AVOID ELECTRICAL SHOCK, DISCONNECT POWER BEFORE...

ACCEPTED FOR USE  
CITY OF NEW YORK  
DEPARTMENT OF BUILDINGS  
MEA 315

H0091



### CAPTIVEAIRE SYSTEMS

360 Northbrook Drive  
Youngsville, NC 27596  
(866) 784 6900

Job # 2767085

Hood # 1  
Length 6' 0"

Intertek Intertek  
2001472

Exhaust Hoods for Commercial Cooking Equipment  
Conforms to UL Standard 710, UL Sub C710 and NSF/ANSI Standard 2  
Certified to CANULC Standard S646  
Built to NFPA 96 standards  
Suitable for use with up to extra heavy duty cooking appliances.

MODEL #: 5424 ND-2

Exhaust Hood without exhaust damper

Max. Clearance from Cooking Surface to Front Lower Edge of hood	Min. Exhaust Air Flow (CFM) Linear Foot	Max. Supply Air Flow (CFM) Linear Foot	Min. Overhang from cooking Surface (Front)	Min. Overhang from cooking Surface (Side)	Max. Cooking Surface Temperature
48.0"	150 CFM	--	6.0"	6.0"	450° F
48.0"	200 CFM	--	6.0"	6.0"	600° F
48.0"	250 CFM	--	6.0"	6.0"	700° F

Hood may be applied in Type 1 (Grease) or Type 2 (Non Grease) application

USE COPPER WIRE

SCCR: 5 kAmp

Lighting Circuit: 120 VAC, 60 Hz, 1 Phase, MCA: 15 Amps, MOCP: 15 Amps

Penetrating  
Appliance  
Appliance  
Max cook

Replace

- X
- X
- X
- X

Filters S

4 - 20" T

Filter Ty



Panini Press

**Winco**



Intertek

**ELECTRICAL GRILL**  
**MODEL No: EPG-1**

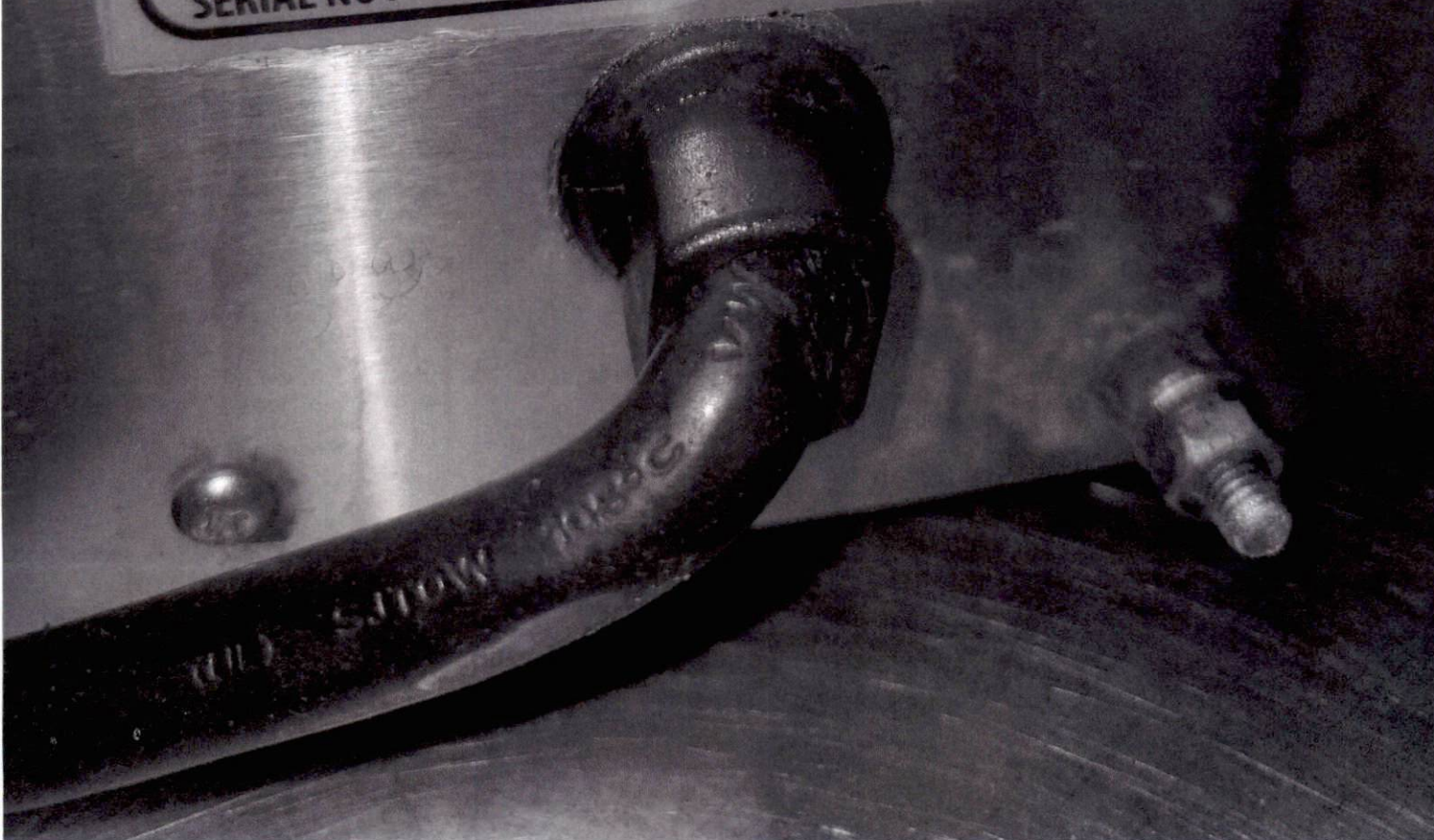
CONFORMS TO UL STD.197  
CERTIFIED TO CSA STD.C22.2 No.109

AMPS: 15  
VOLTAGE: 120V AC

FREQUENCY: 50/60Hz  
WATTAGE: 1.75kW

WINCO/DWL INDUSTRIES CO. • 65 INDUSTRIAL ROAD, LODI NJ 07644  
SERVICE HOT LINE : 1-888-946-2682

SERIAL NO: EPG-1\* 1400600



Fryer



# IMPERIAL

Commercial Cooking Equipment

1128 SHERBORN ST., CORONA, CA, 92875



MODEL

**IFS-50**

SERIAL

**06136806**

TYPE OF GAS

**LPG**

BTU/HR

**140,000**

MAN. PRES.

**11.0**

INS. W.G.

INTENDED FOR OTHER THAN HOUSEHOLD USE.  
SUITABLE FOR INSTALLATION ON COMBUSTIBLE FLOORS USING 6 IN ADJ. LEG OR CASTER.  
ANSI Z83.11a CGA 1.8a-1997, FOOD SERVICE EQUIPMENT

### LIGHTING INSTRUCTIONS

1. SET THE THERMOSTAT DIAL AND GAS COCK DIAL TO THE OFF POSITION.
2. WAIT FOR FIVE MINUTES.
3. TURN GAS COCK DIAL TO "PILOT" POSITION.
4. DEPRESS THE GAS COCK DIAL AND APPLY A LIGHTED MATCH OR TAPER TO THE PILOT.
5. HOLD THE GAS COCK DIAL DEPRESSED FOR ABOUT 30 SECOND OR UNTIL THE PILOT STAYS LIT BEFORE RELEASING.
6. IF THE PILOT DOES NOT STAY LIT, REPEAT STEPS 4 AND 5.
7. FOR COMPLETE SHUT DOWN, TURN THERMOSTAT DIAL AND GAS COCK DIAL TO "OFF" POSITION.

### WARNING

DO NOT OPERATE THE FRYER WITHOUT A TIPPING RESTRAINT IN PLACE.  
DO NOT ATTEMPT TO MOVE THE FRYER WITH OIL/SHORTENING, ESPECIALLY WHEN HOT IT COULD SPILL/SPLASH AND CAUSE SEVERE BURNS. DRAIN THE FRYER BEFORE MOVING.

### CAUTION

DO NOT MELT SOLID FAT IN FRYER UNLESS THE FAT IS PACKED FIRMLY BELOW, BETWEEN AND ABOVE THE HEAT TUBES.  
DO NOT OPERATE THE FRYER IF THE OIL IS NOT UP TO THE OIL LEVEL MARK IN THE VESSEL.  
FAILURE TO COMPLY MAY DAMAGE THE VESSEL AND VOID THE WARRANTY.

P.N. 1038



# ELECTRIC STORAGE TANK WATER HEATER



LISTED  
932N

MODEL NUMBER

SERIAL NUMBER

ITEM ID / PART NUMBER

**E6-40R45DV 110**

**2215129142516**

**100341521**

VOLTS AC

PHASE

WATTS  
UPPER

WATTS  
LOWER

TOTAL WATTS  
CONNECTED

NOMINAL  
CAPACITY  
US GAL

MAX WORKING  
PRESSURE

**240**

**1**

**4500**

**4500**

**4500**

**40**

**150**

VOLTS AC

ALTERNATE RATINGS  
WATTS  
UPPER

WATTS  
LOWER

TOTAL WATTS  
CONNECTED

CIRCUIT

**208**

**3380**

**3380**

**3380**

**A6**

A. O. SMITH CORPORATION  
HIGHWAY 1  
MCBEE, SC



Model Number **E6-40R45DV 110**

1700



Serial Number **2215129142516**

**HENNY PENNY®**



EATON, OHIO 45320  
MADE IN USA  
www.hennypenny.com



MODEL **HMR-105**

SERIAL NO. **HA1806022**

PRODUCT NO. **HMR105.0**

**120/208** VOLTS

**60** Hz.

**1** PHASE

**26.9** AMPS

**5592** WATTS

**3+G** WIRE

56371

THIS PRODUCT IS COVERED BY ONE OR MORE OF THE FOLLOWING U.S. AND FOREIGN PATENTS OR REGISTRATIONS:

US 6,259,065 B1; US 6,627,855 B2; CN ZL00809427.6; and other Patents Pending.

24171



**WARNING**  
**SHOCK HAZARD**

TO AVOID ELECTRICAL SHOCK, DISCONNECT POWER BEFORE...

ACCEPTED FOR USE  
CITY OF NEW YORK  
DEPARTMENT OF BUILDINGS  
MEA 315

# TWU

Manufacturing Co.  
O'FALLON, MO 63366

CABINET  
SERIAL  
NUMBER:

## 1-3306044



3306044

MODEL: TWT-60

REFRIGERATION UNIT AE4440Y

DESIGN PRESSURES - PSIG

HIGH SIDE 312 - LOW SIDE 140

HP	VOLTAGE	HZ	PH	F.L. AMPS
1/3	115	60	1	7.8

CHARGE  
REFRIGERANT R134A  
9 OZ

### CAC

THIS UNIT LISTED UNDER N.S.F. NO. 7

U.S. PATENT NUMBERS:

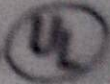
5,553,354 / 5,453,082 / 5,182,923  
5,182,524 / 5,076,443 / 4,955,486  
4,890,746 / 4,875,745 / 4,127,968  
D273,298 / D271,107 / 5,594,547  
2,045,722

DO NOT CLEAN LABEL WITH SOLVENT  
DRL

ENERGY  
SAVING



UNITED STATES PATENT AND TRADEMARK OFFICE



INTENDED FOR USE IN ROOMS  
WITH AN AMBIANT TEMPERATURE  
OF 80°F (30°C) OR LESS

