

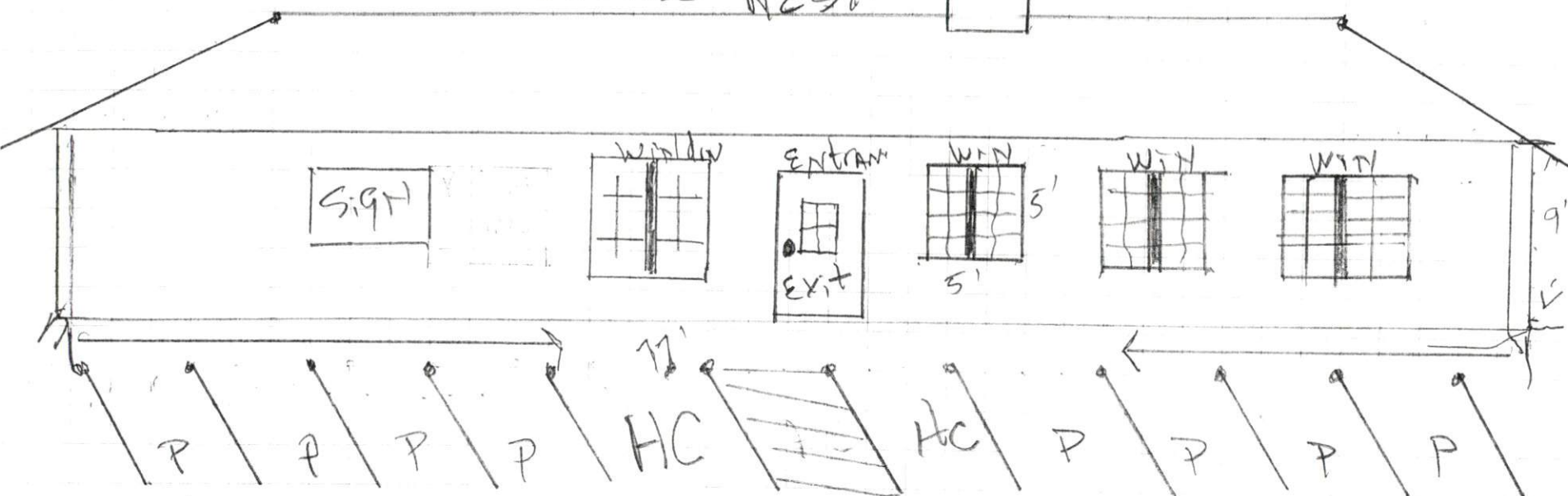
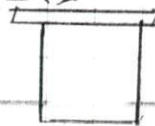
□ <sup>h</sup> OR <sup>w</sup> 1/2" = 2'

# KICKING<sup>w</sup> Camel

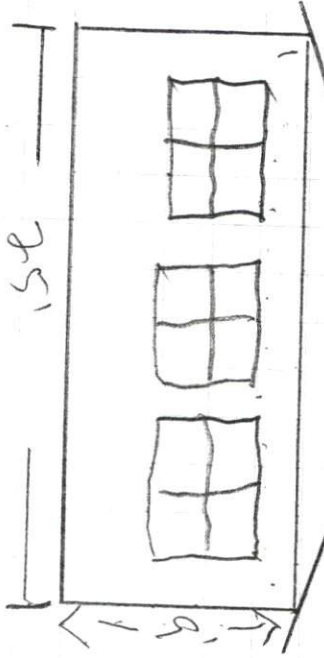
OUTSIDE WEST

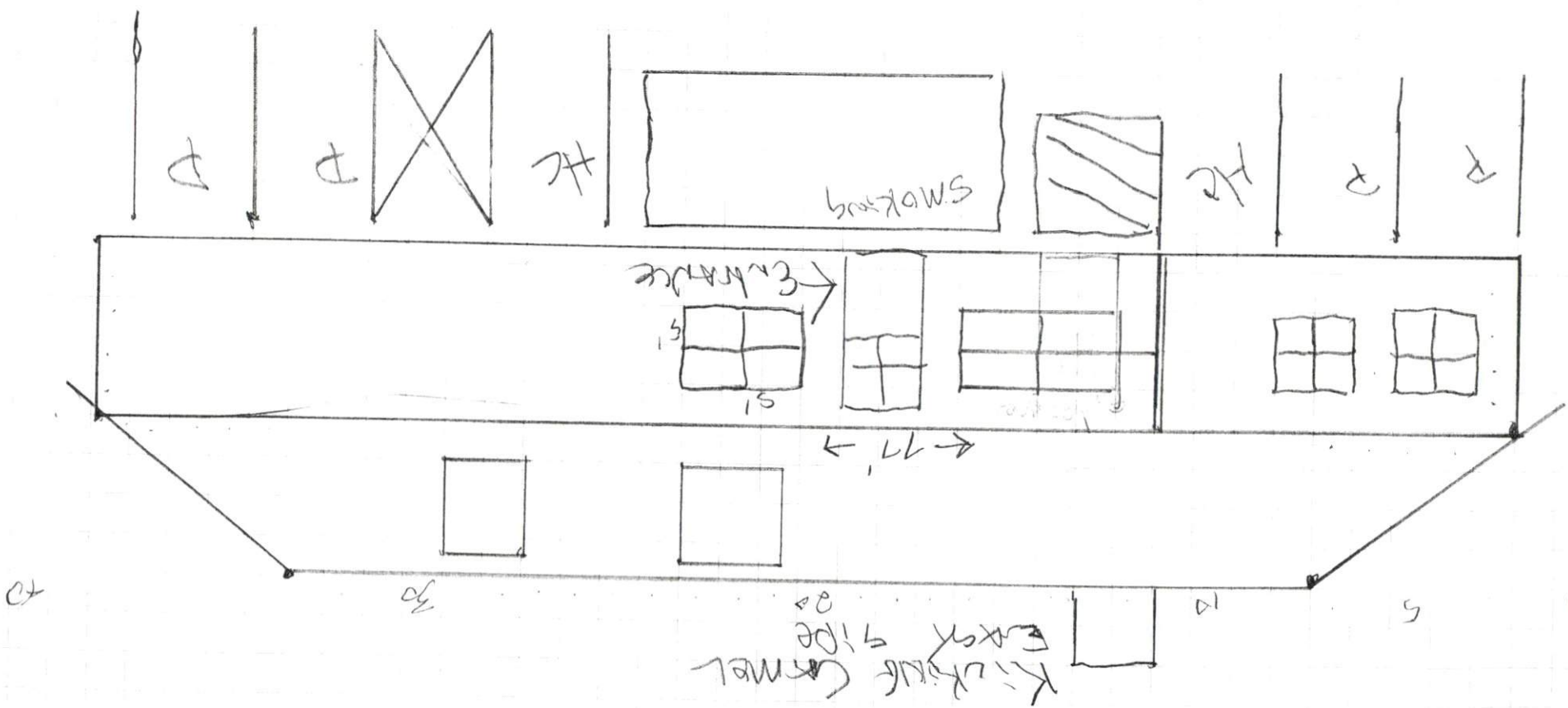
30

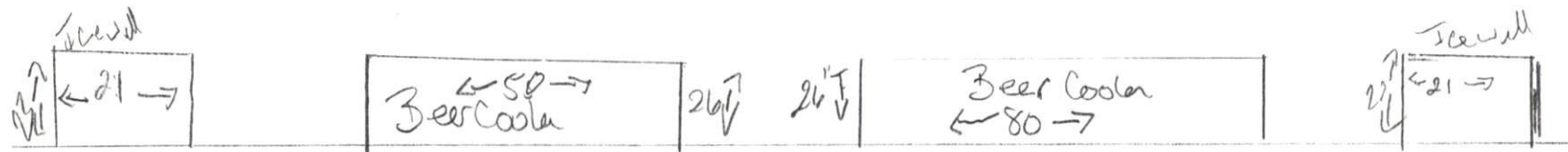
40



Kachha Camel  
FRONT







1. Beer Cooler 50" → True TD-50-18

6. Hand Sink - Regency - 600 HS 12

2. Beer Cooler 80" → True TD-80-18

3. Pepsi Tower - 2323 Prop IN

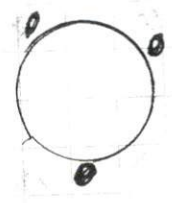
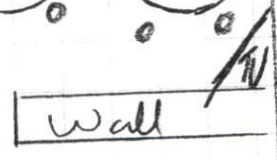
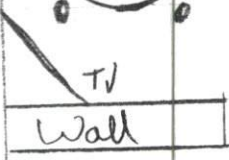
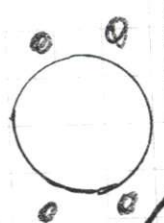
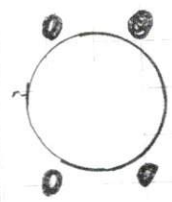
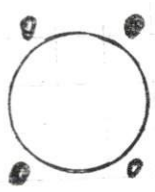
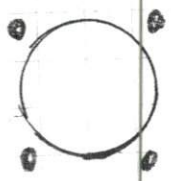
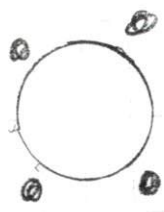
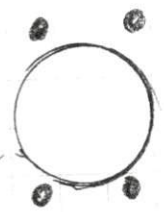
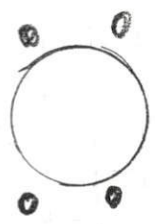
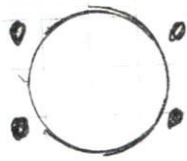
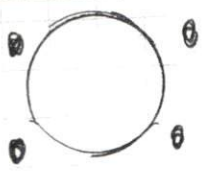
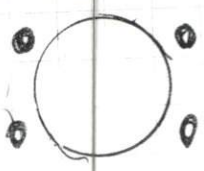
4. Ice wall - FTM 1522

5. Draft Beer - GLC 381

Street side

TV

TV

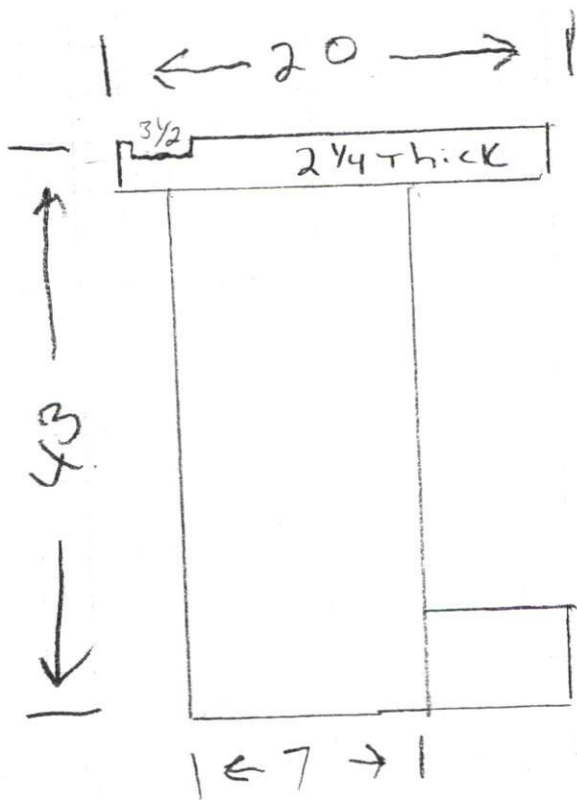


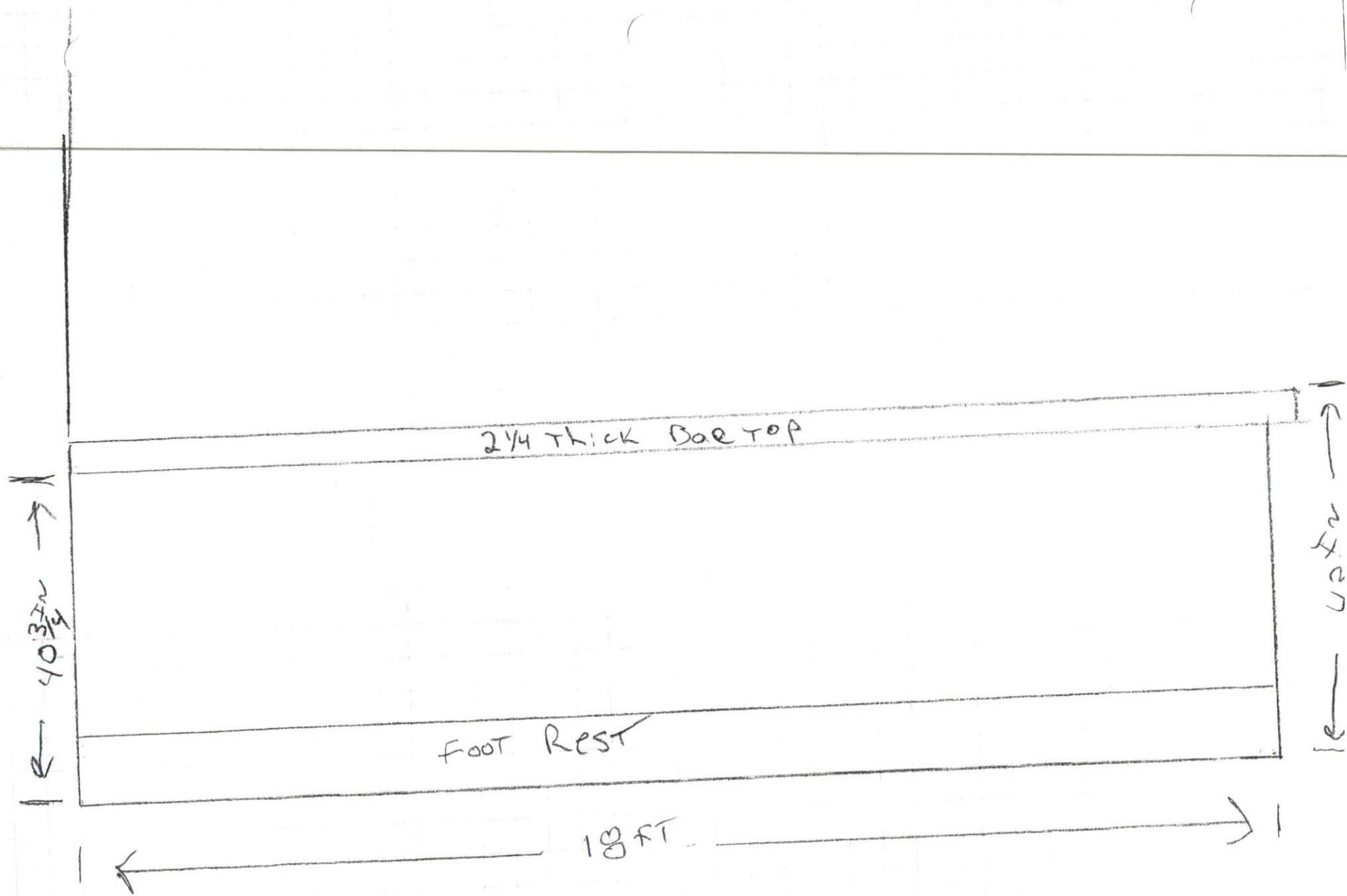
TV

TV

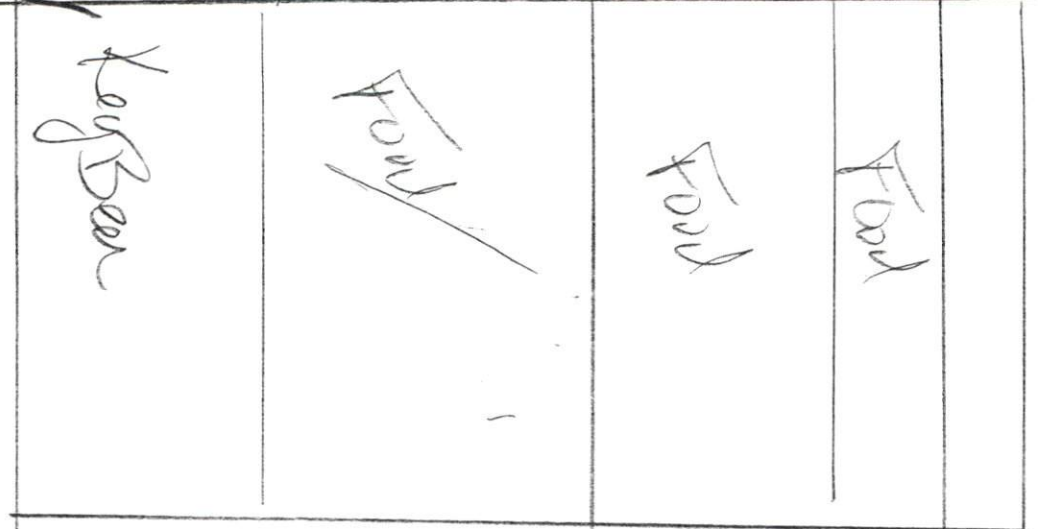
Bar side

Dining Room, Kicking Camel

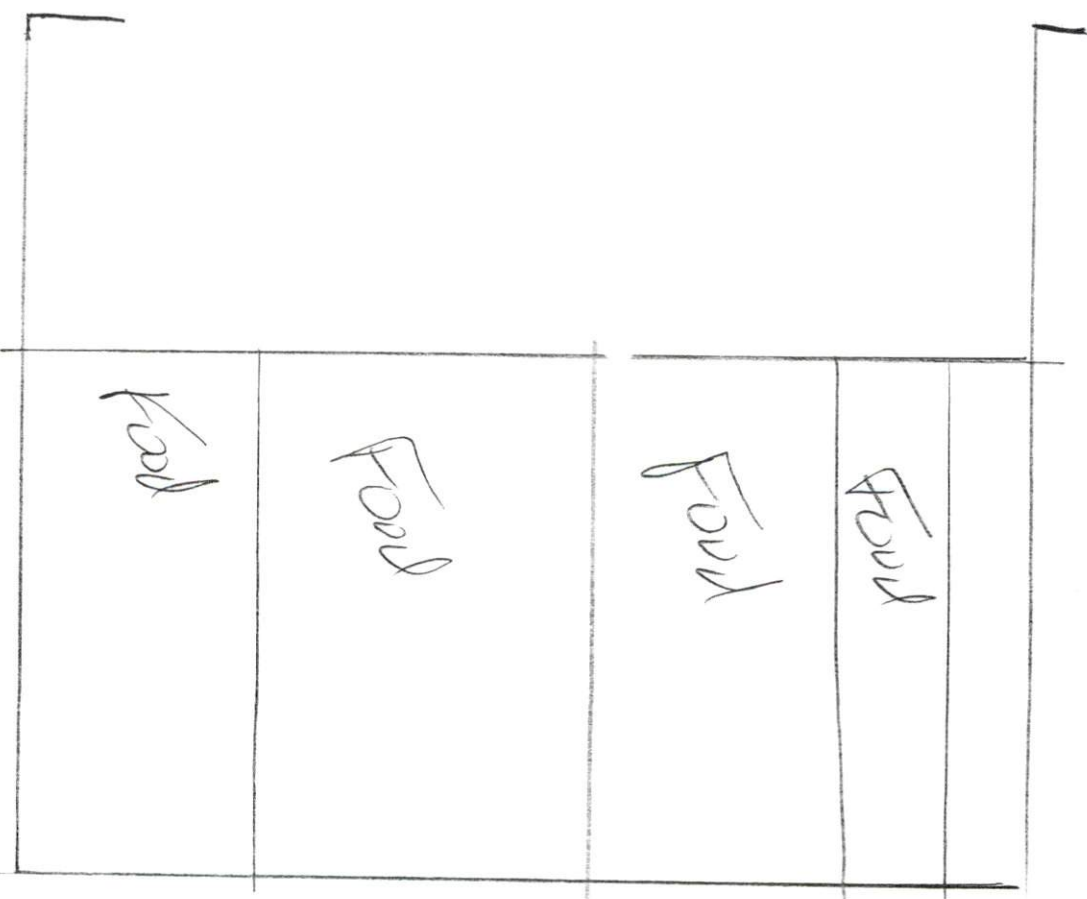




7.5 Tall

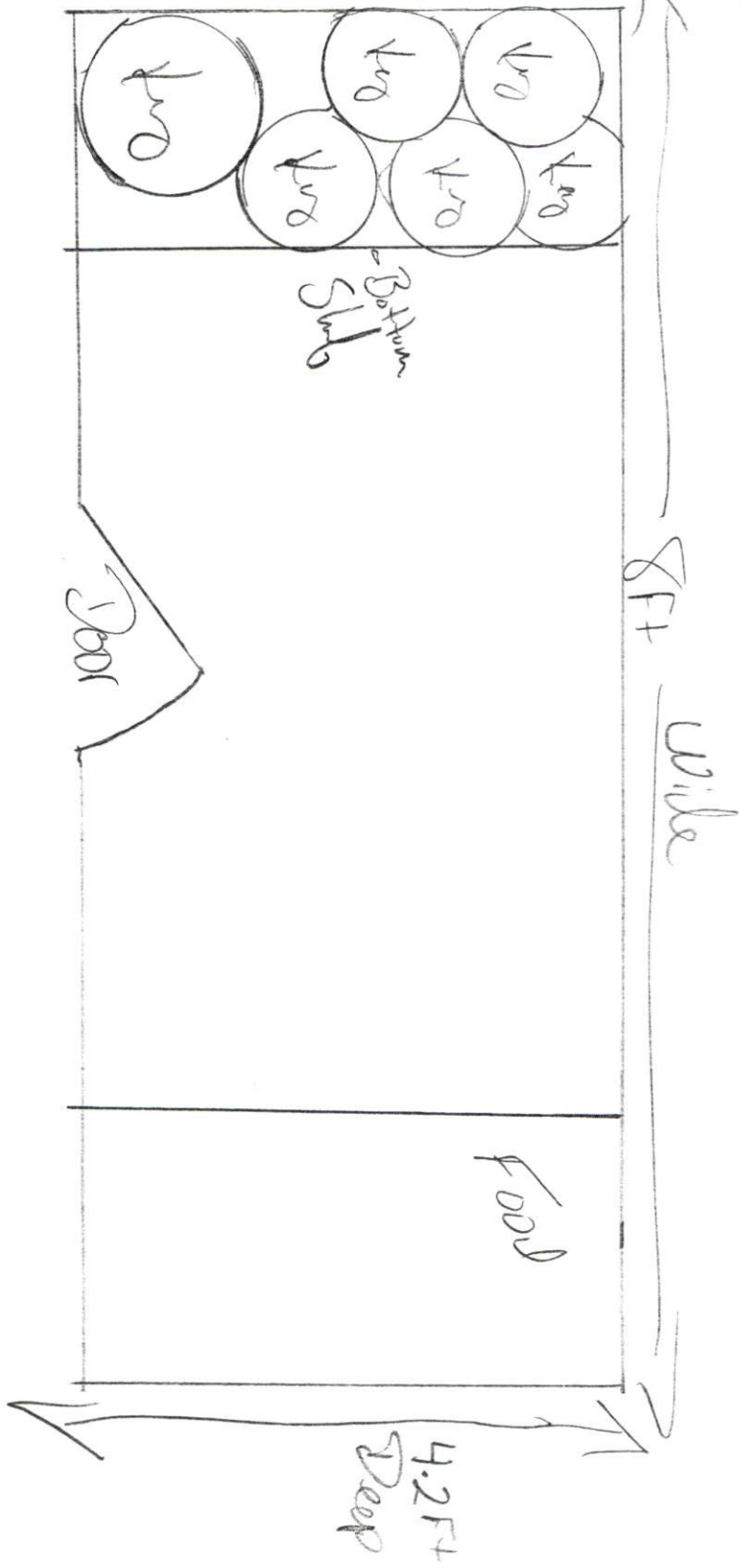


Door





Food cooler top



# Smoke Area, Kicking Combs

