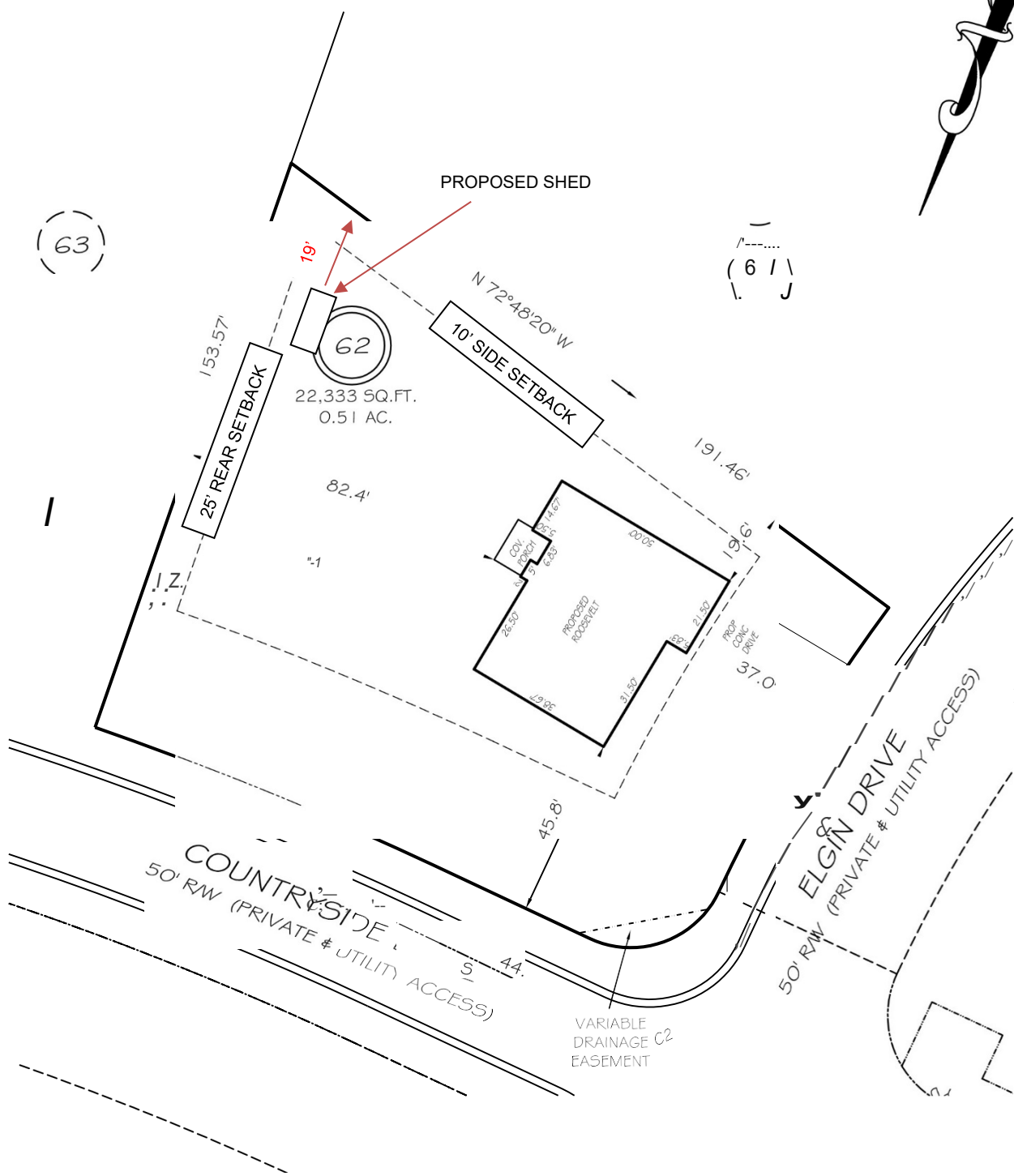


[Grab your reader's attention with a great quote from the document or use this space to emphasize a key point. To place this text box anywhere on the page, just drag it.]

I, MICHAEL P. GRIFFIN, certify that under my direction and supervision this map was drawn from an actual field survey; that the error of closure of the survey as calculated by coordinates is 1: 10,000+; that the area shown hereon was calculated by coordinates.  
 Witness my hand and seal this day of MONTH 2022.

BK 2021 PG 159-161  
 HARRIS CO. REGISTRY



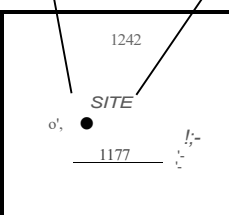
REVISION: RIGHT HAND; ADD FP 2/25/22  
 REVISION: NEW PLANS 2/22/22  
 C1 R=897.77' L=94.01' 587°17'48\"E 93.9G'  
 C2 R=25.00' L=39.21' 330°42'11\"W 35.3G'  
 C3 R=425.00' L=85.24' N1°2'5G\"E 85.10'

**SETBACKS**

FRONT	35'
REAR	25'
SIDE	10'
CORNER	20'

**LEGEND**

EIP	EXISTING IRON PIPE	FES	FLARED END SECTION
IFP	IRON PIPE SET	WM	WATER METER
RW	RIGHT OF WAY	CO	CLEAN OUT
N/F	NOW OR FORMERLY	FH	FIRE HYDRANT
EIS	EXISTING IRON STAKE	CB	CATCH BASIN



**P R E L M I N A R Y**  
 NOT FOR RECORDATION,  
 SALES OR CONVEYANCE

**GRIFFIN LAND SURVEYING, INC.**  
 P. O. BOX 148  
 FUQUAY-VARINA, NC 27526  
 (919) - 567-1963

**PLOT PLAN**  
 FOR  
**H 8 H HOMES**  
 OAKMONT  
 LOT 62

**DRAWN BY** NMF

**DATE** 2/15/22

C H E C K E D   B  Y     M  P  G  

S C A L E   1" = 40'  

ELGIN DRIVE  
NORTH CAROLINA  
HARNETT COUNTY BARBECUE TOWNSHIP