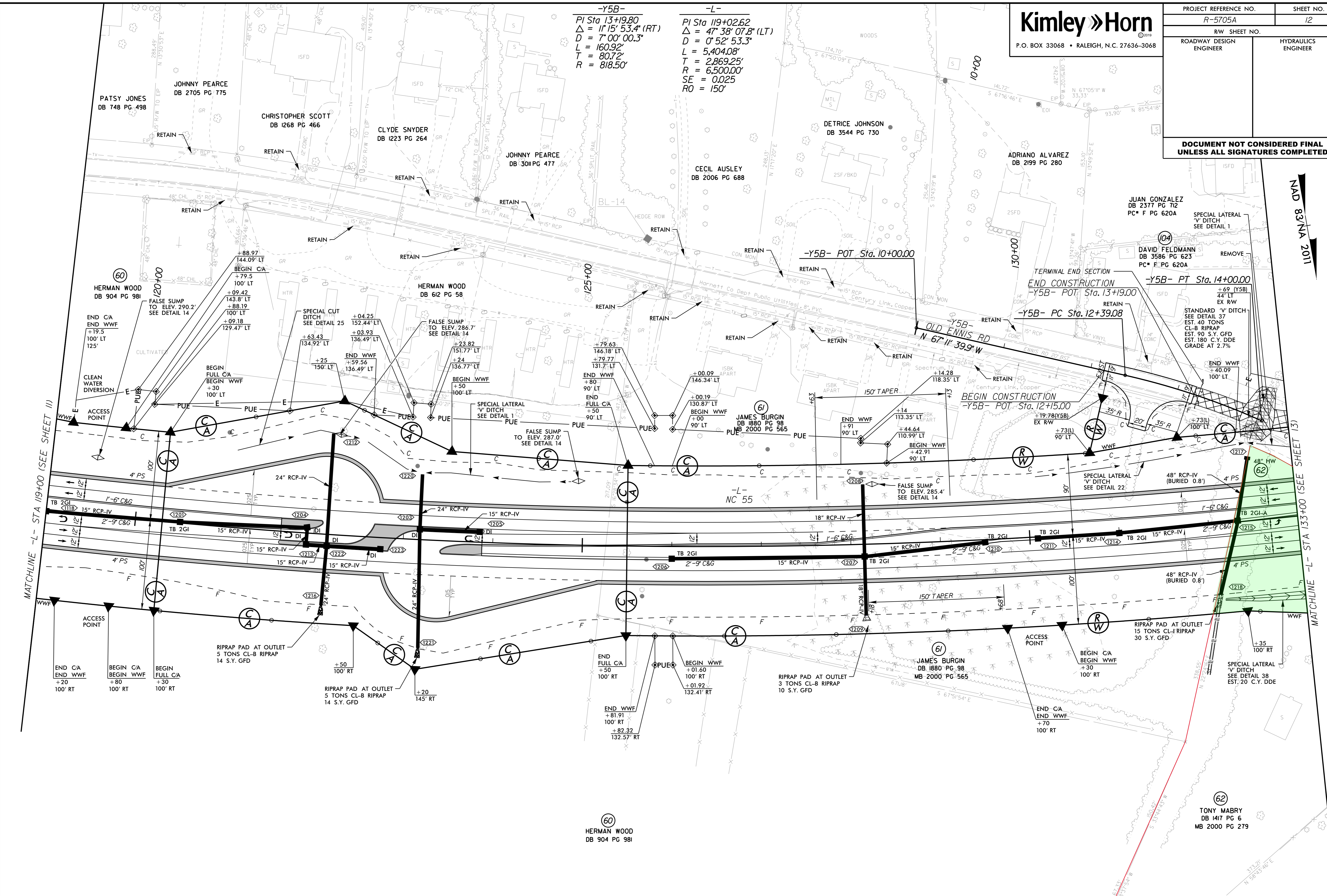


PROJECT REFERENCE NO.	R-5705A	SHEET NO.	12
ROADWAY DESIGN ENGINEER		HYDRAULICS ENGINEER	
DOCUMENT NOT CONSIDERED FINAL UNLESS ALL SIGNATURES COMPLETED			

-Y5B-
 PI Sta 13+19.80
 $\Delta = 1^\circ 15' 53.4" (RT)$
 $D = 7^\circ 00' 00.3"$
 $L = 160.92'$
 $T = 80.72'$
 $R = 818.50'$

-L-
 PI Sta 119+02.62
 $\Delta = 47^\circ 38' 07.8" (LT)$
 $D = 0^\circ 52' 53.3"$
 $L = 5,404.08'$
 $T = 2,869.25'$
 $R = 6,500.00'$
 $SE = 0.025$
 $RO = 150'$



MATCHLINE -L- STA 119+00 (SEE SHEET 11)

MATCHLINE -L- STA 133+00 (SEE SHEET 13)

NAD 83/NA 2011

SEE SHEET 2B-3 FOR INTERSECTION DETAIL 9
 SEE SHEETS 2D-1 TO 2D-4 FOR DRAINAGE DETAILS
 SEE SHEET 29 FOR -L- PROFILE
 SEE SHEET 38 FOR -Y5B- PROFILE

REVISIONS

5/14/99

3/5/2021