

COMMENTS: _____

LANDSCAPE POSITIONS

- R-RIDGE
- S-SHOULDER SLOPE
- L-LINEAR SLOPE
- FS-FOOT SLOPE
- N-NOSE SLOPE
- H-HEAD SLOPE
- CC-CONCLAVE SLOPE
- CV-CONVEX SLOPE
- T-TERRACE
- FP-FLOOD PLAN

GROUP

- I
- II
- III
- IV

TEXTURES

- S-SAND
- LS-LOAMY SAND
- SL-SANDY LOAM
- L-LOAM
- SI-SILT
- SIL-SILT LOAM
- CL-CLAY LOAM
- SCL-SANDY CLAY LOAM
- SIC-SILTY CLAY
- C-CLAY
- SC-SANDY CLAY

.1955 LTAR

- 1.2 - 0.8
- 0.8 - 0.6
- 0.6 - 0.3
- 0.4 - 0.1

CONSISTENCE MOIST

- VFR-VERY FRIABLE
- FR-FRIABLE
- FI-FIRM
- VFI-VERY FIRM
- EFI-EXTREMELY FIRM

WET

- NS-NON-STICKY
- SS-SLIGHTLY STICKY
- S-STICKY
- VS-VERY STICKY
- NP-NON-PLASTIC
- SP-SLIGHTLY STICKY
- P-PLASTIC
- VP-VERY PLASTIC

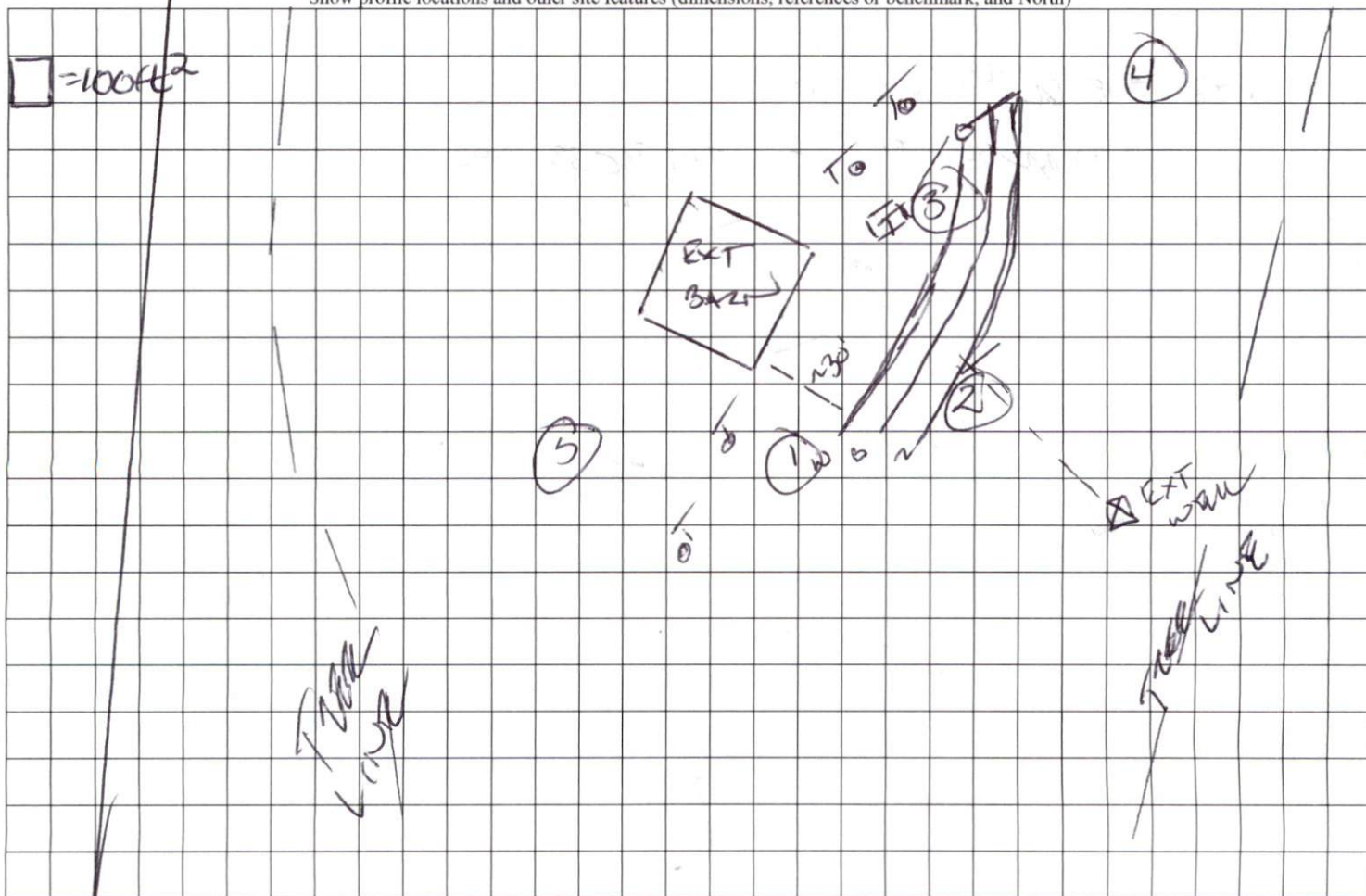
STRUCTURE

- SG-SINGLE GRAIN
- M-MASSIVE
- CR-CRUMB
- GR-GRANULAR
- SBK-SUBANGULAR BLOCKY
- ABK-ANGULAR BLOCKY
- PL-PLATY
- PR-PRISMATIC

MINERALOGY

- SLIGHTLY EXPANSIVE
- EXPANSIVE

Show profile locations and other site features (dimensions, references or benchmark, and North)



Harnett GIS

NOT FOR LEGAL USE



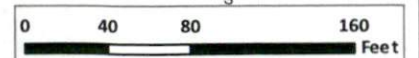
Harnett County GIS, Harnett County Public Utilities



GIS/E-911 Addressing

June 13, 2022

- | | | | |
|-------------------------------|-------------------|---------------|---------|
| Surrounding County Boundaries | MajorRoads | Mile_Markers | Streams |
| City Limits | Interstate | Mile_Markers | |
| Address Numbers | NC | Railroad | |
| Airport | US | Parcels | |
| | Roads | CapeFearRiver | |



1 inch = 94 feet

Harnett GIS

NOT FOR LEGAL USE



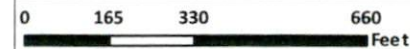
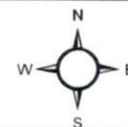
Harnett County © S. Harnett County Public Utilities



GIS/E-911 Addressing

June 13, 2022

- | | | |
|-------------------------------|--------------------|---------------------|
| Surrounding County Boundaries | Major Roads | Mile_Markers |
| City Limits | Interstate | Mile_Markers |
| Address Numbers | NC | Railroad |
| Airport | US | Parcels |
| | Roads | CapeFearRiver |



1 inch = 376 feet