

COMMENTS: _____

LANDSCAPE POSITIONS

- R-RIDGE
- S-SHOULDER SLOPE
- L-LINEAR SLOPE
- FS-FOOT SLOPE
- N-NOSE SLOPE
- H-HEAD SLOPE
- CC-CONCLAVE SLOPE
- CV-CONVEX SLOPE
- T-TERRACE
- FP-FLOOD PLAN

STRUCTURE

- SG-SINGLE GRAIN
- M-MASSIVE
- CR-CRUMB
- GR-GRANULAR
- SBK-SUBANGULAR BLOCKY
- ABK-ANGULAR BLOCKY
- PL-PLATY
- PR-PRISMATIC

GROUP

TEXTURES

.1955 LTAR

CONSISTENCE MOIST

WET

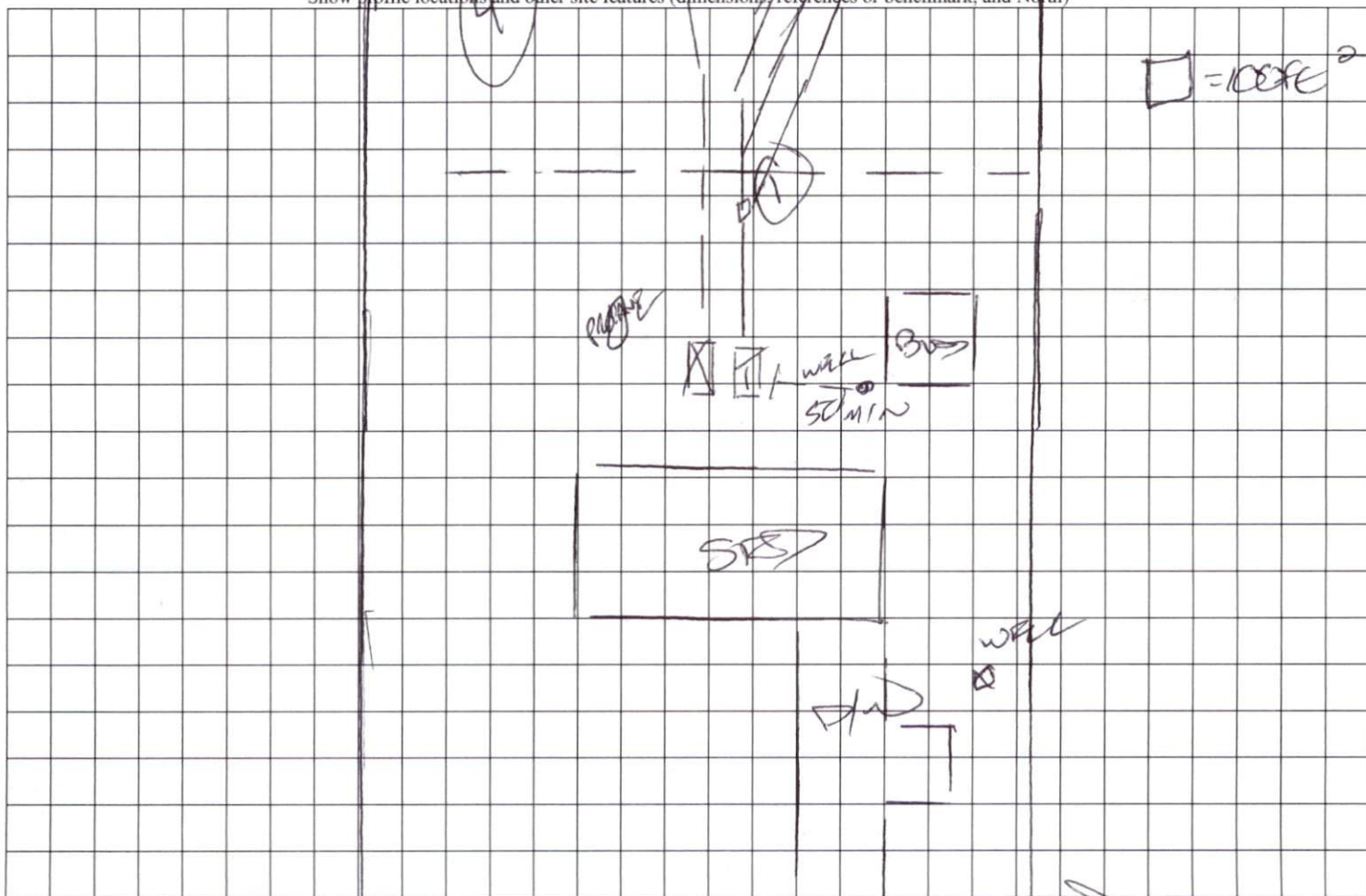
I	S-SAND LS-LOAMY SAND	1.2 - 0.8	VFR-VERY FRIABLE FR-FRIABLE
II	SL-SANDY LOAM L-LOAM	0.8 - 0.6	FI-FIRM VFI-VERY FIRM EFI-EXTREMELY FIRM
III	SI-SILT SIL-SILT LOAM CL-CLAY LOAM SCL-SANDY CLAY LOAM	0.6 - 0.3	
IV	SIC-SILTY CLAY C-CLAY SC-SANDY CLAY	0.4 - 0.1	

- NS-NON-STICKY
- SS-SLIGHTLY STICKY
- S-STICKY
- VS-VERY STICKY
- NP-NON-PLASTIC
- SP-SLIGHTLY STICKY
- P-PLASTIC
- VP-VERY PLASTIC

MINERALOGY

- SLIGHTLY EXPANSIVE
- EXPANSIVE

Show profile locations and other site features (dimensions, references or benchmark, and North)



604 25 (S-2 1544)