

# HARNETT COUNTY DEPARTMENT OF PUBLIC HEALTH

## Well Abandonment Permit

Permit Number: NA      Application Number: EH2101-0033      Applicant Name: Dan Ryan Blds LLC

Address: 1133 Chalybeate Springs Road Angier, NC 27501 – 2 Wells

Type of Well: Bored Total Depth: 55ft Diameter: 20in Grouted: No Static Water Level: 34ft

Type of Well: Bored Total Depth: 33ft Diameter: 24in Grouted: No Static Water Level: 13ft

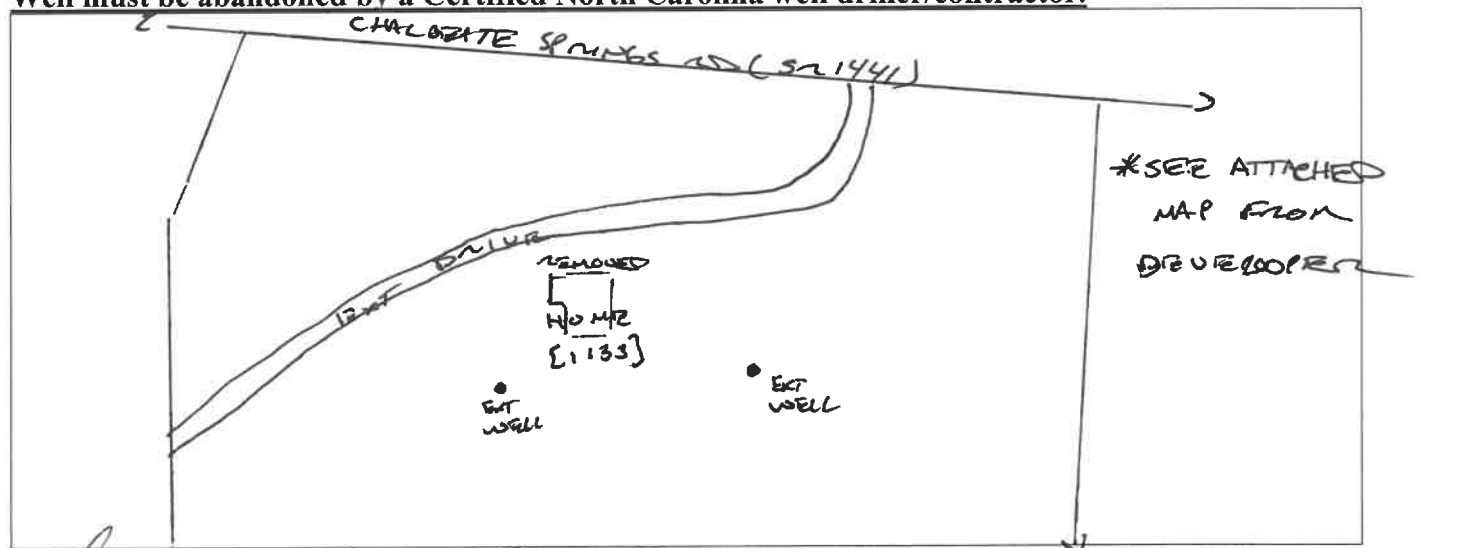
Directions to Site: 1133 Chalybeate Springs Road (SR 1441)

Agent of the State [Signature] Date: 02/10/2021

Abandonment Procedure: Abandonment Procedure: 1. Remove all plumbing or piping into the well, along with any obstructions inside the well; 2. Remove as much of the well tile casing a possible, but no less than to a depth of three feet below land surface; 3. remove all soil or other subsurface material present down to the top of the remaining well casing, and extending to a width of at least 12 inches outside of the well casing on all sides; 4. Fill the well up to the top of the remaining casing with cement grout, concrete grout, bentonite grout, dry clay, or material excavated during drilling of the well and then compacted in place; 5. Pour a one foot thick concrete grout or cement grout plug that fills the entire excavated area about the top of the casing, including the area extending on all sides of the casing out to a width of at least 12 inches on all sides; 6. Complete the abandonment process by filling the remainder of the well above the concrete or cement plug with additional concrete grout, cement grout, or soil. A record of the abandonment must be submitted within 30 days of abandonment.

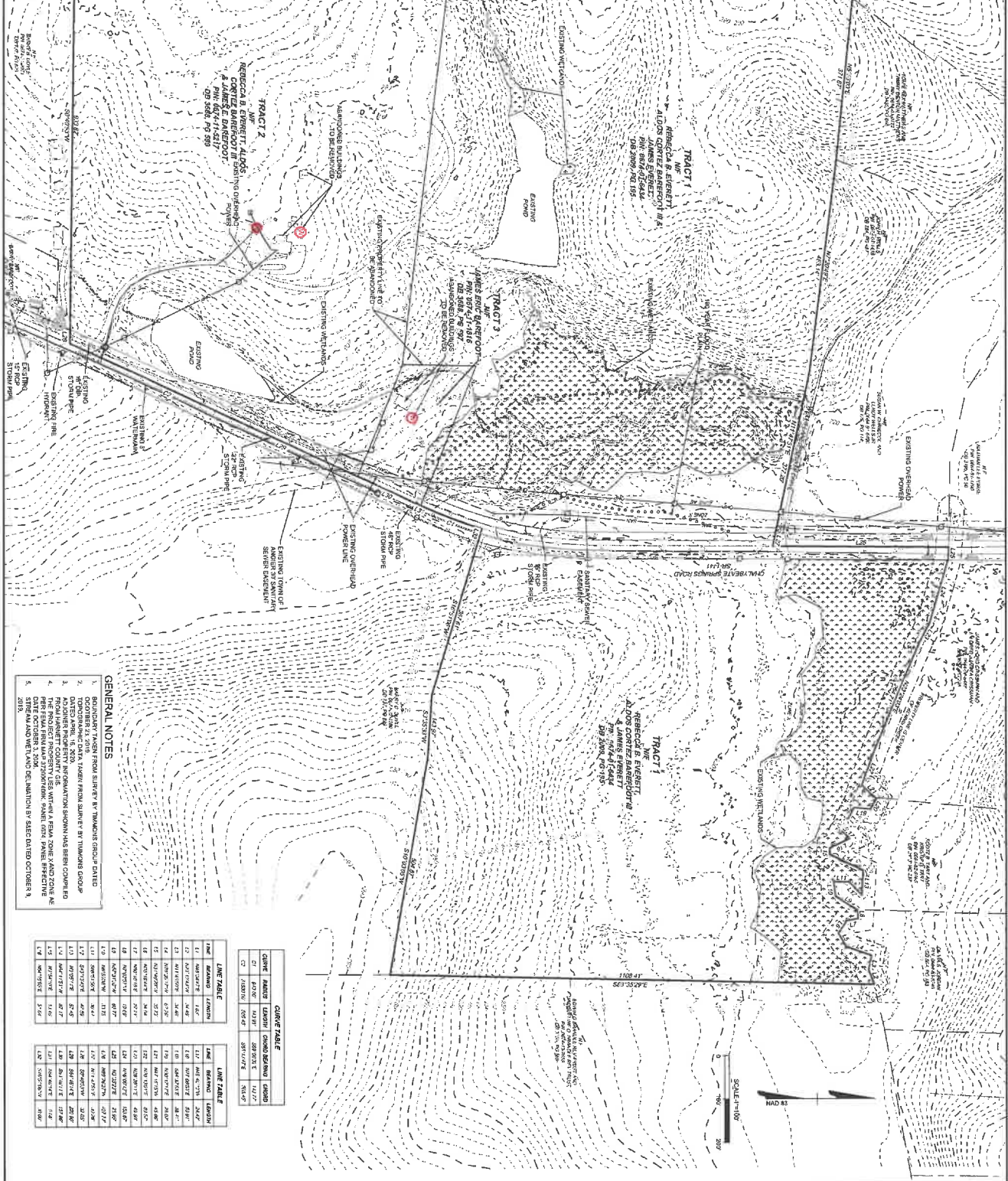
Note: Contact Harnett County Environmental Health for appointment prior to beginning of well abandonment procedure.

**Well must be abandoned by a Certified North Carolina well driller/contractor.**



[Signature]      2/11/21  
Property Owner's or Owners Legal Representative Signature Required      Date

**811**  
Know what's Below.  
Call before you dig.



**GENERAL NOTES**

- BOUNDARY PINS FROM SURVEY BY TIMMONS GROUP DATED OCTOBER 21, 2011, MATCH FROM SURVEY BY TIMMONS GROUP DATED APRIL 16, 2010.
- DO NOT USE PROPERTY INFORMATION SHOWN HAS BEEN COVERED FROM THE PROJECT PROPERTY LIES WITH A FEMA ZONE X AND ZONE AE DATE OCTOBER 1, 2006.
- STRIP AND WETLAND DELINEATION IS DATED OCTOBER 9, 2011.

LINE	BEARING	LENGTH	LINE	BEARING	LENGTH
1	N 89° 54' 17" E	146.48	11	N 89° 54' 17" E	146.48
2	S 89° 54' 17" W	146.48	12	S 89° 54' 17" W	146.48
3	N 89° 54' 17" E	146.48	13	N 89° 54' 17" E	146.48
4	S 89° 54' 17" W	146.48	14	S 89° 54' 17" W	146.48
5	N 89° 54' 17" E	146.48	15	N 89° 54' 17" E	146.48
6	S 89° 54' 17" W	146.48	16	S 89° 54' 17" W	146.48
7	N 89° 54' 17" E	146.48	17	N 89° 54' 17" E	146.48
8	S 89° 54' 17" W	146.48	18	S 89° 54' 17" W	146.48
9	N 89° 54' 17" E	146.48	19	N 89° 54' 17" E	146.48
10	S 89° 54' 17" W	146.48	20	S 89° 54' 17" W	146.48
21	N 89° 54' 17" E	146.48	22	N 89° 54' 17" E	146.48
23	S 89° 54' 17" W	146.48	24	S 89° 54' 17" W	146.48
25	N 89° 54' 17" E	146.48	26	N 89° 54' 17" E	146.48
27	S 89° 54' 17" W	146.48	28	S 89° 54' 17" W	146.48
29	N 89° 54' 17" E	146.48	30	N 89° 54' 17" E	146.48
31	S 89° 54' 17" W	146.48	32	S 89° 54' 17" W	146.48
33	N 89° 54' 17" E	146.48	34	N 89° 54' 17" E	146.48
35	S 89° 54' 17" W	146.48	36	S 89° 54' 17" W	146.48
37	N 89° 54' 17" E	146.48	38	N 89° 54' 17" E	146.48
39	S 89° 54' 17" W	146.48	40	S 89° 54' 17" W	146.48
41	N 89° 54' 17" E	146.48	42	N 89° 54' 17" E	146.48
43	S 89° 54' 17" W	146.48	44	S 89° 54' 17" W	146.48
45	N 89° 54' 17" E	146.48	46	N 89° 54' 17" E	146.48
47	S 89° 54' 17" W	146.48	48	S 89° 54' 17" W	146.48
49	N 89° 54' 17" E	146.48	50	N 89° 54' 17" E	146.48
51	S 89° 54' 17" W	146.48	52	S 89° 54' 17" W	146.48
53	N 89° 54' 17" E	146.48	54	N 89° 54' 17" E	146.48
55	S 89° 54' 17" W	146.48	56	S 89° 54' 17" W	146.48
57	N 89° 54' 17" E	146.48	58	N 89° 54' 17" E	146.48
59	S 89° 54' 17" W	146.48	60	S 89° 54' 17" W	146.48
61	N 89° 54' 17" E	146.48	62	N 89° 54' 17" E	146.48
63	S 89° 54' 17" W	146.48	64	S 89° 54' 17" W	146.48
65	N 89° 54' 17" E	146.48	66	N 89° 54' 17" E	146.48
67	S 89° 54' 17" W	146.48	68	S 89° 54' 17" W	146.48
69	N 89° 54' 17" E	146.48	70	N 89° 54' 17" E	146.48
71	S 89° 54' 17" W	146.48	72	S 89° 54' 17" W	146.48
73	N 89° 54' 17" E	146.48	74	N 89° 54' 17" E	146.48
75	S 89° 54' 17" W	146.48	76	S 89° 54' 17" W	146.48
77	N 89° 54' 17" E	146.48	78	N 89° 54' 17" E	146.48
79	S 89° 54' 17" W	146.48	80	S 89° 54' 17" W	146.48
81	N 89° 54' 17" E	146.48	82	N 89° 54' 17" E	146.48
83	S 89° 54' 17" W	146.48	84	S 89° 54' 17" W	146.48
85	N 89° 54' 17" E	146.48	86	N 89° 54' 17" E	146.48
87	S 89° 54' 17" W	146.48	88	S 89° 54' 17" W	146.48
89	N 89° 54' 17" E	146.48	90	N 89° 54' 17" E	146.48
91	S 89° 54' 17" W	146.48	92	S 89° 54' 17" W	146.48
93	N 89° 54' 17" E	146.48	94	N 89° 54' 17" E	146.48
95	S 89° 54' 17" W	146.48	96	S 89° 54' 17" W	146.48
97	N 89° 54' 17" E	146.48	98	N 89° 54' 17" E	146.48
99	S 89° 54' 17" W	146.48	100	S 89° 54' 17" W	146.48

**TIMMONS GROUP**  
NORTH CAROLINA LICENSE NO. C-1652

**NEILL'S POINT**  
CHAL VEBATE SPRINGS RD. TOWN OF ANGLIER, HARNETT COUNTY, NORTH CAROLINA

**EXISTING CONDITIONS**

YOUR VISION ACHIEVED THROUGH OURS.

DATE: 09/02/2024

SCALE: 1" = 400'

REVISION DESCRIPTION:

THIS DRAWING PREPARED AT THE  
RAILERS OFFICE  
5410 Trinity Road, Suite 102 | Raleigh, NC 27607  
TEL: 919.366.4151 | FAX: 919.833.5124 | www.timmons.com

9/2/24

These plans and associated documents are the exclusive property of TIMMONS GROUP and shall not be used, copied, reproduced, or otherwise used in part or whole without the express written consent of TIMMONS GROUP.