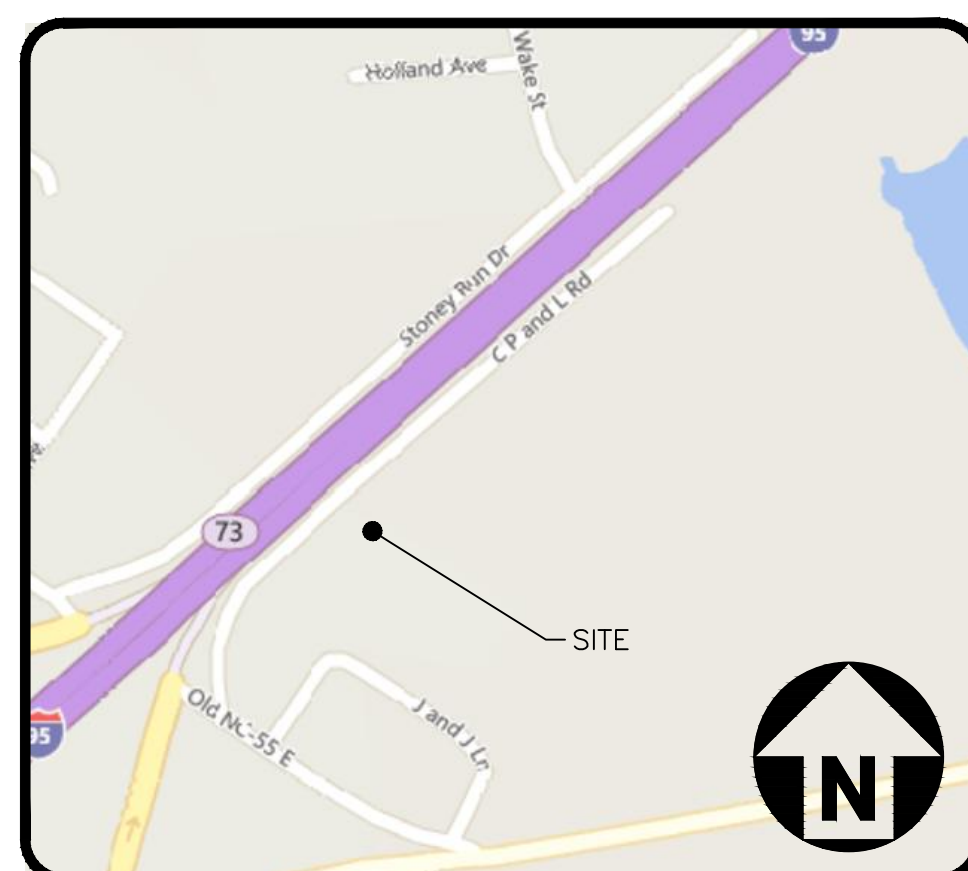


DUKE ENERGY PROGRESS DUNN LAYDOWN YARD IMPROVEMENTS

PERMIT DRAWINGS

120 CPL ROAD
 DUNN, NORTH CAROLINA
 NC PIN: 1526140843, 1526157130
 PROJECT NUMBER: DKE-19260
 DATE: AUGUST 23, 2019

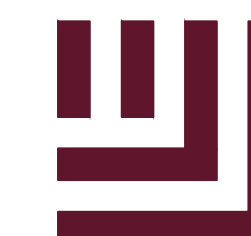
LATITUDE: 35.301218
 LONGITUDE: -78.594429



VICINITY MAP
NTS

OWNER:

DUKE ENERGY PROGRESS
410 S. WILMINGTON STREET
RALEIGH, NC 27601
CONTACT: MARK B. FRANKLIN
EMAIL: MARKB.FRANKLIN@am.jll.com
PHONE: (919) 427-7718



The John R. McAdams Company, Inc.
 2905 Meridian Parkway
 Durham, NC 27713

 phone 919.361.5000
 fax 919.361.2269
 license number: C-0293, C-187
 www.mcadamsco.com

MCADAMS



DUNN LAYDOWN YARD
MODULAR OFFICE BUILDING
 SITE PLAN

LOCATION	HARNETT COUNTY, NORTH CAROLINA
SCALE	NTS
DRAWN	DAA
DATE	8/23/2019
SCALE RATIO	1:1
CHK.	---
DWG. NO.	---
PRJ. NO.	DKE-19260
APP.	---
SHEET	1 OF 2

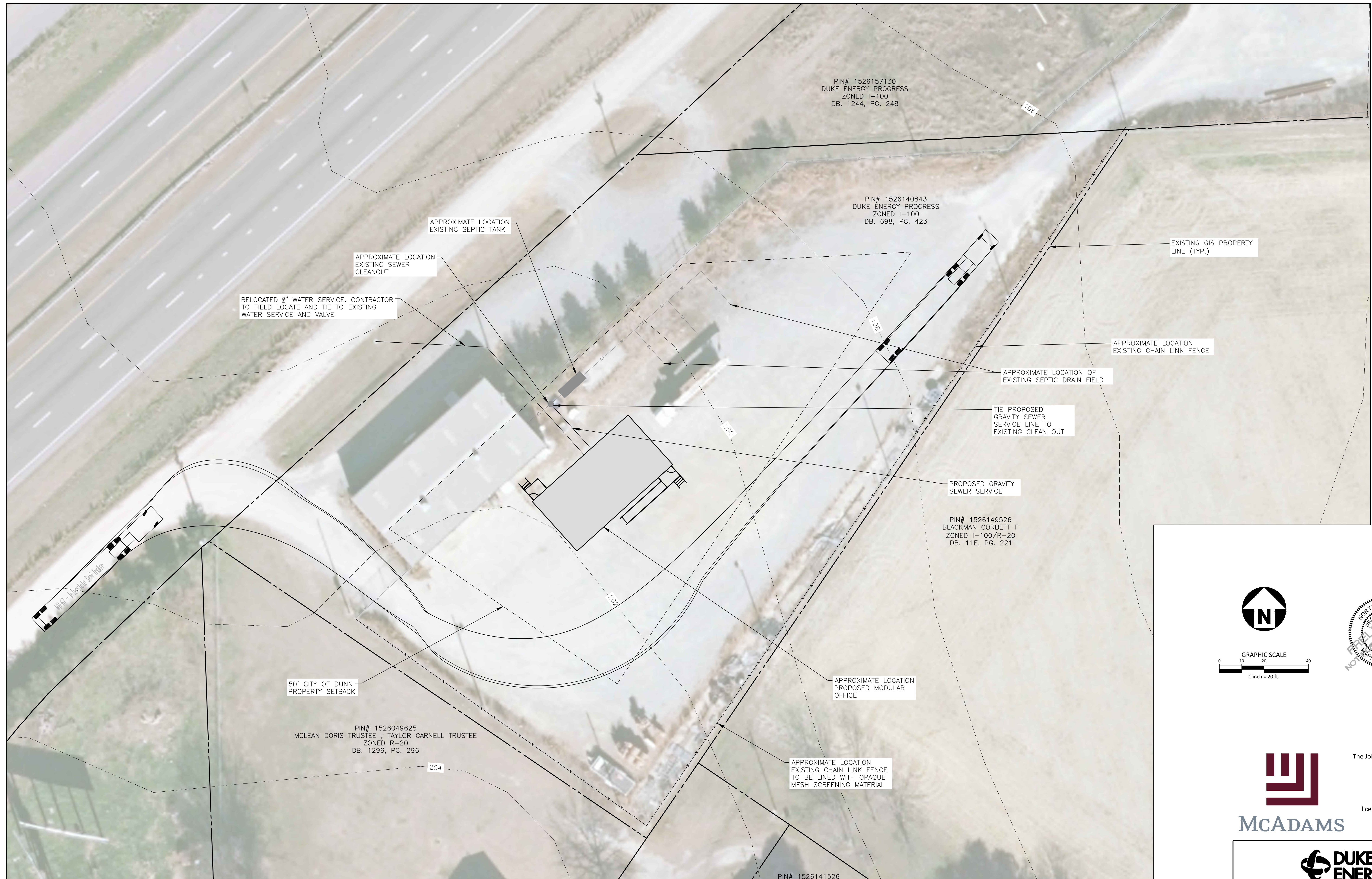


**Know what's below.
Call before you dig.**

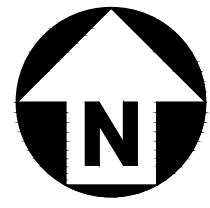
CONTRACTOR SHALL NOTIFY "NC811" (811) OR (1-800-632-4949) AT LEAST 3 FULL BUSINESS DAYS PRIOR TO BEGINNING CONSTRUCTION OR EXCAVATION TO HAVE EXISTING UTILITIES LOCATED. CONTRACTOR SHALL CONTACT ANY LOCAL UTILITIES THAT PROVIDE THEIR OWN LOCATOR SERVICES INDEPENDENT OF "NC811". REPORT ANY DISCREPANCIES TO THE ENGINEER IMMEDIATELY.

PRELIMINARY DRAWING - NOT RELEASED FOR CONSTRUCTION

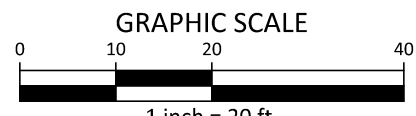
NO.	DATE	REVISION	BY	CK.	APP.



X:\Projects\DKED-19260\04-Production\Engineering\Current Drawings\DKED19260x - S1.dwg, 8/23/2019 8:32:10 AM, Alfred, Dorton



 GRAPHIC SCALE



 1 inch = 20 ft.

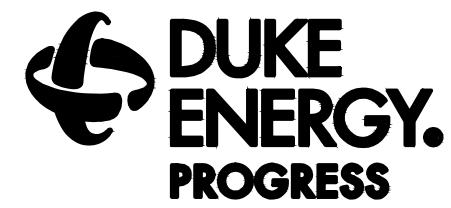




McADAMS

The John R. McAdams Company, Inc.
 2905 Meridian Parkway
 Durham, NC 27713

 phone 919.361.5000
 fax 919.361.2269
 license number: C-0293, C-187
 www.mcadamsco.com



DUKE ENERGY PROGRESS

**DUNN LAYDOWN YARD
 MODULAR OFFICE BUILDING
 SITE PLAN**

NO.	DATE	REVISION	BY	CK.	APP.

PRELIMINARY DRAWING - NOT RELEASED FOR CONSTRUCTION

LOCATION HARNETT COUNTY, NORTH CAROLINA
 SCALE 1"=50' SCALE RATIO 1:1 PRJ. NO. DKE-19260
 DRAWN DAA CHK. MAH APP. -
 DATE 8/23/2019 DWG. NO. SHEET 2 OF 2