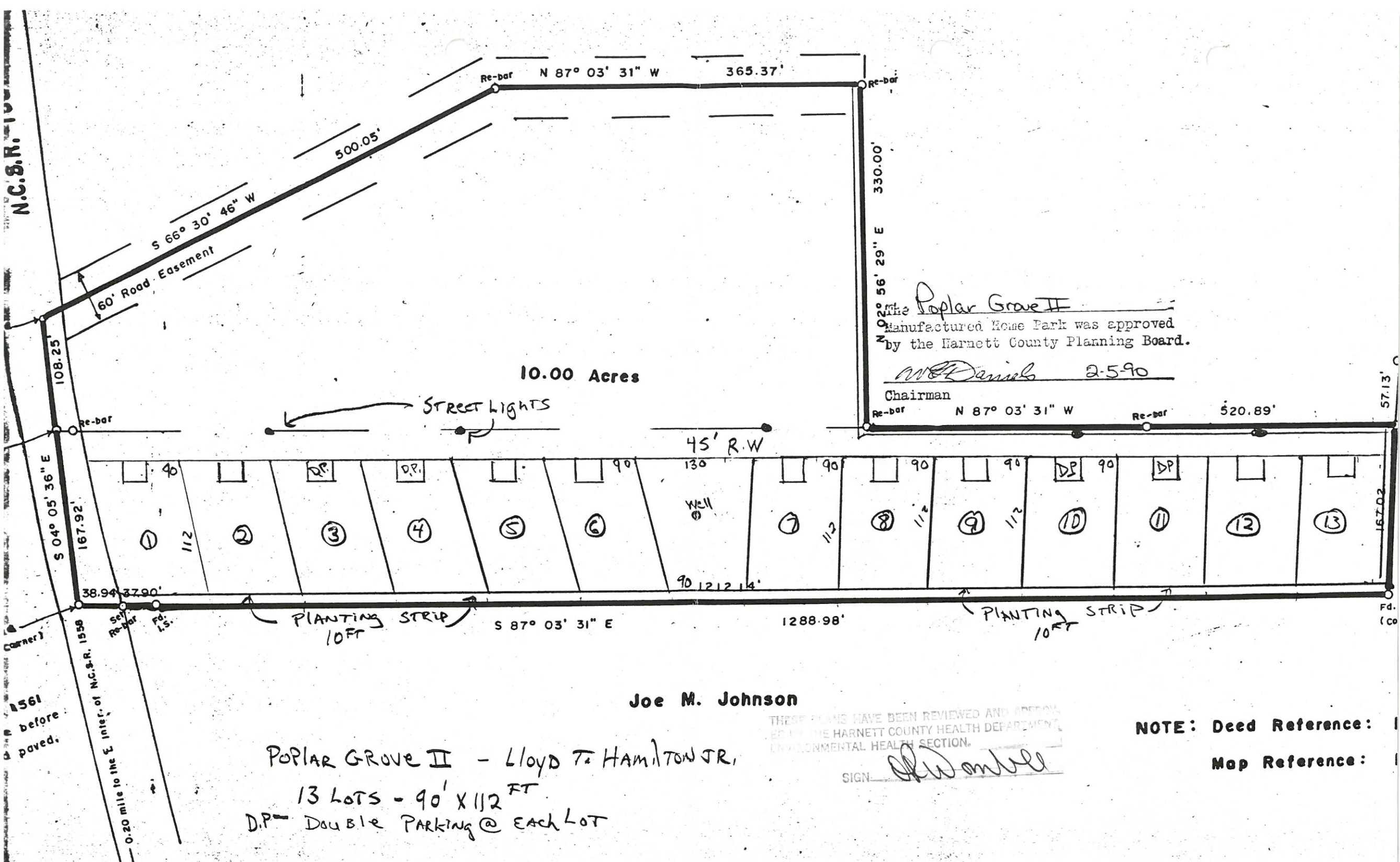


N.C.S.R. 1558



The Poplar Grove II
 Manufactured Home Park was approved
 by the Harnett County Planning Board.

W. Daniel 2-5-90
 Chairman

Joe M. Johnson

THESE PLANS HAVE BEEN REVIEWED AND APPROVED BY THE HARNETT COUNTY HEALTH DEPARTMENT ENVIRONMENTAL HEALTH SECTION.

SIGN: *W. Daniel*

NOTE: Deed Reference: _____
 Map Reference: _____

POPLAR GROVE II - LLOYD T. HAMILTON JR,
 13 LOTS - 90' X 112 FT
 D.P. - Double Parking @ Each Lot

1561 before paved.

0.20 mile to the E Inter. of N.C.S.R. 1558