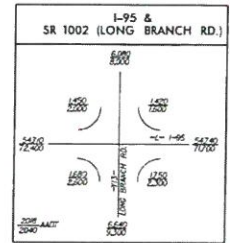


ROW = 2.282
 PUE = 0.750
 TDE = 0.381
 DUE = 0.079
 TCE = 0.009

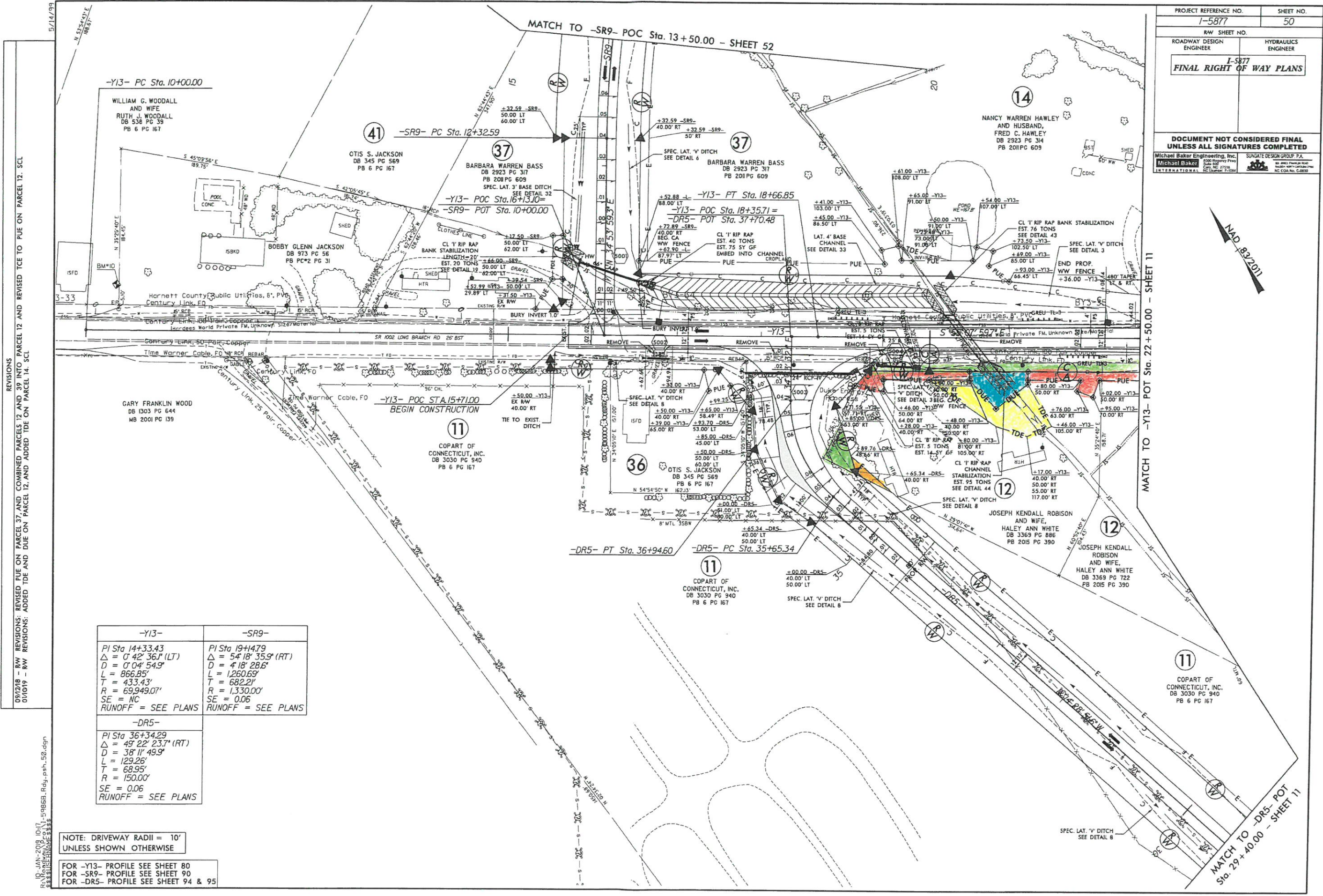


NOTE: DRIVEWAY RADIUS = 10' UNLESS SHOWN OTHERWISE

File Sta	Pi Sta	Pa Sta	Pe Sta	Pt Sta	Pv Sta
Sta 10+00.00	Sta 10+00.00	Sta 10+00.00	Sta 10+00.00	Sta 10+00.00	Sta 10+00.00
Sta 10+00.00	Sta 10+00.00	Sta 10+00.00	Sta 10+00.00	Sta 10+00.00	Sta 10+00.00
Sta 10+00.00	Sta 10+00.00	Sta 10+00.00	Sta 10+00.00	Sta 10+00.00	Sta 10+00.00
Sta 10+00.00	Sta 10+00.00	Sta 10+00.00	Sta 10+00.00	Sta 10+00.00	Sta 10+00.00
Sta 10+00.00	Sta 10+00.00	Sta 10+00.00	Sta 10+00.00	Sta 10+00.00	Sta 10+00.00

FOR -L- PROFILE SEE SHEET 74
 FOR -Y13- PROFILE SEE SHEET 80 & 81
 FOR -Y13PA- PROFILE SEE SHEET 81 & 82
 FOR -Y13PC- PROFILE SEE SHEET 82
 FOR -Y13PD- PROFILE SEE SHEET 83
 FOR -Y13PE- PROFILE SEE SHEET 84
 FOR -Y13PF- PROFILE SEE SHEET 85
 FOR -Y13PG- PROFILE SEE SHEET 86
 FOR -Y13PH- PROFILE SEE SHEET 87
 FOR -Y13PI- PROFILE SEE SHEET 88
 FOR -Y13PJ- PROFILE SEE SHEET 89
 FOR -Y13PK- PROFILE SEE SHEET 90
 FOR -Y13PL- PROFILE SEE SHEET 91
 FOR -Y13PM- PROFILE SEE SHEET 92
 FOR -Y13PN- PROFILE SEE SHEET 93
 FOR -Y13PO- PROFILE SEE SHEET 94
 FOR -Y13PP- PROFILE SEE SHEET 95

PROJECT REFERENCE NO.	SHEET NO.
1-5877	50
RAW SHEET NO.	
ROADWAY DESIGN ENGINEER	HYDRAULICS ENGINEER
I-5877 FINAL RIGHT OF WAY PLANS	
DOCUMENT NOT CONSIDERED FINAL UNLESS ALL SIGNATURES COMPLETED	
Michael Baker Engineering, Inc. Michael Baker INTERNATIONAL	SUNGATE DESIGN GROUP P.A. SUNGATE DESIGN GROUP P.A. INTERNATIONAL



REVISIONS:
 09/12/18 - RW REVISIONS: REVISED PUE ON PARCEL 37, AND COMBINED PARCELS 12 AND 39 INTO PARCEL 12 AND REVISED TCE TO PUE ON PARCEL 12. SCL
 01/01/19 - RW REVISIONS: ADDED TDE AND DUE ON PARCEL 12, AND ADDED TDE ON PARCEL 14. SCL

-Y13-	-SR9-
PI Sta 14+33.43	PI Sta 19+14.79
$\Delta = 0' 42' 36.1''$ (LT)	$\Delta = 5' 18' 35.9''$ (RT)
$D = 0' 04' 54.9''$	$D = 4' 18' 28.6''$
$L = 866.85'$	$L = 1,260.69'$
$T = 433.43'$	$T = 682.21'$
$R = 69,949.07'$	$R = 1,330.00'$
SE = NC	SE = 0.06
RUNOFF = SEE PLANS	RUNOFF = SEE PLANS

-DR5-
PI Sta 36+34.29
$\Delta = 49' 22' 23.7''$ (RT)
$D = 38' 11' 49.9''$
$L = 129.26'$
$T = 68.95'$
$R = 150.00'$
SE = 0.06
RUNOFF = SEE PLANS

NOTE: DRIVEWAY RADII = 10' UNLESS SHOWN OTHERWISE

FOR -Y13- PROFILE SEE SHEET 80
 FOR -SR9- PROFILE SEE SHEET 90
 FOR -DR5- PROFILE SEE SHEET 94 & 95

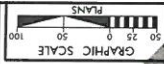
18-JAN-2019 10:17 - 59986B.Rdw, psh, 50.dgn
 \$\$\$\$\$\$

MATCH TO -Y13- POT Sta. 22 + 50.00 - SHEET 11

MATCH TO -DR5- POT Sta. 29 + 40.00 - SHEET 11



FOR L-12, MONTE SEE SHEET 80 & 81
 FOR L-13, MONTE SEE SHEET 81 & 82
 FOR L-14, MONTE SEE SHEET 83
 FOR L-15, MONTE SEE SHEET 84
 FOR L-16, MONTE SEE SHEET 85
 FOR L-17, MONTE SEE SHEET 86
 FOR L-18, MONTE SEE SHEET 87
 FOR L-19, MONTE SEE SHEET 88
 FOR L-20, MONTE SEE SHEET 89
 FOR L-21, MONTE SEE SHEET 90
 FOR L-22, MONTE SEE SHEET 91
 FOR L-23, MONTE SEE SHEET 92
 FOR L-24, MONTE SEE SHEET 93
 FOR L-25, MONTE SEE SHEET 94
 FOR L-26, MONTE SEE SHEET 95



PROJECT SHEET NO. 11.20.22
 SHEET NO. 11.20.22
 DATE 11.20.22
 DRAWN BY [Name]
 CHECKED BY [Name]
 INCOMPLETE PLANS
 UNLESS ALL REVISIONS COMPLETE

REVISIONS
 ON PAGE 22 AND REVISION 122 ON PAGES 24 AND 25. SEE
 11.20.22 FOR PAGES 11 AND 12. REVISION 121 ON PAGES 13 AND 14.
 11.20.22 FOR PAGES 15 AND 16. REVISION 120 ON PAGES 17 AND 18.
 11.20.22 FOR PAGES 19 AND 20. REVISION 119 ON PAGES 21 AND 22.