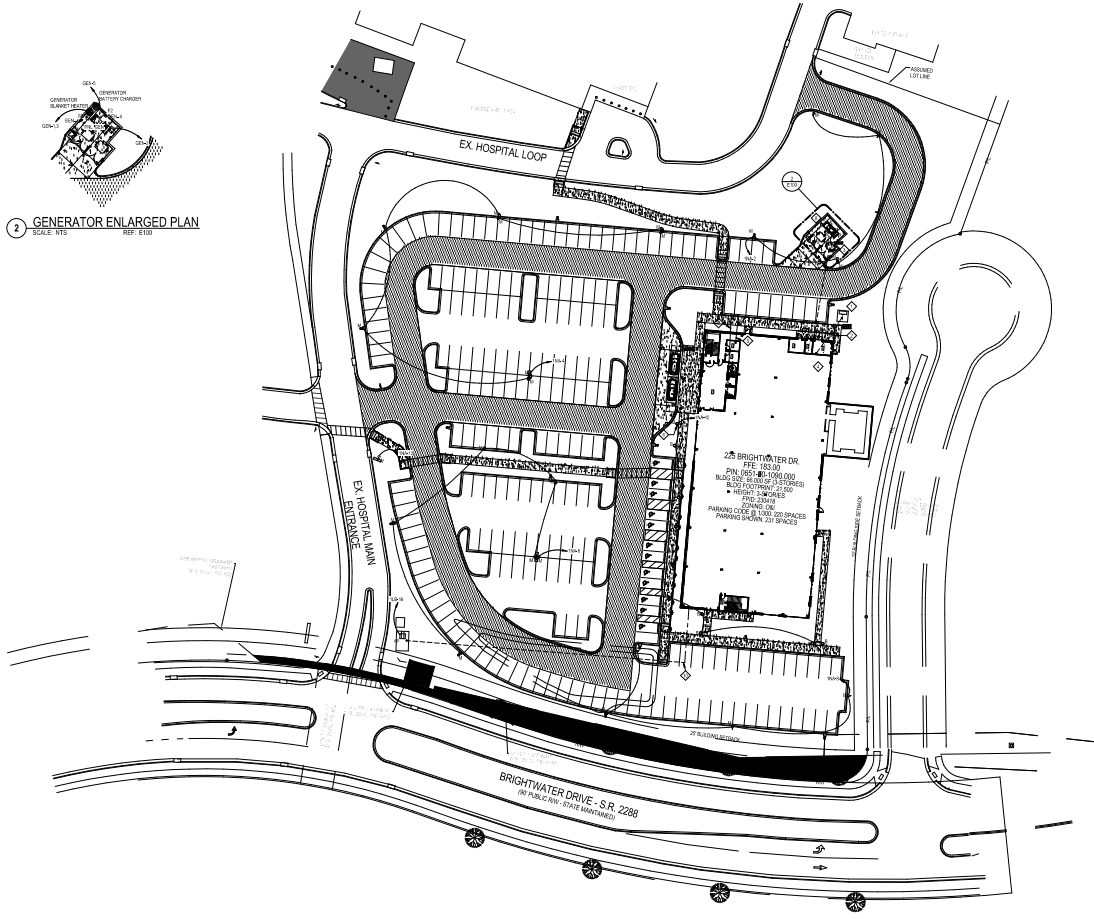


E
D
C
B
A

1 2 3 4 5 6



2 GENERATOR ENLARGED PLAN
SCALE: 1/4" = 1'-0"

1 ELECTRICAL SITE PLAN
SCALE: 1/4" = 1'-0"

MEKING CREED
 1701 STATE ST #500
 WILMINGTON, NC 28403
 P: 910.342.1000
 F: 910.342.1001
 WWW.MEKINGCREED.COM

DESIGNED BY: Shawn Dulin
 CHECKED BY: Shawn Dulin
 DATE: 05/11/23

THE KEITH CORPORATION
 CAPE FEAR VALLEY HEALTH
 HARNETT HEALTH
LS3P
 454 EASTVILLE STREET SUITE 1700
 WILMINGTON, NORTH CAROLINA 28401
 TEL: 757.278.2700 FAX: 757.278.0770
 WWW.LS3P.COM



- E100 - KEYED NOTES**
1. INDICATED DISTRIBUTION TRANSFORMER SHALL BE PROVIDED BY UTILITY. PROVIDE TRANSFORMER PAD PER LOCAL ENERGY REQUIREMENTS.
 2. PROVIDE 3/4" SERVICE DUCTWORK, SEE EN-T-4 CONDUITS, AND ONE (1) 4" CONDUIT (EMPTY) WITH ALL UTILITIES FROM INDICATED TRANSFORMER SECONDARY COMPARTMENT TO SERVICE MANAGER. COORDINATE LOCATION OF ENTRY TO BUILDING WITH LOCATION OF SERVICE MANAGER. COORDINATE CONDUIT ENTRY INTO SECONDARY COMPARTMENT OF TRANSFORMER WITH UTILITY. REFERENCE DUKE ENERGY WEBSITE FOR ELECTRIC SERVICE AND METER INSTALLATION. LATEST EDITION FOR COORDINATION, THE SERVICE CONDUCTORS ON THE SECONDARY SIDE OF THE INDICATED TRANSFORMER SHALL BE TERMINATED IN THE TRANSFORMER BY THE UTILITY. COORDINATE WITH UTILITY.
 3. PROVIDE 3/4" SERVICE DUCTWORK (EN-T-4) 1" CONDUITS FROM EMERGENCY GENERATOR COMPLETELY TO TRIVESTAR SIGNALING STATION (ONE (1) 1" CONDUIT) FROM EMERGENCY GENERATOR PANEL (EN-T-1) PANEL (EN-T-1) CONDUITS FROM EMERGENCY GENERATOR TO AT&T, AT&T, AND AT&S FOR GENERATOR START UP CONTROLS, AND (ONE (1) 1" CONDUIT) WITH ALL UTILITIES. COORDINATE LOCATION OF STUBUPS OUTSIDE OF THE BUILDING WITH LOCATION OF COORDINATION. COORDINATE CONDUIT ENTRY INTO GENERATOR WITH MANUFACTURER'S RECOMMENDED PRACTICE.
 4. BUILDING MAIN SERVICE ENTRANCE SPECIFIED ON DRAWING.
 5. PROVIDE 2 1/2" CONDUITS FROM PROPERTY TELECOM SERVICE POINT TO DATA ROOM FOR DATA, CABLE, ETC. COORDINATE WITH GFI AND TELECOM PROVIDERS.
 6. CONTRACTOR SHALL EXAMINE AND INSTALL NEW OUTDOOR SOLAR LIGHTS TYPE B AT LOCATIONS SHOWN ON DRAWINGS. FIXTURES AND DRIVERS SHALL BE RATED FOR TEMPERATURES BELOW 32 DEGREES FAHRENHEIT. CHECK FOR ALL COLLISIONS.
 7. COORDINATE LOCATION OF PANEL (EN-T) WITH GENERATOR MANUFACTURER REQUIREMENTS PRIOR TO INSTALLATION.
 8. EMERGENCY GENERATOR WITH WEATHERPROOF ENCLOSURE SHALL BE PROVIDED BY ELECTRICAL CONTRACTOR PER SPECIFICATION 20.32 (LOCAL SUPPLIER CODES). GENERATOR SET TO BE BEYOND OF DESEB.
 9. CONTRACTOR SHALL PROVIDE (1) 1" CONDUIT FROM TELECOM SERVICE PROVIDER CONNECTION POINT TO EACH ELEVATOR. COORDINATE WITH TELECOM PROVIDER.
 10. CONTRACTOR SHALL PROVIDE (ONE (1) 1" CONDUIT) FROM BUILDING PACE TO TAMPER PROOF SWITCHES LOCATED AT STREET LAMP.

CFVH HARNETT MOB - Core & Shell
 255 Southpark Drive
 Wilmington, NC 28408
 LS3P PROJECT: 1840-22580

DATE	DESCRIPTION

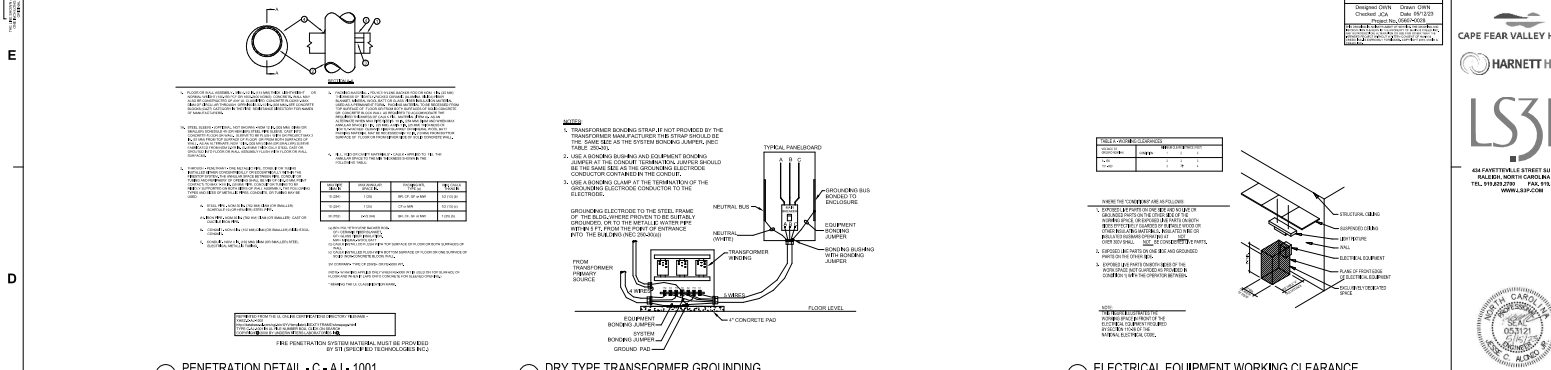
SHEET NAME:
ELECTRICAL SITE PLAN

GRID SUBMISSION: 2023-05-12

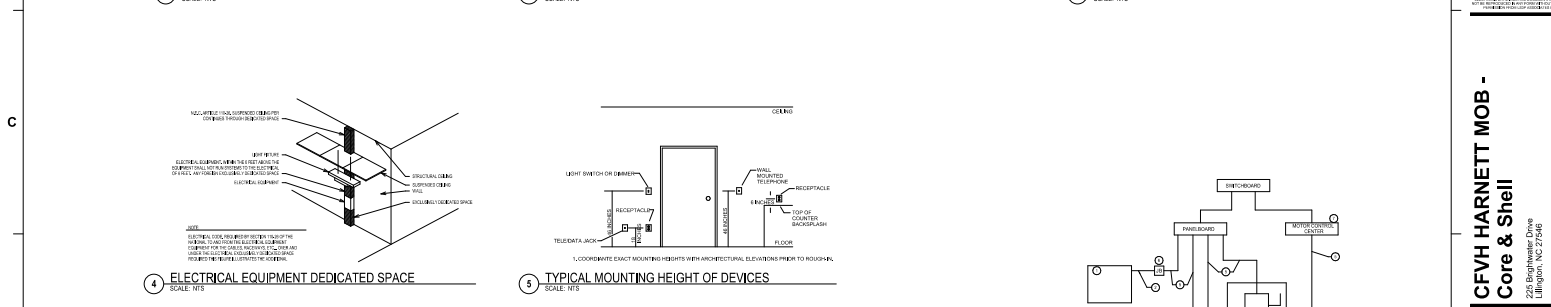
SHEET: **E100**



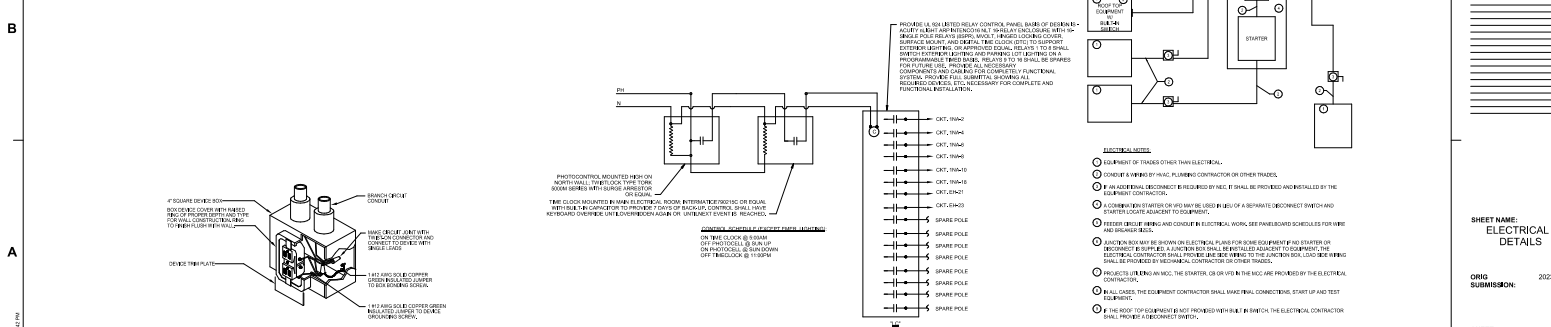
1 PENETRATION DETAIL - C - AJ - 1001
 SCALE: NTS



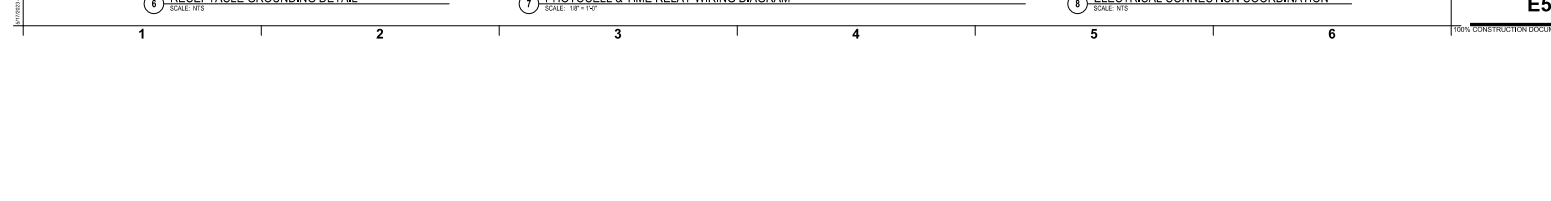
2 DRY TYPE TRANSFORMER GROUNDING
 SCALE: NTS



3 ELECTRICAL EQUIPMENT WORKING CLEARANCE
 SCALE: NTS



4 ELECTRICAL EQUIPMENT DEDICATED SPACE
 SCALE: NTS



5 TYPICAL MOUNTING HEIGHT OF DEVICES
 SCALE: NTS



6 RECEPTACLE GROUNDING DETAIL
 SCALE: NTS



7 PHOTOCELL & TIME RELAY WIRING DIAGRAM
 SCALE: 1/8" = 1'-0"

8 ELECTRICAL CONNECTION COORDINATION
 SCALE: NTS

