

T-MOBILE SITE #:		LOCATION:		VOLTAGE: 240/120 1Ø						MOUNTING / ENCLOSURE:		EXISTING / NEMA 3R		
5RA0183A (PROPOSED)		H-FRAME		MAIN C/B: 200 AMPS						AVAIL. FAULT CURRENT:		EXISTING		
7/21/2022				BUS RATING: 200 AMPS						SHORT CIRCUIT RATING:		EXISTING		

AMPS/ POLES	WIRE & CONDUIT	TYPE	DESCRIPTION	KVA	CKT	A		B	CKT	KVA	DESCRIPTION	TYPE	WIRE & CONDUIT	AMPS/ POLES
60/2	EXISTING	EQ	N/A	0.10	1	0.28			2	0.18	N/A	E	EXISTING	20/1
-	-	EQ	-	0.10	3			0.10	4	0.00	LIGHT	L	EXISTING	20/1
100/2	3#3, 1#8G, 1" C	EQ	EXISTING 6201	5.80	5	9.80			6	4.00	(P) 6160	EQ	2#3/0, 1#6G, 2" C	150/2
-	-	EQ	-	5.80	7			9.80	8	4.00	SPACE	EQ	-	-
			SPACE	0.00	9				10	0.00	SPACE	EQ	-	-
			SPACE	0.00	11				12	0.00	SPACE	EQ	-	-
			SPACE	0.00	13	0.18			14	0.18	(P) 6160 GFI	R	2#12, 1#12G, 1/2" C	20/1
			SPACE	0.00	15				16	0.00	SPACE			
			SPACE	0.00	17				18	0.00	SPACE			
			SPACE	0.00	19				20	0.00	SPACE			
			SPACE	0.00	21				22	0.00	SPACE			
			SPACE	0.00	23				24	0.00	SPACE			

PHASE TOTAL 10.3 9.9 KVA

TOTAL CONNECTED LOAD	20.2 kVA	84 A
----------------------	----------	------

TOTAL DEMAND LOAD	20.2 kVA	84 A
-------------------	----------	------

LOAD TYPE	DESCRIPTION	CONN. LOAD		DEMAND FACTOR	DESIGN LOAD	
		KVA	AMPS		KVA	AMPS

DIRECTION
284 deg(T)

35.37980°N
078.82007°W

ACCURACY 10 m
DATUM WGS84

MAXIMUM CONTINUOUS LOADS ARE NOT TO EXCEED 80%
OF THE OVERCURRENT PROTECTIVE DEVICES SETTINGS
EMPLOYED IN OTHER THAN MOTOR CIRCUITS, EXCEPT
FOR THOSE CIRCUITS EMPLOYING CIRCUIT BREAKERS
MARKED AS SUITABLE FOR CONTINUOUS OPERATION AT
100% OF THE RATINGS.

RBS 6201 100 AMPS



2023-06-28
02:08:27-04:00

DIRECTION
287 deg(T)

35.37983°N
078.82010°W

ACCURACY 17 m
DATUM WGS84

EMERSON
Network Power

NetXtend PPC
Integrated Enclosure

ELECTRICAL RATING 120/240 VOLTS SINGLE PHASE 60HZ	
A.C. POWER	GENERATOR POWER
200 AMP	200 AMP
100 AMP	100 AMP
AMP	AMP

THIS SWITCHBOARD GENERATOR POWER CIRCUIT IS SUITABLE FOR USE ON A CIRCUIT CAPABLE OF DELIVERING NOT MORE THAN 10,000 RMS SYMMETRICAL AMPERES, 240 VOLTS MAXIMUM

SUITABLE FOR USE AS SERVICE EQUIPMENT

RAINFOOF TYPE 3R
UL FILE #E209771

DANGER
HAZARD OF ELECTRICAL SHOCK OR BURN.
TURN OFF POWER SUPPLYING THIS EQUIPMENT BEFORE WORKING INSIDE.

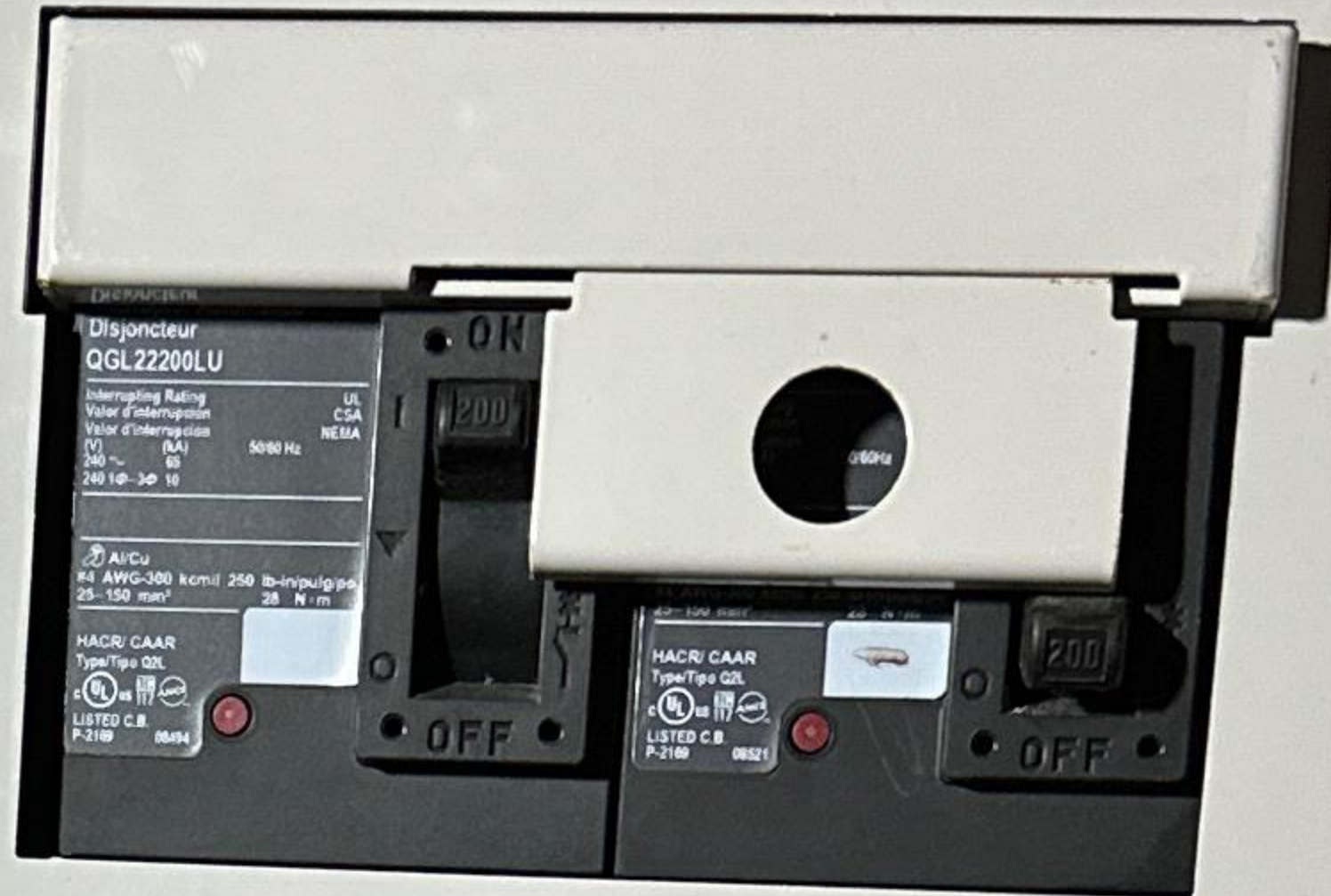
CAUTION!
THIS SWITCHBOARD MAY CONTAIN AN OPTIONAL TAP ON THE SERVICE SIDE OF THE MAIN POWER DISCONNECT FOR REMOTE MONITORING OF UTILITY AND/OR OPERATING POWER.

THIS SWITCHBOARD NORMAL POWER CIRCUIT IS SUITABLE FOR USE ON A CIRCUIT CAPABLE OF DELIVERING NOT MORE THAN 10,000 RMS SYMMETRICAL AMPERES, 240 VOLTS MAXIMUM WHEN EQUIPPED WITH:
LISTED MAIN CIRCUIT BREAKER TYPE QOU
RATED 100A OR 200A, 240V, 10KAIC,
OR LISTED CIRCUIT BREAKER TYPE QBL22100 OR QBL22200
RATED 100A OR 200A, 240V, 10KAIC
LISTED BRANCH BREAKERS TYPE QO
RATED 10-125A, 120/240V, 10KAIC

THIS SWITCHBOARD NORMAL POWER CIRCUIT IS SUITABLE FOR USE ON A CIRCUIT CAPABLE OF DELIVERING NOT MORE THAN 25,000 RMS SYMMETRICAL AMPERES, 240 VOLTS MAXIMUM WHEN EQUIPPED WITH:
LISTED MAIN CIRCUIT BREAKER TYPE QDL22100 OR QDL22200
RATED 100A OR 200A, 240V, 25KAIC,
LISTED BRANCH BREAKERS TYPE QO
RATED 10-125A, 120/240V, 10KAIC

THIS SWITCHBOARD NORMAL POWER CIRCUIT IS SUITABLE FOR USE ON A CIRCUIT CAPABLE OF DELIVERING NOT MORE THAN 65,000 RMS SYMMETRICAL AMPERES, 240 VOLTS MAXIMUM WHEN EQUIPPED WITH:
LISTED MAIN CIRCUIT BREAKER TYPE QGL22100 OR QGL22200
RATED 100A OR 200A, 240V, 65KAIC,
LISTED BRANCH BREAKERS TYPE QO
RATED 10-125A, 120/240V, 10KAIC

NORMAL AC POWER	ON	GENERATOR POWER
DISCONNECT	OFF	DISCONNECT



WARNING
TO REDUCE RISK OF ELECTRICAL SHOCK OR INJURY TO PERSONS, DISCONNECT ALL SOURCE OF SUPPLY BEFORE SERVICING

MECHANICAL INTERLOCK

THE SLIDE BAR MECHANICAL INTERLOCK TRANSFERS NORMAL POWER TO GENERATOR POWER.

THE SLIDE BAR MECHANICAL INTERLOCK PROHIBITS BOTH POWER SOURCES FROM BEING IN THE ON POSITION SIMULTANEOUSLY.

TO TRANSFER FROM ONE POWER SOURCE TO THE OTHER POWER SOURCE, SWITCH ONE BREAKER TO THE OFF POSITION AND THE OTHER TO THE ON POSITION.

PUSH - TO - TRIP

A RED PUSH - TO - TRIP BUTTON PROVIDES A MEANS TO MECHANICALLY TRIP THE CIRCUIT BREAKER. THIS ACTION EXERCISES THE TRIPPING PORTION OF THE MECHANISM AND ALLOWS MAINTENANCE CHECKS ON THE BREAKER.

THE OPERATING HANDLE ASSUMES A CENTER POSITION WHEN THE CIRCUIT BREAKER IS TRIPPED.

THE BREAKER CAN BE RESET BY OPERATING THE HANDLE TO THE EXTREME OFF POSITION AND THEN TO THE ON.

TRANSIENT VOLTAGE SURGE SUPPRESSION



TVSS STATUS INDICATORS
LED CONDITIONS STATUS
1. ALL LEDES ON GREEN 1. MAIN POWER ON AND SUPPRESSION FUNCTIONAL
2. ALL LEDES OFF 2. MAIN POWER OFF
3. ANY LEDES OFF OR RED 3. ONE OF MORE SUPPRESSION MODULES NOT FUNCTIONAL
IF CONDITIONS 2 OR 3 EXIST, CALL EMERSON NETWORK POWER

**FOR 24 HOUR SUPPORT CALL:
800-800-5260**

MAXIMUM CONTINUOUS LOADS ARE NOT TO EXCEED 80% OF THE OVERCURRENT PROTECTIVE DEVICE RATINGS EMPLOYED IN OTHER THAN MOTOR CIRCUITS, EXCEPT FOR THOSE CIRCUITS EMPLOYING CIRCUIT BREAKERS MARKED AS SUITABLE FOR CONTINUOUS OPERATION AT 100% OF THE RATINGS.



2023-06-28

02:08:22-04:00

DIRECTION
133 deg(T)

35.38422°N
078.82340°W

ACCURACY 3.56 km
DATUM WGS84



2023-06-28

02:08:16-04:00

DIRECTION
306 deg(T)

35.37990°N
078.82004°W

ACCURACY 9 m
DATUM WGS84



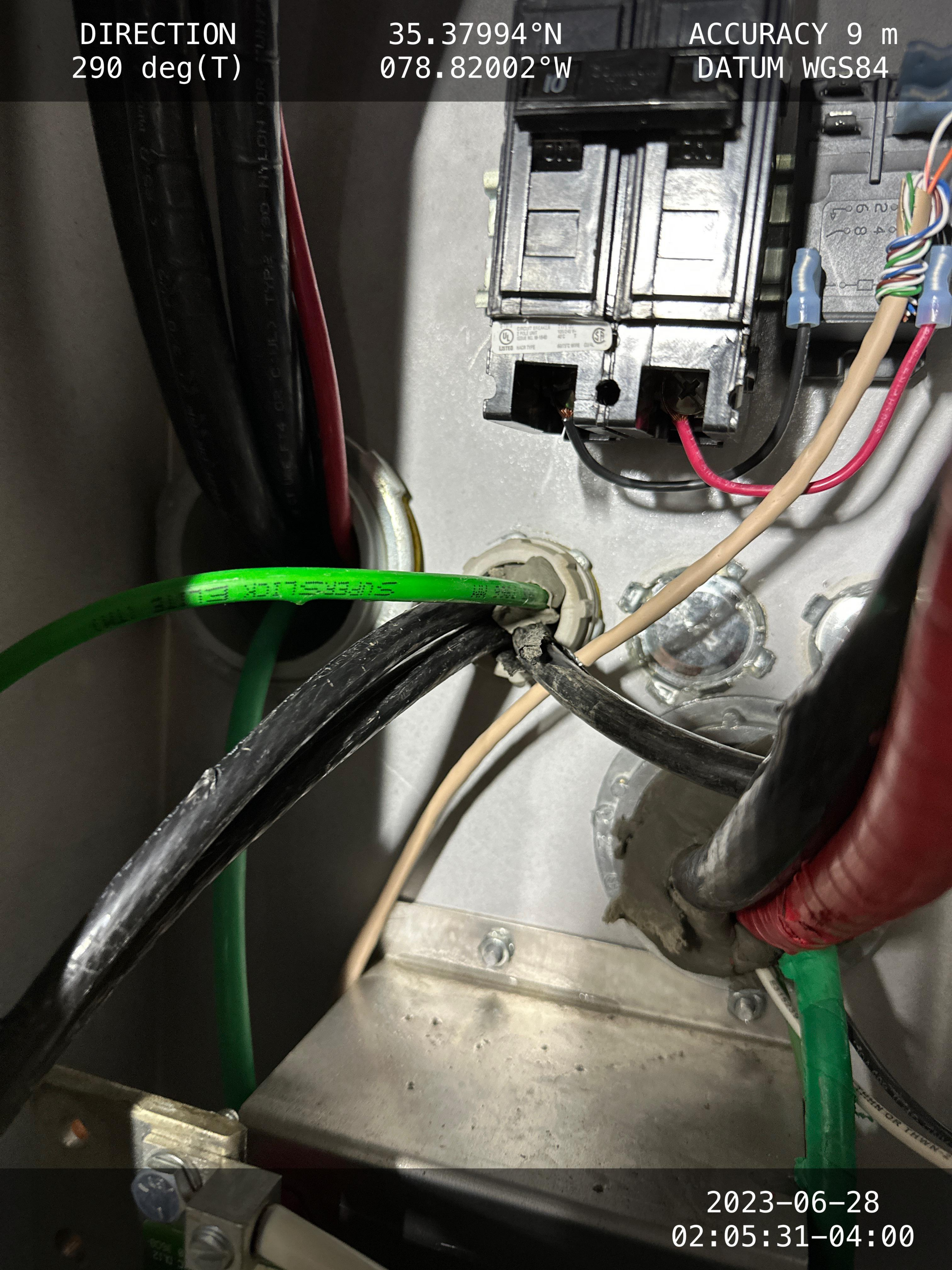
El incumplimiento de esta
instrucción podrá causar la muerte
o lesiones serias y daño al equipo.
Utilisez uniquement dans des
appareils monophasés appropriés
à ce produit. Si cette précaution
n'est pas respectée, cela
entraînera la mort ou des blessures
graves.

2023-06-28
02:05:32-04:00

DIRECTION
290 deg(T)

35.37994°N
078.82002°W

ACCURACY 9 m
DATUM WGS84



2023-06-28
02:05:31-04:00

DIRECTION
305 deg(T)

35.37989°N
078.82018°W

ACCURACY 72 m
DATUM WGS84

DANGER
ENERGIZED FROM
TRANSFER SWITCH
METER FEEDS
CIRCUIT REMAINS ENERGIZED
WHEN THIS PANEL IS IN A
POSITION

Disjoncteur
QGL22200LU
Interrupting Rating
Value d'interception
(kV) (A) 50/60 Hz
240 10-30 10
AICu
#1 AWG-300 kcmil 250 lb-in/pulg/ipo
25-150 mm²
25 N·m
HACR/CAAR
Type/Type QGL
LISTED C.B.
P-2108 0804

STATUS INDICATOR
NORTHERN TECHNOLOGIES, INC.
509-927-0401 800-727-9119
MODEL: 6M120V
SERVICE VOLTAGE: 120V RMS, 50/60Hz
SUPPRESSED VOLTAGE RATING: 400Vpk
Rev 1 0309 R
CUL US
MADE IN MEXICO

WARNING
This product is designed and tested by Square D to meet the requirements of the Underwriters Laboratories (UL) and other safety organizations. It is not intended for use in applications where the failure of the product could result in death, injury or property damage. The user must read and understand the instructions and warnings provided with this product. The user must also ensure that the product is installed and maintained in accordance with the instructions and warnings provided. The user must also ensure that the product is used in accordance with the instructions and warnings provided. The user must also ensure that the product is used in accordance with the instructions and warnings provided.

DANGER / PELIGRO / DANGER
PRECAUTION: EVITAR EL CONTACTO CON LAS PARTES CALIENTES DEL DISPOSITIVO.
PRECAUTION: EVITAR EL CONTACTO CON LAS PARTES CALIENTES DEL DISPOSITIVO.
PRECAUTION: EVITAR EL CONTACTO CON LAS PARTES CALIENTES DEL DISPOSITIVO.

2023-06-28
02:05:24-04:00