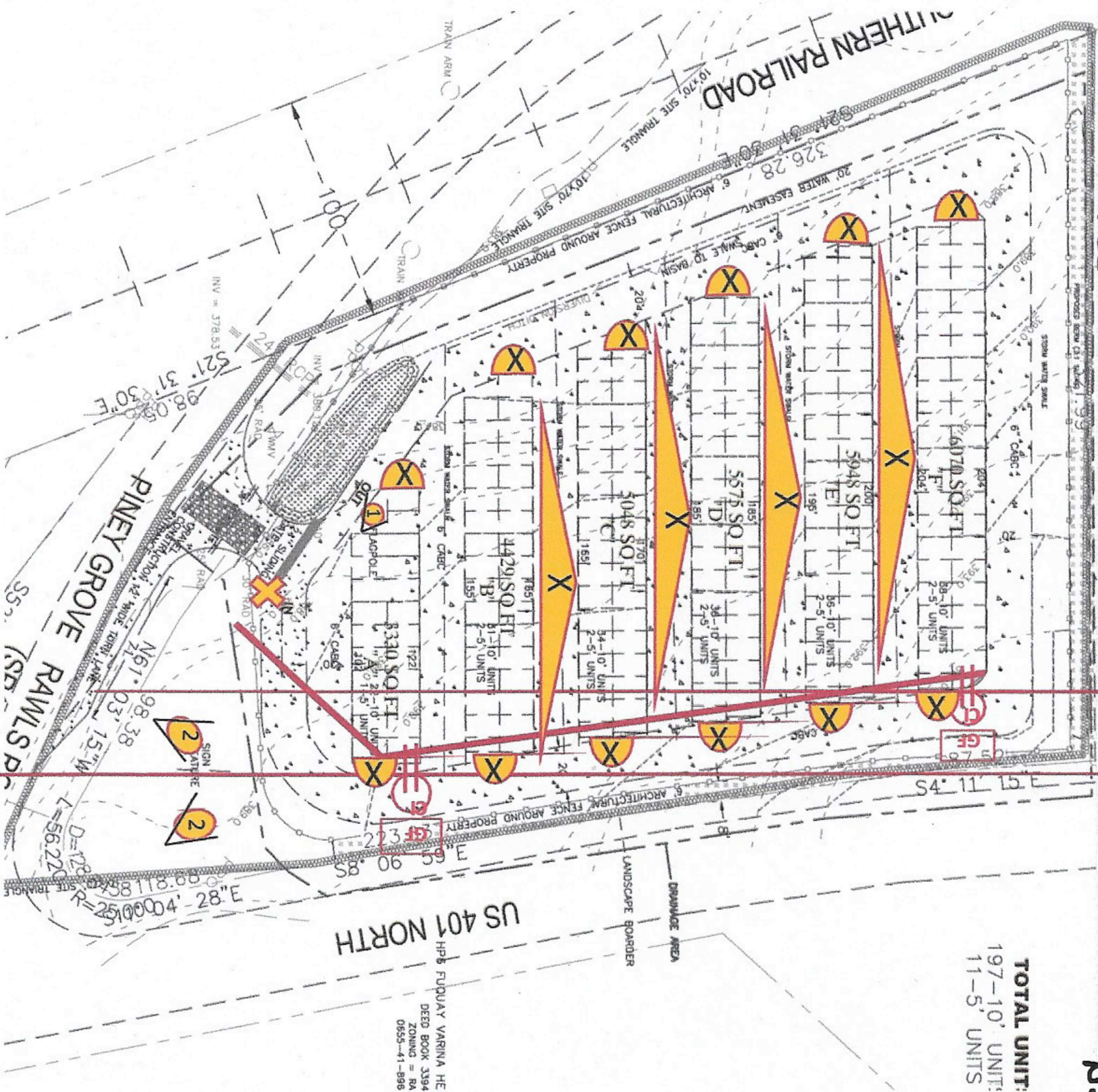


BRANDON LEE  
ELECTRIC

NOTE 1  
PLASTIC 10X10 T Box  
ON EACH END OF BUILDING  
REDUCE TO #12 FOR LIGHTS  
& RECEPTACLES



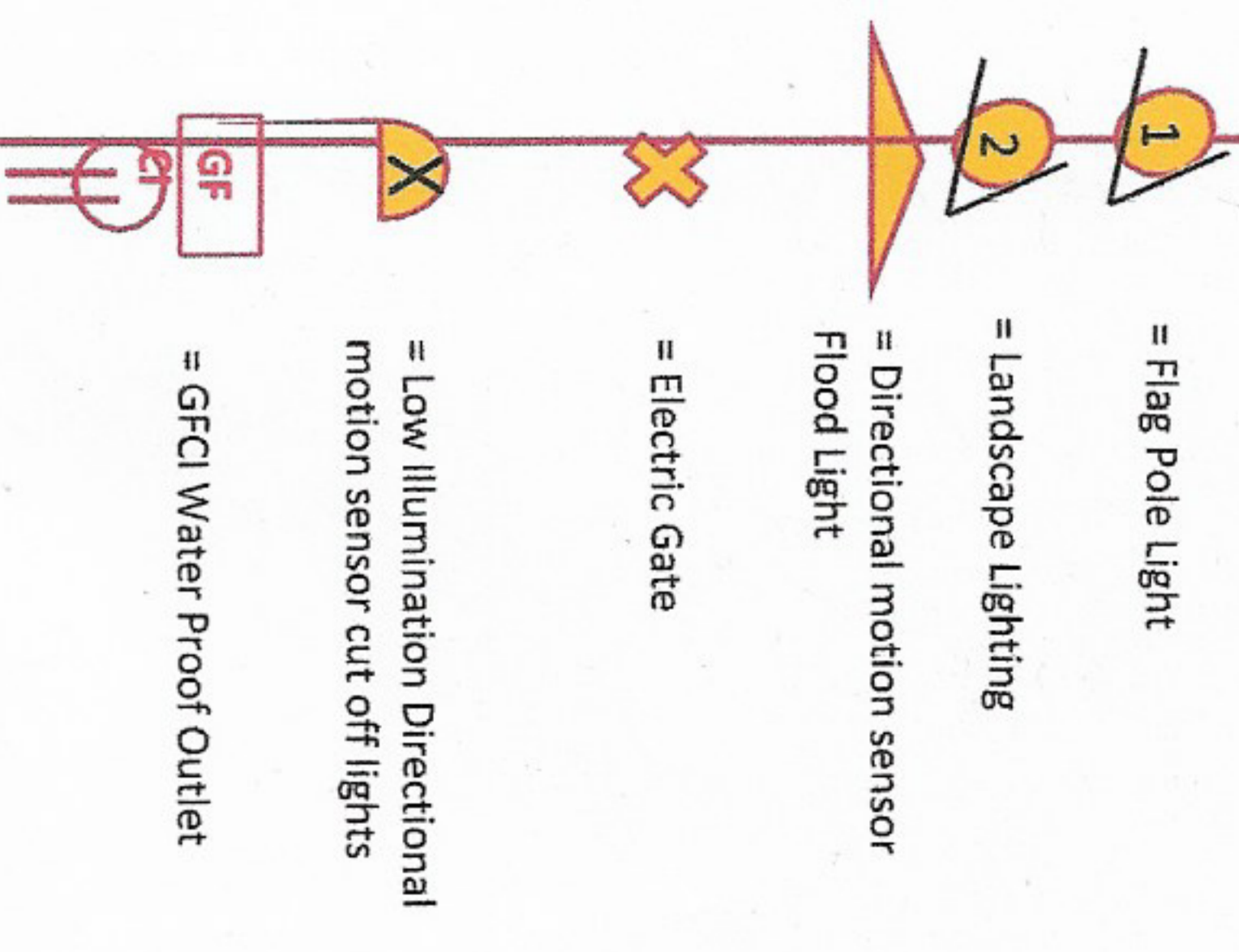
TOTAL UNIT:  
197-10' UNIT:  
11-5' UNITS

NOTE 3

DIRECT BURIAL # 8  
8/2 OF 10VOLT  
SIZED UP FOR  
VOLTAGE DROP

NOTE 4  
ALL LIGHTS  
LED FOR  
MINIMAL  
LOAD (AMPS)

NOTE 2  
Run LENGTH OF EACH  
BUILDING USING 12/2 MC  
CABLE



= Flag Pole Light  
= Landscape Lighting  
= Directional motion sensor Flood Light  
= Electric Gate  
= GFCI Water Proof Outlet  
= Low Illumination Directional motion sensor cut off lights