

ALLOWABLE HEIGHT		
	ALLOWABLE	SHOWN ON PLANS
Building Height in Feet (Table 504.3)		
Building Height in Stories (Table 504.4)		

* Provide code reference if the "Shown on Plans" quantity is not based on Table 504.3 or 504.4.

FIRE PROTECTION REQUIREMENTS							
BUILDING ELEMENT	FIRE SEPARATION DISTANCE (FEET)	RATING		DETAIL # AND SHEET #	DESIGN # FOR RATED ASSEMBLY	SHEET # FOR RATED PENETRATION	SHEET # FOR RATED JOINTS
		REQ'D	PROVIDED (w/ REDUCTION)				
Structural Frame, including columns, girders, trusses							
Bearing Walls							
Exterior							
North							
East							
West							
South							
Interior							
Nonbearing Walls and Partitions							
Exterior walls							
North							
East							
West							
South							
Interior walls and partitions							
Floor Construction							
Including supporting beams and joists							
Floor Ceiling Assembly							
Columns Supporting Floors							
Roof Construction, including supporting beams and joists							
Roof Ceiling Assembly							
Columns Supporting Roof							
Shaft Enclosures - Exit							
Shaft Enclosures - Other							
Corridor Separation							
Occupancy/Fire Barrier Separation							
Party/Fire Wall Separation							
Smoke Barrier Separation							
Smoke Partition							
Tenant/Dwelling Unit/Sleeping Unit Separation							
Incidental Use Separation							

* Indicate section number permitting reduction

ACCESSIBLE DWELLING UNITS (SECTION 1107)							
TOTAL UNITS	ACCESSIBLE UNITS REQUIRED	ACCESSIBLE UNITS PROVIDED	TYPE A UNITS REQUIRED	TYPE A UNITS PROVIDED	TYPE B UNITS REQUIRED	TYPE B UNITS PROVIDED	TOTAL ACCESSIBLE UNITS PROVIDED

ACCESSIBLE PARKING (SECTION 1106)					
LOT OR PARKING AREA	TOTAL # OF PARKING SPACES		# OF ACCESSIBLE SPACES		TOTAL # ACCESSIBLE PROVIDED
	REQUIRED	PROVIDED	REGULAR W/ 5' ACCESS	5' ACCESS	
TOTAL					

REQUIREMENTS (SECTION 1102.1)										
USE	SPACE	EXIST'G	NEW	REQ'D	LAVATORIES			SHOWERS /TUBS	DRINKING FOUNTAINS	
					MALE	FEMALE	UNISEX		REGULAR	ACCESSIBLE

SPECIAL APPROVALS

Special approval: (Local Jurisdiction, Department of Insurance, OSC, DPI, DHHS, etc., describe below)

PERCENTAGE OF WALL OPENING CALCULATIONS			
FIRE SEPARATION DISTANCE (FEET) FROM PROPERTY LINES	DEGREE OF OPENINGS PROTECTION (TABLE 705.8)	ALLOWABLE AREA (%)	ACTUAL SHOWN ON PLANS (%)

LIFE SAFETY SYSTEM REQUIREMENTS

Emergency Lighting: Yes No
 Exit Signs: Yes No
 Fire Alarm: Yes No
 Smoke Detection Systems: Yes No
 Carbon Monoxide Detection: Yes No

LIFE SAFETY PLAN REQUIREMENTS*

Life Safety Plan Sheet #: _____

Fire and/or smoke rated wall locations (Chapter 7)
 Assumed and real property line locations (if not)
 Exterior wall opening area with respect to
 Occupancy Use for each area as it relates to
 Occupant loads for each area
 Exit access travel distance
 Common path of travel
 Dead end lengths
 Clear exit widths for
 Maximum calculated occupant load
 Actual occupant load for each area
 A separate schematic plan is provided for each fire rated floor/ceiling and/or roof structure is provided for purposes of occupancy separation
 Location of doors with panic hardware (1010.1.10)
 Location of doors with delayed egress locks and the amount of delay (1010.1.9.7)
 Location of doors with electromagnetic egress locks (1010.1.9.9)
 Location of doors equipped with hold-open devices
 Location of emergency escape windows (1030)
 The square footage of each fire area (202)
 The square footage of each smoke compartment for Occupancy Classification I-2 (407.5)
 Note any code exceptions or table notes that may have been utilized regarding the items above

ENERGY SUMMARY

ENERGY REQUIREMENTS:
 The following data shall be considered minimum and any special attribute required to meet the energy code shall also be provided. Each Designer shall furnish the required portions of the project information for the plan data sheet. If performance method, state the annual energy cost for the standard reference design vs annual energy cost for the proposed design.

Existing building envelope complies with code: Select one

Exempt Building: Select one Provide code or statutory reference:

Climate Zone: Select one

Method of Compliance: Select one
 (If "Other" specify source here) _____

THERMAL ENVELOPE (Prescriptive method only)

Roof/ceiling Assembly (each assembly)
 Description of assembly: _____
 U-Value of total assembly: _____
 R-Value of insulation: _____
 Skylights in each assembly: _____
 U-Value of skylight: _____
 total square footage of skylights in each assembly: _____

Exterior Walls (each assembly)
 Description of assembly: _____
 U-Value of total assembly: _____
 R-Value of insulation: _____
 Openings (windows, doors, etc.): _____
 U-Value of opening: _____

Walls below grade
 Description of assembly: _____
 U-Value of total assembly: _____
 R-Value of insulation: _____

Floors over unconditioned space (each assembly)
 Description of assembly: _____
 U-Value of total assembly: _____
 R-Value of insulation: _____

Floors slab on grade
 Description of assembly: _____
 U-Value of total assembly: _____
 R-Value of insulation: _____
 Horizontal/vertical requirement: _____
 slab heated: _____



SBA COMMUNICATIONS CORP.
 5900 BROKEN SOUND PKWY NW
 BOCA RATON, FL 33487



P. MARSHALL & ASSOCIATES

LOCATION:
 1275 NC HWY-55
 COATS, NC 27521

SBA:
 NC02083-B
 COATS

T-MOBILE:
 5RA0169A
 COATS

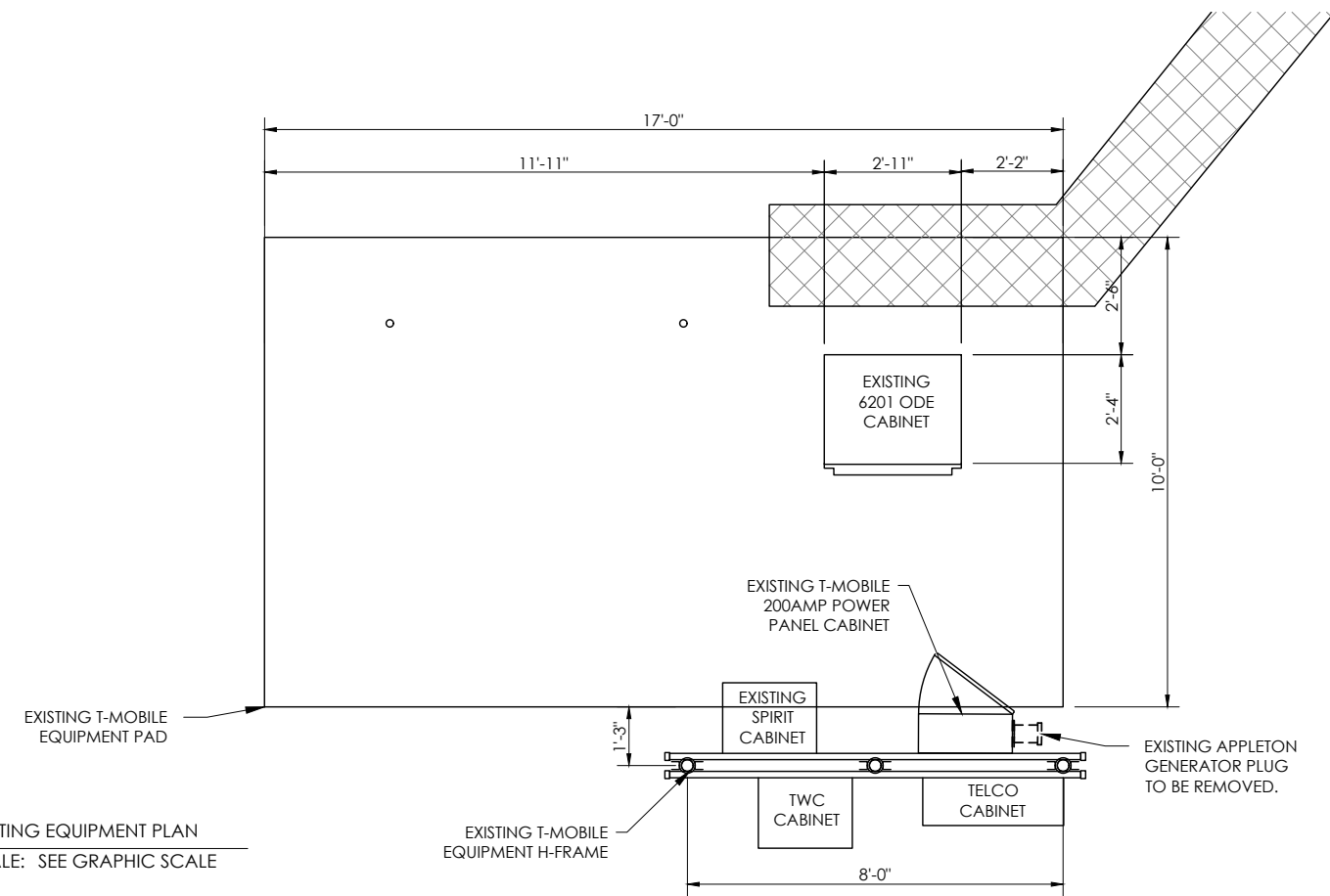
SITE TYPE:
 225' MONOPOLE

REV	DATE	DESCRIPTION
0	11/30/2020	FOR CONSTRUCTION

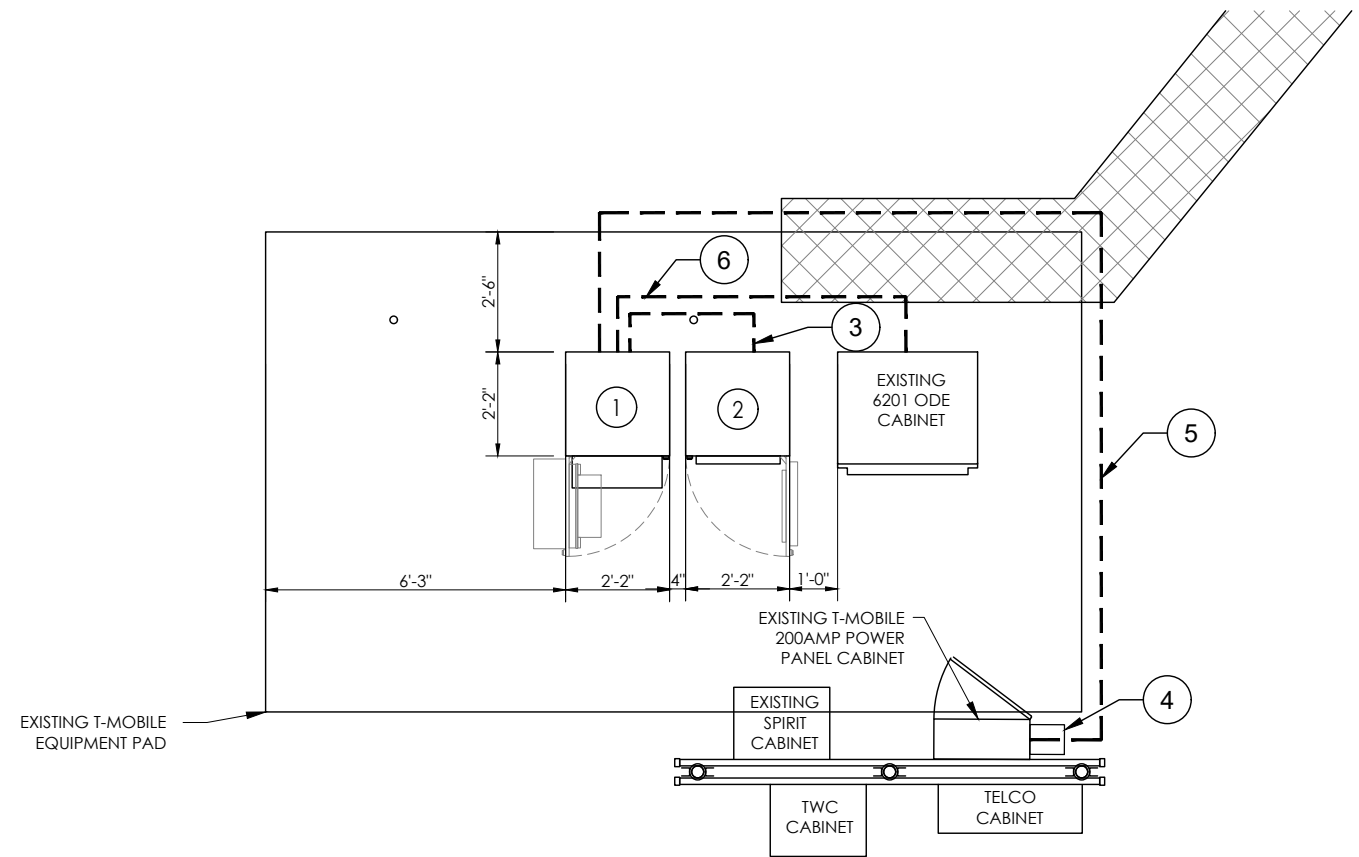
SITE COORDINATES
 LAT: 35.396714
 LONG: -78.668261

DRAWN: INS
 CHECKED: PWM
 JOB#: 20ASBTMMNC-0072

APPENDIX B



1 EXISTING EQUIPMENT PLAN
SCALE: SEE GRAPHIC SCALE



2 PROPOSED EQUIPMENT PLAN
SCALE: SEE GRAPHIC SCALE

GENERAL NOTES

1. PROPOSED ENCLOSURE 6160 CABINET ATTACHED TO PLATFORM AT EACH CORNER PER MANUFACTURER'S SPECIFICATIONS. GROUND CABINET WITH MECHANICAL 2-LUG CONNECTION & #2 TINNED SOLID COPPER IN 3/4" NON METALLIC FLEX. CONDUIT TO EXISTING EQ. GROUND (TYP)
2. PROPOSED ENCLOSURE B160 BATTERY CABINET PLATFORM AT EACH CORNER PER MANUFACTURER'S SPECIFICATIONS. GROUND CABINET WITH MECHANICAL 2-LUG CONNECTION & #2 TINNED SOLID COPPER IN 3/4" NON METALLIC FLEX. CONDUIT TO EXISTING EQ. GROUND. (TYP)
3. PROPOSED (2) 3" PVC SCH. 80 RIGID CONDUIT WITH PULLSTRINGS FROM PROPOSED ENCLOSURE 6160 CABINET TO PROPOSED ENCLOSURE B160 BATTERY CABINET.
4. EXISTING PPC CABINET ATTACHED TO EXISTING H-FRAME. REMOVE EXISTING APPLE-TON GENERATOR PLUG & INSTALL PROPOSED CAM-LOC GENERATOR PLUG. MAINTAIN 36"x48" CLEARANCE IN FRONT OF PANEL. GROUND PER MANUFACTURER DETAILS.
5. PROPOSED (1) 3" PVC SCH. 80 NONFLEX CONDUIT WITH FROM EXISTING PPC TO PROPOSED ENCLOSURE 6160 CABINET.
6. PROPOSED (1) 3" PVC SCH. 80 NONFLEX CONDUIT WITH PULLSTRINGS FROM EXISTING EQUIPMENT CABINET TO PROPOSED ENCLOSURE 6160 CABINET.

EQUIPMENT NOTE

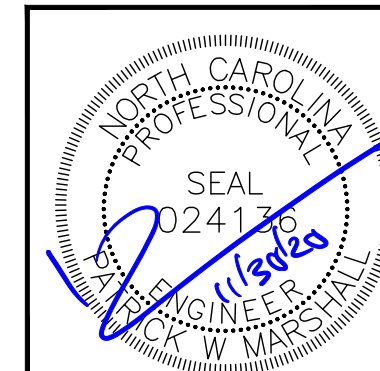
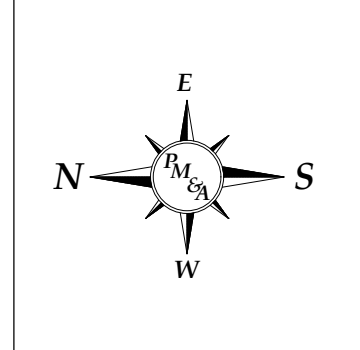
THE CABINETS ARE CONSTRUCTED OF NONCOMBUSTIBLE MATERIALS TO MEET THE REQUIREMENTS OF THE CURRENT NFPA 37 EDITION 2018. CABINET CONSTRUCTION THAT PASSED A SIMULATED BRUSH FIRE TEST TO DEMONSTRATE COMPLIANCE TO TELCORDIA GR-487-CORE SECTION 3.39 FIRE RESISTANCE REQUIREMENT R3-265. REFER TO THE NATIONAL TECHNICAL SYSTEMS (NTS) REPORT NO. PR067628-GR487.

GRAPHIC SCALE

SITE PLAN



NORTH ARROW



T-Mobile



SBA COMMUNICATIONS CORP.
5900 BROKEN SOUND PKWY NW
BOCA RATON, FL 33487



P. MARSHALL & ASSOCIATES

LOCATION:

1275 NC HWY-55
COATS, NC 27521

SBA:

NC02083-B

COATS

T-MOBILE:

5RA0169A
COATS

SITE TYPE:

225' MONOPOLE

REV	DATE	DESCRIPTION
0	11/30/2020	FOR CONSTRUCTION

SITE COORDINATES

LAT: 35.396714

LONG: -78.668261

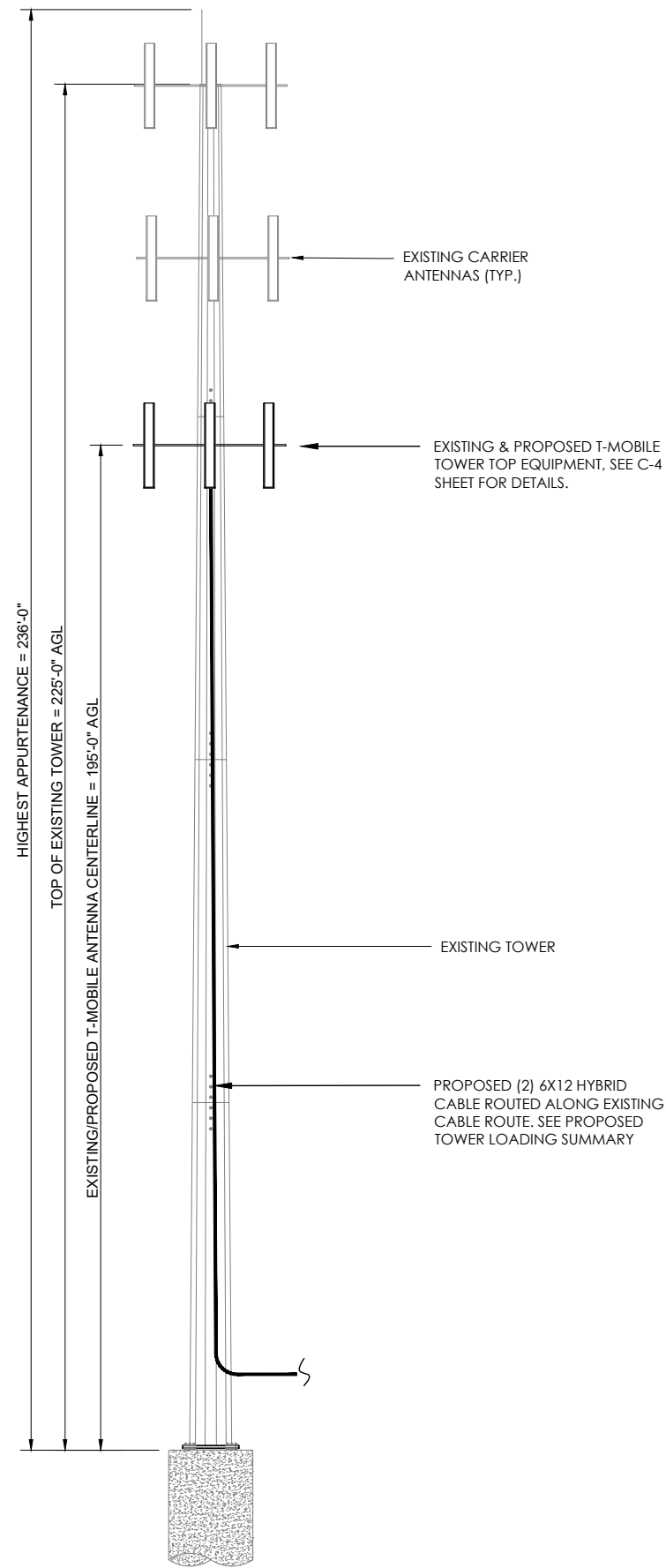
DRAWN: INS

CHECKED: PWM

JOB#: 20ASBTMMNC-0072

EQUIPMENT PLAN

C-2



TOWER ELEVATION
NOT TO SCALE

GENERAL NOTES

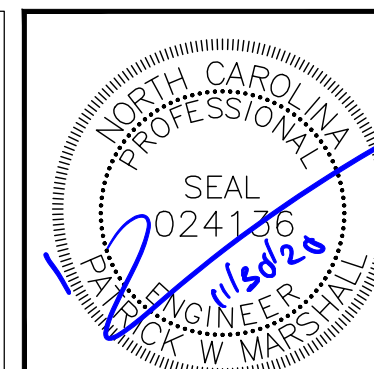
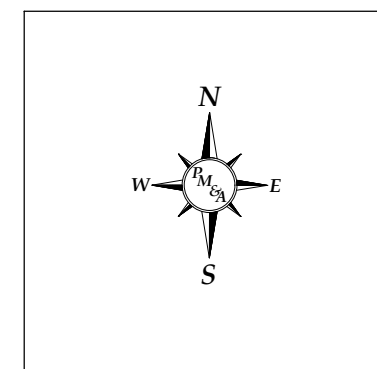
1. PM&A HAS NOT PERFORMED A TOWER STRUCTURAL ANALYSIS FOR THIS PROJECT. REFER TO TOWER STRUCTURAL ANALYSIS BY OTHERS FOR PROPOSED ANTENNA CABLE LOADING DETAILS
2. TOWER ELEVATION SHOWN IS NOT DRAWN TO SCALE AND IS ONLY INTENDED FOR REFERENCE PURPOSES. REFER TO ORIGINAL TOWER DESIGN FOR ADDITIONAL INFORMATION.
3. ALL TOWER DIMENSIONS SHALL BE VERIFIED WITH THE PLANS PRIOR TO COMMENCING CONSTRUCTION. NOTIFY THE ENGINEER IMMEDIATELY IF ANY DISCREPANCIES ARE DISCOVERED.
4. ALL HARDWARE ASSEMBLY MANUFACTURER'S INSTRUCTIONS SHALL BE FOLLOWED EXACTLY AND SHALL SUPERSEDE ANY CONFLICTING NOTES ENCLOSED HEREIN.
5. ALL MATERIALS AND EQUIPMENT FURNISHED SHALL BE NEW AND OF GOOD QUALITY, FREE FROM FAULTS AND DEFECTS AND IN CONFORMANCE WITH THE CONTRACT DOCUMENTS. ANY AND ALL SUBSTITUTIONS MUST BE PROPERLY APPROVED AND AUTHORIZED IN WRITING BY THE OWNER AND ENGINEER PRIOR TO INSTALLATION. CONTRACTOR SHALL FURNISH SATISFACTORY EVIDENCE AS TO THE KIND OF QUALITY OF THE MATERIALS AND EQUIPMENT BEING SUBSTITUTED.
6. CONTRACTOR TO REFER TO THE MOUNT ANALYSIS FOR THIS PROJECT.

FINISH NOTES:

TOWER-	GALVANIZED PAINTED RED & WHITE
TOWER MOUNTS-	GALVANIZED PAINTED WHITE
ANTENNA-	NEUTRAL (MANUFACTURER FINISH)
FOUNDATIONS-	UNPAINTED CONCRETE
ICE BRIDGE-	GALVANIZED
CABLES-	BLACK
BASE CABINETS/EQUIPMENT-	NEUTRAL (MANUFACTURER FINISH)

TOWER LOADING SUMMARY

EXISTING	REMOVE	EQUIPMENT	ADD	TOTAL
6	3	ANTENNA	6	9
3	0	TMA	0	0
3	0	RADIOS	6	9
6	2	COAX	0	4
1	0	HYBRIDS	2	3



SBA COMMUNICATIONS CORP.
5900 BROKEN SOUND PKWY NW
BOCA RATON, FL 33487



LOCATION:

1275 NC HWY-55
COATS, NC 27521

SBA:

NC02083-B

COATS

T-MOBILE:

5RA0169A
COATS

SITE TYPE:

225' MONOPOLE

REV	DATE	DESCRIPTION
0	11/30/2020	FOR CONSTRUCTION

SITE COORDINATES

LAT: 35.396714
LONG: -78.668261

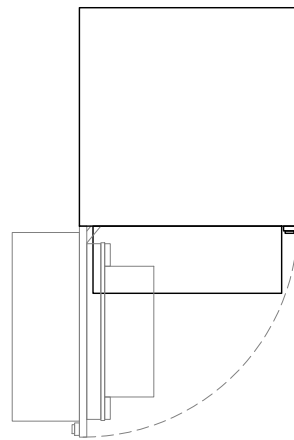
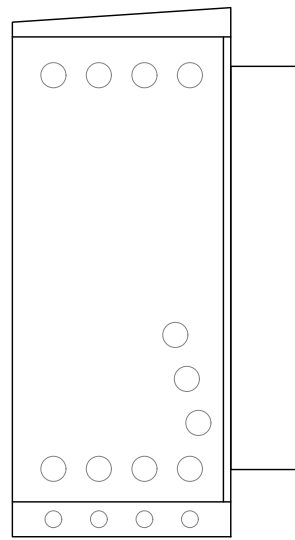
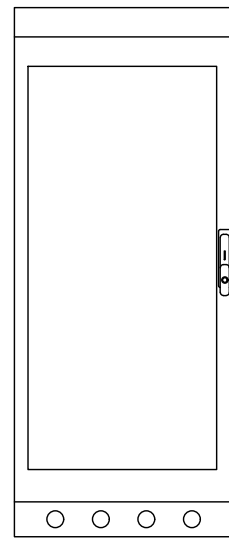
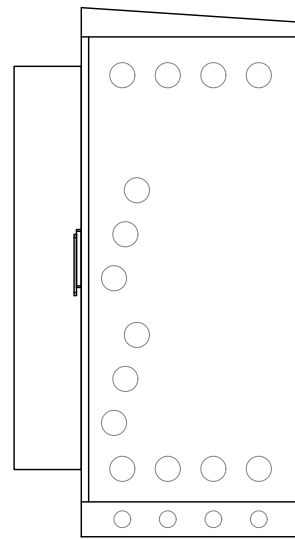
DRAWN: INS

CHECKED: PWM

JOB#: 20ASBTMMNC-0072

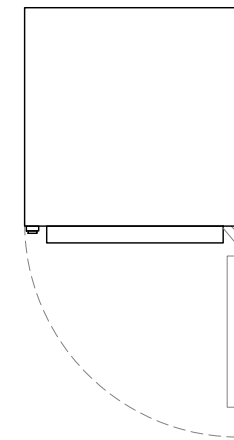
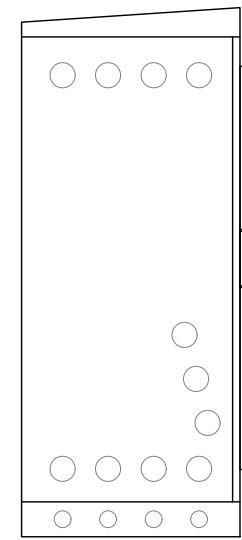
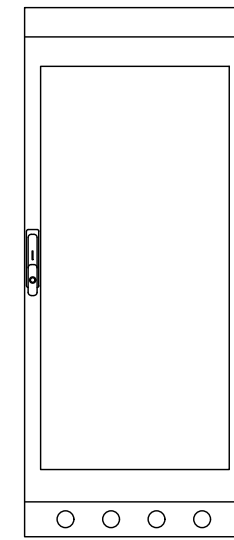
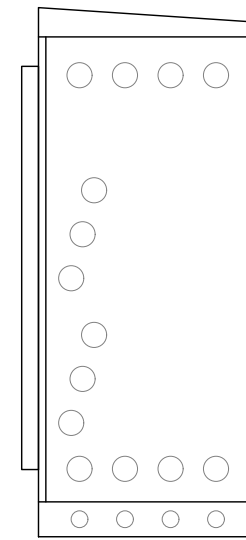
TOWER ELEVATION

C-3



ERICSSON 6160 SSC
WEIGHT: 320 LBS.
SIZE (HxWxD): 63"x26.0"x26.0" IN.

1 ERICSSON 6160 SSC
SCALE: NOT TO SCALE



ERICSSON B160 BATTERY CABINET
SIZE (HxWxD): 63"x26.0"x26.0" IN.

2 ERICSSON B160 BATTERY CABINET
SCALE: NOT TO SCALE

T-Mobile



SBA COMMUNICATIONS CORP.
5900 BROKEN SOUND PKWY NW
BOCA RATON, FL 33487

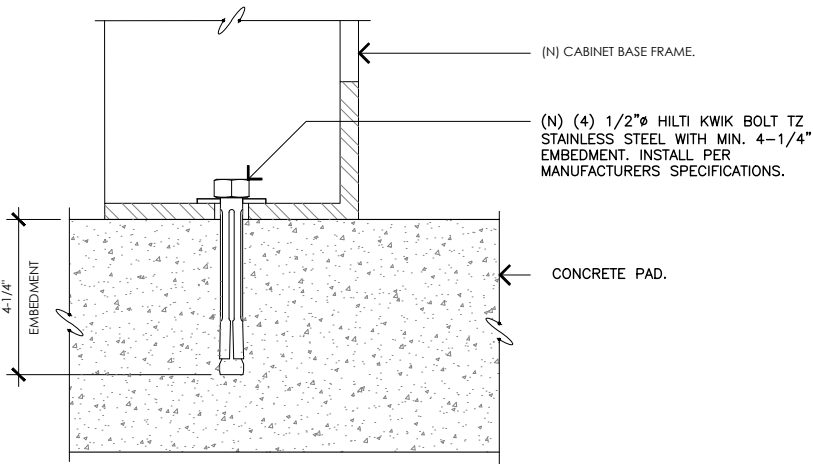


LOCATION:
1275 NC HWY-55
COATS, NC 27521
SBA:
NC02083-B
COATS
T-MOBILE:
5RA0169A
COATS
SITE TYPE:
225' MONOPOLE

REV	DATE	DESCRIPTION
0	11/30/2020	FOR CONSTRUCTION

SITE COORDINATES
LAT: 35.396714
LONG: -78.668261

DRAWN: INS
CHECKED: PWM
JOB#: 20ASBTMMNC-0072



3 CABINET ANCHORAGE DETAIL
SCALE: NOT TO SCALE

Coax Color Coding

- Antennas will be labeled (back of antenna view) right to left 1 - X ports
- Coax/jumper lines will be identified by sector color and by number of bands around the coax/jumper

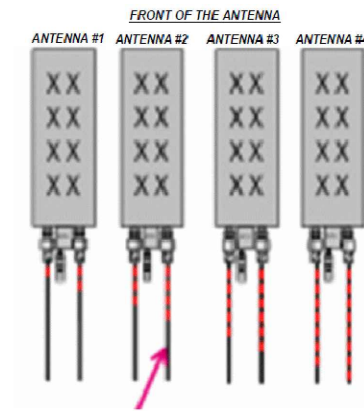
SECTOR A	RED
SECTOR B	GREEN
SECTOR C	BLUE
SECTOR D	YELLOW
SECTOR E	WHITE
SECTOR F	PURPLE
LMU	BROWN + SECTOR COLOR BANDS (1 & 2)
FIBER ID	GRAY
UNUSED COAX	PINK
MICROWAVE	ORANGE
DWE T-1'S + GPS DOWNLINK CABLE	ID W/LABEL MAKER

COLOR CODING NOTES:

color	GSM
color	UMTS 1900
color	UMTS AWS
color	LTE
color	FIBER CABLE

METALLIC TAG NOTES:

- TWO METALLIC TAGS SHALL BE ATTACHED AT EACH END OF EVERY CABLE LONGER THAN (3) THREE FEET
- CABLE LESS THAN (3) THREE FEET WILL HAVE TWO METALLIC TAGS ATTACHED AT THE CENTER OF THE CABLE
- TAGS WILL BE FASTENED WITH STAINLESS STEEL ZIP TIES APPROPRIATE FOR CABLE DIAMETER
- STANDARDIZED METALLIC TAG KIT WILL BE ASSEMBLED WITH TAGS ALREADY ENGRAVED TO ACCOMMODATE ALL CONFIGURATIONS.

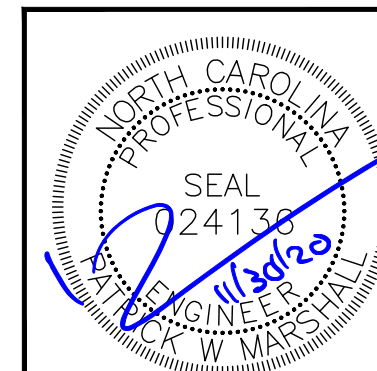


EXAMPLE: COAX WITH FOUR BANDS OF RED TAPE WILL REPRESENT ALPHA SECTOR AND THE 4TH PORT OF ANTENNA

ANTENNA AND COAXIAL CABLE SCHEDULE

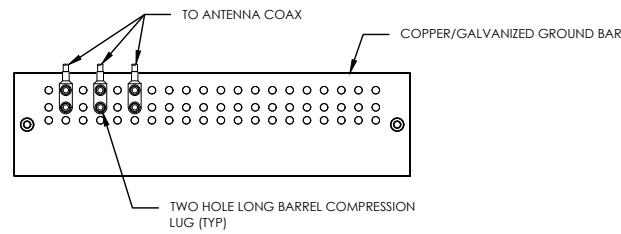
- ALL ANTENNAS SHALL BE FURNISHED WITH DOWNTILT BRACKETS. CONTRACTOR SHALL COORDINATE REQUIRED MECHANICAL DOWNTILT FOR EACH ANTENNA WITH RF ENGINEER. ANTENNA DOWNTILT SHALL BE SET AND VERIFIED BY A SMART LEVEL.
- CONTRACTOR SHALL INSTALL COLOR CODE RINGS ON EACH OF THE HYBRID CABLES AND JUMPER CABLES WITH UV RESISTANT TAPE. ALL CABLE SHALL BE MARKED AT TOP AND BOTTOM WITH 2" COLOR TAPE OR STENCIL TAG. COLOR TAPE MAY BE OBTAINED FROM GRAYBAR ELECTRONICS.

4 COAX COLOR CODING
SCALE: NOT TO SCALE



EQUIPMENT SPECS

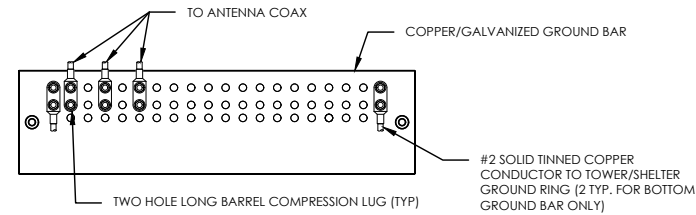
C-6



NOTES:

1. DOUBLING UP "OR STACKING" OF CONNECTIONS IS NOT PERMITTED.
2. EXTERIOR ANTIOXIDANT JOINT COMPOUND TO BE USED ON ALL EXTERIOR CONNECTIONS.
3. GROUND BAR SHALL NOT BE ISOLATED FROM TOWER. MOUNT DIRECTLY TO TOWER STEEL.

1 ANTENNA GROUND BAR DETAIL
SCALE: NOT TO SCALE

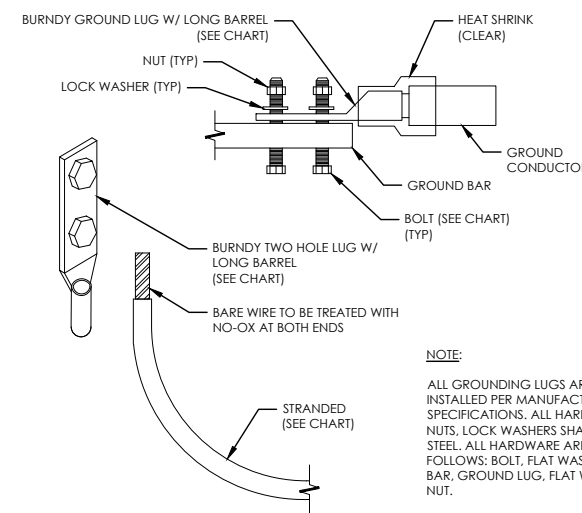


NOTES:

1. EXTERIOR ANTIOXIDANT JOINT COMPOUND TO BE USED ON ALL EXTERIOR CONNECTIONS.
2. GROUND BAR SHALL NOT BE ISOLATED FROM TOWER. MOUNT DIRECTLY TO TOWER STEEL (TOWER ONLY).
3. GROUND BAR SHALL BE ISOLATED FROM BUILDING OR SHELTER.

2 TOWER/SHELTER GROUND BAR DETAIL
SCALE: NOT TO SCALE

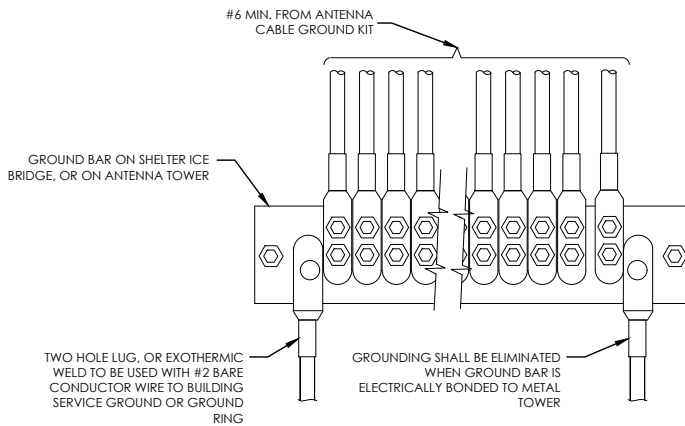
WIRE SIZE	BURNDY LUG	BOLT SIZE
#6 GREEN INSULATED	YA6C-2TC38	3/8" - 16 NC SS 2 BOLT
#2 SOLID TINNED	YA3C-2TC38	3/8" - 16 NC SS 2 BOLT
#2 STRANDED	YA2C-2TC38	3/8" - 16 NC SS 2 BOLT
#2/0 STRANDED	YA26-2TC38	3/8" - 16 NC SS 2 BOLT
#4/0 STRANDED	YA28-2N	1/2" - 16 NC SS 2 BOLT



NOTE:

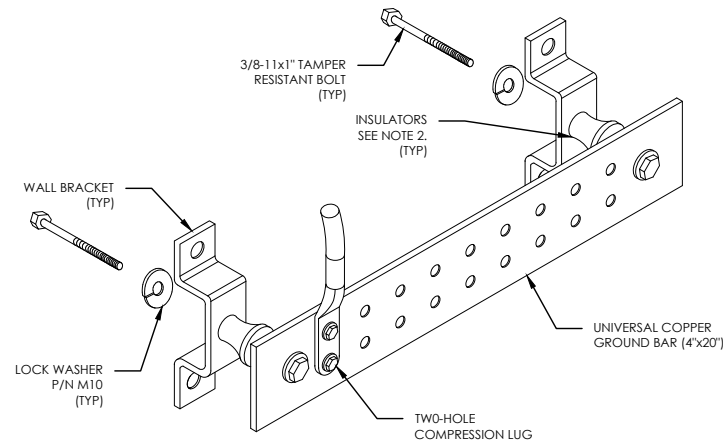
ALL GROUNDING LUGS ARE TO BE INSTALLED PER MANUFACTURER'S SPECIFICATIONS. ALL HARDWARE BOLTS, NUTS, LOCK WASHERS SHALL BE STAINLESS STEEL. ALL HARDWARE ARE TO BE AS FOLLOWS: BOLT, FLAT WASHER, GROUND BAR, GROUND LUG, FLAT WASHER AND NUT.

3 MECHANICAL LUG CONNECTION
SCALE: NOT TO SCALE



GROUNDING SHALL BE ELIMINATED WHEN GROUND BAR IS ELECTRICALLY BONDED TO METAL TOWER

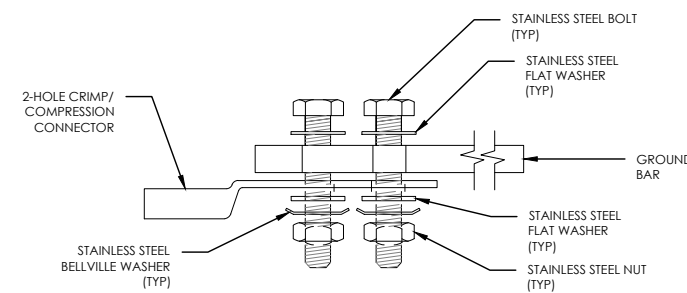
4 GROUNDWIRE INSTALLATION
SCALE: NOT TO SCALE



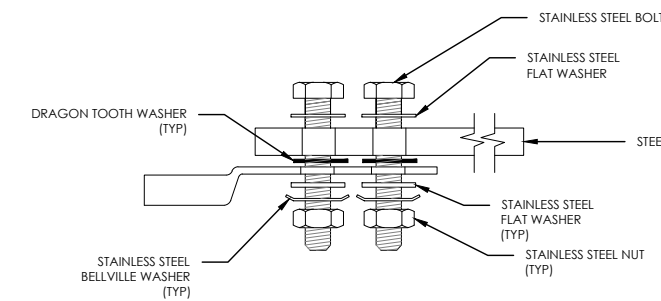
NOTES:

1. DOWN LEAD (HOME RUN) CONDUCTORS ARE NOT TO BE INSTALLED ON CROWN CASTLE USA INC. TOWER, PER THE GROUNDING DOWN CONDUCTOR POLICY QAS-STD-10091. NO MODIFICATION OR DRILLING TO TOWER STEEL IS ALLOWED IN ANY FORM OR FASHION. CAD-WELDING ON THE TOWER AND/OR IN THE AIR ARE NOT PERMITTED.
2. OMIT INSULATOR WHEN MOUNTING TO TOWER STEEL OR PLATFORM STEEL. USE INSULATORS WHEN ATTACHING TO BUILDING OR SHELTERS.

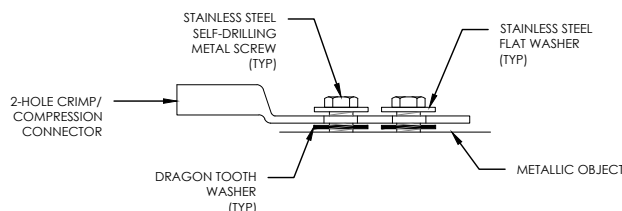
5 GROUND BAR DETAIL
SCALE: NOT TO SCALE



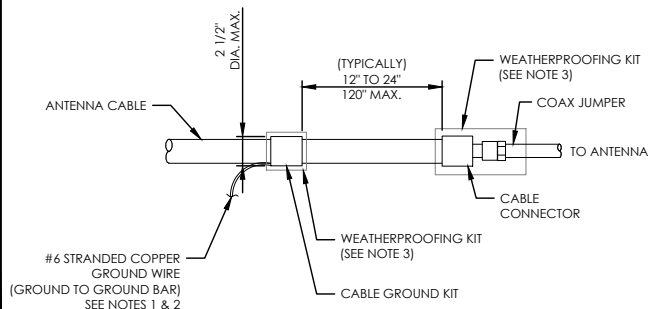
SINGLE CONNECTOR AT GROUND BARS



SINGLE CONNECTOR AT STEEL OBJECTS



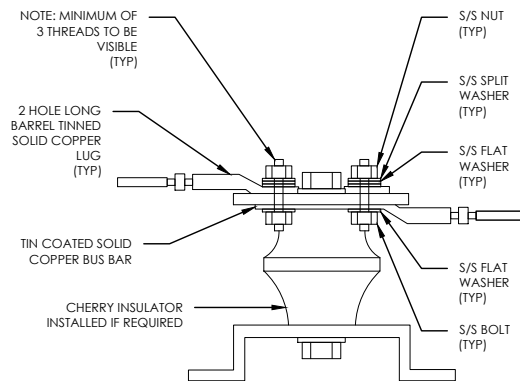
SINGLE CONNECTOR AT METALLIC/STEEL OBJECTS



NOTES:

1. DO NOT INSTALL CABLE GROUND KIT AT A BEND AND ALWAYS DIRECT GROUND WIRE DOWN TO GROUND BAR.
2. GROUNDING KIT SHALL BE TYPE AND PART NUMBER AS SUPPLIED OR RECOMMENDED BY CABLE MANUFACTURER.
3. WEATHER PROOFING SHALL BE TWO-PART TAPE KIT, COLD SHRINK SHALL NOT BE USED.

6 CABLE GROUND KIT CONNECTION
SCALE: NOT TO SCALE



7 LUG DETAIL
SCALE: NOT TO SCALE

8 HARDWARE DETAIL FOR EXTERIOR CONNECTIONS
SCALE: NOT TO SCALE

T-Mobile



SBA COMMUNICATIONS CORP.
5900 BROKEN SOUND PKWY NW
BOCA RATON, FL 33487



LOCATION:

1275 NC HWY-55
COATS, NC 27521

SBA:

NC02083-B

COATS

T-MOBILE:

5RA0169A
COATS

SITE TYPE:

225' MONOPOLE

REV	DATE	DESCRIPTION
0	11/30/2020	FOR CONSTRUCTION

SITE COORDINATES

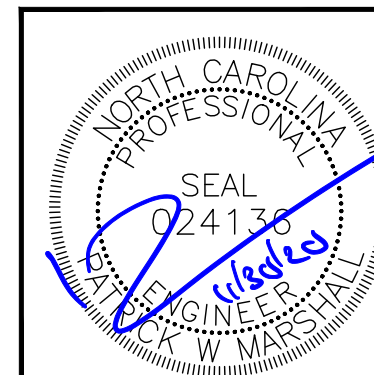
LAT: 35.396714

LONG: -78.668261

DRAWN: INS

CHECKED: PWM

JOB#: 20ASBTMMNC-0072



GROUNDING
DETAILS

E-3