

# LTE 3C CONSTRUCTION DRAWINGS



AT&T SITE ID: 368-355 TOWER OWNER ID: NC02083-B FA LOCATION: 10034555

SITE ADDRESS:  
1275 NC 55 EAST  
COATS, NC 27521  
(HARNETT COUNTY)

### SITE SUMMARY

SITE TYPE: CO-LOCATION  
TYPE OF OCCUPANCY: TELECOMMUNICATIONS  
TOWER TYPE: MONOPOLE  
TOWER LATITUDE: 35° 23' 48.190" N (38.397)  
TOWER LONGITUDE: 78° 40' 5.730" W (-78.668)  
ZONING JURISDICTION: HARNETT COUNTY  
COUNTY: HARNETT  
PARCEL NUMBER: 0599-88-877  
POWER COMPANY: DUKES ENERGY (800) 777-9898  
TELEPHONE COMPANY: CENTURYLINK (888) 723-8010

### PROJECT DIRECTORY

TOWER OWNER: SBA  
8051 CONGRESS AVE  
BOCA RATON, FL 33487  
PHONE: (800) 487-7483

APPLICANT: AT&T MOBILITY CORP.  
2002 PEGAH CHURCH ROAD, SUITE 300  
GREENSBORO, NC 27455  
PHONE: (800) 838-2822

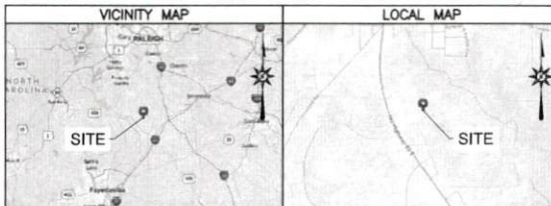
SITE DESIGNER: FDH INFRASTRUCTURE SERVICES, LLC  
8521 MERIDEN DRIVE  
RALEIGH, NC 27616  
CONTACT: DAMARIS SQUIRES  
PHONE: (919) 755-1012



UNDERGROUND  
SERVICE ALERT

811

48 HOURS BEFORE YOU DIG



### DIRECTIONS TO THE SITE

FROM GREENSBORO, NC:  
START OUT GOING SOUTHWEST ON PEGAH CHURCH RD TOWARD LANSDALE DR. TAKE THE 1ST LEFT ONTO LANSDALE DR.  
LANSDALE DR BECOMES BATTLEGROUND AVE/US-220 S. MERGE ONTO W WINDOVER AVE E/US-220 S. TAKE ARNOLD  
ST/US-220 S TOWARD US-29 S/HIGH POINT/US-70/US-220 S. MERGE ONTO N OHENRY BLVD S/US-70 W/US-29  
S/US-220 S VIA THE RAMP ON THE LEFT TOWARD HIGH POINT TAKE THE MARTIN LUTHER KING JR DR/US-85 N EXIT ON THE  
LEFT TOWARD SANFORD. TURN LEFT ONTO MARTIN LUTHER KING JR DR. MARTIN LUTHER KING JR DR BECOMES J.M. HUNT JR  
EXPY. J.M. HUNT JR EXPY BECOMES US-421 S. MERGE ONTO US-421 S VIA EXIT 143A TOWARD LILLINGTON. TURN LEFT ONTO  
S MAIN ST/US-421 S/US-401 N/NC-27/NC-210. TURN RIGHT ONTO E CORNELIUS HARNETT BLVD/US-421 S/NC-27. TURN  
LEFT ONTO LESLIE CAMPBELL AVE. PASS THROUGH 2 ROUNDABOUTS. LESLIE CAMPBELL AVE BECOMES NC-27. TURN RIGHT  
ONTO N MCKINLEY ST/NC-55. SITE IS ON THE LEFT.

### CODE COMPLIANCE

ALL WORK AND MATERIALS SHALL BE PERFORMED AND INSTALLED IN ACCORDANCE WITH THE CURRENT EDITIONS OF THE FOLLOWING CODES AS ADOPTED BY THE LOCAL GOVERNING AUTHORITIES. NOTHING IN THESE PLANS IS TO BE CONSTRUED TO PERMIT WORK NOT CONFORMING TO THE LATEST EDITIONS OF THE FOLLOWING:

- 2018 NC BUILDING CODE
- ANS/TIA-222-G
- LOCAL BUILDING CODE
- CITY/COUNTY ORDINANCES
- FAA COMPLIANCE
- FCC COMPLIANCE
- 2017 NEC CODE WITH NC AMENDMENTS
- 2018 NC FIRE PREVENTION CODE
- 2018 NC MECHANICAL CODE
- 2018 NC EXISTING BUILDING CODE

### PROJECT DESCRIPTION

- REMOVE (3) ANTENNAS
- REMOVE (3) RRUS
- INSTALL (3) RRUS

### SHEET INDEX

SHEET NO.	DESCRIPTION	REV. NO.	REVISION DATE
T-1	TITLE SHEET	0	04/25/19
BC-1	APPENDIX B	0	04/25/19
G-1	NOTES	0	04/25/19
C-1	EQUIPMENT LAYOUT PLANS	0	04/25/19
C-2	TOWER ELEVATION & ANTENNA LAYOUT PLANS	0	04/25/19
C-3	LEASED/EXISTING RF EQUIPMENT SCHEDULES	0	04/25/19
C-4	FINAL RF EQUIPMENT SCHEDULES	0	04/25/19
E-1	SINGLE LINE DIAGRAM	0	04/25/19
E-2	RISER DIAGRAM	0	04/25/19

### GENERAL NOTES

THE FACILITY IS UNMANNED AND NOT FOR HUMAN HABITATION. THEREFORE HANDICAP ACCESS IS NOT REQUIRED. A TECHNICIAN WILL VISIT THE SITE AS REQUIRED FOR ROUTINE MAINTENANCE. THE PROJECT WILL NOT RESULT IN ANY SIGNIFICANT DISTURBANCE OR EFFECT ON DRAINAGE. NO SANITARY SEWER SERVICE, POTABLE WATER, OR TRASH DISPOSAL IS REQUIRED AND NO COMMERCIAL SIGNAGE IS PROPOSED.



04/25/19  
FDH ENGINEERING, PLLC  
0348P-1390  
KRISTYN M. PEREZ, PE  
NORTH CAROLINA LICENSE NO. 037993

SUBMITTALS			
DATE	DESCRIPTION	REV	ISSUED BY
04/25/19	CONSTRUCTION	0	DRS

THE INFORMATION CONTAINED IN THIS SET OF DOCUMENTS IS PROPRIETARY TO SBA. REPRODUCTION OR FAILURE TO BE REPRODUCED THE WHOLE OR ANY PART OF THESE DRAWINGS WITHOUT THE PERMISSION OF FDH INFRASTRUCTURE SERVICES IS PROHIBITED.

AT&T SITE ID:  
368-355  
SITE ADDRESS:  
1275 NC 55 EAST  
COATS, NC 27521  
FA LOCATION:  
10034555  
TOWER OWNER ID:  
NC02083-B

SHEET TITLE:  
TITLE SHEET  
SHEET NUMBER:  
T-1

### 2018 APPENDIX B BUILDING CODE SUMMARY FOR ALL COMMERCIAL PROJECTS

(PROVIDE ON THE STRUCTURAL SHEETS IF APPLICABLE)

Project Name: \_\_\_\_\_  
 Address: 1234 N. 5th St., Raleigh, NC  
 Owner: ABC COMPANY, Inc.  
 Date: 01/15/19

#### PERMITS & REGULATIONS

Fire Department  
 Health Department  
 Other: \_\_\_\_\_

#### GENERAL INFORMATION

Project Type:  New Construction  Alteration  Other: \_\_\_\_\_  
 Occupancy:  Office  Retail  Industrial  Other: \_\_\_\_\_  
 Construction Method:  Cast-in-place  Precast concrete  Other: \_\_\_\_\_  
 Foundation:  Slab-on-grade  Other: \_\_\_\_\_

#### MECHANICAL SYSTEMS

MECHANICAL SYSTEMS (Check all that apply):  
 Heating  Cooling  Ventilation  Air Conditioning  Exhaust  Other: \_\_\_\_\_  
 Heating System:  Furnace  Boiler  Heat Pump  Other: \_\_\_\_\_  
 Cooling System:  Air Conditioner  Heat Exchanger  Other: \_\_\_\_\_

#### ELECTRICAL SYSTEMS

ELECTRICAL SYSTEMS (Check all that apply):  
 Lighting  Power  Communications  Other: \_\_\_\_\_  
 Lighting:  Incandescent  Fluorescent  LED  Other: \_\_\_\_\_  
 Power:  120V  240V  Other: \_\_\_\_\_

#### PLUMBING SYSTEMS

PLUMBING SYSTEMS (Check all that apply):  
 Sanitary  Storm  Other: \_\_\_\_\_  
 Sanitary:  Toilet  Sink  Shower  Other: \_\_\_\_\_  
 Storm:  Downspout  Other: \_\_\_\_\_

#### FIRE PROTECTION SYSTEMS

FIRE PROTECTION SYSTEMS (Check all that apply):  
 Fire Alarm  Sprinkler  Other: \_\_\_\_\_  
 Fire Alarm:  Manual  Automatic  Other: \_\_\_\_\_  
 Sprinkler:  Wet  Dry  Other: \_\_\_\_\_

#### ENERGY EFFICIENCY

ENERGY EFFICIENCY (Check all that apply):  
 Energy Star  LEED  Other: \_\_\_\_\_  
 Energy Star:  Yes  No  Other: \_\_\_\_\_  
 LEED:  LEED-NC  LEED-CS  Other: \_\_\_\_\_

#### ALLOWABLE HEIGHTS

Building Height	Building Area	Building Type	Allowable Height
1-3 stories	10,000 sq ft	Office	120 feet
4-6 stories	20,000 sq ft	Office	150 feet
7-9 stories	30,000 sq ft	Office	180 feet
10-12 stories	40,000 sq ft	Office	210 feet

#### FIRE PROTECTION REQUIREMENTS

System	Requirement	Compliance
Fire Alarm	Automatic alarm system	Yes
Sprinkler	Wet/dry/deluge system	Yes
Fire Escape	Approved fire escape	Yes
Fire Door	Approved fire door	Yes
Fire Partition	Approved fire partition	Yes
Fire Stair	Approved fire stair	Yes
Fire Exit	Approved fire exit	Yes
Fire Alarm	Approved fire alarm	Yes
Fire Sprinkler	Approved fire sprinkler	Yes
Fire Escape	Approved fire escape	Yes
Fire Door	Approved fire door	Yes
Fire Partition	Approved fire partition	Yes
Fire Stair	Approved fire stair	Yes
Fire Exit	Approved fire exit	Yes

#### MECHANICAL SYSTEMS

System	Requirement	Compliance
Heating	Approved heating system	Yes
Cooling	Approved cooling system	Yes
Ventilation	Approved ventilation system	Yes
Air Conditioning	Approved air conditioning system	Yes
Exhaust	Approved exhaust system	Yes

#### ELECTRICAL SYSTEMS

System	Requirement	Compliance
Lighting	Approved lighting system	Yes
Power	Approved power system	Yes
Communications	Approved communications system	Yes
Other	Approved other system	Yes

#### PLUMBING SYSTEMS

System	Requirement	Compliance
Sanitary	Approved sanitary system	Yes
Storm	Approved storm system	Yes

#### FIRE PROTECTION SYSTEMS

System	Requirement	Compliance
Fire Alarm	Approved fire alarm system	Yes
Sprinkler	Approved fire sprinkler system	Yes
Fire Escape	Approved fire escape system	Yes
Fire Door	Approved fire door system	Yes
Fire Partition	Approved fire partition system	Yes
Fire Stair	Approved fire stair system	Yes
Fire Exit	Approved fire exit system	Yes

#### ENERGY EFFICIENCY

System	Requirement	Compliance
Energy Star	Approved energy star system	Yes
LEED	Approved LEED system	Yes

#### MECHANICAL SYSTEMS

System	Requirement	Compliance
Heating	Approved heating system	Yes
Cooling	Approved cooling system	Yes
Ventilation	Approved ventilation system	Yes
Air Conditioning	Approved air conditioning system	Yes
Exhaust	Approved exhaust system	Yes

#### ELECTRICAL SYSTEMS

System	Requirement	Compliance
Lighting	Approved lighting system	Yes
Power	Approved power system	Yes
Communications	Approved communications system	Yes
Other	Approved other system	Yes

#### PLUMBING SYSTEMS

System	Requirement	Compliance
Sanitary	Approved sanitary system	Yes
Storm	Approved storm system	Yes

#### FIRE PROTECTION SYSTEMS

System	Requirement	Compliance
Fire Alarm	Approved fire alarm system	Yes
Sprinkler	Approved fire sprinkler system	Yes
Fire Escape	Approved fire escape system	Yes
Fire Door	Approved fire door system	Yes
Fire Partition	Approved fire partition system	Yes
Fire Stair	Approved fire stair system	Yes
Fire Exit	Approved fire exit system	Yes

#### ENERGY EFFICIENCY

System	Requirement	Compliance
Energy Star	Approved energy star system	Yes
LEED	Approved LEED system	Yes

#### MECHANICAL SYSTEMS

System	Requirement	Compliance
Heating	Approved heating system	Yes
Cooling	Approved cooling system	Yes
Ventilation	Approved ventilation system	Yes
Air Conditioning	Approved air conditioning system	Yes
Exhaust	Approved exhaust system	Yes

#### ELECTRICAL SYSTEMS

System	Requirement	Compliance
Lighting	Approved lighting system	Yes
Power	Approved power system	Yes
Communications	Approved communications system	Yes
Other	Approved other system	Yes

#### PLUMBING SYSTEMS


System	Requirement	Compliance
Sanitary	Approved sanitary system	Yes
Storm	Approved storm system	Yes

#### FIRE PROTECTION SYSTEMS



System	Requirement	Compliance
Fire Alarm	Approved fire alarm system	Yes
Sprinkler	Approved fire sprinkler system	Yes
Fire Escape	Approved fire escape system	Yes
Fire Door	Approved fire door system	Yes
Fire Partition	Approved fire partition system	Yes
Fire Stair	Approved fire stair system	Yes
Fire Exit	Approved fire exit system	Yes

#### ENERGY EFFICIENCY


System	Requirement	Compliance
Energy Star	Approved energy star system	Yes
LEED	Approved LEED system	Yes



8051 CONGRESS AVE  
BOCA RATON, FL 33487  
(800) 487-7483

1001 S. WINDY HOLLOW LN.  
FISHERS, NC 27539  
PHONE 919-287-0272 FAX 919-287-1851



037993  
ENGINEER  
KRISTYN M. PEREZ

04/25/19

FDH ENGINEERING, PLLC  
COAF-1390  
KRISTYN M. PEREZ, PE  
NORTH CAROLINA LICENSE NO. 037993  
DRAWN BY: NLR  
CHECKED BY: DRS  
APPROVED BY: KMP

SUBMITTALS		
DATE	DESCRIPTION	REV. ISSUED BY
04/25/19	CONSTRUCTION	0 DRS

THE INFORMATION CONTAINED IN THIS SET OF DOCUMENTS IS PROPRIETARY BY NATURE. REPRODUCTION OR FABRICATION OF THIS INFORMATION WITHOUT THE PERMISSION OF FDH ENGINEERING, PLLC IS PROHIBITED.

AT&T SITE ID: 368-355  
 SITE ADDRESS: 1275 NC 55 EAST COATS, NC 27621  
 FA LOCATION: 10034555  
 TOWER OWNER ID: NCD2083-B  
 SHEET TITLE: APPENDIX B-BUILDING CODE SUMMARY  
 SHEET NUMBER: BC-1

**GENERAL NOTES:**

- EVERY EFFORT HAS BEEN MADE IN THE CONSTRUCTION DOCUMENTS TO PROVIDE A COMPLETE SCOPE OF WORK. MINOR DISCREPANCIES IN THE DRAWINGS AND/OR SPECIFICATIONS SHALL NOT EXCUSE CONTRACTORS FROM COMPLETING THE PROJECT AND IMPROVEMENTS IN ACCORDANCE WITH THE INTENT OF THESE DOCUMENTS.
- BIDDING REQUIREMENTS**
  - PRIOR TO THE SUBMISSION OF BIDS, VISIT THE JOB SITE TO BECOME FAMILIAR WITH ALL CONDITIONS AFFECTING THE PROPOSED PROJECT. VISIT THE SITE WITH THE CONSTRUCTION DOCUMENTS TO VERIFY FIELD DIMENSIONS AND CONDITIONS TO CONFIRM THAT THE PROJECT WILL BE ACCOMPLISHED AS SHOWN.
  - PROVIDE NOTIFICATION TO OWNER'S REPRESENTATIVE IN WRITING OF ANY CONFLICTS, ERRORS, OR OMISSIONS PRIOR TO SUBMISSION OF PRICE PROPOSAL. IN THE EVENT OF DISCREPANCIES, PRICE THE MORE COSTLY OR EXTENSIVE WORK, UNLESS DIRECTED OTHERWISE.
  - WHEN TOWER IS OWNED BY A THIRD PARTY, CONTACT TOWER OWNER REPRESENTATIVE FOR PARTICIPATION IN BID WAIVER.
  - WHERE ANCHORING TO A CONCRETE ROOF SLAB, CONFIRM (PRIOR TO SUBMITTING BID) THE PRESENCE OF POST-TENSION TENDONS. INCLUDE PROVISIONS FOR X-RAY PROCEDURES TO LOCATE THE TENDONS PRIOR TO CONSTRUCTION.
- DRAWINGS ARE NOT TO BE SCALED. WRITTEN DIMENSIONS TAKE PRECEDENCE. CONSTRUCTION DOCUMENTS ARE INTENDED FOR DIAGRAMMATIC PURPOSES ONLY. UNO.
- FURNISH ALL MATERIALS, EQUIPMENT, LABOR, AND ANY REQUIREMENTS NECESSARY TO COMPLETE PROJECT AS DESCRIBED IN THE CONSTRUCTION DOCUMENTS.
- SUPERVISE AND DIRECT THE PROJECT DESCRIBED IN THE CONSTRUCTION DOCUMENTS. PROVIDE ALL CONSTRUCTION MEANS, METHODS, TECHNIQUES, SEQUENCES, AND PROCEDURES FOR COORDINATING ALL PORTIONS OF THE WORK UNDER THE CONTRACT.
- ALL WORK PERFORMED ON THE PROJECT AND MATERIALS INSTALLED SHALL BE IN STRICT ACCORDANCE WITH ALL APPLICABLE CODES, REGULATIONS, AND ORDINANCES. GIVE ALL NOTICES AND COMPLY WITH ALL LAWS, ORDINANCES, RULES, REGULATIONS AND LAWFUL ORDERS OF ANY PUBLIC AUTHORITY, MUNICIPAL, AND UTILITY COMPANY SPECIFICATIONS, AND LOCAL AND STATE JURISDICTIONAL CODES APPLICABLE TO THE WORK.
- CONSTRUCTION COORDINATION REQUIREMENTS
  - NOTIFY OWNER'S REPRESENTATIVE OF ANY DISCREPANCIES PRIOR TO START OF WORK.
  - OBTAIN ALL PERMITS. SCHEDULE AND COORDINATE ALL INSPECTIONS.
  - PROVIDE, AT THE PROJECT SITE, A FULL, CURRENT SET OF CONSTRUCTION DOCUMENTS FOR USE BY ALL PERSONNEL INVOLVED WITH THE PROJECT.
  - RECEIVE WRITTEN AUTHORIZATION TO PROCEED WITH CONSTRUCTION PRIOR TO STARTING WORK ON ANY ITEM NOT CLEARLY DEFINED BY THE CONSTRUCTION DOCUMENTS.
  - PERFORM WORK DURING OWNER'S PREFERRED HOURS TO AVOID DISTURBING NORMAL BUSINESS.
    - PROVIDE FALL PROTECTION IN ACCORDANCE WITH FEDERAL, STATE, LOCAL, AND OWNER REQUIREMENTS.
    - IF FAA LIGHTING AND MARKING IS PRESENT ON SITE AND IS POWERED BY ELECTRICAL SERVICE THAT IS TO BE INTERRUPTED, MAINTAIN THE NECESSARY LIGHTS DURING CONSTRUCTION AND NOTIFY THE PROPER AUTHORITIES IN THE EVENT OF A DISRUPTION.
    - PROVIDE A PORTABLE FIRE EXTINGUISHER WITH A RATING OF NOT LESS THAN 2-A OR 2-A10BC WITHIN 75 FEET TRAVEL DISTANCE TO ALL PORTIONS OF PROJECT AREA DURING CONSTRUCTION.
  - STRUCTURAL COMPONENTS OF ADJACENT FACILITIES SHALL NOT BE ALTERED BY THIS CONSTRUCTION PROJECT. UNO. ENSURE THAT EXCAVATION DOES NOT AFFECT ADJACENT STRUCTURES.
  - SEAL ALL PENETRATIONS THROUGH FIRE-RATED AREAS WITH U.L. LISTED OR FIRE MARSHALL-APPROVED MATERIALS, IF APPLICABLE.
  - BURIED UTILITIES MAY EXIST IN THE AREA AND UTILITY INFORMATION SHOWN MAY NOT BE COMPLETE. CONTACT THE UTILITY LOCATE SERVICE A MINIMUM OF 48 HOURS PRIOR TO CONSTRUCTION.
  - COORDINATE ALL POWER INSTALLATION WITH POWER COMPANY AS REQUIRED. REPORT POWER INSTALLATION COORDINATION SOLUTION(S) TO OWNER'S REPRESENTATIVE.
  - PROTECT EXISTING IMPROVEMENTS, EASEMENTS, PAVING, CURBING, ETC. DURING CONSTRUCTION. UPON COMPLETION OF WORK, REPAIR ANY DAMAGE THAT MAY HAVE OCCURRED DUE TO CONSTRUCTION ON OR ABOUT THE PROPERTY.
  - KEEP GENERAL WORK AREA CLEAN AND HAZARD FREE DURING CONSTRUCTION AND DISPOSE OF ALL DIRT, DEBRIS, AND RUBBISH. REMOVE EQUIPMENT NOT SPECIFIED AS REMAINING ON THE PROPERTY OR PREMISES. SITE SHALL BE LEFT IN CLEAN CONDITION AND FREE FROM PAINT SPOTS, DUST, OR SMOGUES OF ANY NATURE.
  - MAINTAIN THE INTEGRITY OF THE BUILDING ENVELOPE AND CONSTRUCT BARRIERS IN THE AREA OF WORK TO PREVENT DAMAGE FROM WEATHER AS WELL AS FROM CONSTRUCTION DUST AND DEBRIS.
- INSTALL ALL EQUIPMENT AND MATERIALS ACCORDING TO MANUFACTURER'S SPECIFICATIONS, UNO, OR WHERE LOCAL CODES OR ORDINANCES DIRECT OTHERWISE.

- ANY SUBSTITUTIONS OF MATERIALS AND/OR EQUIPMENT, MUST BE APPROVED BY OWNER'S REPRESENTATIVE.
- DOCUMENT ALL CHANGES MADE IN THE FIELD BY MARKING UP THE APPROVED CONSTRUCTION DRAWINGS AND SUBMITTING THE REDLINED SET TO OWNER'S REPRESENTATIVE UPON COMPLETION. DOCUMENT ALL WORK PERFORMED WITH PHOTOGRAPHS TO BE SUBMITTED WITH REDLINED CONSTRUCTION DRAWINGS.
- PROVIDE SUPPORTS FOR CABLES TO THE ELEVATION OF ALL INITIAL AND FUTURE ANTENNAS IN ACCORDANCE WITH ALL MANUFACTURER'S REQUIREMENTS.
- A STRUCTURAL ANALYSIS AND A MOUNT ANALYSIS (IF REQUIRED) TO DETERMINE THE STRUCTURAL CAPACITY TO SUPPORT THIS PROPOSED EQUIPMENT WAS PERFORMED OUTSIDE THE SCOPE OF THIS PROJECT.
- CONFIRM THAT THE REQUIREMENTS OF THE STRUCTURAL ANALYSIS, MOUNT ANALYSIS AND ANY ASSOCIATED MODIFICATIONS HAVE BEEN FOLLOWED AND COMPLETED AS REQUIRED TO SUPPORT THE EQUIPMENT ASSOCIATED WITH THIS PROJECT.

**SPECIAL INSPECTIONS:**

- WHEN REQUIRED, PROVIDE SPECIAL INSPECTIONS PERFORMED BY AN INDEPENDENT INSPECTOR, APPROVED BY OWNER'S REPRESENTATIVE AND THE LOCAL JURISDICTION.
- THE SPECIAL INSPECTOR SHALL PROVIDE A COPY OF THE REPORT TO THE OWNER'S REPRESENTATIVE, STRUCTURAL ENGINEER, CONTRACTOR, AND BUILDING OFFICIAL.

**ABBREVIATIONS**

A/C	AIR CONDITIONING	LBS	POUNDS
AFF	ABOVE FINISHED FLOOR	LTE	LONG TERM EVOLUTION
AGL	ABOVE GROUND LEVEL	MAX	MAXIMUM
AGL	ABOVE GRADE LEVEL	MECH	MECHANICAL
AWS	ADVANCED WIRELESS SERVICE	MTL	METAL
BBU	BATTERY BACKUP UNIT	MFR	MANUFACTURE
BLDG	BUILDING	MGR	MANAGER
BLK	BLOCKING	MIN	MINIMUM
CLG	CEILING	MISC	MISCELLANEOUS
CLR	CLEAR	NA	NOT APPLICABLE
CONC	CONCRETE	NIC	NOT IN CONTRACT
CONT	CONTINUOUS	NO	NUMBER
D	DEPTH	NTS	NOT TO SCALE
DBL	DOUBLE	OC	ON CENTER
DEG	DEGREE	OD	OUTSIDE DIAMETER
Ø, DIA	DIAMETER	PCS	PERSONAL COMMUNICATION SERVICE
DIAG	DIAGONAL	FDU	POWER DISTRIBUTION UNIT
DN	DOWN	PROJ	PROJECT
DET	DETAIL	PROP	PROPERTY
DWG	DRAWING	PT	PRESSURE TREATED
E	EXISTING	PVC	POLYVINYL CHLORIDE
EA	EACH	REQ	REQUIRED
ELEV, EL	ELEVATION	RF	RADIO FREQUENCY
ELEC	ELECTRICAL	RM	ROOM
EQ	EQUAL	RO	ROUGH OPENING
EQUIP	EQUIPMENT	RRH	REMOTE RADIO HEAD
EXT	EXTERIOR	SHT	SHEET
FF	FIBER INTERFACE FRAME	SIM	SIMILAR
FF	FACILITY INTERFACE FRAME	SPEC	SPECIFICATION
FLOR	FLOURESCENT	SF	SQUARE FOOT
FLR	FLOOR	SS	STAINLESS STEEL
FT	FOOT, FEET	STL	STEEL
GA	GAUGE	SUSP	SUSPENDED
GALV	GALVANIZED	TMA	TOWER MOUNTED AMPLIFIER
GC	GENERAL CONTRACTOR	TND	TINNED
GRND	GROUND	TYP	TYPICAL
GSM	GLOBAL SYSTEM MOBILE	UMTS	UNIVERSAL MOBILE TELECOMMUNICATION SERVICE
DYP	DYPSPALM BOARD	UNO	UNLESS NOTED OTHERWISE
HORZ	HORIZONTAL	VERT	VERTICAL
HR	HOUR	W/	WITH
HT	HEIGHT	W/O	WITHOUT
ID	INSIDE DIAMETER	WCS	WIRELESS COMMUNICATION SERVICE
IN	INCH, INCHES	WP	WATER PROOF
INSUL	INSULATION		
INT	INTERIOR		
L	LENGTH		

**PROJECT NOTES**

- THE FOLLOWING INFORMATION HAS BEEN PROVIDED BY SBA FOR THIS PROJECT AND HAS NOT BEEN FIELD VERIFIED AS PART OF THIS PROJECT.
  - SITE LAYOUT INFORMATION AND ORIENTATION
  - EXISTING TOWER, MOUNT AND EQUIPMENT ELEVATIONS
  - DESIGN PACKAGE BASED ON THE APPLICATION # 107539, v1
- A STRUCTURAL ANALYSIS TO DETERMINE THE TOWER CAPACITY TO SUPPORT THIS PROPOSED EQUIPMENT WAS PERFORMED FOR SBA OUTSIDE THE SCOPE OF THIS PROJECT.
  - STRUCTURAL ANALYSIS BY: MASTEC NETWORK SOLUTIONS
  - DATE: 01/04/19
  - RESULTS: ADEQUATE
- A MOUNT ANALYSIS TO DETERMINE THE MOUNT CAPACITY TO SUPPORT THIS PROPOSED EQUIPMENT WAS PERFORMED FOR SBA OUTSIDE THE SCOPE OF THIS PROJECT.
- CONFIRM THAT THE REQUIREMENTS OF THE STRUCTURAL ANALYSIS, MOUNT ANALYSIS AND ANY ASSOCIATED MODIFICATIONS HAVE BEEN FOLLOWED AND COMPLETED AS REQUIRED TO SUPPORT THE EQUIPMENT ASSOCIATED WITH THIS PROJECT.

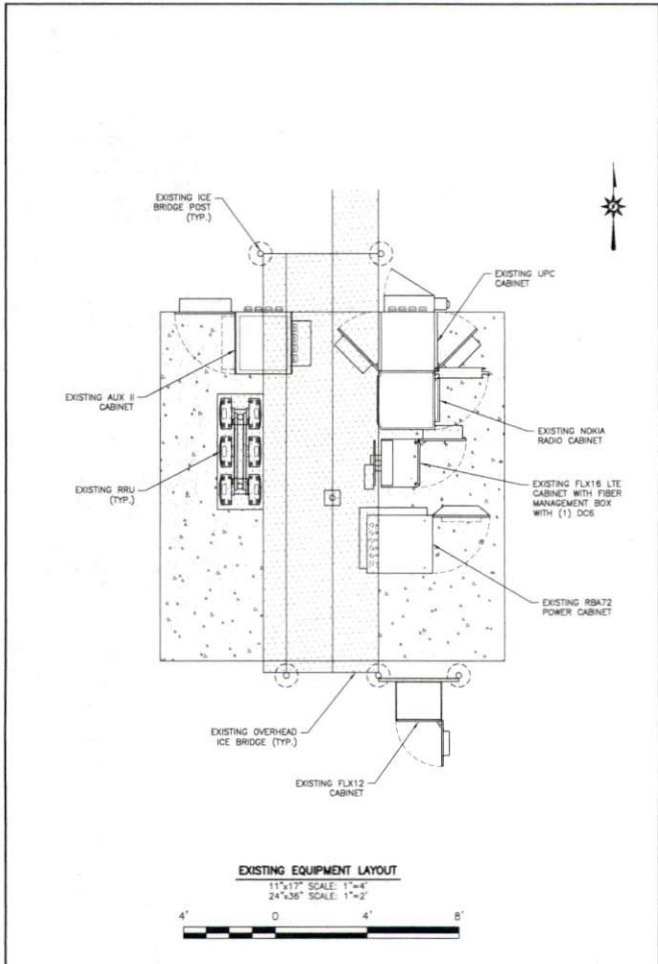


04/25/19  
 FDH ENGINEERING, PLLC  
 CDMP-1393  
 KRISTYN M. PEREZ, PE  
 NORTH CAROLINA LICENSE NO. 037993  
 DRAWN BY: TMB  
 CHECKED BY: DMS  
 APP'VD: KMP

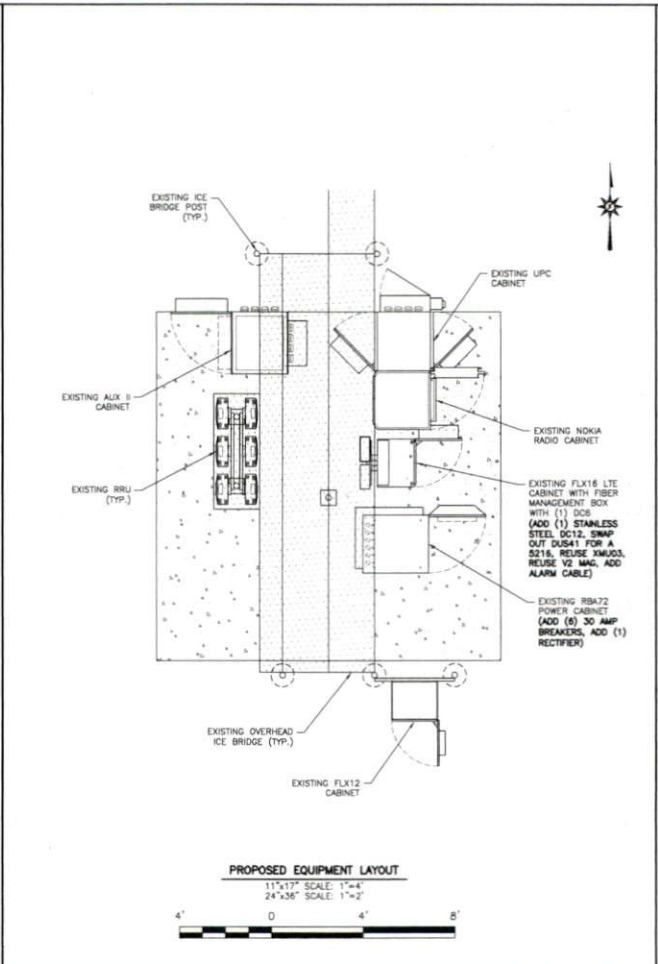
SUBMITTALS		
DATE	DESCRIPTION	REV ISSUED BY
04/25/19	CONSTRUCTION	0 DMS

THE INFORMATION CONTAINED IN THIS SET OF DOCUMENTS IS PROPRIETARY TO SBA. REPRODUCTION OR USAGE TO BE ALLOWED WITHOUT THE PERMISSION OF FDH INFRASTRUCTURE SERVICES IS PROHIBITED.

AT&T SITE ID:  
368-355  
 SITE ADDRESS:  
1275 NC 55 EAST  
COATS, NC 27521  
 FA LOCATION:  
10034555  
 TOWER OWNER ID:  
NCO2083-B  
 SHEET TITLE:  
NOTES  
 SHEET NUMBER:  
G-1



**EXISTING EQUIPMENT LAYOUT**  
 11'x17" SCALE: 1"=4'  
 24'x36" SCALE: 1"=2'



**PROPOSED EQUIPMENT LAYOUT**  
 11'x17" SCALE: 1"=4'  
 24'x36" SCALE: 1"=2'



**SBA**  
 8051 CONGRESS AVE  
 BOCA RATON, FL 33487  
 (800) 487-7483

**at&t**

**FDH INFRASTRUCTURE SERVICES**  
REGISTERED PROFESSIONAL ENGINEER  
 801 WOODBINE WOODWAY DR  
 FDI ENGINEERING, PLLC  
 801 WOODBINE WOODWAY, SUITE 210  
 BOCA RATON, FL 33487

**NORTH CAROLINA PROFESSIONAL ENGINEER SEAL**  
 037993  
 KRISTYN M. PEREZ

04/25/19

FDH ENGINEERING, PLLC  
 COAFF-1390  
 KRISTYN M. PEREZ, PE  
 NORTH CAROLINA LICENSE NO. 037993

DRAWN BY: NLS  
 CHECKED BY: DRS  
 APP'D BY: KMP

SUBMITTALS		
DATE	DESCRIPTION	REV. ISSUED BY
04/25/19	CONSTRUCTION	0 DRS

THE INFORMATION CONTAINED IN THIS SET OF DOCUMENTS IS PROPRIETARY BY NATURE. REPRODUCTION OR CAGING TO BE REPRODUCED THE WHOLE OR ANY PART OF THESE DRAWINGS WITHOUT THE PERMISSION OF FDH INFRASTRUCTURE SERVICES IS PROHIBITED.

AT&T SITE ID:  
368-355

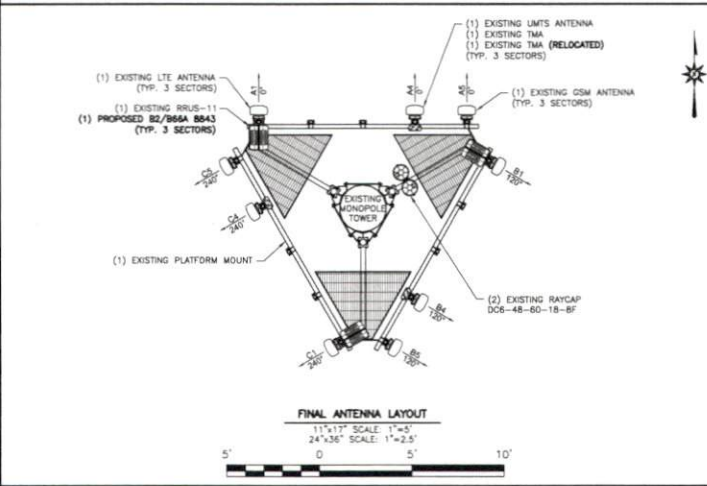
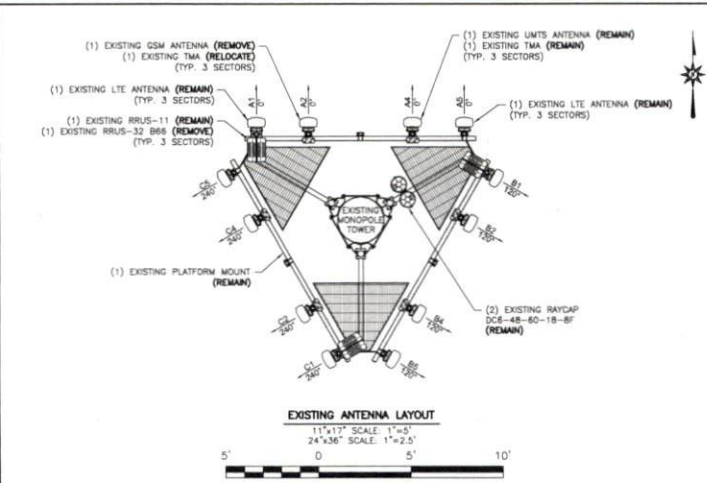
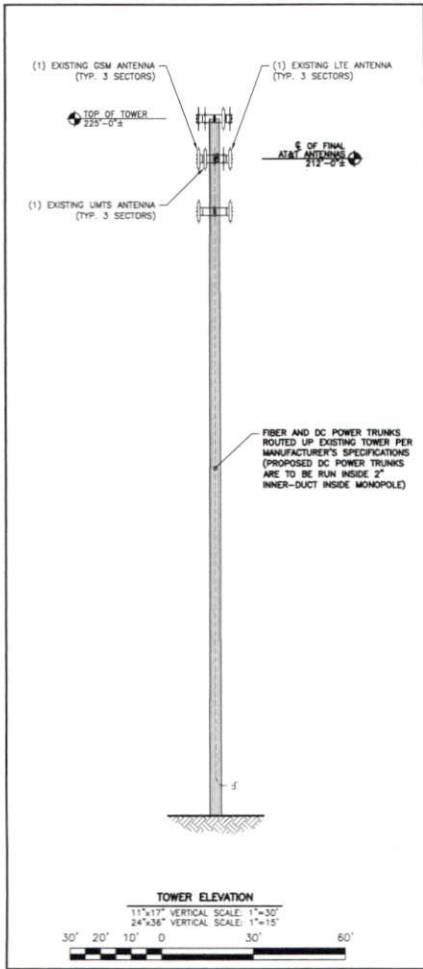
SITE ADDRESS:  
1275 NC 55 EAST  
COATS, NC 27521

FA LOCATION:  
10034555

TOWER OWNER ID:  
NC02083-B

SHEET TITLE:  
EQUIPMENT  
LAYOUT PLANS

SHEET NUMBER:  
C-1



INSTALL RRUS ON (3) DUAL BRU MOUNTING BRACKETS SUPPLIED BY AT&T

CONTRACTOR TO VERIFY EXISTING MOUNT AND EQUIPMENT SIZE, SPACING AND ORIENTATION PRIOR TO INSTALLATION

**SBA**  
 8051 CONGRESS AVE  
 BOCA RATON, FL 33487  
 (800) 487-7483

**at&t**

**FDH INFRASTRUCTURE SERVICES**  
 4000 W. WILSON AVENUE, SUITE 100  
 FAYETTEVILLE, NC 28404  
 PHONE: 704.336.1111 FAX: 704.336.1112

**SEAL**  
 NORTH CAROLINA PROFESSIONAL ENGINEER  
 SEAL 037993  
 KRISTYNN M. PEREZ

04/25/19

FDH ENGINEERING, PLLC  
 CDMP#-1300  
 KRISTYNN M. PEREZ, PE  
 NORTH CAROLINA LICENSE NO. 037993

DRAWN BY: NLS  
 CHECKED BY: DRS  
 APPROVED: KMP

SUBMITTALS		
DATE	DESCRIPTION	REV ISSUED BY
04/25/19	CONSTRUCTION	5 DRS

THE INFORMATION CONTAINED IN THIS SET OF DOCUMENTS IS PROPRIETARY TO SBA. REPRODUCTION OR CHANGE TO BE REPRODUCED THE WHOLE OR ANY PART OF THEM WITHOUT THE PERMISSION OF SBA INFRASTRUCTURE SERVICES IS PROHIBITED.

AT&T SITE ID:  
368-355

SITE ADDRESS:  
1275 NC 55 EAST  
COATS, NC 27621

FA LOCATION:  
10034555

TOWER OWNER ID:  
NC02083-B

SHEET TITLE:  
TOWER ELEVATION &  
ANTENNA LAYOUT PLANS

SHEET NUMBER:  
C-2



FDH ENGINEERING, PLLC  
 DRAWN BY: NLR  
 CHECKED BY: DRS  
 APPROVED BY: KMP

SUBMITTALS		REV	ISSUED BY
DATE	DESCRIPTION		
04/25/19	CONSTRUCTION	0	DRS

THE INFORMATION CONTAINED IN THIS SET OF DOCUMENTS IS PROPRIETARY BY NATURE. REPRODUCTION OR CADING TO BE REPRODUCED THE WHOLE OR ANY PART OF THESE DRAWINGS WITHOUT THE PERMISSION OF FDH INFRASTRUCTURE SERVICES IS PROHIBITED.

AT&T SITE ID:  
368-355

SITE ADDRESS:  
1275 NC 55 EAST  
COATS, NC 27521

FA LOCATION:  
10034555

TOWER OWNER ID:  
NC02083-B

SHEET TITLE:  
LEASED/EXISTING  
RF EQUIPMENT SCHEDULES

SHEET NUMBER:  
C-3

LEASED/EXISTING ANTENNA & CABLE SCHEDULE (ALL EQUIPMENT MOUNTED ON TOWER)

SECTOR	MARK	BAND	ANTENNA MAKE/MODEL	ANTENNA HEIGHT	ANTENNA AZIMUTH	TWA QTY./TYPE	RADIO QTY./TYPE	SURGE PROTECTION QTY./TYPE	CABLE QTY./TYPE
ALPHA	A1	LTE 700/AWS	KWIK EP80-652LBH8	212'	0'	-	(1) RRUS-11 (1) RRUS-32 B66	(1) DC6-48-60-18-BF	(1) FIBER (2) DC POWER (1) 3/8" RET
	A2	GSM 1900	KATHREIN 741-989	212'	0'	(1) RFS ATM192012-0	-	-	(2) 1-5/8" COAX
	A3	-	-	-	-	-	-	-	-
	A4	UMTS 1900	KATHREIN 741-989	212'	0'	(1) RFS ATM192012-0	-	-	(2) 1-5/8" COAX
	A5	LTE WCS	COMMSCOPE SBRHH-1065C	212'	0'	-	-	-	-
BETA	B1	LTE 700/AWS	KWIK EP80-652LBH8	212'	120'	-	(1) RRUS-11 (1) RRUS-32 B66	(1) DC6-48-60-18-BF	(2) DC POWER
	B2	GSM 1900	KATHREIN 741-989	212'	120'	(1) RFS ATM192012-0	-	-	(2) 1-5/8" COAX
	B3	-	-	-	-	-	-	-	-
	B4	UMTS 1900	KATHREIN 741-989	212'	120'	(1) RFS ATM192012-0	-	-	(2) 1-5/8" COAX
	B5	LTE WCS	COMMSCOPE SBRHH-1065C	212'	120'	-	-	-	-
GAMMA	C1	LTE 700/AWS	KWIK EP80-652LBH8	212'	240'	-	(1) RRUS-11 (1) RRUS-32 B66	-	-
	C2	GSM 1900	KATHREIN 741-989	212'	240'	(1) RFS ATM192012-0	-	-	(2) 1-5/8" COAX
	C3	-	-	-	-	-	-	-	-
	C4	UMTS 1900	KATHREIN 741-989	212'	240'	(1) RFS ATM192012-0	-	-	(2) 1-5/8" COAX
	C5	LTE WCS	COMMSCOPE SBRHH-1065C	212'	240'	-	-	-	-

(2) DC POWER  
TO BE REMOVED



04/25/19  
 FDH ENGINEERING, PLLC  
 CDAMP-1390  
 KRISTYN M. PEREZ, PE  
 NORTH CAROLINA LICENSE NO. 037993

DRAWN BY: NLS  
 CHECKED BY: DMS  
 APP'D: KMP

SUBMITTALS			
DATE	DESCRIPTION	REV	ISSUED BY
04/23/19	CONSTRUCTION	0	DMS

THE INFORMATION CONTAINED IN THIS SET OF DOCUMENTS IS PROPRIETARY BY NATURE. REPRODUCTION OR CHANGE TO BE REPRODUCED THE WHOLE OR ANY PART OF THESE DRAWINGS WITHOUT THE PERMISSION OF FDH INFRASTRUCTURE SERVICES IS PROHIBITED.

AT&T SITE ID:  
 368-355  
 SITE ADDRESS:  
 1275 NC 55 EAST  
 COATS, NC 27821  
 FA LOCATION:  
 10034555

TOWER OWNER ID:  
 NC02083-B

SHEET TITLE:  
 FINAL RF EQUIPMENT  
 SCHEDULES

SHEET NUMBER:  
 C-4

(P) - PROPOSED									
FINAL ANTENNA & CABLE SCHEDULE (ALL EQUIPMENT MOUNTED ON TOWER)									
SECTOR	MARK	BAND	ANTENNA MAKE/MODEL	ANTENNA HEIGHT	ANTENNA AZIMUTH	TMA QTY./TYPE	RADIO QTY./TYPE	SURGE PROTECTION QTY./TYPE	CABLE QTY./TYPE
ALPHA	A1	LTE 700/AWS/1900	KW EP80-652LBH8	212'	0°	-	(1) RRUS-11 (1) B2/866A 8843 (P)	(1) DC6-48-60-18-BF	(1) FIBER (2) DC POWER (1) 3/8" RET
	A2	-	-	-	-	-	-	-	-
	A3	-	-	-	-	-	-	-	-
	A4	UMTS 1900	KATHREN 741-989	212'	0°	(2) RFS ATM192012-0	-	-	(2) 1-5/8" COAX
	A5	GSM 1900	COMMSCOPE SBNH-1D65C	212'	0°	-	-	-	(2) 1-5/8" COAX (INACTIVE)
BETA	B1	LTE 700/AWS/1900	KW EP80-652LBH8	212'	120°	-	(1) RRUS-11 (1) B2/866A 8843 (P)	(1) DC6-48-60-18-BF	(2) DC POWER (P)
	B2	-	-	-	-	-	-	-	-
	B3	-	-	-	-	-	-	-	-
	B4	UMTS 1900	KATHREN 741-989	212'	120°	(2) RFS ATM192012-0	-	-	(2) 1-5/8" COAX
	B5	GSM 1900	COMMSCOPE SBNH-1D65C	212'	120°	-	-	-	(2) 1-5/8" COAX (INACTIVE)
GAMMA	C1	LTE 700/AWS/1900	KW EP80-652LBH8	212'	240°	-	(1) RRUS-11 (1) B2/866A 8843 (P)	-	-
	C2	-	-	-	-	-	-	-	-
	C3	-	-	-	-	-	-	-	-
	C4	UMTS 1900	KATHREN 741-989	212'	240°	(2) RFS ATM192012-0	-	-	(2) 1-5/8" COAX
	C5	GSM 1900	COMMSCOPE SBNH-1D65C	212'	240°	-	-	-	(2) 1-5/8" COAX (INACTIVE)

(2) DC POWER TO BE SWAPPED WITH (2) #8 AWG DC POWER

- ANTENNA NOTES:**
- THIS ANTENNA ORIENTATION PLAN IS A SCHEMATIC. THE CONTRACTOR SHALL VERIFY TOWER ORIENTATION AND FIELD COORDINATE REQUIRED ADJUSTMENTS TO ACHIEVE THE DESIRED ANTENNA AZIMUTHS.
  - ANTENNA CENTERLINE HEIGHT REFERENCED FROM GROUND AT BASE OF TOWER, ASSUMING HEIGHT OF 0'-0" AT SAID REFERENCE POINT.
  - ALL ANTENNAS, CABLES AND MOUNTS SHALL BE INSTALLED IN ACCORDANCE WITH THE TOWER ENGINEER'S RECOMMENDATIONS IN A MANNER CONSISTENT WITH THE STRUCTURAL ANALYSIS REPORT.
  - ALL ANTENNA BRACKETS PER ANTENNA MANUFACTURER, OR EQUAL, CONTRACTOR TO COORDINATE REQUIRED MECHANICAL DOWNTILT WITH AT&T.
  - ALL ANTENNA INFORMATION TO BE CONFIRMED WITH AT&T RF DESIGN PRIOR TO INSTALLATION.

RESERVED ANTENNA & CABLE SCHEDULE			
ANTENNA	TMA	RRU/SPO	CABLE
(3) KATHREN 741-989	-	-	-

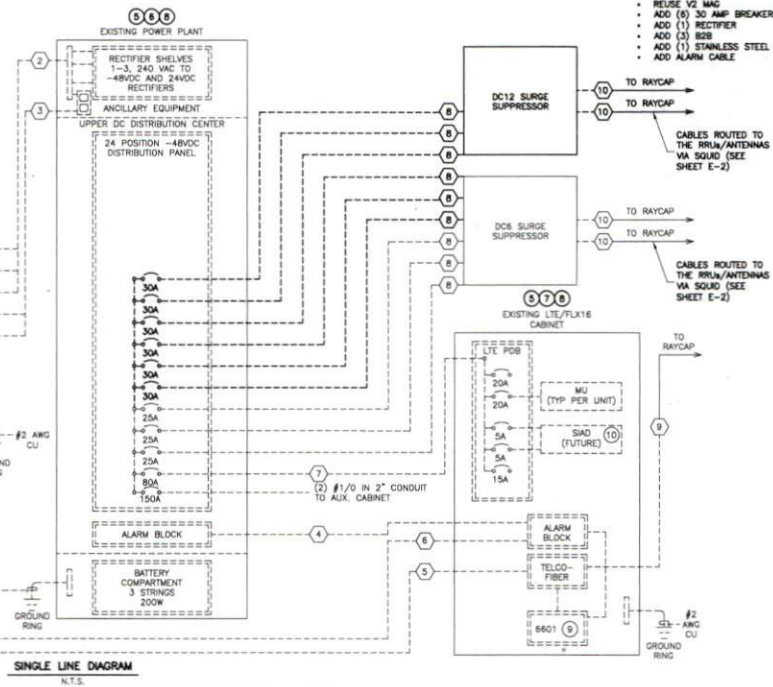
- GENERAL NOTES:**
- CONTRACTOR SHALL COORDINATE INCOMING SERVICES WITH LOCAL UTILITIES PRIOR TO TRENCHING.
  - ALL CONDUCTORS SHALL BE COPPER, 75 DEGREES C RATED, AND CONDUCTOR INSULATION SHALL BE THIN OR THIN.
  - ALL TERMINATIONS SHALL BE LISTED AND IDENTIFIED FOR USE WITH 75°C RATED CONDUCTORS OPERATING AT 75°C.
  - GROUND FAULT PROTECTION REQUIRED FOR UTILITY RECEPTACLES.
  - SERVICE NEUTRAL SHALL BE GROUNDED AT ONE LOCATION ONLY.
  - WHITE/NEUTRAL, GREEN/GROUND SHALL BE MAINTAINED THROUGHOUT THE SITE ELECTRICAL SYSTEM (TAPE WILL NOT BE ACCEPTABLE).
  - EQUIPMENT LOCATED OUTSIDE OR EXPOSED TO MOISTURE SHALL BE NEMA 3R RATED.
  - CONTRACTOR SHALL USE SCHEDULE 80 PVC CONDUIT THROUGHOUT, UNLESS OTHERWISE NOTED.
  - ALL NEWLY INSTALLED EQUIPMENT SHALL BE RATED AT 10K AIC MINIMUM. HIGHER RATINGS SHALL BE REQUIRED WHERE AVAILABLE FAULT CURRENT EXCEEDS THIS VALUE. EXACT FAULT CURRENT AVAILABLE SHALL BE COORDINATED WITH LOCAL UTILITY BASED ON EXACT CONDITIONS (TRANSFORMER SIZE, PERCENT IMPEDANCE, LENGTH OF CONDUCTORS, ETC.).
  - ELECTRICAL CONTRACTOR TO VERIFY ADDITIONAL/PROPOSED LOADING DOES NOT EXCEED SYSTEM CAPACITY. PLEASE NOTIFY FDH INFRASTRUCTURE SERVICES WITH ANY DISCREPANCIES.

- NOTES BY SYMBOL:**
- EXISTING UTILITIES AND EQUIPMENT IN PLACE SHOULD BE USED TO FEED NEW CABINETS INDICATED.
  - UNIVERSAL POWER CABINET (UPC) IS SERVICE ENTRANCE RATED, MEETING UL E7 AND UL 50. ALL ITEMS SHOWN WITHIN CABINET ARE PROVIDED WITH THE CABINET AND ARE SHOWN FOR REFERENCE ONLY UNLESS NOTED OTHERWISE. PROVIDE THE CONNECTIONS INDICATED. OBTAIN POWER CABINET DRAWINGS FOR ADDITIONAL INFORMATION.
  - THE CONTRACTOR SHALL FURNISH AND INSTALL A 125A/2 POLE BREAKER WITHIN THE EXISTING UPC TO FEED THE PROPOSED DISTRIBUTION PANEL. "SUBPANEL" TYPE AND AIC RATING OF BREAKER SHALL MATCH EXISTING (50 D 00). WHERE NO SPACE IS AVAILABLE, CONSOLIDATE RECEPTACLE CIRCUITS AND PROVIDE WITH-TWIN BREAKER TO CREATE SPACE. (IF REQUIRED).
  - PROVIDE AND INSTALL 24VDC TO -48VDC CONVERTERS WITH DISTRIBUTION BOARD WITHIN EXISTING AUX #9 CABINET.
  - CONTRACTOR SHALL PROVIDE ALL AC CIRCUIT BREAKERS REQUIRED TO FEED AT&T EQUIPMENT. DC CIRCUIT BREAKERS SHALL BE PROVIDED BY AT&T. CONTRACTOR SHALL LABEL ALL CIRCUIT BREAKERS WITH RESPECT TO WHAT THEY FEED.

- POWER PLANT CABINET IS MANUFACTURED BY EMERSON AND CSA/UL RATED. ALL ITEMS SHOWN WITHIN CABINET ARE PROVIDED WITH THE CABINET AND ARE SHOWN FOR REFERENCE ONLY UNLESS NOTED OTHERWISE. PROVIDE THE CONNECTIONS INDICATED. OBTAIN POWER CABINET DRAWINGS FOR ADDITIONAL INFORMATION.
- THE CONTRACTOR SHALL REFER TO THE FLX16 LTE CABINET AND EQUIPMENT INSTALLATION MANUALS, SPECIFICATIONS, AND AT&T LTE CONSTRUCTION GUIDELINES FOR ADDITIONAL INFORMATION NOT NECESSARILY INCLUDED WITHIN THESE DRAWINGS.
- THE CONTRACTOR SHALL REFER TO EQUIPMENT DRAWINGS AND SPECIFICATIONS FOR CONTROL AND ALARM WIRING. INTERIOR ALARMS ARE PRE-WIRED.
- WHERE REQUIRED, PROVIDE -48VDC POWER, ALARM, AND FIBER CONNECTIONS TO THE 8601 AS INDICATED. COORDINATE WITH AT&T CONSTRUCTION MANAGER.
- SIAD'S SHALL BE FED FROM THE CABINET THEY ARE LOCATED WITHIN (UPC OR LTE).

MARK	CONDUIT			CABLE			REMARKS
	QUANTITY	SIZE	GROUND SIZE	QUANTITY	SIZE	GROUND SIZE	
(1)	1	2"	#3		#6		AC POWER FROM UPC TO SUBPANEL (ASSUMED SIZE)
(2)	1	1 1/2"	#6	#6	#6		AC POWER FROM SUBPANEL TO POWER PLANT (POWER FOR RECTIFIERS) (QUANTITY OF CONDUCTORS INDICATED IS PER BREAKER)
(3)	1	1"	#3	#12	#12		AC POWER FROM SUBPANEL TO ANCILLARY EQUIPMENT IN POWER PLANT
(4)	1	2"		BELDEN CABLES			ALARM CONTROL FROM POWER PLANT TO FLX16
(5)	1	2"		FIBER 18-FIBER (FB-1888-AD213-XXXX)			FIBER FROM UPC TO FLX16, SWEEPING BENDS
(6)	1	2"		BELDEN CABLES			ALARM CONTROL FROM UPC TO FLX16
(7)	1	2"	#2	#2	#2		DC POWER FROM POWER PLANT TO LTE PDB
(8)	1	2"	#6	#6	#6		DC POWER FROM POWER PLANT TO SURGE SUPPRESSOR
(9)	1	2"	#1	FIBER 18-PAIR			FIBER FROM FLX16 TO RRU's, SWEEPING BENDS
(10)	1	2"	#4	3PR DC #8 AWG			DC POWER FROM SURGE SUPPRESSOR TO RRU's

- SCOPING NOTES:**
- ADD (3) E2/866A 8643
  - (2) DC POWER TO BE SHIPPED WITH (2) #6 AWG DC POWER
  - DECOM (3) AMS RRU's-32 866
  - SWAP OUT DUS41 FOR A 5218
  - REUSE XMU03
  - REUSE V2 MAG
  - ADD (8) 30 AMP BREAKERS
  - ADD (1) RECTIFIER
  - ADD (3) 868
  - ADD (1) STAINLESS STEEL DC12
  - ADD ALARM CABLE



**SBA**  
8051 CONGRESS AVE  
BOCA RATON, FL 33487  
(800) 487-7483

**at&t**

**FDH INFRASTRUCTURE SERVICES**  
10001 WINDY HOLLOW LN  
FTH ENGINEERING, PLLC  
1000 WINDY HOLLOW LN  
FTH ENGINEERING, PLLC  
1000 WINDY HOLLOW LN  
BOCA RATON, FL 33487  
PHONE: 561-767-0777 FAX: 561-767-1031

**SEAL**  
037993  
ENGINEER  
KRISTYN M. PEREZ

04/25/19

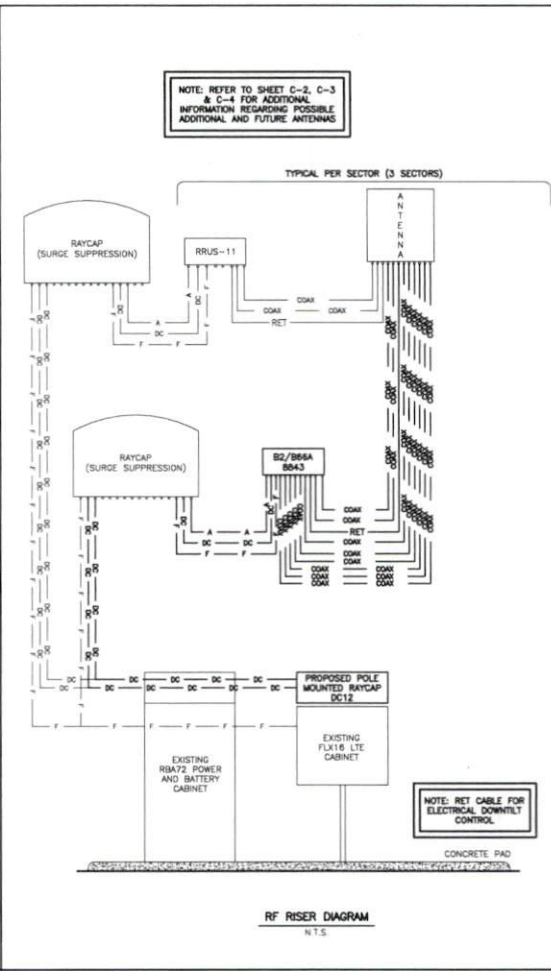
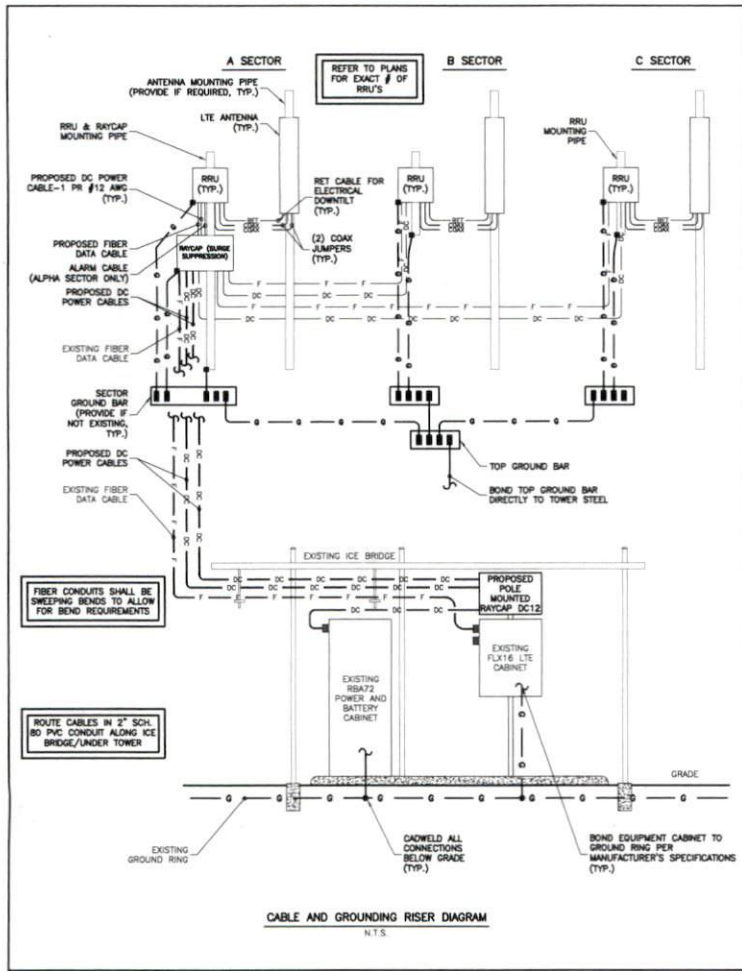
FDH ENGINEERING, PLLC  
COAP#-1390  
KRISTYN M. PEREZ, PE  
NORTH CAROLINA LICENSE NO. 037993  
DRAWN BY: NLE  
CHECKED BY: DRS  
APPROVED: KMP

DATE	DESCRIPTION	REV	ISSUED BY
04/25/19	CONSTRUCTION	0	DRS

THE INFORMATION CONTAINED IN THIS SET OF DOCUMENTS IS PROPRIETARY BY NATURE. REPRODUCTION OR CADING TO BE REPRODUCED THE WHOLE OR ANY PART OF THESE DRAWINGS WITHOUT THE PERMISSION OF FDH INFRASTRUCTURE SERVICES IS PROHIBITED.

AT&T SITE ID: 368-355  
SITE ADDRESS: 1275 NC 55 EAST COATS, NC 27521  
FA LOCATION: 10034555  
TOWER OWNER ID: NCO2083-B  
SHEET TITLE: SINGLE LINE DIAGRAM  
SHEET NUMBER: E-1





**SBA**  
 8051 CONGRESS AVE  
 BOCA RATON, FL 33487  
 (800) 457-7483

**at&t**

**FDH INFRASTRUCTURE SERVICES**  
 CONSULTING ENGINEERS  
 807 WILSON DR. PALM BEACH, FL 33480  
 PHONE 561-755-1017 FAX 561-755-1831

**NORTH CAROLINA ENGINEERING SEAL**  
 037993  
 KRISTYNN M. PEREZ

04/25/19

FDH ENGINEERING, PLLC  
 COM#-1390  
 KRISTYNN M. PEREZ, PE  
 NORTH CAROLINA LICENSE NO. 037993

DRAWN BY: NLS  
 CHECKED BY: DRS  
 APP'D: KMP

SUBMITTALS		
DATE	DESCRIPTION	REV. ISSUES BY
04/25/19	CONSTRUCTION	0 DRS

THE INFORMATION CONTAINED IN THIS SET OF DOCUMENTS IS PROPRIETARY BY NATURE. REPRODUCTION OR CHANGE TO BE REPRODUCED THE WHOLE OR ANY PART OF THESE DRAWINGS WITHOUT THE PERMISSION OF FDH INFRASTRUCTURE SERVICES IS PROHIBITED.

AT&T SITE ID:  
 368-355

SITE ADDRESS:  
 1275 NC 55 EAST  
 COATS, NC 27521

FA LOCATION:  
 10034555

TOWER OWNER ID:  
 NC02083-B

SHEET TITLE:  
 RISER DIAGRAM

SHEET NUMBER:  
 E-2