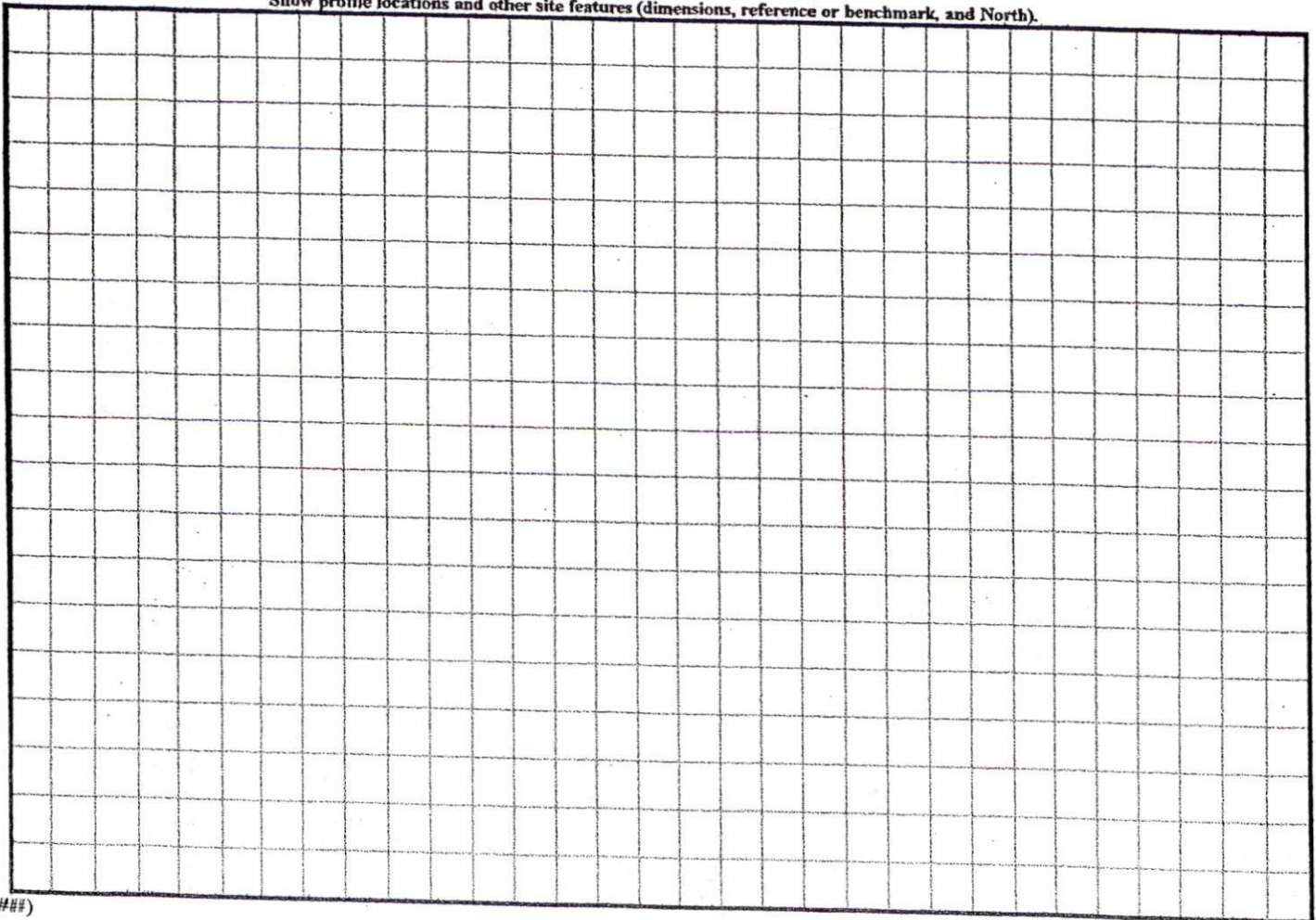


COMMENTS: _____

<u>LANDSCAPE POSITIONS</u>	<u>GROUP</u>	<u>TEXTURES</u>	<u>.1955 LTAR</u>	<u>CONSISTENCE MOIST</u>	<u>WET</u>
R-RIDGE	I	S-SAND	1.2 - 0.8	VFR-VERY FRIABLE FR-FRIABLE FI-FIRM VFI-VERY FIRM EFI-EXTREMELY FIRM	NS-NON-STICKY SS-SLIGHTLY STICKY S-STICKY VS-VERY STICKY NP-NON-PLASTIC SP-SLIGHTLY STICKY P-PLASTIC VP-VERY PLASTIC
S-SHOULDER SLOPE		LS-LOAMY SAND			
L-LINEAR SLOPE	II	SL-SANDY LOAM	0.8 - 0.6		
FS-FOOT SLOPE		L-LOAM			
N-NOSE SLOPE	III	SI-SILT-	0.6 - 0.3		
H-HEAD SLOPE		SIL-SILT LOAM			
CC-CONCLAVE SLOPE		CL-CLAY LOAM			
CV-CONVEX SLOPE		SCL-SANDY CLAY LOAM			
T-TERRACE	IV	SIC-SILTY CLAY	0.4 - 0.1		
FP-FLOOD PLAN		C-CLAY			
		SC-SANDY CLAY			
<u>STRUCTURE</u>		<u>MINERALOGY</u>			
SG-SINGLE GRAIN		SLIGHTLY EXPANSIVE			
M-MASSIVE					
CR-CRUMB		EXPANSIVE			
GR-GRANULAR					
SBK-SUBANGULAR BLOCKY					
ABK-ANGULAR BLOCKY					
PL-PLATY					
PR-PRISMATIC					

Show profile locations and other site features (dimensions, reference or benchmark, and North).

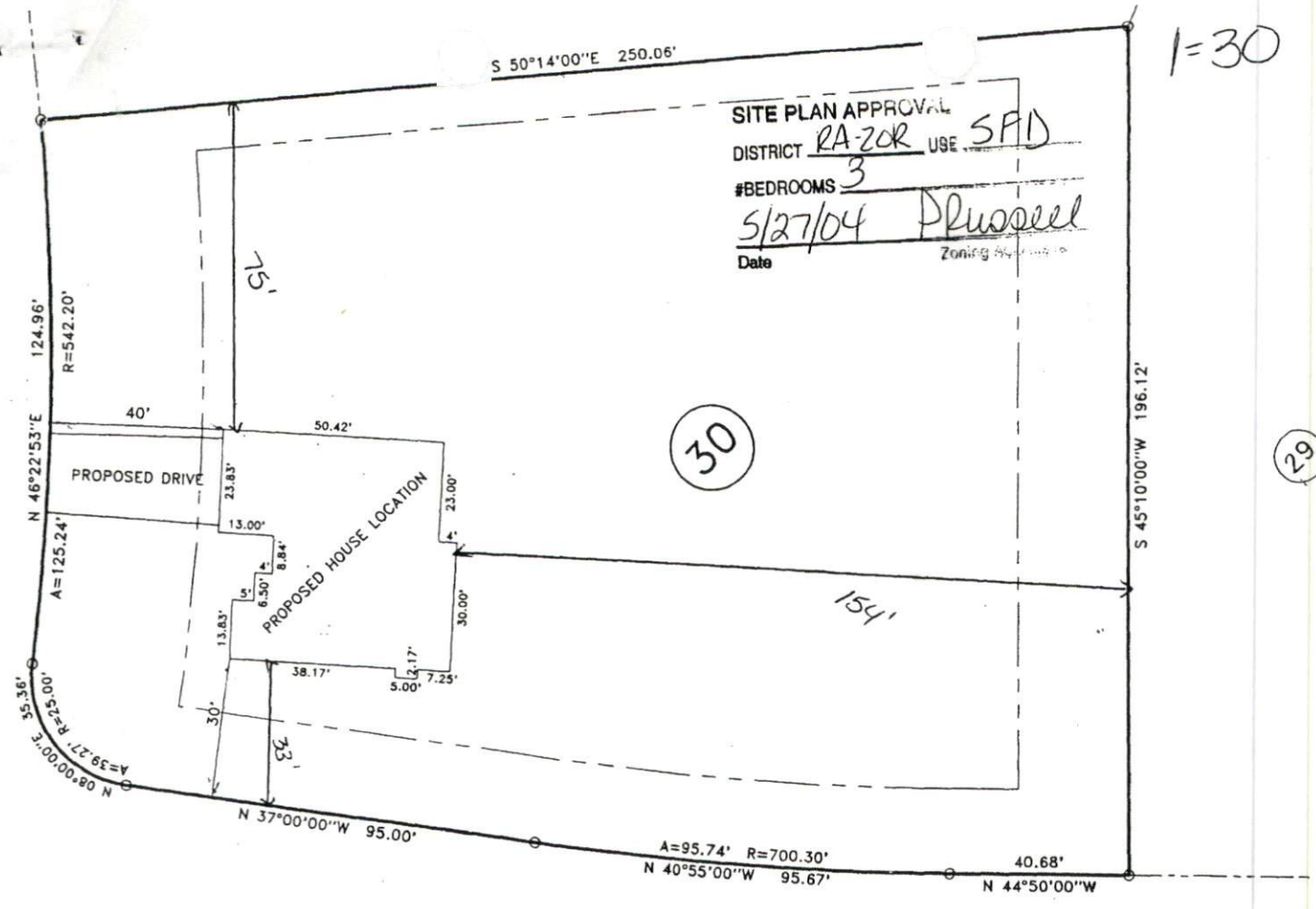


1=30

SITE PLAN APPROVAL
 DISTRICT RA-20R USE SFD
 #BEDROOMS 3
5/27/04 Plussell
 Date Zoning

30

29



"PALMETTO DRIVE" 60' S/D
 (UNDEVELOPED)