

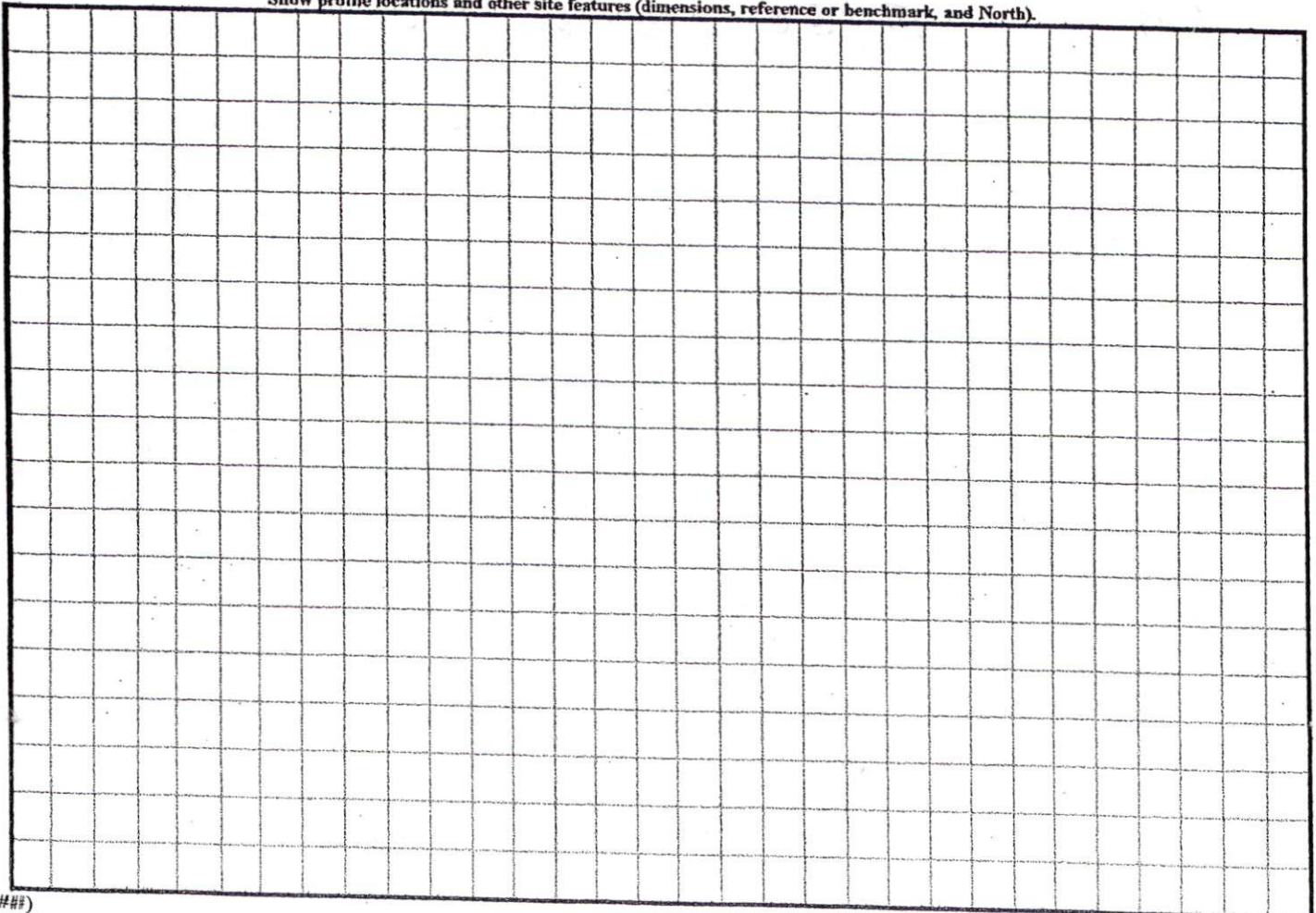
COMMENTS: _____

<u>LANDSCAPE POSITIONS</u>	<u>GROUP</u>	<u>TEXTURES</u>	<u>.1955 LTAR</u>	<u>CONSISTENCE MOIST</u>	<u>WET</u>
R-RIDGE	I	S-SAND	1.2 - 0.8	VFR-VERY FRIABLE	NS-NON-STICKY
S-SHOULDER SLOPE		LS-LOAMY SAND			
L-LINEAR SLOPE	II	SL-SANDY LOAM	0.8 - 0.6	FR-FRIABLE	SS-SLIGHTLY STICKY
FS-FOOT SLOPE		L-LOAM			
N-NOSE SLOPE	III	SI-SILT-	0.6 - 0.3	FI-FIRM	S-STICKY
H-HEAD SLOPE		SIL-SILT LOAM			
CC-CONCLAVE SLOPE		CL-CLAY LOAM			
CV-CONVEX SLOPE		SCL-SANDY CLAY LOAM			
T-TERRACE	IV	SIC-SILTY CLAY	0.4 - 0.1	VFI-VERY FIRM	VS-VERY STICKY
FP-FLOOD PLAN		C-CLAY			
		SC-SANDY CLAY			
		SICL-SILTY CLAY LOAM		EFI-EXTREMELY FIRM	NP-NON-PLASTIC
					SP-SLIGHTLY STICKY
					P-PLASTIC
					VP-VERY PLASTIC

STRUCTURE
 SG-SINGLE GRAIN
 M-MASSIVE
 CR-CRUMB
 GR-GRANULAR
 SBK-SUBANGULAR BLOCKY
 ABK-ANGULAR BLOCKY
 PL-PLATY
 PR-PRISMATIC

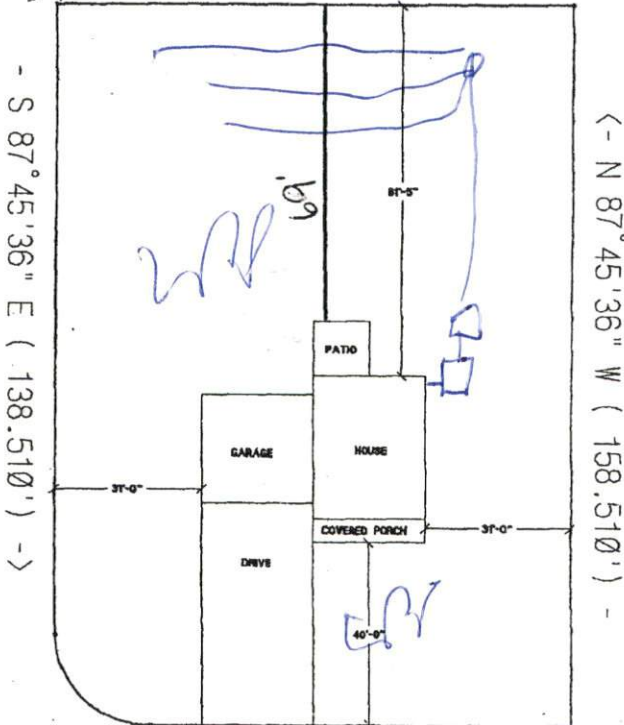
MINERALOGY
 SLIGHTLY EXPANSIVE
 EXPANSIVE

Show profile locations and other site features (dimensions, reference or benchmark, and North).



3270
1824

<- S 02°14'24" W (110.000') -



- S 87°45'36" E (138.510') ->

<- N 87°45'36" W (158.510') -

<- S 02°14'24" W (90.000') -

Manual Highlight Function

Stub out
Shallow
max net
Require
Pump
Card
change
to 25%
Reduction
Q No
Pump

MILLENNIUM HOMES

LOT#52 HIGHLAND FOREST

SCALE: 1"=40'

Permit Copy

SITE PLAN APPROVAL
DISTRICT RA-ZOR USE SFD
#BEDROOMS 3
4/23/04 Prussell
Date Zoning Administrator