

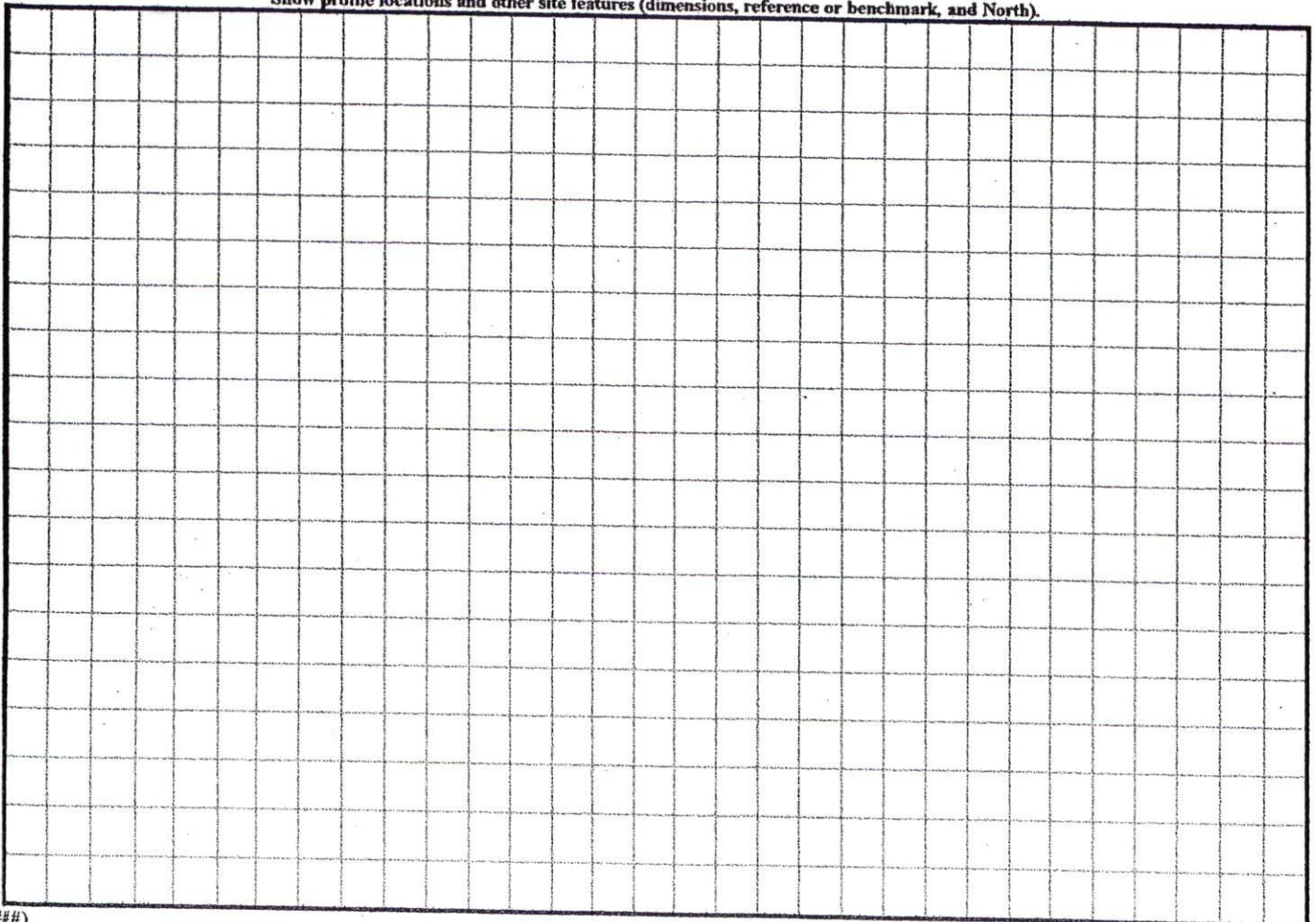
COMMENTS: _____

<u>LANDSCAPE POSITIONS</u>	<u>GROUP</u>	<u>TEXTURES</u>	<u>.1955 LTAR</u>	<u>CONSISTENCE MOIST</u>	<u>WET</u>
R-RIDGE S-SHOULDER SLOPE L-LINEAR SLOPE FS-FOOT SLOPE N-NOSE SLOPE H-HEAD SLOPE CC-CONCLAVE SLOPE CV-CONVEX SLOPE T-TERRACE FP-FLOOD PLAN	I	S-SAND LS-LOAMY SAND	1.2 - 0.8	VFR-VERY FRIABLE FR-FRIABLE FI-FIRM VFI-VERY FIRM EFI-EXTREMELY FIRM	NS-NON-STICKY SS-SLIGHTLY STICKY S-STICKY VS-VERY STICKY NP-NON-PLASTIC SP-SLIGHTLY STICKY P-PLASTIC VP-VERY PLASTIC
	II	SL-SANDY LOAM L-LOAM	0.8 - 0.6		
	III	SI-SILT- SIL-SILT LOAM CL-CLAY LOAM SCL-SANDY CLAY LOAM SICL-SILTY CLAY LOAM	0.6 - 0.3		
	IV	SIC-SILTY CLAY C-CLAY SC-SANDY CLAY	0.4 - 0.1		

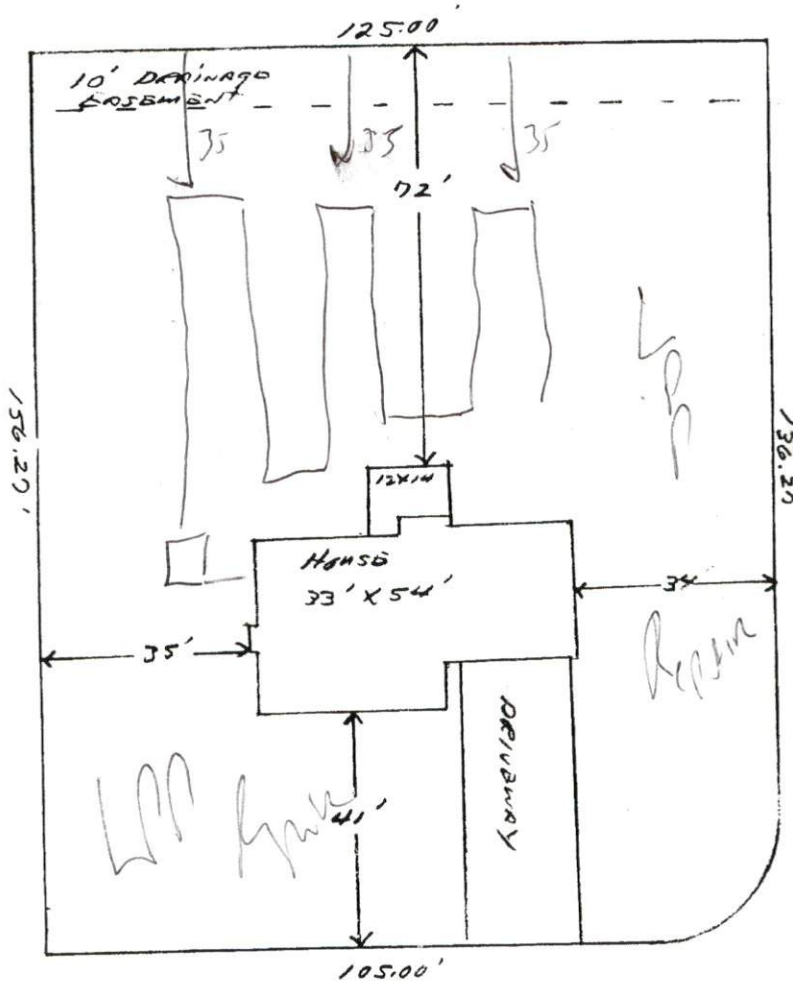
STRUCTURE
 SG-SINGLE GRAIN
 M-MASSIVE
 CR-CRUMB
 GR-GRANULAR
 SBK-SUBANGULAR BLOCKY
 ABK-ANGULAR BLOCKY
 PL-PLATY
 PR-PRISMATIC

MINERALOGY
 SLIGHTLY EXPANSIVE
 EXPANSIVE

Show profile locations and other site features (dimensions, reference or benchmark, and North).



1" = 30'



Highland Forest Drive

Essex Court West

Wm Kent Pierce, Inc
Lot # 41 Highland Forest
(The Garden Park)

SITE PLAN APPROVAL
DISTRICT RAAD USE SFD
#BEDROOMS 3
3-8-04
ZONING ADMINISTRATOR