



COMMENTS: \_\_\_\_\_  
 \_\_\_\_\_  
 \_\_\_\_\_

<u>LANDSCAPE POSITIONS</u>	<u>GROUP</u>	<u>TEXTURES</u>	<u>.1955 LTAR</u>	<u>CONSISTENCE MOIST</u>	<u>WET</u>
R-RIDGE	I	S-SAND	1.2 - 0.8	VFR-VERY FRIABLE	NS-NON-STICKY
S-SHOULDER SLOPE		LS-LOAMY SAND			
L-LINEAR SLOPE	II	SL-SANDY LOAM	0.8 - 0.6	FR-FRIABLE	SS-SLIGHTLY STICKY
FS-FOOT SLOPE		L-LOAM			
N-NOSE SLOPE	III	SI-SILT-	0.6 - 0.3	VFI-VERY FIRM	VS-VERY STICKY
H-HEAD SLOPE		SIL-SILT LOAM			
CC-CONCLAVE SLOPE		CL-CLAY LOAM			
CV-CONVEX SLOPE		SCL-SANDY CLAY LOAM			
T-TERRACE	IV	SIC-SILTY CLAY	0.4 - 0.1	EFI-EXTREMELY FIRM	NP-NON-PLASTIC
FP-FLOOD PLAN		C-CLAY			
		SC-SANDY CLAY			SP-SLIGHTLY STICKY
					P-PLASTIC
					VP-VERY PLASTIC

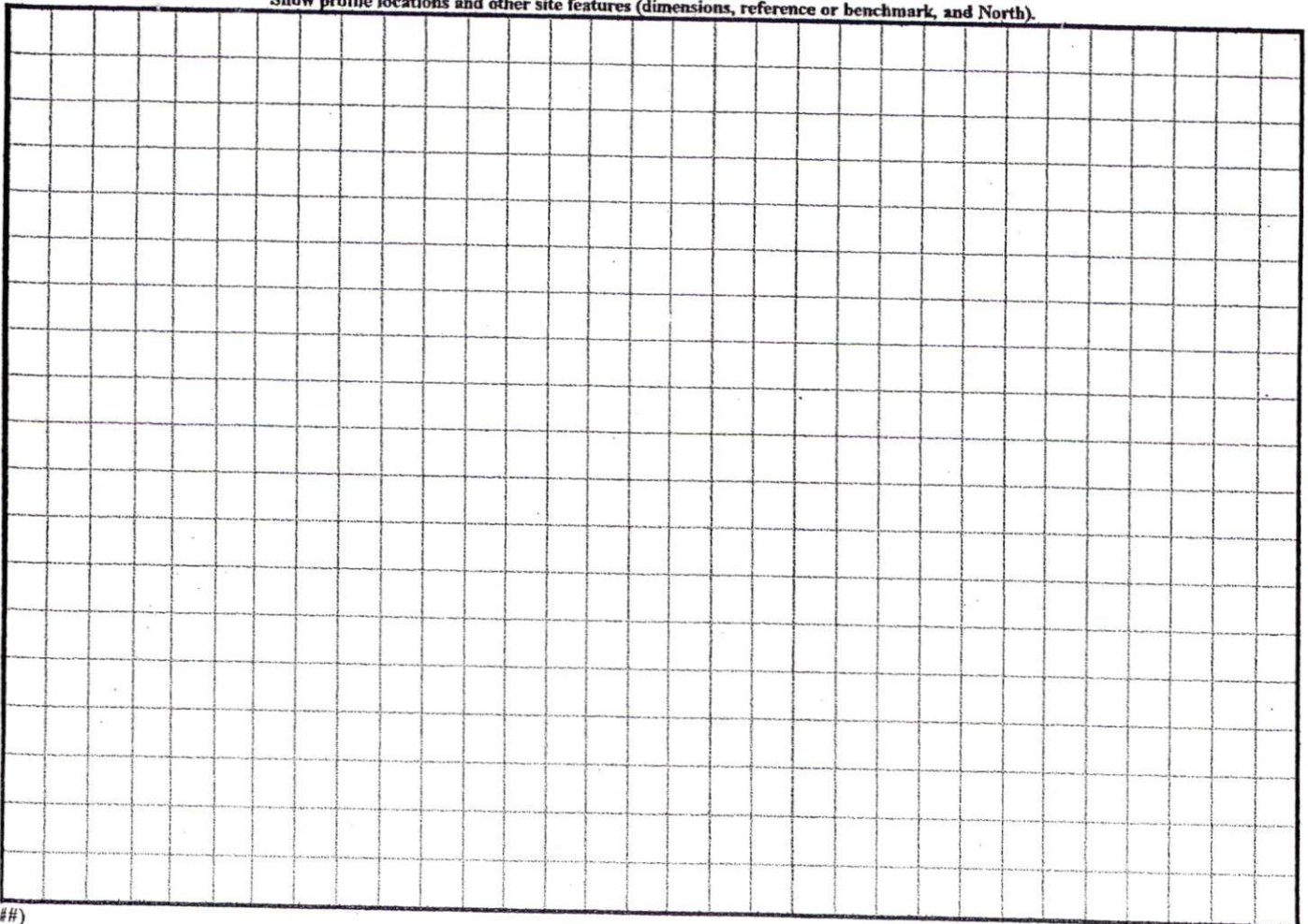
STRUCTURE

- SG-SINGLE GRAIN
- M-MASSIVE
- CR-CRUMB
- GR-GRANULAR
- SBK-SUBANGULAR BLOCKY
- ABK-ANGULAR BLOCKY
- PL-PLATY
- PR-PRISMATIC

MINERALOGY

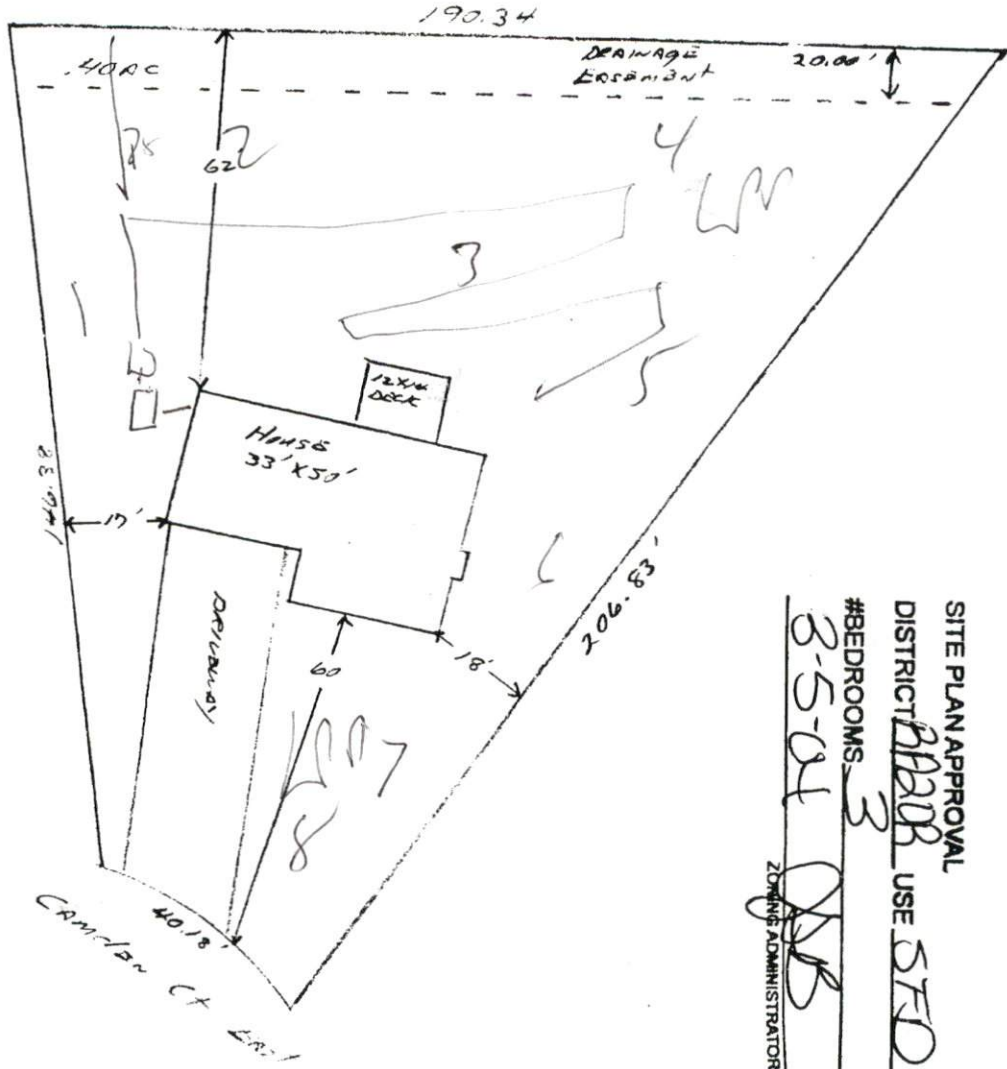
- SLIGHTLY EXPANSIVE
- EXPANSIVE

Show profile locations and other site features (dimensions, reference or benchmark, and North).



1" = 30'

Sub  
at  
shower  
where  
shown  
ground level  
or high  
to pump out  
not be  
required  
meat  
on 1/2



SITE PLAN APPROVAL  
 DISTRICT BBB USE SFD  
 #BEDROOMS 3  
8-5-04  
 ZONING ADMINISTRATOR

Odom Investments, Inc.  
Lot # 130 Highland Forest  
 (The Walton III - Plan)