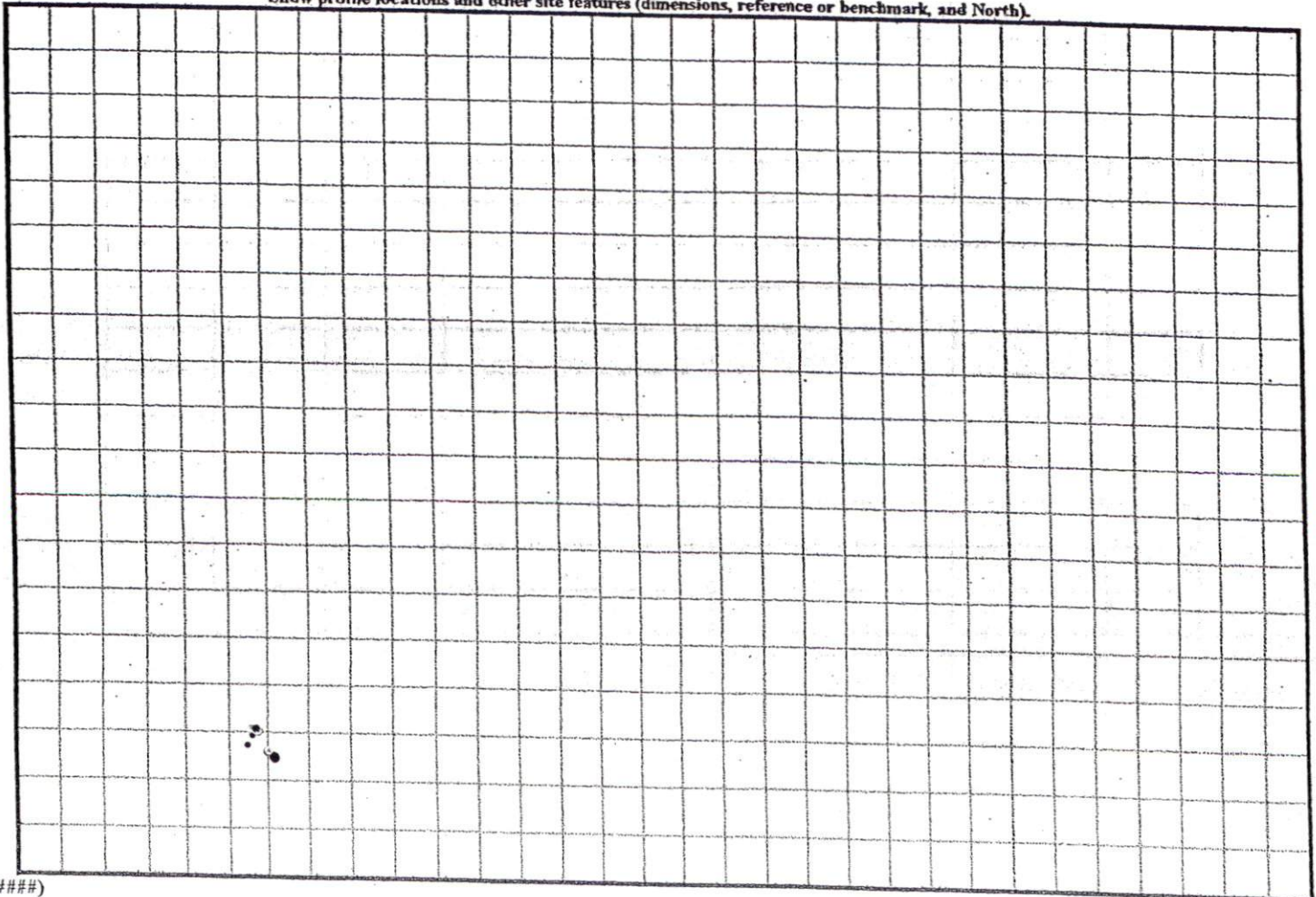


COMMENTS: _____

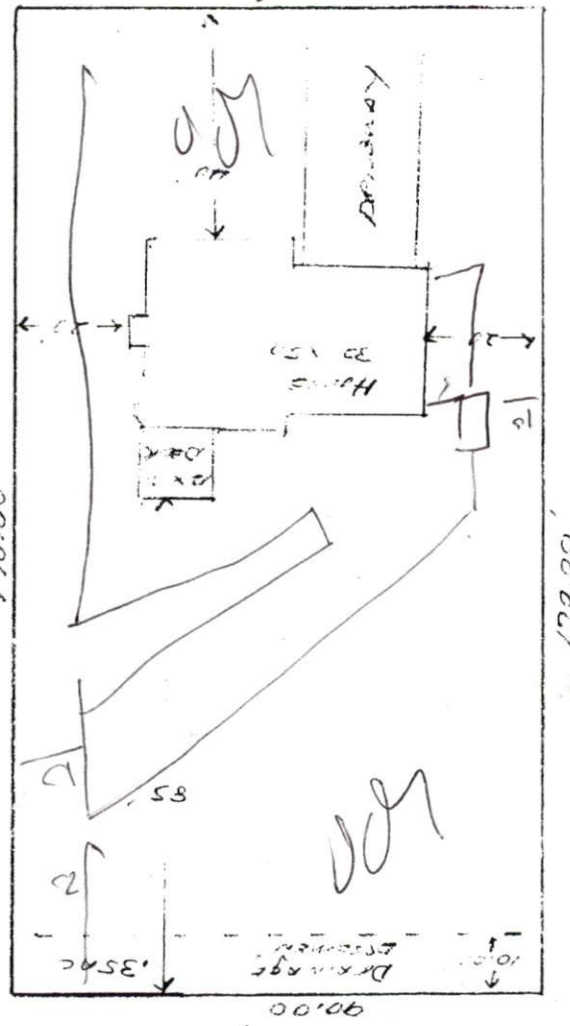
LANDSCAPE POSITIONS	GROUP	TEXTURES	.1955 LTAR	CONSISTENCE MOIST	WET
R-RIDGE	I	S-SAND	1.2 - 0.8	VFR-VERY FRIABLE	NS-NON-STICKY
S-SHOULDER SLOPE		LS-LOAMY SAND			
L-LINEAR SLOPE	II	SL-SANDY LOAM	0.8 - 0.6	FR-FRIABLE	SS-SLIGHTLY STICKY
FS-FOOT SLOPE		L-LOAM			
N-NOSE SLOPE					
H-HEAD SLOPE	III	SI-SILT-	0.6 - 0.3	VFI-VERY FIRM	VS-VERY STICKY
CC-CONCLAVE SLOPE		SIL-SILT LOAM			
CV-CONVEX SLOPE		CL-CLAY LOAM			
T-TERRACE		SCL-SANDY CLAY LOAM			
FP-FLOOD PLAN		SICL-SILTY CLAY LOAM			
	IV	SIC-SILTY CLAY	0.4 - 0.1	EFI-EXTREMELY FIRM	NP-NON-PLASTIC
		C-CLAY			
		SC-SANDY CLAY			
<u>STRUCTURE</u>		<u>MINERALOGY</u>			
SG-SINGLE GRAIN		SLIGHTLY EXPANSIVE			
M-MASSIVE					
CR-CRUMB		EXPANSIVE			
GR-GRANULAR					
SBK-SUBANGULAR BLOCKY					
ABK-ANGULAR BLOCKY					
PL-PLATY					
PR-PRISMATIC					

Show profile locations and other site features (dimensions, reference or benchmark, and North).



(#####)

1" = 30'



CANDEN COURT EAST

Wm. Kent Pierce, Inc

Lot # 120 High Hill Road

(The Stearns - Plan)

SITE PLAN APPROVAL

DISTRICT R20R USE SFD

#BEDROOMS 3

2-18-04

ZONING ADMINISTRATOR