

COMMENTS: _____

LANDSCAPE POSITIONS	GROUP	TEXTURES	.1955 LTAR	CONSISTENCE MOIST	WET
R-RIDGE	I	S-SAND	1.2 - 0.8	VFR-VERY FRIABLE	NS-NON-STICKY
S-SHOULDER SLOPE		LS-LOAMY SAND			
L-LINEAR SLOPE	II	SL-SANDY LOAM	0.8 - 0.6	FR-FRIABLE	SS-SLIGHTLY STICKY
FS-FOOT SLOPE		L-LOAM		FI-FIRM	S-STICKY
N-NOSE SLOPE					VFI-VERY FIRM
H-HEAD SLOPE	III	SI-SILT-	0.6 - 0.3	EFI-EXTREMELY FIRM	NP-NON-PLASTIC
CC-CONCLAVE SLOPE		SIL-SILT LOAM			SP-SLIGHTLY STICKY
CV-CONVEX SLOPE		CL-CLAY LOAM			P-PLASTIC
T-TERRACE		SCL-SANDY CLAY LOAM			VP-VERY PLASTIC
FP-FLOOD PLAN		SICL-SILTY CLAY LOAM			
	IV	SIC-SILTY CLAY	0.4 - 0.1		
		C-CLAY			
		SC-SANDY CLAY			

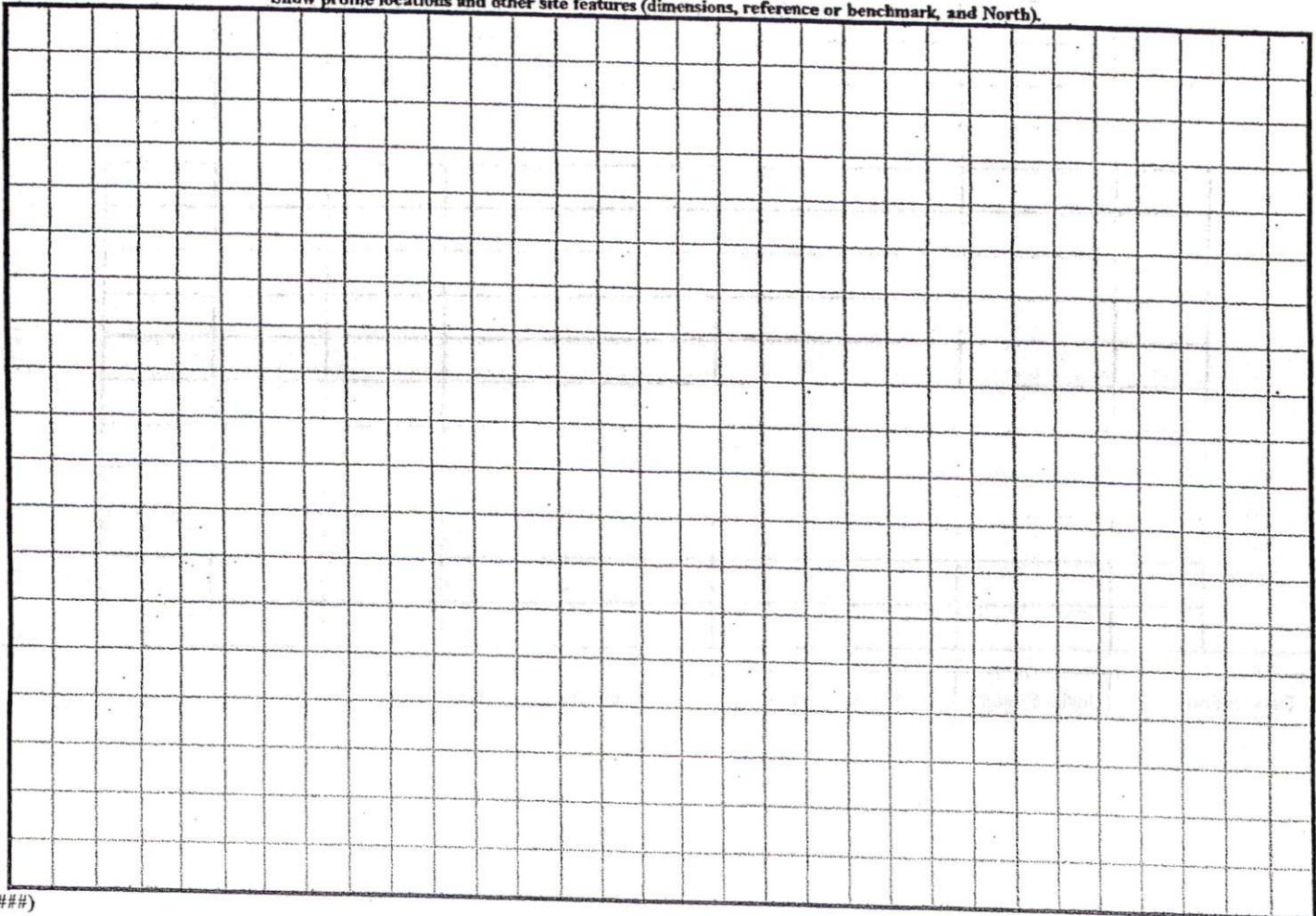
STRUCTURE

- SG-SINGLE GRAIN
- M-MASSIVE
- CR-CRUMB
- GR-GRANULAR
- SBK-SUBANGULAR BLOCKY
- ABK-ANGULAR BLOCKY
- PL-PLATY
- PR-PRISMATIC

MINERALOGY

- SLIGHTLY EXPANSIVE
- EXPANSIVE

Show profile locations and other site features (dimensions, reference or benchmark, and North).



N 25°14'32"E 76.15'

R=25.00'
A=38.23'

SITE PLAN APPROVAL
DISTRICT RAZOR USE SFD
#BEDROOMS 3
2-2-04 D. Johnson
Date Zoning Administrator

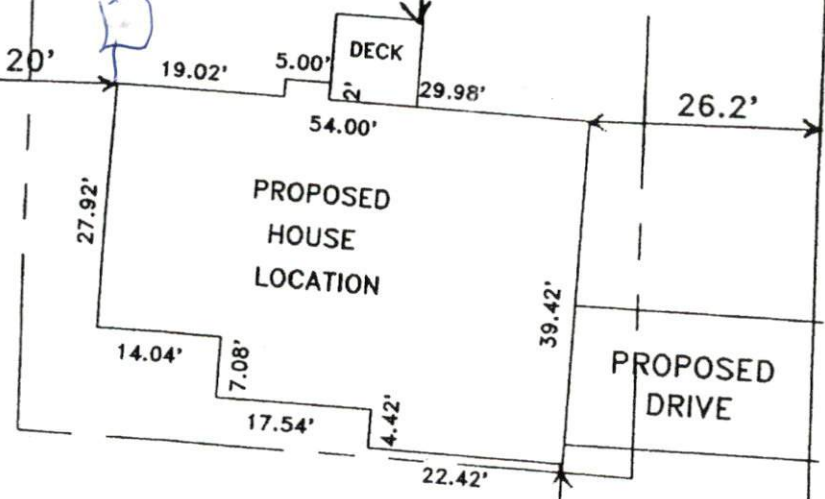
1/2700
16.24
Keep
Below
Fill

①
0.44 AC.

N 67°08'37"W 192.84'

S 67°08'38"E 143.15'

"WOODSHIRE DR." 60' R/W



A=40.45'
R=25.00'

S 25°30'52"W 73.04'

Dun Ba